

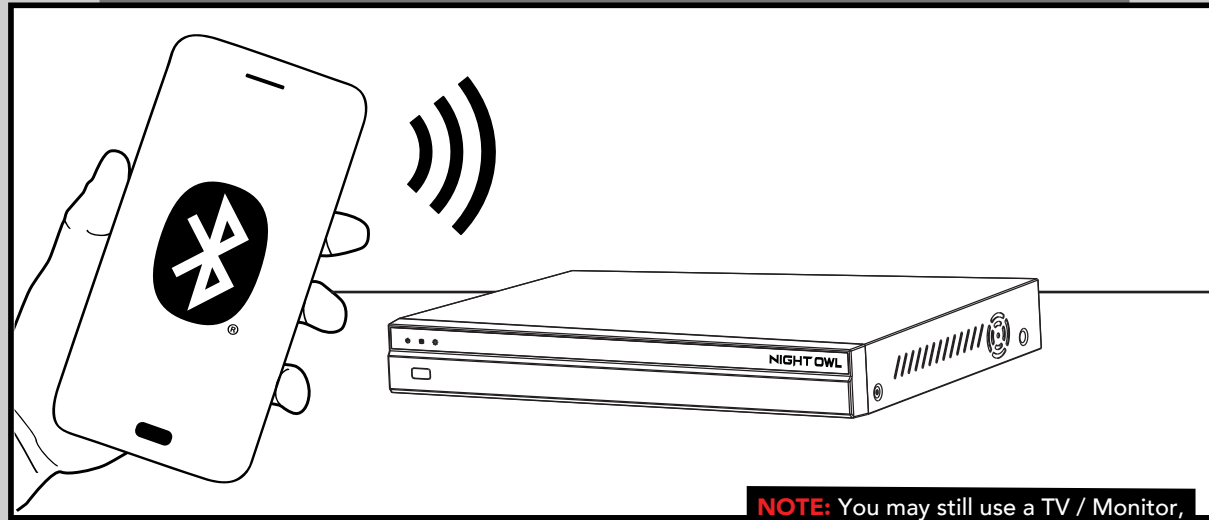


## Step 1: Connecting Your System

### Option 1: Easy Bluetooth® Wireless Setup

With our easy Bluetooth® wireless setup, no TV / Monitor is required. Once your system is connected using the steps below, you can quickly finish the setup right from the app on your Smart Device. This is the preferred setup method for your system. Please proceed to step 1.

**NOTE:** Internet connection required.

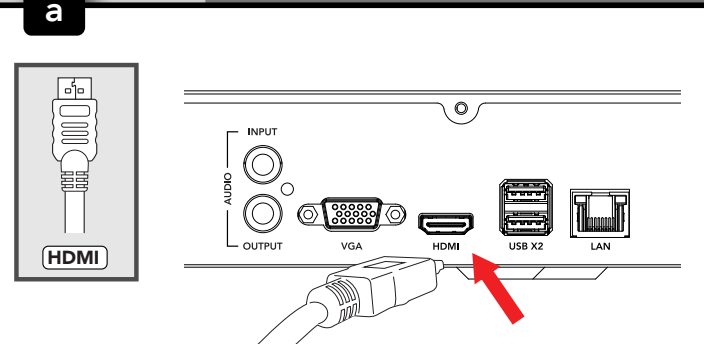


**NOTE:** You may still use a TV / Monitor, it is just not required for initial setup.

### Option 2: Manual Setup (TV / Monitor)

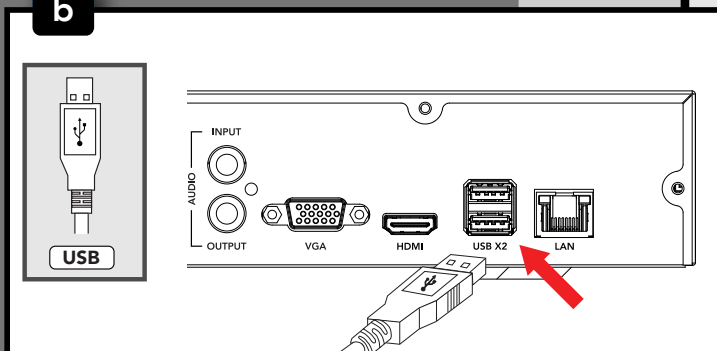
While our easy Bluetooth® wireless setup is preferred, you may still want to locally view your system from a TV / Monitor. The choice is yours based on your setup needs. If you want to connect a TV / Monitor, complete steps a and b below then continue with box 3.

**NOTE:** Internet not required.



Plug one end of the included HDMI cable into the HDMI port on the back of the NVR. Plug the other end of the cable into your TV or Monitor.

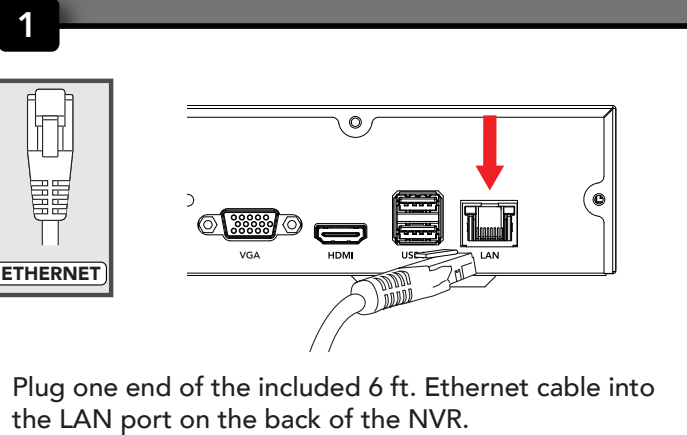
**NOTE:** To view cameras, TV or Monitor must be tuned to the same input the HDMI is plugged into.



Plug the USB mouse into the USB port on the back of the NVR.

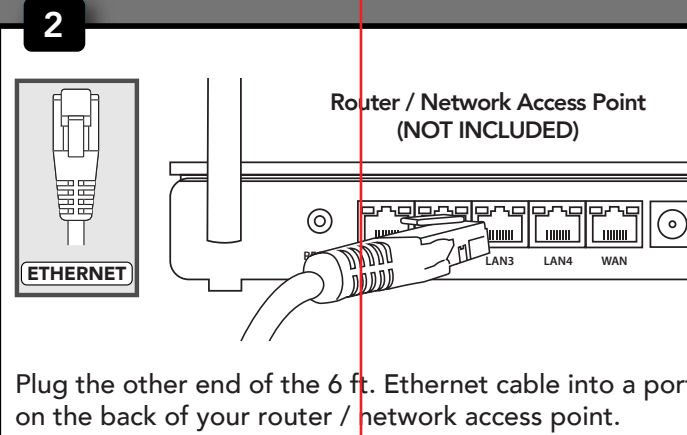
**NOTE:** Start with step 3 below.

## Follow The Steps Below to Continue Setting up your System For Both Options



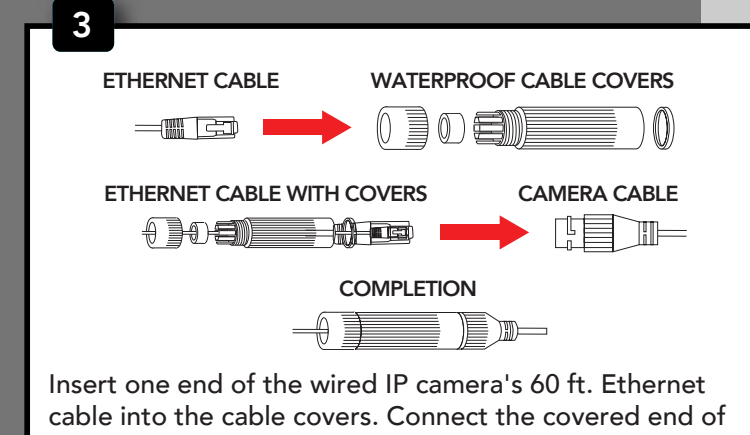
Plug one end of the included 6 ft. Ethernet cable into the LAN port on the back of the NVR.

**NOTE:** Internet connection required.



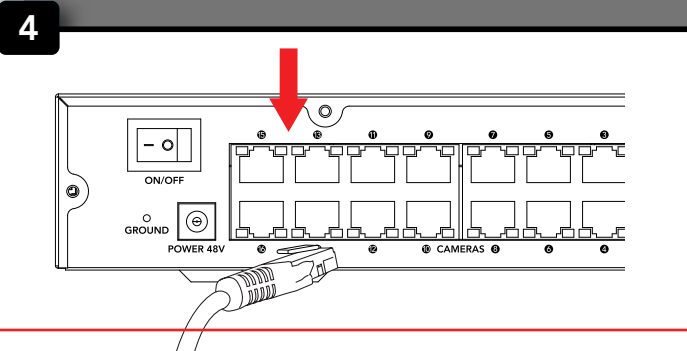
Plug the other end of the 6 ft. Ethernet cable into a port on the back of your router / network access point.

**NOTE:** As long as your NVR is hardwired using Ethernet cabling, you can connect to any working network access point. See your product manual for more details.

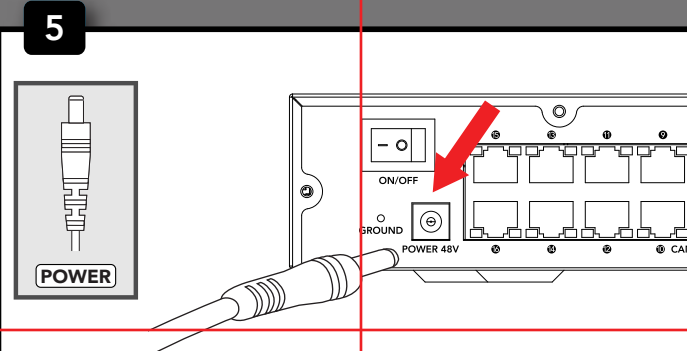


Insert one end of the wired IP camera's 60 ft. Ethernet cable into the cable covers. Connect the covered end of the Ethernet cable to the camera's power cable.

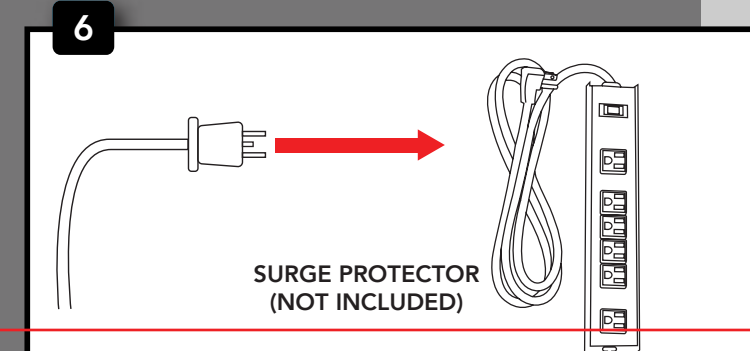
**BEFORE** installing, connect and test each camera locally before final mounting installation.



Input the other end of the wired IP camera's 60 ft. Ethernet cable into an open camera port on the back of the NVR. Repeat this step for all wired IP cameras.



Connect the NVR power adapter to the Power Input on the rear of the NVR.



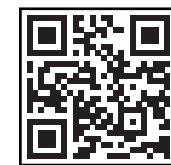
Plug the NVR power adapter into a surge protector or Uninterruptible Power Supply (UPS). Some systems beep upon booting up.

**NOTE:** Make sure the UPS or surge protector is switched ON.

## Step 2: Download the Night Owl App

If you're a First Time User, download the Night Owl app from the App Store or Google Play Store onto your Smart Device then create and verify your account. If you already have an account skip to Step 3.

**NOTE:** Setup is the same for Smartphone and Tablet.



Download on the  
**App Store**



GET IT ON  
**Google Play**

## Step 3: System Configuration

Now that your system's hardware is connected and you have the app setup on your Smart Device, it is time to configure your system. Based on whether you chose Option 1: Easy Bluetooth® Wireless Setup or Option 2: Manual Setup (TV / Monitor), follow the steps below.

### Option 1: Easy Bluetooth® Wireless Setup

**NOTE:** If you have a TV / Monitor connected, you will see setup information appear on the screen as you complete the Bluetooth® setup on your phone or tablet. A TV / Monitor is not required for this setup.

1 Log in to the app. If your device's Bluetooth® is not enabled, you will be asked to allow access.

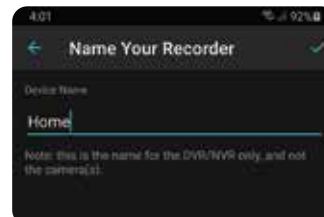


2 The app will now use Bluetooth® to find the NVR. Tap "Continue" to add the NVR to your Night Owl account. You must be near your NVR for the app to discover your device.

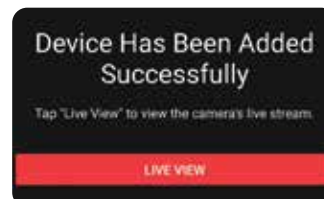


**NOTE:** NVR must be connected to the internet.

3 Take a moment to name your recorder.



4 The app will now pair to the NVR. Once finished, complete the remainder of the Startup Wizard right from the app and begin viewing your cameras.



**NOTE:** If you are not connected to the internet you will not be able to configure your device using Option 1

### Option 2: Manual Setup (TV / Monitor)

**NOTE:** Connecting your system and using the Night Owl App is preferred and offers added security benefits and convenience to your mobile lifestyle.



We strongly recommend connecting your NVR to the Internet to search for the latest firmware. Keeping your firmware updated is vital for the overall health of your system. If you are NOT connecting your NVR to the Internet, please manually upgrade the firmware and register your device.

1 If you have not already done so, connect your NVR to a TV / Monitor using the provided HDMI cable. Follow the steps in Connecting Your System.

2 You will now begin the Startup Wizard. When you get to the following screen, click "Manual Setup (not recommended)."



3 Proceed through the rest of the Startup Wizard to finish setup. Once complete, click on "Go to Live View" to begin viewing your cameras.

