



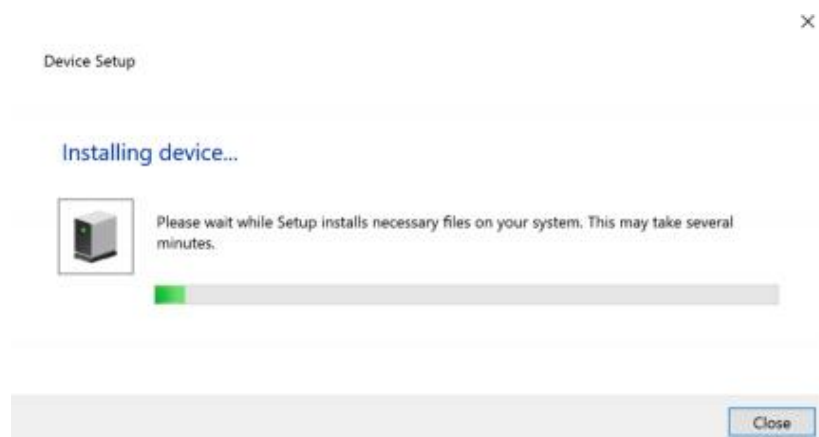
User Manual for Windows 10

First of all, thanks for Choosing our USB fingerprint dongle
There are mainly 3 steps as below before it is ready to work:

Step 1:

Kindly note the Windows Hello Dongle supports Windows 10 32/64 Bits OS only

If your Windows 10 Version is 1703 (Windows 10 Redstone) or even newer, the driver is not needed. When you plug the dongle to the computer, it will download and install the driver from windows update server automatically as below with internet access. This step may take around 1-2 Minutes depending on your internet speed.

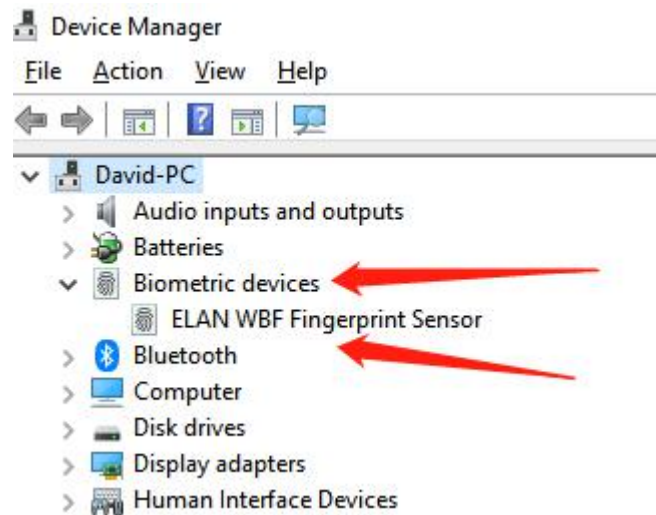


If not, Let's move to step 2

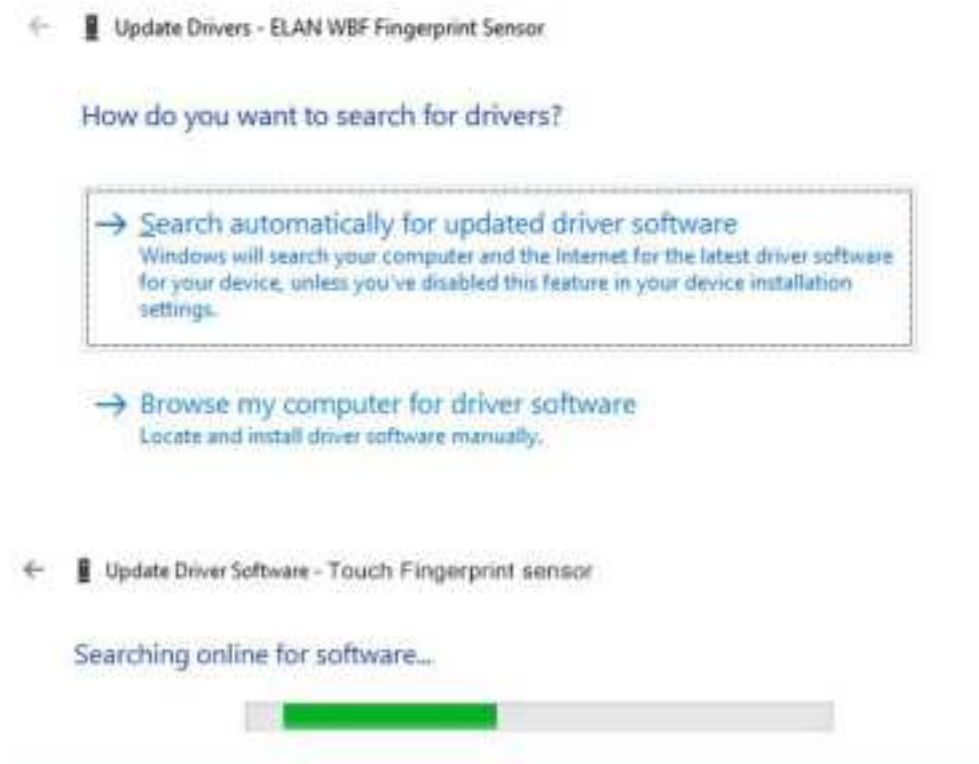
Step 2:

1. Find **Device Manager** in Windows 10 in the control panel / settings

2. Find "Biometric devices"--XXX fingerprint Sensor, right click the mouse as below photo:



3. Choose Update driver, it appears the below, choose “search automatically for updated driver software”, It will automatically download and install the driver till finished Searching and installing the driver for the dongle as below:

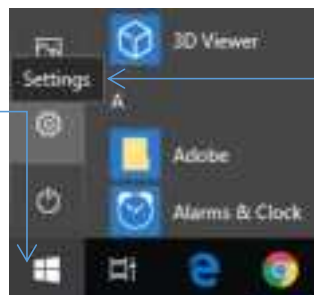




If the automatic installation of drive failed, please contact the after sale service for Driver and move to “Browse my computer for driver software” and install it manually.

Step 3:

- 1: Click  icon in the bottom left of Windows 10, and then choose “**Settings**”



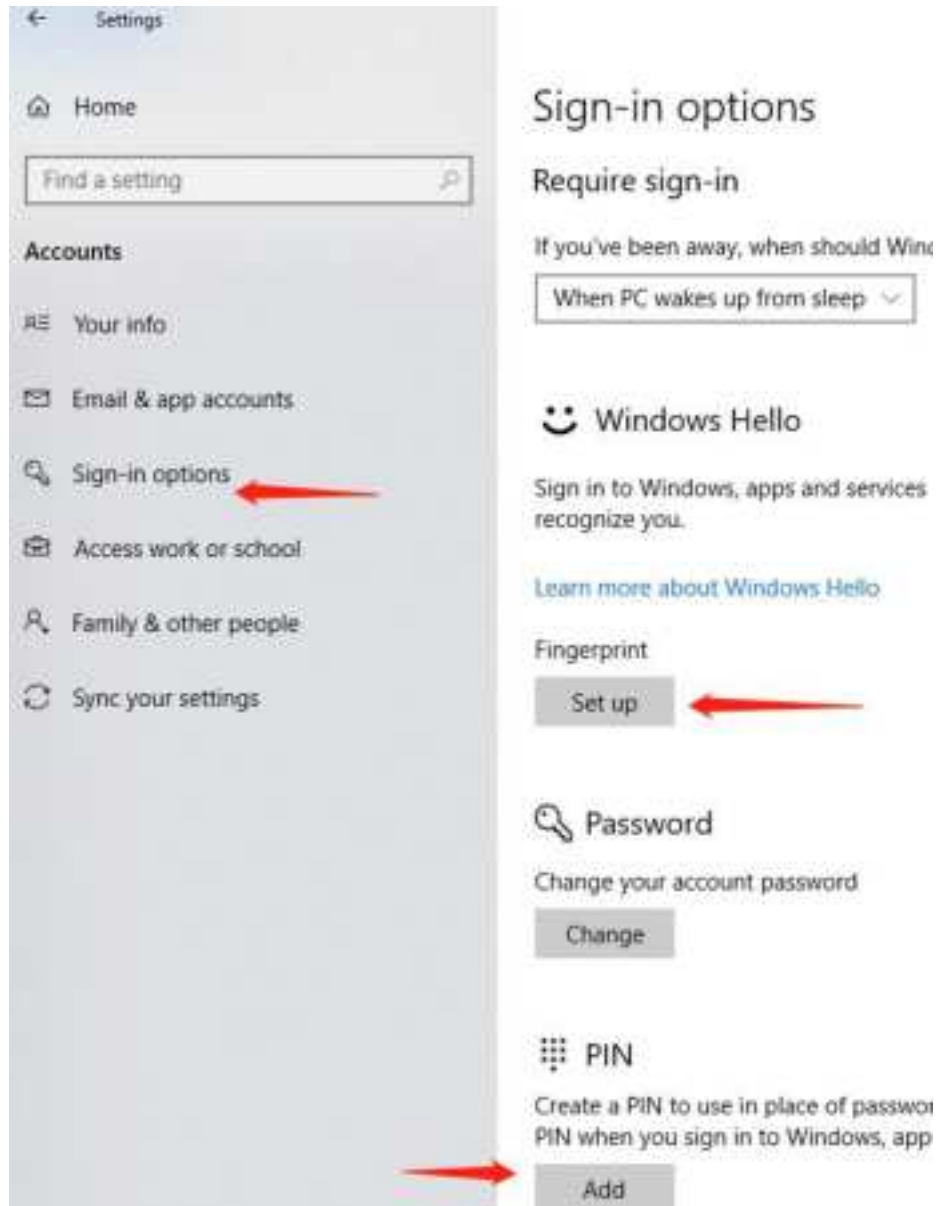
- 2: Choose **Accounts**:



- 3: Choose below **Sign-in** Options, Add a pin code and then add your fingerprints (it supports up to 10pcs), follow the windows instructions to complete the settings :)

Note:

- I. Please try to register your fingerprints from different angles for a better and faster recognition per Microsoft's suggestions
- II. Please make sure your fingers are clean and tidy during the enrollment.



Wish you a happy experience and a sweet memory of using this product :)