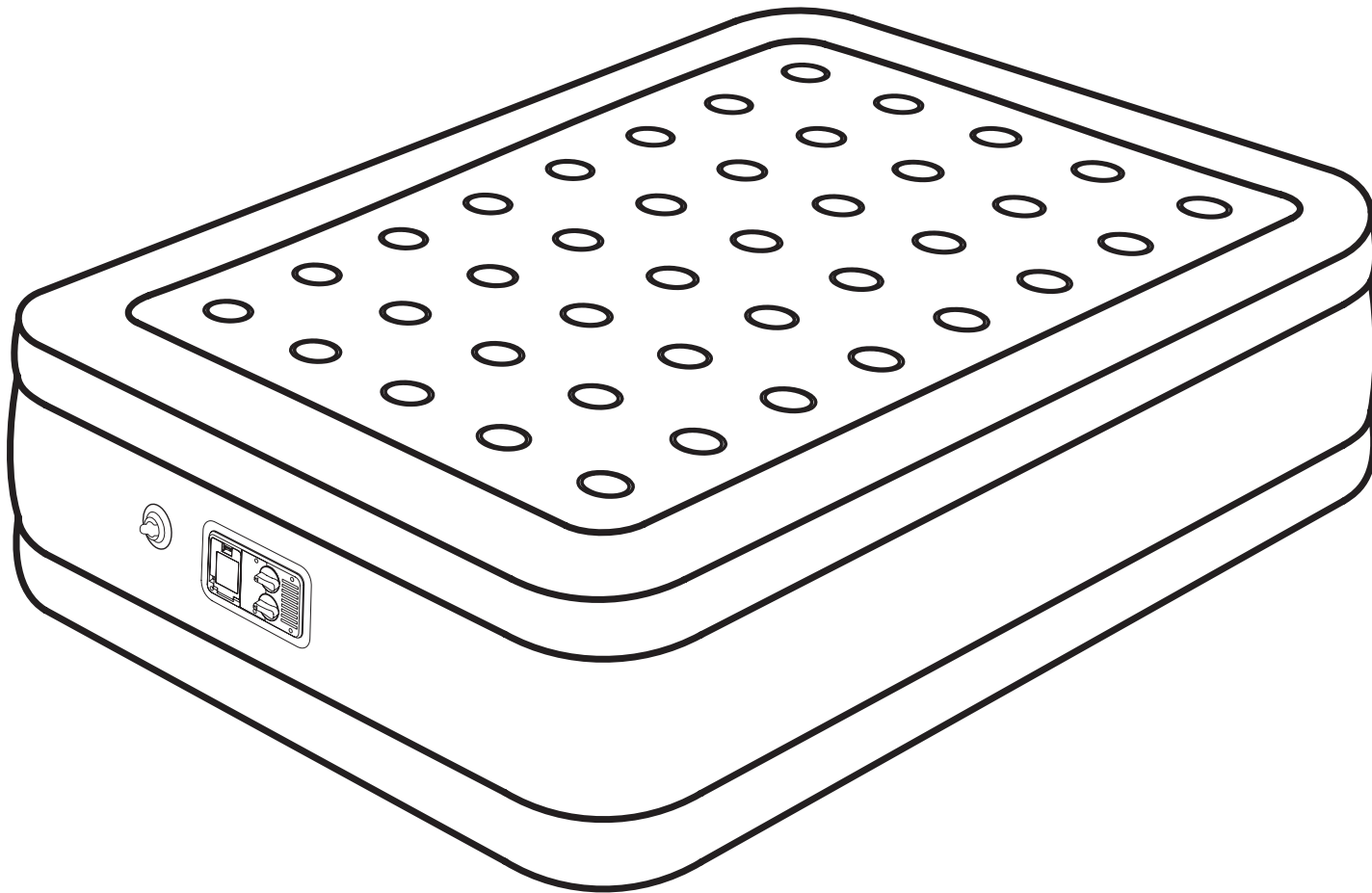


Air Mattress With Built In Pump



-Queen- / -Twin-

Thank you for purchase on Air Mattress. Our goal is to make sure you have a pleasant shopping experience with us. Please feel free to contact us if you have any questions. Our customer service is here to assist you. Please attach your User Name or Order ID so that we can assist you better.

Materials

Soft PVC Flocking

Package Contents

1 x Air Mattress

1 x User Manual

1 x Carry Bag

Safety Information

IMPORTANT: Please read and comply with all of the instructions and warnings provided in this manual before using the product. Failure to comply with the instructions and warnings provided here in may result in inaccurate results and / or damage to the product it self.

WARNING: To reduce the risk of burns, fire, electric shock or injury:

1. Always unplug the air mattress when not in use.
2. Close supervision is necessary when this furnishing is used by, or near children, or people with limited mobility.
3. This air mattress is only to be used for its intended use as described in this manual.
4. **DO NOT** operate this device if it has a damaged cord or plug, if it is not working properly, if it has been dropped or damaged, or if it is wet.
5. Keep the power cord away from heated surfaces.
6. **DO NOT** block the air openings while the device is in operation.
7. Always keep air openings free of lint, hair, and other small objects.
Never drop or insert objects into any of the openings.
8. **DO NOT** use the air mattress outdoors or in damp areas, this product is for household use only.
9. **DO NOT** operate this device where aerosol(spray) products are being used or where oxygen is being administered.
10. **DO NOT** use the air mattress to support video equipment such as televisions or computer monitors.

11. **DO NOT** use near people using or wearing medical devices.
12. Keep away from sharp objects that may damage the product. Do not operate with any sharp tools or gadgets around when the mattress is being used.
13. Infants have suffocated on inflatable mattresses. Never place infant aged birth to 15 months to sleep on this inflatable air mattress. Infants can suffocate on an underinflated or deflated mattress, on bedding, by co-sleeping with another person, and by entrapment between the mattress and bed frame or between the mattress and a vertical surface.
14. Children can be entrapped between the inflatable mattress and an adjacent vertical surface. Provide at least a shoulder width space between the inflatable mattress and adjacent vertical surfaces such as walls, dressers, or other objects.
15. Always keep the inflatable mattress fully inflated when in use.

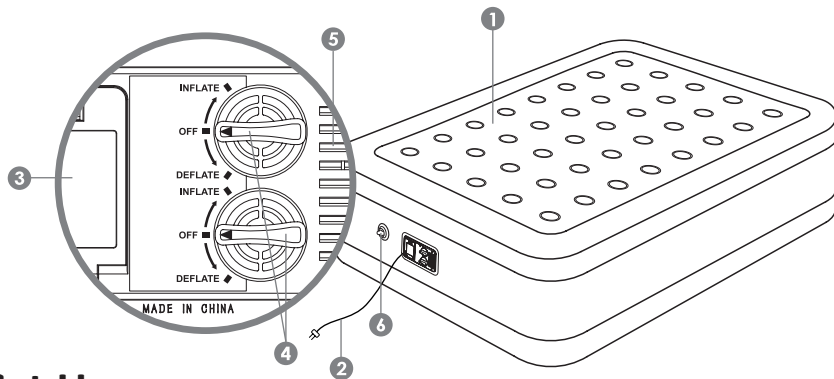
CAUTION: This device is operated with an electrical air pump that is thermally protected. The pump does not contain parts that can be repaired or serviced. Opening the pump casing may expose to the risk of electric shock. If you have any issues with the electrical pump upon arrival, please contact our helpful customer service team immediately.

1. **DO NOT** open the air pump casing for any reason.
2. **DO NOT** use on surfaces where heat may cause a problem.
3. A fire may occur if this device touches or is covered by flammable materials including curtains, draperies, cardboard, plastics etc., while in operation.
4. **DO NOT** operate the pump in enclosed spaces that are not well-ventilated. Always ensure there is at least 2ft. of clearance from any wall or object while the pump is in operation.
5. **DO NOT** operate the pump in the presence of explosive and/or flammable fumes.
6. **DO NOT** place any part of the pump or cord in or under water or other liquid.
7. **DO NOT** exceed the weight limit for this device: 250 lbs (Twin Size) and 500 lbs (Queen Size)

SAVE THESE INSTRUCTIONS.

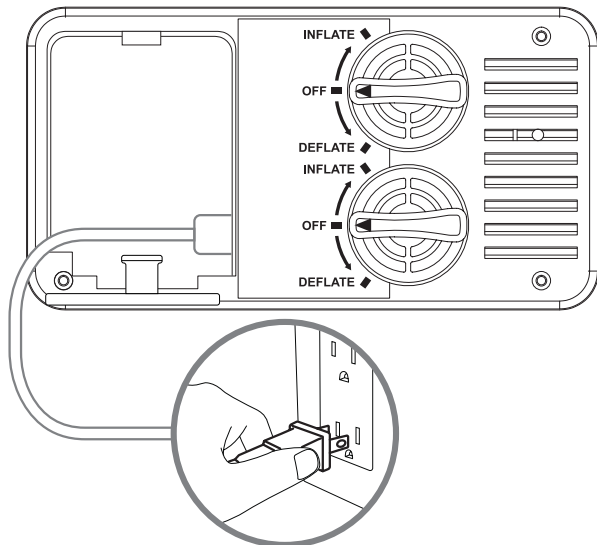
Main Functions

1. Air Mattress (Felt Side Facing Up)
2. Power Cord
3. Power Cord Compartment
4. Control Dial
5. Stomata
6. Manual Inflation/Deflation Valve



Set-Up

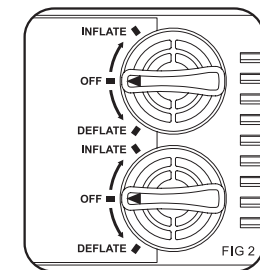
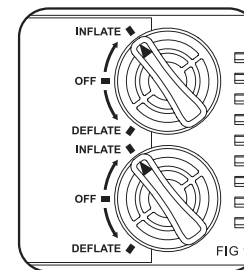
1. Remove the air Mattress from its packaging and unfold it so that the felt side is facing up.
2. Open the power cord compartment and connect the power cord to an electrical outlet.



Operation

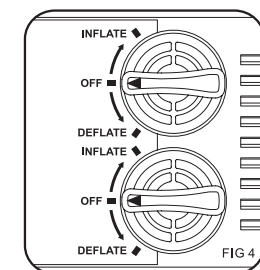
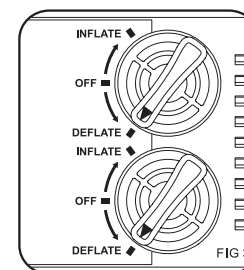
Inflate

1. Plug inset pump into a grounded 120 volt AC electrical outlet.
2. Turn the arrow to INFLATE position (FIG 1), the pump will begin operating .
3. Turn the arrow to "OFF" position (FIG 2) once the air mattress is fully inflated. Ensure the arrow points at the "OFF" position to prevent air loss.
4. Unplug the power cord and store it in the power cord compartment.

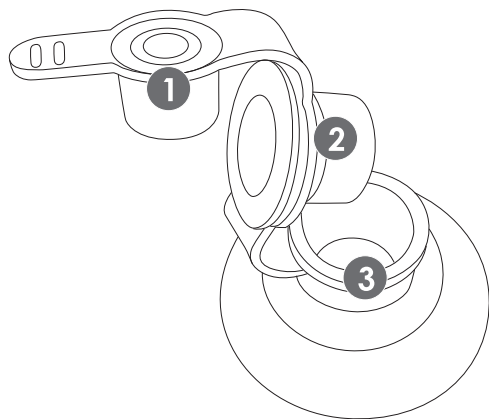


Deflate/Storage

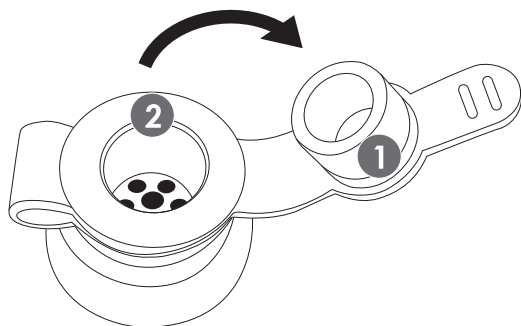
1. Plug inset pump into a grounded 120 volt AC electrical outlet.
2. Turn the arrow to DEFLATE position (FIG 3), the pump will begin deflating.
3. Turn the arrow to "OFF" position (FIG 4) once the air mattress is fully deflated. Ensure the arrow points at the "OFF" position to prevent air loss.
4. Unplug the power cord and place it back into the storage compartment.
5. Make sure the mattress is clean and dry.
6. Lay mattress felt-side up and fold the mattress into thirds, then roll up the mattress to release any remaining air.
7. Store the mattress in a cool, dry place.



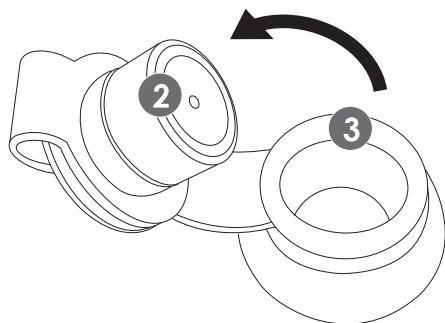
Manual Inflation/Deflation



- Open the first part 1 of the manual inflation/deflation valve and connect an air pump or hose to the valve 2. Inflate to the desired firmness and disconnect the air pump.



- To deflate the mattress, fully open the manual inflation/Deflation valve 2 to release all of the air from the mattress.



Specifications

Size	Twin	Queen
	75 x 39 x 16 in	80 x 60 x 18 in
	191 x 99 x 41 cm	203 x 152 x 46 cm

Attention: PVC Material

The PVC Material will naturally stretch and expand during use. After being inflated and/or having been slept on for several days, the air mattress may lose some of its initial firmness due to the PVC stretching. This is normal and is not the result of air leak. Add air to the mattress to regain your desire firmness level using the built-in air pump.

Tips for Best Use

After removing the air mattress from its packaging, allow it air out in an open room with proper air circulation. Any smell emitted is not toxic and is the normal smell of PVC material. Please note that it may take up to a week for the mattress to completely air out.

When inflating the air mattress for the first time, it is better to let the mattress to rest for 8-12 hours so that the seams can buffer.

It is normal for the air mattress to loses a small amount of air after you fully inflate it.

If you are using the air mattress for more than one night, supplement the mattress each day with 10-15 seconds of air to maintain its firmness.

Always make sure the control dial is in the “OFF” position after inflating.

After 5 minutes of continuous use, the air pump will start to generate heat, allow the air pump to cool down for 30 minutes before resuming use.

Please note that this is not recommended to run the air pump for longer than 5 minutes.