

**2014**  
**Avalon Hybrid**  
**Quick Reference Guide**

# 2014 Avalon Hybrid

This *Quick Reference Guide* is a summary of basic vehicle operations. It contains brief descriptions of fundamental operations so you can locate and use the vehicle's main equipment quickly and easily.

The *Quick Reference Guide* is not intended as a substitute for the *Owner's Manual* located in your vehicle's glove box. We strongly encourage you to review the *Owner's Manual* and supplementary manuals so you will have a better understanding of your vehicle's capabilities and limitations.

Your dealership and the entire staff of Toyota Motor Sales, U.S.A., Inc. wish you many years of satisfied driving in your new Avalon Hybrid.

## A word about safe vehicle operations

This *Quick Reference Guide* is not a full description of Avalon Hybrid operations. Every Avalon Hybrid owner should review the *Owner's Manual* that accompanies this vehicle.

Pay special attention to the boxed information highlighted in color throughout the *Owner's Manual*. Each box contains safe operating instructions to help you avoid injury or equipment malfunction.

All information in this *Quick Reference Guide* is current at the time of printing. Toyota reserves the right to make changes at any time without notice.

# INDEX

## OVERVIEW

Engine maintenance	8
Fuel tank door release and cap	6
Hood release	8
Indicator symbols	4-5
Instrument cluster	4
Instrument panel	2-3
<b>Keyless entry<sup>1,2</sup></b>	<b>6</b>
Light control-Instrument panel	8
<b>Smart Key system<sup>1,2</sup></b>	<b>7</b>

## FEATURES/OPERATIONS

Air Conditioning/Heating	18-19
Audio	20
<b>Auto lock/unlock<sup>2</sup></b>	<b>10</b>
BSM (Blind Spot Monitor)	21
Clock	20
Cruise control	16
Cup holders	22
Driving mode select	11
Dynamic radar cruise control	17
Garage door opener (HomeLink®) <sup>3</sup>	16
Hill-start Assist Control (HAC)	22
Hybrid Synergy Drive System	9
iPod®/USB/AUX port	21
<b>Lights<sup>1</sup> &amp; turn signals</b>	<b>15</b>
Moonroof	12
Multi-Information Display	13
Parking brake	10
Power outlets-12V DC	14
Seat adjustments-Front	13
Seat ventilators/Heaters	19
Seats-Head restraints	12
Steering lock release	11
Steering wheel switches	20
Tilt and telescopic steering wheel	11
Transmission	10
Windows-Power	12
Windshield wipers & washers	14
Wireless charger	22

## SAFETY AND EMERGENCY FEATURES

Door locks	23
Doors-Child safety locks	23
Floor mat installation	27
Seat belts	23
Seat belts-Shoulder belt anchor	24
Spare tire & tools	25
Star Safety System™	26-27
Tire Pressure Monitoring (warning) System	24
Trunk-Internal release	25

<sup>1</sup> Visit your Toyota dealer for information on customizing this feature.

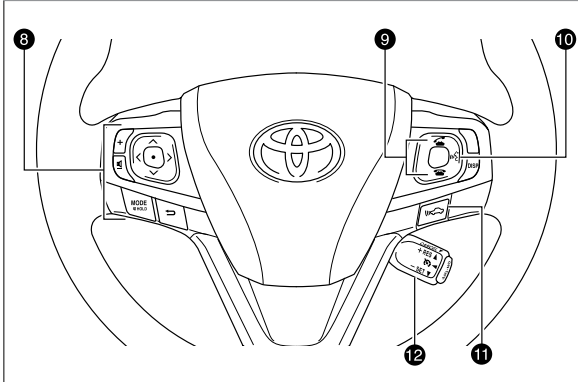
<sup>2</sup> Programmable by customer. Refer to the Owner's Manual for instructions and more information.

<sup>3</sup> HomeLink® is a registered trademark of Johnson Controls, Inc.

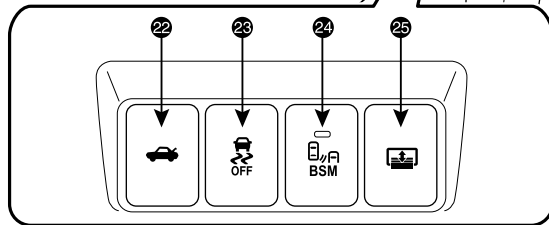
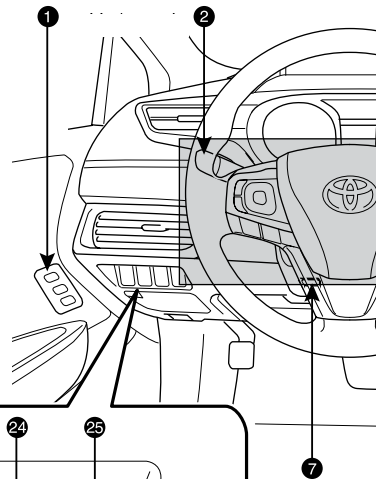
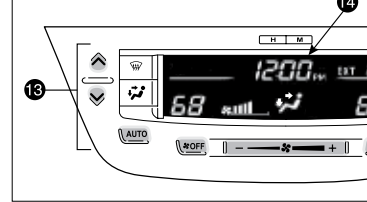
# OVERVIEW

## Instrument panel

### Steering wheel controls

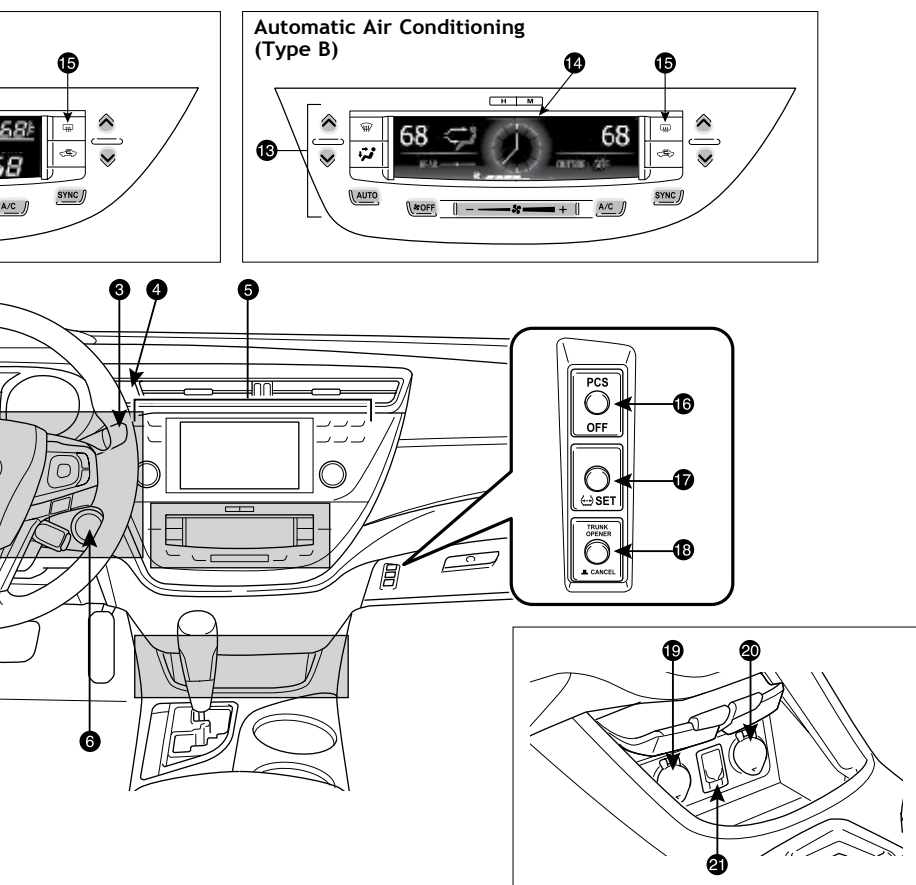


### Automatic Air Conditioning (Type A)



- ① Driving position memory switches<sup>1</sup>
- ② Headlight and turn signal controls/Headlight, turn signal and front fog light<sup>1</sup> controls
- ③ Wiper and washer controls
- ④ Emergency flasher button
- ⑤ Navigation system<sup>1,2</sup>/Display audio system<sup>1,3</sup>
- ⑥ “POWER” switch
- ⑦ Tilt and telescopic steering lock release
- ⑧ Steering wheel audio controls<sup>2,3</sup>
- ⑨ Telephone controls<sup>2,3</sup>
- ⑩ Voice command button<sup>2,3</sup>
- ⑪ Vehicle-to-vehicle distance button<sup>1</sup>
- ⑫ Cruise control<sup>1</sup>/Dynamic radar cruise control<sup>1</sup>
- ⑬ Air Conditioning controls
- ⑭ Clock
- ⑮ Outside rearview mirror/Rear window defogger button
- ⑯ “PCS OFF” switch<sup>1</sup>





- 17 Tire Pressure Monitoring (warning) System reset
- 18 Trunk opener main switch
- 19 12V DC power outlet
- 20 12V DC power outlet<sup>1</sup>/Wireless charger switch<sup>1</sup>
- 21 USB/AUX port
- 22 Trunk opener
- 23 TRAC/VSC OFF switch
- 24 BSM (Blind Spot Monitor) main switch<sup>1</sup>
- 25 Rear sunshade switch<sup>1</sup>

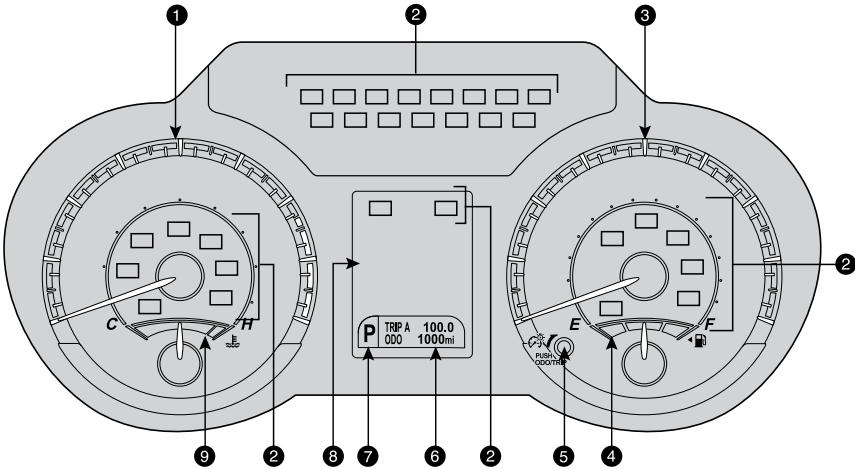
<sup>1</sup> If equipped

<sup>2</sup> For details, refer to the “Navigation System Owner’s Manual.”

<sup>3</sup> For details, refer to the “Display Audio System Owner’s Manual.”

**NOTE:** For vehicles equipped with Entune™, please consult the “Navigation System With Entune Quick Reference Guide” or [www.toyota.com/entune](http://www.toyota.com/entune).

Instrument cluster



- 1 Hybrid System indicator
- 2 Service indicators and reminders
- 3 Speedometer
- 4 Fuel gauge
- 5 Trip meter reset knob/Instrument panel light control knob
- 6 Odometer/trip meter display
- 7 Shift position/shift range display
- 8 Multi-Information Display
- 9 Engine coolant temperature gauge

Indicator symbols

For details, refer to “Indicators and warning lights,” Section 2, 2014 Owner’s Manual.

**BRAKE** Brake system warning<sup>1</sup>

Brake system warning light<sup>1</sup>

Driver/Front passenger seat belt reminder (alarm will sound if speed is over 12 mph)

Electric power steering system warning<sup>1</sup>

Charging system warning<sup>1</sup>

SRS AIR BAG ON/OFF indicator

<sup>1</sup> If indicator does not turn off within a few seconds of starting engine, there may be a malfunction. Have vehicle inspected by your Toyota dealer.

<sup>2</sup> If this light flashes, refer to “Cruise control,” Section 4-5, 2014 Owner’s Manual.

	Master warning light <sup>1</sup>
	Low engine oil pressure warning <sup>1</sup>
	Malfunction/Check Engine indicator <sup>1</sup>
	Low fuel level warning
	Open door warning
	Airbag SRS warning <sup>1</sup>
	Low Tire Pressure Warning <sup>1</sup>
	Theft deterrent/Engine immobilizer system indicator
	Headlight low/high beam indicator
	Automatic high beam indicator <sup>4</sup>
	Turn signal indicator
	Front fog light indicator
	Slip indicator <sup>1</sup>
	Vehicle Stability Control OFF indicator <sup>1</sup>
	Traction Control OFF indicator <sup>1</sup>
	Cruise control indicator <sup>2</sup> /Cruise control SET indicator <sup>2</sup>
	Radar cruise control indicator <sup>3,4</sup>
	Pre-Collision System indicator <sup>1,5</sup>
	Anti-lock Brake System warning <sup>1</sup>
	ECO drive mode indicator
	SPORT mode indicator
	"READY" indicator
	EV indicator
	EV drive mode indicator

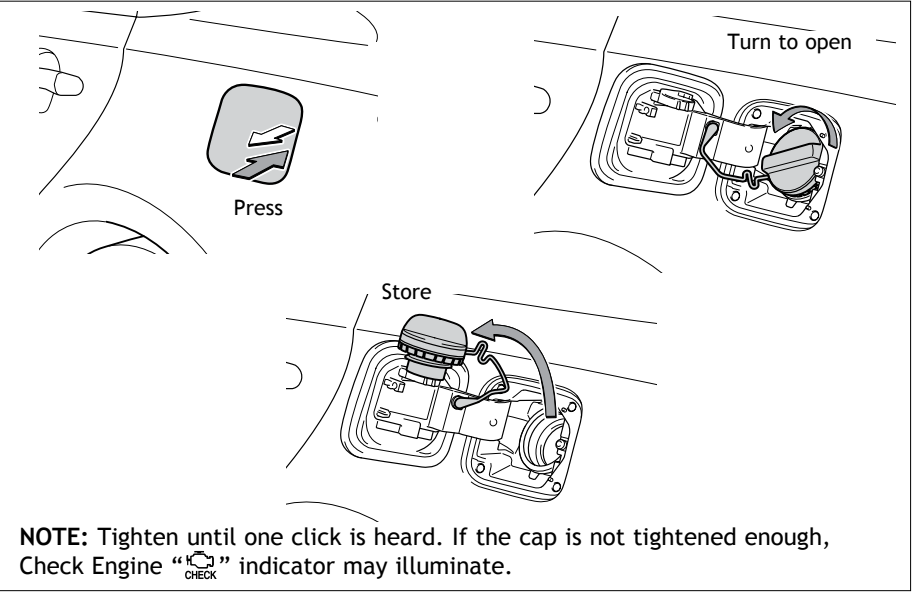
<sup>3</sup> If this light flashes, refer to "Dynamic radar cruise control," Section 4-5, 2014 Owner's Manual.

<sup>4</sup> The indicator flashes to indicate a malfunction.

<sup>5</sup> The indicator flashes faster than usual to indicate that the system is operating.

Fuel tank door release and cap

The fuel tank door locks/unlocks with the vehicle's doors.



Keyless entry

Locking operation

Push

Unlocking operation

Push ONCE: Driver door  
TWICE: All doors

**NOTE:** If a door is not opened within 60 seconds of unlocking, all doors will relock for safety.

Trunk lid

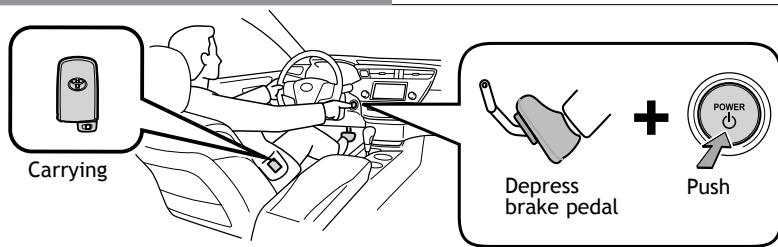
Push and hold

Panic button

Push and hold

## Smart Key system

### Start function



**NOTE:** Gear shift lever must be in Park and brake pedal depressed.

### Power (without starting Hybrid System)

Without depressing the brake pedal, pressing the “POWER” switch will change the operation mode in succession from:

#### ACCESSORY

Accessories such as the radio will operate.

#### ON

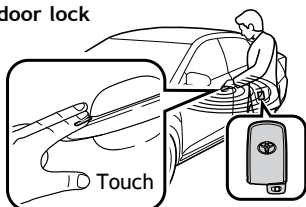
Power ON; the Hybrid System not running.

#### OFF

All systems OFF.

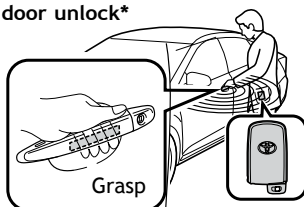
### Locking operation

#### Front door lock

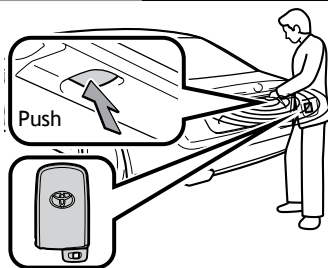


### Unlocking operation

#### Front door unlock\*



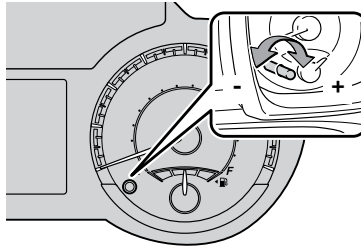
### Trunk unlock



\* Driver door unlocking function can be programmed to unlock driver door only, or all doors. In some models, grasping front passenger door handle will unlock all doors.

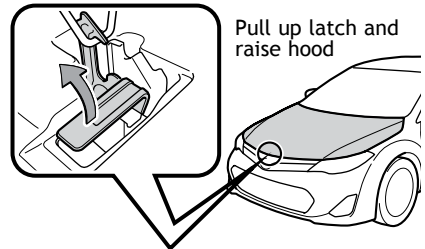
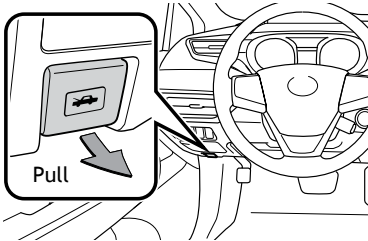
**NOTE:** Doors may also be locked/unlocked using remote.

## Light control-Instrument panel



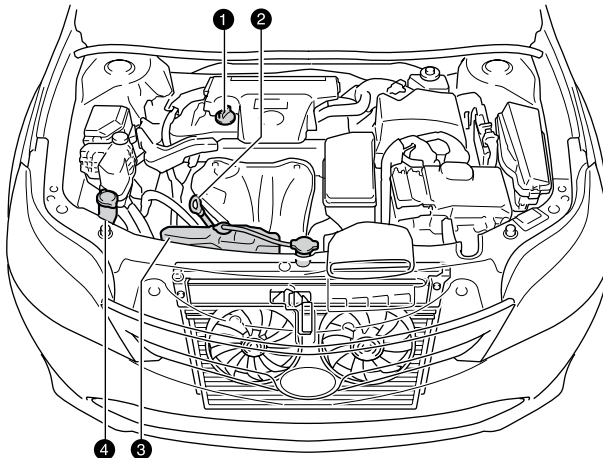
Brightness control

## Hood release



Pull up latch and raise hood

## Engine maintenance



- ① Engine oil filler cap
- ② Engine oil level dipstick
- ③ Engine coolant reservoir
- ④ Windshield washer fluid tank

**NOTE:** Regularly scheduled maintenance, including oil changes, will help extend the life of your vehicle and maintain performance. Please refer to the "Warranty & Maintenance Guide."

# FEATURES/OPERATIONS

## Hybrid Synergy Drive System

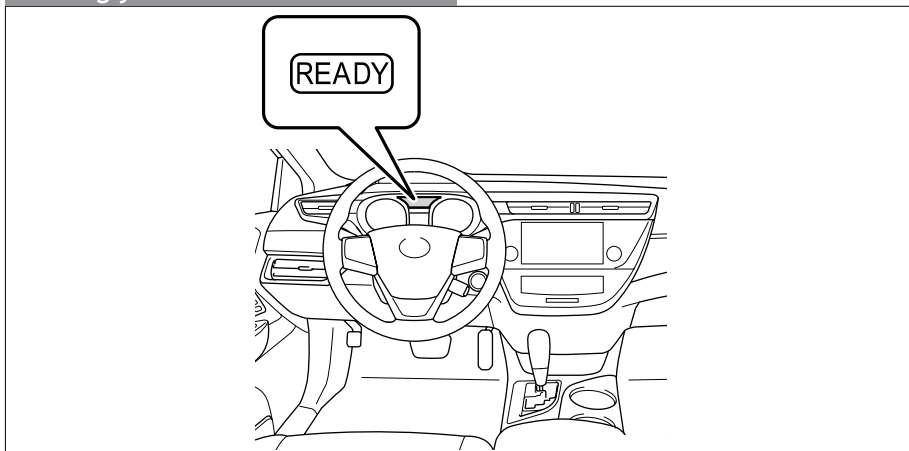
The Hybrid Synergy Drive System utilizes a computer-controlled gasoline engine and electric motor to provide the most efficient combination of power for the vehicle. To conserve energy, when the brakes are applied the braking force generates electricity which is then sent to the traction battery. In addition, the engine shuts off when the vehicle is stopped. The benefits are better fuel economy, reduced vehicle emissions and improved performance.

**NOTE: Fuel consumption and energy information of the Hybrid System are shown on the multi-information display and/or display audio system/navigation system screen (if equipped).**

### Tips for improved fuel economy

1. Ensure tire pressures are maintained at levels specified in the *Owner's Manual*.
2. Link trips to reduce engine cold starts whenever possible.
3. Avoid driving at speeds that are higher than necessary, especially on the highway.
4. When possible, avoid sudden stops to maximize regenerative braking energy.
5. Minimize use of the Air Conditioning.

### Starting your vehicle



- (1) Put the selector lever in "P."
- (2) Depress the brake pedal, and press the "POWER" switch briefly and firmly
- (3) The "READY" light will blink. After a few seconds, when the light remains steady and a beep sounds, you may begin driving.

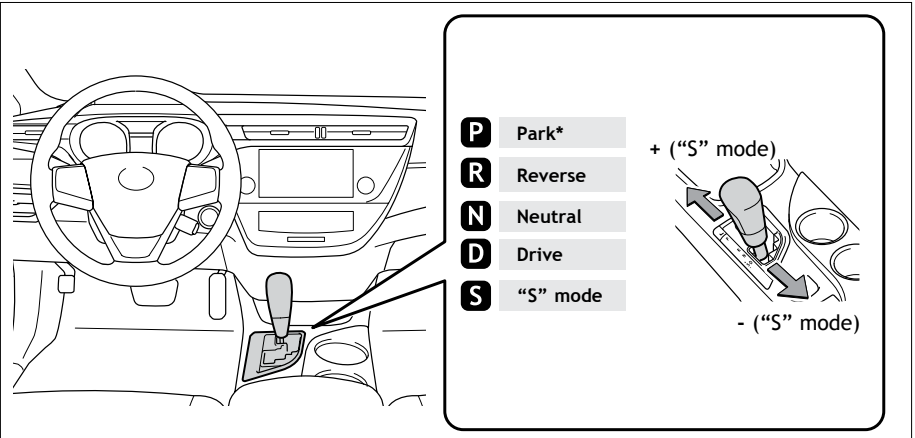
## Auto lock/unlock

Automatic door locks can be programmed to operate in four different modes, or turned OFF.

- Doors lock when shifting from Park.
- Doors lock when the vehicle speed goes above approximately 12 mph.
- Doors unlock when shifting into Park.
- Doors unlock when the “POWER” switch is set to OFF and driver’s door is opened.

Refer to the *Owner’s Manual* for more details.

## Transmission



\* The “POWER” switch must be in ON mode and the brake pedal depressed to shift from Park.

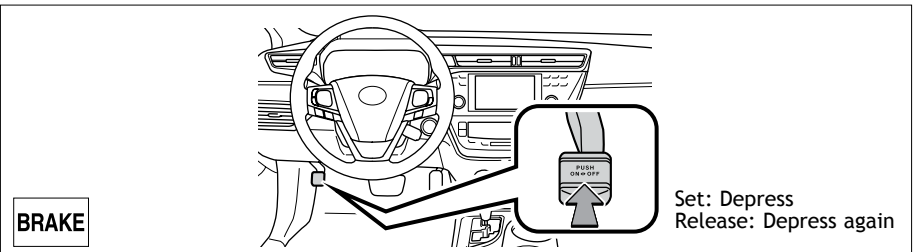
### “S” (Sequential) mode

Shift the shift lever to “S” position from “D” position.

- + : Upshifting
- : Downshifting

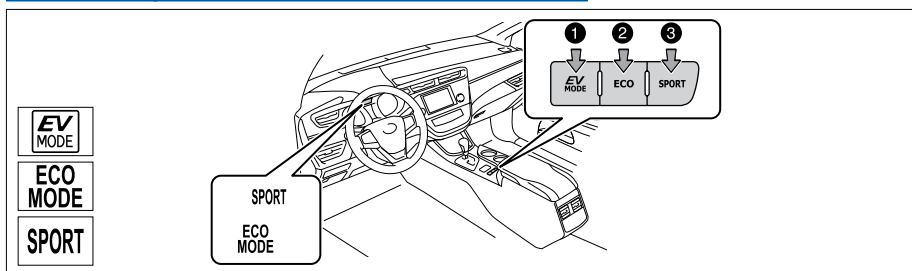
Downshifting increases power going uphill, or provides engine braking downhill. For best fuel economy during normal driving conditions, always drive with the shift lever in the “D” position.

## Parking brake





## Driving mode select



### 1 EV drive mode

EV drive mode allows the electric motor (traction motor), powered by the hybrid battery (traction battery), to be used to drive the vehicle under certain driving conditions.

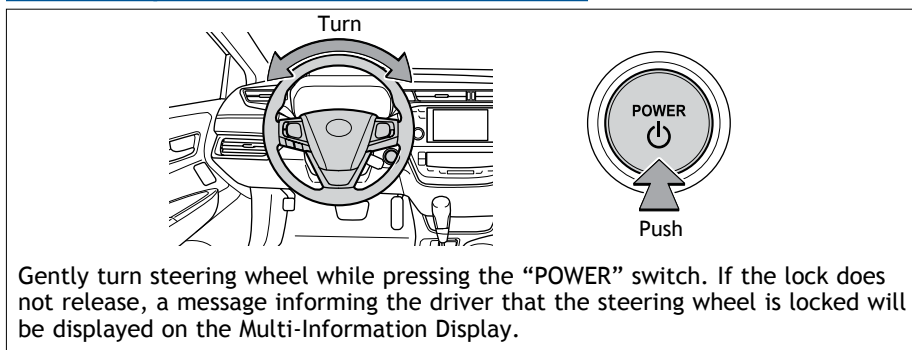
### 2 ECO drive mode

Use ECO drive mode to help achieve low fuel consumption during trips that involve frequent accelerating.

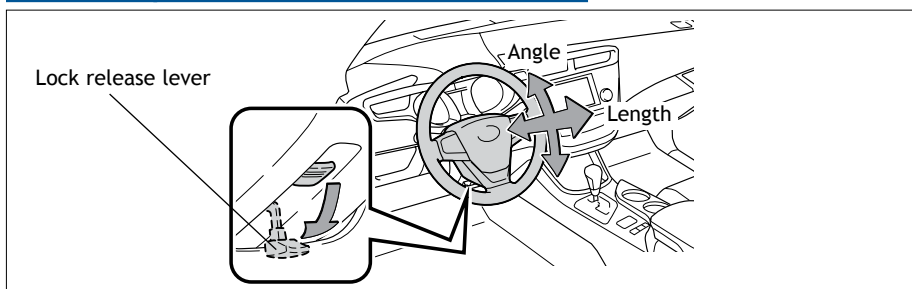
### 3 SPORT mode

Use SPORT mode when increased acceleration response and precise handling is desired; for example, when driving on mountain roads.

## Steering lock release



## Tilt and telescopic steering wheel

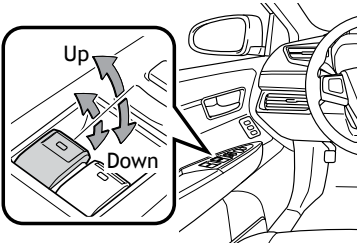


Hold wheel, push lever down, set angle and length, and return lever.

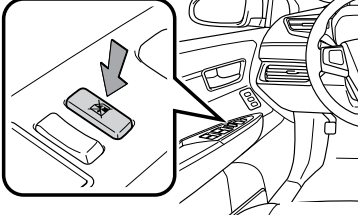
**NOTE:** Do not attempt to adjust while the vehicle is in motion.

Windows-Power

Driver side



Window lock switch

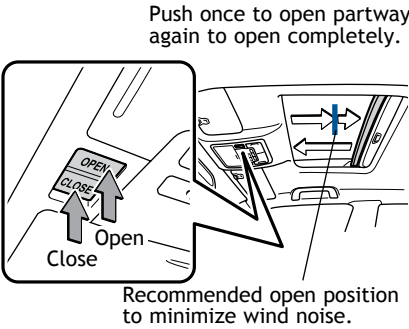


**Automatic operation** Push the switch completely down or pull it completely up and release to fully open or close. To stop the window partway, operate the switch in the opposite direction.

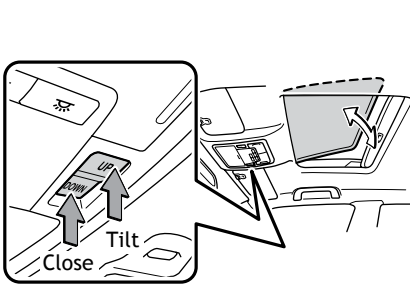
**Window lock switch** Deactivates all passenger windows. Driver remains able to operate all windows.

Moonroof (if equipped)

Sliding operation

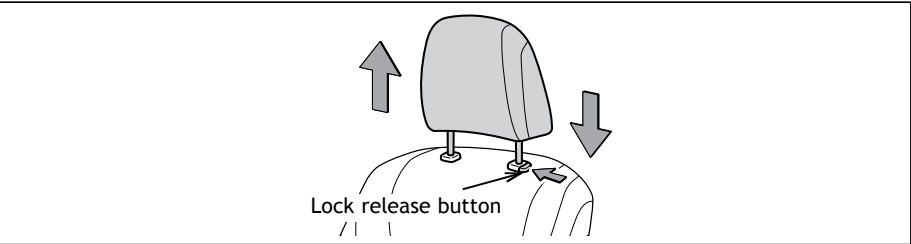


Tilting operation



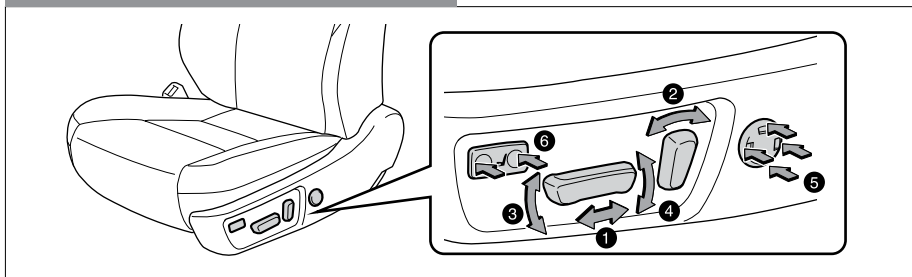
Push once to open; moonroof will automatically stop at the recommended position. Push again to open completely.

Seats-Head restraints

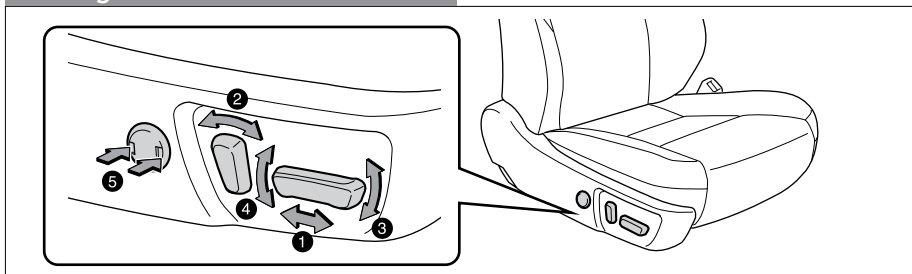


## Seat adjustments-Front

### Driver's seat

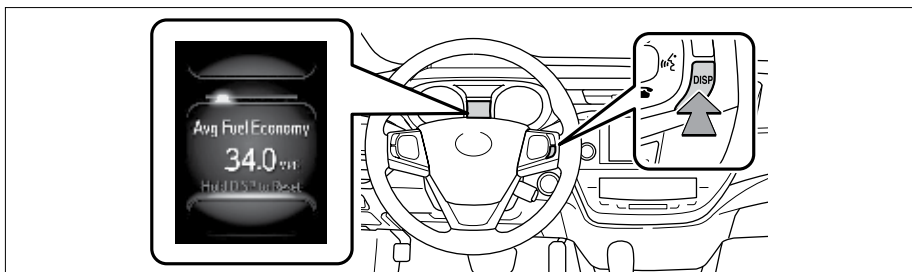


### Passenger's seat



- ① Seat position (forward/backward)
- ② Seatback angle
- ③ Seat cushion angle (if equipped)
- ④ Seat height (if equipped)
- ⑤ Lumbar support (if equipped)
- ⑥ Seat cushion length (if equipped)

## Multi-Information Display

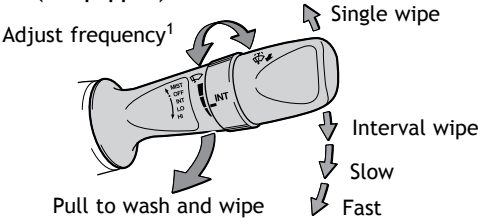


Push "DISP" to scroll through the following information screens:

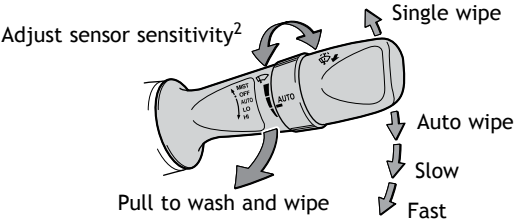
- (1) Distance to empty
- (2) Average fuel economy
- (3) Current fuel economy
- (4) Energy flow
- (5) Digital speedometer
- (6) Settings

Windshield wipers & washers

With intermittent wiper (if equipped)



With AUTO rain-sensing wiper (if equipped)

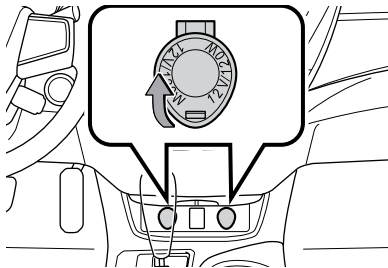


<sup>1</sup> Intermittent windshield wiper frequency adjustment  
Rotate to increase/decrease wipe frequency.

<sup>2</sup> Rain-sensing windshield wiper Rotate to increase/decrease sensor sensitivity.

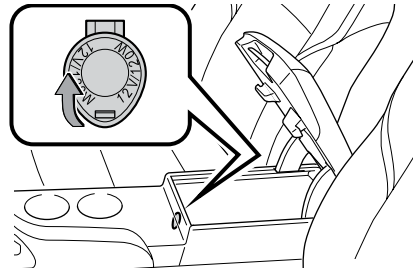
Power outlets-12V DC

Front console



Right side: if equipped

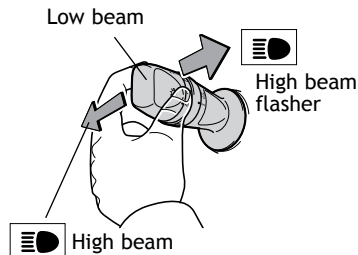
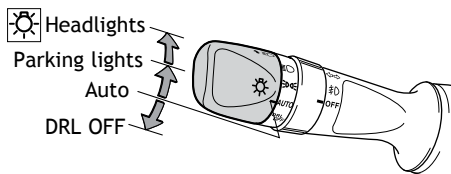
Center console



The “POWER” switch must be in the ACCESSORY or ON mode for use.

## Lights & turn signals

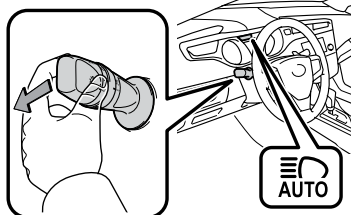
### Headlights



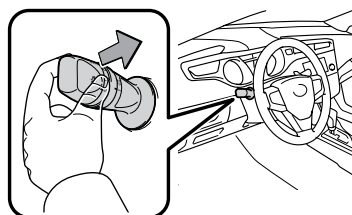
- Daytime Running Light system (DRL)** Automatically turns on the headlights to make vehicle more visible to other drivers. Not for use at night.
- Automatic light cut off system** When the headlights are on: Automatically turns lights off after 30-second delay, or lock switch on remote may be pushed after locking. When the tail lights are on: Automatically turns lights off when driver's door is opened.

### Automatic high beam (if equipped)

#### Activate\*

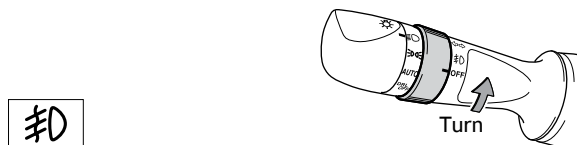


#### Deactivate



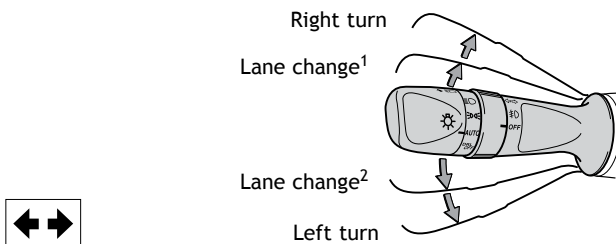
\* Refer to the *Owner's Manual* for details on activating the automatic high beams.

### Front fog lights (if equipped)



Front fog lights come on only when the headlights are on low beam.

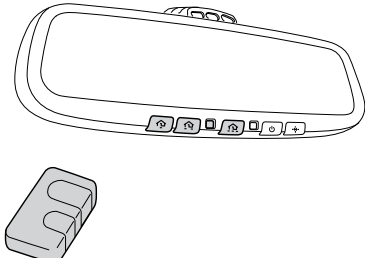
### Turn signals



<sup>1</sup> The right hand signals will flash three times.

<sup>2</sup> The left hand signals will flash three times.

**Garage door opener (HomeLink®)\*  
(if equipped)**



Garage door openers manufactured under license from HomeLink®\* can be programmed to operate garage doors, estate gates, security lighting, etc.

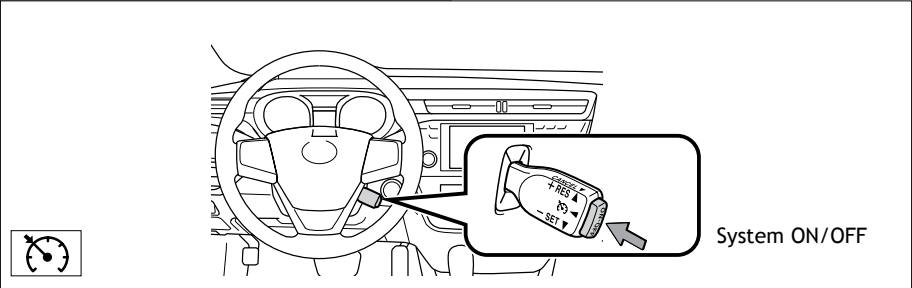
Refer to “Garage door opener,” Section 5-5 in the *Owner’s Manual* for more details.

For programming assistance, contact HomeLink® at 1-800-355-3515, or visit <http://www.homelink.com>.

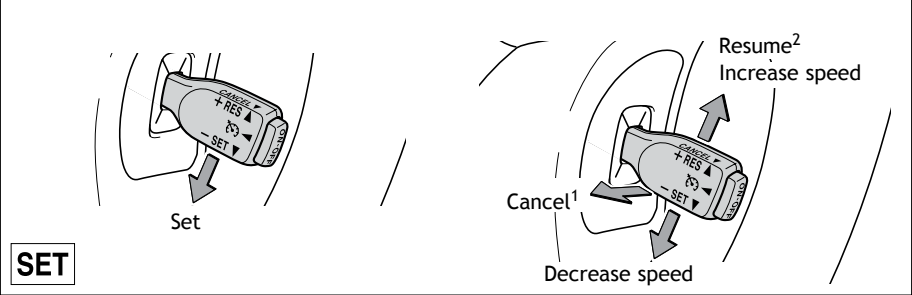
\* HomeLink® is a registered trademark of Johnson Controls, Inc.

**Cruise control**

**Turning system ON/OFF**



**Functions**



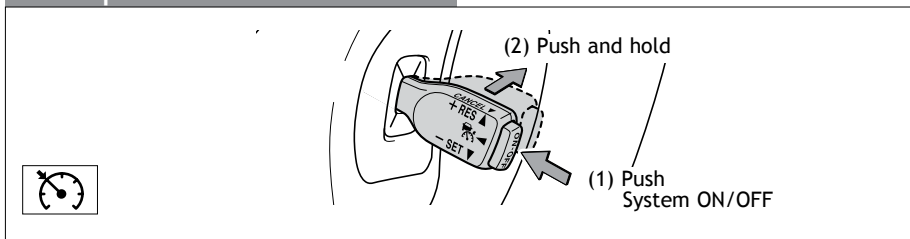
¹ The set speed may also be cancelled by depressing the brake pedal.

² The set speed may be resumed once vehicle speed exceeds 25 mph.

## Dynamic radar cruise control (if equipped)

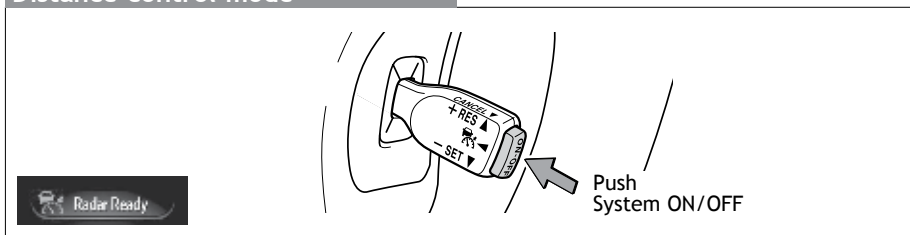
Refer to the *Owner's Manual* for more details and complete safety precautions before attempting to use "Dynamic radar cruise control."

### Fixed speed mode



To set, cancel and resume a speed Refer to "Functions" in the *Cruise Control* section, and to the *Owner's Manual* for more details.

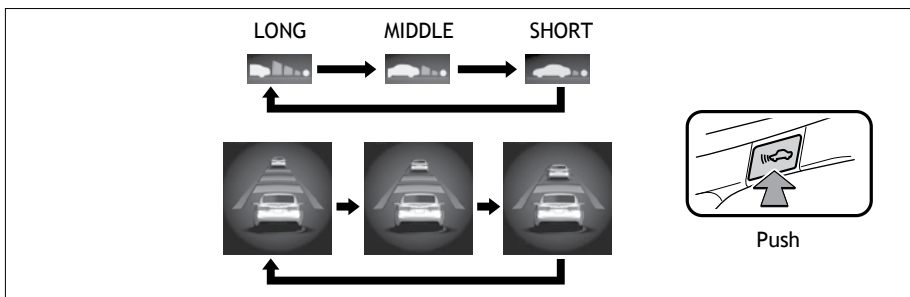
### Distance control mode



The distance control mode will cruise at a set speed, decelerate to maintain a selected distance from a slower vehicle traveling in front of you, and accelerate back up to the selected speed if the vehicle in front changes lanes or speeds up.

To set, cancel and resume a speed Refer to "Functions" in the *Cruise Control* section, and your *Owner's Manual* for more details.

**NOTE:** Once vehicle speed is set, pushing lever up toward "+ RES" will increase speed by 1 mph, or in 5 mph increments if held. Pushing lever down toward "- SET" will reduce speed in the same way.



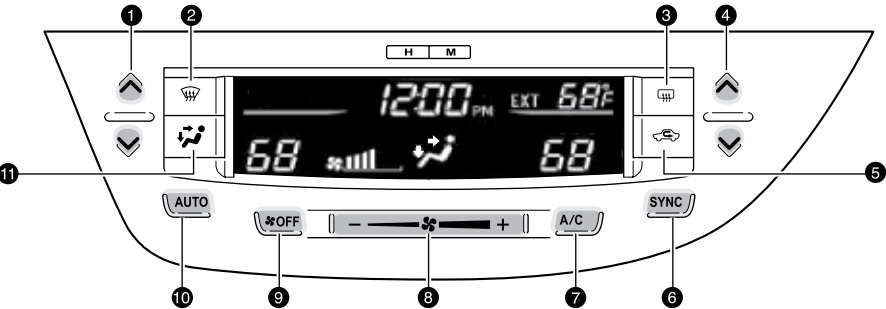
**To change the vehicle-to-vehicle distance**

Push the distance button to cycle through the settings, which will change progressively from LONG to MIDDLE to SHORT.

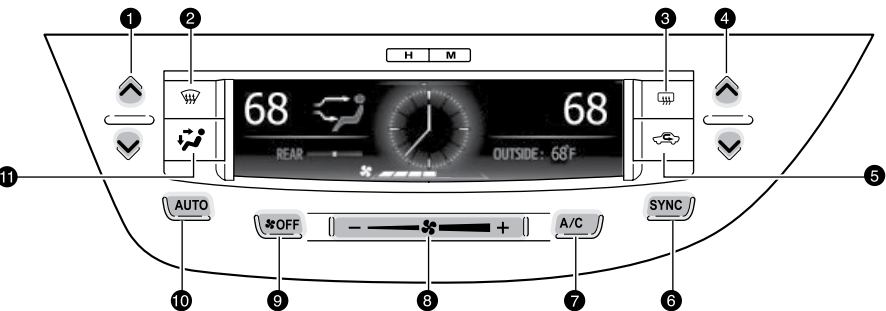
Air Conditioning/Heating

Front control panel

Type A



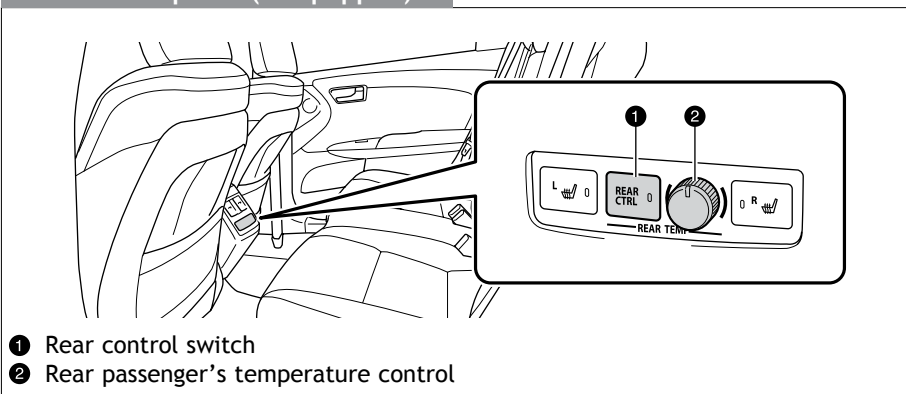
Type B



- ① Temperature selector (driver side)
- ② Windshield airflow/defogger
- ③ Outside rearview mirror/Rear defogger
- ④ Temperature selector (passenger side)
- ⑤ Recirculate cabin air (fresh air when OFF)
- ⑥ “SYNC” button
  - Indicator ON:** Synchronized temperature settings for driver, passengers and rear seat (if equipped).
  - Indicator OFF:** Separate temperature settings for driver and passengers.
- ⑦ Air Conditioning ON/OFF
- ⑧ Fan speed
- ⑨ Climate control OFF
- ⑩ Automatic climate control ON
  - Adjusting the temperature setting will cause the airflow vents, air intake and fan to adjust automatically.
- ⑪ Airflow vent
  - In “/ ” mode, use fresh air (“” indicator ON) to reduce window fogging.



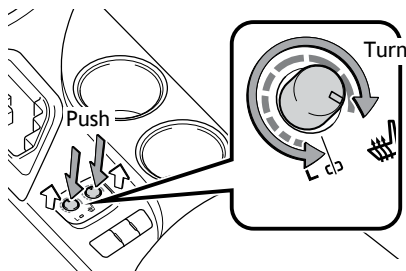
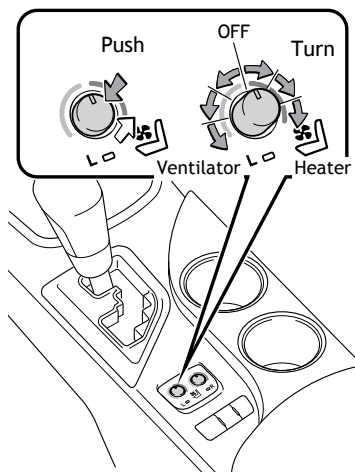
## Rear control panel (if equipped)



## Seat ventilators/Heaters (if equipped)

### With ventilator

### Heater only



Push knob to pop the controller out.  
Turn clockwise for heater, counter-clockwise for ventilator.

Audio\*1

Push to display audio screen

Eject CD

Touch screen display

\*2

\*3

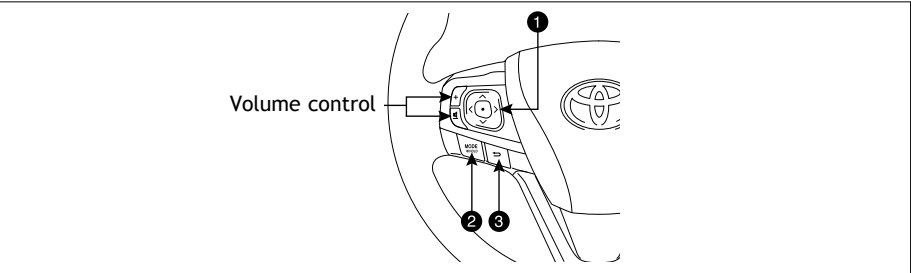
Seek station/CD track select

Push to turn ON/OFF

Turn to tune radio stations manually or select tracks or files

\*1 Refer to the “Display Audio System Owner’s Manual” for instructions and more information.  
\*2 Display Audio system  
\*3 Premium Display Audio system

Steering wheel switches



- ① “V ^ < >”  
Use to search within a selected audio medium (radio, CD, iPod, etc.), or to perform certain telephone operations.
- ② “MODE”  
Push to turn audio ON and select an audio mode. Push and hold to turn the audio system OFF.
- ③ Back button  
Returns to the previous screen.

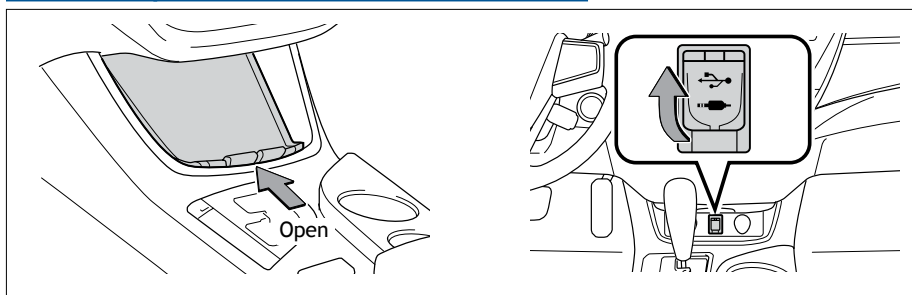
Clock

Type A

H-Hour set  
M-Minute set

Type B

## iPod®/USB/AUX port



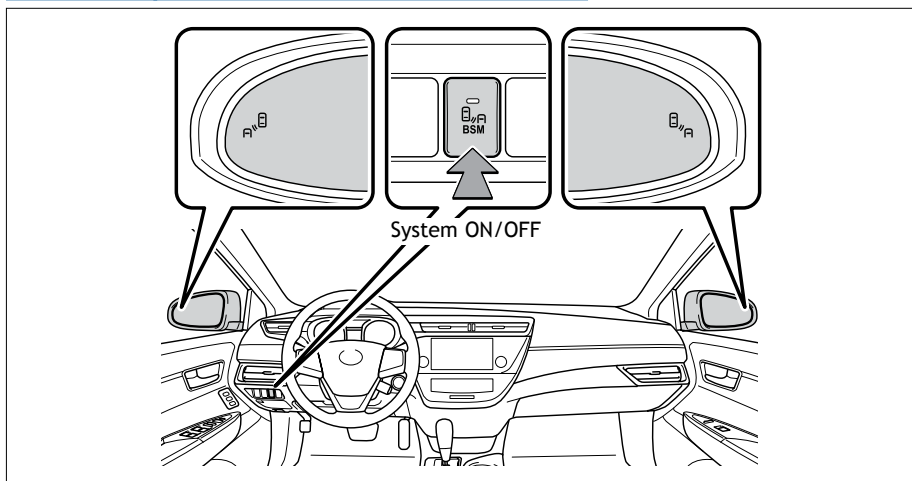
### iPod®/USB port

By connecting a USB-compatible portable audio device or USB memory to the USB port, you can listen to music from the portable audio device or USB memory through the vehicle's speaker system.

### AUX port

By inserting a mini plug into the AUX port, you can listen to music from a portable audio device through the vehicle's speaker system while in AUX mode.

## BSM (Blind Spot Monitor)(if equipped)



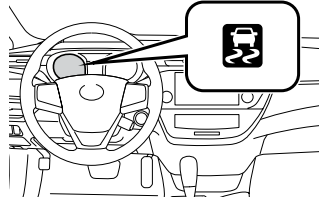
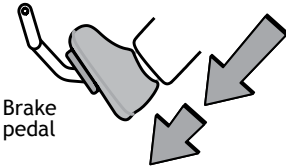
The Blind Spot Monitor is a system that has two functions:

- The Blind Spot Monitor function (assists the driver in decision making when changing lanes)
- The Rear Cross Traffic Alert function (assists the driver when backing up)

The system uses radar sensors to detect vehicles that are traveling in the area that is not reflected in the outside rearview mirror (the blind spot), and advises the driver of the vehicles' existence via the outside rearview mirror indicator.

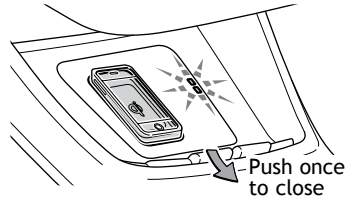
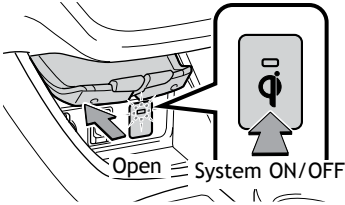
Refer to the *Owner's Manual* for more details on this system before attempting to use it.

Hill-start Assist Control (HAC)



HAC helps prevent rolling backwards on an incline. To engage, push further down on brake pedal while at a complete stop until a beep sounds and slip indicator illuminates. HAC holds for approximately two seconds after releasing brake pedal. Refer to the *Owner's Manual* for more details.

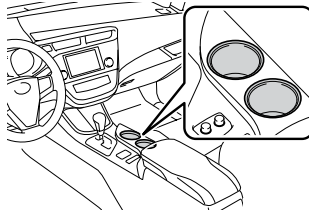
Wireless charger (if equipped)



A mobile device with the “Q” logo can be charged wirelessly. Charging can only be performed with the “POWER” switch in ACCESSORY or ON mode. Place a mobile device on the tray. One LED indicator is illuminated while charging and two LED indicators are illuminated when the charging is complete.

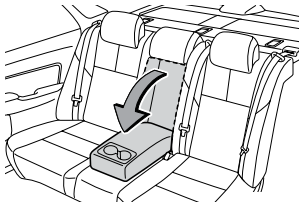
Cup holders

Front

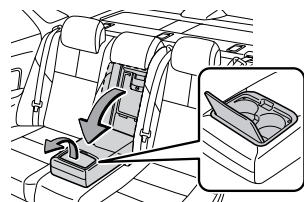


Rear

Type A

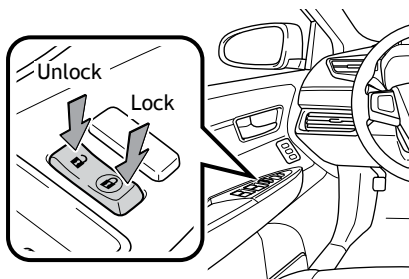


Type B



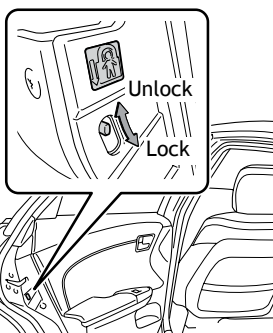
# SAFETY AND EMERGENCY FEATURES

## Door locks



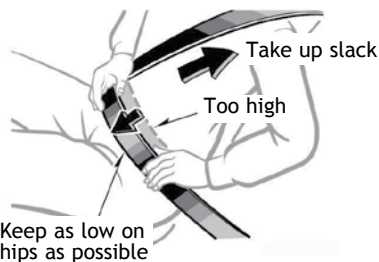
## Doors-Child safety locks

Rear door



Moving the lever to the lock position will allow the door to be opened only from the outside.

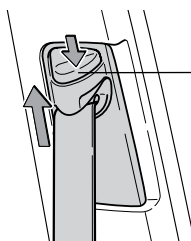
## Seat belts



If belt is fully extended, then retracted even slightly, it cannot be re-extended beyond that point, unless fully retracted again. This feature is used to help hold child restraint systems securely.

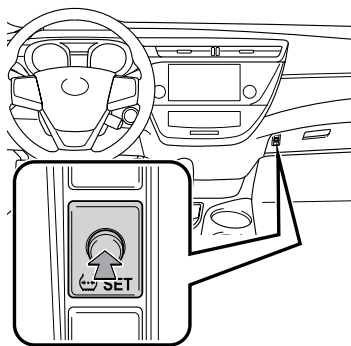
To find more information about seat belts, and how to install a child restraint system, refer to the *Owner's Manual*.

### Seat belts-Shoulder belt anchor




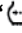
Push up, or squeeze lock release to lower

### Tire Pressure Monitoring (warning) System



#### System reset initialization

1. Push and hold “ SET” button until the indicator blinks three times.
2. Wait a few minutes to allow initialization to complete.

After adjusting tire pressures, or after tires have been rotated or replaced, turn the “POWER” switch to ON mode and press and hold the “ SET” button until indicator blinks three times. Let the vehicle sit for a few minutes to allow initialization to complete.

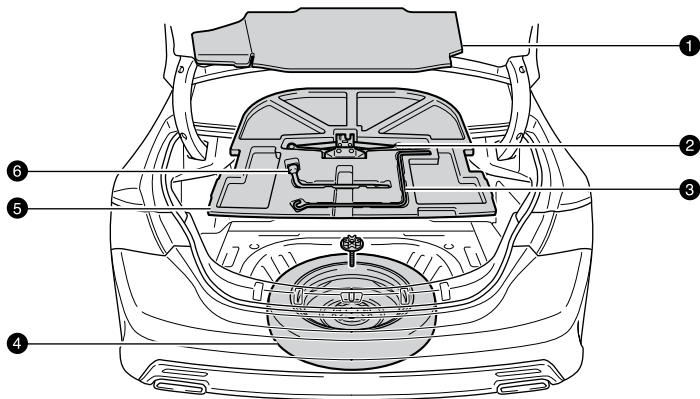
Refer to the load label on the door jamb or the *Owner's Manual* for tire inflation specifications.

If the tire pressure indicator flashes for more than 60 seconds and then remains on, take the vehicle to your local Toyota dealer.

**NOTE:** The warning light may come on due to temperature changes or changes in tire pressure from natural air leakage. If the system has not been initialized recently, setting the tire pressures to factory specifications should turn off the light.

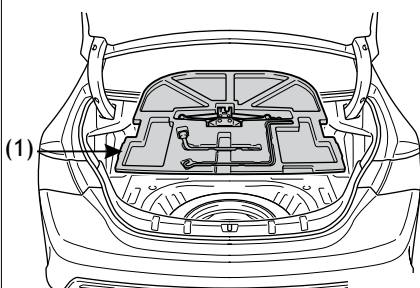
## Spare tire & tools

### Tool location

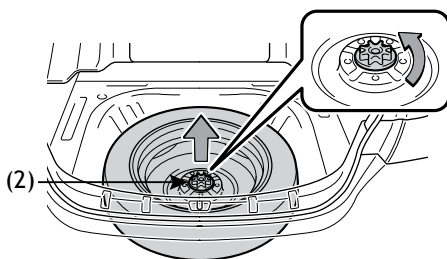


- ❶ Luggage floor cover
- ❷ Jack
- ❸ Jack handle
- ❹ Spare tire
- ❺ Tool tray
- ❻ Wheel nut wrench

### Removing the spare tire



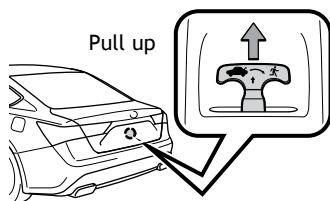
(1) Remove the tool tray.



(2) Loosen the center fastener that secures the spare tire.

Refer to the *Owner's Manual* for tire changing and jack positioning procedures.

### Trunk-Internal release



## SAFETY AND EMERGENCY FEATURES

### Star Safety System™

All new Toyota vehicles come standard with the Star Safety System™, which combines Enhanced Vehicle Stability Control (VSC), Traction Control (TRAC), Anti-lock Braking System (ABS), Electronic Brake-force Distribution (EBD), Brake Assist (BA) and Smart Stop Technology (SST).

#### Enhanced Vehicle Stability Control (VSC)

Enhanced Vehicle Stability Control provides cooperative control of the ABS, TRAC, VSC and EPS.

Enhanced VSC helps to maintain directional stability when loss of traction occurs during a turn.

#### Traction Control (TRAC)

VSC helps prevent loss of traction during cornering by reducing Hybrid System output, and Traction Control helps maintain traction on loose gravel and wet, icy, or uneven surfaces by applying brake force to the spinning wheel(s).

Toyota's TRAC sensors are activated when one of the drive wheels starts to slip. TRAC limits Hybrid System output and applies the brakes to the spinning wheel. This transfers power to the wheels that still have traction to help keep you on track.

#### Anti-Lock Brake System (ABS)

ABS helps prevent brakes from locking up by "pulsing" brake pressure to each wheel. This limits brake lockup and helps provide directional control for the current road conditions.

Toyota's ABS sensors detect which wheels are locking up and limits wheel lockup by "pulsing" each wheel's brakes independently. Pulsing releases brake pressure repeatedly for fractions of a second. This helps the tires attain the traction that current road conditions will allow, helping you to stay in directional control.

#### Electronic Brake Force Distribution (EBD)

Toyota's ABS technology has Electronic Brake-force Distribution (EBD) to help maintain control and balance when braking. Abrupt stops can cause a vehicle to tilt forward, reducing the braking power of the rear wheels. EBD responds to sudden stops by redistributing brake force to enhance the braking effectiveness of all four wheels.

#### Brake Assist (BA)

Brake Assist is designed to detect sudden or "panic" braking, and then add braking pressure to help decrease the vehicle's stopping distance. When there is only a split second to react, Brake Assist can add additional brake pressure more quickly than just the driver alone can.



## Smart Stop Technology (SST)

Smart Stop Technology automatically reduces driving torque when the accelerator and brake pedals are pressed simultaneously under certain conditions.

## Floor mat installation

There are two types of Toyota floor mats: carpeted and all-weather. Each vehicle has model-specific floor mats. Installation is easy.

**To keep your floor mat properly positioned, follow these steps:**

- Only use floor mats designed for your specific model.
- Use only one floor mat at a time, using the retaining hooks to keep the mat in place.
- Install floor mats right side up.

