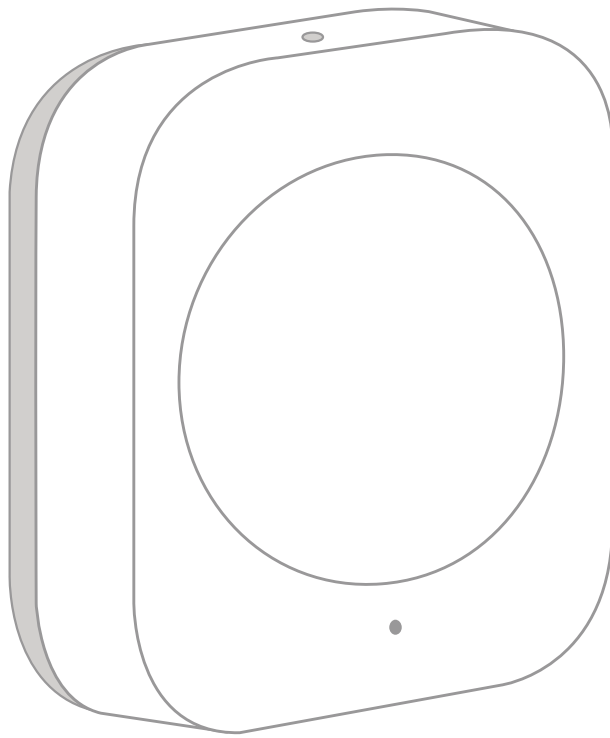


# Aqara



Wireless Mini Switch

# Wireless Mini Switch Quick Start Guide

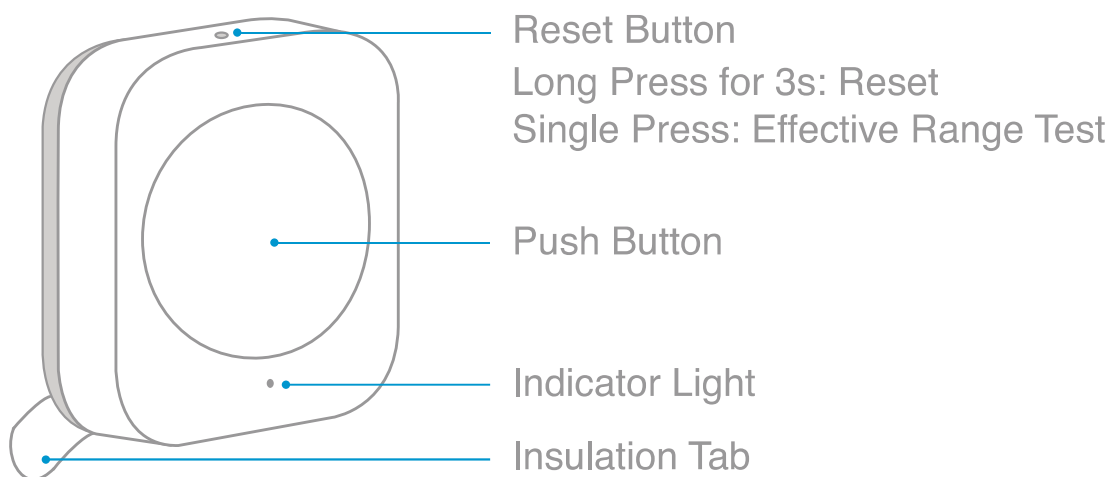
## Product Introduction

Aqara Wireless Mini Switch is a remote control switch with compact design and low energy consumption. You can place or stick it almost anywhere. Single press, double press or long press to control various smart accessories, such as, Smart Light and Smart Plug.

\* A hub is required.

\* Aqara Hub is required to enable Aqara Wireless Mini Switch to work with HomeKit technology. See [www.aqara.com](http://www.aqara.com) for more details.

\* This product is for indoor use only.



## Quick Setup

1. Please add the Hub to the app according to the Hub Quick Start Guide.
2. Please remove the battery insulation tab before use.
3. Please open the app, tap “Home” and then tap “+” in the top right corner to enter “Add Device (Accessory)” page. Select “Wireless Mini Switch”, and add it according to instructions.

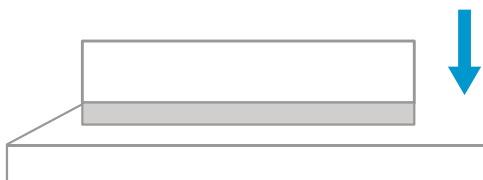
\* If the connection fails, please move the accessory closer to the Hub and try again.

## Installation

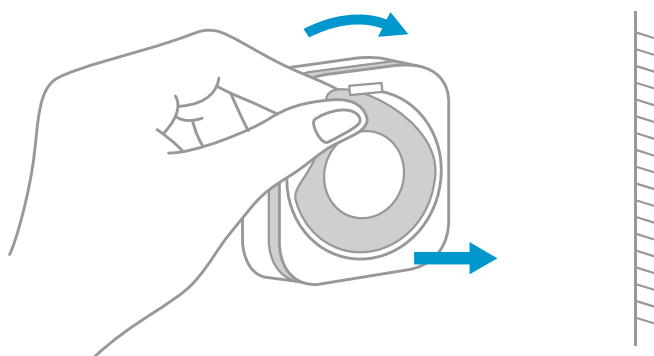
Effective Range Test: Single press the reset button on the accessory at your desired position. If the Hub makes voice prompts, it indicates that the accessory can communicate effectively with the Hub.

\* Avoid metal surface to maximize signal strength.

Option 1: Place it directly in the desired position.



Option 2: Remove the protective film, and stick it to the desired position.



\* Keep the surface clean and dry.

Identify an Accessory: Open the app, go to “Device List (Accessories)” page. Single press the reset button on the accessory. If the Hub makes voice prompts and the related accessory icon in the app blinks, it indicates that the accessory is identified.

\* Only Aqara Home app and Aqara app support this function.

## Specifications

Model: WXKG11LM

Dimensions: 45 × 45 × 12 mm (1.77 × 1.77 × 0.47 in.)

Wireless Protocol: Zigbee

Battery: CR2032

Operating Temperature: -10° – +50° C

Operating Humidity: 0 – 95% RH, no condensation

Online Customer Service: [www.aqara.com/support](http://www.aqara.com/support)

Email: [support@aqara.com](mailto:support@aqara.com)

Manufacturer: Lumi United Technology Co., Ltd.

Address: 8th Floor, JinQi Wisdom Valley, No.1 Tangling Road, Liuxian Ave, Taoyuan Residential District, Nanshan District, Shenzhen, China.