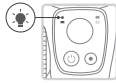
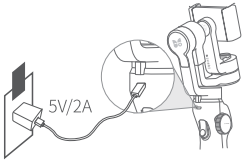


# Capture 2s Quickstart Guide

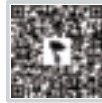
## Charge



- **Charging:**  
The Battery Level Indicator flashes red.
- **Fully Charged:**  
The Battery Level Indicator turns solid green.

## Download Capture2 App

Scan the QR codes on the right side or search for "Capture2" on Google- Play/ App Store, then download and install it.

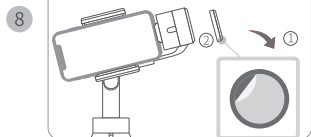
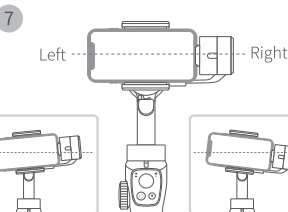
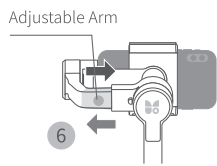
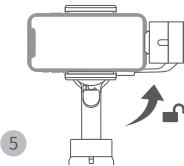
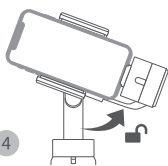
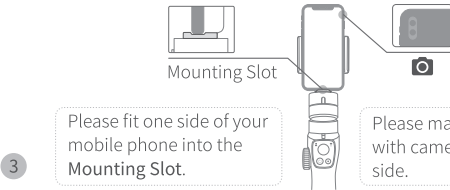
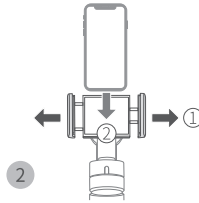


Google Play



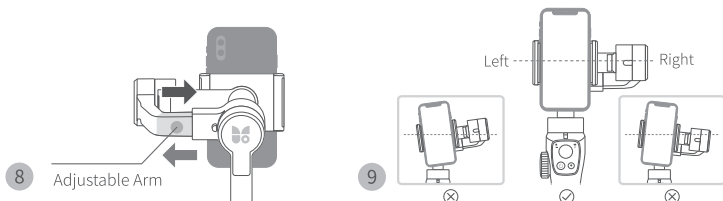
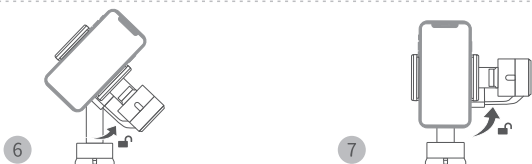
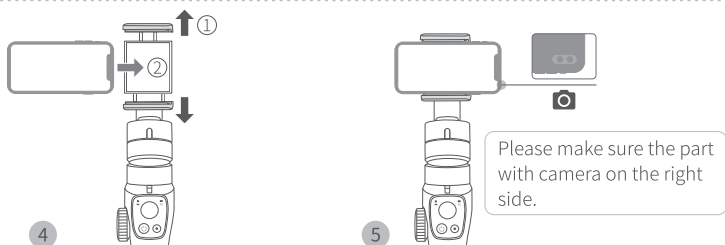
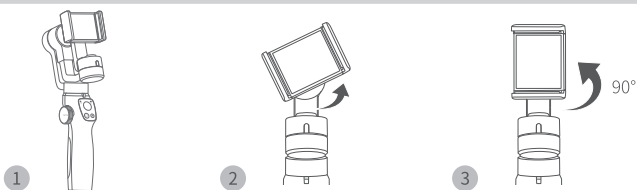
iOS

## Mount and Balance Your Phone Horizontally



Tips: If your phone is too heavy to be balanced by the adjustable arm, you can stick the counterweight onto the tilt motor.

## Mount and Balance Your Phone Vertically

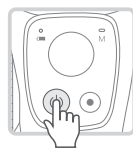


## Connect to Capture 2s

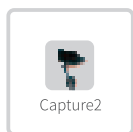
**Step 1:**  
Enable the Bluetooth on your mobile phone.



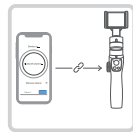
**Step 2:**  
Long press the power button for 3 seconds to turn on the gimbal.



**Step 3:**  
Launch Capture2 App.



**Step 4:**  
Follow the in-app instructions to connect to Capture 2s.



Tips: After the above steps are completed, if you encounter problems, please refer to the troubleshooting guide on page 22 of the manual.