

INSTRUCTION MANUAL **POLAR LED light**

LED scrolling sign
Full RGB color 40"x8"
With WiFi P10

(software is compatible with WINDOWS XP,7,10
and ANDROID mobile phones)



INSTRUCTION MANUAL:

For computer wifi : page 1
For computer USB: page 11
For mobile phone : page 12



[email address for support:](mailto:lightsourcing@outlook.com)
lightsourcing@outlook.com

WiFi password: 12345678

VIDEO TUTORIAL for software you can find on **YOUTUBE**
search for “ POLAR led light 40x11” video tutorial HC14”

SHORT INSTRUCTIONS

- Connect LED sign to computer or mobile phone WiFi.
- Start software for LED sign - **HCLED**
- Make your text in software
- Send text to LED sign (button “ **WIFI_SEND**”- blue button)
- Disconnect LED sign from Laptop or mobile phone WiFi

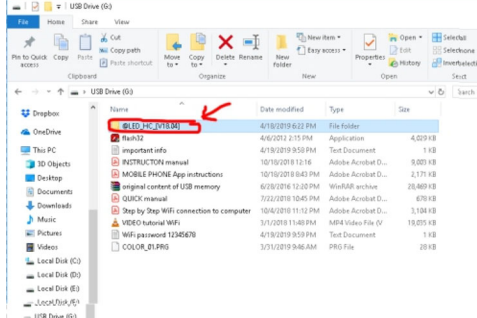
STEP by STEP WiFi connection to computer

VIDEO TUTORIAL for software you can find on **YOUTUBE**
search for “ POLAR led light 40x11” video tutorial Hc14”

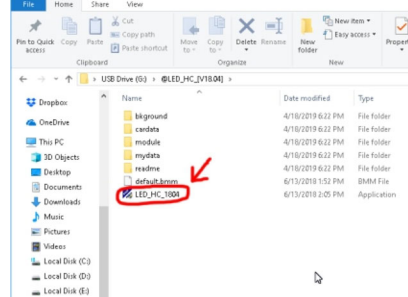
1. Connect LED sign to power outlet and turn on (switch ON/OFF at the right side)
2. Insert USB flash memory to computer
You can run the software from USB flash memory or copy all contents from USB to your computer and start the software without USB flash memory (for WIFI mode).
3. Insert USB flash memory into your PC or laptop (Windows base computer). USB flash memory is attached to power cord cable.
4. RUN software from USB flash memory :/HCLED_19.028/HCLED.exe



double click to open “HCLED 19.028” directory



double click on “HCLED” to RUN software



4. **Connect your LED sign to PC or Laptop** by selecting WiFi icon at the bottom left corner of your screen (arrow 1 on PHOTO 1). Select your LED sign with name **HC-LED[XXXXXX]** XXXXXX- will be set of numbers arrow 2 in PHOTO 1. If password is required input **12345678**. press button **NEXT** (arrow 3 in PHOTO 1).

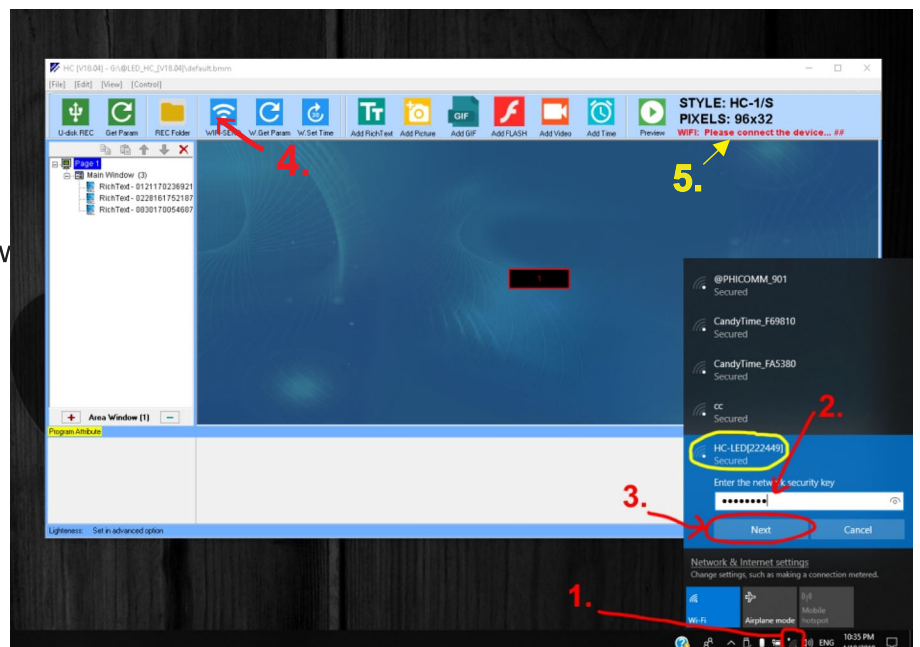
When your LED sign is successfully connected this text will change from RED to GREEN color and will write name of LED sign: HC-LED[XXXXXX] . (arrow 5 on photo 1).

If you can't connect to LED sign WiFi please move closer to LED sign.



PHOTO 1

LED SIGN IS CONNECTED



After connecting computer to LED sign WIFI icon, there will be little yellow warning sign on computer WIFI icon, it means that computer is connected to LED sign but you will not have internet because LED sign doesn't provide internet.

After completing use software to program LED sign, please disconnect wifi from led sign and connect to your regular WIFI network.

5. Make your own text on LED sign with this software (explained in instruction manual page 2 to page 9) and press button “**WIFI-SEND**” (arrow 4 on photo 1) to send your text to led sign in window Perform REC processing , are you sure ? answer YES.
wait till program finish uploading to LED sign “ Upload file successfully” then close REC FOLDER window .If you have message “ Time-out error” when you send text to LED sign, move closer to LED sign. Because distance depend on computer wifi strength and obstacles .
6. After completing program of your LED sign, disconnect LED sign from your computer WIFI : Photo 1 arrow 1 and select led sign **HC-LED[XXXXXX]** then press button **DISCONNECT** and connect WIFI to your home or work WIFI to get internet connection

AFTER FINISH INPUTTING YOUR text SAVE YOUR PROJECT with “SAVE “ from FILE menu

If you are using USB flash memory programming method:

RECORDING YOUR PROJECT TO USB MEMORY

- When you finish you can press “**U-disk REC**” to record your project to USB memory and wait for the program finish recording (around 5 to 30 seconds) PHOTO 4. After successful recording you will have message like on PHOTO 5. **USB flash memory must be in computer USB port.**
- Disconnect USB flash memory from computer.
- Insert USB flash memory into your LED sign and wait for blinking “**LOAD**” stops and displays “**OK**”.
- Disconnect USB flash memory from LED sign.
- YOUR LED sign should now display your text.

PHOTO 5

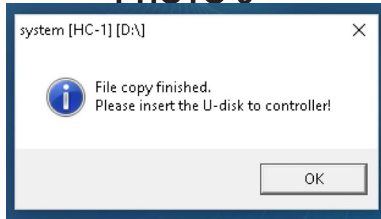
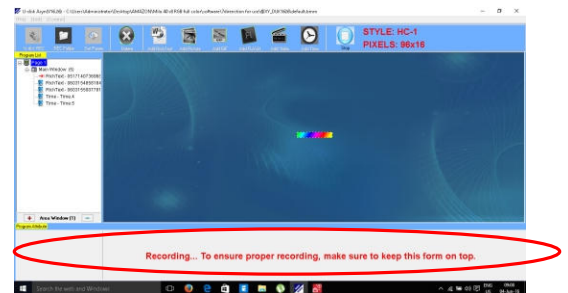


PHOTO 4



If it takes too long time on recording to USB flash memory then change text to smaller size and change the type of text to ARIAL. Make one line of text maximum 100 characters.

If you are using WiFi connection programming method:

TRANSFER your project to LED sign with WiFi:

- Connect LED sign to computer WiFi (explained step by step on first page)
- Press button “**WIFI-SEND**” to send your project to LED sign.
You will see window with question “Perform REC processing “ answer with YES. PHOTO 6.
- Wait to finish transfer to LED sign . PHOTO 7.
- When transfer is finished you will have window with text :Upload file successfully . PHOTO 8..
- YOUR LED sign should now display your text.
- Disconnect computer WiFi from LED sign
- **If you have message “ Time-out error” when you send text to LED sign, move closer to LED sign. Because distance depend on computer wifi strength and obsticals .**

PHOTO 6

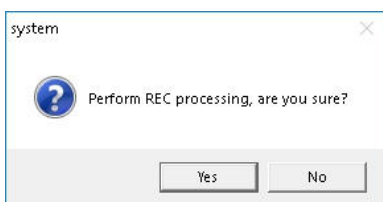


PHOTO 7

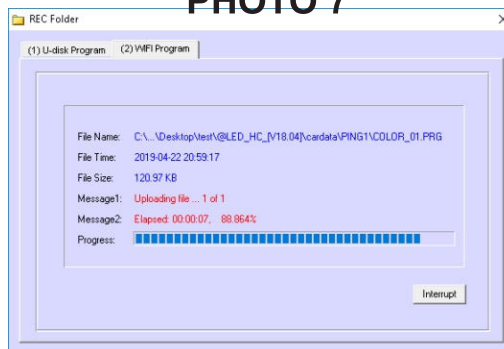
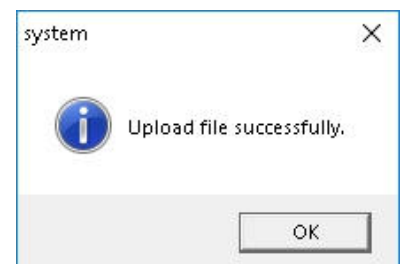


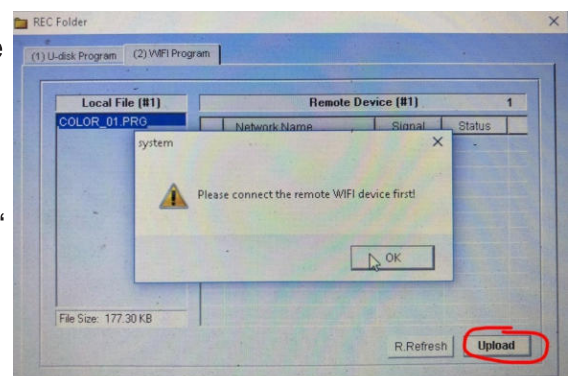
PHOTO 8



If computer don't send your project to LED sign please computer WIFI.

Close software and run it again .

If you get message same like in this photo : “**please connect to remote WiFi device first!**” “press “**UPLOAD**” again or “**WIFI-SEND**” to repeat sending process. If this error repeats please move closer to computer WiFi or check if LED sign is connected to computer WiFi.

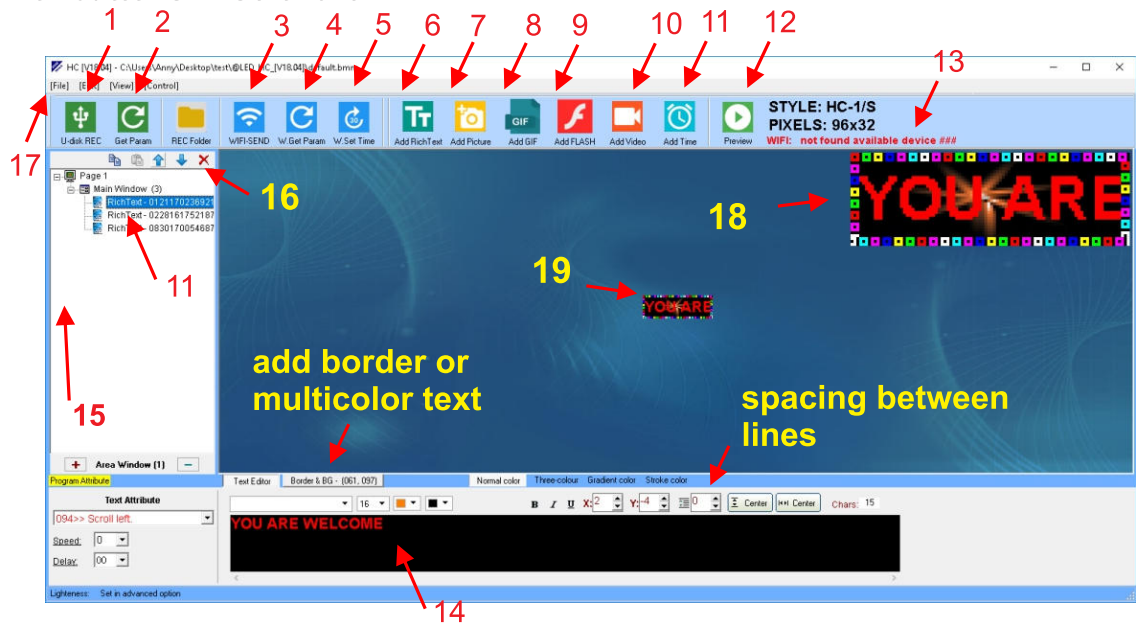


INSTRUCTION MANUAL

Basic instructions for program use:

DESCRIPTION of buttons in software

PHOTO 1



DESCRIPTION of buttons in software:

1. “U-disk REC” button is for recording your finished project to USB flash memory for LED sign, If you using USB programming mode.
2. Obtain parameter for LED sign from USB memory (parameter is already in factory mode , no need to set).
- 3.”WIFI-SEND” button is to send your project to LED sign .If you use WIFI programming method. For this method you first must connect LED sign WIFI to your computer WIFI.
4. Obtain parameter for LED sign from USB memory (parameter is already in factory mode , no need to set). If you are using with WIFI programming method.
5. Set correct time and date , If you use WIFI connection
6. Press this Button “Add Rich Text” to add text in your project
7. Press this button “Add Picture” to add IMAGE to your project (max resolution of this LED sign is 150 x50 pixels, use small images, photos, video, GIF or Flash files), if you load big photo or video LED sign will stop working and then you need to check in troubleshooting to get the way to solve problem.
8. ADD Gif animation
9. ADD flash animation
10. ADD video , Video is not supported for this model of LED sign.
11. ADD clock, date or day to your project. For this LED sign use “clock-digital” option.
12. By pressing “Preview” button you can see how your project will look when you load it to LED sign. (press STOP to stop preview).
13. If LED sign is connected to computer WIFI it will be green text with name of LED sign . If led sign is not connected to WIFI this text will be in red color (for USB mode text will be in red color).
14. Window where you input your text for LED sign.
- 15.Main window for items that you have in your project, you can delete unwanted by pressing button 16 on photo 1.
17. Main Menu for software. In FILE menu you can choose to save your project or open already saved one. Or choose one of 8 provided languages for use. Menu “Control” is only for service use .
18. Zoom window (you can manage zoom from file menu option ZOOM).
19. Presentation window, shows how your text will look on LED sign.

After you finish your project you must press “U_Disc REC” button to transfer all to USB flash memory (If you use USB method of programming).

- For this method USB flash memory must be in computer USB port.

After you finish your project you must press “WIFI-SEND” button to transfer all to LED sign (If you use WIFI method of programming).

- For this method LED sign must be first conected to computer WIFI.

13. ZOOM

PHOTO 3

PHOTO 4

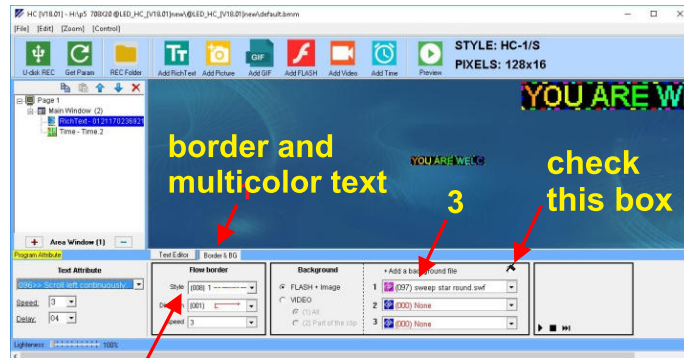
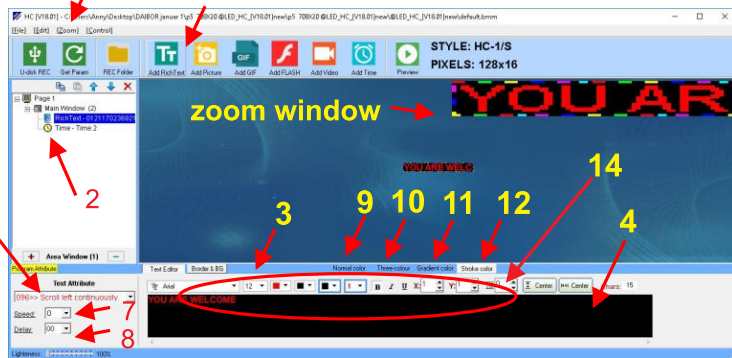


Photo 3: INPUT NEW TEXT to your project:

1. Press “**Add Rich Text**” button to add new text, “**Reach text-number**” will appear in window 2.
2. This window shows all items that your project contains: text, clock, image...
3. In this circle marked area you can chose FONT, COLOR, TYPE and vertical and horizontal position of text by changing values in X and Y boxes. Size of FONT should be smaller then 16.
4. This window is for inputting your text, if you want to change font or color just mark that part of text with right mouse click and chose font and color for that part of text.
5. In this window you can see how your text looks on LED sign
6. In this pull down menu you can select one of 60 ways to present your text : scroll left or right, down or up....., most common is “**000-Appear**” or “**094< scroll left**”.
7. Speed of scrolling text (normal value is 0 to 3)
8. In DELAY drop down menu you enter value to set how long text will be shown on LED sign display. (standard value is 2 to 5).
9. Select this tab to present text in normal color (usually one color).
- 10,11. Choose one of this tabs to present text in three color mode or multi color mode in spectrum of colors that you select from 1 to 4 (preset color options).
12. “Stroke color” -Select this tab to add border around letters , choose one of colors for border.
- 9,10,11,12 is explained on next page.
13. ZOOM function , enables you to zoom text that will be displayed on LED sign.

One row of text should not exceed 100 characters. Size of text maximum 12.

If you have any problems with presenting text on LED sign then mark all text and select font type ARIAL.

PHOTO 4:

1. Click on this tab “**Border & BG**” to add border around text or choose multicolor presenting of text.
2. Choose border style , direction of border flow and speed for border around text.
3. In this drop-down menu you can choose multicolor presenting of text , most effective presenting is “**dynamic rainbow word1**” , or any other mode that you like for your text.

Additional text color attributes :



Border &BG - with this tab in text editor you can:

1. Add border around text.
2. Select multicolor filling of text , best mode is (0001) Dynamic word rainbow1.



Three-colour tab - with this tab in text editor you can:

Add three color filling of text

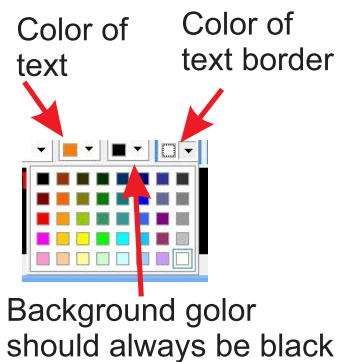
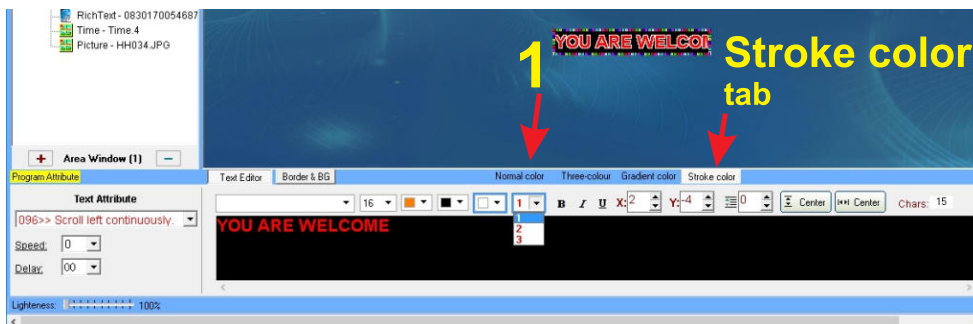
1. Select mode of different filling for text from 1 to 6.



Gradient color tab - with this tab in text editor you can:

Add gradient color filling to text (text will have transition from colors)

1. Select mode of different gradient filling for text from 1 to 6.



Stroke color tab - with this tab in text editor you can:

Add border around letters

1. Select thickens of border around letters (from 1 to 3).
2. Select color of border and color of text (background should be black color).

AFTER FINISH INPUTTING YOUR text SAVE YOUR PROJECT with “SAVE “ from FILE menu

If you are using USB flash memory programming method: RECORDING YOUR PROJECT TO USB MEMORY

- When you finish you can press “**U-disk REC**” to record your project to USB memory and wait for the program finish recording (around 5 to 30 seconds) PHOTO 4. After successful recording you will have message like on PHOTO 5. **USB flash memory must be in computer USB port.**
- Disconnect USB flash memory from computer.
- Insert USB flash memory into your LED sign and wait for blinking “**LOAD**” stops and displays “**OK**”.
- Disconnect USB flash memory from LED sign.
- YOUR LED sign should now display your text.

PHOTO 5

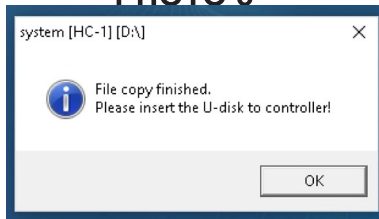
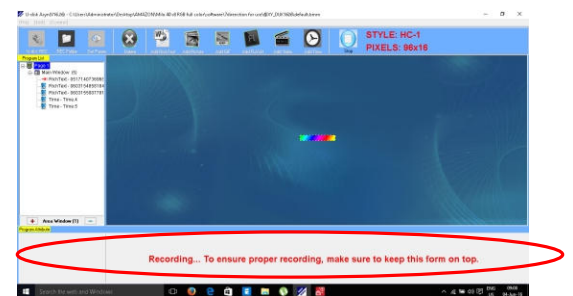


PHOTO 4



If it takes too long time on recording to USB flash memory then change text to smaller size and change the type of text to ARIAL. Make one line of text maximum 100 characters.

If you are using WiFi connection programming method:

TRANSFER your project to LED sign with WiFi:

- Connect LED sign to computer WiFi (explained step by step on first page)
- Press button “**WIFI-SEND**” to send your project to LED sign.
You will see window with question “Perform REC processing “ answer with YES. PHOTO 6.
- Wait to finish transfer to LED sign . PHOTO 7.
- When transfer is finished you will have window with text :Upload file successfully . PHOTO 8..
- YOUR LED sign should now display your text.
- Disconnect computer WiFi from LED sign
- **If you have message “ Time-out error” when you send text to LED sign, move closer to LED sign. Because distance depend on computer wifi strength and obsticals .**

PHOTO 6

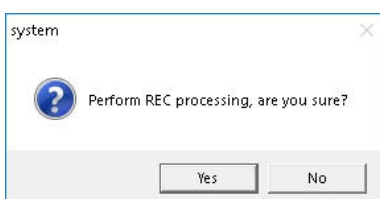


PHOTO 7

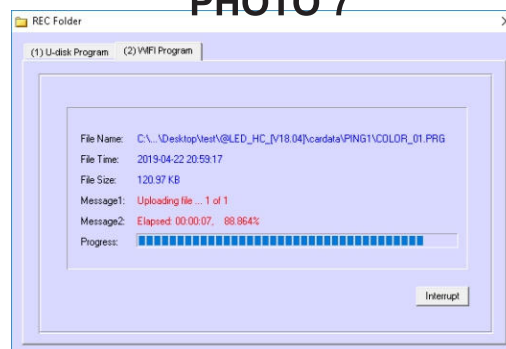
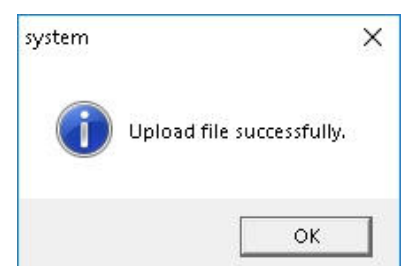


PHOTO 8



If computer don't send your project to LED sign please check if LED sign is connected to computer WIFI.

Close software and run it again .

If you get message same like in this photo : “**please connect to remote WiFi device first!**” “press “**UPLOAD**” again or “**WIFI-SEND**” to repeat sending process. If this error repeats please move closer to computer WiFi or check if LED sign is connected to computer WiFi.

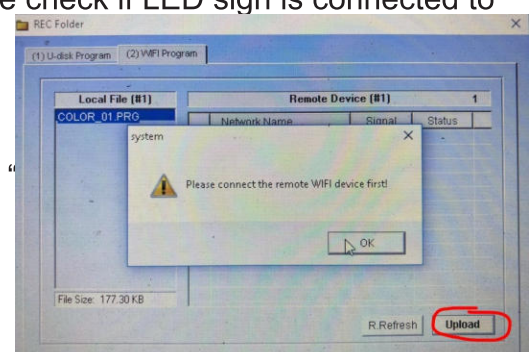


PHOTO 5

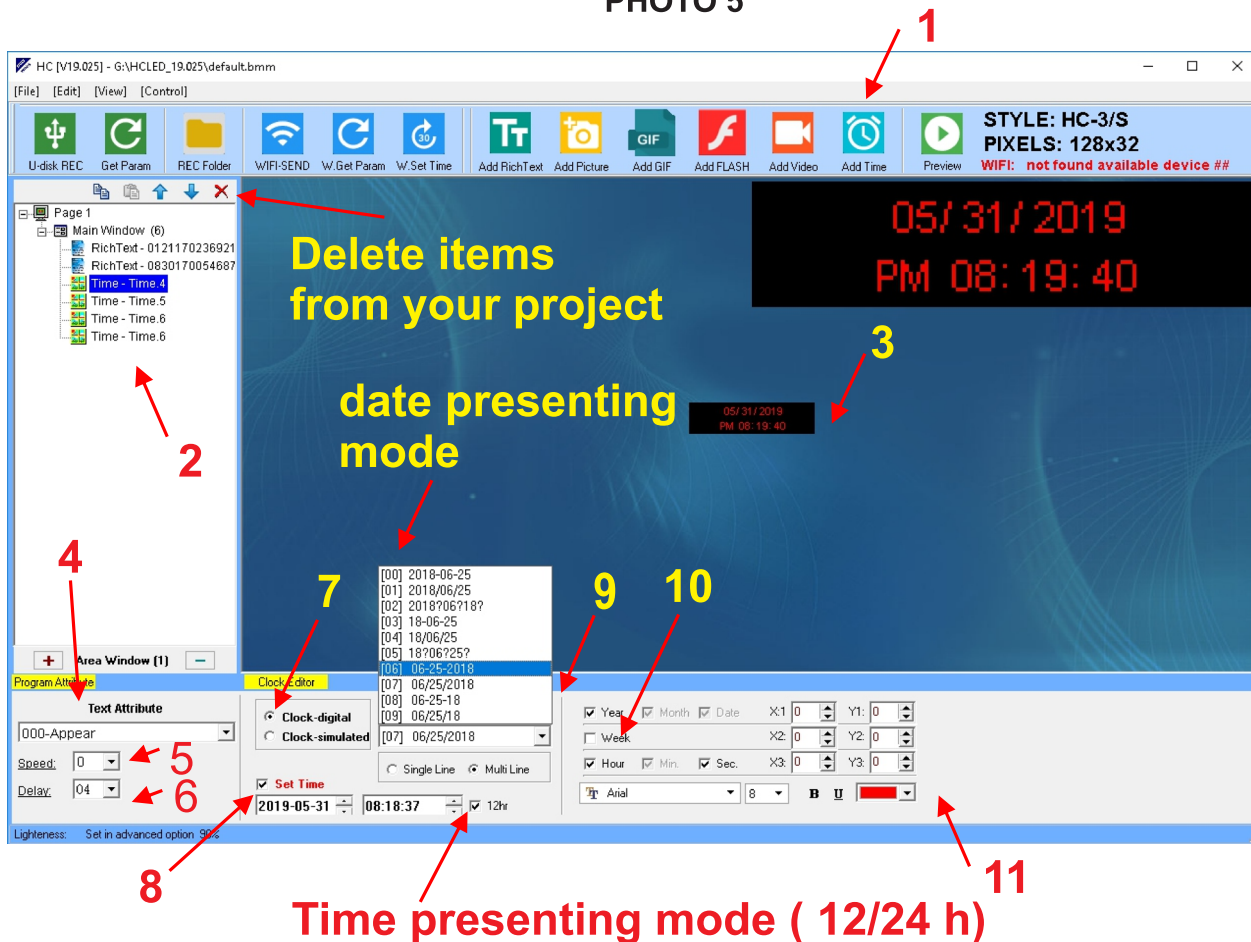


Photo 5:
INPUT TIME, DAY or DATE to your project:

1. Press “Add Time” button to add new time, “Time-Time number” will appear in window 2
 2. This window shows all items that your project contains.
 3. In this window you can see how time will look on your LED sign
 4. In this pull down menu you can choose one of many ways to present your time (the best mode to select for presenting the TIME is : “ 000-appear”).
 5. Speed of moving text you can select value 2.
 6. Delay is how long TIME will be presented on LED sign (normal value is 5)
 7. Choose between analog and digital clock, for this size of LED sign better visible presenting is DIGITAL “Clock-digital”.
 8. **You can set correct time and date by checking box “Set Time”.**
 9. Choose FRAME type and color that will surround the clock .
 10. Select what will be shown on LED sign, on this LED sign you can select TIME **or** DATE by marking the check box , only one can be presented because this LED sign can present only one row of text . WEEK check box leave blank (not checked).
- By setting X and Y values you can adjust vertical and horizontal placement of time on display.
 11. Choose font and color of TIME. **Size of FONT for TIME and DATE should be 8.** (if it's larger than time or date will not be shown on LED sign correctly).
- TO change TIME to 12 or 24 h format or format of DATE see photo 5 arrows TIME PRESENTING MODE and DATE PRESENTING MODE.

After finish adding text you can add another text, photo or time , save your project by selecting “SAVE ” option from FILE menu .

PHOTO 6



PHOTO 7

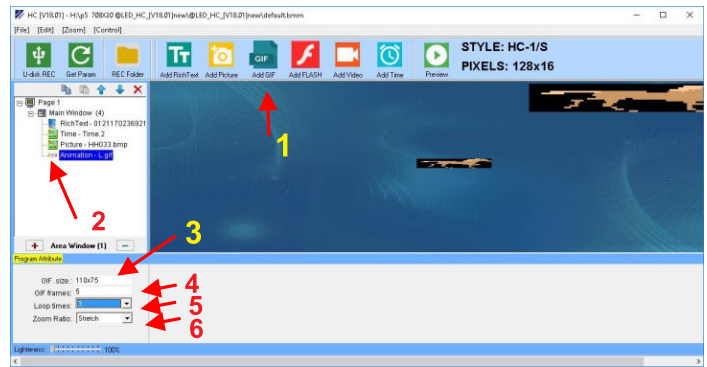


Photo 6: INPUT IMAGE to your project:

1. Press “**Add Picture**” button to add new image, “**Picture** number” will appear in window 2.
2. This window shows all items that your project contains.
3. In this drop down menu you can select how will be presented on LED sign, most common is “**000-Appear**” or “**094< scroll left**”.
4. This window will show the size of image or photo (should not be more than 100 x 25 pixels) , perfect size of image for this LED sign is **96 x 16** pixels.
5. In this drop down menu you can select how photo or image will be presented if it is larger in pixels then the resolution of screen on LED sign : **stretch** (if it is smaller to stretch image to whole screen), **full size** or **fit image** to LED sign.
6. Delay is how much time will be presented on LED sign (normal value is 5), speed 2.

Photo 7: INPUT GIF animation to your project:

1. Press “**Add Gif**” button to add new time, “**Animation**-number” will appear in window 2.
2. This window shows all items that your project contains.
3. This window will show the size of gif animation (should not be more than 100 x 30 pixels) , perfect size of gif animation for this LED sign is **96 x 16** pixels.
4. Gif frames - how many frames will be shown from gif animation.
5. Loop times- how many times to repeat showing gif animation.
6. Delay is how much time will be presented on LED sign (normal value is 5)
7. Zoom ratio- choose how to present gif animation if it is smaller or bigger resolution than 96 x 16 pixels.

After finish adding text you can add another text, photo or time , save your project by selecting “**SAVE** ” option from **FILE** menu .

AFTER FINISH INPUTTING YOUR text SAVE YOUR PROJECT with “SAVE** “ from **FILE** menu**

Send your project to LED sign . Please see page 3 .

WiFi range is 10 to 32 feet depend on computer or mobile phone wifi range and obsacles

PHOTO 8

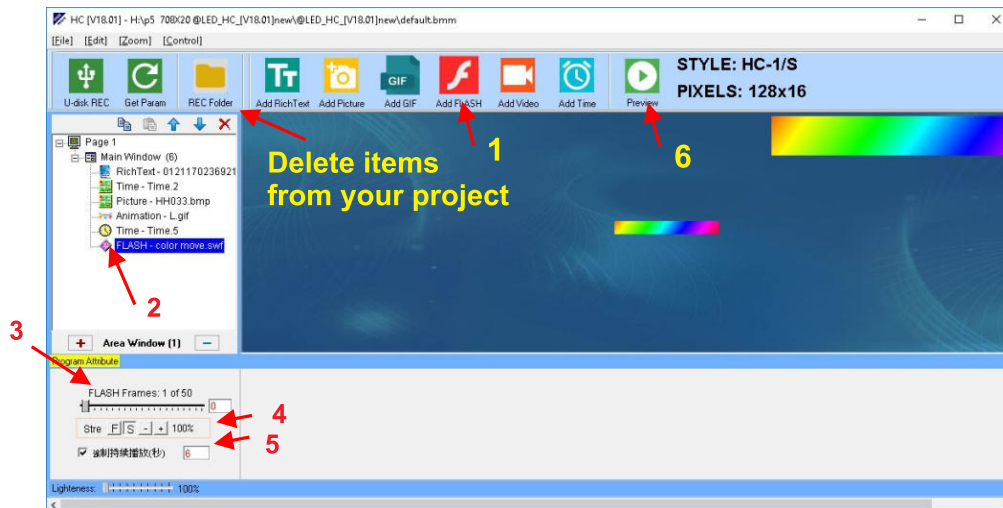


Photo 8:
INPUT FLASH animation to your project:

This is LED sign with resolution 96 x16 and could not load too big flash animation

1. Press “**Add Flash**” button to add new flash file, “**Flash-name**” will appear in window 2.
2. This window shows all items that your project contains.
3. GIF number of frames to be presented on display. Size in pixels for flash file is maximum 200 x 50 pixels, recommended size is 96x16 pixels.
4. You can set zoom ratio for flash file (how flash file will fit in LED sign screen).
5. How many times GIF file to be presented on LED sign.

6. PREVIEW button will **PLAY** your project so you can see how it will look on LED sign after transferring to LED sign.

AFTER FINISH INPUTTING YOUR text SAVE YOUR PROJECT with “SAVE “ from FILE menu
Send your project to LED sign . Please see page 3 .

If you experience problem with software or LED sign is having issues then you can reset LED sign to factory state with this instructions:

- Copy file “ORIGINAL USB content.zip” from USB flash memory to your PC.
- Delete all old files from USB flash memory.
- Unpack (UNZIP) files from file “ORIGINAL USB content.zip “ ,
- Copy unpacked files to USB flash memory,
- Insert USB flash memory to your LED sign and LED sign will be reset to original factory state.
- You can use any other USB flash not bigger than 4GB formatted in FAT 32 format.

TROUBLESHOOTING

If you have message from software that file c64.dll or csw.bin file is missing then anti virus delete them by mistake, solution is to restore this files :

- This files are located on USB flash memory in directory USB memory
: \HCLD_19.028\mydata\mysys
- Will be preferable to turn off anti virus software to prevent deleting this files again.
- Go to that directory and unpack (UNZIP) file c64csw.zip in same place.
- Files are restored and software can run again.

If you can't connect to LED sign WiFi please move closer to LED sign. If you have message " Time-out error" when you send text to LED sign, move closer to LED sign. Because distance depend on computer wifi strength and obstacles .

If you experience more **BLUE** color on LED sign than it should be after you entered your text, then in rare cases LED sign software is not compatible with your laptop or PC graphic card , please use any other laptop or PC to make your LED sign work.

After saving your project to USB memory with "U-Disk REC" if there is no change on LED sign display when you insert USB memory to LED sign, the problem might be the speed of writing to USB flash memory is not correct (computer write with different speed from the speed it needs). The best solution is to make your program with any other laptop or PC.

after saving to USB flash memory, if you see everything **except text** then change font or color of text and text will be visible again.

If your fonts on computer screen are not clear after using software then you must turn back on **CLEAR TYPE FONT**. You can find it by typing "Adjust clear type font " in windows search bar bottom at the left corner of desktop. Then check box for CLEAR TYPE FONT and confirm.

If you experience problem with software or **LED sign or having issues** then you can reset LED sign to factory state with this instructions:

- Copy file "ORIGINAL USB content.zip" from USB flash memory to your PC.
- Delete all old files from USB flash memory.
- Unpack (UNZIP) files from file "ORIGINAL USB content.zip " ,
- Copy unpacked files to USB flash memory,
- Insert USB flash memory to your LED sign and LED sign will be reset to original factory state.
- You can use any other USB flash not bigger then 4GB formatted in FAT 32 format.

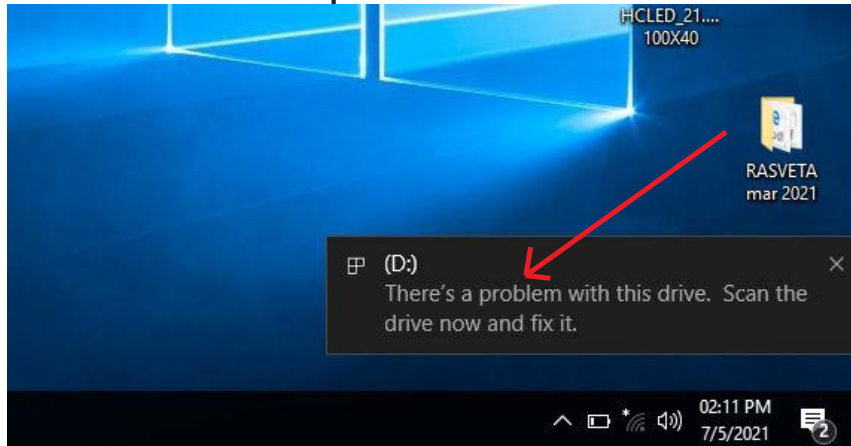
If after press "**U-Disk REC**" button it takes too much time on loading to USB flash memory then one of items in your project is with error :

- Wrong font : select all text and change size of font to 12 and type of font set to ARIAL
- Too long text. Maximum is 100 characters in one row of text.
- Inappropriate speed of presenting text

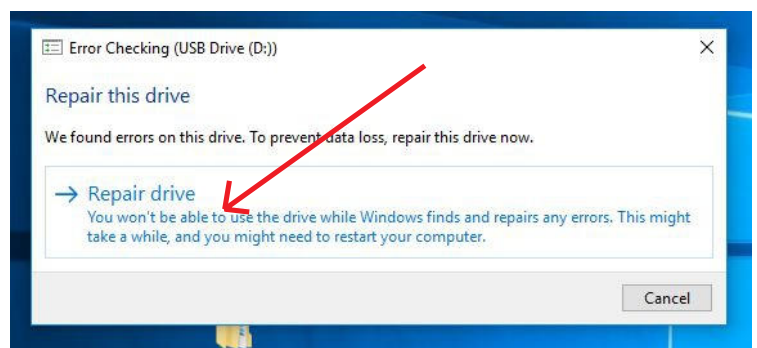
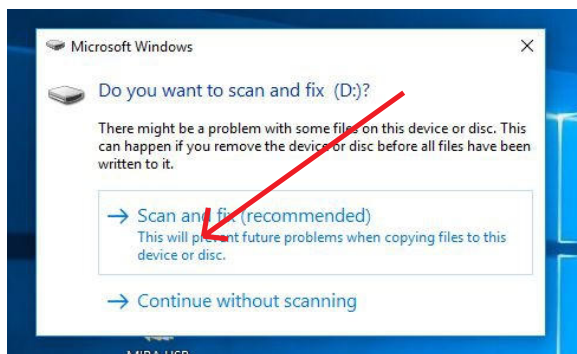
Please delete some of items in program and do "**U-Disk REC**" again.

TROUBLESHOOTING

If you have error message “**THERE’S A PROBLEM WITH THIS DRIVE**” when you insert USB flash drive to computer USB port like is shown on next photo:



Then select that error message and chose option:
Scan and Fix (recomended)
Then select option : **Repair drive**



After repair is finished select :Close on next window , and USB flash drive will work normally.



INSTRUCTION MANUAL

FOR USB programming method

PHOTO 1

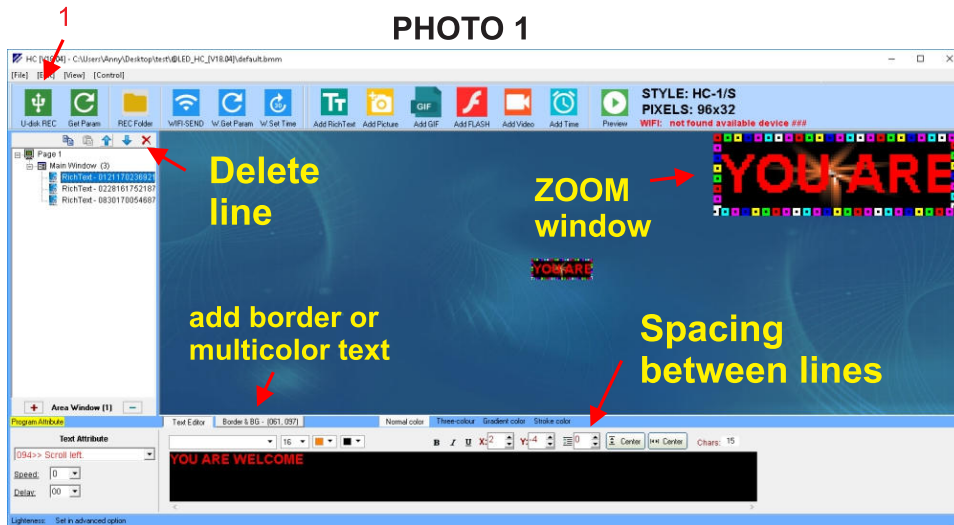


PHOTO 2



**Password for advanced settings:
led888**

To use USB programming method USB flash memory must be in computer USB port:

1. Insert USB flash memory to computer USB port.
Run software : USB flash memory:\HCLED_19.028\HCLED.exe
2. Make your project how is described from PAGE 2 to PAGE 9.
3. After you finish making your project, transfer all your work to USB flash memory by pressing **“U-Disk REC”** button (arrow 1 in photo 1) . Wait 5 to 60 seconds for transfer to complete (depends on how many lines you have in your project).
One Rich text line should be not longer than 100 characters .
5. When transfer to USB flash finished you will be notified : “File transfer finished , please insert U-disk to controller” .
Save your project option “SAVE” from FILE menu.
6. Remove USB flash memory from computer and insert to LED sign
Wait for blinking **“LOAD”** stops, when LED sign shows **“OK”** on display, pull out USB flash memory from LED sign.
7. LED sign should present your project.



Solutions for possible errors in project:

- If LED sign skip some of lines in project:
Select all text and change text into smaller size, and change the type of text into ARAL.
Check if there is any line of text with more then 100 characters (100 is maximum number in one line).
Check if time and date is in proper size (usually 10 to 14 pixels).
- If Recording to USB flash memory takes too long time, check size of text and change type of text to ARIAL.

After you finish your project you must press **“U_Disc REC” button to transfer all to USB flash memory (If you use USB method of programming).**

- For this method USB flash memory must be in computer USB port.

PROGRAM FOR Andoid MOBILE PHONE

PHOTO 12 : SCAN for download app for Android mobile phone



download software and install

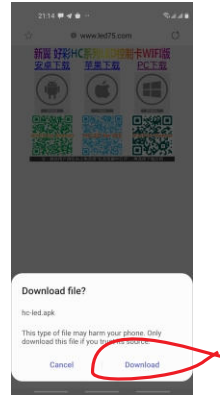
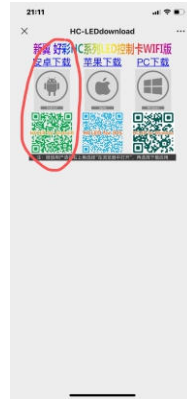


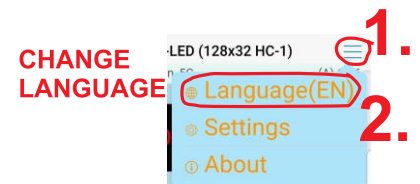
PHOTO 13 program icon



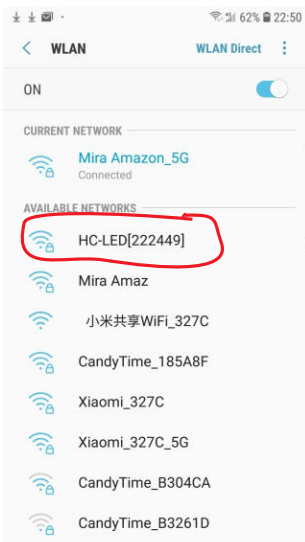
ON **YOUTUBE** search for video instructions :**POLAR led light HCLED mobile phone**

PHOTO 12: Android application for programing your LED sign by mobile phone.
Software for Apple Iphone is on next page.

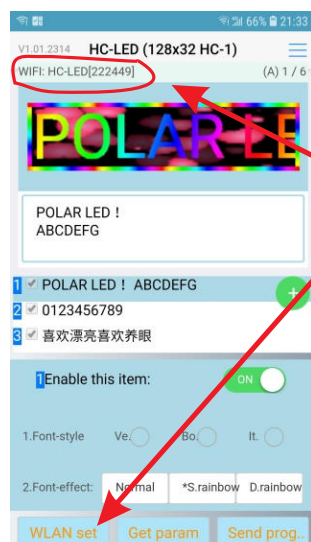
- Scan photo of BAR CODE with your mobile phone and you will get choice to install program for **Android** mobile phone. INSTALL software .
or type this link in to your mobile phone browser:
<http://www.led75.com/wifiapp/appdownload.html>
- If you can't connect to LED sign WiFi please move closer to LED sign.
- After installing you will have application" **HC-LED**" in your phone photo 13.
- **Connect your phone WiFi with LED sign by selecting SETTINGS menu in your mobile phone then choose WiFi menu in settings.** Search for WIFI name : LED sign **HC-LED[XXXXXX]** where XXXXXX- will be set of numbers or letters.
(**WiFi password: 12345678**).**If iPhone do not connect WiFi please repeat this step several times for first time connection.**
- To change language press button on upper right corner in software , then select to change to English language..
- Press ""**Get param**" button to get settings from LED sign.
This button you need to press only when you connect for first time.
- To input new text please refer to instructions on next page.
press "**Send prog..**" button to send text to LED sign after you finish inputting your text.
- After you finished using program disconnect LED sign from mobile phone WiFi .



connect your LED sign to phone WiFi



Properly connected to computer WiFi

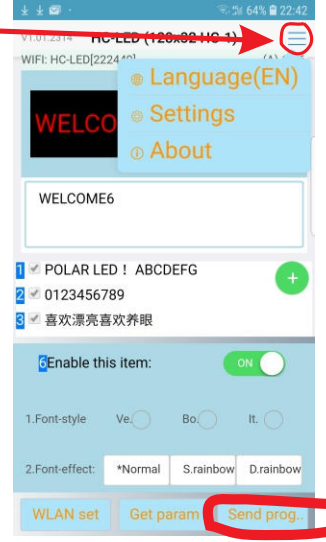


connect LED sign to phone WiFi

Change Language

If you don't have this text then first connect to phone WiFi

Input your text and press "Send prog.."



Software for Apple Iphone mobile phone

PHOTO 12 : SCAN for download app for Apple iPhone.



PHOTO 13 program icon



PHOTO 12: Apple Iphone application for programing your LED sign by mobile phone.

- Scan photo of BAR CODE with your mobile phone and you will get choice Install software from APP store. .

Or search for application : "HCLED " in APP store and press GET to install .

- After installing you will have application " **HC-LED**" in your phone photo 13.

- **Connect your phone WiFi with LED sign by selecting SETTINGS menu in your mobile phone then choose WiFi menu in settings.** Search for WIFI name : LED sign **HC3LED[XXXXXX]** where XXXXXX- will be set of numbers or letters. (**WiFi password: 12345678**).

- If you have message " Time-out error" when you send text to LED sign, move closer to LED sign. Because distance depend on computer wifi strength and obsticals .

- To change language press button on upper right corner in software , then select to change to English language..

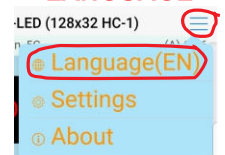
- **Press ""Get param"" button to get settings from LED sign.**

This button you need to press only when you connect for first time.

- To input new text please refer to instructions on next page.
press "**Send prog..**" button to send text to LED sign after you finish inputting your text.

- After you finished using program disconnect LED sign from mobile phone WiFi .

CHANGE LANGUAGE

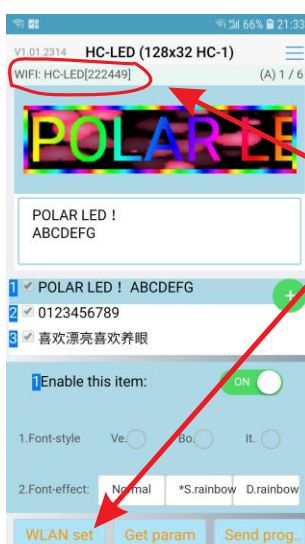
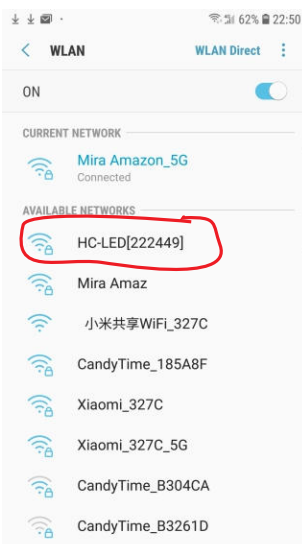


connect your LED sign to phone WiFi

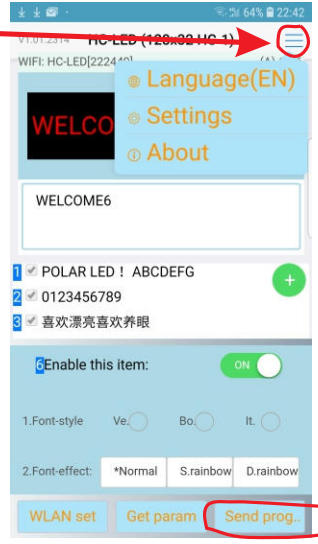
Properly connected to computer WiFi

connect LED sign to phone WiFi

Input your text and press "Send prog.."

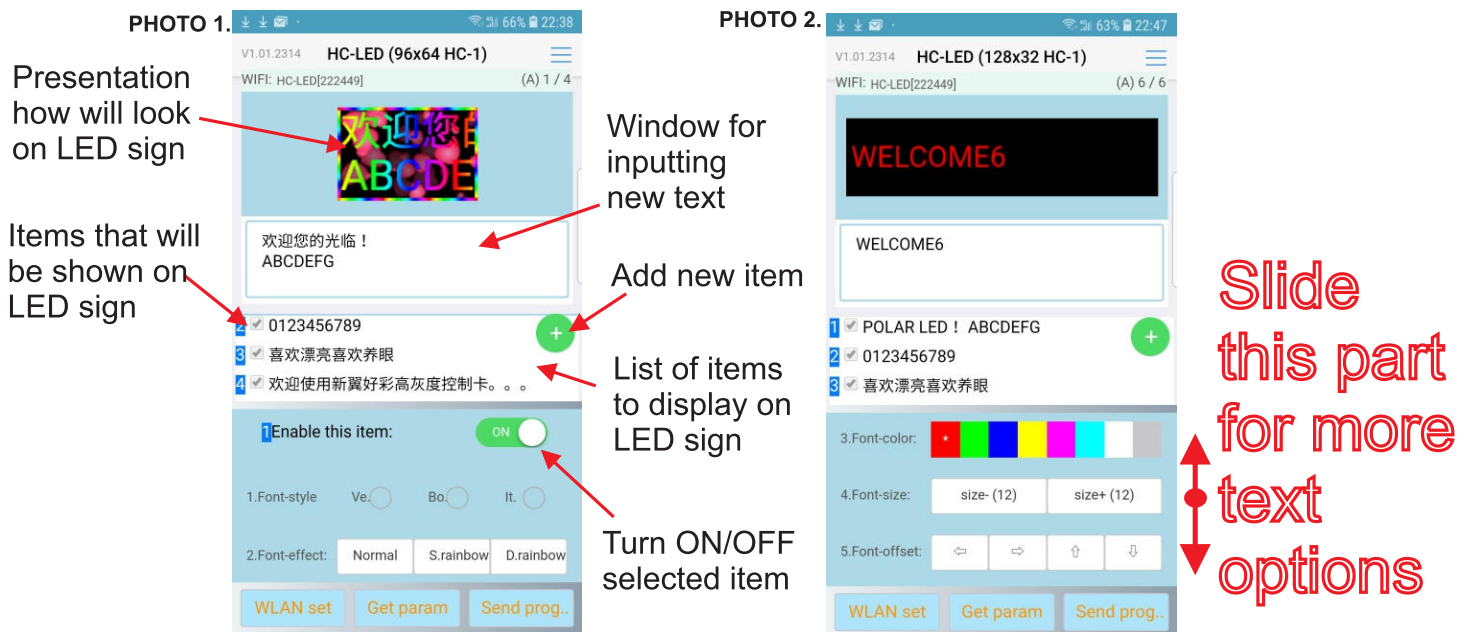


Change Language



If you don't have this text then first connect to phone WiFi

HOW TO INPUT NEW TEXT



To add or edit text select Item in middle window marked with 1,2,3 ... Change text in window for inputting text.

You can change attributes for text in down part of software:

- Enable this Item: show or don't show selected item on LED sign
- 1. Font Style: Ve.: vertical letters , Bo.: bold letters. It.: Italic letter
- 2. Font effect: Normal: single color , S.rainbow, D.rainbow: colorful letters
- 3. Color of text font
- 4. Size of text (font) , Size of font for one line text is best to set to 24 for 2 lines of text set to 12 .
- 5. Font offset : change vertical and horizontal position of text.
- 6. Font-lineSP: Spacing between lines , for 2 lines of text spacing should be set to 0.
- 7. Font effect : Appear - not moving text, scroll up, down, left select to scroll text .
- 8. Font speed: Speed of text scrolling.
- 9. Font delay: How long text will be displayed on LED sign
- 10. Bor-style : Select border around text.
- 11. Bor-direction: Direction of moving border line 12. Bor-speed : speed of border .



14. Background : select background image for your text , you can select one of predefined backgrounds or input new picture from your gallery (If you want to select your picture for background acceptable picture format is JPEG and size not more then 200x50 pixels).
15. Bg-zoom: Type of background picture presentation: Stretch (stretch smaller picture to fit screen, Fit-image: to fit image to screen resolution, Full-image: to put full image to screen - only part 96x16 pixels will be visible).
16. Bg-delay - speed of moving background picture.

When you finish inputting your text press “Send prog” button to send your text to LED sign. LED sign must be connected to mobile phone WiFi. Sending progress will be shown like in photo 1. when sending is successfully finished you will be informed (Photo 2). After you finish sending text to LED sign disconnect LED sign from mobile phone WiFi.

photo 1.

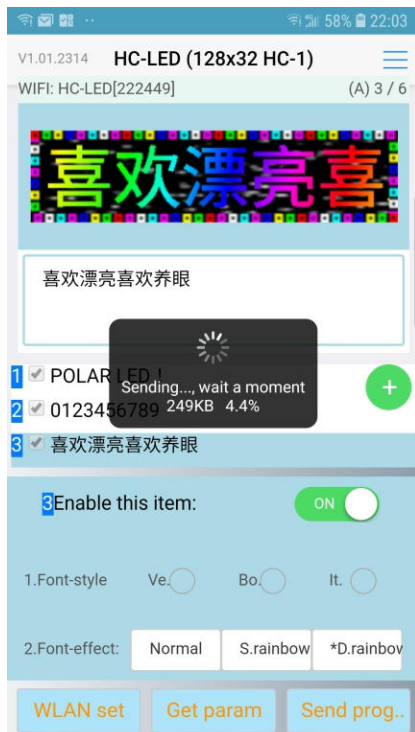
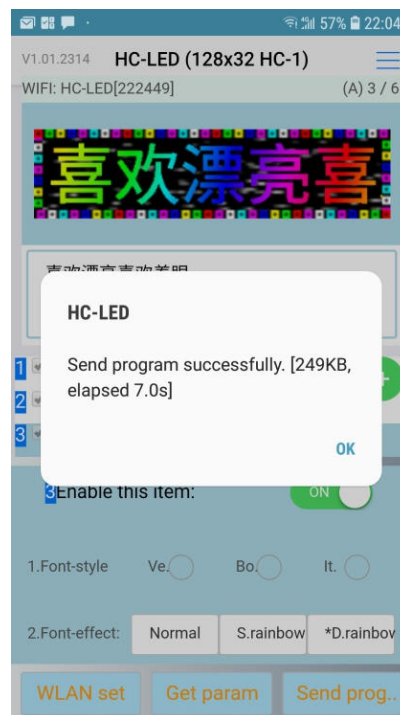


photo 2.



If transfer to LED sign is interrupted like shown in this photo then you must repeat sending to LED sign but first make sure that LED sign is connected to mobile phone WiFi and move your phone closed to LED sign for better WiFi reception.

If you can't connect LED sign to mobile phone WiFi try to turn OFF then again ON mobile phone WiFi. And Turn OFF LED sign and turn again ON.

QUICK INSTRUCTIONS

for mobile phone WIFI connection

- Connect LED sign to mobile phone WIFI . Search for wifi name :HC-LED[XXXXXX] XXXXXX- will be set of numbers . Password is : 12345678
WIFI Connection will display “ no internet connection”, that is because led sign do not provide internet.
- Start (RUN) software **HC-LED** .
- **Press button “Get param “ to obtain parameters from LED sign.**
- Input your text
- Send your text to LED sign with button ‘**send prog..**’
(note : led sign wifi have reach 10 to 30 feet)
(if recording take too long time, then check that each line can't be longer then 100 characters , try to change type of font).
- After you finish sending , connect to your usual wifi network .

QUICK INSTRUCTIONS

for comuter WIFI connection

- Connect LED sign to computer WIFI . Search for wifi name :**HC-LED[XXXXXX]**
XXXXXX- will be set of numbers .Password is : 12345678
WIFI Connection will display “ no internet connection”, that is because led sign do not provide internet.
- Start (RUN) software **HCLED** located on USB flash drive in directory :
:/HCLED_19.028
- Input your text or add time to program.
- Send your text to LED sign with button '**WIFI SEND**'
(note : led sign wifi have reach 10 to 30 feet)
(if recording take too long time, then check that each line can't be longer then 100 characters , try to change type of font).
- After you finish sending , connect to your usual wifi network .

QUICK INSTRUCTIONS

for comuter USB flash drive transfer

- Plug USB flash drive to computer USB port
- Start (RUN) software **HCLED** located on USB flash drive in directory :
:/HCLED_19.028
- Input your text or add time to program
- Save your work to USB flash drive for transfer with Button "**U-disk REC**"
wait till recording is finished.
(if recording take too long time, then check that each line can't be longer then 100 characters , try to change type of font, or do recording without photos)
- Plug USB flash driver to LED sign usb port , wait till transfer is finished .

TECHNICAL DATA

USA, CANADA

Voltage: 85-240 V (USA 110 V)

Power: 60 W (usually below 8W)

Dimension: 40"x8" depth: 1.8",
pixel resolution: 96 x16 (1104 led) P10

Sign without frame: 37.5" x 6.5"

Color: RGB full color

Weight: 5.3 pounds, professional version 12 pounds

Connection : WiFi connection, USB connection

indoor version : for indoor use only.

OUTDOOR version : for outdoor use (not waterproof , only weatherproof)
must be under some cover.

WiFi password : 12345678

WiFi distance is 3 to 10 m , depends on computer or mobile phone WiFi strenght.

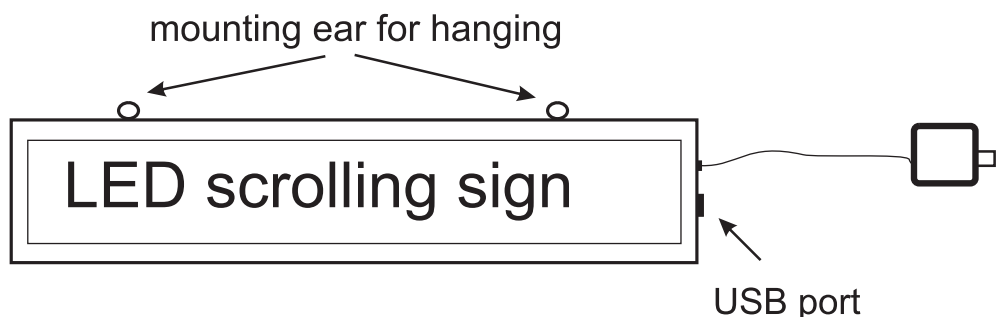
Package includes:

- LED scrolling sign 40"x8" P10
Power adaptor 85-240 V is inside LED sign
WiFi antenna is built inside LED sign
- USB flash memory with software
- Instruction manual

Password for advanced users of software : led888

For additional instructions please write to our email :
lightsourcing@outlook.com

Connectors on LED sign:



**WiFi range is 10 to 32 feet depend on
computer or mobile phone wifi range and
obsacles**

FCC Warning

This device complies with part 15 of the FCC rules. Operation is subject to the following two conditions: (1) this device may not cause harmful interference, and (2) this device must accept any interference received, including interference that may cause undesired operation.

Changes or modifications not expressly approved by the party responsible for compliance could void the user's authority to operate the equipment.

NOTE: This equipment has been tested and found to comply with the limits for a Class B digital device, pursuant to part 15 of the FCC Rules. These limits are designed to provide reasonable protection against harmful interference in a residential installation. This equipment generates uses and can radiate radio frequency energy and, if not installed and used in accordance with the instructions, may cause harmful interference to radio communications. However, there is no guarantee that interference will not occur in a particular installation. If this equipment does cause harmful interference to radio or television reception, which can be determined by turning the equipment off and on, the user is encouraged to try to correct the interference by one or more of the following measures:

- Reorient or relocate the receiving antenna.
- Increase the separation between the equipment and receiver.
- Connect the equipment into an outlet on a circuit different from that to which the receiver is connected.
- Consult the dealer or an experienced radio/TV technician for help.

Radiation Exposure Statement

This equipment complies with FCC radiation exposure limits set forth for an uncontrolled environment. This equipment should be installed and operated with minimum distance 20cm between the radiator and your body.