



COASTMASTER[®]

QUICK START GUIDE

532709-3EN_B

INTRODUCTION

Humminbird[®] CoastMaster[®] chart cards are compatible with **HELIX[®] G3, G3N and G4N** control heads with chartplotting capabilities and **all APEX[™] and SOLIX[®]** control heads. To review the latest compatibility information and to download a detailed CoastMaster Chart Card user guide, visit our Web site at humminbird.com.

This quick start guide and the CoastMaster user guide contain instructions that apply to your Humminbird control head[s] as follows:

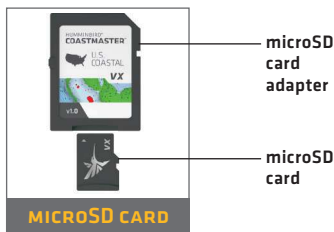
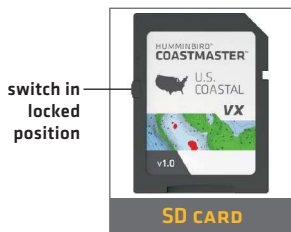
- APEX Series
- SOLIX Series
- HELIX Series

➤ HUMMINBIRD COASTMASTER CHART CARDS

Your control head is compatible with either an SD card or a microSD card. It is important to note the following guidelines:

⚠ WARNING! Do NOT delete or change the contents of your chart card. Changing the card will permanently damage it.

- Confirm the chart card is locked [see the illustrations below].
- Do not force the card into the slot. The card should click easily into place.
- **Do not leave the card slot cover open.** Close the slot cover to prevent water damage to the unit.



GETTING STARTED

➤ POWER ON

1. Press the POWER key.
2. Choose your startup mode. If you are **on the water with GPS reception**, select Normal mode. If you are **off the water without GPS reception**, select Simulator mode.

➤ CHECK THE CURRENT SOFTWARE VERSION

It is important to install the latest software update to enable the Humminbird CoastMaster chart card on your control head.

CoastMaster requires the following software versions:

APEX/SOLIX: 3.920 and later

HELIX: 2.380 and later

Your CoastMaster purchase includes a separate SD card with the most recent software update. See the included Humminbird Software and Basemap Update guide for installation instructions.

➤ UPDATE THE BASEMAP (HELIX ONLY)

CoastMaster requires the following basemap versions to operate on HELIX control heads:

HELIX 7 and 8: 2.010 [released 07/2020] and later

All other compatible HELIX models: 1.031 [released 07/2020] and later

See the included Humminbird Software and Basemap Update guide for installation instructions.

➤ OPEN CHART VIEW

APEX/SOLIX:

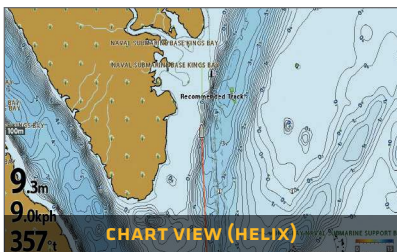
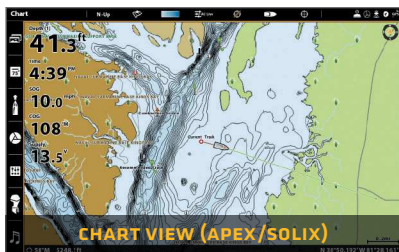
1. Press the HOME key.
2. Select Chart View from the Favorites bar.

HELIX:

1. Press the VIEW key until Chart View is displayed on-screen.

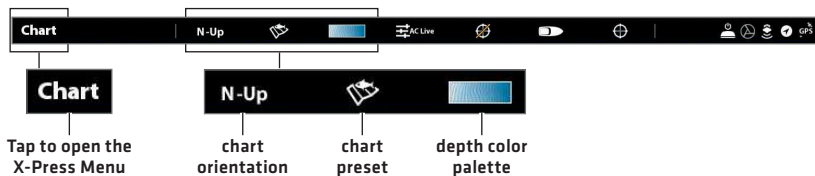
OR

Press and hold the VIEW key to open the Views X-Press Menu. Select Chart > Chart View.



➤ USING THE STATUS BAR (APEX/SOLIX ONLY)

The status bar is located at the top of the screen. It changes to match the on-screen view. You can tap the icons in the status bar to open and close a menu or make a selection.



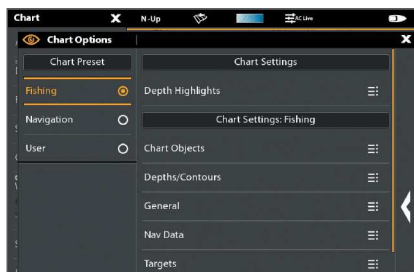
➤ SELECT CHART PRESET

Use Chart Presets to quickly alternate between settings. You can use the default Fishing or Navigation settings provided, or you can create a custom User preset with your preferences. The Fishing and Navigation presets are also fully customizable. You can restore each preset back to its default settings at any time.

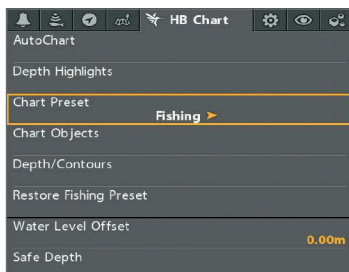
APEX/SOLIX: Chart X-Press Menu > Chart Options > Chart Preset

HELIX: Main Menu > HB Chart tab > Chart Preset

APEX/SOLIX



HELIX



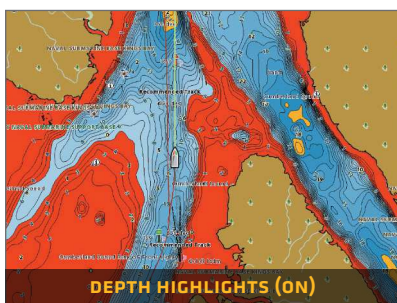
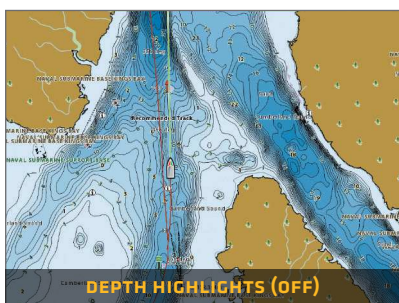
➤ SET DEPTH HIGHLIGHTS

Highlight deep and shallow waters in Chart View and Chart Combo Views using the following CoastMaster features. Highlight colors are customizable.

- **Depth Highlights** allow you to select up to four depth ranges to be highlighted on the chart.
- **Shallow Water Highlight** identifies shallow waters when the depth is equal to or less than the level you set.

APEX/SOLIX: Chart X-Press Menu > Chart Options > Depth Highlights

HELIX: Main Menu > HB Chart tab > Depth Highlights



➤ SET SAFE DEPTH LEVEL

Use the Safe Depth feature to set the minimum depth level for your vessel and to turn on highlights for hazards shallower than that level.

APEX/SOLIX: Home > Settings > Chart > Safe Depth

HELIX: Main Menu > HB Chart tab > Safe Depth

➤ SHOW/HIDE SPOT SOUNDINGS

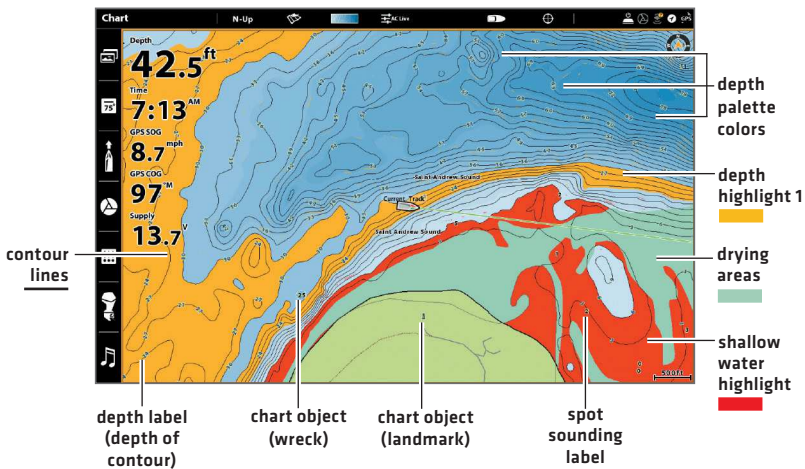
Spot Soundings are depth measurements shown on the chart.

APEX/SOLIX: Chart X-Press Menu > Chart Options > Chart Objects > Navigation > Spot Soundings

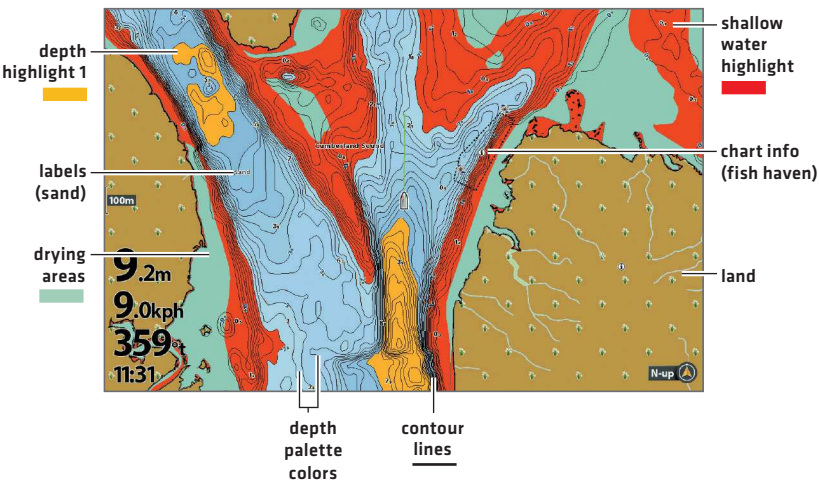
HELIX: Main Menu > HB Chart tab > Chart Objects > Spot Soundings

COASTMASTER IN CHART VIEW

> APEX/SOLIX



> HELIX



TIPS FOR USING THE MAP

➤ MOVE ACROSS THE CHART

APEX/SOLIX



Move the joystick.

HELIX



Press any arrow on the
4-Way Cursor Control key.

➤ SEE MORE ON THE CHART



Zoom in [+] and Zoom out [-] to see more of the chart display [contour lines, depth colors, etc.].

➤ VIEW MAP INFORMATION



Move the cursor to an icon [buoy, marker, etc.], contour line, or position on the chart, and press the CHECK/INFO key. If you have an APEX or SOLIX control head, press the CHECK/INFO key a second time or select Map Info from the Info Menu.

➤ SEARCH YOUR MAP (APEX/SOLIX ONLY)

Search the area for ports, services, tide stations, current stations, and other points of interest. You can also search for the nearest waypoints, routes, and tracks.

1. From the Chart X-Press Menu, select Info.
2. Select Find Nearest.
3. Select an item from the displayed list.

➤ DISPLAY OR HIDE CONTOUR LINES

Hide Contour Lines to see more details on the chart.

APEX/SOLIX: Chart X-Press Menu > Chart Options > Depth/Contours

HELIX: Main Menu > HB Chart tab > Depth/Contours

➤ CHANGE THE CHART ORIENTATION

Select your display preference: North-Up, Head-Up, Course-Up, etc.

APEX/SOLIX: Chart X-Press Menu > Chart Options > General > Orientation

HELIX: Main Menu > Chart tab > Chart Orientation

ADVANCED COASTMASTER FEATURES

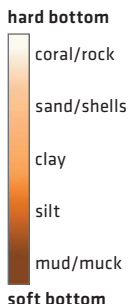
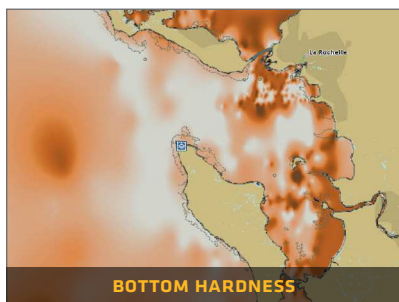
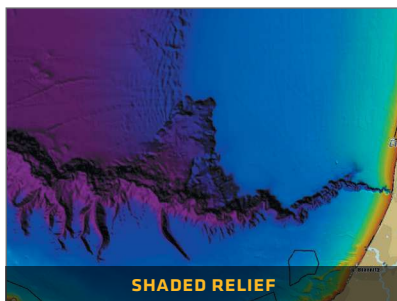
➤ **COASTMASTER PREMIUM: CHANGE LAYERS**

If you have a CoastMaster Premium chart card, you can display layers that show aerial imagery, bottom hardness or shaded relief in Chart View and Chart Combo Views. The transparency of these layers is customizable.

- **Aerial Imagery** can be applied to land only or to both land and water.
- **Bottom Hardness** highlights the composition of the seabed, with light colors indicating a harder bottom (rock, coral, etc.) and dark colors indicating a softer bottom (sand, mud, etc.).
- **Shaded Relief** uses shadows to show features of the seafloor.

APEX/SOLIX: Chart X-Press Menu > Chart Options > Layers

HELIX: Main Menu > HB Chart tab > Layers

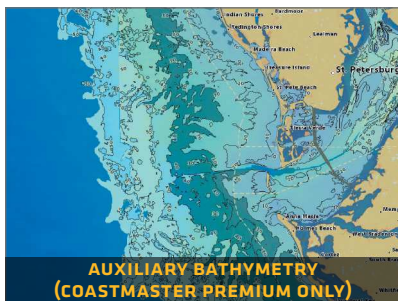
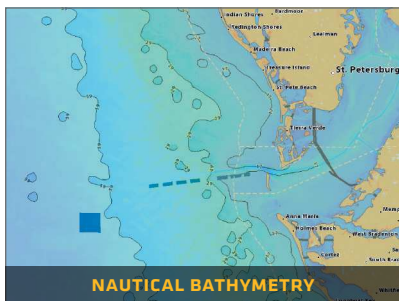
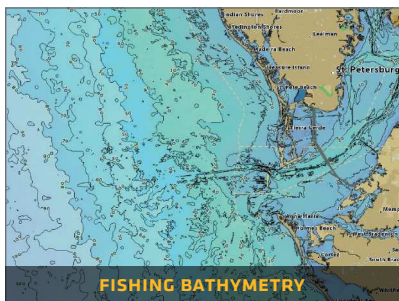


➤ CHANGE CONTOUR SOURCE

Customize the contour sources displayed on the chart with Fishing and Nautical Bathymetry. If you have a CoastMaster Premium chart card, you can also display Auxiliary Bathymetry [available in select regions only].

APEX/SOLIX: Chart X-Press Menu > Chart Options > Depths/Contours > Depth/Contour Source

HELIX: Main Menu > HB Chart tab > Depth/Contours > Depth/Contour Source



TROUBLESHOOTING

➤ **The map is not displayed in Chart View.**

1. Confirm GPS reception.
2. Confirm the control head software is up to date.
3. Confirm compatibility on our Web site at humminbird.com.

➤ **How can I view maps on my control head when I am not on the water?**

1. Power on the control head. Select Start Simulation [APEX/SOLIX] or Simulator [HELIX]. Open a chart view and move the cursor to your desired position on the chart.

APEX/SOLIX: Chart X-Press Menu > Set Simulation Position

HELIX: Main Menu > Chart Menu Tab > Set Simulation Position

➤ **Can I view the Humminbird CoastMaster chart card on my computer?**

No, the Humminbird CoastMaster chart card is not compatible with your computer. It is only compatible with your Humminbird control head. Installing the Humminbird CoastMaster chart card in a computer could corrupt the map files.

➤ **The map displays, but seems to redraw slowly as you move across the water.**

1. Press the ZOOM [-] key to zoom out of the Chart View.
2. Confirm the control head software is up to date.

➤ **For additional questions, see the FAQ page at humminbird.com or contact Humminbird Technical Support through our Help Center at <https://humminbird-help.johnsonoutdoors.com/hc/en-us>.**

WARRANTY

➤ END USER LICENSE AGREEMENT

This Hydrographic Database is the proprietary and confidential property of Johnson Outdoors Marine Electronics. Unauthorized use, including the copying of this Hydrographic Database, is expressly prohibited. BY USING THE PRODUCT YOU ARE AGREEING TO BE BOUND BY ALL THE TERMS AND CONDITIONS OF THE JOHNSON OUTDOORS ["LICENSOR"] LICENSE AGREEMENT ["AGREEMENT"] WHICH IS PROVIDED WITH THIS COASTMASTER DIGITAL MAP PRODUCT ["LICENSED PRODUCT"] INCLUDING, WITHOUT LIMITATION, THE USE RESTRICTIONS, WARRANTY DISCLAIMER AND LIMITATIONS OF LIABILITY SET FORTH HEREIN. Under the Agreement, you have a limited, non-exclusive, personal license to use the data contained on the media in this package, on a GPS mapping device for supplemental navigation reference purposes. Licensor and its third-party suppliers retain all rights to the Licensed Product not expressly granted by the Agreement. You are responsible for using official government charts and prudent navigation for safe travel. The Licensed Product and the accompanying documentation are copyrighted works of authorship and contain valuable secret and confidential information proprietary to Licensor and its third-party suppliers who retain the ownership of the information and all copyrights and other proprietary rights therein. You agree to exercise reasonable efforts to protect their proprietary interests. You may NOT modify, adapt, translate, reverse engineer, decompile, disassemble, sub license, rent, lease, or sell any portion of the Data. You may NOT create derivative works based upon the Data. You may NOT place the Data onto a server so that it is accessible via a public network such as the Internet.

LICENSOR AND ITS THIRD-PARTY SUPPLIERS DO NOT WARRANT THE LICENSED PRODUCT WILL MEET YOUR REQUIREMENTS OR THAT ITS OPERATION WILL BE UNINTERRUPTED OR ERROR-FREE. IN NO EVENT WILL COASTMASTER OR ITS SUPPLIERS BE LIABLE TO YOU FOR ANY CONSEQUENTIAL OR INCIDENTAL DAMAGES. Some states or jurisdictions do not allow the exclusion or limitation of consequential or incidental damages, so the above limitations may not apply to you.

➤ PRODUCT WARRANTY & RETURN POLICY

Johnson Outdoors warrants this product against defects in material and workmanship for 30 days from the date of purchase. Defects in materials or workmanship that occur within 30 days of purchase, substantiated by a sales receipt, will either be repaired or replaced without charge at Johnson Outdoors' discretion. THIS REPAIR OR REPLACEMENT IS THE EXCLUSIVE REMEDY AVAILABLE FOR ANY DEFECT CONCERNING THE PRODUCT OR FOR ANY LOSS OR DAMAGE RESULTING FROM ANY OTHER CAUSE WHATSOEVER. JOHNSON OUTDOORS WILL NOT UNDER ANY CIRCUMSTANCES BE LIABLE TO ANYONE FOR ANY SPECIAL, CONSEQUENTIAL, INCIDENTAL OR OTHER INDIRECT DAMAGES OF ANY KIND.

This warranty does not apply when: 1. the product has been altered, adjusted or handled in a manner other than in accordance with the instructions furnished with this product: 2. any defect, problem, loss or damage has resulted from any misuse, negligence or carelessness.

➤ RETURN OF DEFECTIVE PRODUCT

Do not return this product to any retailer. You must return this product directly to Johnson Outdoors. Returned products must have a Return Authorization [RA] number clearly displayed on the outside of the shipping package. Contact Humminbird Technical Support through our Help Center at <https://humminbird-help.johnsonoutdoors.com/hc/en-us> within 30 days of purchase to obtain the RA. When you return the product, include a valid sales receipt, product UPC, a return address and phone or email contact information. The RA is valid for 30 days from date issued. Product should be returned to: **Humminbird Service Department, 678 Humminbird Lane, Eufaula, AL 36027 USA**

Johnson Outdoors reserves the right to examine the product when we receive it to determine if the defect or malfunction is due to a defect in materials or workmanship. Johnson Outdoors will duplicate the original data on all repaired or replaced products. Products that are defective due to any other cause will not be repaired or replaced. Damaged products, not covered by or that are out of warranty may be eligible for repair for a service fee, contact Johnson Outdoors for more information. **WARNING:** Never format a CoastMaster SD card. Formatting the card will permanently erase the map data. Never use a CoastMaster SD card to store or transfer data as this may damage the card.

WARNINGS



WARNING! The electronic chart in your Humminbird unit is an aid to navigation designed to facilitate the use of authorized government charts, not to replace them. Only official government charts and notices to mariners contain all of the current information needed for the safety of navigation, and the captain is responsible for their prudent use.



WARNING! Do NOT save data files (waypoints, routes, tracks, groups, recordings, etc.) to your chart card. Saving data to your chart card will permanently damage it. You can save navigation data to the control head and export it to a blank card. Download the CoastMaster Chart Cards User Guide from our Web site at **humminbird.com** for more details.



WARNING! Do NOT delete or change the contents of your chart card. Changing the card will permanently damage it.



NOTE: To purchase accessories for your control head, visit our Web site at **humminbird.com** or contact Humminbird Technical Support through our Help Center at <https://humminbird-help.johnsonoutdoors.com/hc/en-us>.

APEX™, CoastMaster®, HELIX®, Humminbird®, and SOLIX® are trademarked by or registered trademarks of Johnson Outdoors Marine Electronics, Inc.

Adobe, Acrobat, Adobe PDF, and Reader are either registered trademarks or trademarks of Adobe Systems Incorporated in the United States and/or other countries.

microSD is a trademark or registered trademark of SD-3C, LLC in the United States, other countries or both.

CONTACT HUMMINBIRD

Contact Humminbird Technical Support through our Help Center at <https://humminbird-help.johnsonoutdoors.com/hc/en-us> or by writing to the address below:

Humminbird Service Department
678 Humminbird Lane
Eufaula AL 36027 USA

Social Media Resources:



Facebook.com/HumminbirdElectronics



Twitter.com [@humminbirdfish]



Instagram.com/humminbirdfishing



YouTube.com/humminbirdtv

