

ICOM

INSTRUCTIONS

VHF MOBILE TRANSCEIVER

IC-F5062

IC-F5062D

UHF MOBILE TRANSCEIVER

IC-F6062

Thank you for choosing this Icom product.  
**READ ALL INSTRUCTIONS** carefully and completely before using this product.

**SAVE THESE INSTRUCTIONS** — These instructions contain important operating instructions for the IC-F5062, IC-F5062D, and the IC-F6062.

See the operating guide for details of the MDC, LTR®, and IDAS™ and the BIIS (Binary Interchange of Information and Signaling) 1200 system operations. Ask your dealer for details.

Icom is not responsible for the destruction, damage to, or performance of any Icom or non-Icom equipment, if the malfunction is because of:

- Force majeure, including, but not limited to, fires, earthquakes, storms, floods, lightning, other natural disasters, disturbances, riots, war, or radioactive contamination.
- The use of Icom transceivers with any equipment that is not manufactured or approved by Icom.

Icom, Icom Inc. and the Icom logo are registered trademarks of Icom Incorporated (Japan) in Japan, the United States, the United Kingdom, Germany, France, Spain, Russia, Australia, New Zealand, and/or other countries.

AMBE+2 is a trademark and property of Digital Voice Systems Inc.

LTR is a registered trademark of the E.F.Johnson Company.

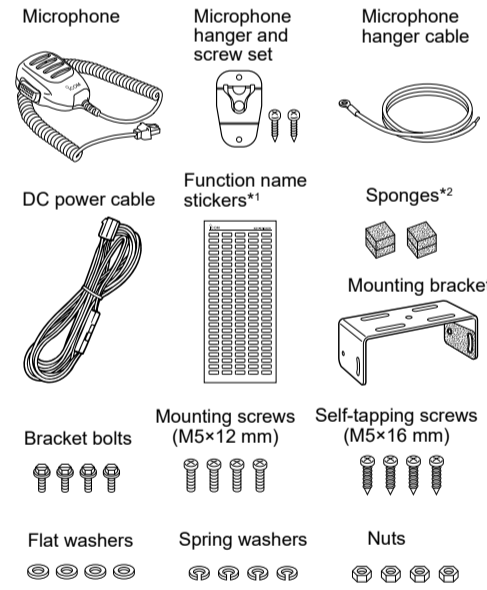
All other products or brands are registered trademarks or trademarks of their respective holders.

Icom Inc.

1-1-32 Kamiminami, Hirano-ku,  
Osaka 547-0003, Japan  
Jan. 2022

A6566W-8EU-2  
Printed in Japan  
© 2019–2022 Icom Inc.

SUPPLIED ACCESSORIES



\*1 Used for labelling the programmable function keys according to their assinged functions.

\*2 Used for optional unit installation.  
Ask your dealer for details.

**NOTE:** Some accessories are not supplied, or the shape is different, depending on the transceiver version.

EXPLICIT DEFINITIONS

WORD	DEFINITION
<b>⚠ WARNING!</b>	Personal injury, fire hazard or electric shock may occur.
<b>CAUTION</b>	Equipment damage may occur.
<b>NOTE</b>	If disregarded, inconvenience only. No risk of personal injury, fire or electric shock.

ANTENNA

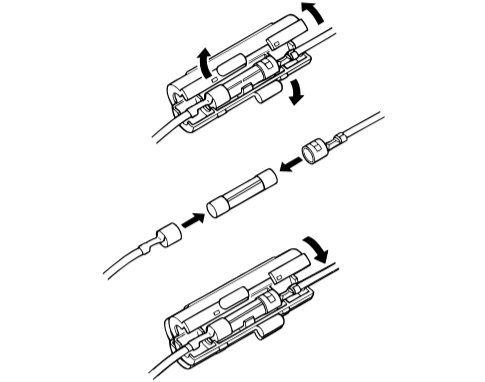
A key element in the performance of any communication systems is the antenna. Contact your dealer for information regarding antennas and how to install them.

FUSE REPLACEMENT

A fuse is installed in the supplied DC power cable. If a fuse blows, track down the source of the problem, repair it, and then replace the damaged fuse with a new rated one.

ⓘ Fuse rating: 250 V 10 A

**NOTE:** Use only a 10 A fuse.



Fuse rating explanation

Fuse coding: FUSE 250 V 10 A  
Fuse voltage rating: 250 Volts  
Fuse current rating: 10 Amperes

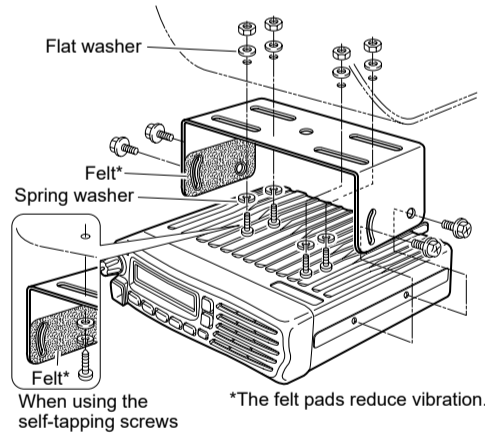
CLEANING

If the transceiver becomes dusty or dirty, wipe it clean with a soft, dry cloth.

MOUNTING THE TRANSCEIVER

The universal mounting bracket supplied with your transceiver allows under or overhead mounting.

- Mount the transceiver securely with the 4 supplied screws to a thick surface that can support more than 1.5 kg.



\*The felt pads reduce vibration.

PRECAUTIONS

⚠ **WARNING! NEVER** connect the transceiver to an AC outlet. This may pose a fire hazard or result in an electric shock.

⚠ **WARNING! NEVER** operate the transceiver during a lightning storm. It may result in an electric shock, cause a fire or damage the transceiver. Always disconnect the power source and antenna before a storm.

⚠ **WARNING! NEVER** connect the transceiver to a power source of more than 16 V DC such as a 24 V battery. This could damage the transceiver.

⚠ **WARNING! NEVER** cut the DC power cable between the DC plug and fuse holder. If an incorrect connection is made after cutting, the transceiver might be damaged.

⚠ **WARNING! NEVER** place the transceiver where normal operation of the vehicle may be hindered or where it could cause bodily injury.

**CAUTION: DO NOT** expose the transceiver to rain, snow or any liquids.

**CAUTION: DO NOT** use the non-specified microphone. Other microphones have different pin assignments and may damage the radio.

**CAUTION: DO NOT** place or leave the transceiver in areas with temperatures below –25°C or above +55°C, or in areas subject to direct sunlight, such as the dashboard.

**CAUTION: DO NOT** operate the transceiver without running the vehicle's engine. The vehicle's battery will quickly run out when the transceiver transmits while the vehicle's engine is OFF.

**CAUTION: DO NOT** place or leave the transceiver in excessively dusty environments.

**CAUTION: DO NOT** place the transceiver against walls or put anything on top of the transceiver. Otherwise heat dissipation will be obstructed.

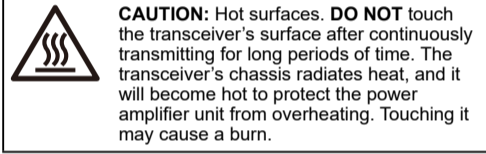
**CAUTION: DO NOT** use harsh solvents such as Benzine or alcohol when cleaning, as they damage the transceiver's surfaces.

**CAUTION: CONFIRM** that all connectors and jacks are dry and clean before attachment. Exposing them to dust or water will result in serious damage to the transceiver.

**CAUTION: DO NOT** operate the transceiver if it becomes hot after operating it continuously for long periods of time. This may damage the transceiver.

**NEVER** place the transceiver in an insecure place to avoid inadvertent use by unauthorized persons.

For European versions



OPTIONS

- **RMK-3** SEPARATION KIT + **OPC-609** SEPARATION CABLE  
Allows you to install the transceiver main unit separately from the front panel for operating convenience.
- **HM-152/HM-152T/HM-148G/HM-148T** HAND MICROPHONES  
HM-152: Hand microphone  
HM-152T: DTMF microphone  
HM-148G: Self grounding heavy duty microphone  
HM-148T: Self grounding heavy duty microphone with 10-keypad  
The 10-keypad of this microphone can be used for the DTMF code transmission only.
- **SM-26** DESKTOP MICROPHONE
- **SP-30/SP-35/SP-35L** EXTERNAL SPEAKERS  
Input impedance: 4 Ω  
SP-35/SP-35L: Rated input 5 W, Maximum input 7 W  
SP-30: Rated input 20 W, Maximum input 30 W
- **UT-126H** DIGITAL MODULATOR/DEMODULATOR UNIT  
Enables 6.25 kHz digital mode operation.  
Which unit to use depends on your transceiver version.  
Ask your dealer for details.

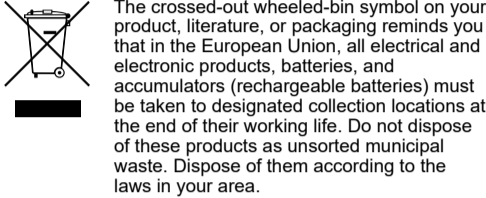
Some options may not be available in some countries.  
Please ask your dealer for details.

ABOUT CE AND DOC

CE Hereby, Icom Inc. declares that the versions of IC-F5062, IC-F5062D, and IC-F6062 which have the "CE" symbol on the product, comply with the essential requirements of the Radio Equipment Directive, 2014/53/EU, and the restriction of the use of certain hazardous substances in electrical and electronic equipment Directive, 2011/65/EU. The full text of the EU declaration of conformity is available at the following internet address: <https://www.icomjapan.com/support/>

**About e-marking:** Detailed installation notes for Icom mobile transceivers to be fitted into vehicles are available.  
Please contact your Icom dealer or distributor.

DISPOSAL



FREQUENCY RANGE AND OUTPUT POWER

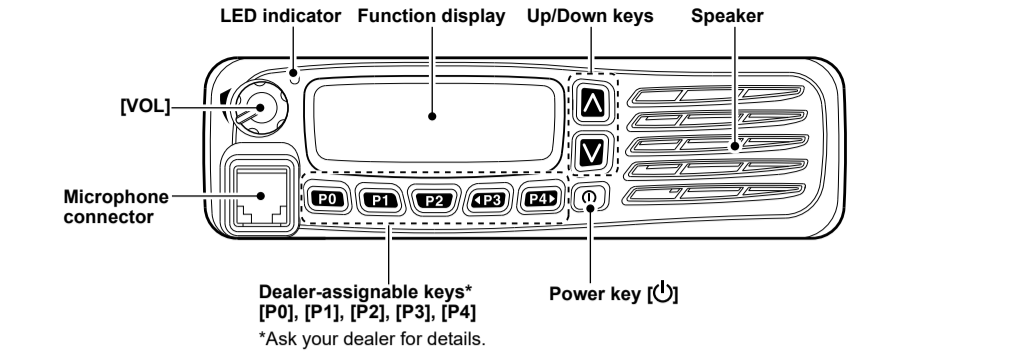
Model	Frequency Range	Output Power
VHF Mobile Transceiver IC-F5062/IC-F5062D	136 – 174 MHz	25 W
UHF Mobile Transceiver IC-F6062	400 – 470 MHz	25 W

• Channel spacing: 6.25 kHz\*, 12.5 kHz, 20 kHz, 25 kHz  
\* Only Digital mode

VOICE CODING TECHNOLOGY

The AMBE+2™ voice coding Technology embodied in this product is protected by intellectual property rights including patent rights, copyrights and trade secrets of Digital Voice Systems, Inc. This voice coding Technology is licensed solely for use within this Communications Equipment. The user of this Technology is explicitly prohibited from attempting to extract, remove, decompile, reverse engineer, or disassemble the Object Code, or in any other way convert the Object Code into a human-readable form. U.S. Patent Nos. #8,595,002, #8,359,197, #8,315,860, #8,200,497, #7,970,606, #6,912,495 B2.

PANEL DESCRIPTION



◇ About the LED indicator

- Lights red while transmitting.
- Lights green while receiving a signal, or when the squelch is open.

◇ About the Microphone connector

Connect the supplied or optional microphone.

**NEVER** connect non-specified microphones. The pin assignments may be different and may damage the transceiver.

BASIC OPERATION

◇ Turning power ON

- Hold down [P] to turn ON the power.

**NOTE:** If the transceiver is programmed for a start up password, input the digit codes as directed by your dealer. See the operating guide for details.

◇ Receiving and Transmitting

Receiving:

1. Select a channel.
  - Push [CH Up] or [CH Down].
  - Push one of the direct channel select keys, [MR-CH 1] to [MR-CH 4].
2. When receiving a call, rotate [VOL] to adjust the audio output level to a comfortable listening level.

Transmitting:

Wait until the channel is clear to avoid interference.

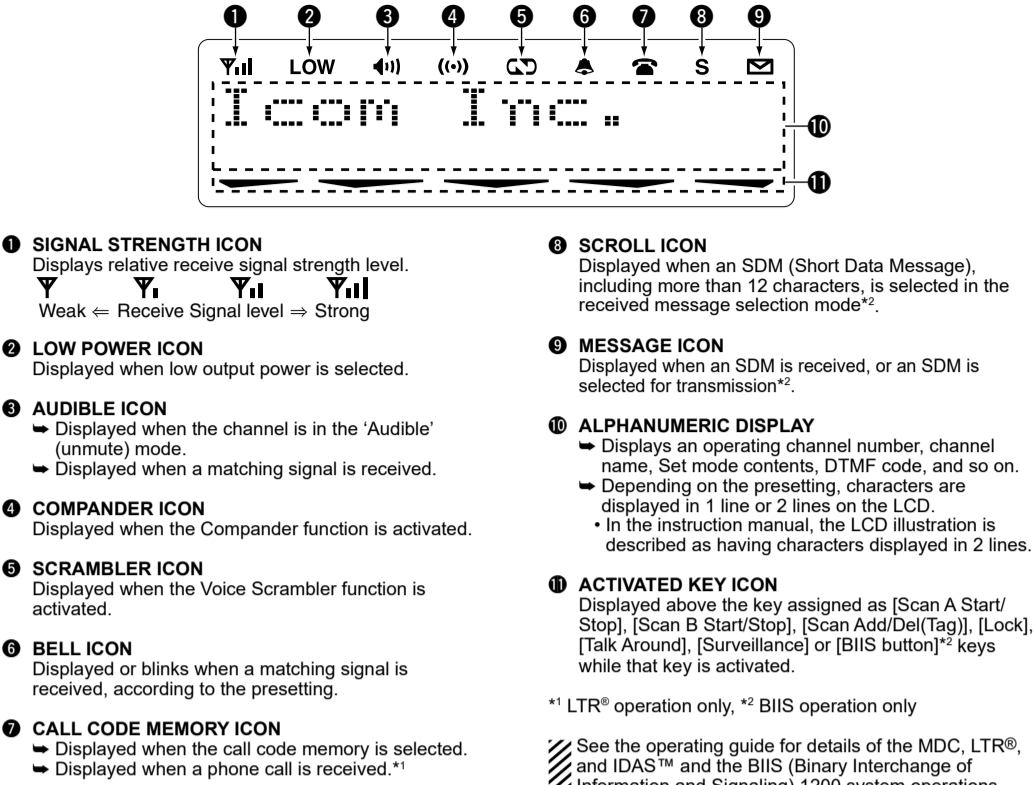
1. Take the microphone off the hook.
  - While scanning, the scan stops.
2. Wait for the channel to become clear.
  - The channel is busy when the LED indicator lights green.
3. While holding down [PTT], speak at a normal voice level.
4. Release [PTT] to receive.

IMPORTANT:

To maximize the readability of your signal:

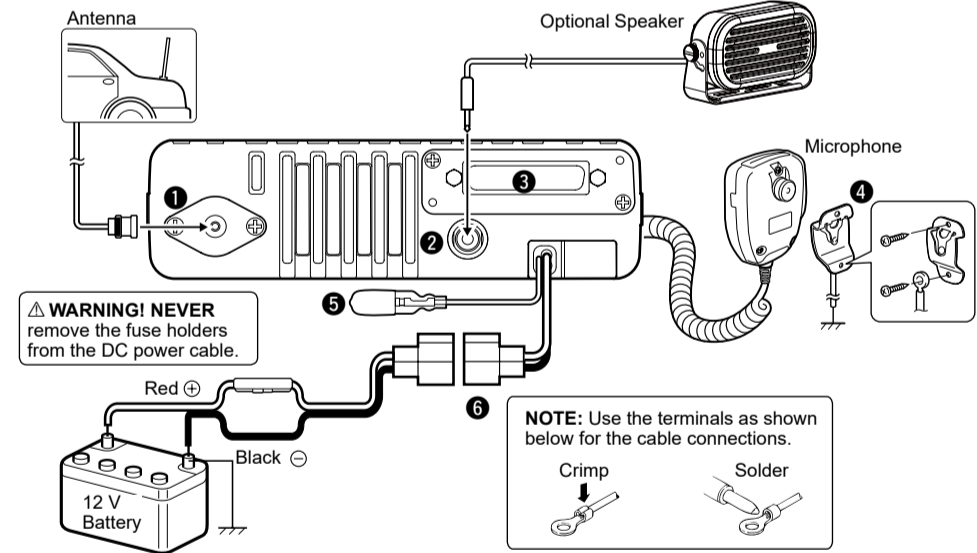
1. After pushing [PTT], pause briefly before you start speaking.
2. Hold the microphone 5 to 10 cm (2 to 4 inches) from your mouth, then speak at a normal voice level.

FUNCTION DISPLAY



REAR PANEL CONNECTION

◇ For mobile operation



**1 ANTENNA CONNECTOR**  
Connect to an antenna. Contact your dealer about antenna selection and placement.

**2 EXTERNAL SPEAKER JACK**  
Connect a 4 ~ 8 Ω external speaker.

**3 D-Sub 25-pin**  
Connects to an external unit.

**4 MICROPHONE HANGER**  
Connect the supplied microphone hanger to the vehicle's ground for microphone ON/OFF hook functions. (See 'PANEL DESCRIPTION' for details.)

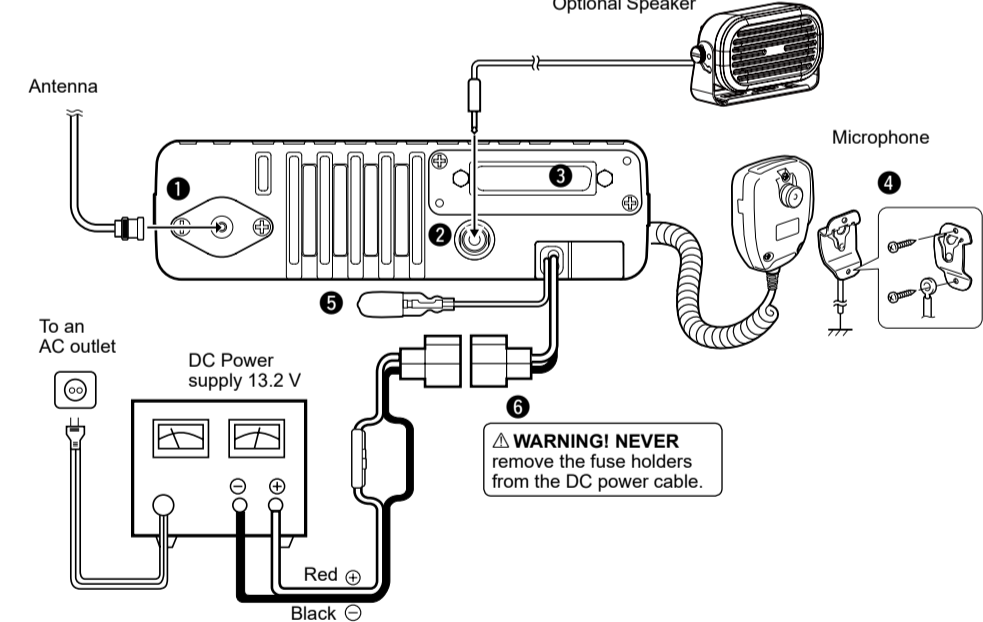
**5 IGNITION LEAD**  
Connects to an ignition line.

**CAUTION: DO NOT** put a pressure on this lead. Binding to the DC power cable is recommended.

**6 DC POWER RECEPTACLE**  
Connects to a 12 V DC battery. Pay attention to polarities.

**WARNING! NEVER** connect to a 24 V battery. This will damage the transceiver.

◇ For base station operation



**1 ANTENNA CONNECTOR**

**2 EXTERNAL SPEAKER JACK**  
Connect a 4 ~ 8 Ω external speaker.

**3 D-Sub 25-pin**  
Connects to an external unit.

**4 MICROPHONE HANGER**  
Connect the supplied microphone hanger to the ground for microphone ON/OFF hook functions. (See 'PANEL DESCRIPTION' for details.)

**5 IGNITION LEAD**

**6 DC POWER RECEPTACLE**  
Connects to a 13.2 V DC power supply. Pay attention to polarities. Make sure the ground terminal of the DC power supply is grounded.