



L6 Nex ROBOT VACUUM CLEANER APP QUICK START GUIDE



If you have any problem of this device,
please feel free to contact us:
support09@laresar.us



APP Connection

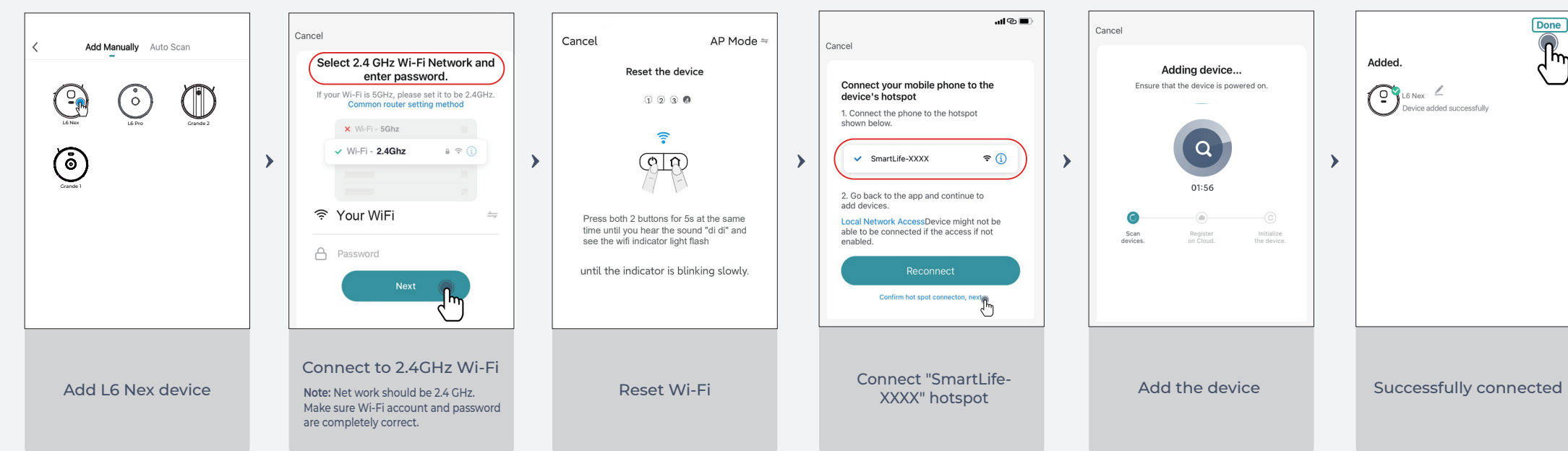


APP Download

Scan the QR code below or search the APP named "Laresmart" in Google play or APP store.

- Compatible with iOS 10.0 and higher.
- Compatible with Android 8.0 and higher.

Note: The router, mobile phone, and robot vacuum cleaner should be as close as possible to ensure smooth connection.



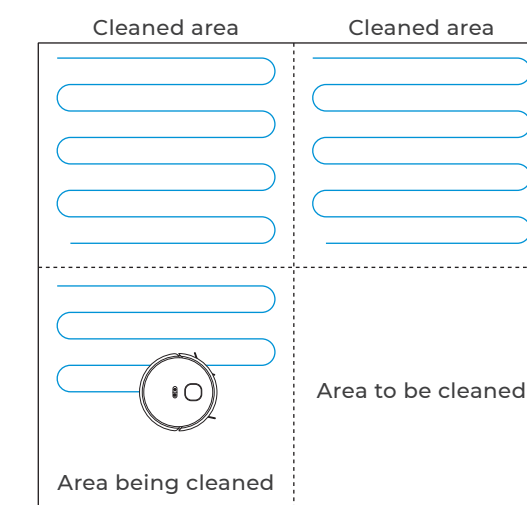
L6 Nex ROBOT VACUUM CLEANER APP QUICK START GUIDE

App Function Introduction

1 APP Main Interface Introduction



2 Intelligent Cleaning (Default Mode)

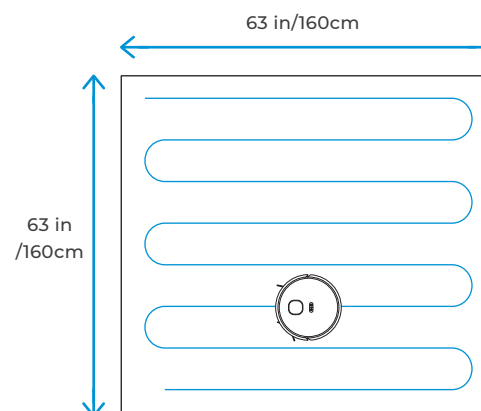


The robot vacuum cleaner scans the working environment, generates a map and intelligently divides the areas. It will complete cleaning of each area one by one by filling along the Z shape behind the wall. After finishing cleaning, the robot vacuum cleaner will return to the charging base for charging.

Note:
In order to better build the map, the robot needs to start from the charging base at the first cleaning.

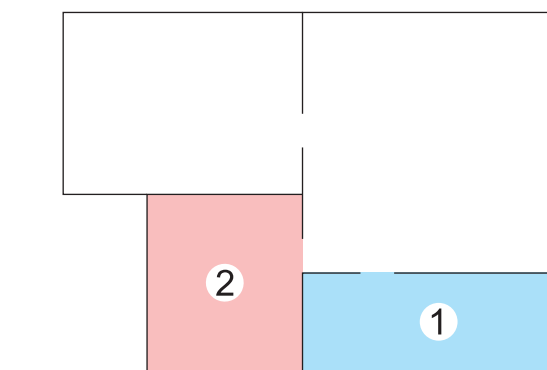
Note: Before using this function, complete building of the map for the first cleaning in the Laresmart APP.

3 Cleaning as Required



Use the Laresmart APP to select the function of cleaning as required; select a point on the map and the robot vacuum cleaner will move to the designed position and clean a 1.6m X 1.6m square area with itself as the center.

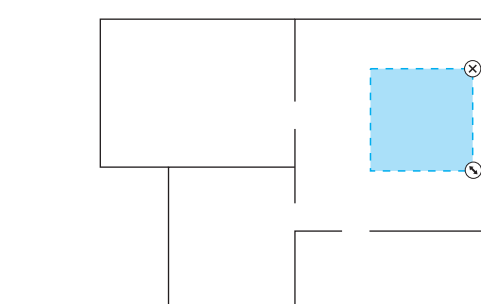
4 Cleaning of Selected Area



Use the Laresmart APP to select the function of cleaning of the selected area; select the area to be cleaned on the map, and the robot vacuum cleaner will clean the selected area.

Note: The main unit might enter the unplanned area, so please clear the obstacles on the ground around the planned area, and this area cannot play a role of safety isolation.

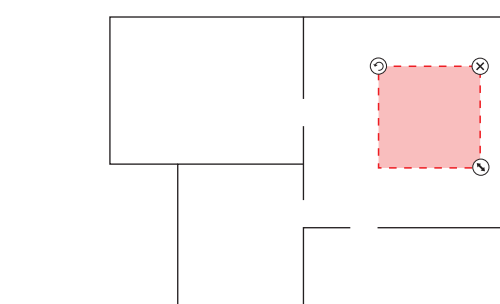
5 Cleaning of Defined Area



Use the Laresmart APP to select the function of cleaning of the defined area; select the area to be cleaned on the map, and the robot vacuum cleaner will clean the defined area.

Note: The main unit might enter the unplanned area, so please clear the obstacles on the ground around the planned area, and this area cannot play a role in safety isolation.

6 Restricted Area Setting



Use the Laresmart APP to select the restricted area editing function; select and set the restricted area of cleaning on the map, and the machine will not enter the set area to clean.

Note:
1. This function is only used to define the cleaning areas and cannot be used to block dangerous areas.
2. When moving the robot vacuum cleaner or there are obvious changes in your home environment, the map might become ineffective and the restricted area might be lost.

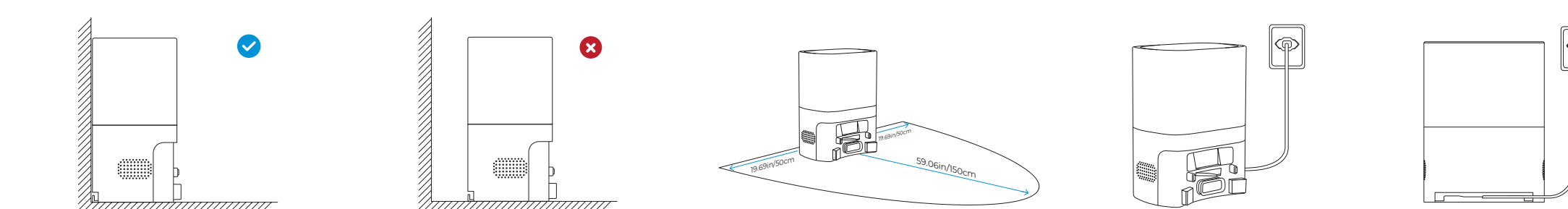


L6 Nex ROBOT VACUUM CLEANER APP QUICK START GUIDE

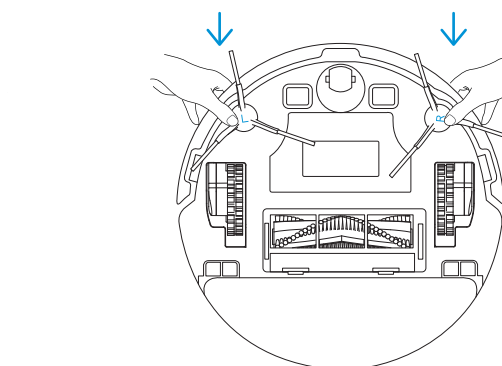
How to Use Your L6 Nex

1 Place Charging Dock and Power It

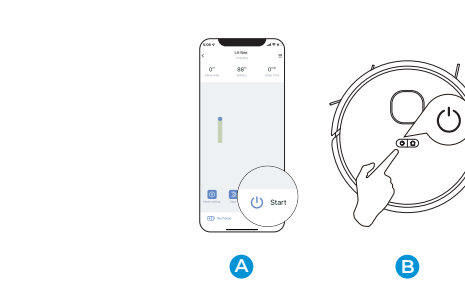
Note: Place the remaining wire into the trunking at the back of the Charging Dock.



2 Install the Side Brushes

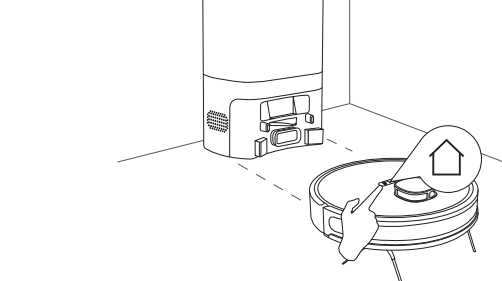


3 Start Cleaning



Press the power button on the machine or app control to start cleaning.

4 Recharge Method



- A Automatically recharge after cleaning
- B Automatically recharge when battery power $\leq 15\%$
- C Manually recharge at any time

5 Attention

