



E-BIKE **EB1**

USER MANUAL

Before using the product, please read this manual. Read carefully and keep for future reference.

Illustrations of product, accessories, and user interface in the user manual are for reference purposes only. Actual product and functions may vary due to product enhancements.



Table of Contents



PRODUCT OVERVIEW	02
PACKAGE CONTENTS	03
ASSEMBLY	04
DISPLAY & BUTTONS	10
SETTINGS	12
SPECIFICATIONS & ERROR CODES	13

Reading and Storing the User Manual

The user manual contains important information about the assembly and use of the e-bike.

Read the entire user manual carefully and pay particular attention to the safety notice before using the e-bike. Failure to follow this manual may result in serious injury or damage to the e-bike. If you transfer ownership of the e-bike to someone else, it is crucial to include this manual with the e-bike.



PRODUCT SAFETY NOTICE



Always wear a helmet when riding your e-bike.



Ensure the e-bike's battery is fully charged before every ride.



Always familiarize yourself with local road laws and strictly adhere to them.



Do not ride the e-bike under the influence of drugs or alcohol.



Always respect pedestrians.



Do not operate the e-bike under wet conditions, as this may lead to loss of control and injury. Wet environments may also damage the e-bike's electronics and void the warranty.

PRODUCT OVERVIEW



- 1 Brake Lever
- 2 Display
- 3 Front Reflector
- 4 Brake Lever
- 5 Bell



- 1 Handlebar Height Adjustment Clamp
- 2 Folding Mechanism
- 3 Headlight
- 4 Front Fender
- 5 Front Disc Brake
- 6 Saddle
- 7 Rear Reflector
- 8 Seatpost Clamp
- 9 Charging Port
- 10 Taillight & Brake Light
- 11 Rear Shock
- 12 Rear Fender
- 13 Rear Disc Brake
- 14 Kickstand
- 15 Pedal

PACKAGE CONTENTS

If any parts are missing or damaged, please contact us.



E-bike Frame x1



Front Wheel x1



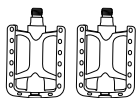
Seat x1



Front Fender x1



Front Wheel Axle x1



Left Pedal x1
Right Pedal x1



Charger x1

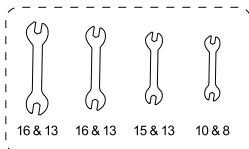


User Manual x1



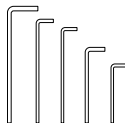
Safety Instructions x1

Toolkit Contents:

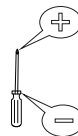


16 & 13 16 & 13 15 & 13 10 & 8

Double Open-Ended Wrench x4



Hex Wrench x5



2-in-1 Screwdriver x1
(Cross & Flat Heads)

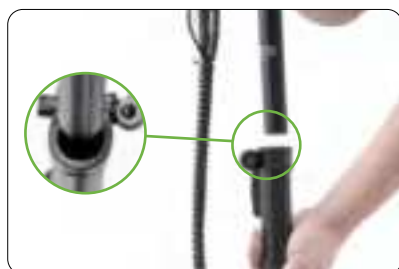
ASSEMBLY

STEP 1: Install the Handlebar

1. Unfold the handlepost until you hear a click from the folding mechanism.



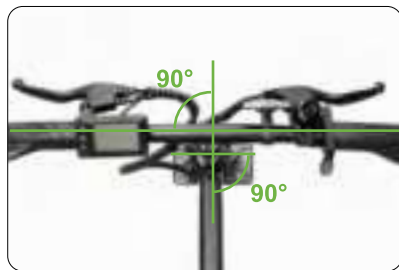
2. Open the lever of the handlebar height adjustment clamp, then insert the T handlebar into the handlepost.



3. Adjust the handlebar to your desired height, then fully close the lever of the handlebar clamp.



4. Adjust the handlebar and front fork so that they are both perpendicular to the bike frame.



WARNING: The handlebar must be installed with its minimum insertion mark invisible.

ASSEMBLY

5. Slide open the lever of the folding mechanism, fold down the handlepost, and tighten the retaining bolt.



Note: Keep the handlepost and front fork still during the entire process.

6. Unfold the handlepost until you hear a click from the folding mechanism, then fully close the folding lever.



WARNING: The handlebar clamp, handlepost folding lever, and handlepost retaining bolt must be secured tightly for your safety.

STEP 2: Install the Headlight & Front Fender

1. Remove the pre-installed bolt from the mounting hole of the headlight and front fender.



2. Pass that bolt through the holes of the headlight bracket, front fender bracket, and front fork in sequence.



ASSEMBLY

3. Retighten the bolt or nut.



Note: Adjust the headlight and front fender to your desired angles before fully tightening the bolt or nut.

4. Remove the pre-installed fender stay bolts.



5. Attach the fender stay on the fork blades, then retighten the bolts.



ASSEMBLY

STEP 3: Install the Front Wheel

1. Remove the front fork dropout protector after loosening its nuts.



TIP: The dropout protector protects the fork from damage during transit, so keep it for future use.

3. Sit the front fork dropouts onto the wheel axle, then reattach the washers as shown.



NOTE: Ensure the axle is seated properly in the dropouts and the safety washers catch the holes above the fork dropouts.

2. Remove the nuts, washers, and bushings from the wheel axle, then pass the axle through the wheel hub.



NOTE: The narrow bushing should be located on the disc brake rotor side.

4. Re-tighten the acorn nuts securely.



NOTE: Ensure the brake rotor is centered between the brake pads.

ASSEMBLY

STEP 4: Install the Seat

1. Open the lever of the quick-release seatpost clamp.



2. Insert the seatpost into the seat tube, adjust the seat to your desired angle and height, then close the lever.



3. Adjust the seat to your desired height and angle, then close the lever of the seatpost clamp.



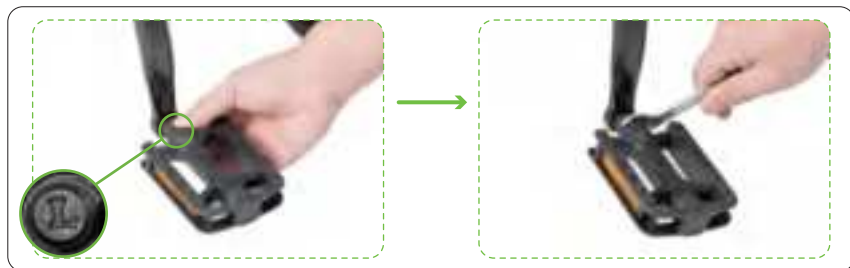
WARNING:

- The part below the minimum insertion mark (including the mark) must be fully inserted into the seat tube.
- The seatpost must be tightened firmly by the clamp for your riding safety.

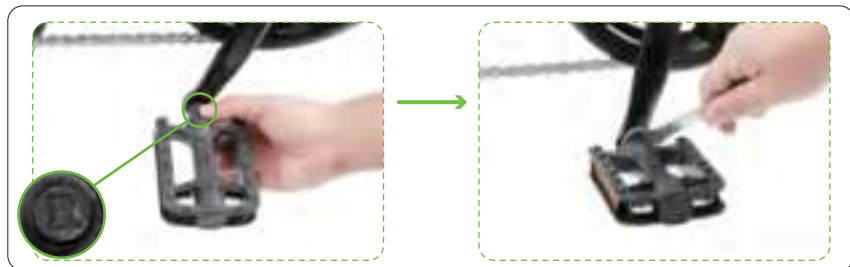
ASSEMBLY

Step 5: Install the Pedals

1. Rotate the axle of the left pedal counterclockwise onto the left crank arm, then tighten it.

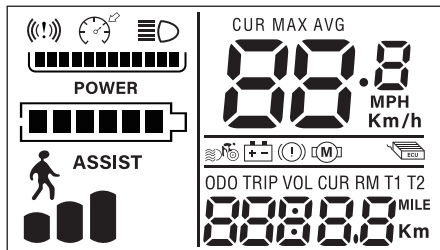


2. Rotate the axle of the right pedal clockwise onto the right crank arm, then tighten it.



DISPLAY & BUTTONS

Display



	Cruise Control		Speed Level
	Headlight		Real-Time Speed
	Battery Level		Brake Applied
	Walk Assist Mode (ONLY works when the pedal assist level or speed level is not 0)		ODO : Total Distance TRIP : Trip Distance VOL : Battery Voltage CUR : Battery Current T1 : Display Single Running Time

DISPLAY & BUTTONS

Buttons



“+” Button :

- Press to switch the speed level (lower to higher top speed).
- Long press to turn on/off the headlight and taillight.






Power Button:

- Press to switch between ODO, TRIP, VOL, CUR and T1.
- Long press for 2 seconds to turn on/off the e-bike.



“-” Button :

- Press to switch the speed level (higher to lower top speed).
- Long press to activate walk assist mode (release to exit).

Speed Level	Top Speed
ASSIST	NO Motor Output (after each restart)
ASSIST 	10 km/h
ASSIST 	15 km/h
ASSIST 	25 km/h

SETTINGS






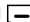
There are four setting items in the settings.

P01: System of units (00000 means metric and 00001 means imperial)

P02: Cruise control (00000 means off and 00001 means on)

P03: Screen brightness (00001 means the darkest, 00002 means standard brightness, and 00003 means the brightest)

P04: Odometer resetting (long press  to reset the odometer when selecting P04)

1. Long press  and  simultaneously to enter the settings.
2. Press the M button to cycle through P01, P02, P03, and P04.
3. Press  or  to change its setting when selecting P01, P02, or P03.
4. Press the M button to switch to the next setting item (the parameter of the current setting item will be saved).
5. Long press  and  simultaneously to save all the changed parameters and return to the home screen.

Note:

When there is no operation for 8 seconds in the settings, the display will automatically return to the home screen and all the parameters (if changed) will be saved.

SPECIFICATIONS & ERROR CODES

E-bike Weight	48.5 lbs (22 kg)
E-bike Size	47.2 x 21.3 x 40.6 inch (1200 x 540 x 1030 mm)
Tire Diameter	14"
Range	18.6-24.9 miles (30-40 km)
Motor Power	250 W (Nominal), 500 W (Peak)
Brake Type	Disc Brake (Front & Rear)
Max Load Capacity	330 lbs (150 kg)
Battery Capacity	36 V, 7.8 Ah
Charger Input	AC 100~240 V, 50/60 Hz, 2 A
Charger Output	DC 42 V, 1.5 A
Charging Time	4~5 h
Operating Temperature	-4°F ~ 140°F (-20°C ~ 60°C)
Storage Temperature	68°F ~ 77°F (20°C ~ 25°C)
Warranty	1 Year Limited

If you see any error code listed below on the screen, contact us for support.

E001	Controller Fault
E002	Communication Fault
E003	Hall Sensor Fault
E005	Brake Lever Fault
E006	Motor Phase Loss Fault