

WELLPOINT

.cloud

People Counter • Real-time
Privacy-first • High accuracy
GDPR-compliant • TOF laser

WELLPOINT People Counter
Primer V2.0
installation manual - V2411



1. **Unbox the Package**, Inside, you'll find:
 - The Wellpoint People Counter device
 - Power source
 - Two double-sided adhesive strips
 - A QR code linking to the user manual
2. **Connect the Power:**
 - Attach the DC cable from the Wellpoint People Counter to the DC power cable (simply plug them together).
3. **Power On:**
 - Plug the power source into a wall outlet. Within three seconds, you should hear three beeps and see three flashes from the device's LED.
4. **Access the Web Platform:**
 - Visit wellpoint.cloud and log in using the credentials sent via email.

5. **Device Settings:**

- Click on the "Device Settings" menu. Here, you'll see the devices associated with your account.



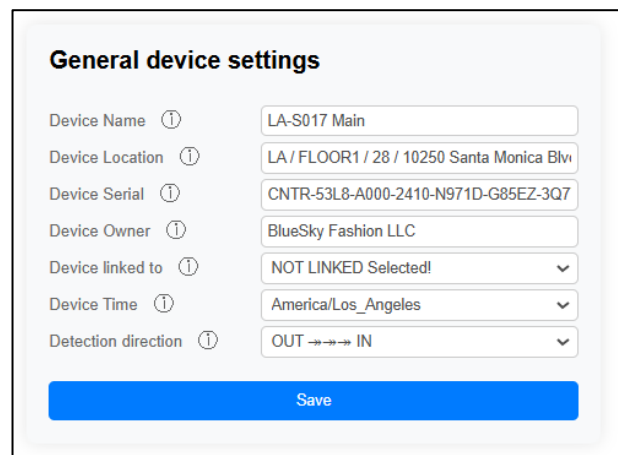
6. **Select the Device:**

- Press the green button next to the device you want to configure.
- To confirm the correct device, identify it by the code located on the back or cable of the Wellpoint People Counter.



7. **Configure General Device Settings:**

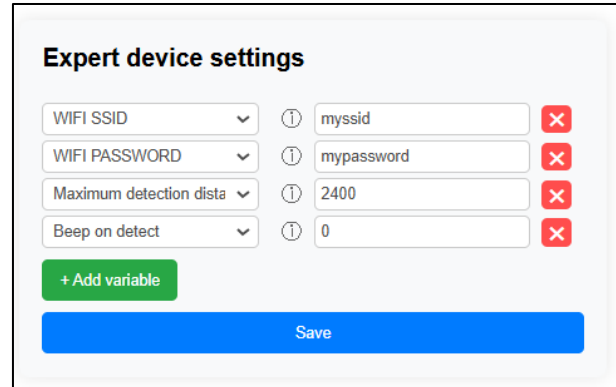
- **Device Name:** Enter a short name that includes the store code and other relevant info (e.g., specific exit or aisle location), e.g., "LA-S017 Main."
- **Device Location:** Input the physical location of the device, e.g., "LA / FLOOR1 / 28 / 10250 Santa Monica Blvd, Los Angeles, CA 90067, USA."
- **Device Linked To:** If you use more than one device for an entrance, select the master device from the list. Otherwise, leave it as "Not Linked."
- **Device Time:** Set the timezone carefully to ensure accurate visitor counting.
- **Detection Direction:** Choose either "OUT -> IN" or "IN <- OUT" to ensure accurate counting.

A screenshot of the "General device settings" form. It contains several input fields and dropdown menus. The fields are: Device Name (LA-S017 Main), Device Location (LA / FLOOR1 / 28 / 10250 Santa Monica Blvd), Device Serial (CNTR-53L8-A000-2410-N971D-G85EZ-3Q7), Device Owner (BlueSky Fashion LLC), Device linked to (NOT LINKED Selected!), Device Time (America/Los_Angeles), and Detection direction (OUT -> IN). A blue "Save" button is at the bottom.

- Click **Save** to apply the settings.

8. Configure Expert Device Settings (Optional):

- **Wi-Fi SSID:** Enter your Wi-Fi network's SSID. A guest network is recommended for security.
* Skip this step if you have a stable guest network and would like to set up for **SSID: wnet / Password: wellpoint12345678**
- **Wi-Fi Password:** Enter the Wi-Fi password.
* Skip this step if you have a stable guest network and would like to set up for **SSID: wnet / Password: wellpoint12345678**
- **Maximum Detection Distance:** Set the maximum detection distance (in millimeters).
- **Beep on Detect** (optional): Set to 1 if you want the device to beep with each in/out detection.
- Click **Save** to apply the settings.



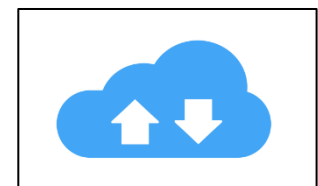
9. Temporary Network Setup:

- Share internet from your phone or set up a guest network with:
 - **SSID: wnet**
 - **Password: wellpoint12345678**
* Would you like to be sure about the settings? At the end of the guide, we'll provide a few tips on how you can do this on your smartphone.
- This network is temporary, just for the device to fetch new settings from the cloud.
If you want to use this default network as permanent you can use on the wireless router, just think about your local network security, we recommends to be a guest network.



10. Sync Device with Cloud:

- If you've just started the device, please wait about 15 seconds for it to initialize. Once the device begins blinking, you can continue.
- Press the device's button for three seconds; it will beep and blink.
 - **Success:** Six short beeps followed by three longer beeps, indicating successful cloud connection.



- **Failure:** Six short beeps followed by three sets of five beeps, indicating a connection issue. You can retry several times, sometimes it takes longer to connect to WiFi.

If does not works, ensure the shared Wi-Fi is set to:

- **SSID:** wnet
- **Password:** wellpoint12345678

11. Mount the Device:

- Find an optimal spot to adhere the device (e.g., wall, door frame, anti-theft gate).

- Place it at a height of 4.0-4.5 feet / 1.2-1.4 meters.

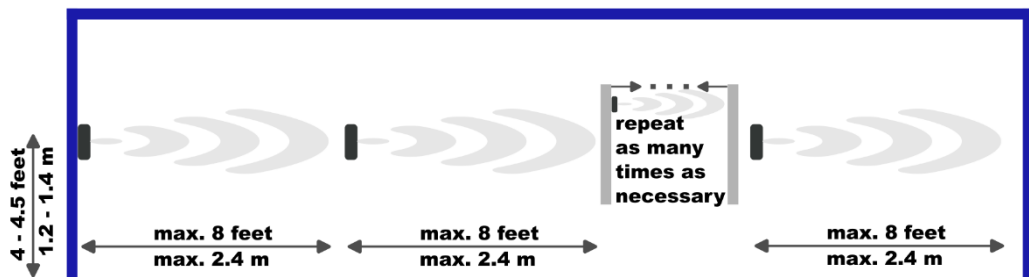
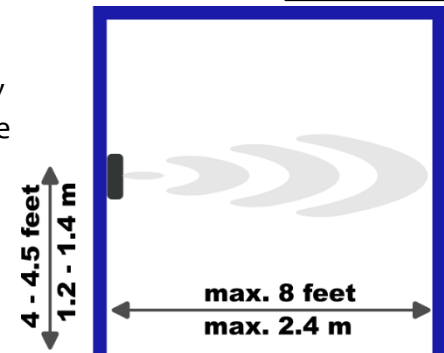
- We recommend a maximum detection distance of 8 feet / 2.4 meters.
The maximum detection distances may vary, as lighting conditions can increase or decrease the range.

- Position it as perpendicular as possible to the direction of people flow.

- If possible, avoid installing it facing the sun or a strong light source.

- Ensure the power is connected, and the cable is secured to prevent accidental disconnections

- Do you want to detect a greater distance? You can install multiple people counters.



12. Monitor Data in cloud: wellpoint.cloud:

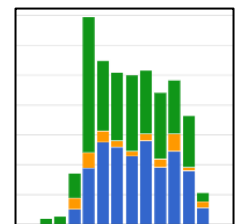
- **Dashboard**

- Visit the dashboard to monitor counting data, updated every five minutes.

- **Data Analysis & Export:**

- Visit the Data Analytics to analyze visitors data and download it in CSV format (compatible with Excel).

- **ERP Integration:**



- Easily import the downloaded CSV files into your existing ERP system for seamless data management.
- **Secure Linking:**
 - wellpoint.cloud provides secure links for data sharing and integration.

For more information and case studies please visit
wellpoint.cloud

Tips for Effective Hotspot Sharing

To change your iPhone's hotspot name and password, and then share it, follow these steps:

Step 1: Change Hotspot Name

1. **Go to** Settings > General > About.
2. Tap on **Name** at the top.
3. **Change the name** to "wnet" and tap **Done**. This will update the name of your hotspot network.

Step 2: Set Hotspot Password

1. Go back to **Settings** and select **Personal Hotspot** (or go to **Settings** > **Cellular** > **Personal Hotspot** on some models).
2. Tap on **Wi-Fi Password**.
3. Enter **wellpoint12345678** as the password and tap **Done** to save it.

Step 3: Share Your Hotspot

1. **Turn on the hotspot** by toggling the **Allow Others to Join** switch in the **Personal Hotspot** settings.
2. Share your hotspot by going to **Personal Hotspot** and sharing the name and password with the device you want to connect

To change your Android device's hotspot name and password and then share it, follow these steps:

Step 1: Change Hotspot Name and Password

1. **Go to** Settings.
2. Select **Network & Internet** (or **Connections** on some devices).
3. Tap on **Hotspot & Tethering** (or just **Mobile Hotspot**).
4. Choose **Wi-Fi Hotspot** (or similar).
5. **Edit the Network name** field to "wnet".
6. **Edit the Password** field to "wellpoint12345678".
7. Tap **Save** (if required) to confirm the changes.

Step 2: Enable and Share Your Hotspot

1. **Turn on the hotspot** by toggling the **Wi-Fi Hotspot** or **Mobile Hotspot** switch.
2. To share, provide the **network name** (wnet) and **password** (wellpoint12345678) to the device you want to connect.

