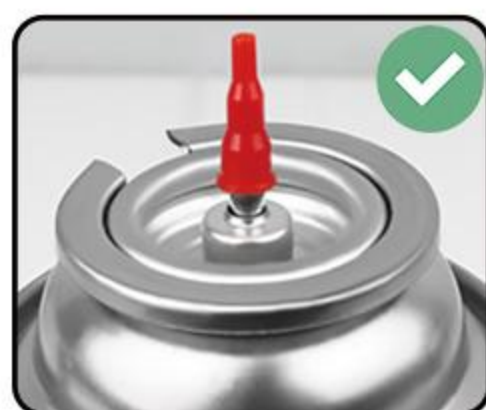


SONDIKO BUTANE TORCH USER MANUAL

NOTE: Sondiko butane torch comes without gas for safety reasons. You can refill the torch with any brand of butane

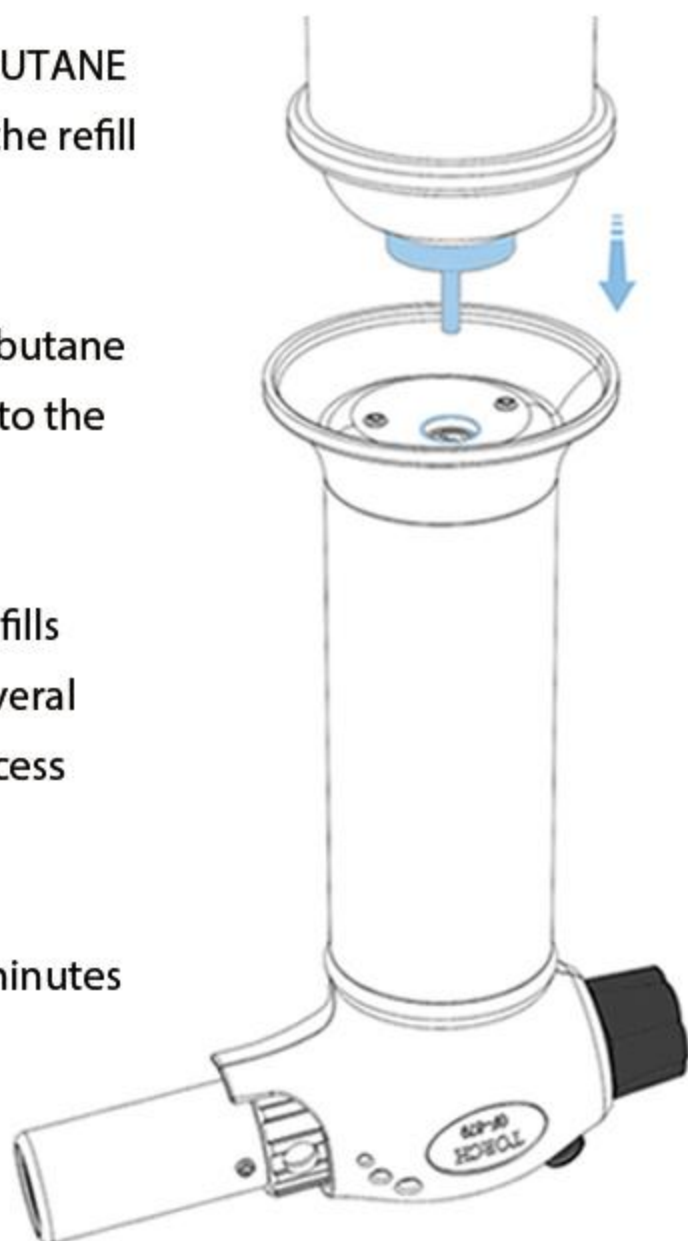


1. TO FILL THE TORCH, CHOOSE THE RIGHT BUTANE CAN. Turn the torch upside down to locate the refill valve.

2. With the torch still upside-down, turn the butane can upside-down and firmly insert the tip into the torch's refill valve.

3. You will hear a sizzling sound as the torch fills up—about 4 seconds. Repeat this action several times. When the torch is full, you will see excess butane being released from the torch.

4. Turn the torch back and allow it to sit 10 minutes for butane to stabilize.



HOW TO USE THE BUTANE TORCH?



1. Rotate the airflow control valve counterclockwise.



2. Press the electronic ignition.



3. Adjustment of flame size by rotating the gas control valve.



4. After use, turn the gas control valve clockwise until it will not turn

To Use with Sondiko Premium Butane Fuel Refill



WARNING

1. If you encounter a problem similar to the picture on the right, please don't worry.

The reason for this phenomenon:

High gas pressure in the torch

Solution:

Use the red inflation tool to release gas from the torch. Then fill it with a small amount of gas, and let it stand for 10 minutes before using it.



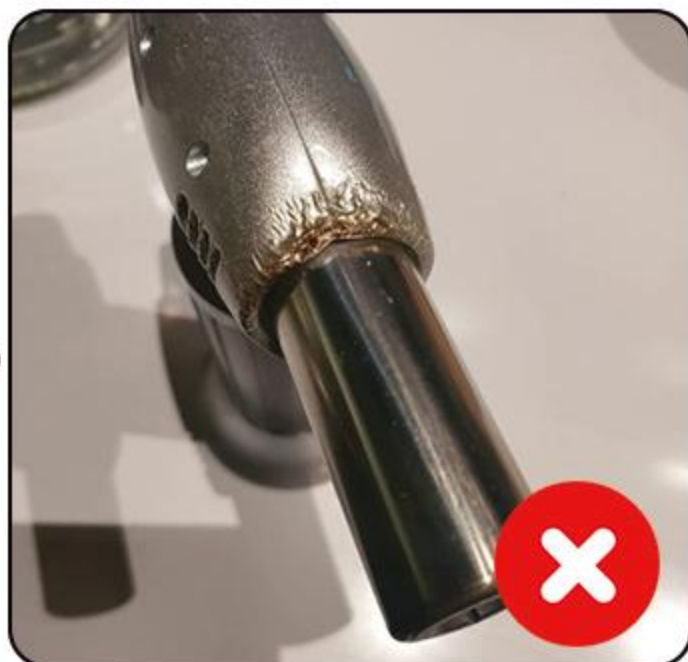
2. Don't aim it at people



3. WARNING: Keep away from children.



4. The torch should not be used continuously for more than 5 minutes. Otherwise, the torch will be damaged due to the high temperature, as shown in the picture on the right.



5. When the torch can't be lit, please don't use another igniter to ignite it.



6. Please do not disassemble the product at home; it is best to leave repairs to professional handling.

