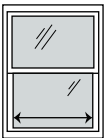
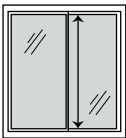
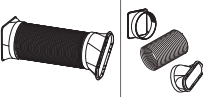


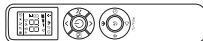

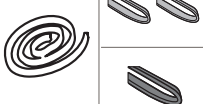


## Quick Start Guide

### Preparing the Window Panel

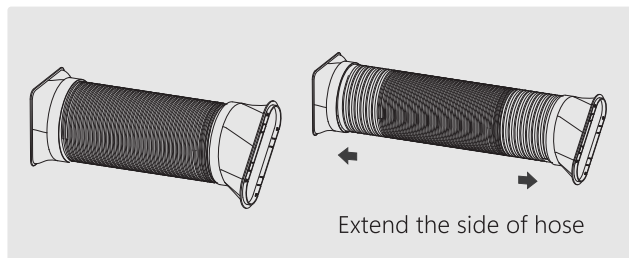
For Horizontal Sliding Window	For Vertical Sliding Window
	
Suitable for:20.5"~39.4"	Suitable for:20.5"~39.4"

### Accessories

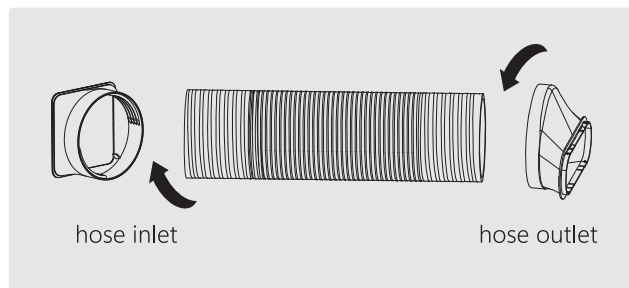
PARTS	NAME	QUANTITY	
	Hose inlet Exhaust hose Hose outlet	1 set	×1 ×1 ×1
	Window slider without hole (A) Window slider with hole (B)	1 set	×1 ×1
	Bolts: Metal locking screw	×2	
	Remote Control	×1	
	Drainage hose	×1	
	Foam seal A (adhesive type) size: 1000×40×4mm	×1	×2
	Foam seal B (no adhesive type) size: 1000×40×20mm		×1

### Installing the Window Panel and Air Conditioner

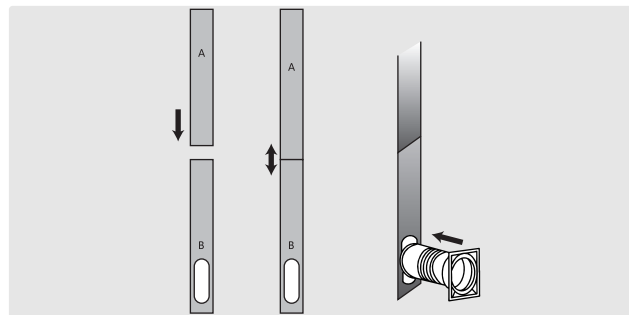
**Step1: Connect the hose connector to one end of the exhaust hose.**



**Step2: Connect the windows kit adapter to the other end of the exhaust hose.**

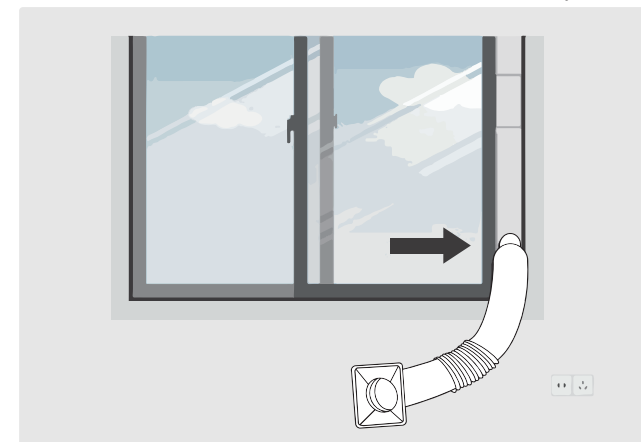


**Step3: Extend the adjustable window kit to the length of your window. Connect the exhaust hose to the window kit.**

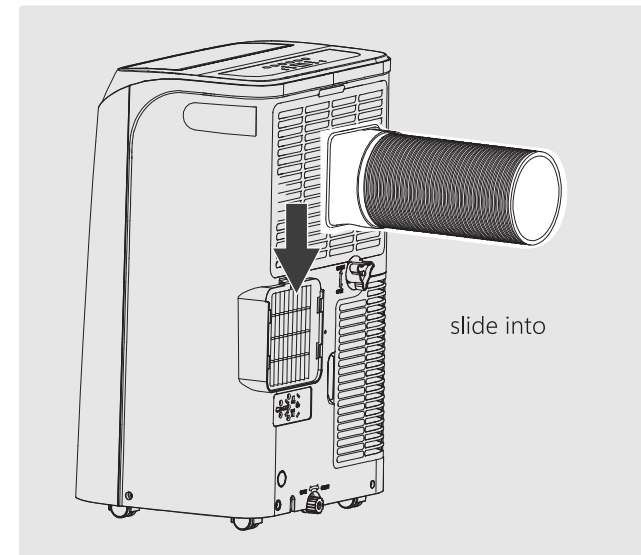


**Step4: Close your window to secure the kit in place.**

It needs to hold the window kit firmly in place,an secure the window kit with duct tape if required. It is recommended that the gap between the adapter and the sides of the window should be sealed off for maximum efficiency.

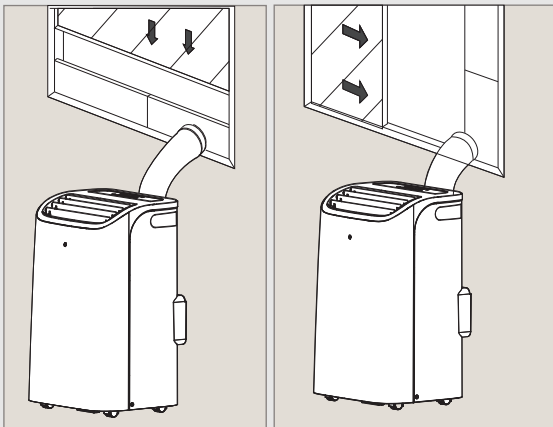


**Step5: Attach the hose connector to the exhaust air outlet of unit.**



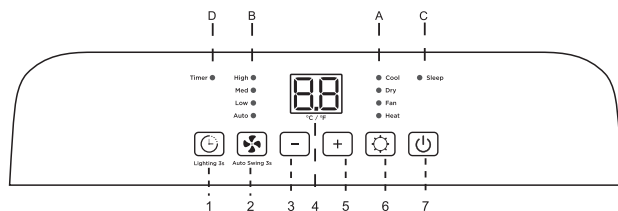
## Step6: Close your window to secure the kit in place.

It needs to hold the window kit firmly in place, and secure the window kit with duct tape if required. It is recommended that the gap between the adapter and the sides of the window should be sealed off for maximum efficiency.



## Step7: Adjust the louver at the air outlet, and then switch on the unit.

## Display



1	Timer button	2	Fan speed button
3	Decrease button	4	Display screen
5	Increase button	6	MODE button
7	ON/OFF button		
A	Mode symbol	B	Fan speed symbol
C	Sleep symbol	D	Timer symbol

## Control Panel

### PowerButton

- Turn on/off.

### Mode Button

- Switch between Cool, Heat, Dry (dehumidify), and Fan only modes.

### Increase (+) and Decrease (-) Buttons

- Select to increase or decrease temp/timer.

### Timer Button

- Select to set a timer (0-24h).

### Fan Speed Button

- Adjust airflow speed.

### Swing Louver Button

- Sets the air discharge louvers to oscillate left and right.

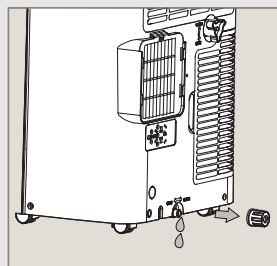
### Sleep Function Button(Only available in Cool Mode)

- Turns Sleep Function on/off.

## Cleaning and Maintenance

### Manual drainage

When the machine stops after the water is full, please unplug the power plug.

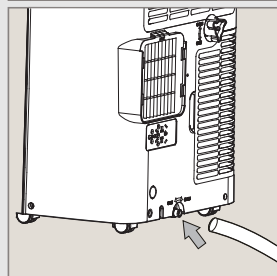


1. Place a water container below the side water outlet behind the unit.

2. During drainage, the body can be tilted slightly backwards.

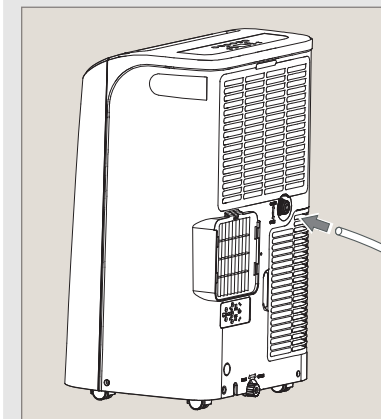
3. Unplug the water plug, the water will automatically flow into the water container.

4. When the water is fully discharged, place the water plug back into place.



## Continuous drainage

1. Switch off the unit before operating.
2. Remove the plug of the water outlet opening, and keep it in a safe place.
3. Securely and properly connect the drain hose and make sure it is not kinked and clear of obstruction.
4. Place the outlet of the hose over a drain or bucket and ensure that water could freely flow out of the unit.
5. Do not submerge the end of the hose into water; otherwise it can cause an "Air Lock" in the hose.

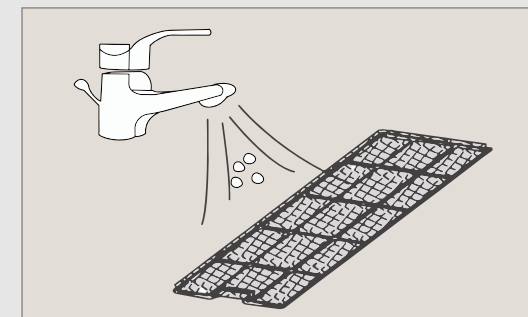


### To avoid water spillage:

- As the negative pressure of the condensate drain pan is large, tilt the drain hose downward towards the floor. The degree of inclination should exceed 20 degrees.
- Straighten the hose to avoid a trap existing in the hose.

## Air filter cleaning

For better performance and less operational noise, clean the appliance filter at least once every two months.



1. Remove both grills from the back of the unit.
2. If there is stubborn dirt or dust, immerse in lukewarm water and rinse a couple of times.
3. Let the filter dry before re-attaching to the main unit.