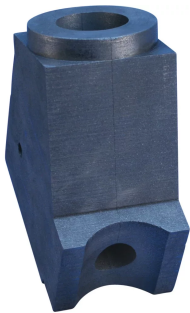


Angular Pouring Basin, Top Fill, 45°, 1.88" dia

CATALOG NUMBER

RBWS1537C



Top fill pouring basins should be used on angular installations whenever the clearances of the structure allow. The compact size of the top fill pouring basins help ensure the best possible flow of filler material.

FEATURES

Made from heat-resistant graphite

Durable, re-usable and long lasting

Designed for use with T-Series and B-Series horizontal top fill sleeves

PRODUCT ATTRIBUTES

Material: Graphite

Diameter (Ø): 1.88"

Length 1 (L1): 6.38"

Length 2 (L2): 0.56"

Width (W): 3"

Height 1 (H1): 0.38

Height 2 (H2): 3 1/2"

Angle (a): 45 °

Unit Weight: 9 lb

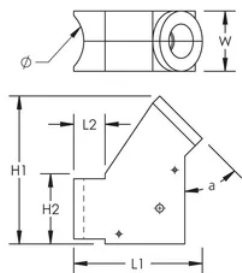
ADDITIONAL PRODUCT DETAILS

RBWS1537 pouring basins require one RBM2660 pouring basin frame (sold separately).

Prior to installation, please read and understand all of the detailed instructions and safety notices provided in the nVent LENTON Cadweld Rebar Splicing System Instruction Manual.

Sizes not shown may be available by special order. Contact your nVent LENTON representative for more information.

DIAGRAMS



WARNING

nVent products shall be installed and used only as indicated in nVent's product instruction sheets and training materials. Instruction sheets are available at www.nvent.com and from your nVent customer service representative. Improper installation, misuse, misapplication or other failure to completely follow nVent's instructions and warnings may cause product malfunction, property damage, serious bodily injury and death and/or void your warranty.

North America

+1.800.753.9221
Option 1 – Customer Care
Option 2 – Technical
Support

Europe

Netherlands:
+31 800-0200135
France:
+33 800 901 793

Europe

Germany:
800 1890272
Other Countries:
+31 13 5835404

APAC

Shanghai:
+ 86 21 2412 1618/19
Sydney:
+61 2 9751 8500



Our powerful portfolio of brands:

CADDY ERICO HOFFMAN ILSCO SCHROFF TRACHTE