

vLinker MC+ Quick Start Guide for iOS and Android

1. How do I know whether my vehicle is OBDII compliant?

1996 or newer model year vehicle sold in the United States. United States legislation requires all cars and light trucks model year (MY) 1996 and newer to be OBD2 compliant.

2001 or newer model year gasoline vehicle sold in the European Union. 2004 or newer model year diesel vehicle sold in the European Union.



(U.S. OBDII Certified label)

2. I want to know which OBDII protocols supported by vLinker MC+?

- ✓ SAE J1850 PWM
- ✓ SAE J1850 VPW
- ✓ ISO 9141-2
- ✓ ISO 14230-4(slow)
- ✓ ISO 14230-4(fast)
- ✓ ISO 15765-4(CAN)
- ✓ SAE J1939(CAN)
- ✓ ISO 11898(raw can)
- ✓ Single Wire CAN(GMLAN)
- ✓ Medium Speed CAN(MS-CAN)

3. Download & install APP.

- ✓ Torque Lite<most popular Lite version is free>
- ✓ OBD Auto Doctor<Excellent Free app, Upgrade to Pro in-app>
- ✓ OBD Fusion<Excellent 3rd party app>
- ✓ BimmerCode<download from google play of Android>
- Allows you to code the control units in your BMW or mini to unlock hidden features and customize your car to your liking.
- ✓ FORScan for Windows<Download from www.forscan.org>and for Android <download from google play>

FORScan is a powerful software scanner for Ford, Mazda, Lincoln and Mercury vehicles, designed to work over OBDII protocol and J2534 Pass-Thru compatible adapters.



Car Scanner



Auto Doctor



OBD Fusion



BimmerCode



FORScan Lite



Torque (Lite)

4. I want to know which App does vLinker MC+ support?

NOTE:

vLinker MC+(BT3.0) can support many apps, such as TORQUE Lite/Pro, OBD Fusion, DashCommand, CAR SCANNER ELM OBD2, Carista OBD2, BimmerCode, BimmerLink, JScan, OBD Auto Doctor, LeafSpy, Dr.Prius, TrackAddict, Harry's LapTimer, FORScan Lite, Garage Pro, etc.

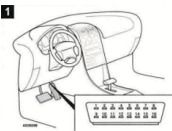
vLinker MC+ (BLE) can support many apps, such as OBD Fusion, CAR SCANNER ELM OBD2, BimmerCode, BimmerLink(iOS), JScan, OBD Auto Doctor, Dr.Prius, inCarDoc, Garage Pro, etc.

Many apps may be added to the compatibility list. Product page will be updated accordingly or contact us regarding app compatibility.

5. Plug vLinker MC+ into the OBD port.

The OBDII DLC is usually located under instrument panel (Dash) on the driver's side.

If you want to know more about DLC, please visit: [https://en.wikipedia.org/wiki/Data_link_connector_\(automotive\)](https://en.wikipedia.org/wiki/Data_link_connector_(automotive))



6. Turn ignition to Key On Engine Off Position.



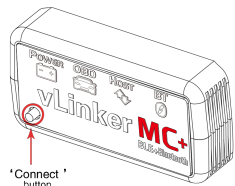
"POWER" green LED is turn on, and the "BT" blue LED starts to blink slowly, the "OBD" red LED and "HOST" orange LED blink once. —LEDs are off? Check vehicle for blown fuses.

7. Torque(Lite) Connection Guide for Android (for example)

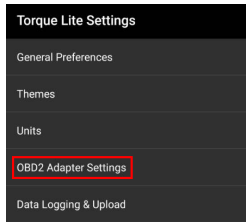
Step 1: Insert the adapter into the OBD interface of the car. Turn ignition to Key On Engine Off Position.

Press the "Connect" button on vLinker MC+

IMPORTANT NOTE

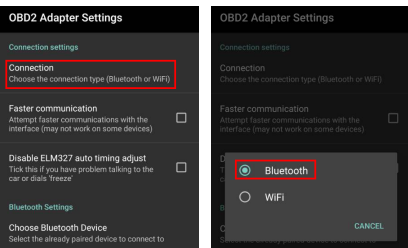


Step 5: Select OBD2 Adapter Settings.

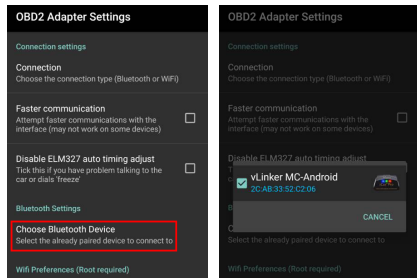


Step 6: Click Connection.

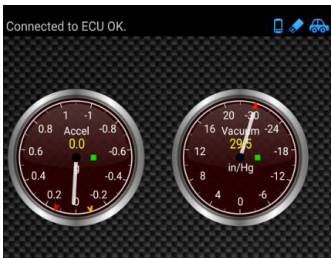
Step 7: Choose the connection type Bluetooth.



Step 8: Choose Bluetooth Device "vLinker MC-Android".



Step 9: If the communication is successful, you can select the control unit you want...



8. Car Scanner Connection Guide for iOS (for example)

Step 1: Insert the product into the OBD interface of the car. Turn ignition to Key On Engine Off Position. Enable your phone Bluetooth. (Just enable Bluetooth button on the iOS device and continue to the OBD app setting.)



IMPORTANT NOTE:

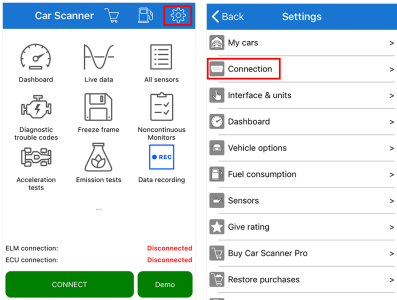
Can not see Bluetooth device name in iPhone?! Don't worry. This device only require to configure Bluetooth device name in the OBD app setting. Just enable Bluetooth button on the iOS device and continue to the OBD app setting in Step 2

ONLY iOS supported Bluetooth profiles can show device name. Bluetooth LE 4.0 technology isn't apply for the supported Bluetooth profiles from iOS, so user can not find vLinker MC+ Bluetooth device name.

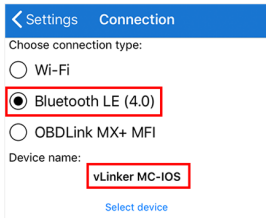
For iOS supported Bluetooth profiles, please refer check this page: <https://support.apple.com/en-us/HT204387>

Step 2: Open Car Scanner APP, Click

Step 3: Click" Connection".

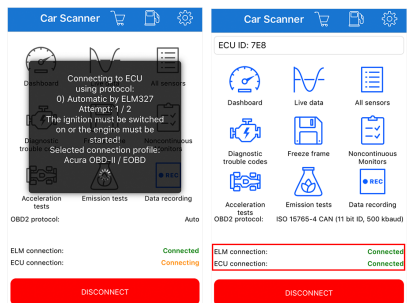


Step 4: Select "Bluetooth LE(4.0)", Device name select "vLinker MC-IOs".

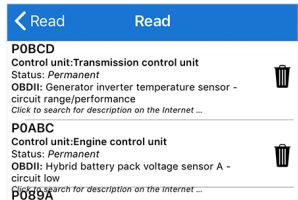


Step 5: Return to the main page and click "CONNECT". This may take a few minutes.

Step 6: ELM and ECU are successfully connected.

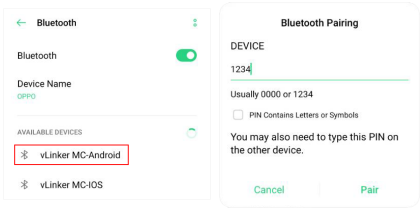


Step 7: If the communication is successful, you can select the control unit you want...



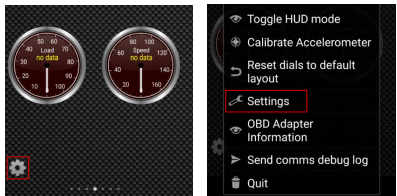
Step 2: Open the Bluetooth settings. Search for the device name "vLinker MC-Android" and click Pair.

Step 3: Enter the pairing code: 1234 If the pairing is successful, you can open the APP to set up the connection.



Note: Please select the Bluetooth Device Name "vLinker MC-Android" (Searching for Bluetooth may take some time.)

Step 4: Choose Open the app's Settings.



IMPORTANT NOTE: Different OBD II app has different Bluetooth setting steps. Please follow the steps on the app to configure the setting.

Features of vLinker MC +

Automatically OBD device wake up and Super Power Saving on vLinker series

✓ Allow the user to leave the vLinker MC+ in OBD Socket without unplug and plug operation. Supper low power consumption<sleep mode> is low to "3mA" level.

✓ Wake up vLinker MC+ in standby mode by pressing the key.

Need Help?

Please email to us at any time: sale@vgate.com.cn
We will reply you within 24 hours of the working day.

Product Upgrade:

Website: <http://www.vgatemall.com/downloadcenter>
To upgrade the product, please download the upgrade package and user manual of the corresponding model.