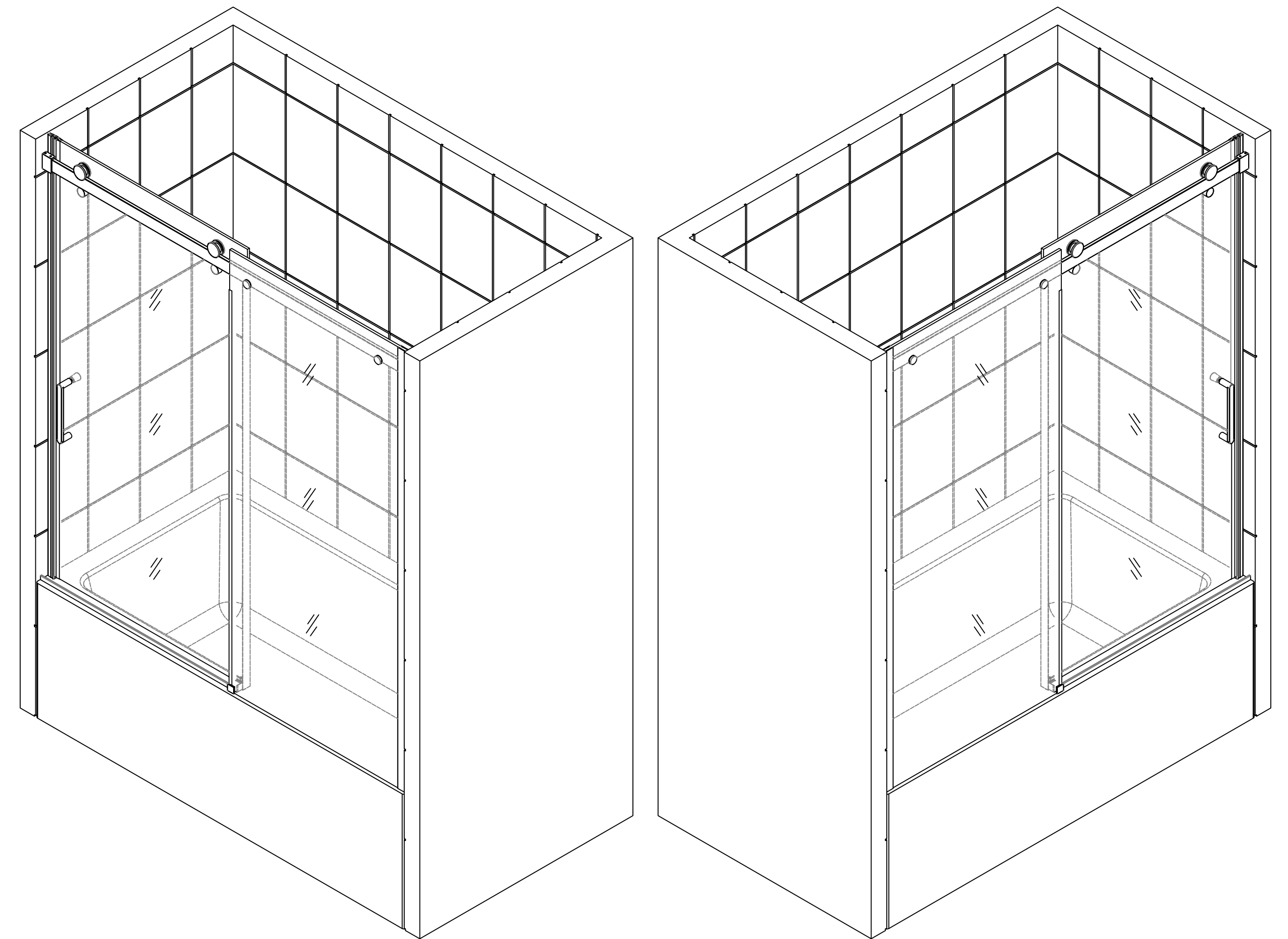
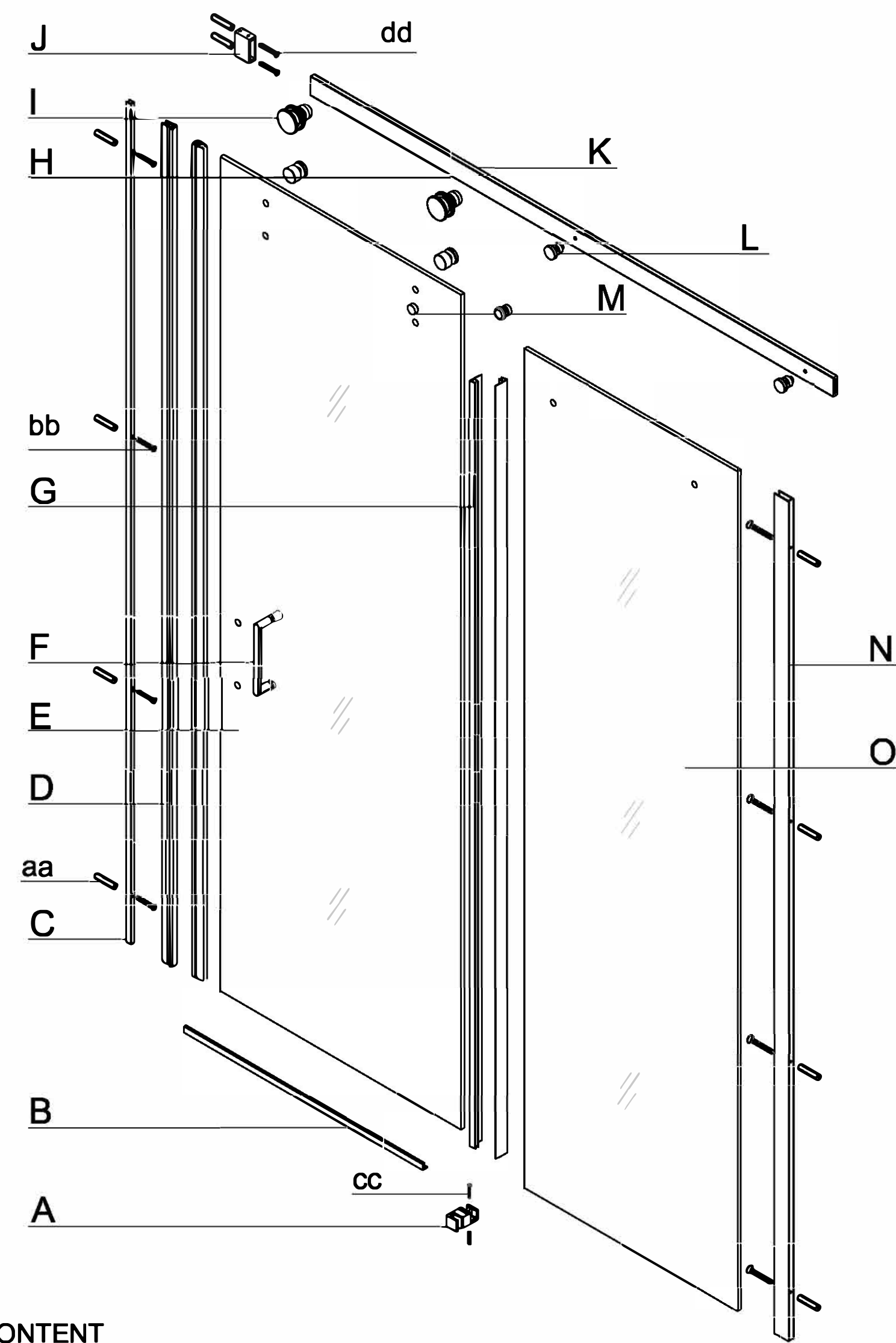


Shower Door Installation Instructions



 **Reversible For a Left or Right Door**

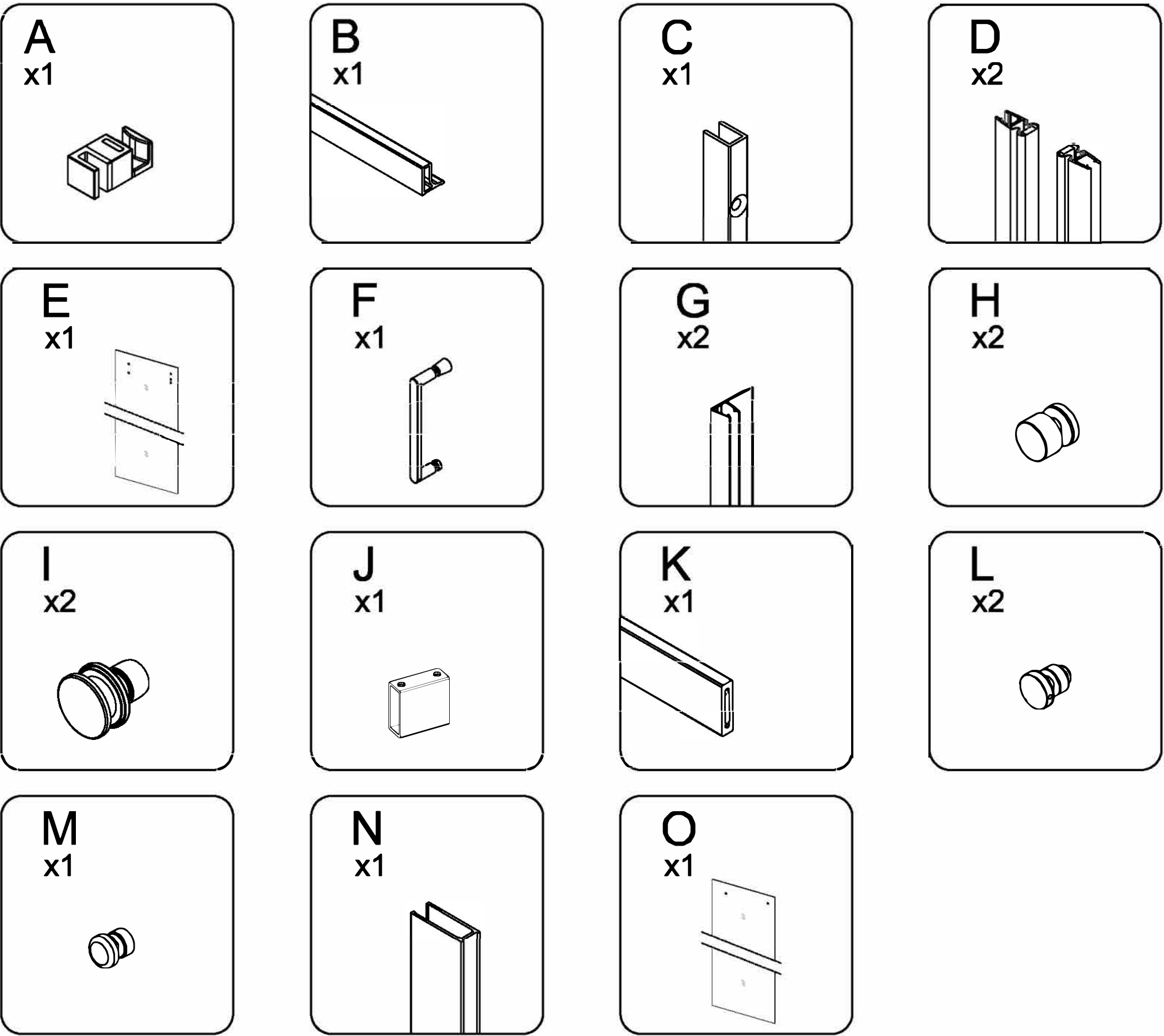
PACKAGE CONTENT



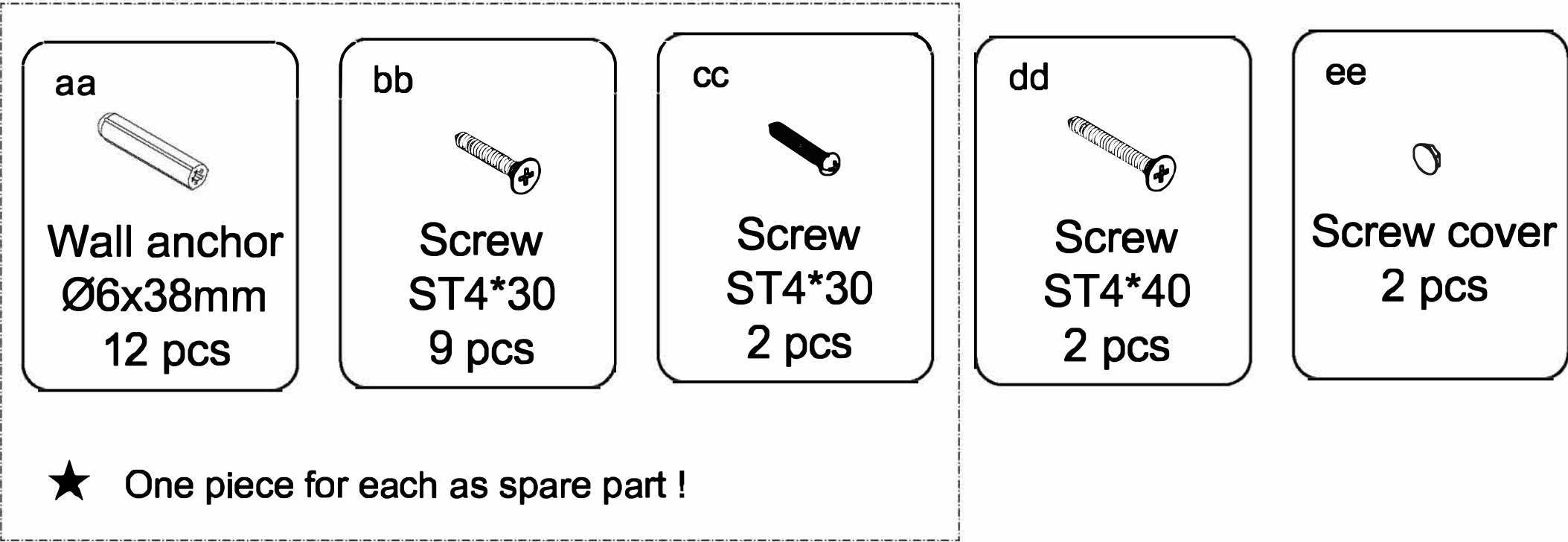
PACKAGE CONTENT

PART#	DESCRIPTION	QTY	PART#	DESCRIPTION	QTY
A	Bottom guild	1	I	Roller	2
B	Water seal	1	J	Wall Bracket Assembly	1
C	U channel-1	1	K	Top Track Assembly	1
D	Magnetic door seal strip	2	L	Glass holders	2
E	Door panel	1	M	Stopper	1
F	Handle	1	N	U channel-2	1
G	F shape seal	2	O	Fixed panel	1
H	Anti-Jump Assembly	2			

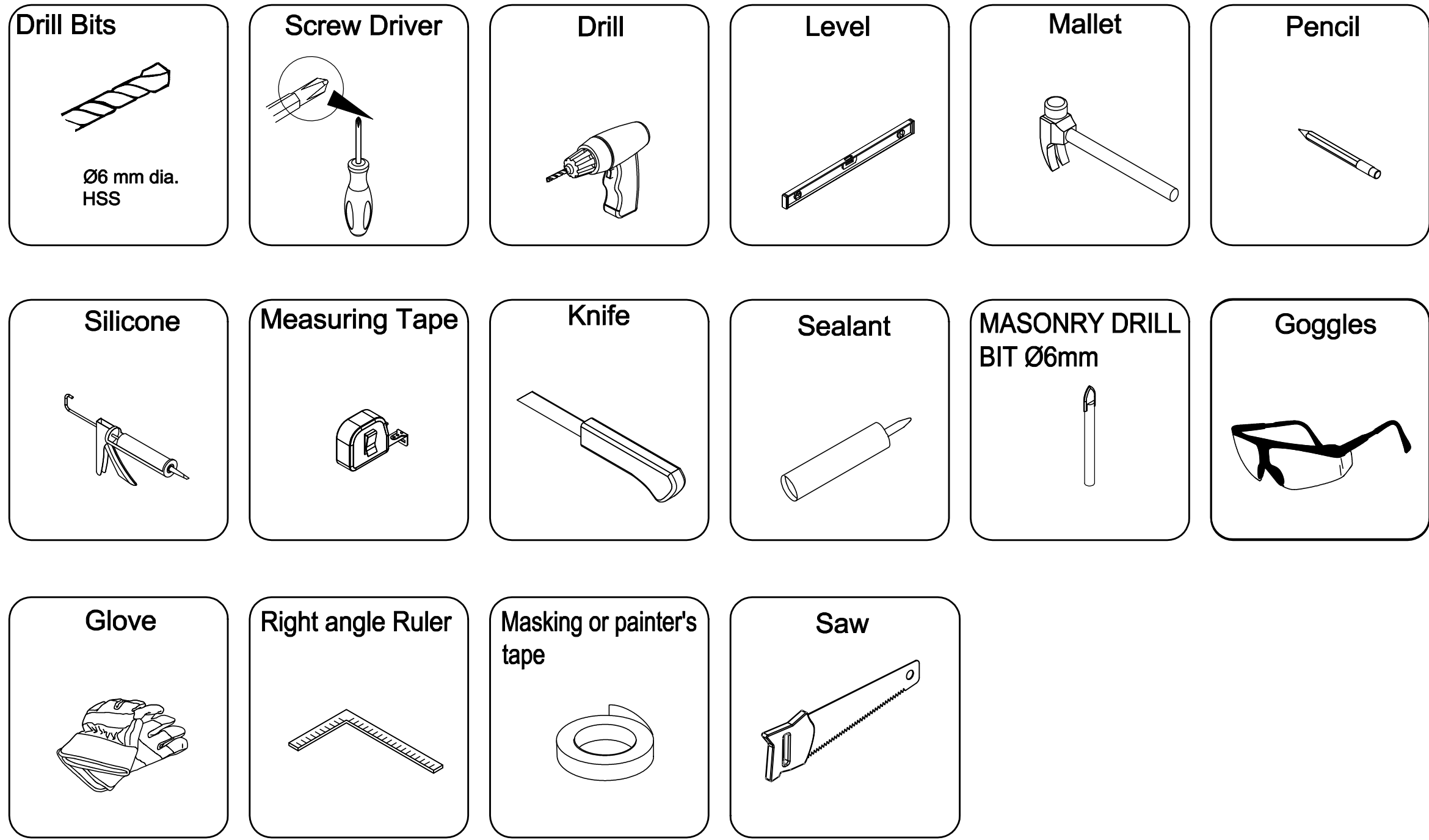
PACKAGE CONTENT



HARDWARE CONTENT



TOOLS REQUIRED



SAFETY INFORMATION

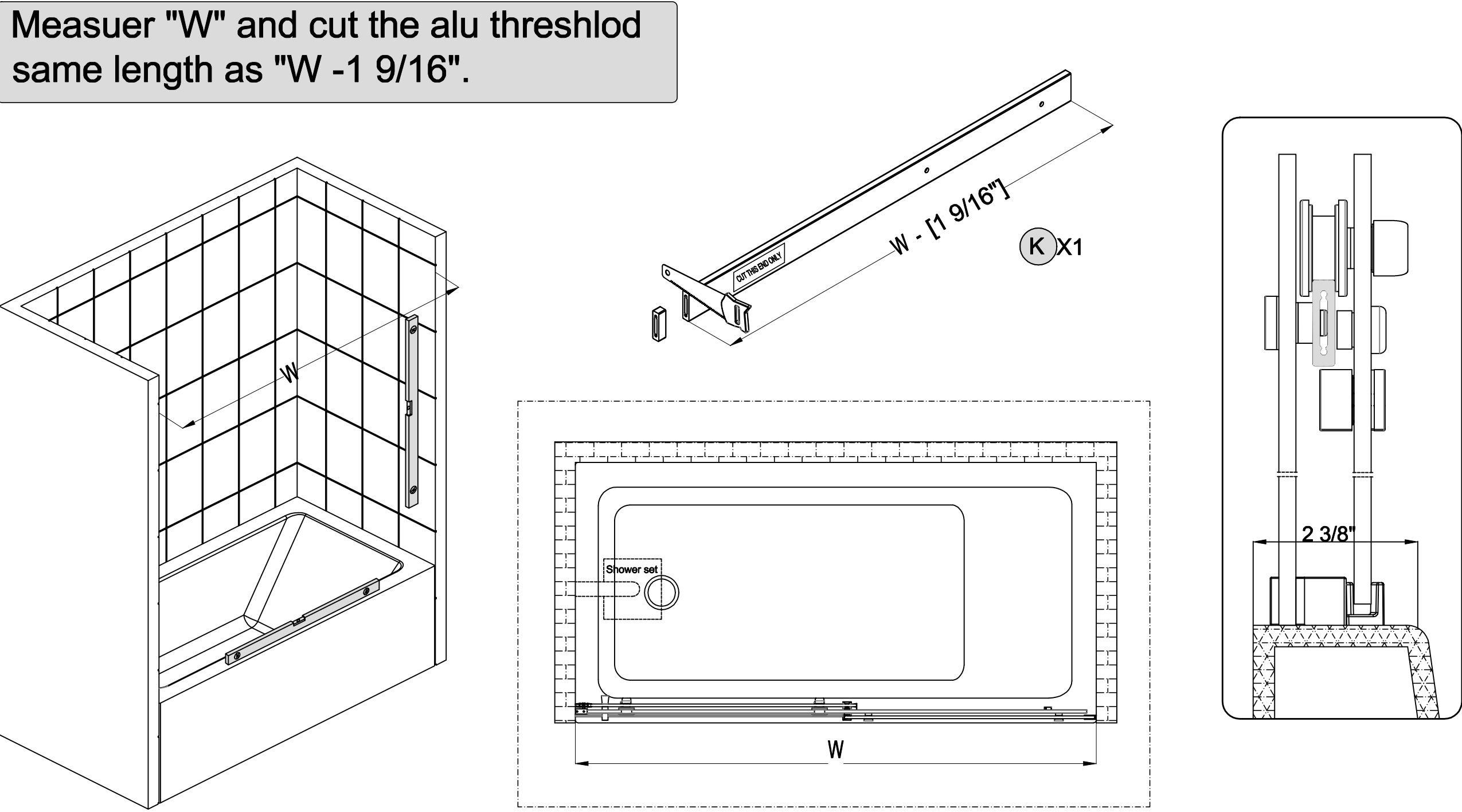
CAUTION

- Please carefully read the following important safety information before handling or installing this shower. There is a risk of serious injury while handling this product. To minimize these risks, please note:
- Always wear safety glasses and gloves while handling.
 - Always read and follow all the steps in the installation instructions.
 - Inspect all contents and glass for damage before installation.
 - Extreme caution should be taken while handling the glass during installation as the tempered glass may shatter if in contact with a hard surface.
 - Handle the tempered glass with caution! Improperly handling the glass can cause it to break suddenly in small pieces (never in pointed fragments).
 - Always take all precautions not to touch the tempered glass with any tools during the installation, or after installed.
 - Do not cut or modify the tempered glass as it will shatter if cut.
 - Carefully remove product from packaging and keep packaging until installation is complete.
 - Inspect all parts for damage; if there is damage to the unit prior to installation, please contact customer service at the number provided in this guide.
 - Install the shower on a floor that is level and able to accommodate the weight of the unit and an occupant.
 - Consult local building codes and compliance standards prior to installation and ensure conformity.
 - After installation, and from time to time, check the glass for fit and finish to ensure that nothing has come loose since installation.
 - Keep this installation manual for future reference.

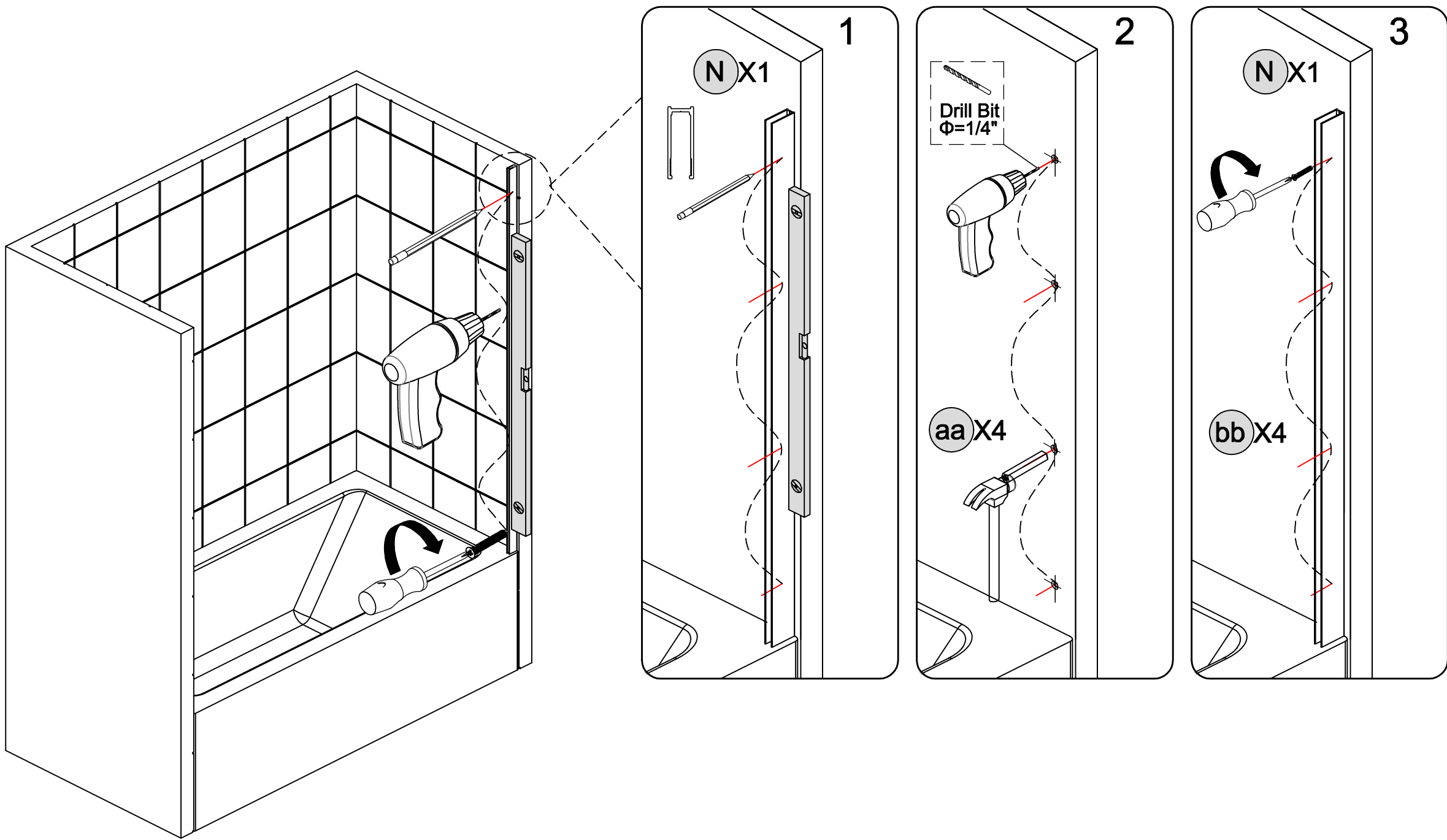
NOTE: Heavy product ! You will need at least two people to install this unit properly.

1 Check both of the ▼finished walls for plumb and the threshold for level.

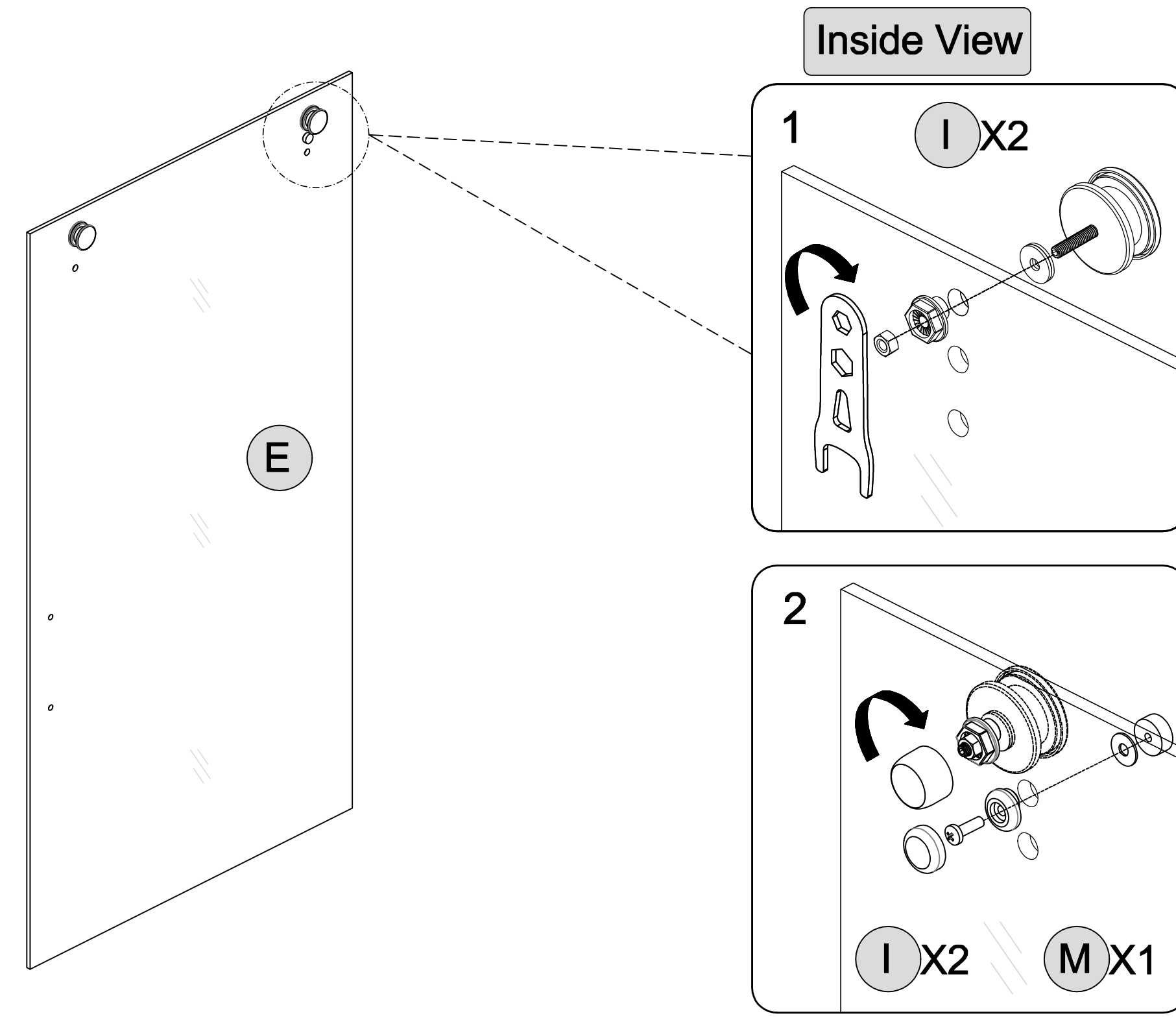
NOTE: This model requires a minimum 2-3/8" of flat threshold space for installation.



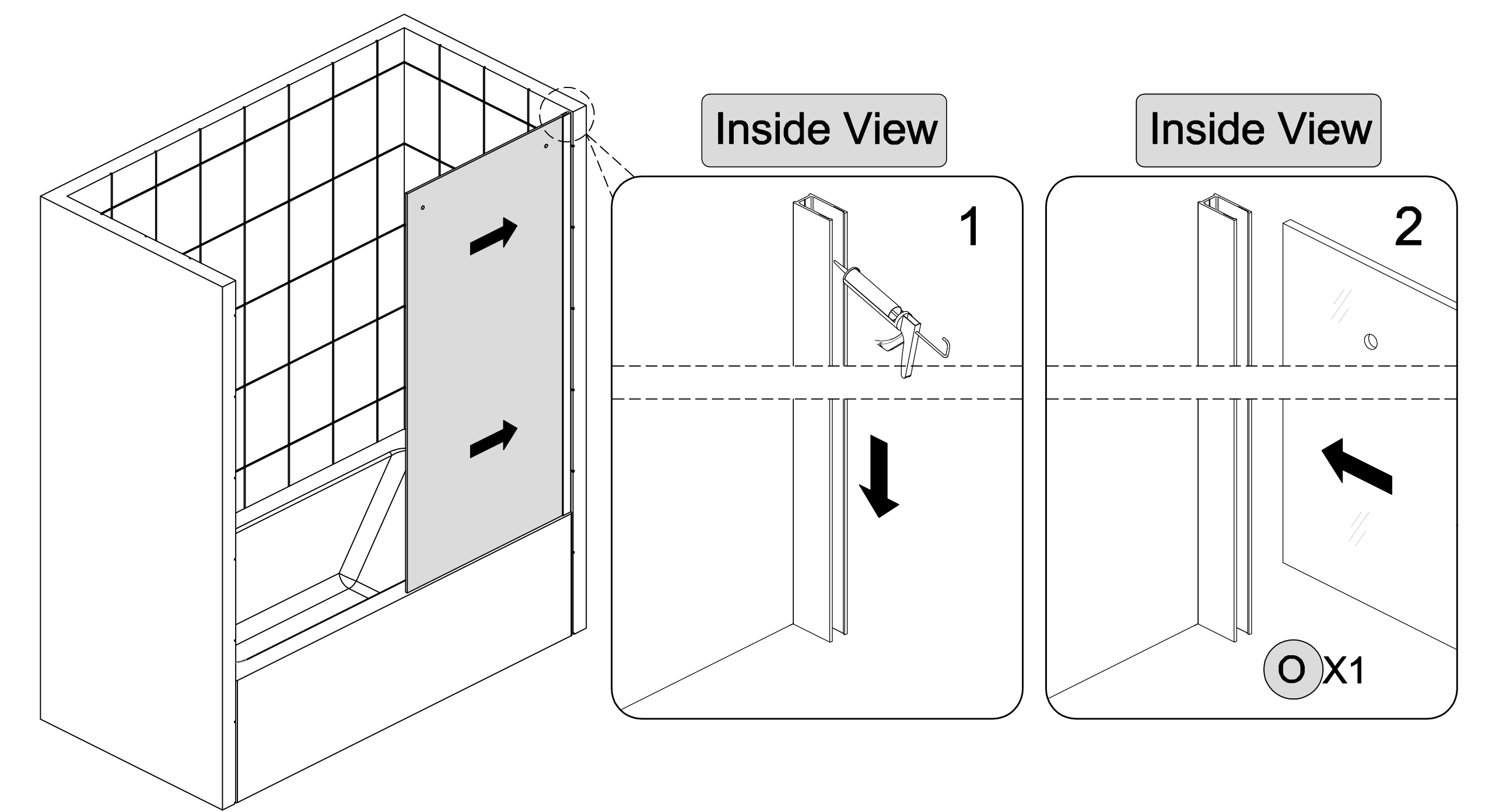
2 U channel-2 Installation



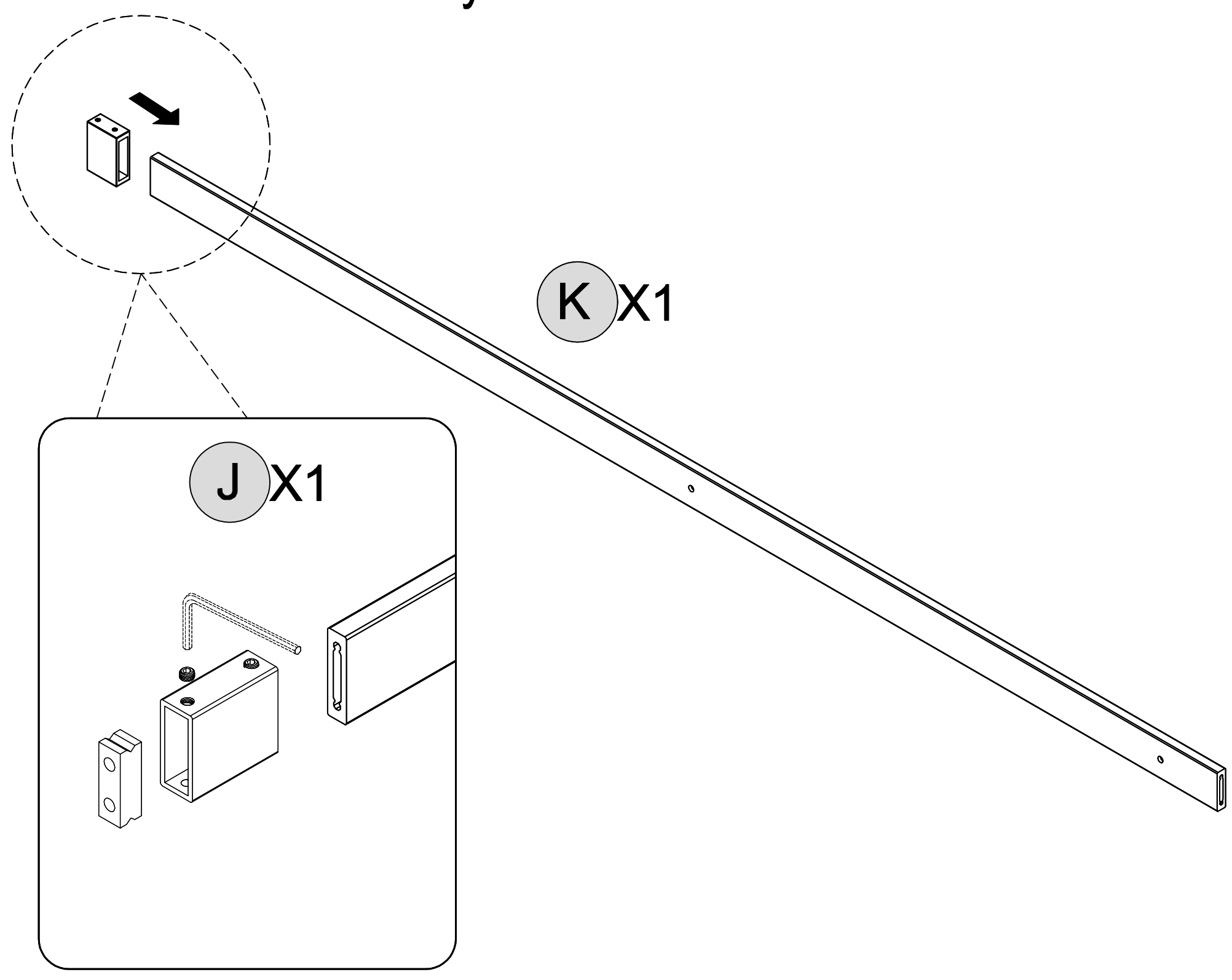
3 Roller & Stopper Installation



5 Fixed panel Installation

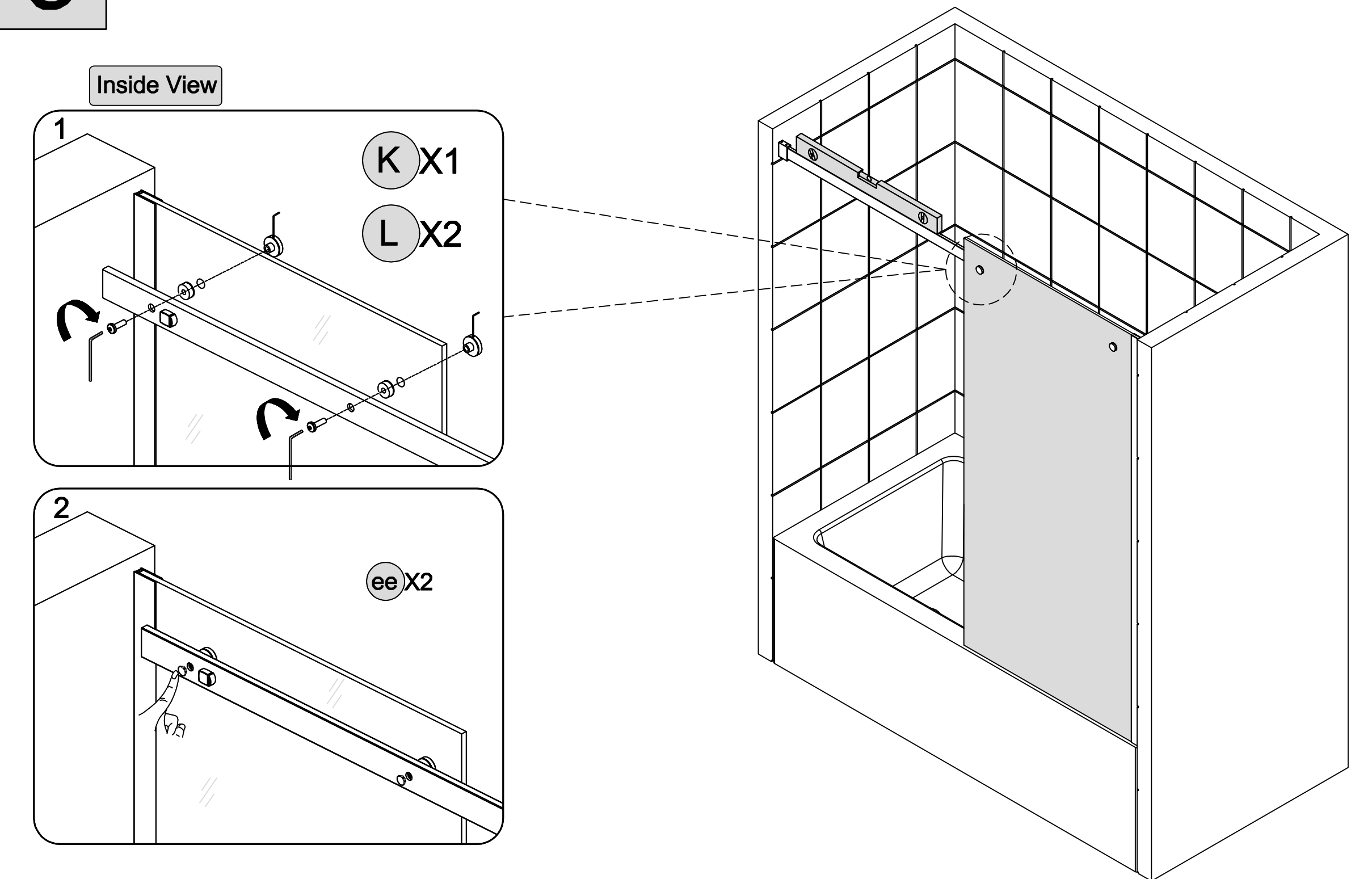


4 Wall Bracket Assembly Installation



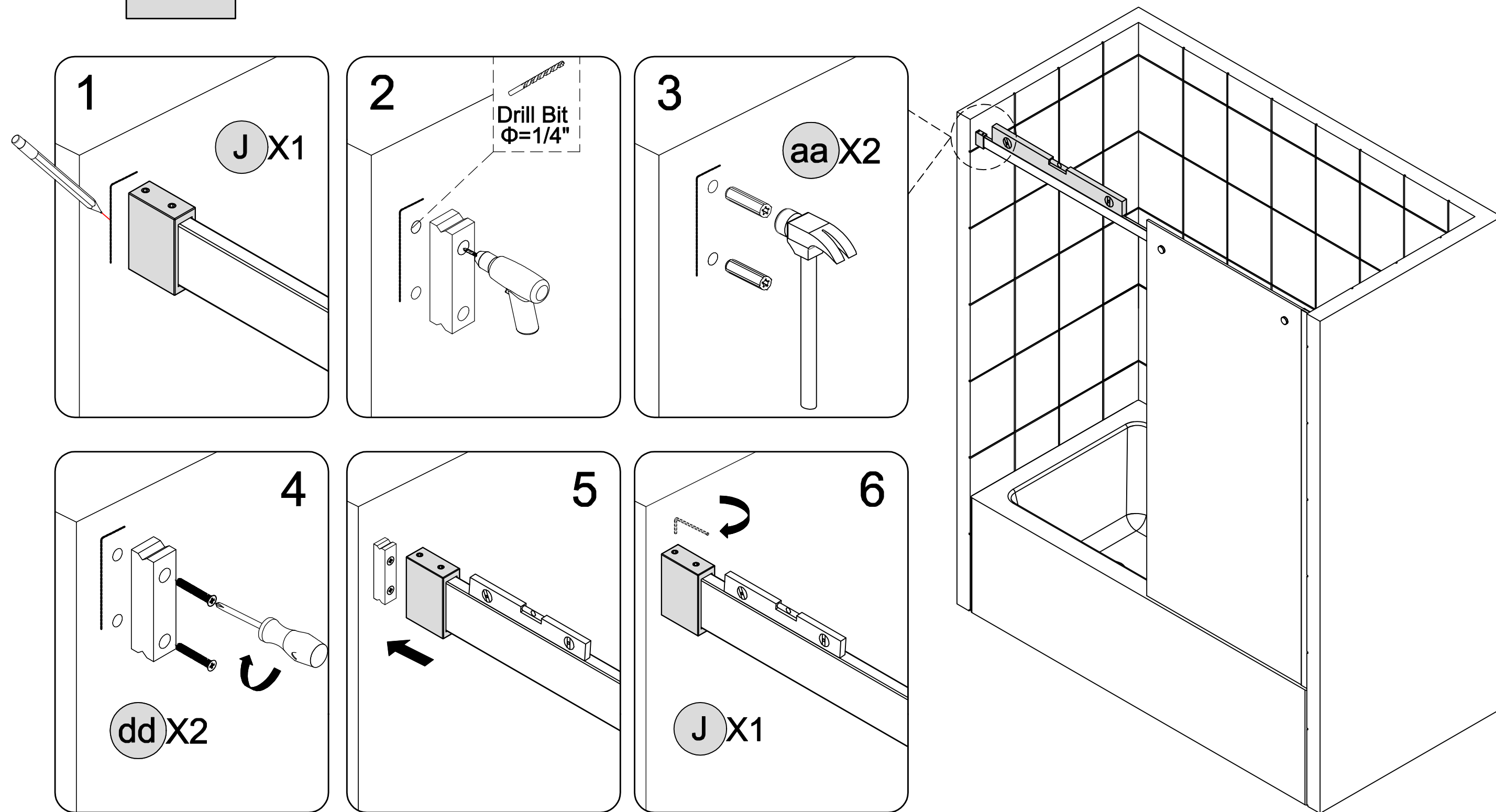
6

6 Top Track Assembly Installation

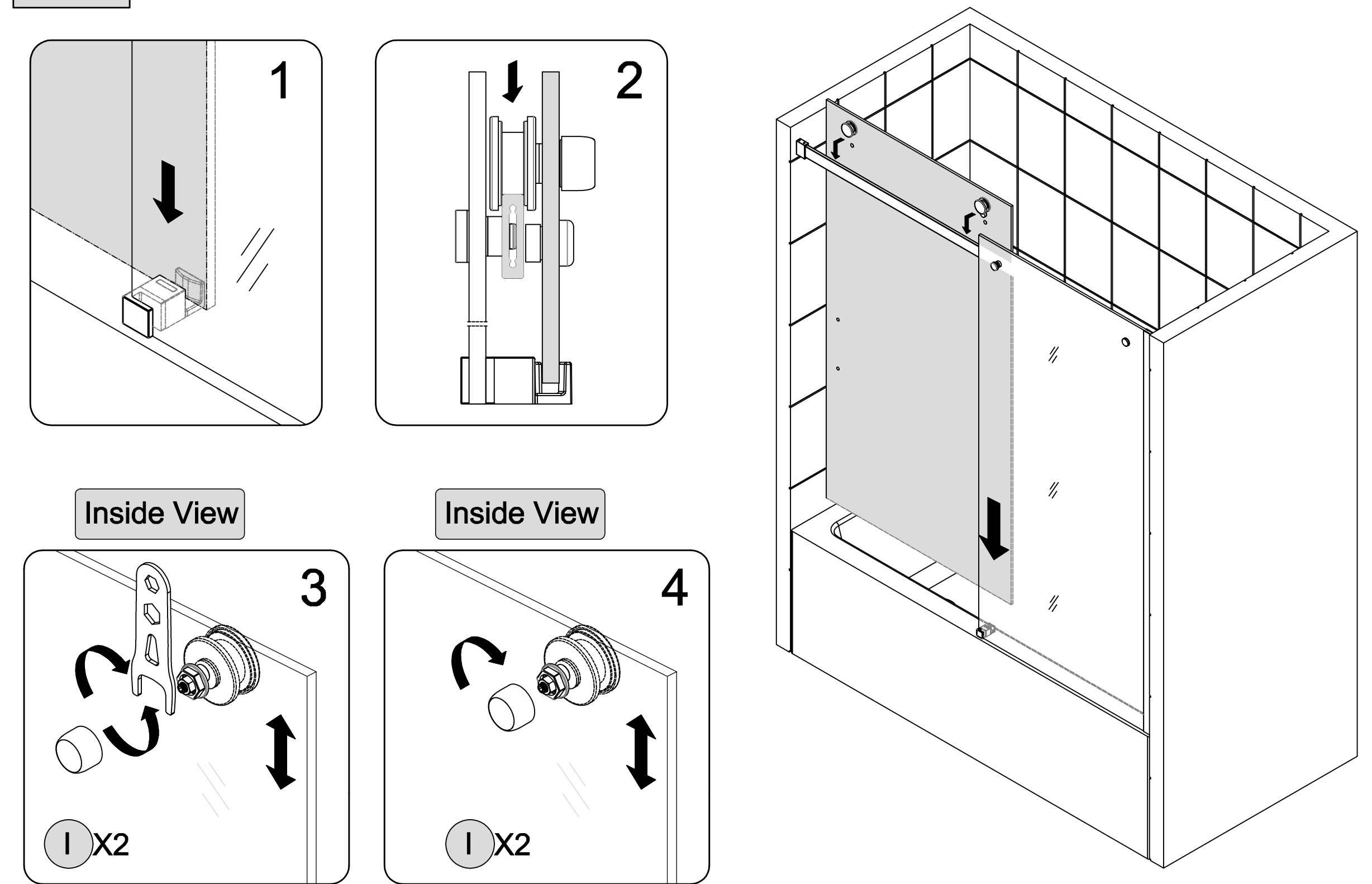


7

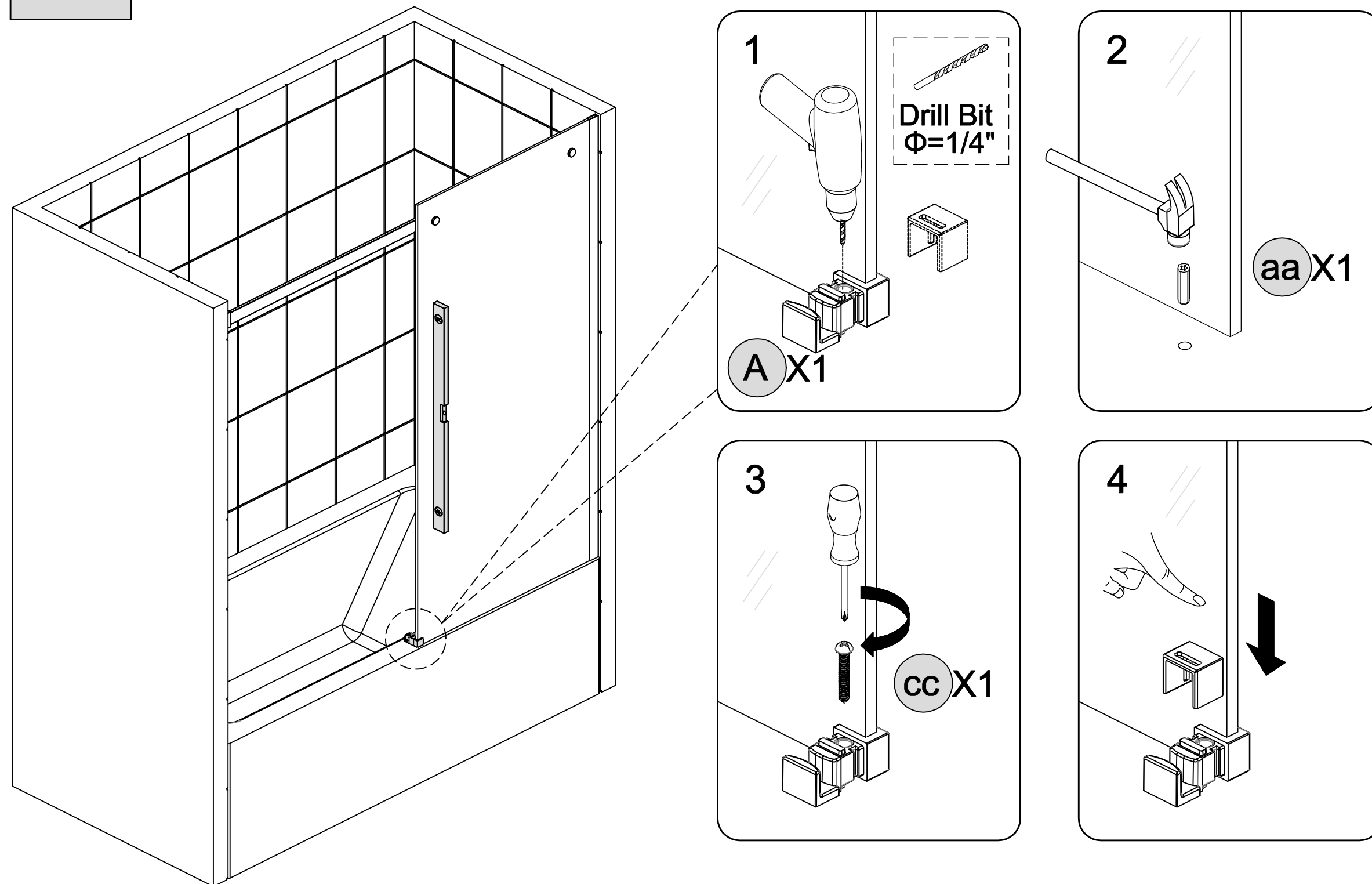
7 Wall Bracket Assembly Installation



9 Door panel Installation

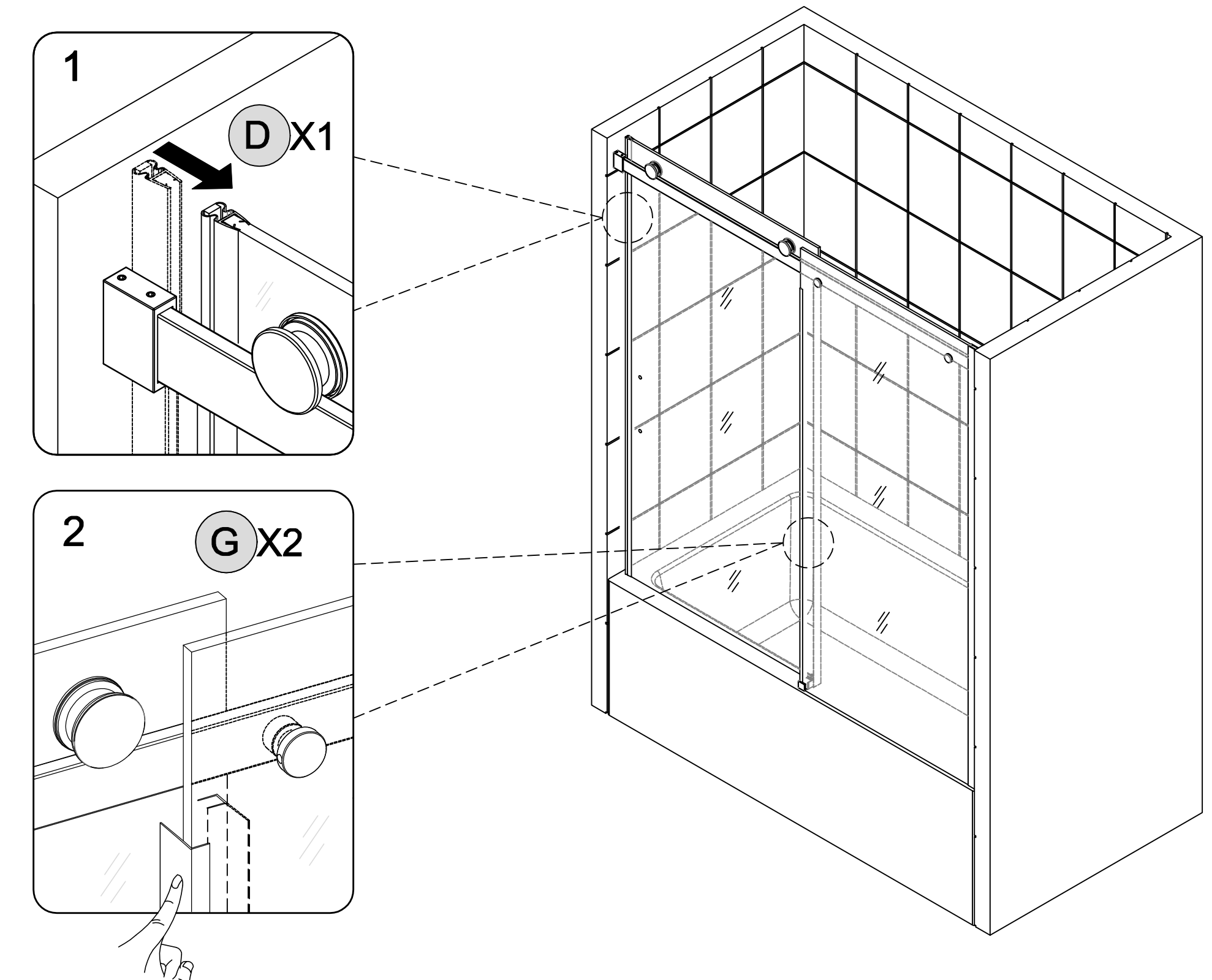


8 Bottom guild Installation



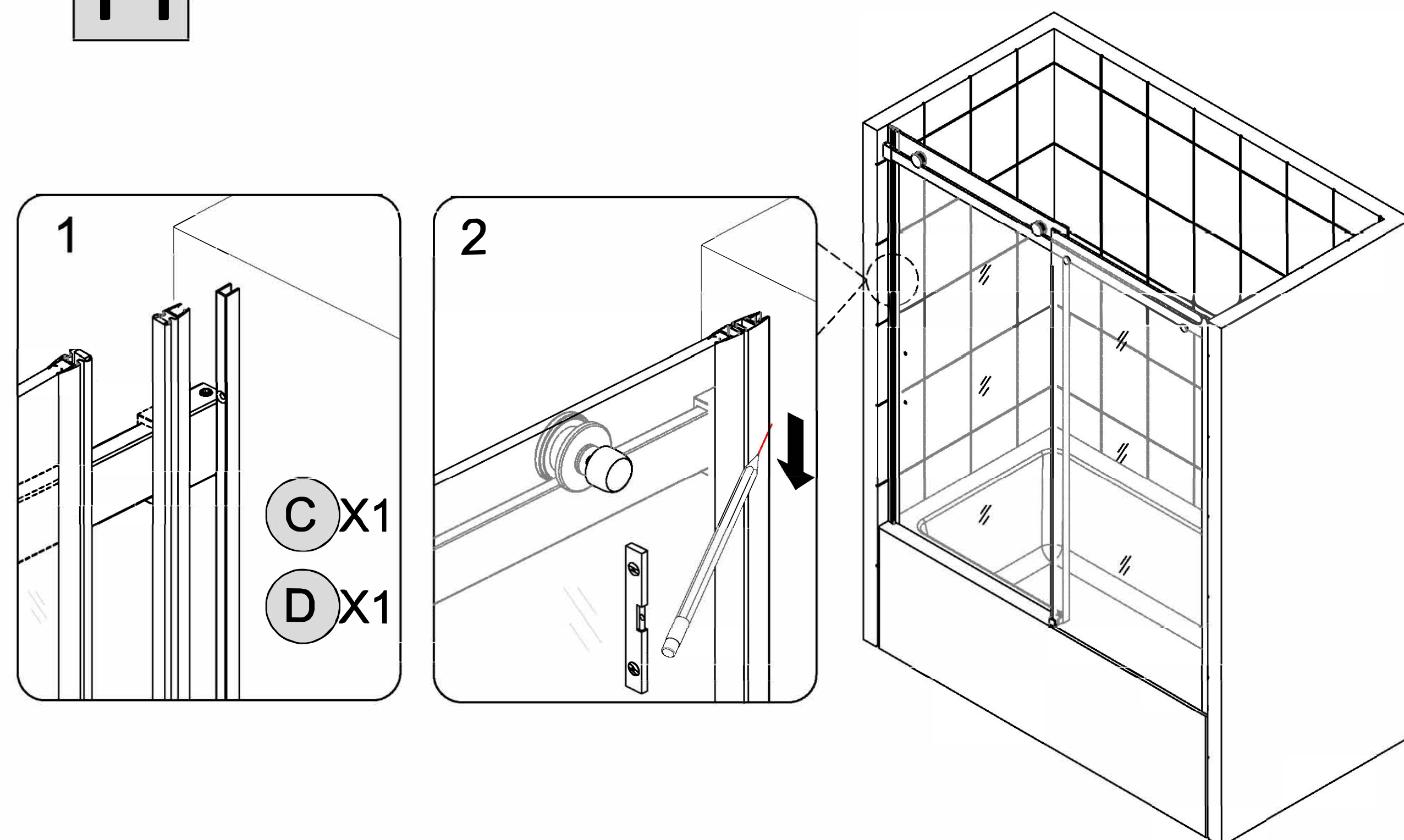
8

10 Magnetic strip Install to door panel

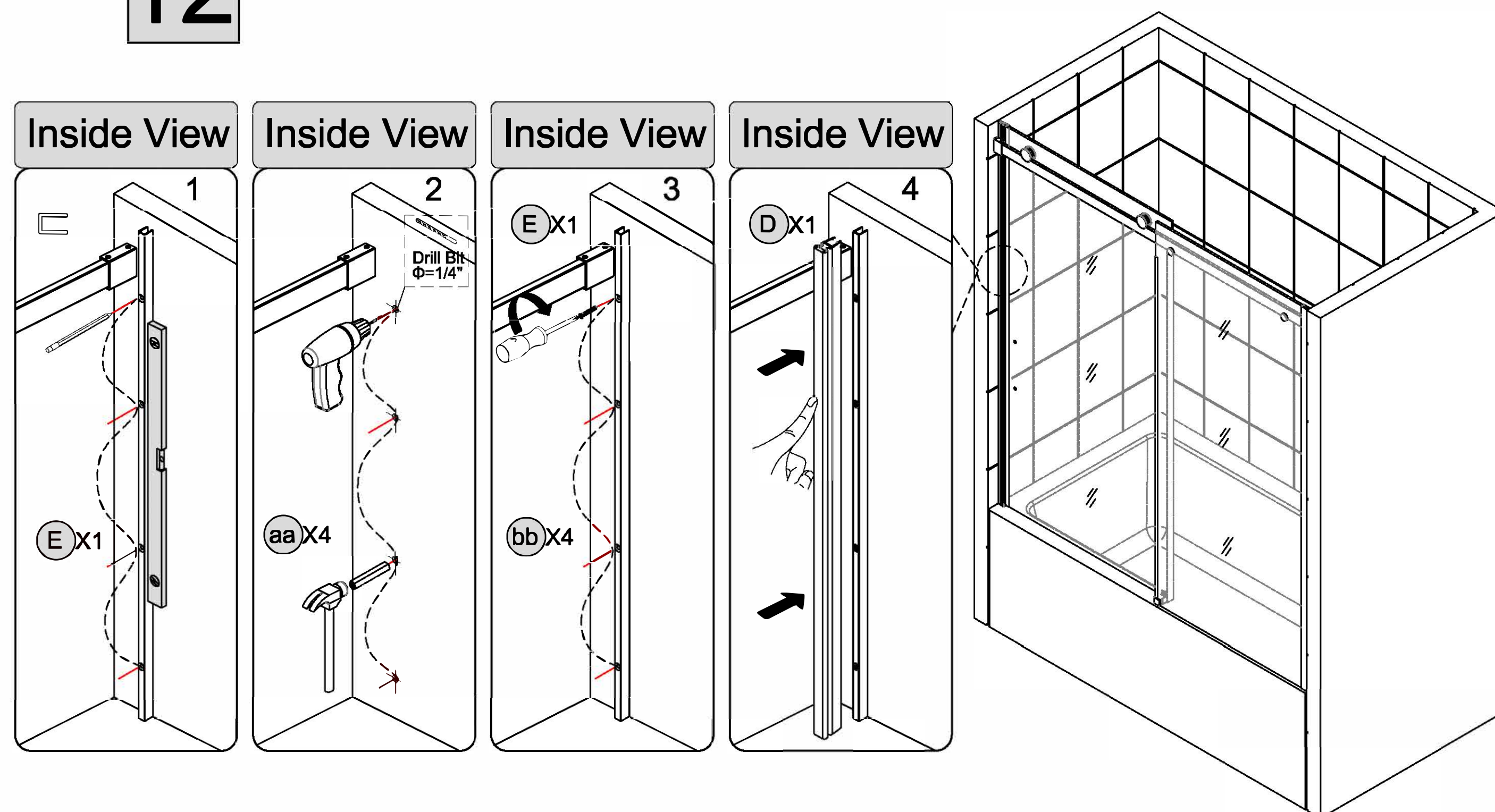


9

11 Determine the C & D position

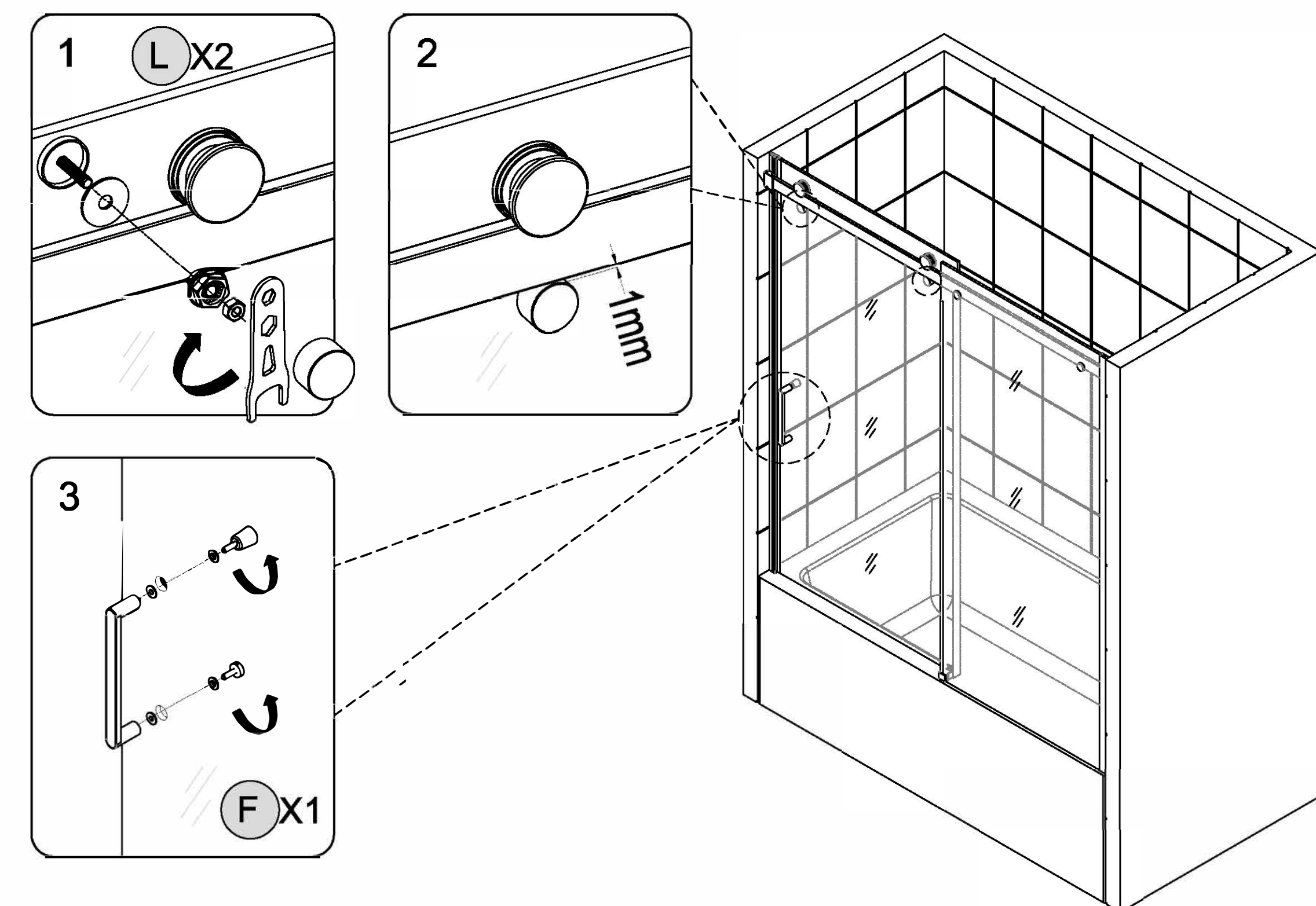


12 U channel-1 Installation



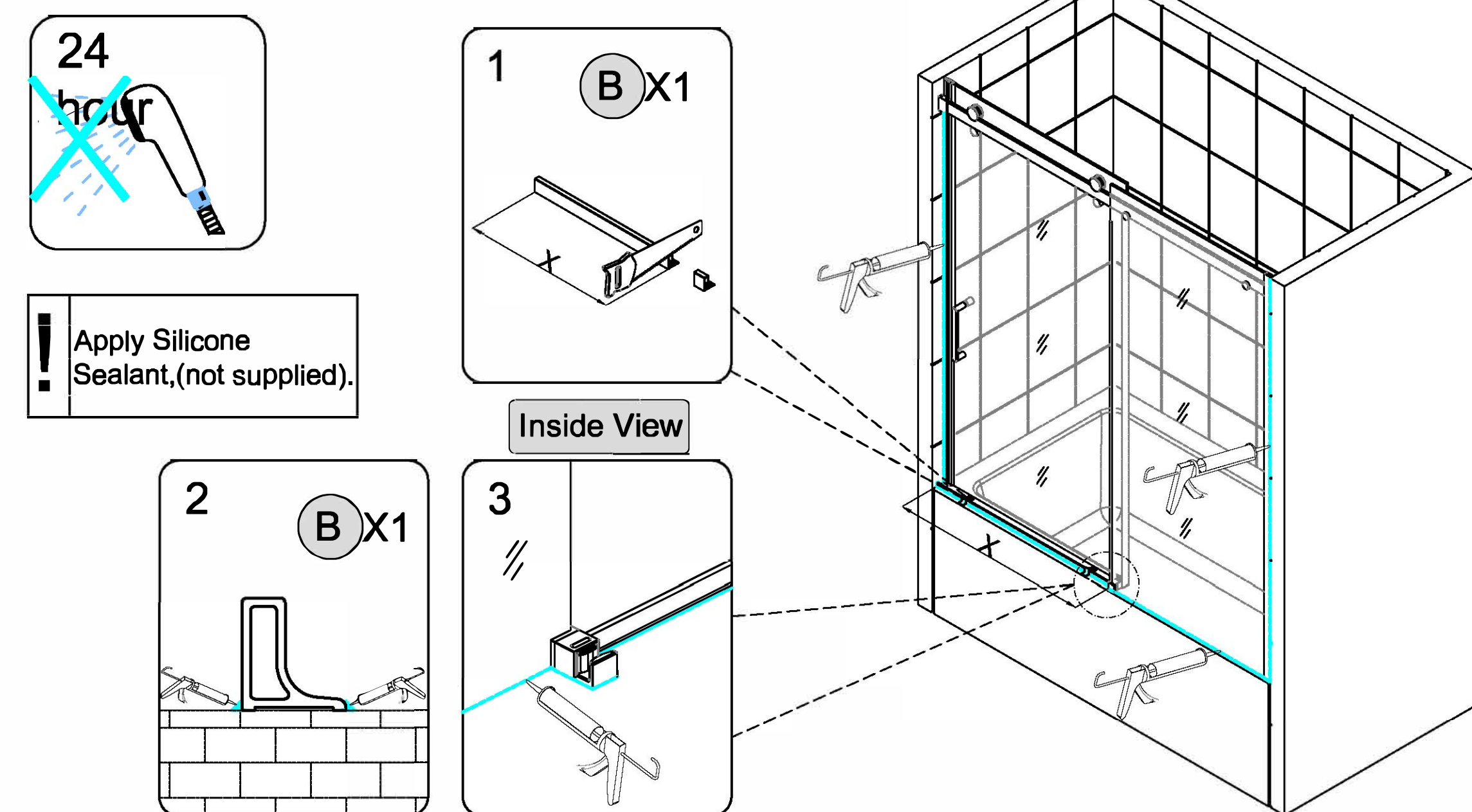
10

13 Anti-Jump Assembly & Handle Installation



14 SEALING

Ensure that the Shower door closes tightly and opens smoothly.
Apply a good quality silicone sealant along the wall Jamb(C) and Water seal (B) .
 Allow 24 hours for silicone to dry before use.
 Measure "X" and cut the Water seal(B) same length as "X".



11