

INTEGRATED DISHWASHER

PLANNING GUIDE

24" Series 7 Integrated Dishwasher | DW24U2I3

FISHER & PAYKEL



INTRODUCTION

This comprehensive planning guide provides you with the framework and tools to achieve your desired design outcome with Fisher & Paykel appliances. In this guide, you will find a range of conceptual, detailed, and dimensional product information to bring your ideas to life and create spaces that truly reflect your vision.

CONTENTS

CONCEPT DESIGN ✖

SPECIFICATION GUIDE

Product Features	
Product Specifications	5
Model Comparison DW24U6I1 DW24U2I3	6

High-level product information for the initial stages of conceptualising and refining your design.

SUPPORT

For additional design planning and installation support please contact the Fisher & Paykel design support team.
designsupport@fisherpaykel.com

DEVELOPED AND DETAILED DESIGN ✖

Detailed information, including product specs and dimensions, to support you in the advanced design stages.

NOTES

The models shown in this Planning Guide may not be available in all markets and are subject to change at any time. Refer to to our website fisherpaykel.com for the latest document version. Product specifications may vary from those shown. This Planning Guide should not be used as installation guidance for any product. Specific installation guidance will be available with the product on delivery and on our website.

DETAILED DESIGN PAGE

SPECIFICATION GUIDE

OVERVIEW

ADA-compliant for lower height installations, this integrated model offers quiet performance and flexible loading for up to 16 place settings. At the end of the cycle, the door automatically opens to release steam, while AirCurtain technology creates a protective barrier to help shield surrounding cabinetry. With simple installation, SmarHQT[™] connectivity, and panel-ready styling, it's ideal for modern kitchens.



FEATURES

- ① ADA-compliant design suited to lower bench heights and accessible installations
- ② Quiet operation supports open-plan and minimal kitchen environments
- ③ Panel-ready design enables seamless integration with surrounding cabinetry
- ④ Fits up to 16 place settings with flexible racks and third rack configuration
- ⑤ Straightforward installation, with simple panel alignment and specifications
- ⑥ Recognized as Energy Star Most Efficient
- ⑦ Adjustable middle rack and foldable, pitch-adjustable tines for versatile loading
- ⑧ Auto door open at cycle end for steam release and efficient drying
- ⑨ AirCurtain technology protects cabinetry by directing steam away from the bench
- ⑩ Wi-Fi enabled for remote monitoring and control via SmarHQT[™] app

PRODUCT OVERVIEW

DW24U2I3
Series 7, Integrated Dishwasher

ACCESSORIES

- ADDW24PX
Door panel for Integrated Dishwasher
- AHD5-OBDD-60S
Contemporary Square Fine Handle, 24"
- AHS-OBDD-60S
Contemporary Round Handle, 24"
- AHP3-DWDD-SX
Professional Round Flush Handle Stainless Steel, 24"
- AHP3DDDW24DC
Professional Round Flush Dark Copper Handle, 24"
- AHP3DDDW24BA
Professional Round Flush P3 Brass Handle, 24"
- AHCL-DDDW-24X
Classic Round Handle Kit, 24"

The models shown in this Planning Guide may not be available in all markets and are subject to change at any time. Product specifications may vary from those shown. This Planning Guide should not be used as installation guidance for any product. Further information is required to safely and correctly install the products featured here. Specific installation guidance will be available with the product on delivery and on our website fisherpaykel.com

SPECIFICATIONS

Model Number

DW24U2I3 Series 7, Integrated Dishwasher

Weight

Packaged 124 lb (56 kg)
Unpackaged 108 lb (49 kg)

Electrical

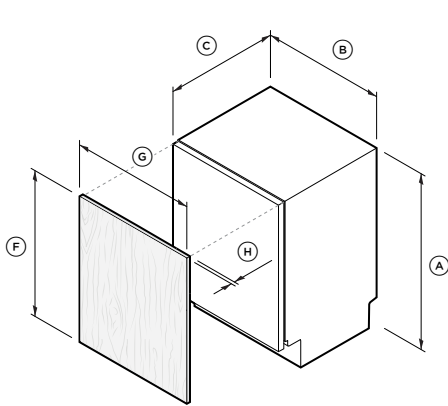
Supply 120 V, 60 Hz
Service 10 A
Connection No power cord supplied

Plumbing

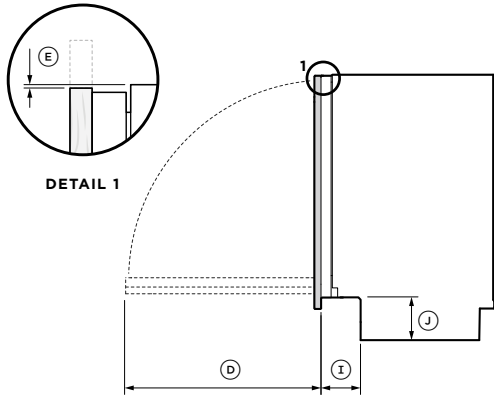
Pressure 30 kPa - 1000 kPa
Connection 3/4" BSP inlet valve

Note: Electrical and Plumbing connections to be made in adjacent cabinets either side of dishwasher.

PRODUCT DIMENSIONS



ISOMETRIC VIEW

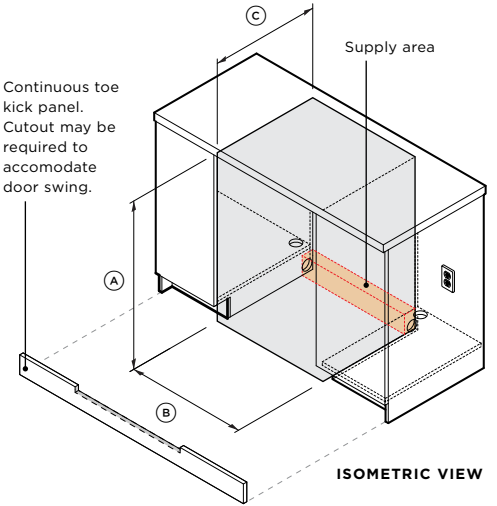


SIDE VIEW

Product Dimensions		inch	mm
A	Height of dishwasher	32 3/8 - 34 5/8	822 - 879
B	Width of dishwasher	23 1/2	597
C	Depth of dishwasher *	22 13/16	554
D	Depth of door opening *	25 3/16	639
E	Height from top of chassis to top of custom panel or accessory panel	1/8	3
F	Height of door panel - custom panel ** - accessory door panel (ADDW24PX)	26 11/16 28 1/4	680 - 754 717
G	Width of door panel - custom door panel minimum - accessory door panel (ADDW24PX)	23 7/16 23 7/16	595 595
H	Thickness of door panel - custom panel - accessory door panel (ADDW24PX)	5/8 - 1 3/4	16 - 25 19
I	Depth of toe kick recess	4 9/16	116
J	Height of toe kick recess	5 1/8 - 7 3/8	130 - 187
Maximum weight of custom door panel including handle		9 - 20 lb	4 - 9 kg

* excludes front panel and handle
** custom panel can be extended upwards in addition to stated dimension. Cabinetry clearances must be met.

CABINETRY DIMENSIONS



Cabinetry Dimensions		inch	mm
A	Height of cavity - minimum - maximum	32 3/8 34 5/8	822 879
B	Minimum width of cavity	23 5/8	600
C	Minimum depth of cavity *	22 7/8	580
Minimum clearance between dishwasher front panel and adjacent cabinetry		1/16	2
Supply area - height - depth		4 2	102 51

* excludes front panel

The models shown in this Planning Guide may not be available in all markets and are subject to change at any time. Product specifications may vary from those shown. This Planning Guide should not be used as installation guidance for any product. Further information is required to safely and correctly install the products featured here. Specific installation guidance will be available with the product on delivery and on our website fisherpaykel.com

