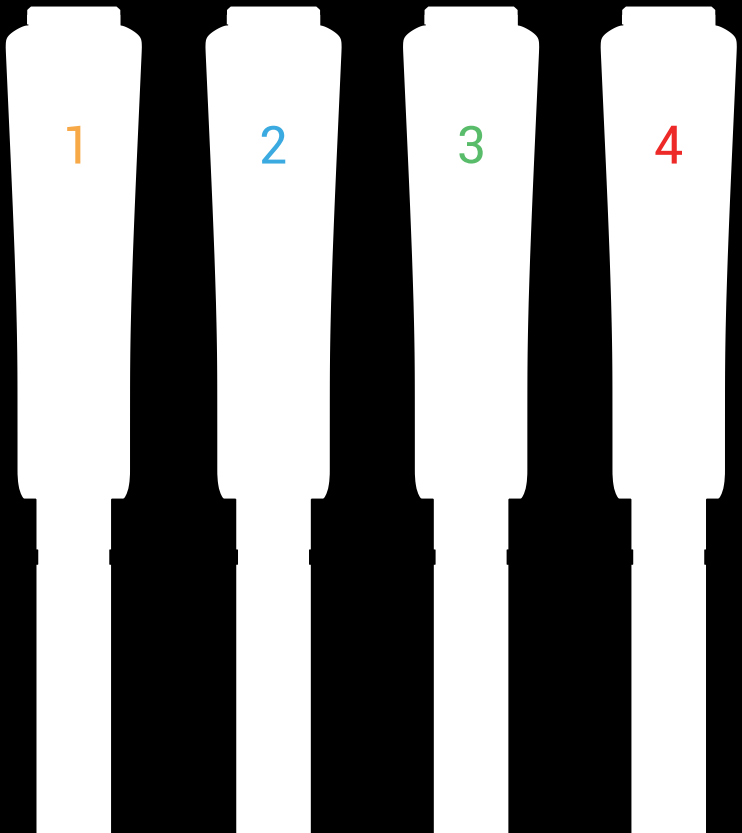


INKBIRD

INT-14-BW

Three -Mode Wireless BBQ Thermometer
Quick Start Guide



Operation

Buttons Description

① Power Switch



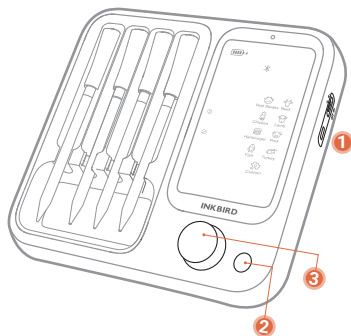
- **Position 1:**
Turn off the device.



- **Position 2:** Turn on the device and enable the buzzer.



- **Position 3:** Turn on the device and disable the buzzer.



② Function Button

Mode Switch: Press and hold for **2 seconds** to switch the device mode between WiFi "📶", Bluetooth "📶", and Local mode "🏠". The default mode is WiFi.

Local Mode: When the device is in local mode "🏠", press and hold the knob button to enter menu setting, then press the **function button** to select a probe to set.

③ Knob Button

Force Reset

Press and hold the **knob button** for **15 seconds** to force reset the device.

Local Mode

- Press and hold the **knob button** for **3 seconds** to enter menu setting, then press and hold the **knob button** for **3 seconds** again to exit the setting.
- Rotate the knob button to select menu and doneness level, then press it to confirm your selection.
- Press the **knob button** after setting to switch the current temperature to the preset temperature. The current temperature will automatically resume in **5 seconds**.

Device Operating Guide

WiFi and Bluetooth Modes Operating Guide

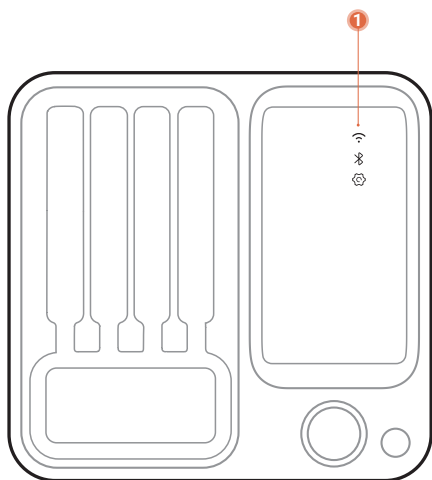
Before using this device,

please make sure that you have read the important safety information mentioned in this operating guide and that you will abide by the follow warnings during use.

① This device has three modes for use, WiFi "📶", Bluetooth "📶", and Local modes "🔧", and the default mode is WiFi.

② During use, please make sure that the distance between the probe and the base does NOT EXCEED 6 METERS (19.68 feet).

If there are obstacles in between, the distance should be shortened to maintain a stable connection.



②

≤ 6 m
Distance ≤ 6m

Operating Guide

1) Push the power switch to the position 2 to turn on the device. By default, the device is in WiFi mode. To switch to another mode, press and hold the function button for 2 seconds.

2) Prepare a smartphone with iOS 12 (or later) or Android 7.1 (or later) to download the INKBIRD App. Turn on Bluetooth and WiFi functions on your smartphone, allow the app to access your phone's location information, then follow the app instructions to complete the connection.



3) Take out a probe, select the corresponding number on the app, choose a menu and desired doneness level, and insert the probe into the center of the food, making sure it goes beyond the safe cooking line.

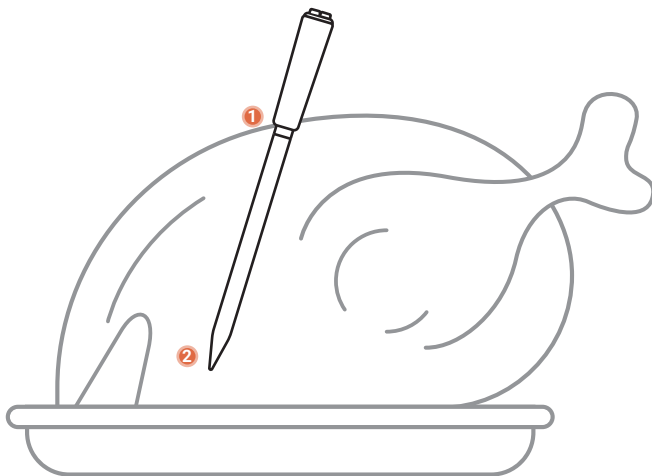
4) Once the temperature reaches the target point, both the smartphone app and thermometer will alert you to enjoy your delicious food. To stop the alarm, you can either operate the app or press the function/knob button on the device.

1

Insert into the meat and beyond the safe line.

2

Keep probe tip unexposed.



Local Mode Description

The local mode can be used anywhere the Bluetooth or WiFi signal is not good and without having to install an application or register and log in to an app. This product is easy to use, stable and reliable and will help you cook anytime.

Local Mode Operating Guide

- Push the power switch to the position 2 to turn on the device.
- Press and hold the function button for 2 seconds to switch to Bluetooth mode, then press and hold again for 2 seconds to switch to Local mode.
- Press and hold the knob button for 3 seconds to enter menu setting, then press the function button to switch to any probe you want to use to set it. (If you make a mistake, press and hold the knob button for 3 seconds to exit the setting.)
- Take out the probe you want to use and insert it into the center of the food, making sure that the probe is fully inserted and that the probe tip is not exposed.
- Rotate the knob button to select the desired menu and press it to confirm. Then select the desired doneness level from the menu and press the knob button to confirm and start cooking.

NOTE

- The distance between the probe and the base should NOT EXCEED 6 METERS (19.68 feet). If there are obstacles in between, the distance should be shortened to maintain a stable connection.
- If you want to view the preset temperature during cooking, press the knob button to display it on the temperature area. And it will automatically return to show the current temperature in 5 seconds.

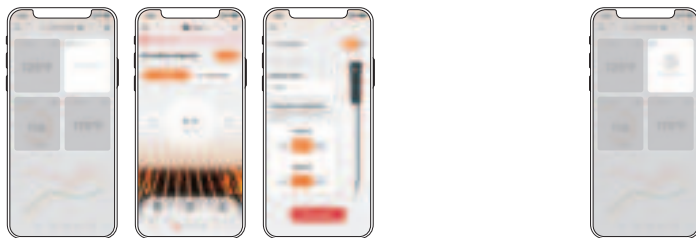
Screen Brightness Adjustment

Enter the device home page on the app, click the setting icon and find the brightness adjustment bar, then set the brightness level to your preference. The default brightness level is 80% and the recommended lowest brightness level is 30%.

Replace A Probe

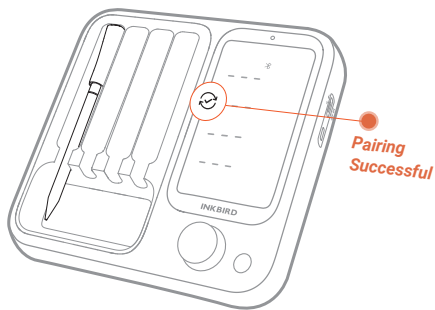
NOTE If a probe in this device needs to be replaced, you should switch the device to Bluetooth mode before performing the following operation:

⚠ Make sure that the charging base is in Bluetooth mode " ⌘ ", then connect it to your smartphone.



1. Open the application, click on the corresponding number to enter the probe page, then go to the settings to remove the probe and confirm.

2. The application will automatically return to the device home page. Click on the " ⊕ " in the probe number area to start pairing.



3. Follow the app instructions, put the new, unpaired probe in the charging position of the base, and start charging. The app will show the pairing interface, while the display area of the corresponding number on the device will show the pairing icon " ⊕ ". Wait for the device to pair automatically, and you can use the probe after the device tells you that the pairing is successful