

RESPONSE

2K Dash Camera with GPS



QV3880

Instruction Manual

CONTENTS

Before First Use	2
Safety	3
Box Contents	3
Product Diagram	4
In Vehicle Installation	5
Rear Camera Installation	7
Special Function Description	8
Standard Operations	9
Setup Menu	10
Camera Settings Menu	11
Operation Instructions	12
Time and Date Settings	12
Troubleshooting	13
Specifications	15
Warranty Information	16

BEFORE FIRST USE

- Prior to using your product, please read all the safety and operating instructions thoroughly. Please ensure you follow the steps below before using the product. We recommend you keep the original packaging for storing the product when not in use.
- Find a safe and convenient place to keep this instruction manual for future reference.
- Unpack the product but keep all packaging materials until you have made sure your new product is undamaged and in good working order. Ensure you have all accessories listed in this manual.

SAFETY

- To prevent damage it is recommended to store the unit out of sunlight when not in use.
- Do not leave the dash camera exposed to heat or in a high temperature environment such as an unattended car in direct sunlight.
- Do not immerse or expose the dash camera to rain, water, humidity or other liquids.
- The dash camera is designed for use indoors/inside the vehicle
- Before using the dash camera it is recommended to check your local and state laws where you intend to use the device. Laws may prohibit or restrict where/ what can be placed on your windshield.
- Do not dispose of in fire. Check with local authorities on the disposal of lithium battery products

BOX CONTENTS



1 x Dash Camera



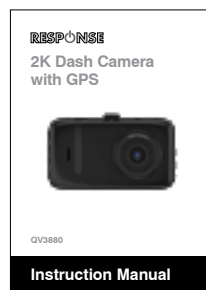
1 x Rear Camera



1x 12v Power Adapter

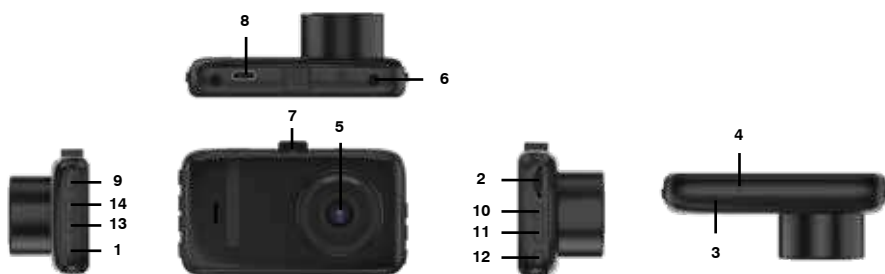


1x GPS Module



1 x User Manual

PRODUCT DIAGRAM



Feature		Description
1	Power button	Long press to turn on, long press to turn off, and short press to turn off the screen in standby mode.
2	Micro SD Slot	Supports Micro SD Cards up to 128GB Max. Due to multiple channels it is recommended to use a Class 10 High Speed Micro SD Card
3	Reset	If the Dash camera crashes/freezes this can manually reset the camera
4	Microphone	
5	Front Camera	Align towards the windscreen
6	Rear camera port	Connect the rear camera to this port
7	Bracket openings	Install the slot of the bracket
8	Power interface	USB-C Port for power supply
9	OK Key	Record confirmation button. In camera mode, short press this button to start recording, then short press again to stop recording. In playback mode and menu mode, it is the confirmation button
10	Up Key	Select the up function key in the menu options; In recording mode, this key is used to switch the screen
11	Menu Keys	Long press this key to access the function settings menu; Short pressing this key during the recording process will lock the current video file and save it as an undeletable file Short press this button to switch between recording, taking photos, and playback modes
12	Down arrow	Select the down function key in the menu options; Short press this button during standby or recording to turn on/off the mic.
13	Lock Key	In the video mode, if you want to protect the current video from being overwritten, press the Lock key to activate the emergency lock function. At this time, the lock file icon will appear in the upper left corner of the screen, and the current entire segment at the time of the accident will be saved as a special image, which will not be overwritten.
14	Mode Key	In the standby state, press [Mode] to enter the camera interface, video playback interface and video recording interface, and press [Mode] repeatedly to exit

IN VEHICLE INSTALLATION

1. Insert MicroSD Card

Insert a suitable MicroSD card (Class 10) in to the dash camera, taking care that the gold contacts are facing towards the LCD screen side. Push the memory card until it clicks into place.



NOTE: Use the edge of a small object to push the memory card in place if required. Take care that card has 'clicked' into place, a second push inwards will release the memory card. Do not remove or insert the memory card when the dash camera is turned on. This may damage the memory card.

2. Attach the mount to the dash camera

Place the mount in space on the dash camera.
(refer to Fig. 2)

3. Mount the GPS Module and connect the USB - C to the Dash Camera

4. Connect car power cable

Connect the supplied power cable to the GPS Module's USB Port.

5. Plug the power cable into the 12-24VDC outlet of your vehicle

The dash camera will automatically power on and start recording once power is available. In some vehicles this will be when connections are made, for others the dash camera will power on once the ignition has been turned on. Route the power cable around the windshield to the 12-24VDC socket, ensuring that your view is not obstructed (refer Fig. 4), and that the cable is not a distraction.

NOTE: Do NOT wire the dash camera directly to a 12VDC supply by cutting the cigarette plug off the end of the cable, or permanent damage will result



Fig. 2

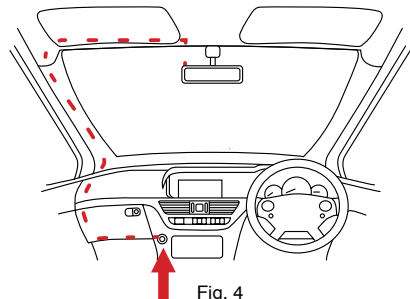


Fig. 4

5. Attach mount to windscreen

Attach the mount to the windscreen

6. Straighten the dash camera

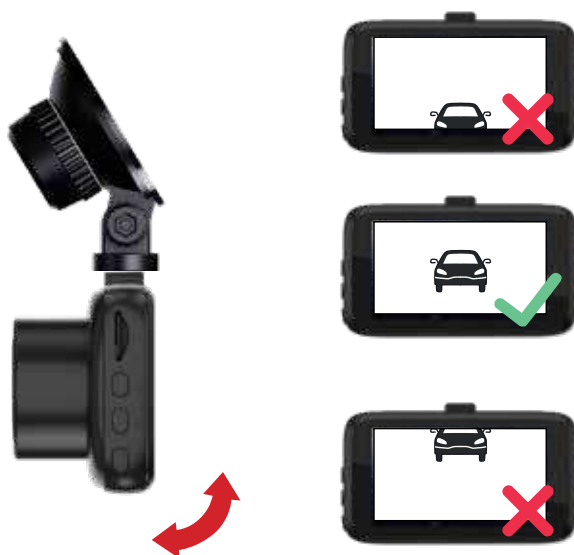
Ensure that the dash camera is horizontal and faces straight out of the windscreen. Ensure that objects on the dash camera display appear level, and adjust as required.

7. Attach the dash camera to the windscreen

When you are satisfied with the placement and orientation of the dash camera, firmly place the mount on the windscreen.

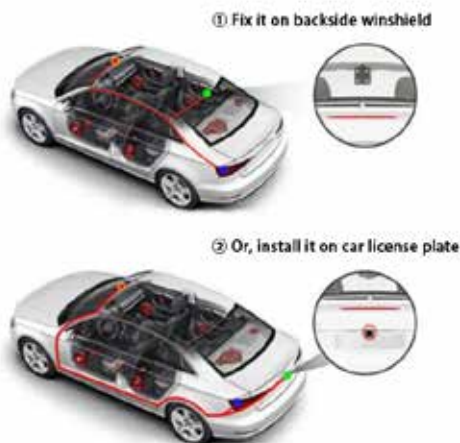
8. Adjusting the dash camera

With the mount attached to the windscreen, ensure that objects on the dash camera display are level and adjust as required. Ensure that the road ahead is at the centre of the image, in the central third of the display. If too much of the sky is visible it may risk underexposing details on the road; ensure that the road ahead is clearly visible on the dash camera display. Do NOT attempt to adjust the dash camera while driving.



REAR CAMERA INSTALLATION

The rear camera can be installed above the rear window or above the license plate as shown in the diagram below.



NOTE: Please note in running and concealing the cable you will need to be confident in adjusting or modifying areas of your car including internal roof linings, as well as any panels internal and external.

NOTE: Please ensure the unit is installed securely prior to operating your vehicle.

WARNING: Do not cut or modify the cable. Any modifications to the original products cable or housing may void your warranty.

SPECIAL FUNCTION DESCRIPTION

1. Automatic on/off

After connecting to the power supply, the camera will automatically start recording, and automatically save and shut down the recording when turned off;

2. Loop Recording

Automatic loop recordings set to 1, 3 or 5 minute files

3. Motion Detection

When in standby mode, if a moving object is detected a recording will begin. The camera will automatically stop recording and return to standby mode

4. G-Sensor

When the camera is subjected to fast changes to its gravity (G-Sensor), it will automatically turn the current video into a locked file, thereby preventing the file from being overwritten in a loop;

5. Parking Monitoring

In the shutdown state, when the machine is subjected to gravity induction, it will automatically start recording and lock the video (note that this function requires the machine battery to be charged)

6. One Click Lock Function

Short press the menu button during the recording process, and the machine will lock and save the current video as an undelible file.

STANDARD OPERATIONS

Start-up And Shutdown

Long press the power button to start once, long press the power button is to shut down;

NOTE: The dash camera will automatically shut down when the battery voltage is low.

Video Mode

Short press the MENU key, switch to the video mode, and display the video icon in the upper left corner of the screen;

Short press the OK button to start the video, the video icon will appear flash red dot, indicating the video work;

Photo Mode

Short press the MENU key to switch to photo mode, and the photo icon will be displayed in the upper left corner of the screen; Short press the OK button to take a photo. When taking a photo, there will be a click sound, indicating that the photo is complete.

Video/photo playback

Short press the MENU key to switch to playback mode, and the playback icon will be displayed in the upper left corner of the screen;

Short press the “Up” key to select the file downwards, and during video playback, short press to fast forward the video playback;

Short press the “Up” key to select the file upwards, and during video playback, short press to quickly rewind the video playback;

Short press the OK key to play the selected video file;

Menu Settings

Long press the menu button to enter the video menu setting state; short press the menu button again to switch to the system menu setting state, and then short press the menu button to exit the setting state.

In the outgoing settings item, By short press the “Up” and “Down” key you can choose to switch up and down in the settings sub item. Short press the OK key to enter the settings sub item;

Time setting

Long press the menu key to enter the setting state, short press the menu key to enter the setting menu, select the date time option through the key, Short press the OK key to enter, short press the menu key, you can switch between year / month / day / hour / minute / second, by the “Up” and “Down” key to adjust the required value, press OK to confirm the modification, and press the menu key to exit the option.

SETUP MENU

Video resolution:

Video recording resolution 2K 2160*1440, FHD 1920*1080

Loop recording:

Each video recording can be set from 1 minute, 3 minutes, or 5 minutes, when turned off, the recorded video will be automatically overwritten;

Exposure compensation:

Used to adjust the brightness of the image. When the exposure is too high, it will cause the license plate to be too bright. The default is set to 0.

Motion detection:

When not already recording, the dash camera will detect whether there is a moving object and automatically start recording if a moving object is found.

Recording audio:

You can choose whether to record sound or not.

Date Stamp:

When selected, the playback video screen displays a time and date watermark.

G-Sensor

This feature option has high, medium, and low settings.

When the vehicle experiences an impact while driving, the image/video file will be locked. (This setting is set to low as default.)

Parking monitoring:

Used when ignition is off and the battery is charged. When the device detects a vibration it will automatically switch on and record 30 seconds of footage before shutting down again. If the battery is not charged this will not function.

CAMERA SETTINGS MENU

Photo:

Allows you to set single or continuous photo settings with 2, 5 or 10 second timings.

Photo resolution:

The camera resolution can be selected as 1M or 2M.

Continuous shooting function:

When selected to open, 3 consecutive shots can be set.

Image quality:

Can choose high quality, standard, economy.

Anti-shake:

Option on / off;

Date label:

When selected, the playback displays the time and date.

OPERATION INSTRUCTIONS

1. Power on and off

Long press the power button to turn on the device, and the power indicator light will light up when the device is turned on; Press and hold the power button to turn off the device after turning it on, and this light will turn off;

2. Camera mode

Camera mode, short press the OK button to start recording. When recording, the red dot on the screen will start flashing, and the blue indicator light will start flashing, entering the recording mode;

3. Video/photo playback

Short press the menu button to enter file browsing mode, select the camera file to view and play the videos and images inside;

4. Menu settings

Long press the menu button in standby mode to access the settings menu; By short pressing the up or down keys, you can cycle up and down through various settings; Select the setting item that needs to be changed, and enter the change by short pressing the OK key;

5. Exit the settings menu

Short press the menu button to exit the setting state;

TIME AND DATE SETTINGS

In standby mode, long press the menu key to enter the settings option, short press the up/down keys to select the time and date setting option, short press the OK key to enter, short press the OK key to switch between year/month/day/hour/minute/second, adjust the desired value by using the up/down keys, short press the OK key to confirm modification and exit the time setting.

NOTE: If the product crashes due to improper operation, you can press the reset button and restart it to restore normal operation.

TROUBLESHOOTING

Problem	Solution
Storage	
Unable to take photos or videos	Check if the Micro SD card has sufficient space and is locked.
When recording, it will automatically stop	Due to the huge amount of high-definition video data, please use a high-speed Micro SD card compatible with SDHC. It is recommended to use a Class10 or higher high-speed card;
When playing back images and videos, there is a "file error" prompt	An error occurred while storing data on the Micro SD card, resulting in incomplete files. Please use the camera's "format" function to reformat the Micro SD card.
I can only record a few minutes of video on my MicroSD card	Change the recording size (Video Length function) to a smaller size. Increase the size of the MicroSD card. Max 128GB.
I get the message "SD Card Error" on screen	The SD card has become unusable by the dash camera. Back up useful files to your PC and then Format your SD card from within the dash camera setup menu
I get the message "Card Full" on screen	The SD card has become full as there are too many protected files which cannot be deleted to allow for further recording to take place. Transfer useful files to your PC and delete unnecessary files, or Format the SD card from within the dash camera setup menu.
Image	
The captured image is not clear	Please check the lens for any dirt or finger marks and wipe the lens clean before shooting.
When shooting scenes such as the sky and water, the image is very dark	In high contrast scenes, the automatic exposure function of the camera can be affected, this can be corrected by adjusting the "EV" value in the machine settings menu.
Under cloudy days and indoor light sources, the color performance is not perfect enough	Please check if the machine's "white balance" function is set to automatic.
Horizontal stripe interference in the image	This is caused by setting the wrong 'light source frequency'. Please set it to '50Hz' or '60Hz' based on the local power supply frequency.
System Freeze/Crash	After the machine crashes, please briefly press the reset button to restore and restart.
Power	
My dash camera shuts down by itself after a while	Either the battery has gone flat, there is no power to the dash camera and the Auto Power Off period has been triggered or Parking Mode has been turned on and no vehicle movement has been detected for 5 minutes.
The screen blanks after a few minutes upon my dash camera	The screen saver is set to ON. Change settings to OFF if required. Default setting is OFF

Problem	Solution
Playback	
Video Files cannot be played on my computer	The video files from the dash camera are in .MP4 format and may not be compatible with your PC if suitable playback software is not installed
Video File playback is jumpy	Remove the SD card and format to remove non-contiguous files. For best recording use a branded class 10 type (48MB/s) or UHS type 1 micro SD card of 8 to 128GB recommended size. PC may not be sufficient for the playback task, try a different PC. Copy the recorded video files onto the PC / Mac for playback directly rather than use the dash camera as a card reader, as the USB system on your PC may be too slow for HD video playback.
The sound is not synchronised with video during playback	The Codecs upon your PC may not be compatible or the latest standard.
Video has no sound	Ensure that 'Record Audio' setting is turned ON within the Video Menu
I can't delete files on my SD card within the dash camera	Check to see if these files are 'protected'. If so please follow instructions to 'un-protect'.
The battery will not charge	Ensure the dash camera is connected to a reliable power source and that the supplied Car Power Cable is being used, with the blue LED lit
The battery only lasts 30 seconds	The battery will only receive charge when the dash camera is connected to a power source, Charging takes approximately 2 hours and a full charge is indicated when the blue LED on the dash camera goes out. To charge, take the dash camera indoors and charge it for 2 hours; once fully charged, check to see if the problem persists. If it persists, the car power supply may be causing the issue
The battery only lasts 10 - 15 minutes	This is normal, the battery design allows the 'Auto Power Off' feature to function in event of power loss within the vehicle. It is not intended as an alternative power source to replace the supplied car adaptor.
Other	
I have turned on 'Parking Mode' and now can't stop the recording	The dash camera will start a recording whenever motion is detected. To turn off Parking Mode firstly shutdown the dash camera and remove the SD card, this will avoid recording being activated accidentally. Switch the dash camera On and within the Setup Menu, turn off the 'Parking Mode'.
When I press the Menu button nothing happens	This is normal during recording. Stop the recording before pressing the MENU button. If recording re-starts before you can press MENU, then see the Parking Mode section above.
My Camera feels warm when it is operating	It is normal for the camera to feel warm during typical use, especially when it's recording high definition video.
Unresolved Issues	Reset the dash camera to the default settings within the Setup Menu and try again. Should the problem persist call your local support centre.

SPECIFICATIONS

FOV	130°
Video Resolution	2160 x 1440 @ 30FPS 1920 x 1080 @ 30FPS
Channels	1
G-Sensor	True
GPS	True – Speed and Location
Storage	Micro SD 128GB Max
Screen	3.0" IPS
Connection	USB Type-C
Battery	200mAH Li-Po
Dimensions	90 (W) x 54 (H) x 35mm (D)
Weight	57g

WARRANTY INFORMATION

Our product is guaranteed to be free from manufacturing defects for a period of 12 Months.

If your product becomes defective during this period, Electus Distribution will repair, replace, or refund where a product is faulty; or not fit for intended purpose.

This warranty will not cover modified product; misuse or abuse of the product contrary to user instructions or packaging label; change of mind and normal wear and tear.

Our goods come with guarantees that cannot be excluded under the Australian Consumer Law. You are entitled to a replacement or refund for a major failure and for compensation for any other reasonably foreseeable loss or damage. You are also entitled to have the goods repaired or replaced if the goods fail to be of acceptable quality and failure does not amount to a major failure.

To claim warranty, please contact the place of purchase. You will need to show receipt or other proof of purchase. Additional information may be required to process your claim.

Any expenses relating to the return of your product to the store will normally have to be paid by you.

The benefits to the customer given by this warranty are in addition to other rights and remedies of the Australian Consumer Law in relation to the goods or services to which this warranty relates.

This warranty is provided by:

Electus Distribution

Address 46 Eastern Creek Drive, Eastern Creek NSW 2766

Ph. 1300 738 555