

PHILIPS

LCD monitor with
USB-C

Business monitor

3000 series

31.5" (80 cm)

2560 x 1440 (Quad HD)

32B2U3601



Redefining workflow productivity

Speed through daily tasks in comfort with this monitor's SoftBlue technology, Quad HD resolution and 100 Hz refresh rate. Additionally, SmartErgoBase adds an ergonomic touch to the monitor's feature list.

Designed for the way you work

- Built-in stereo speakers for multimedia
- Smart Link Sync: for uniform daisy-chained displays
- SmartErgoBase enables user-friendly ergonomic adjustments
- Eyesafe-certified blue light protection and colour accuracy
- Less eye fatigue with Flicker-Free technology
- SoftBlue Technology: for comfortable viewing

Single cable USB-C connection

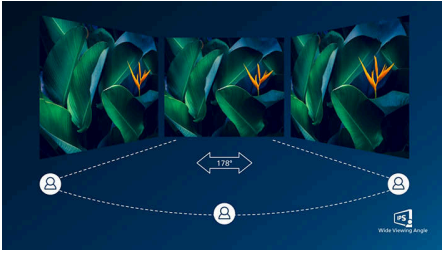
- RJ-45 to USB-C gives easy network connection with security
- USB 3.2 high-speed data transfer

Superb Picture Quality

- 100 Hz refresh rates for ultra-smooth images
- IPS LED wide view technology for image and colour accuracy
- Crystal clear images with Quad HD 2560 x 1440 pixels

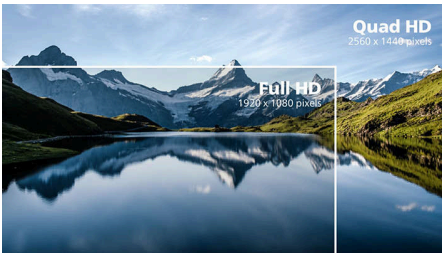
Highlights

IPS technology



IPS displays use an advanced technology that gives you extra-wide viewing angles of 178/178 degrees, making it possible to view the display from almost any angle. Unlike standard TN panels, IPS displays give you remarkably crisp images with vivid colours, making them ideal not only for Photos, movies and web browsing, but also for professional applications that demand colour accuracy and consistent brightness at all times.

CrystalClear images



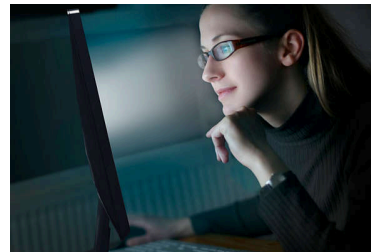
These Philips screens deliver CrystalClear, Quad HD 2560 x 1440 or 2560 x 1080 pixel images. Utilising high performance panels with a high-density pixel count enabled by high bandwidth sources, these new displays will make your images and graphics come alive. Whether you are a demanding professional requiring extremely detailed information for CAD-CAM solutions using 3D graphic applications, or a financial wizard working on huge spreadsheets, Philips displays will give you CrystalClear images.

100 Hz fast refresh



This Philips display refreshes the screen image up to 100 times per second which makes this monitor much faster than a standard display. With a 100 Hz frame rate, gamers are able to find those critical images on the screen that show enemy movement in an ultra-smooth motion so that they are easily targetable.

SoftBlue Technology



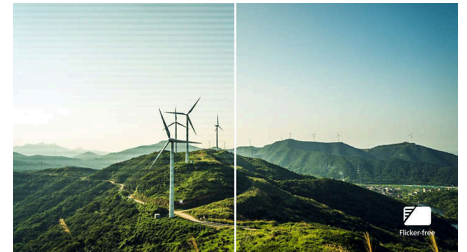
SoftBlue LED technology, combined with the monitor's low blue light panel, is an effective solution for reducing the adverse health effects caused by high exposure to blue light. In this monitor's panel, the ratio of light is reduced by nearly 50 percent, while the SoftBlue LED technology works simultaneously by reducing harmful blue light rays emitted from the screen. Furthermore, the SoftBlue LED technology is tested and certified by TUV Rheinland Eyesafe® for its effectiveness in reducing blue light emissions.

Built-in stereo speakers



A pair of high-quality stereo speakers built into a display device. They may be visible front firing, or invisible down firing, top firing, rear firing etc. depending on model and design.

Flicker-Free technology



Due to the way brightness is controlled on LED-backlit screens, some users experience flicker on their screen which causes eye fatigue. Philips Flicker-Free technology applies a new solution to regulate brightness and reduce flicker for more comfortable viewing.

Smart Link Sync



Easily create a seamless multi-monitor workspace with Smart Link Sync, designed to automatically align display settings across daisy-chained monitors. Whether you're designing, presenting or multitasking, enjoy consistent brightness and colour without manual tweaks. Choose from OSD Sync or Light Sync modes (Low, Mid or High) on the primary monitor to match your environment. For identical monitors, any mode ensures uniform visuals; for mixed models, Light Sync intelligently adjusts luminance for a balanced, professional look across screens.



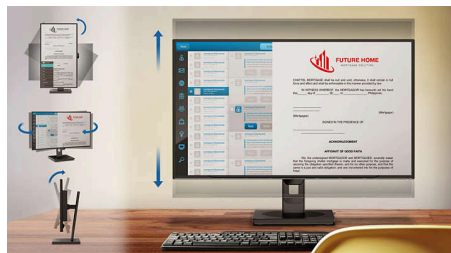
Highlights

TUV Rheinland Eyesafe - RPF® 40



Philips display meets the TUV Rheinland Eyesafe® standard to truly protect you from long exposure to blue light. The always-on blue light filter not only helps reduce digital eye strain, but also guarantees colour integrity.

SmartErgoBase



The SmartErgoBase is a monitor base that delivers ergonomic display comfort and provides cable management. The base can swivel, tilt and rotate to various angles to ensure maximum comfort. The height-adjustable stand guarantees the optimal viewing level, reducing the physical strains of a long workday, while cable management reduces cable clutter and keeps the workspace neat and professional.

High-speed data transfer

USB 3.2 high-speed data transfer

USB-C Docking with RJ45



Simplify all peripherals from monitor to PC using one-cable docking USB Type-C connector, including networking, high-resolution video output from PC to monitor, and surfing on the Internet without an additional network cable, even without a LAN port on your notebook. RJ45 connection through USB-C offers a fast and secure connection when needed. Getting the fastest data speeds allows you to transfer data from a HDD to your PC faster than ever. Additionally, USB-C with power delivery can even enable you to power and charge your notebook from the monitor, eliminating the need for extra power cables.

Specifications

Picture/Display

Panel Size: 31.5 inch/80 cm
 Aspect ratio: 16:9
 LCD panel type: IPS technology
 Backlight type: W-LED system
 Pixel pitch: 0.2727 x 0.2727 mm
 Optimum resolution: 2560 x 1440 @ 60 Hz
 Brightness: 350 cd/m²
 Display colours: 1.07B (10 bits)
 Colour gamut (typical): NTSC area: 102%, sRGB area: 113%*
 Contrast ratio (typical): 1000:1
 SmartContrast: 50,000,000:1
 Response time (typical): 4 ms (Grey to Grey)*
 Viewing angle: 178° (H)/178° (V), @ C/R > 10
 Picture enhancement: SmartImage
 Maximum resolution: 2560 x 1440@100 Hz (HDMI/DP/USB-C)*
 Effective viewing area:
 698.112(H) x 392.688(V) mm
 Scanning Frequency: 30 kHz-150 kHz (H)/48-100 Hz (V)
 sRGB
 SoftBlue
 Flicker-free
 Pixel Density: 93 PPI
 Display Screen Coating: Anti-Glare, 3H, Haze 25%
 EasyRead
 Adaptive sync
 EyeSafe
 Smart Link Sync: When used as a primary or secondary monitor*

Connectivity

Signal Input: HDMI 2.0 x 1, DisplayPort 1.4 x 1, USB-C x 1 (upstream, DP Alt mode, data, PD)
 Sync Input: Separate Sync, Sync on Green
 Audio (In/Out): Audio out x 1
 RJ45: Ethernet LAN (10 M/100 M/1 G)
 Signal Output: DP out x 1
 HDCP: HDCP 1.4 (HDMI/DisplayPort/USB-C); HDCP 2.2 (HDMI/DisplayPort/USB-C)
 HBR3: Yes (DP, USB-C)
 USB Hub: USB3.2, Gen1, 5G, upstream: USB-C x 1 (Full); downstream: USB-A x 4 (with x 1 fast charge B.C 1.2)

Power Delivery

Max power delivery: Up to 90 W (5 V/3 A, 7 V/3 A, 9 V/3 A, 10 V/3 A, 12 V/3 A, 15 V/3 A, 20 V/3.25 A, 20 V/4.5 A)
 Version: USB PD version 3.0

Convenience

Built-in Speakers: 2 W x 2
 Plug and Play Compatibility: DDC/CI, Mac OS, sRGB, Windows 11/10
 User convenience: SmartImage, Input, Brightness, Menu, Power On/Off
 OSD Languages: Brazil Portuguese, Czech, Dutch, English, French, Finnish, German, Greek, Hungarian, Italian, Japanese, Korean, Portuguese, Polish, Russian, Simplified Chinese, Spanish, Swedish, Traditional Chinese, Turkish, Ukrainian
 Other convenience: Kensington lock, VESA mount (100 x 100 mm)
 Control software: SmartControl

Stand

Height adjustment: 180 mm
 Pivot: -/+90 degree
 Swivel: -/+ 180 degree
 Tilt: -5/30 degree

Power

ECO mode: 17.4 W (typ.)
 Power supply: Built-in, 100–240 VAC, 50–60 Hz
 Off mode: 0.3 W (typ.)
 On mode: 25.8 W (typ.) (Energy Star test method)
 Standby mode: 0.3 W (typ.)
 Power LED indicator: Operation - White, Standby mode - White (flashing)
 Energy Label Class: D

Dimensions

Packaging in mm (W x H x D):
 840 x 510 x 159 mm
 Product without stand (mm): 714 x 627 x 94 mm
 Product with stand (max height):
 714 x 627 x 299 mm

Weight

Product with packaging (kg): 13.70 kg
 Product with stand (kg): 9.87 kg
 Product without stand (kg): 7.07 kg

Operating conditions

Altitude: Operation: +12,000 ft (3658 m), Non-operation: +40,000 ft (12,192 m)
 Temperature range (operation): 0°C to 40 °C
 Relative humidity: 20%-80 %
 Temperature range (storage): -20°C to 60 °C
 MTBF (demonstrated): 70,000 hrs (excluded backlight)

Sustainability

Environmental and energy: EPEAT*, RoHS, Energy Star
 Post-consumer recycled plastic: 85%
 Recyclable packaging material: 100 %
 Specific Substances: Mercury free, PVC/BFR free housing

Compliance and standards

Regulatory Approvals: CB, CE Mark, ETL, CEC, TUV/GS, TUV Ergo, EAC ROHS, MEPS, UKCA, EMF, FCC, ICES-003, TCO Certified, TCO Certified Edge, EAC, eyesafe® CERTIFIED 2.0, TÜV Rheinland Low Blue Light (Hardware Solution)

Cabinet

Finish: Texture
 Foot: Black
 Front bezel: Black
 Rear cover: Black

What's in the box?

Cables: HDMI cable, DP cable, USB-C to C/C cable and Power cable
 Monitor with stand
 User Documentation



* Response time value equal to SmartResponse
 * sRGB Area based on CIE1931, NTSC Area based on CIE1976.
 * For Video transmission via USB-C, your Notebook/device must support USB-C DP Alt mode
 * Activities such as screen sharing and online streaming over the Internet can impact your network performance. Your hardware and network bandwidth will determine the overall audio and video quality.
 * For USB-C power and charging function, your Notebook/device must support USB-C standard Power Delivery specifications. Please check with your Notebook user manual or manufacturer for more details.
 * If your Ethernet connection seems slow, please enter the OSD menu and select USB 3.0 or a higher version that can support the LAN speed up to 1G.
 * When USB-C is set to High Resolution mode, the maximum supported resolution is 2560 x 1440@100 Hz.
 * EPEAT rating is valid only where Philips registers the product. Please visit <https://www.epeat.net/> for registration status in your country.
 * For Smart Link Sync to function properly, all daisy-chained monitors must be compatible with Smart Link.
 * The products and accessories listed on this leaflet may differ by country and region.
 * The monitor may look different from feature images.