

# NIIMBOT B3S Label Maker FAQ

## Question1:

How to make NIIMBOT B3S label machine get it to English setting?

## Answer1:

Press the Setup Button for 0.5 seconds to set the language function. Press and hold the choose button to switch to English.



### Question2:

How to put the label paper correctly? The labels are printed correctly.

### Answer2:

When placing the label paper, Note :

the top of the paper is facing up.

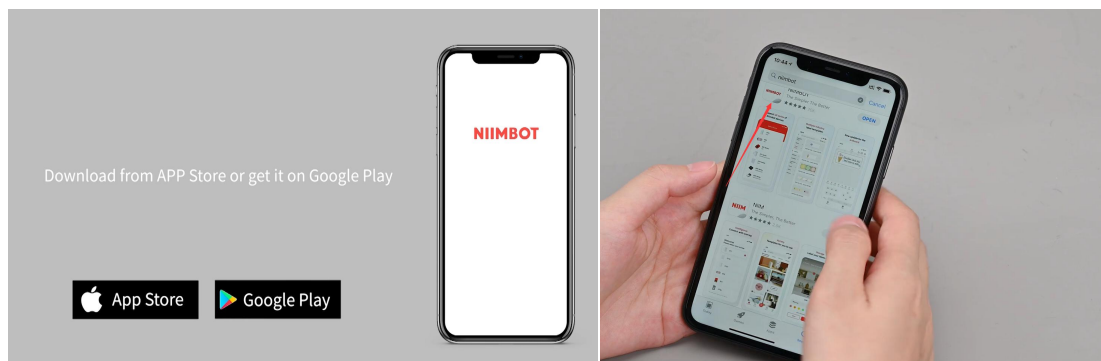
Otherwise, the label paper may not function properly. Please refer to the example image.



### Question3:

Where to download NIIMBOT APP?

**Answer3:** You need to download the NIIMBOT APP form APP Store or Google Play. Please refer to the example image.



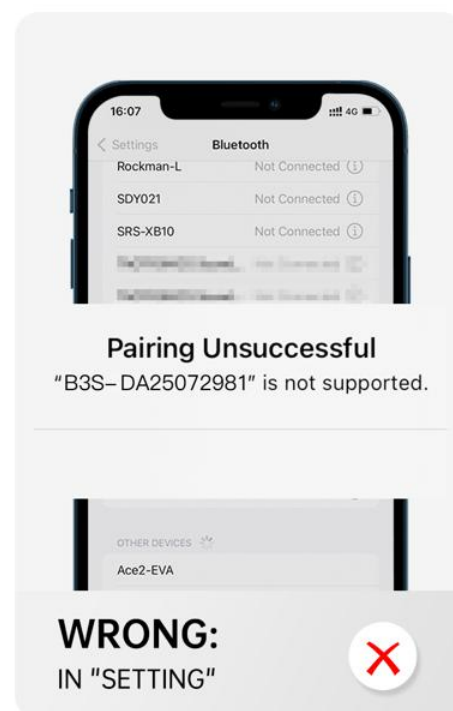
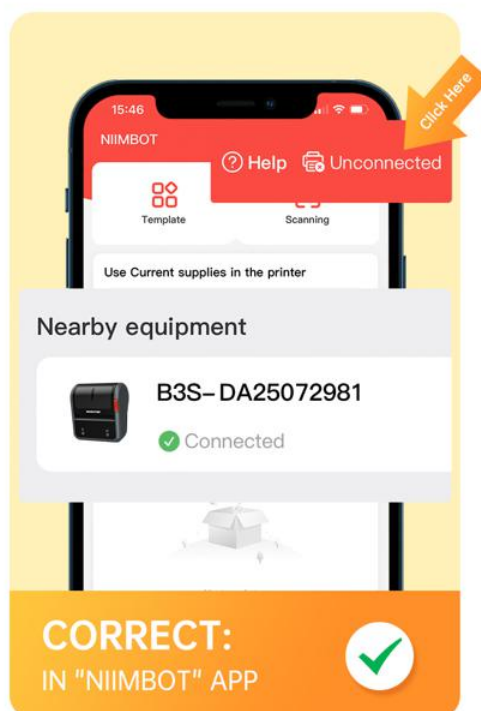
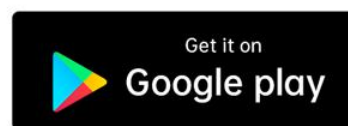
#### Question4:

How to connect to bluetooth? After turning on Bluetooth, the label maker machine cannot be found, what should I do?

#### Answer4:

First, you need to download the NIIMBOT APP, and then link the printer device in the NIIMBOT APP. Note: The Correct way, in "NIIMBOT" APP. The Wrong way, in "Setting". Please refer to the example image.

## How to Connect Bluetooth



### Question5:

What is the width of the label paper that can be used for the B3S? What is the function of the Baffle of the paper bin?

### Answer5:

Put label paper width 20-75mm(0.78-2.95inch) in the paper bin. The baffle has a lock button, which can be used to unlock/lock the bezel. This can fix the label paper in the paper bin and make the printing process more stable. Please refer to the example image.

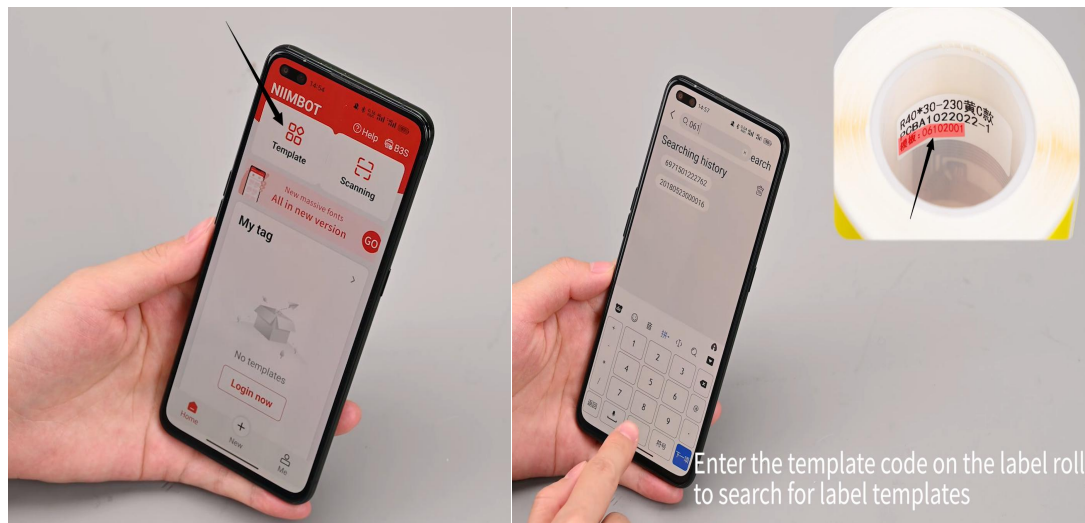


### Question6:

How to find the template of label paper?

### Answer6:

- ① Click on Industry Templates
- ② Enter the template number code on the label roll to search for label templates.



### Question7:

Can I use the NIIMBOT label maker machine without registering an account?

**Answer7:** Of course it can be used.If you don't want to register an account the first you use,you can skip the registration step,register the account is for customers to keep the labels and easy to find and print out again in future.

