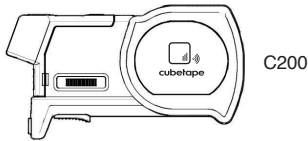


C200 Series Quickstart Guide

Scan Registration QR code or visit www.cubetape.com/register to register your device



IN THE BOX



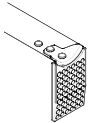
C200



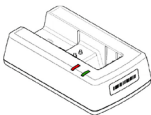
USB Cable



RF Dongle



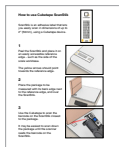
Bigfoot
Silicone Tip



Charge Cradle
(if selected)



Quickstart Guide



ScanStik Utilities

For full manual go to
www.cubetape.com/downloads

For support email
support@cubetape.com



Registration



Pair



BT Direct (HID)



BT App (SPP)

CHARGE BATTERY: Insert USB cable by the Scan button and connect to adaptor or if using charging cradle, connect USB cable and insert C200. **Red LED** is **ON** when charging.

POWER ON C200: Press the Scan button to power on.

OPTION 1: Connect to Windows using RF dongle.

- Scan **Pair**, **LED** will flash **green**.
- Insert dongle in spare Windows USB port, **LED** will turn **blue** when connected.
- Dimensions and barcodes will now be sent to the active Windows app.

OPTION 2: Connect to Android or Windows using Bluetooth Direct Mode (HID).

- Scan **BT Direct (HID)**.
- Scan **Pair** or hold Scan button for 6 seconds to enter pairing mode.
LED will flash alternately **blue** and **green**. (To cancel pairing mode press Scan twice).
- Connect Cubetape from Android or Windows connection menu.
LED will turn **blue** when connected.
- Dimensions and barcodes will now be sent to the active app.

OPTION 3: Connect to 3rd Party Android or Windows app using Bluetooth Application Mode (SPP).

- Scan **BT App (SPP)**.
- Refer to 3rd Party Application Guide.

DEFAULTS AND FACTORY RESET

Factory default settings are:

Connect to Windows host using dongle

Units = inches Suffix DIM = TAB

Output = nearest inch Suffix GEN = TAB

Return to factory settings anytime by scanning
Scanner Defaults and **Wireless Defaults**.



Shortcuts QR

Charge Cradle
also contains the
Shortcuts QR Code
on base.



Scanner Defaults



Wireless Defaults

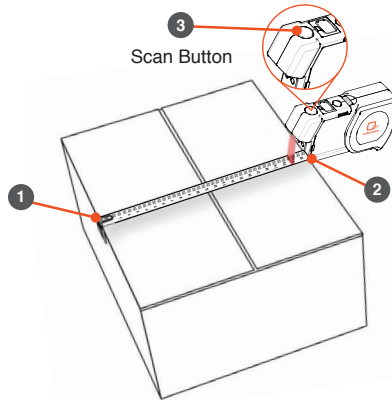
C200 Series Quickstart Guide

Scan Registration QR code or visit www.cubetape.com/register to register your device



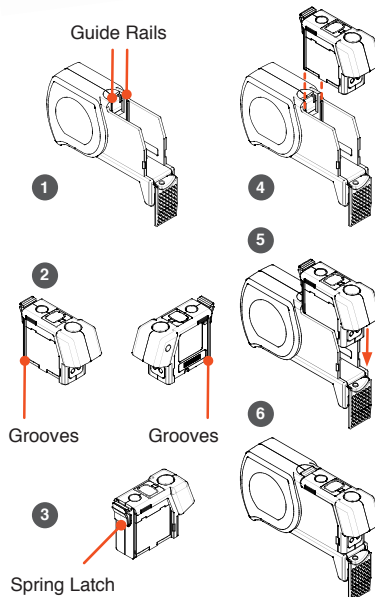
HOW TO MEASURE

1. Hook the tape end over the far edge of the package.
2. Align the tape exit point to the near edge of the package.
3. Press the Scan button to record and transmit the measurement.



ASSEMBLY

1. The tape cassette has guide rails on both sides.
2. The C200 Pod has guide grooves on both sides.
3. Spring latch locks into the tape cassette.
4. Align grooves and rails.
5. C200 Pod slides down into the tape cassette.
6. The latch in the C200 Pod locks into the tape cassette.



SET UNITS AND OUTPUTS

Select preferred units - inches or cm and output.



Units in



Output 0.5



Units cm



Output Nearest 1



Output Next 1

SET SUFFIX

Select preferred suffix for use with Dimensional (DIM) and General (GEN) items.



Suffix Dim CR



Suffix Gen CR



Suffix Dim TAB



Suffix Gen TAB

FCC warning statements:

This equipment has been tested and found to comply with the limits for a Class B digital device, pursuant to part 15 of the FCC Rules. These limits are designed to provide reasonable protection against harmful interference in a residential installation. This equipment generates, uses and can radiate radio frequency energy and, if not installed and used in accordance with the instructions, may cause harmful interference to radio communications. However, there is no guarantee that interference will not occur in a particular installation. If this equipment does cause harmful interference to radio or television reception, which can be determined by turning the equipment off and on, the user is encouraged to try to correct the interference by one or more of the following measures:

- Reorient or relocate the receiving antenna.
- Increase the separation between the equipment and receiver.
- Connect the equipment into an outlet on a circuit different from that to which the receiver is connected.
- Consult the dealer or an experienced radio/TV technician for help.

Caution: Any changes or modifications to this device not explicitly approved by manufacturer could void your authority to operate this equipment.

This device complies with part 15 of the FCC Rules. Operation is subject to the following two conditions: (1) This device may not cause harmful interference, and (2) this device must accept any interference received, including interference that may cause undesired operation.

The device has been evaluated to meet general RF exposure requirement.

IC warning statements:

-English Warning Statement:

RSS-GEN ISSUE 5, 8.4 User manual notice

This device contains licence-exempt transmitter(s)/receiver(s) that comply with Innovation, Science and Economic Development Canada's licence-exempt RSS(s). Operation is subject to the following two conditions:

- (1) This device may not cause interference.
- (2) This device must accept any interference, including interference that may cause undesired operation of the device.

The digital apparatus complies with Canadian CAN ICES-3 (B)/NMB-3(B).

-French Warning Statement:

RSS - Gen version 5, 8.4 avis du manuel de l'utilisateur

Cet appareil contient un émetteur / récepteur sans licence conforme au RSS sans licence d'innovation, science et développement économique Canada. L'opération doit satisfaire aux deux conditions suivantes:

Cet équipement peut ne pas causer d'interférence.

L'équipement doit accepter toute interférence, y compris toute interférence qui pourrait entraîner un fonctionnement indésirable de l'équipement.

This equipment complies with IC radiation exposure limits set forth for an uncontrolled environment and meets RSS-102 of the IC radio frequency (RF) Exposure rules. This equipment has very low levels of RF energy that are deemed to comply without testing of specific absorption ratio (SAR). Cet équipement est conforme aux limites d'exposition aux rayonnements énoncées pour un environnement non contrôlé et respecte les règles d'exposition aux fréquences radio électriques (RF) CNR-102 de l'IC. Cet équipement émet une énergie RF très faible qui est considérée conforme sans évaluation du débit d'absorption spécifique (DAS).