



QUICK START GUIDE

Speed Dome and AI Pro Box Plus Network Camera



User Manual



Smart Tools



All Software & files can be downloaded from
<http://www.milesight.com/support/download.asp>

Better Inside, More in Sight

Milesight Technology | www.milesight.com



IP VIDEO SURVEILLANCE



Table of Content

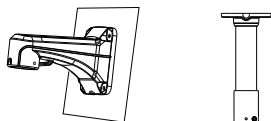
1. Quick Installation Steps.....	2
2. Hardware Overview.....	5
3. How to Connect to Alarm Interface.....	6
4. How to Connect the Water-proof Connector.....	6
5. Assigning an IP Address by Using Smart Tools.....	7
6. Assigning an IP Address via Browser.....	7
7. Accessing from the Web Brower.....	7

1. Quick Installation Steps

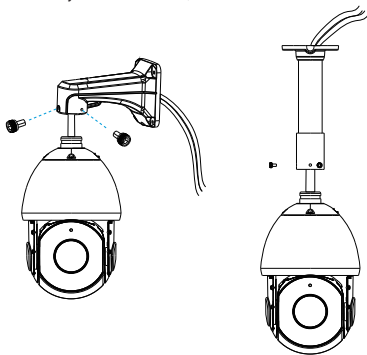
Speed Dome Network Camera

Step1: Check the wall or ceiling condition. Ensure that there is sufficient strength to avoid flaking. It should be able to bear the weight eight times larger than the camera's;

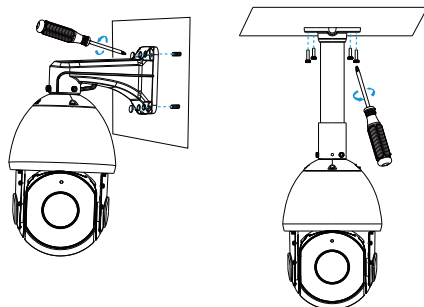
Step2: Use the wall or ceiling hanging holder to mark the holes. Drill 4 holes on the wall or ceiling;



Step3: Put the cables through the holder. Match the holder with the screw holes of the camera body and secure them;

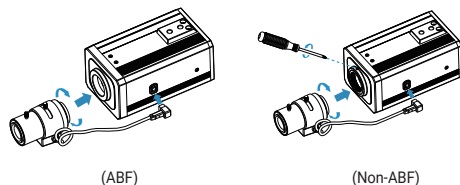


Step4: Make sure that the camera body has been correctly installed to and match the holder to the holes on the wall or ceiling, then tighten up the screws.

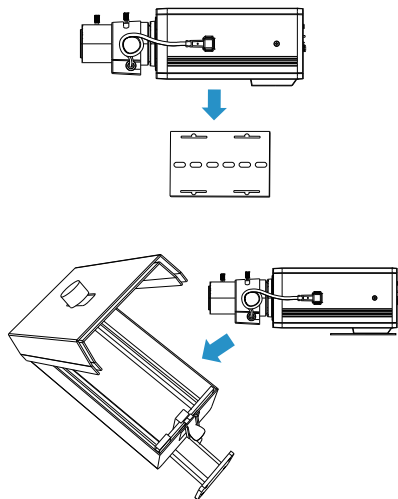


AI Pro Box Plus Network Camera

Step1: Fix the lens and the cable for Iris controlling to the Pro Box Plus, then tighten the screw;



Step2: Connect the cables. Fix the camera on the accessory which has already been installed on the position where the camera is intended to be mounted (Milesight provides Protective Housing(A51) for installation).



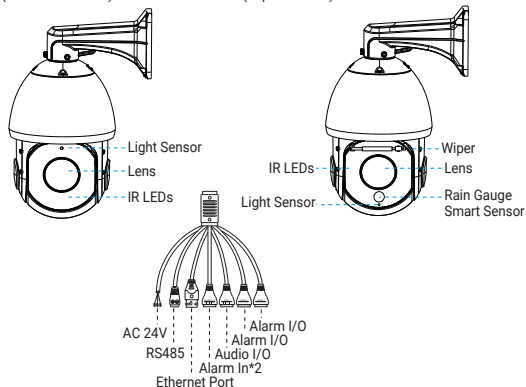
Note:
You can press ABF button on the back panel of camera to help focusing.

2. Hardware Overview

Speed Dome Network Camera

(Standard Version)

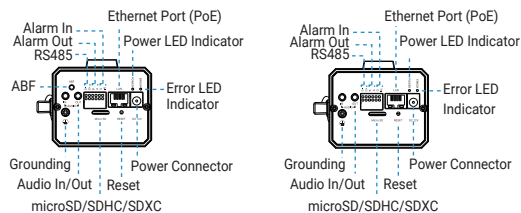
(Wiper Version)



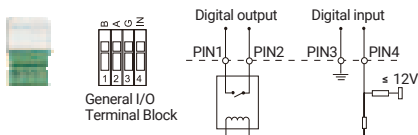
AI Pro Box Plus Network Camera

(ABF)

(Non-ABF)



3. How to Connect to Alarm Interface



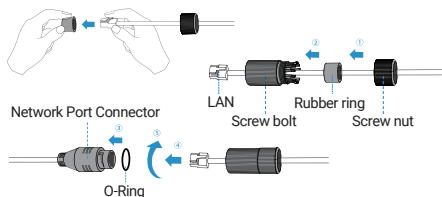
PIN1: Alarm Output NC/NO 24V DC 1A

PIN2: Alarm Output NC/NO 24V DC 1A

PIN3: Alarm Input NC/NO $\leq 12V$

PIN4: Alarm Input NC/NO $\leq 12V$

4. How to Connect the Water-proof Connector



Step1: Get the network cable through the screw nut, rubber ring and the screw bolt;

Step2: Insert the rubber ring into the screw bolt;

Step3: Connect the screw nut to the screw bolt;

Step4: Place the O-Ring on the network port connector;

Step5: Connect the RJ45 to the network port connector, tighten the screw bolt and the connector.

Note:

Please tightly wrapped all cable-out interface with adhesive tape at last to prevent them from water.

5. Assigning an IP Address by Using Smart Tools

Smart Tools is a software tool which can automatically detect multiple online Milesight network cameras in the LAN, set IP addresses, and manage firmware upgrades. It's recommended to use when assigning IP addresses for multiple cameras.



The steps to change the IP of cameras are as below:

- 1) Start Smart Tools, click the IPC Tools page, then enter the device information, such as IP address, MAC address, Port number, Netmask, and Gateway, then all related Milesight network cameras in the same network that will be shown.
- 2) Select a camera or multiple cameras according to the MAC addresses.
- 3) Click "Activate" to set the password when using the cameras for the first time (Password must be 8 to 32 characters long, contain at least one number and one letter), and set three security questions (If you forget the password, you can reset the password by answering three security questions correctly).
- 4) Type the user name and password you set, change the IP address or other network values, and then click "Modify" button.
- 5) By double clicking the selected camera or the browser of interested camera, you can access the camera via web browser directly.

More usage of Smart Tools, please refer to the "Smart Tools User Manual".

6. Assigning an IP Address via Browser

If the network segment of the computer and that of the camera are different, please add some 192.168.5.xx(255.255.255.0) for your PC to get access to your cameras, more details can be found on "Milesight Network Camera Quick Start".

7. Accessing from the Web Browser

The camera can be used with the most standard operating systems and browsers. The recommended browsers are Internet Explorer, Firefox, Chrome, Safari. More information about the plugin installation, please refer to the troubleshooting:

5. Milesight-Troubleshooting-Plugin Installation on Windows-IPC

6. Milesight-Troubleshooting-Plugin Installation on MAC

Speed Dome/ AI Pro Box Plus

Thank you
for choosing
Milesight Product

Milesight Technology