

WiFi IP CAMERA

QUICK OPERATION GUIDE



Apply for Model:P1-4X /P2-20X/P3-4X/P14-4X

Note: Due to the continuous updating of the products and software, there may have some discrepancy between the operating guide and APP interface. All the instructions are subject to the actual operation interface. If you want to know if you can update the fireware, pls contact technical team.

Service Guarantee

If you have any other questions, pls contact the customer service email address at the first time. It would be better for us to improve our service efficiency that if you can write down your E-mail address, the model of the product and the order number you bought.

Company Name: ShenZhen Bang Bang E-Commerce Technology Co., Ltd.

Company Address: A913 NiuLanQian Buliding Min Zhi Road Long Hua District Shenzhen

Guangdong China 518109

Email: support@yoluke-tech.com

WhatsApp: +86 135 4401 2806

Wechat: 135 4401 2806

Contents

WiFi IP CAMERA.....	1 -
Service Guarantee.....	2 -
1. Introduction.....	4 -
2. Installation.....	5 -
3. SD Card Slot.....	5 -
4. APP Download.....	5 -
5. Mobile APP CamHipro Connection.....	6 -
5.1 Connect the Camera by Network cable.....	6 -
5.2 Connect to IP Camera Hot-Spot and then Configure Wi-Fi.....	7 -
5.3 Add Camera.....	8 -
5.4 Wi-Fi Setting.....	8 -
5.5 Connect the Camera by Search Nearby Devices.....	9 -
5.6 Mobile APP Function Introduction.....	11 -
5.6.1 Micro SD Card Video files playback and download.....	11 -
5.6.2 Local files, device list and add other new camera.....	12 -
5.6.3 Pre-set point and auto cruise (For PTZ).....	12 -
5.6.4 Change password.....	14 -
5.5.5 Set factory of the camera.....	15 -
5.6.6 Alarm management and notification.....	15 -
5.6.7 Motion Detection.....	16 -
5.6.8 Email settings.....	16 -
5.6.9 FTP setting.....	17 -
5.6.10 Video setting and audio setting.....	17 -
5.6.11 SD card plan recording.....	18 -
5.6.12 Device time setting.....	18 -
5.6.13 SD card setting.....	19 -
5.6.14 Default setting.....	19 -
6. Computer Browsing Access.....	19 -
6.1 Download Search Tool.....	19 -
6.2 Search IP Camera.....	20 -
6.3 View Video by Browser.....	21 -
6.4 Interface.....	21 -
6.5 Parameter Settings.....	22 -
6.5.1 Setting→Media.....	22 -
6.5.2 Setting→Network.....	23 -
6.5.3 Setting→Alarm.....	26 -
6.5.4 Setting → Advanced.....	28 -
6.5.5 Settings → System.....	33 -
7. Video Management Software (HIP2P Client).....	35 -
7.1 Software installation.....	35 -
7.2 Add Camera.....	38 -
Frequently Asked Questions.....	41 -

1. Introduction

Thanks for buying YoLuke Security IP Camera. This manual describes all the parameters, functional structures, usage, common problems and solutions for the cameras in detail. This would help you know the camera quickly and use it easily.

If you have any problems with our camera or confused in the settings, please contact with us, and we will provide technical support and service at the first time.



P1-4X



P2-20X



P3-4X

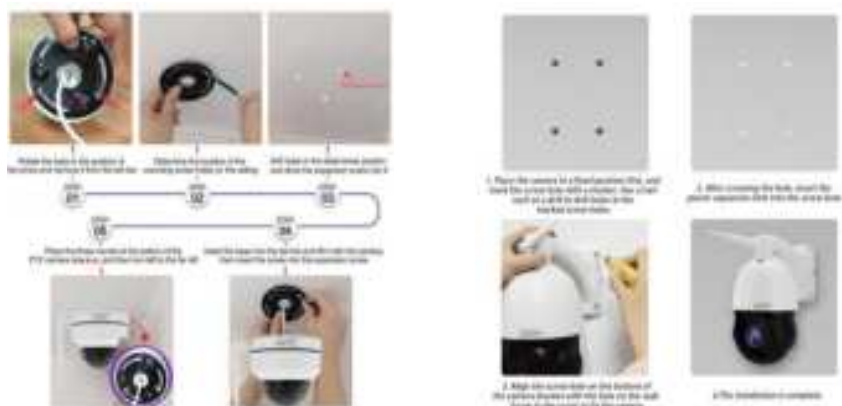


P3-4X



P14-4X

2. Installation



3. SD Card Slot



4. APP Download

Download APP “CamHipro” in Google Play or Apple Store, or scan the QR Code to install. Also we would recommend :Tinecam/Ip Pro3, and ISpy.



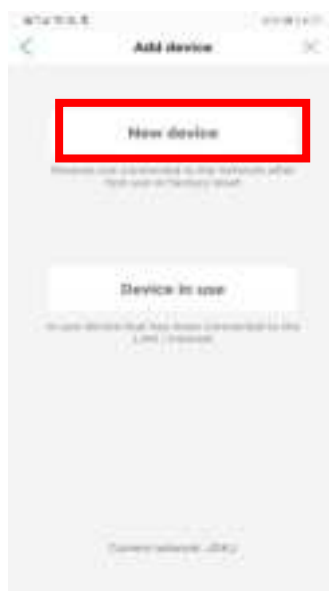
5. Mobile APP CamHipro Connection

5.1 Connect the Camera by Network cable

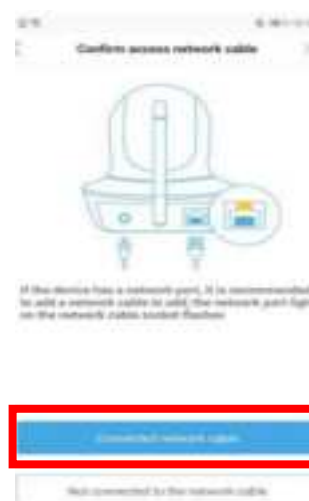
Install the APP, connect the mobile phone to the WIFI network, enter the APP and click the Add Device button to enter the Add Device interface. Choose different adding methods according to different types of cameras, because common IP cameras cover various adding methods. The following adding instructions are based on IP cameras.



Step 1



Step 2



Step 3



Step 4



Step 5



Step 6



Step 7



Step 8



Step 9

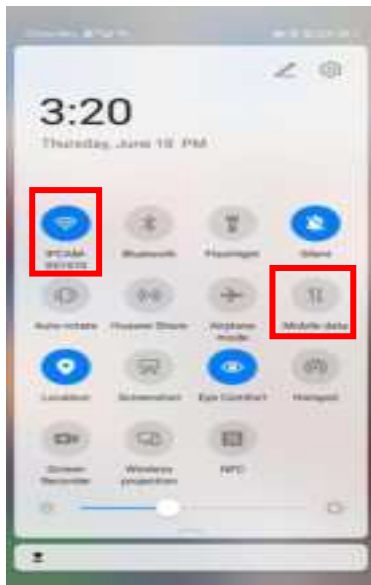
5.2 Connect to IP Camera Hot-Spot and then Configure Wi-Fi

Go to your cell phone's Wi-Fi Setting -- search Wi-Fi signals -- connect the Wi-Fi.

The name of Wi-Fi Hot Spot is the UID on the camera (Wi-Fi name: IPCAM-900139)

Camera default Wi-Fi Hot Spot password: **01234567**

Remark: Only when the mobile phone is 3-5 meters away from the camera can the hot spot signal be detected, please close the mobile data when connect the camera Hot Spot.



5.3 Add Camera

Add your camera to 'CamHipro' APP follow the steps of the below pictures.



Step 1



Step 2



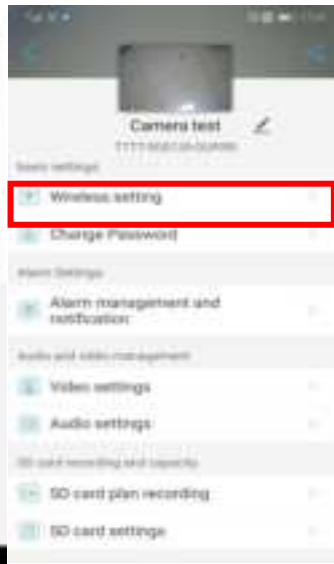
Step 3

5.4 Wi-Fi Setting

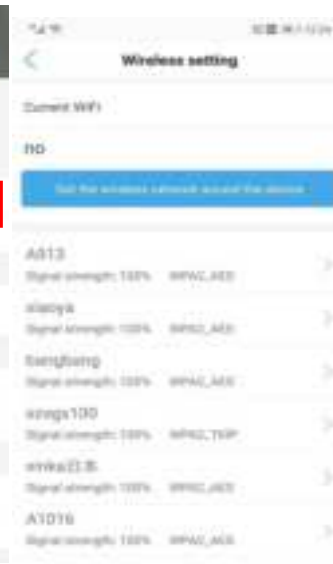
Set Wi-Fi for your camera with the your Router's Wi-Fi, follow the steps below:



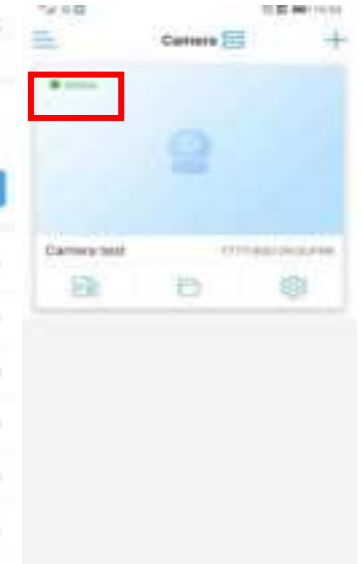
Step 1



Step 2



Step 3



Step 4

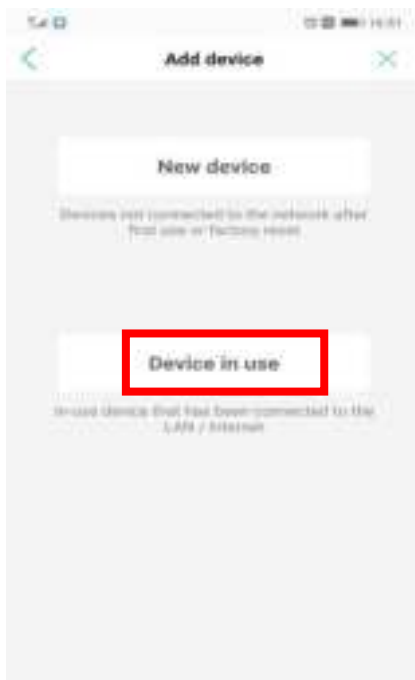
5.5 Connect the Camera by Search Nearby Devices

A) Connect the camera to the power supply and the camera would turn into self-test mode, which would take about 15 seconds. Open the 'CamHipro' APP.

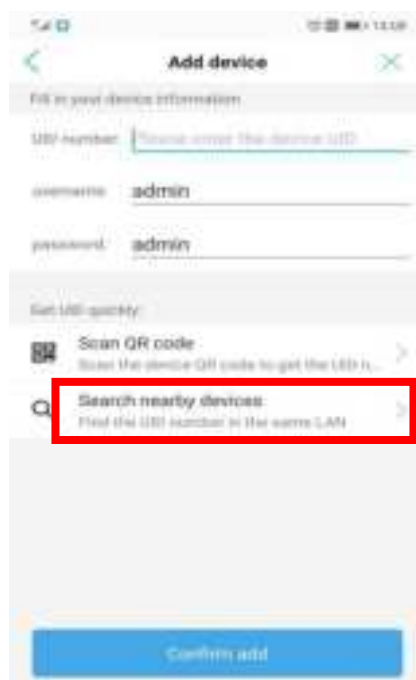
B) Add the camera by Search Nearby Devices follow the below steps.

Note:

1. Please make sure that the camera has been connected to router's Wi-Fi.
2. Please make sure that your cell phone connects the same Wi-Fi as the camera connected.
3. If there is no camera on the device list, please come close to the camera and refresh.



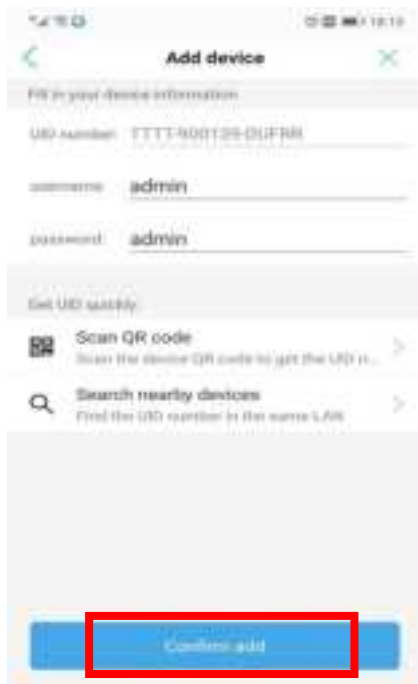
Step 1



Step 2



Step 3



Step 4



Step 5

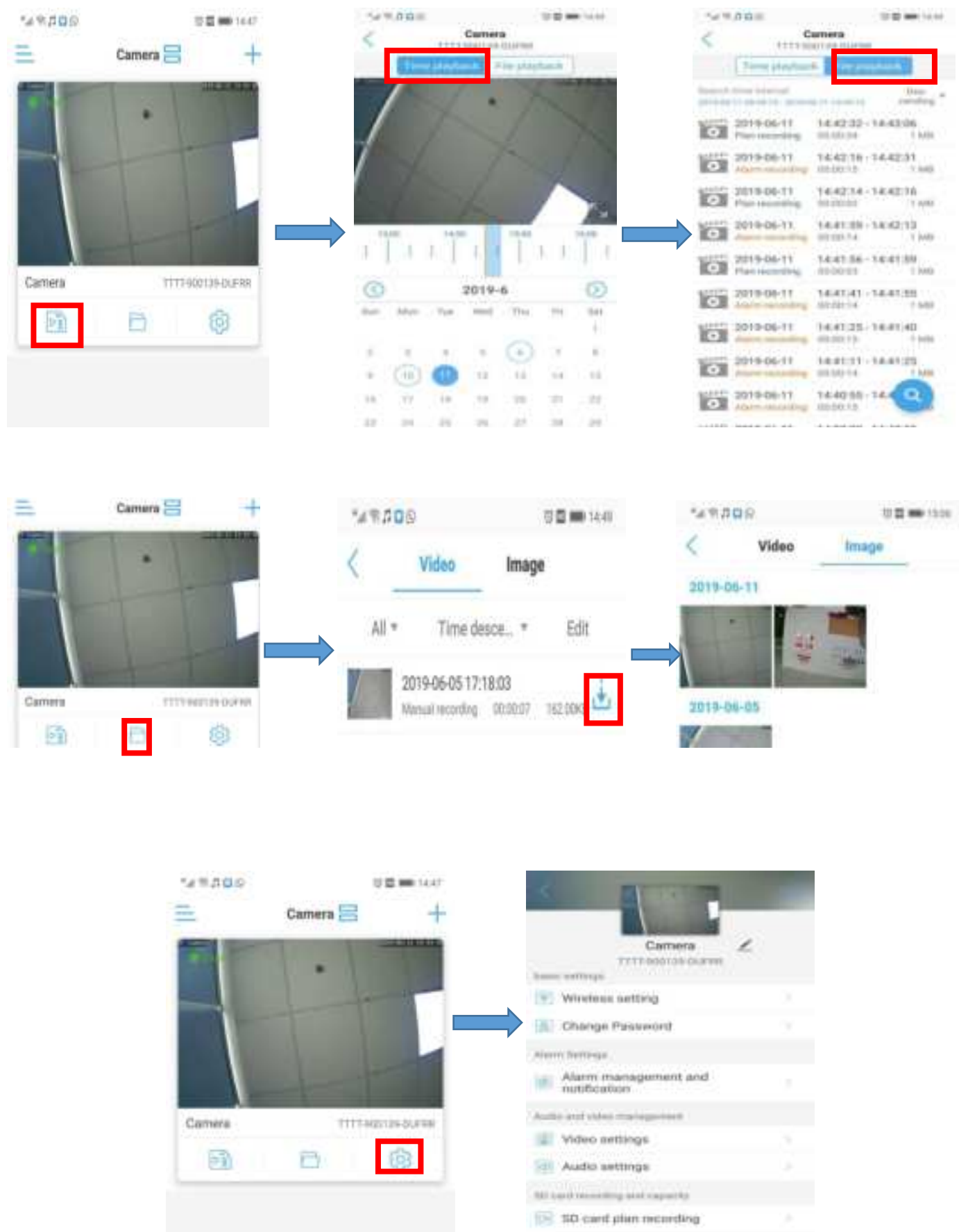


Step 6


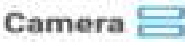

5.6 Mobile APP Function Introduction

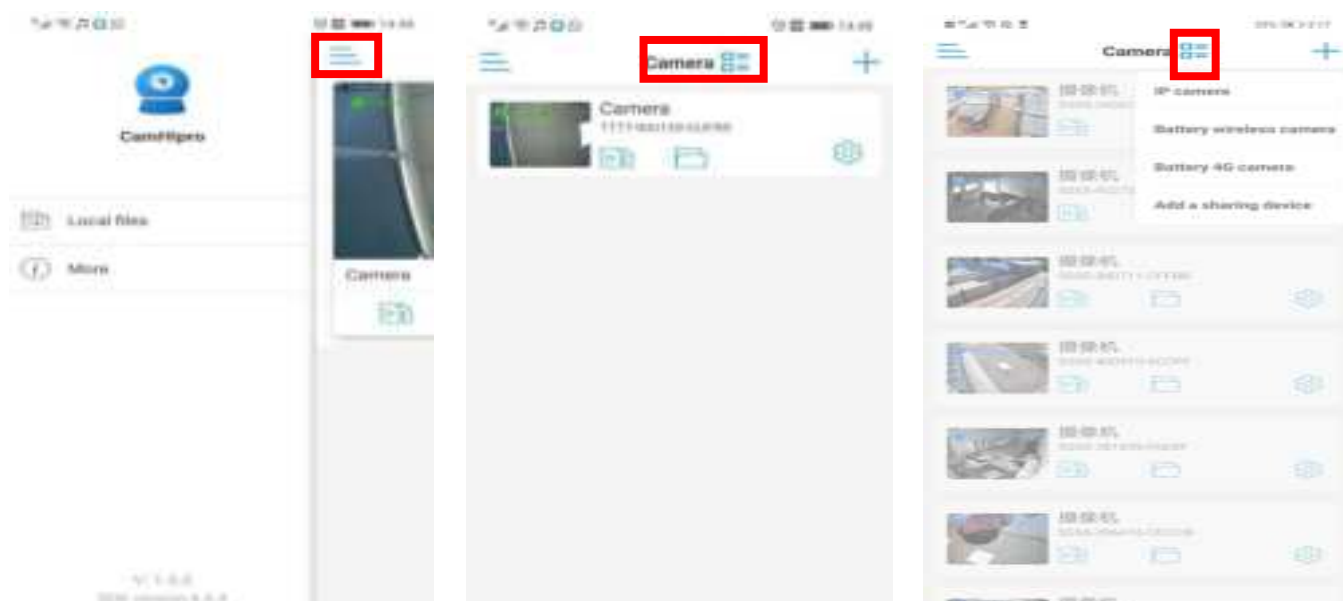
5.6.1 Micro SD Card Video files playback and download

Opps:if you download the recorded video files from pc,then the files can only be played in hiplayer.



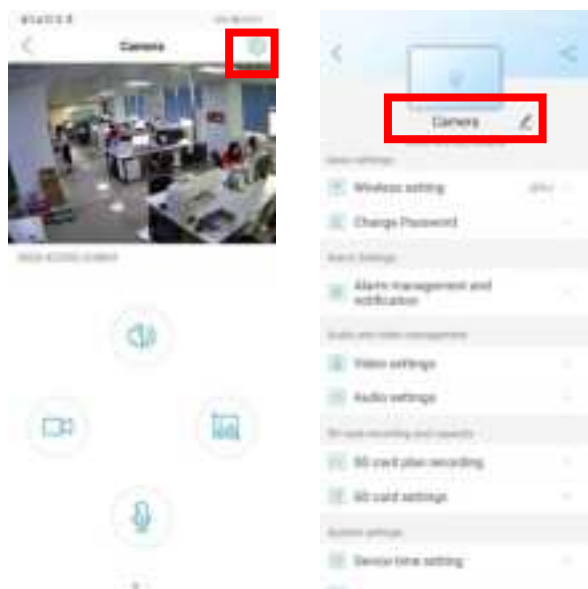
5.6.2 Local files, device list and add other new camera

Click  to view the local file of different cameras. ;click  to change the camera device list; click  to add a new camera.



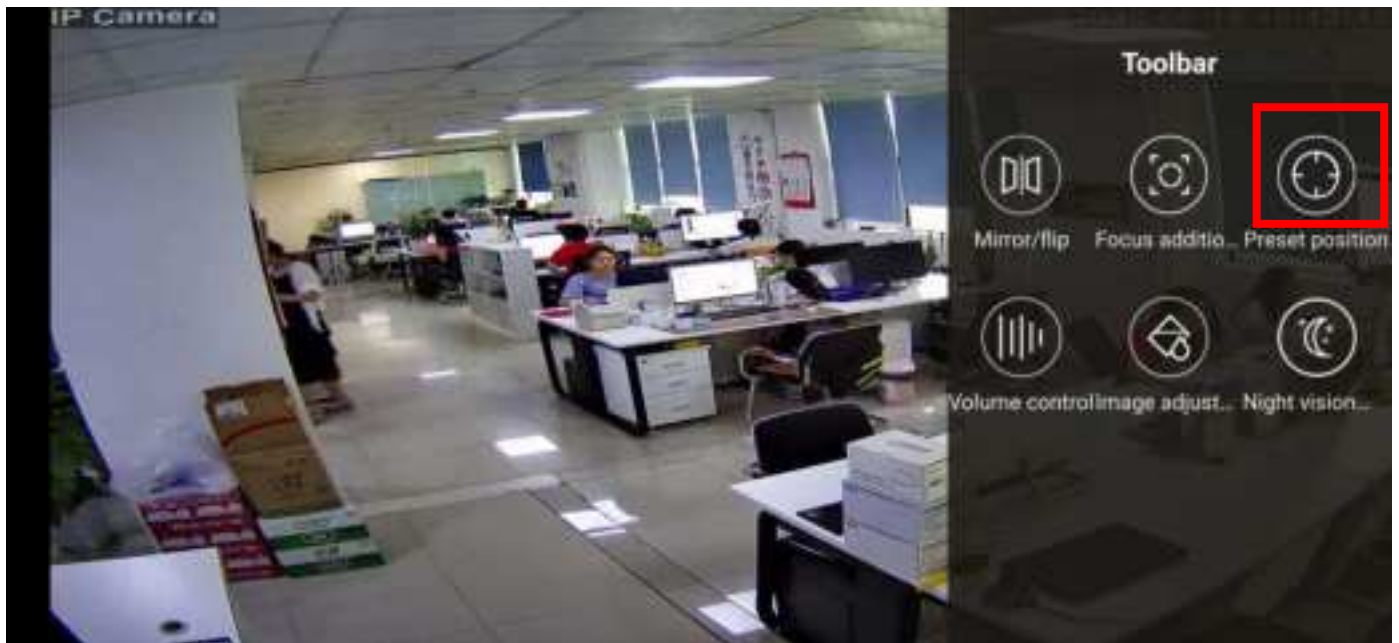
5.6.3 Pre-set point and auto cruise (For PTZ)

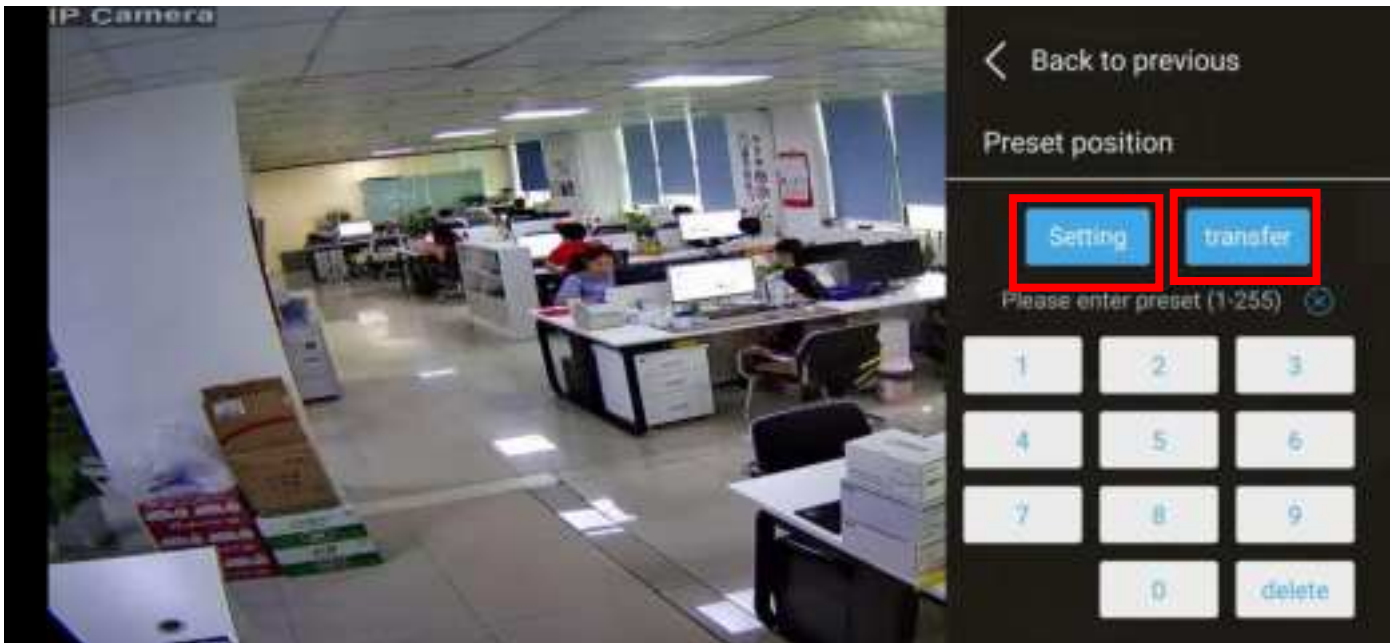
Click the camera into real-time monitor -- turn to next page -- preset position





Remarks: HD is a higher-definition display effect than SD (recommended to use when the network is good)





Auto Cruise Function:

Number 1-16 means 16 points you want to set up

Adjust the camera rotation to the first point you want to monitor on the app; input "1" and Setting;

Adjust the camera rotation to the second point you want to monitor on the app; input "2" and Setting;

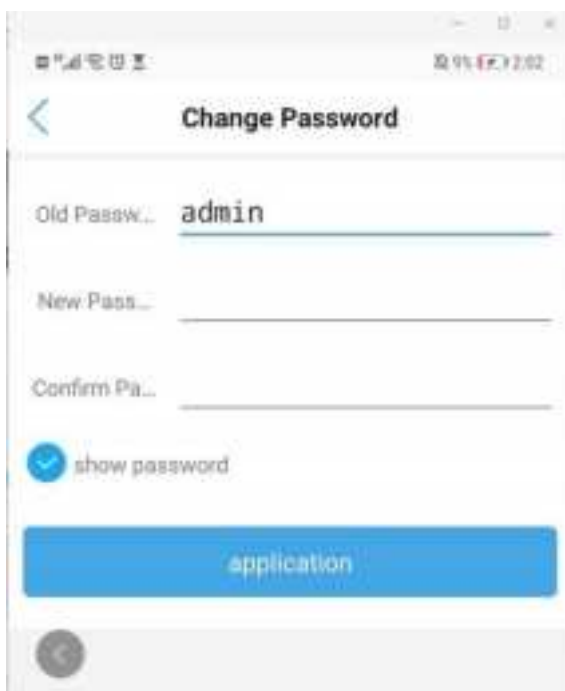
.....until set up 16 points.....

After you set up 16 points, input "41" and transfer. The camera will auto cruise.

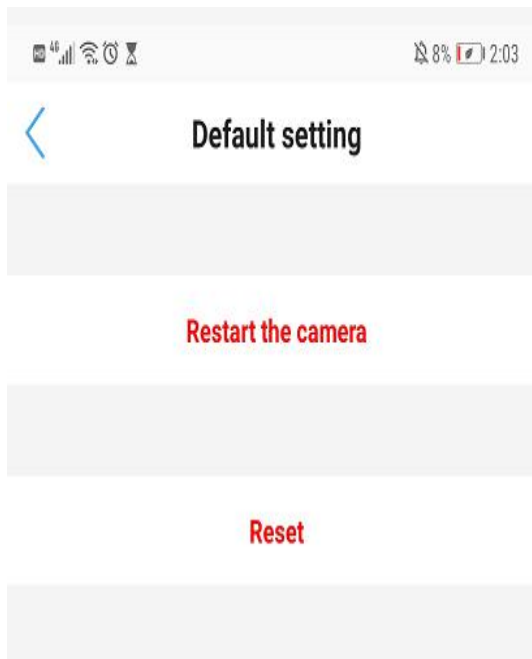
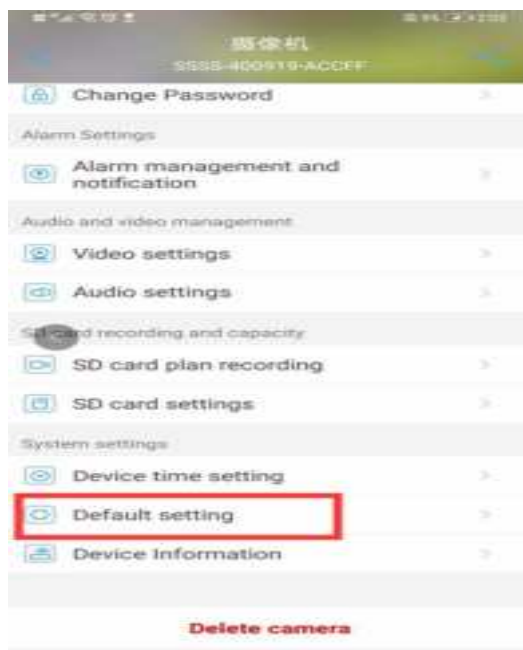
Input "41" and Setting, auto cruise will stop

5.6.4 Change password

Click "Change Password" to modify the password. Old password:admin

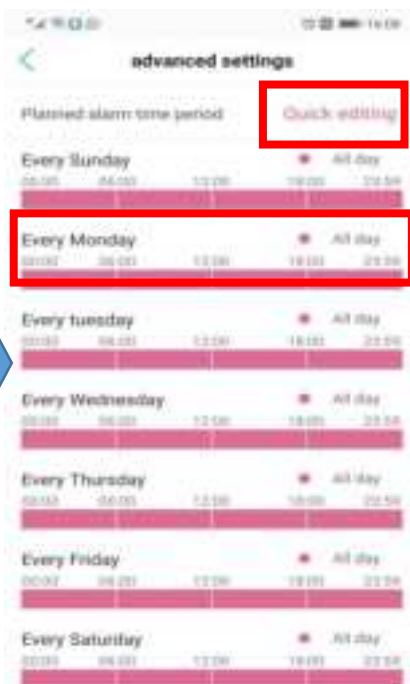


5.5.5 Set factory of the camera

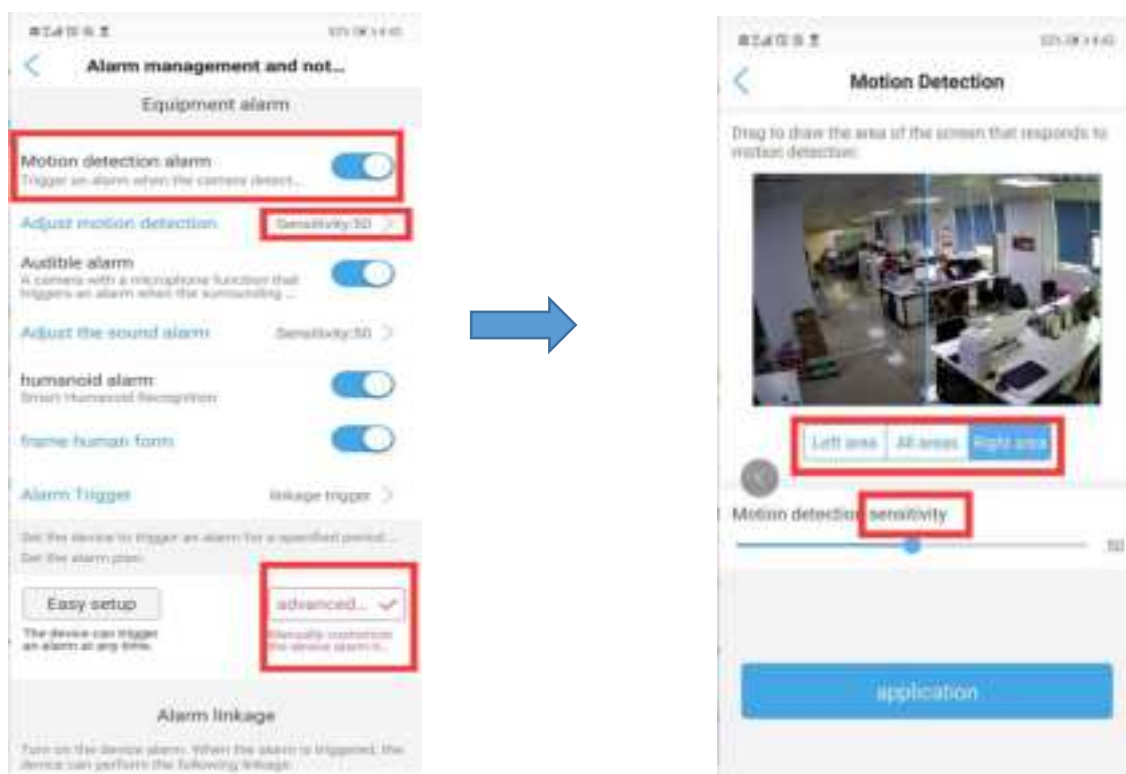


5.6.6 Alarm management and notification

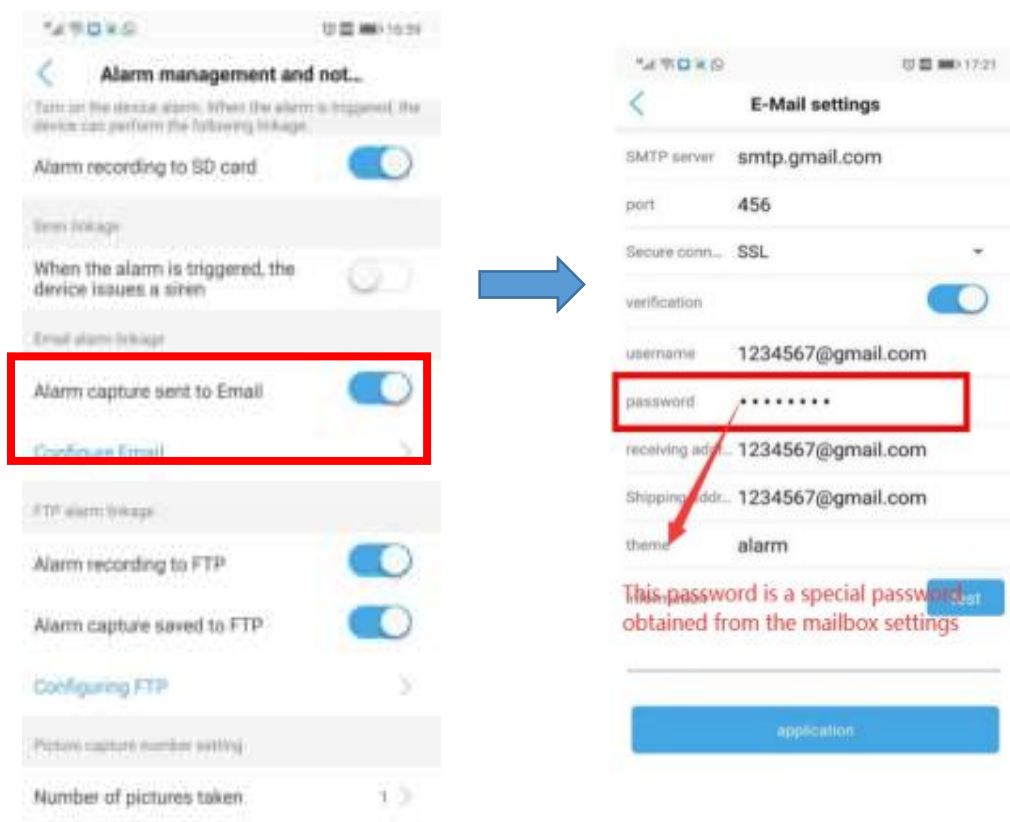
Recording and alarm, default recording all day; APP push is off by default; Recording time period and alarm time period can be customized



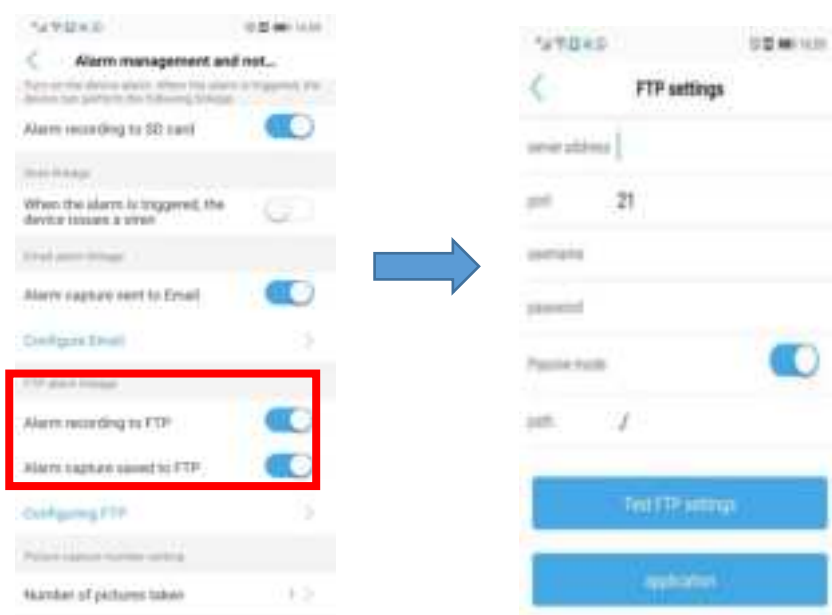
5.6.7 Motion Detection



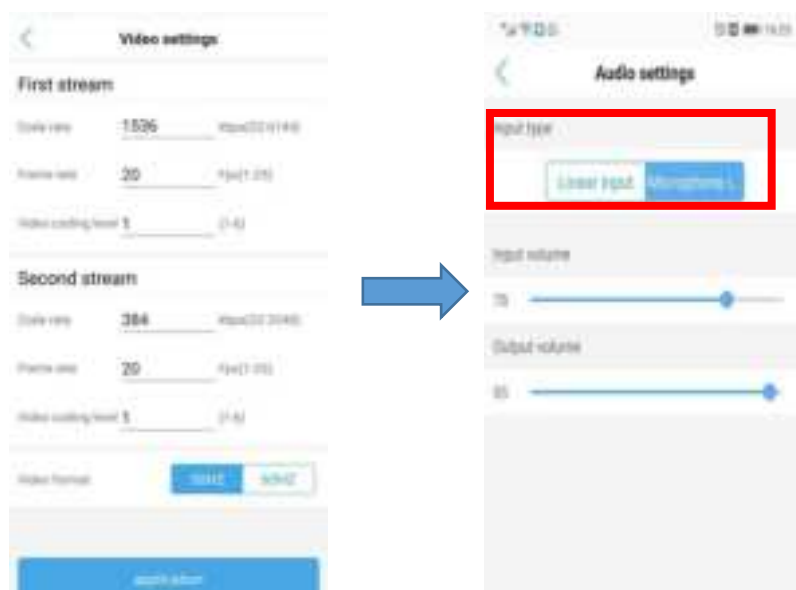
5.6.8 Email settings



5.6.9 FTP setting

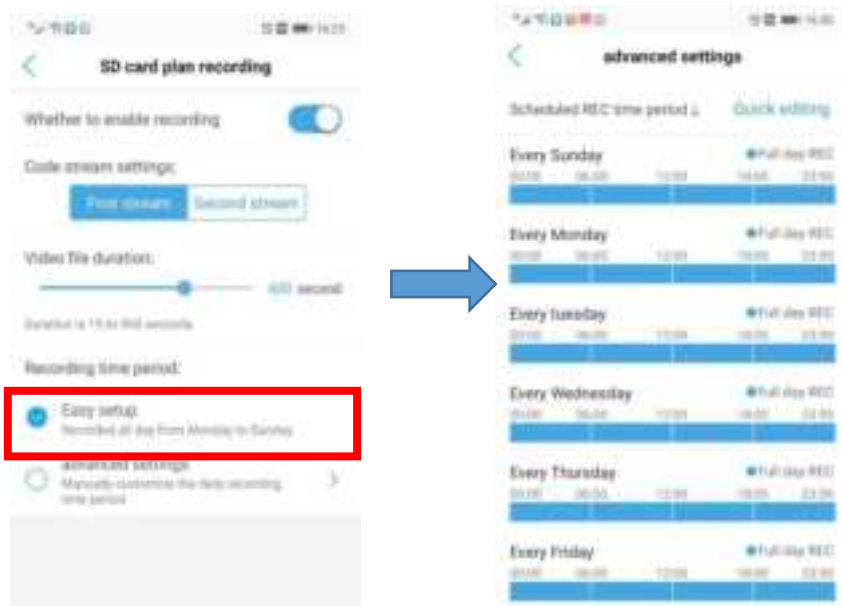


5.6.10 Video setting and audio setting

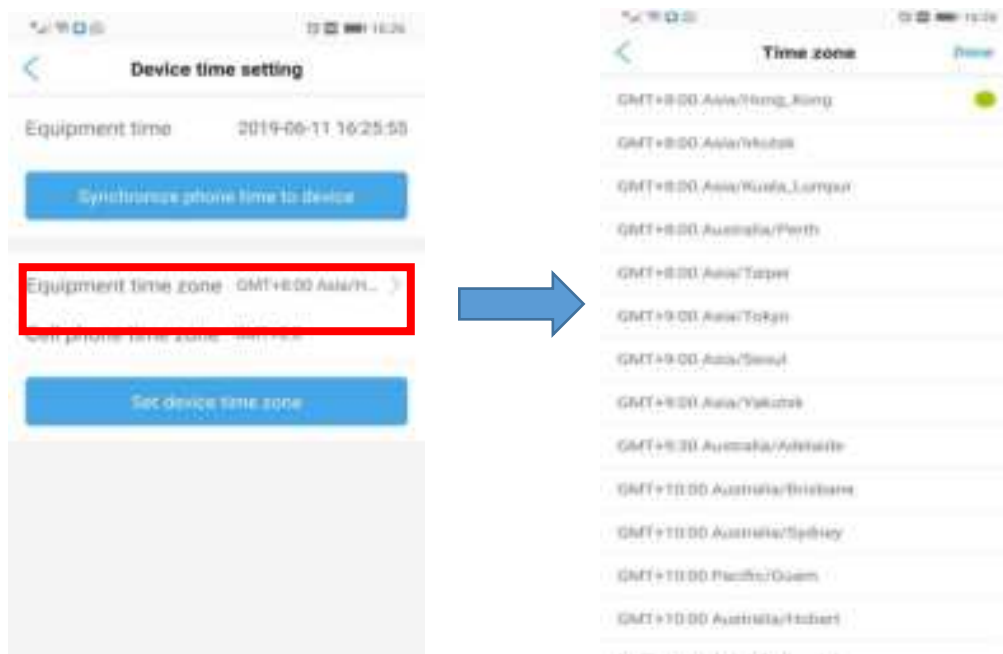


5.6.11 SD card plan recording

Need to change the camera time to the local time zone first



5.6.12 Device time setting



5.6.13 SD card setting

The files in the SD card cannot be deleted to keep the playback function coherent, the SD card will automatically overwrite the earliest recording



5.6.14 Default setting



6. Computer Browsing Access

6.1 Download Search Tool

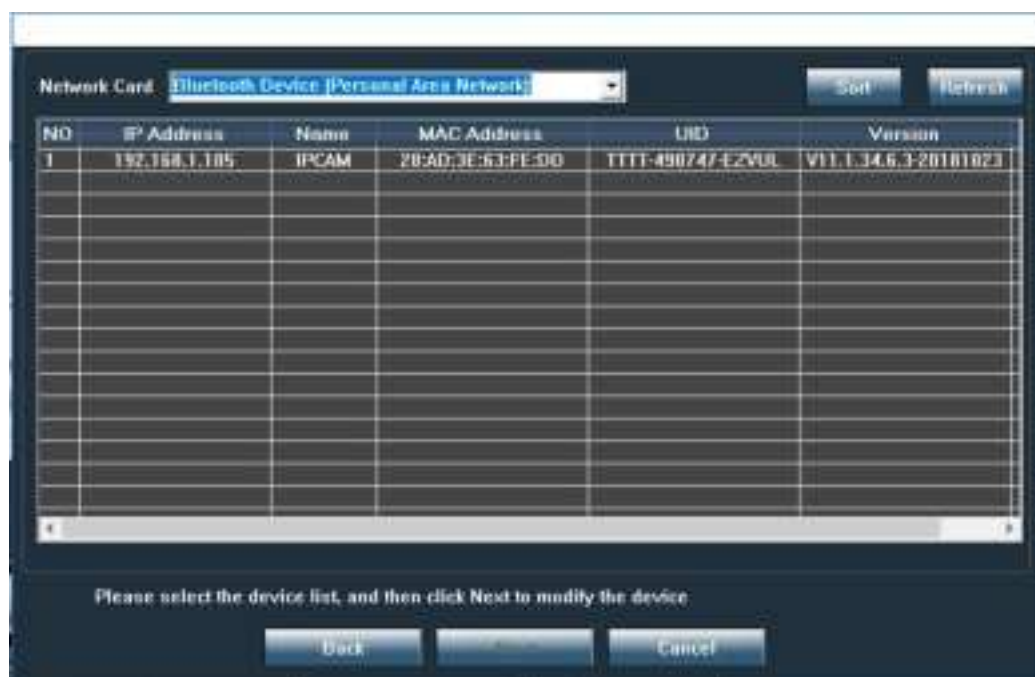
Download Software from the website (<http://www.gentlen168.com/security-camera/info/898.html>) or Mini CD in the package, open the file and install search tool in your computer. Click “next” to find IP camera. Also You can select Network Card to search IP Camera.

Note: Through the search tool you can find all IP camera in your local area network, and can modify the basic configuration of the camera such as: IP address, user and password, camera name, etc... You can also access the camera through the browser (recommended IE browser), in the browser you can test the camera and configure all the settings of the camera.



6.2 Search IP Camera

Click "next" to find IP camera. You can select Network Card to search IP Camera.





6.3 View Video by Browser




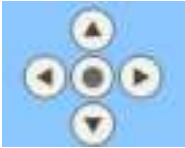


Support IE, Google and Firefox browser, Install ActiveX before view video.



6.4 Interface



Region A		Multiple preview modes.
Region B		View memory card capacity and date.

		Click on the capture and take the current image.
		Local manual recording.
		Video Recording playback: Click the playback, select the date and time, select the local playback or SD card playback, search the video files and double click on the file to play.
Region C		PTZ control operation interface, control the camera to rotate horizontally and vertically.
		Control the camera zoom in/out, focus +/-, left / right and up / down cruise.
		Adjust the camera rotation speed and presetting point settings: Select presetting point 1, the camera rotates to the screen you want to monitor, click on the setting to set the preset point. Type 41 in Presetting to call the command of auto cruise.

6.5 Parameter Settings

6.5.1 Setting→Media

Video: Set the video format, video coding, resolution, bit rate, max frame rate, key frame interval, bit rate control and image quality.



OSD Set: Set time stamp, time show, camera name and name show in this interface.



Image: Adjust the brightness, saturation, contrast, exposure parameter and set the WDR, Aemode, Imgmode, Intelligent night mode, IR LED Control, IRCut in this interface. (The camera does not support full colour night vision and smart night vision currently.)



Audio: Audio type support G711 / 726 protocol, audio stream selection on/off, audio input type selection, input / output volume adjustment

6.5.2 Setting→Network

Network: The IP address can be selected manually settings or automatically obtain. The DNS also can be selected manually or automatically.

Wireless: Enable Wireless to search and select the wireless network that you want to add, put password. Click the “check” to verify camera if connected to the wireless signal.

DDNS: To set up DDNS (Remote access), requesting an dynamic domain name to fill in the username and password which provided by Service provider. Contact us to get the cam ID number, each camera username and password will be different. Also you could use a third-party domain name to set it up.



Platform: this function was replaced by P2P, please use P2P to complete your setting.

ONVIF: Set the Server Port, Preview, Time zone Setting, Image Setting, NVC Type in this interface.



P2P: Enable this function, can watch video in Mobile App via add UID Number.



6.5.3 Setting→Alarm

Audio alarm: Enable this function. Need to connect a buzzer, turn on & adjust the volume, audio alarm can work well.



Motion detection: There are 4 windows selections under Motion Detection. Select different windows to

display different window positions. Drag the selected window to enlarge the window proportion. Manually type the sensitivity value or swipe the sensitivity bar to adjust the sensitivity.



Alarm: Email setting method is the same as Phone APP. Set the FTP server setting and Image capture in this interface.



Schedule: Select the time and click on the “Apply”.



6.5.4 Setting → Advanced

User: For Change password.



Monitor

Settings

Media

Network

Alarm

Advanced

User

Auto snap

Time record

Email

FTP

Terminal

ADSSnet

Multiple settings

Video storage

Restart timer

System

Preview

User name

Password

Rx type password


admin

admin

Apply

Cancel

Auto snap: Time capture, Choose to set the SD card snap interval or FTP snap interval and save route.



Monitor

Settings

Media

Network

Alarm

Advanced

User

Auto snap

Time record

Email

FTP

Terminal

ADSSnet

Multiple settings

Video storage

Restart timer

System

SD card snap interval

60

sec

☐ Save Picture on the SD Card

FTP snap interval

60

sec

☐ Save Picture on the FTP Server

☒ FTP

	0	1	2	3	4	5	6	7	8	9	10	11	12	13	14	15	16	17	18	19	20	21	22	23
Sunday																								
Monday																								
Tuesday																								
Wednesday																								
Thursday																								
Friday																								
Saturday																								

Apply

Select List

Clear List

Timed record: Set the Record files duration, whether to open Record and stream.

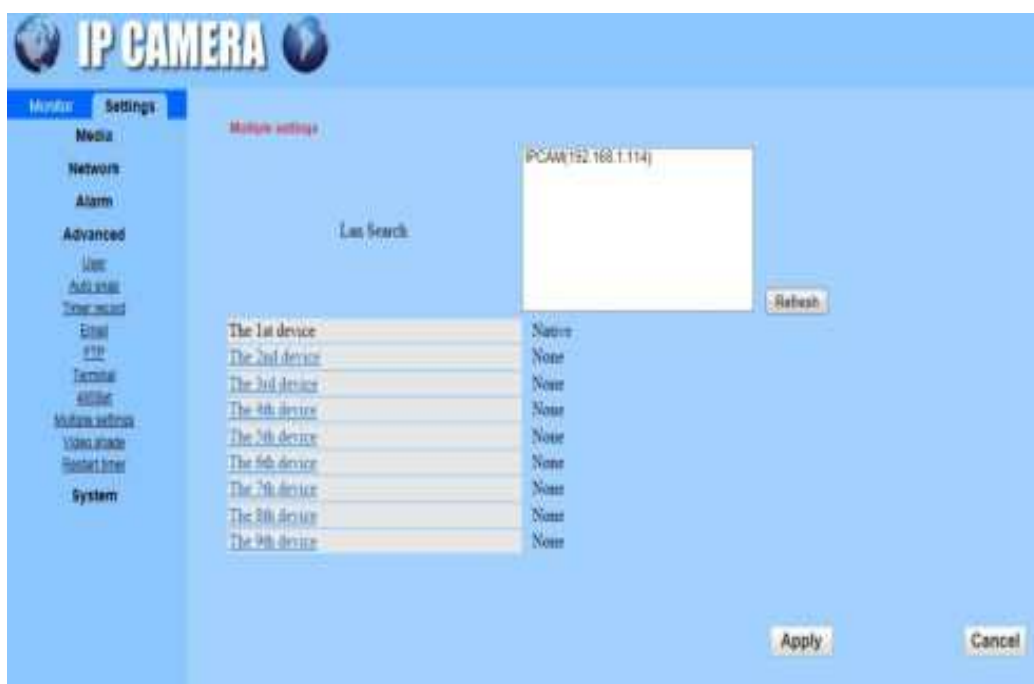


Terminal: Set the cruise laps, select the centred while self-check on/off, close the alarm PTZ movement on/off and indicator display mode.

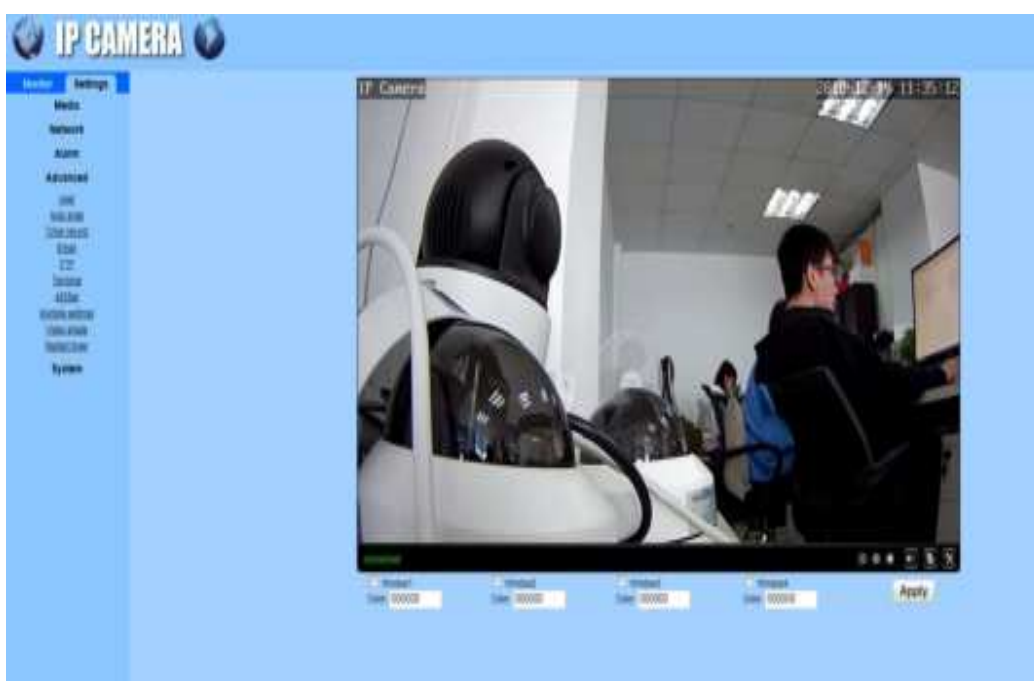


485Set: These cameras can't support RS485.

Multiple setting: In the same LAN, two or more of this series products from our company's, can be displayed on the same page via this Multiple Setting.



Video Shade: Video shade setting method is the same as the motion detection.



Restart timer: Turn on the restart timer and set restart time, then click “Apply”, the camera will follow the settings to scheduled reboot.



6.5.5 Settings → System

Time: Select the NTP server to synchronize the camera with the internet network time, click to “Sync with PC time”. The camera time automatically becomes the time displayed on the computer.



Initialize: Set the Language (only available in Chinese and English currently), Lenstype, Reboot, Factory default, Backup setting data and system upgrade in this interface.



Device information: The device information include device ID, device type, network connection and etc.



System Log: The system log records all the steps of the device.



7. Video Management Software (HIP2P Client)

Using Video Management software to view multiple cameras at the same time


7.1 Software installation

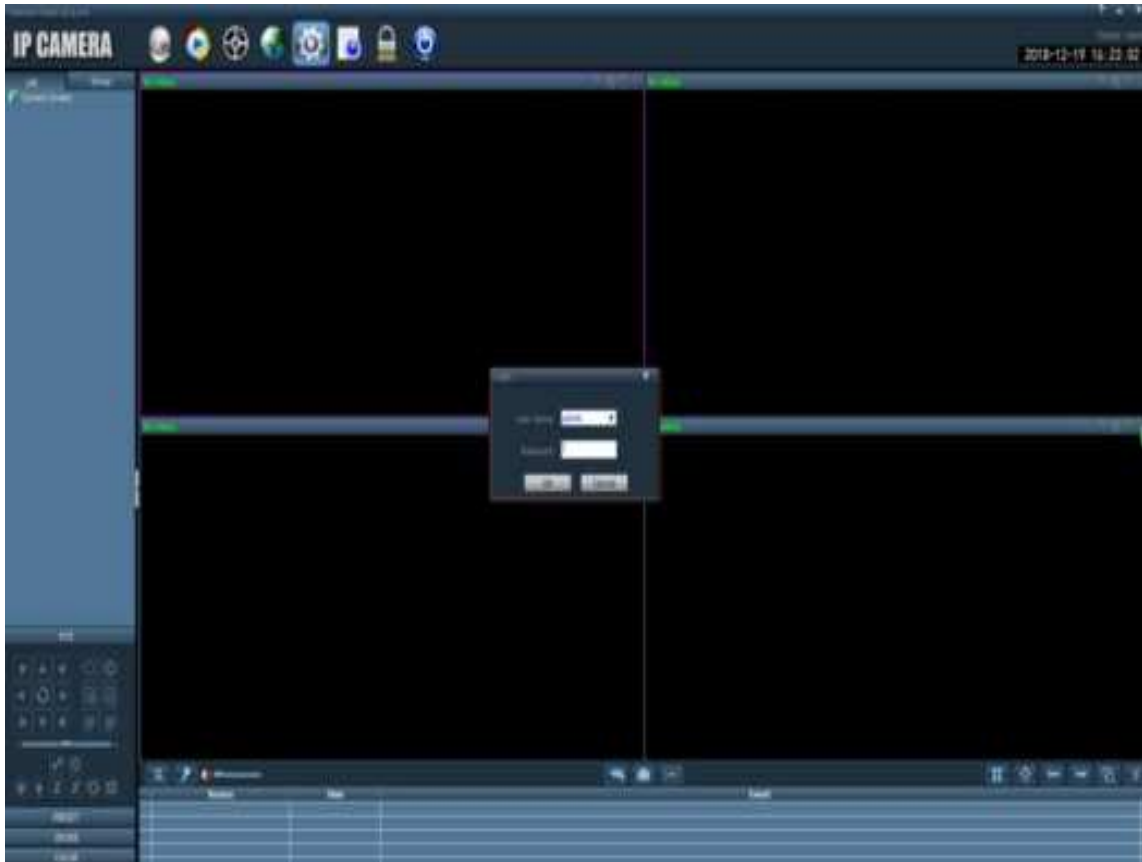
Scarica dal sito Web (<http://www.gentlen168.com/security-camera/info/898.html>) o Mini CD nel pacchetto. Installalo sul tuo computer.

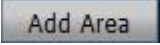
Nota: questo programma riconosce l'UID della videocamera e non l'IP della videocamera. L'IP della telecamera è adatto per l'accesso al browser web



7.2 Add Camera

A) Open the software, click , to login system, **default password: leave it blank**.



B) Click  to Set an Area name (Like: office / home / factory.....), you also can modify and delete Area as picture showing below.




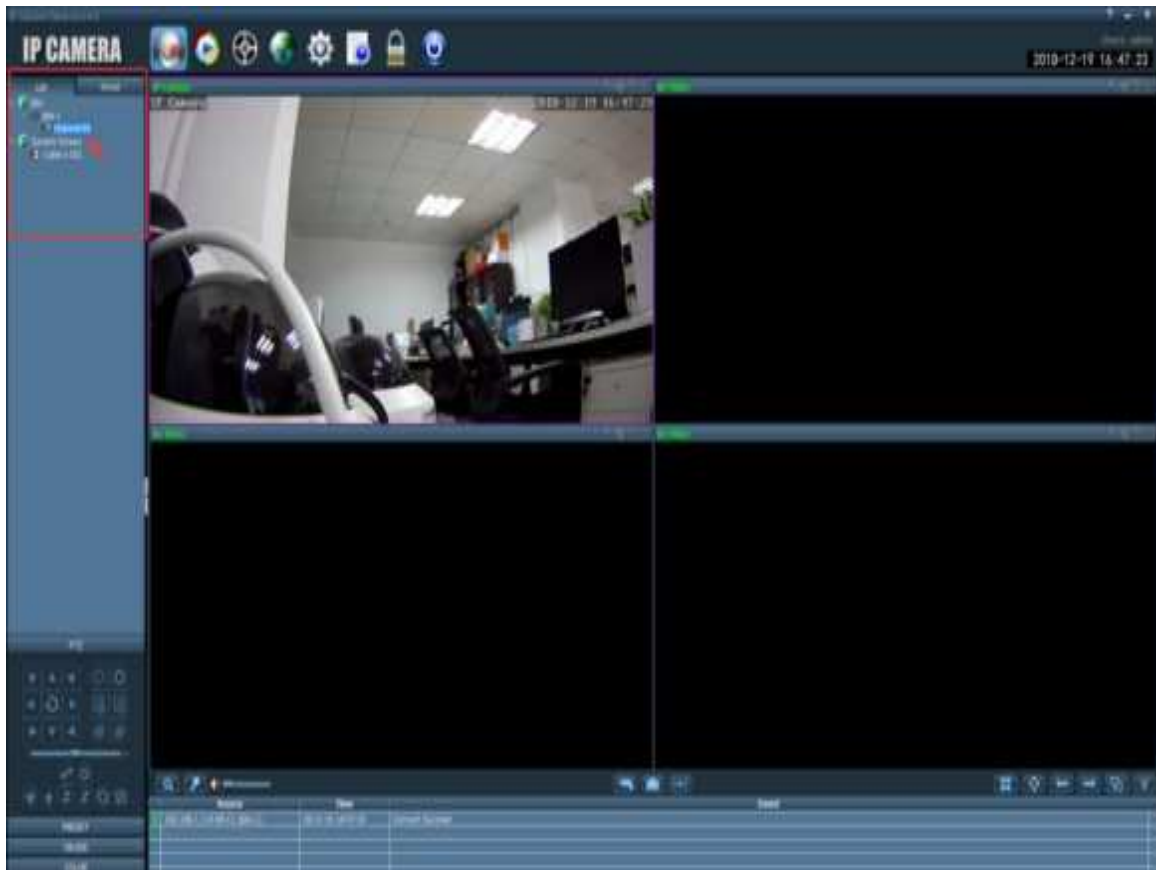
C) Click "Search" to find IP Camera in the LAN, Select the camera click "add" to Add camera.



D) Double Click camera's UID to modify camera's password. (Applicable after the camera is added to wifi, or after the camera has been connected to the network by cat5/6. You can access your camera anywhere by internet.).



E) Click  Back to preview screen, Double-click the camera name in the device list to preview the screen in real time. (Or right click on the connection pointed by the mouse)



Frequently Asked Questions

Q1: Remote viewing, appear pause and delay phenomenon?

- A:**1) Related to network data, it is recommended to adjust the HD mode to Smooth mode when watching, and the video file is still saved in HD mode.
- 2) Try to reduce the camera stream when view the video, reducing the stream may affect the quality of the image.
- 3) Remote viewing, the network recommends uploading network data up to 512KB/S. Download data 256KB/S to watch the best. Upload network data can be viewed in the router background.

Q2: Prompt password error

- A:** The camera security password is incorrectly entered or forgot the password. Press and hold the reset button for 5-8 seconds and then reset the camera.

Q3: No audio sound

- A:**1) Open the camera screen, click on the speaker and set to be monitored.
- 2) Open the volume setting, click on setting, click on audio settings, then adjustable volume.
- 3) The camera pickup range is 5-15 meters, depending on the volume of the recognized volume.

Q4: Camera IP address often changes

- A:**1) Login to web version and go to the camera setting, change the automatic IP address to manual setting.
2) The IP address which automatically obtain will vary depending on the IP assigned by your router's DHCP.

Q5: Is the device not online?

- A:**1) The router disables MAC address filtering.
2) If it is a dual-band router, it needs to use 2.4GWi-Fi and not support 5GWi-Fi.
3) The preferred server address (DNS) of the router is changed to the telecommunications service provider DNS.
4) Wi-Fi account password only contains numbers and letters, no horizontal characters and other special characters.
5) The router signal channel is changed to 11.

Q6: SD card remote playback download

- A:**1) Web download: Open the browser and log in, click the SD card and select recording date and time to download.
2) Mobile APP download: Open APP - click the video - click the remote playback - press the video file for 1-3 seconds to pop up a dialog box , click download, you can find the video file in the phone system file (CamHi file).

Q7: Can't identify the memory card?

- A:**1) Reinsert the SD card into the camera, powered off and restarted camera !
2) SD card is recommend to use SanDisk, Kingston, Samsung, Toshiba, PNY Bianwei, Lexar brand

Q8: Can't the phone search for the camera's own Wi-Fi?

- A:** Press the camera reset button for 5-8 seconds, make the camera reset factory default.

Q9: Can't the camera connect to Wi-Fi?

- A:**1) When the camera is configured, the phone and camera are no more than 3 meters away from the router!
2) Router Wi-Fi can't be hidden or MAC address bound, or limited!
3) Wi-Fi account password only contains numbers and letters, no special characters, such as horizontal lines.

Q10: RTSP Path Example

- A:** rtsp : //192.168.1.100 : 554/11

Q11: WBE browsing plug-in installation problem

- A:** Web page online download plug-in component: ActiveX, Or install the plug-in program in the CD!

Q12: Third party software: iSpy Software operation

- A:** iSpy Add camera selection: Open the software click add object, Select the IP photographer, Click ONVIF to enter the user name and password. URL enter: http:// camera IP address / port 8080. Click on the next page to see the full URL, click add, finish!

Q13: Can't connect to Optical Modem Wi-Fi router?

- A:** Recommend to use Wireless router, Some Optical Modem with Wi-Fi router has some kind of restriction, Cause the device can't connect to the wireless signal or no network transmission on the connection.

Q14: Can't play back remotely at phone APP?

- A:**1) Check that the device if can preview in real time!
2) Click the pinion symbol to enter the setting ---- Click on the SD card, check if can read the SD card.
3) Can preview the real-time picture normally, Can read the information of memory card, but no playback of files in video playback, recommend to unplug and plug the SD card again.
4) Because the remote playback of the video file is relatively large, Network does not support remote playback of network traffic! Recommend to connect your phone to a faster Wi-Fi, try remote playback.

Q15: Can't search for the camera IP address in the local area network.

A: Our device default IP address network segment 192.168.1.X, you need to modify your network IP address network segment to the same network segment, then use the search tool on the CD to search for IP addresses.

Q16: How to make the camera automatically cruise after setting the preset point?

A: Preset point 1-16 call command 41, 17-32 Calling Command 42, 65-80 Calling Command 43, 113-128 Calling Command 44, 128-144 Calling Commands 45, 146-160 call command 46, 161-176 Calling Command 47, 177-192 call command 48.

Q17: Mailbox alarm cannot receive pictures

A:1) Motion detection mailbox alarms support most mailboxes such as Google, Yahoo, etc. If you do not receive an email alert, please check if the mailbox settings are set according to the instructions, whether to pass the test.
2) Some alarm messages may be judged as spam by the mailbox, can be found in the mailbox trash or send mail delay due to network server data congestion, etc.

Q18: Can I add a camera to multiple phones?

A: Yes. Manually add the camera UID number to other mobile APP after the camera is connected to the network.

Q19: I can view the image on the same LAN, but the phone can't be viewed remotely outside.

A:1) The camera may be connected to your local area network without connecting to your router's external network, no network access! It is recommended to check if the router has set this camera IP to prohibit network access.
2) Restore factory settings, reset the router Wi-Fi and reconnect..

Q20: The phone can't access the Internet after the phone is connected to the camera wireless hot-spot.

A: The camera wireless hot-spot is convenient for the device to preview and view the image by mobile APP in a network-free environment and the phone can't access the external network by the wireless hot-spot.

