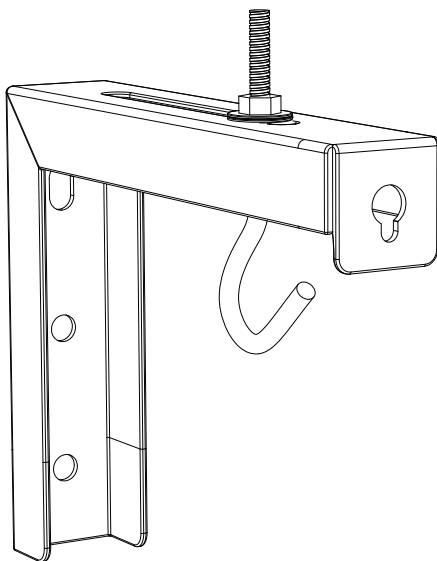
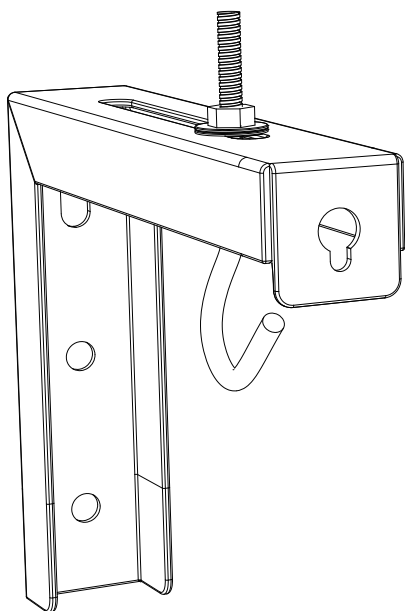




# 6" Projector Mount

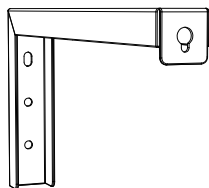


**PSM001-W**  
**PSM001-B**



[support@walelectric.com](mailto:support@walelectric.com)

## Supplied Parts List



Bracket  
A(x2)



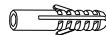
Hook  
B(x2)



Washer  
C(x4)

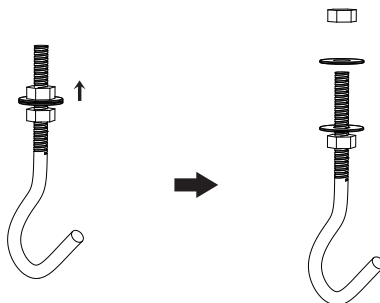


Bolt  
D(x4)

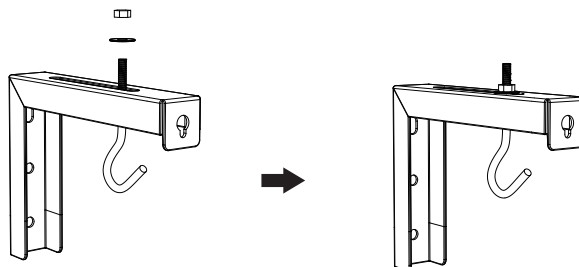


Anchor  
E(x4)

## Step 1



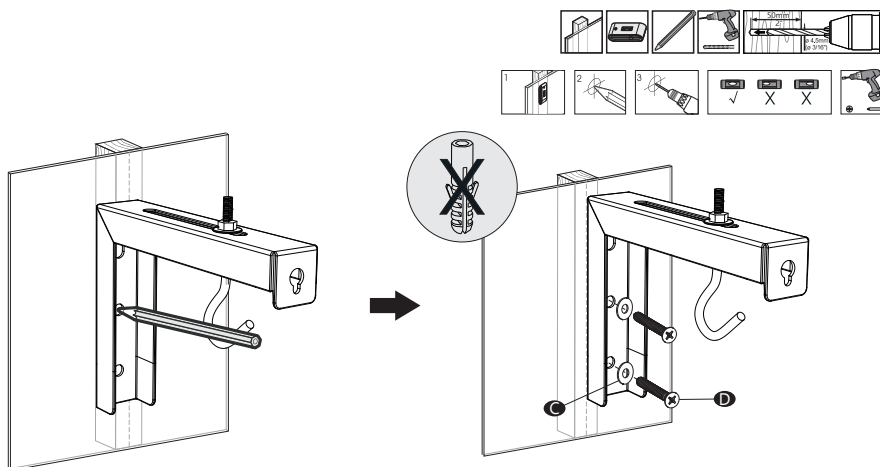
## Step 2



## Step 3

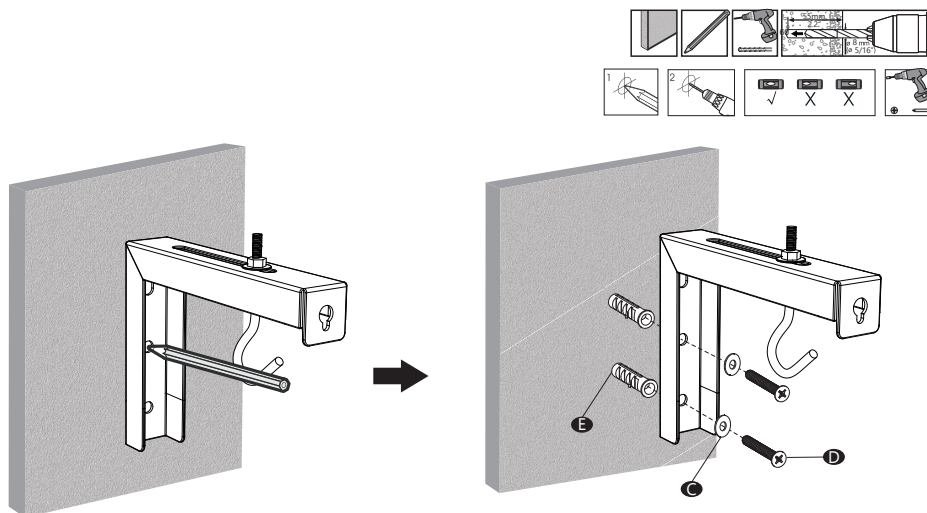
### Option A Wood Stud

Mark the position with your Bubble Level & pencil on the wall. Drill  $3/16"$  (4.5mm) diameter x 2" (50mm) length holes at the marked position, attach the mount to wood stud and tighten using Bolt **D** and Washer **C** with screwdriver. (Screwdriver not included)



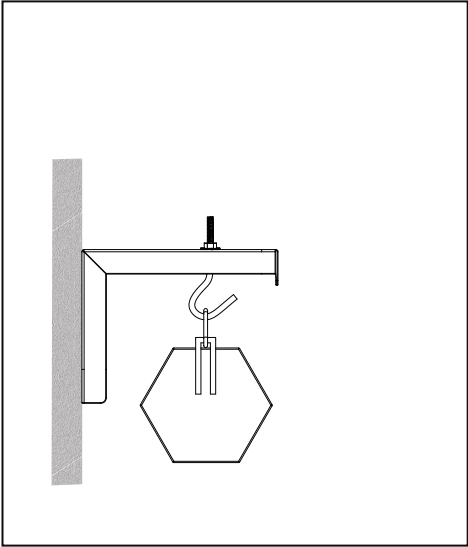
### Option B Concrete/brick Wall

Mark the position with your Bubble Level & pencil on the concrete wall. Drill  $5/16"$  (8mm) diameter x 2.2" (55mm) length holes at the marked position, Insert Anchors **E** and attach the mount to wall and tighten using Bolt **D** and Washer **C** with screwdriver. (Screwdriver not included)

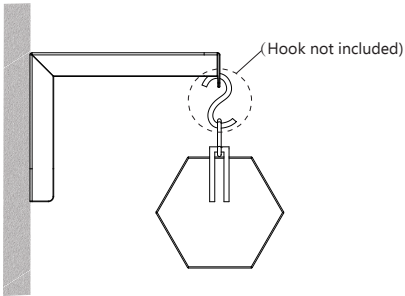


# Installation Options

## Option A Wall Installation



To install further away from the wall.



## Option B Ceiling Installation

 Securely mount to wood stud, brick or concrete ceilings. Can **NOT** mount to drywall.

