

## 8. RT510TX thermostat pairing with the receiver

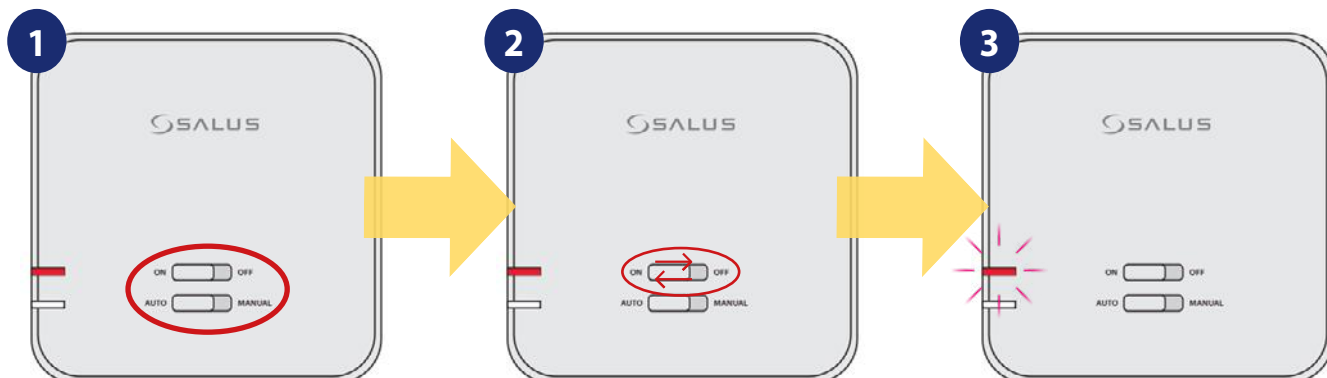
The word PAIRING in the user settings means the function of synchronizing the transmitter with the receiver again, if it has been removed.



### WARNING!

**IN THE SET RT510RF THE THERMOSTAT IS FACTORY PAIRED WITH THE RECEIVER!**

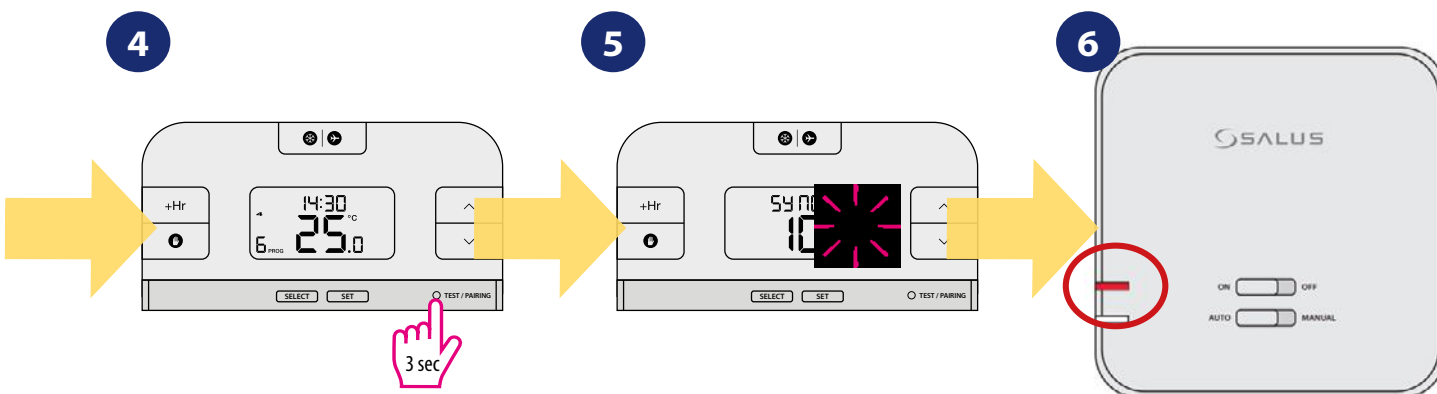
In order to pair the devices correctly, you must first prepare the receiver for synchronization!



If you want to re-pair the devices with each other, make sure that the receiver is disconnected from the power supply and the switches on it are in the AUTO and ON positions. Then connect the receiver to the power supply and wait for the red diode to glow continuously.

Move the top switch to the OFF position with a quick motion and back to the ON position.

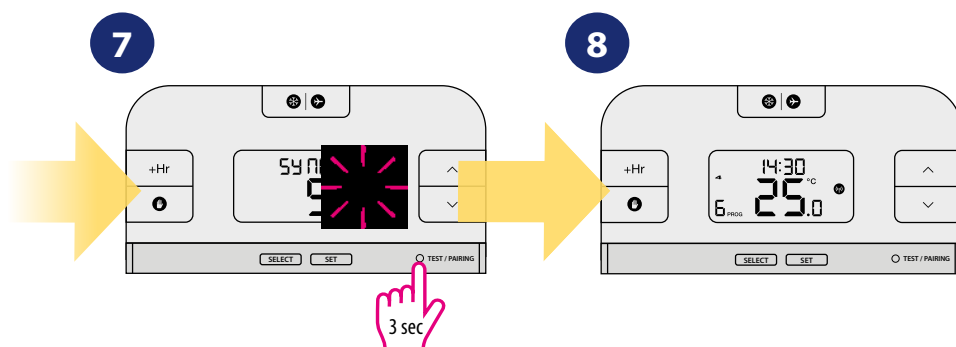
The red LED will start blinking, which will confirm that the receiver has entered the pairing mode.



Press and hold TEST / PAIRING button for 3 seconds.

Thermostat started pairing process. It can take up to 10 minutes.

When the red diode on the receiver lights up continuously, the devices have been paired on a new frequency.

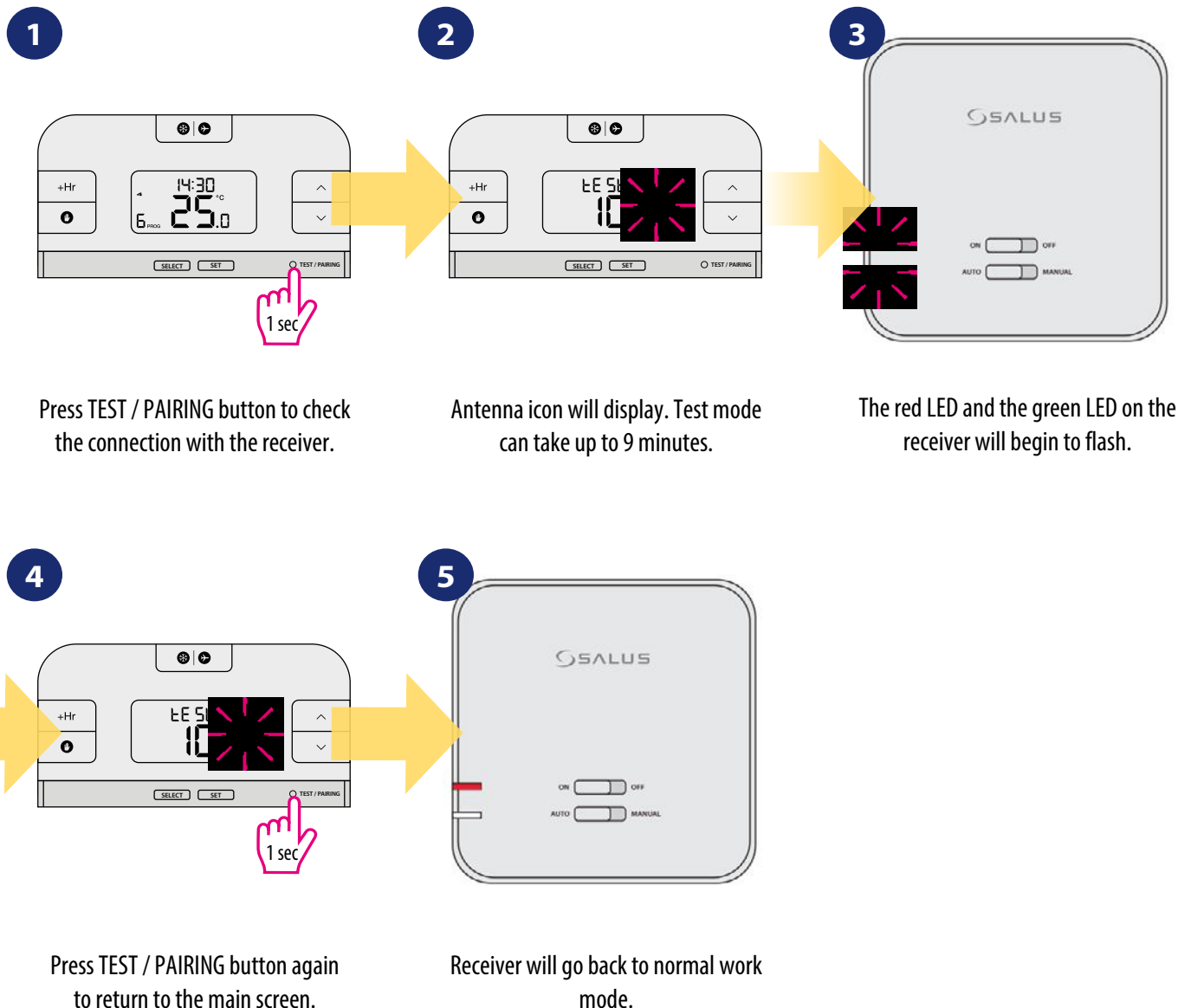


Press and hold TEST / PAIRING button for 3 seconds to end pairing process.

Thermostat will go back to the main screen and it has been paired successfully.

## 9. Test the pairing process

It is important to place the receiver and transmitter in places where nothing interferes with the radio signal. The range of communication between the transmitter and the receiver in an open area is up to 60m. The radio transmission is influenced by many factors that can shorten the working distance, such as thick walls, drywall covered with aluminum foil, metal objects such as cabinets, general radio interference, etc. However, the range is sufficient for most domestic use. It is recommended to test the radio transmission between devices before mounting the regulator on the wall. The test can be performed by changing the set temperature, i.e. by activating or deactivating the heating.



If you purchased an RXRT510 or RT510TX and intend pairing with other devices in the 5x5 range, please refer to the Receiver Units manual or the relevant manuals available at [www.salus-controls.eu](http://www.salus-controls.eu)