

REXING®

R88

User Manual

The information in this manual is subject to change without notice.

www.rexingusa.com

REV05062025

Activate Your

18-Month Warranty

& Unlock Exclusive Perks!

Activate within 30 days of purchase to
extend your limited 12-month warranty to 18 months
and unlock bonus rewards just for registered users.

Scan the QR to register &
discover your exclusive perks.



**SCAN
ME!**




<https://www.rexingusa.com/productreg/>

Overview

Thank you for choosing **REXING!**

We hope you love your new products as much as we do. If you need assistance, or have any suggestions to improve it, please contact us.

 **care@rexingusa.com**

 **(877) 740-8004**

Our support team will respond to you as soon as possible.

Always a surprise with Rexing

Check us out here.

- <https://www.facebook.com/rexingusa/>
- <https://www.instagram.com/rexingdashcam/>
- <https://www.rexingusa.com/support/registration/>

 Facebook



 Instagram



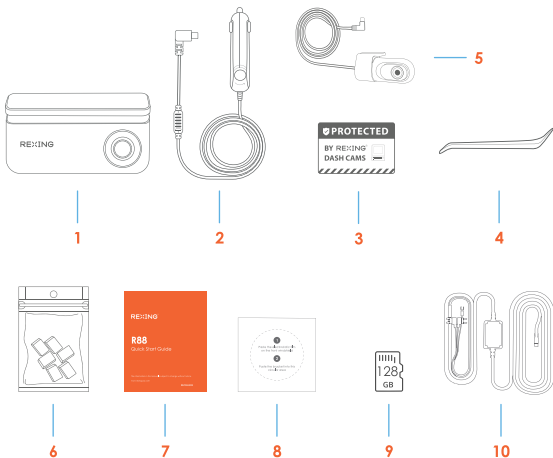
 Site



 Product Support

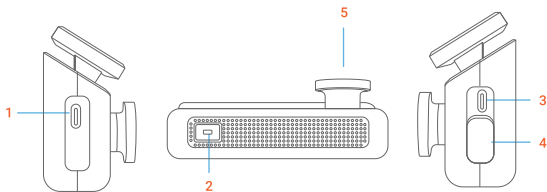


What's in the Box



1. Rexing R88 Dash Cam
2. Car Charger
3. Warning Sticker
4. Cable Management Tool
5. Rear Camera
6. Cable Clips
7. User Manual
8. Electrostatic Sticker
9. 128 GB MicroSD Card
10. Type-C Smart Hardwire Kit

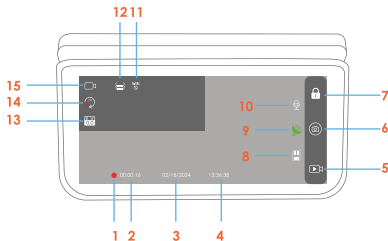
Camera Overview



1. USB C Charging Port
2. Power Button with indicator
3. Rear Camera Port
4. Micro SD Card Slot
5. Front Camera

* The device is charging or powered on when the indicator is solid purple.

Screen Icons



-
- | | |
|--|---------------------------|
| 1. Recording (On) | 9. GPS Status (Connected) |
| 2. Recording Time (Current Clip) | 10. Microphone (On) |
| 3. Date (Current) | 11. Wi-Fi (Off) |
| 4. Time (24-Hour Format) | 12. G-Sensor Level |
| 5. Start/Stop Recording | 13. Exposure |
| 6. Take Photo (when recording is ON)
/ Menu (when recording is OFF) | 14. Loop Recording |
| 7. File Lock (Manual) | 15. Recording Mode |
| 8. MicroSD Card (Inserted) | |
-

Installation

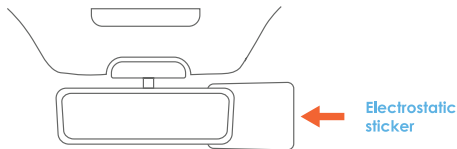
Step 1: Installing the Electrostatic Stickers

1.1 Prepare Your Windshield

Thoroughly cleanse your windshield with either water or alcohol. Follow this by wiping it dry using a clean, dry cloth to ensure a spotless surface.

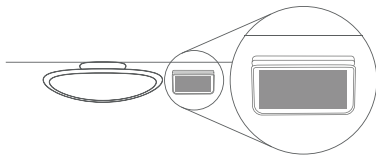
1.2 Position the Sticker

Next, carefully peel off the protective film from the electrostatic sticker. Attach the sticker to the windshield, ideally behind the rear-view mirror. This position is recommended to avoid obstructing your view while you're on the road.



Step 2: Install the Dash Cam

Place the dash cam onto the windshield and properly orient the mount piece to the roof and hood line of the vehicle.



Orient the mount as shown

Step 3: Insert the Memory Card

The Rexing R88 accepts [Class 10/ UHS-1 or higher] Micro SD memory cards up to 256GB. You **will** need to insert a memory card **before you can begin recording. Before inserting or removing a memory card, first ensure you've powered down the device.**



Gently push the memory card in until you hear a click, and allow the spring release to push the card out.

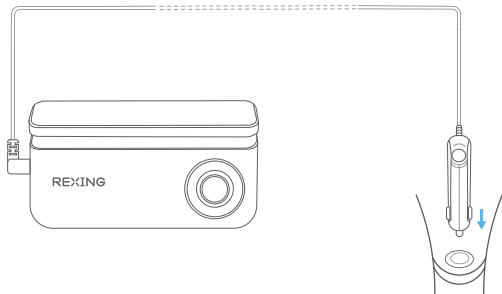


Step 4: Power the Camera and Format the Memory Card

Power the camera by connecting the charger to the car cigarette lighter and the camera

To ensure the R88 records to your memory card properly and without error. **Before you start using a new memory card, you must format the card within the camera using the format function.** Always backup important data stored on the memory card before formatting.

To format the memory card, make sure you have inserted your memory card, then **turn on the device by connecting to a power source**. Tap the  button to end recording. Then tap the  icon to enter the system setup menu, and tap Setup. Use the UP and DOWN buttons to navigate to the Format option, then tap OK to confirm the selection.

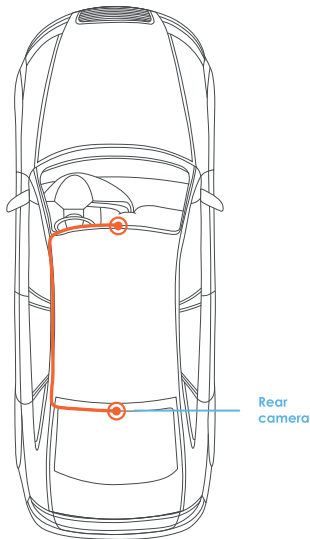


You may now disconnect from power. The camera will shut down after 3 seconds. The camera should begin recording automatically the next time it is powered on.



Step 5: Mount the Rear Camera

Mount the rear cameras as shown below. Use the provided camera cable to connect the rear cameras to the front camera.

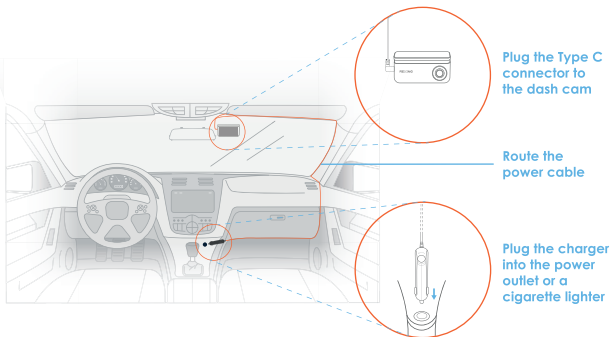


Step 6: Installing the Camera onto the Windshield

Carefully route the power cable around the windscreen and tuck in under the trim.

Plug the Car Charger Cable into a 12V DC power outlet or the car cigarette lighter.

Connect car charger to the camera. The camera will auto-start recording once powered on.



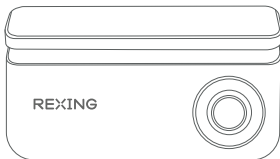
Basic Operation

Device Power

The device is automatically powered on when plugged into a 12V accessory socket or cigarette lighter and receives a charge (i.e.: the vehicle is started).



To turn the device on manually, press and hold the **POWER** button until the welcome screen appears.

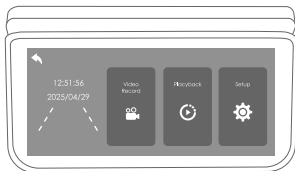
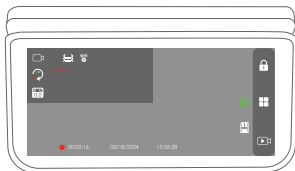
The camera will automatically start recording when powered on.



Press an hold the
POWER button to
turn the device on
manually


Menu Settings

Power the camera on. If the camera is recording, tap the  icon to end recording. Tap the  icon once to enter the setting menu for a mode. Then tap the Setup button to access the System Settings.

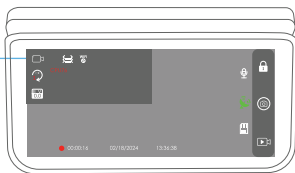


Video Recording

The camera will automatically begin recording when it receives power. A blinking red dot and indicator icon will appear on the screen while recording is in progress.

Tap the  icon to end the recording.

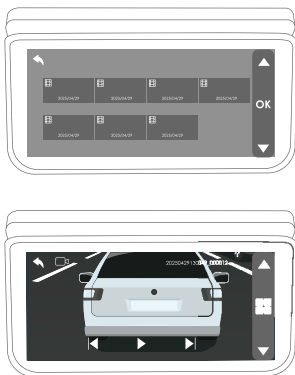
The camera automatically start recording when powered on



Video Playback

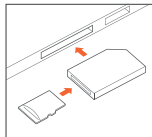
You can view recorded videos directly on the device or on a computer.

To play a video on the device, tap the  icon to enter Playback mode. Use the UP and DOWN icons to navigate to the desired video, then tap the OK icon to begin playback.



During playback use the **OK** (pause), **DOWN** (fast forward), and **UP** (rewind) buttons to control the video playback.

To playback a video on the computer, either use an SD card adapter.



To playback a video using an SD card adapter, remove the memory card and insert it into an SD card adapter. Place the adapter in the computer.

Parking Monitor (Parking Surveillance Mode)

Parking monitor provides surveillance on your parked vehicle. When the engine is off, the hardwire kit is used to provide continuous power and protect your car battery from being discharged.

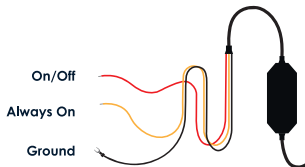
We kindly suggest taking a moment to watch our tutorial video. It's designed to help you have a smooth and successful installation experience. We believe you'll find it very helpful!

Please go to <https://www.rexingusa.com/ihwinstall> or scan QR code



Option 1: Vibration Detection

To enable the Parking Monitor, you'll need to connect it with a Rexing Type-C Smart Hardwire Kit (Included).



This feature will allow the dash cam to switch to parking mode automatically if the vehicle's engine turns off and switch back to the normal recording after the vehicle's engine turns on.

Gravity Sensing Record:

The Gravity Sensing detects significant or sudden movement (such as an impact or collision), it will trigger an event recording. We suggest setting the "Gravity Sensing" to High sensitivity for Parking Mode Recording.

Note:

If you do not use the parking mode function, please change the Gravity Sensing sensitivity to low. Otherwise, the video will easily be locked and the video cannot be deleted by the loop recording function. This will cause the memory card to be full of locked videos and cause the recorder to fail to work normally.

Please **DO NOT ENABLE** the Parking Monitor function in the settings of the dash cam **WITHOUT** connecting a smart hardwire kit. They may cause a malfunction.

Option 2: Motion Detection


To use this feature, you need to connect it with a Rexing 360° Intelligent Hardwire Kit (sold separately). Make sure that the Parking Mode is turned off on your dash cam.

Make sure that the Parking Mode is **turned off** on your dash cam, otherwise it may cause a malfunction.

Once the sensor has detected **MOTIONS**. The intelligent hardwire kit will power up the dash cam automatically and start recording until the **MOTION** is cleared.

Wi-Fi Connect

Step 1

With your dash cam powered on, tap the  icon to enter the settings menu. Then tap Setup to navigate to the Wi-Fi function.

The Wi-Fi name (SSID) and password for the dash cam will be displayed on the screen.

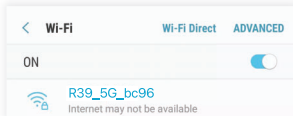


Step 2

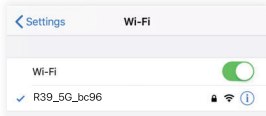
On your mobile device, navigate to your Wi-Fi settings. Connect to your dash cam's Wi-Fi by tapping its name when it appears. Enter your dash cam's Wi-Fi password if you are prompted to do so.

Note: On some mobile devices, you may have to try to connect more than once. To ensure you've successfully connected, your mobile device's screen should resemble the examples shown.

Samsung / Android Example



iPhone / iOS Example



Step 3

Once you're connected to the dash cam, open the REXING Connect app on your mobile device.

Please select "Keep Trying Wi-Fi" if you see the notification on the right.



Step 4

In the app, hit the "Connect" button to connect to your dash cam, allowing you to access live view and view/download your recordings.

Note: Tap the "WiFi Connected, Press to Exit" button to disconnect the Wi-Fi.



Rexing Connect App

Easily download the app by scanning the QR code below or search via the App Store or Google Play.



Wi-Fi Connect Troubleshooting

If you bring up the Rexing connect app and cannot connect your phone to the dash cam please go to <https://www.rexingusa.com/wifi-connect/> OR scan the QR code below.



GPS Logger

The dash cam will automatically search for the GPS signal once it's connected to the power source.

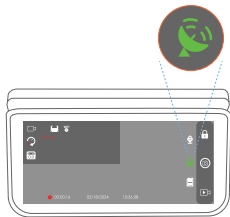
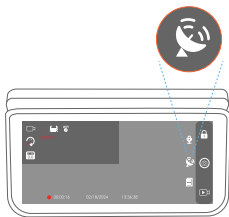
You can then access this information while playing back your recordings using the GPS Video player. For Windows and Mac, available at <http://www.rexingusa.com/support/rexing-apps/>.

Press the **MENU** button twice and enter the System Settings.

Toggle to the GPS Speed Unit setting and select your preferred speed unit.

After a GPS signal is found, the screen icon will turn from white to green.

Please visit gpsa.rexingusa.com to watch a video tutorial.



GPS Date-Time Troubleshooting

If your dash cam GPS date and time are incorrect please go to <https://www.rexingusa.com/gps-date-time/> OR scan the QR code below.



Warranty & Support

Warranty

The Rexing R88 Dash Cam comes with a limited 12-month warranty. If you register your product on our official site (<https://www.rexingusa.com/support/registration>), you can extend the limited warranty to 18 months.

Support

If you have any questions regarding your product, please do not hesitate to contact us at care@rexingusa.com, or call us at (877) 740-8004. Queries are typically answered within 12-24 hours.

Your opinion matters

Rexing is firmly committed to always improving our products, services, and user experience. If you have any thoughts on how we can do even better, we welcome your constructive feedback and suggestions.

Connect with us today at care@rexingusa.com

Thank you for choosing Rexing!

FCCID: 2AW5W-R88

This equipment has been tested and found to comply with the limits for a Class B digital device, pursuant to part 15 of the FCC Rules. These limits are designed to provide reasonable protection against harmful interference in a residential installation. This equipment generates, uses and can radiate radio frequency energy and, if not installed and used in accordance with the instructions, may cause harmful interference to radio communications. However, there is no guarantee that interference will not occur in a particular installation. If this equipment does cause harmful interference to radio or television reception, which can be determined by turning the equipment off and on, the user is encouraged to try to correct the interference by one or more of the following measures:

- Reorient or relocate the receiving antenna.
- Increase the separation between the equipment and receiver.
- Connect the equipment into an outlet on a circuit different from that to which the receiver is connected.
- Consult the dealer or an experienced radio/TV technician for help.

Caution: Any changes or modifications to this device not explicitly approved by manufacturer could void your authority to operate this equipment.

This device complies with part 15 of the FCC Rules. Operation is subject to the following two conditions:

(1) This device may not cause harmful interference, and (2) this device must accept any interference received, including interference that may cause undesired operation.

This equipment complies with FCC radiation exposure limits set forth for an uncontrolled environment. This equipment should be installed and operated with minimum distance 20cm between the radiator and your body.

REXING®



MADE IN CHINA