

ART+SOUND

Bluetooth

TV SOUND BASE
AR2010

User Manual

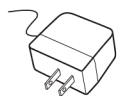


Bluetooth

In The Box



TV Sound Base



AC Adaptor



RCA Audio Cable



User Guide

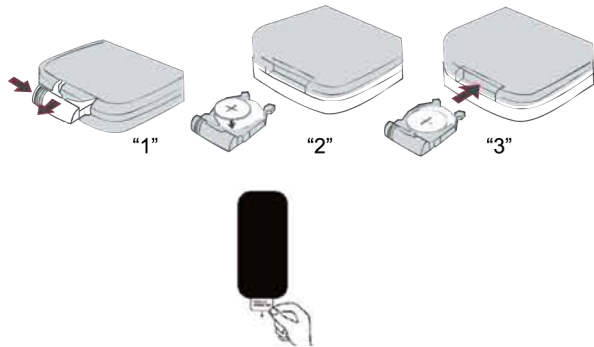


Remote Control

Installing The Battery

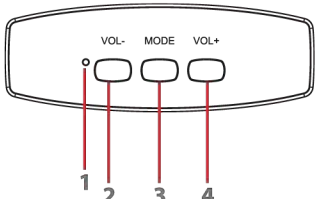
The battery for the remote control (1 CR2025 Lithium Battery) is included. To replace the battery, push and slide out the battery door on the remote control. Replace the battery with a new CR2025 battery with the positive (+) polarity facing up. Slide the battery door back in to the remote control.

NOTE: The AR2010 remote is packaged with a plastic protection tab. Before operating the remote, gently pull the protective tab extending out of the remote control's battery door.



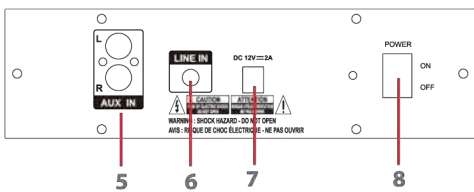
Location Of Controls

SIDE PANEL



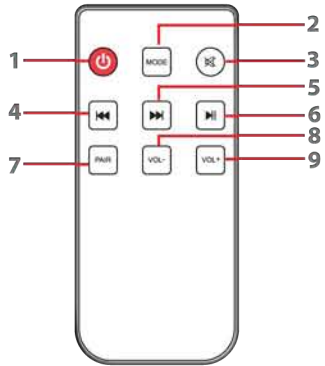
1. LED Bluetooth Indicator light
2. **[VOL-] button:** Quick press to decrease volume
3. **[MODE] button:** Switch between Aux-in and Bluetooth Mode
4. **[VOL+] button:** Quick press to increase volume

BACK PANEL



5. RCA aux-in Jacks
6. LINE-IN 3.5mm Auxiliary Jack
7. DC 12v Jack
8. Main Power ON/OFF Switch

REMOTE CONTROL



1. **[] Button:** Standby & Power / ON OFF.
2. **[MODE] Button:** Switch between aux-in and Bluetooth mode
3. **[] Button:** Mute volume.
4. **[] Button:** Quick press to skip to previous track (Bluetooth Mode)
5. **[] Button:** Quick press to skip to the next track (Bluetooth Mode)
6. **[] Button:** Quick press to play music. Quick press to pause while music is playing in Bluetooth Mode
7. **[PAIR] Button:** Press to enter Bluetooth Mode or disconnect from Bluetooth enabled device
8. **[VOL-] Button:** Quick press to decrease volume
9. **[VOL+] Button:** Quick press to increase volume

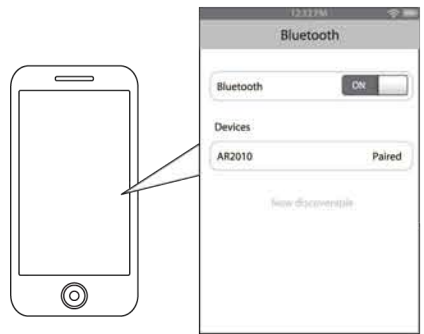
Pairing The Speaker With a Bluetooth-Enabled Device

1. Connect the AC Adaptor to the DC 12V jack on the back of the speaker.
2. Press the Main Power switch to the ON position. A tone will be heard and the LED Bluetooth indicator light will flash RED. The AR2010 is now in pairing mode.
3. Keep the speaker and your Bluetooth-enabled device within 3 feet of each other during the pairing process.
4. Set your mobile phone or other Bluetooth-enabled device to search for Bluetooth devices.



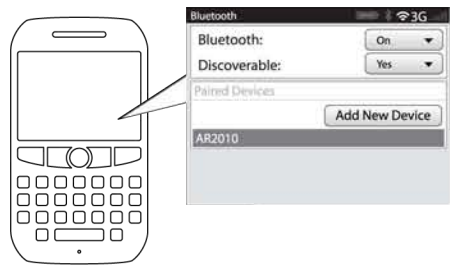
On an iPhone

- Go to SETTINGS > BLUETOOTH (Make sure Bluetooth is turned ON)



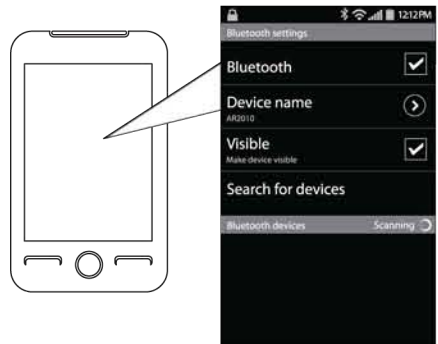
On a Blackberry

- Go to SETTINGS/OPTIONS > BLUETOOTH
- Enable BLUETOOTH (Make sure Bluetooth is turned ON)



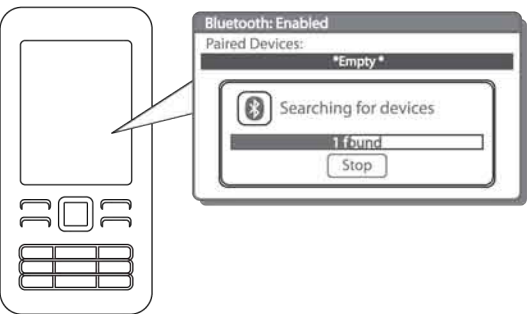
On an Android Phone

- Go to SETTINGS > BLUETOOTH > MENU > Search for devices (Make sure Bluetooth is turned ON)



On other Cell Phones/Devices

- Review the instruction manual that came with your phone/device.



5. When your Bluetooth-enabled device finds the speaker, select "AR2010" from the list of discovered devices.
6. If required, enter the password 0000. Select OK or YES to pair the two units.
7. After a successful pairing, the LED Bluetooth indicator light with slowly flash RED.

NOTE: If you would like to connect the speaker to another device, you must disconnect the speaker from the currently paired device first. On your device's Bluetooth settings, select "AR2010," then select "disconnect" or "unpair," or press the **[PAIR]** button on the remote control. When the speaker has been unpaired, repeat the pairing process.

The screenshots above are typical of many Bluetooth-enabled devices in the market today, and are used to assist in the explanation of the pairing process. Your Bluetooth-enabled device's interface and interaction with the speaker may differ slightly from the illustrations shown.

Using The TV Sound Base

Main Power ON/OFF Switch

- Turn on the AR2010 speaker using the **[]** button on the remote or by pressing the Main Power ON/OFF switch located on the back of the TV Sound Base.
- Make sure that the Bluetooth feature on your device is enabled. If you have not yet paired a mobile device to the AR2010, please see the "Pairing The Speaker With A Bluetooth-Enabled Device" section in this User Manual.

NOTE: Pressing the **[]** button on the remote control will activate the speaker or place it in Standby. The remote control cannot activate the speaker if the Main Power ON/OFF switch is on the OFF position.

Adjusting the volume

To adjust the sound level of your AR2010, quick press the **[VOL+]** or **[VOL-]** buttons on the TV Sound Base or the remote control to gradually increase or decrease the volume. **LONG PRESS** the volume buttons to quickly increase or decrease volume.

You can also adjust the volume from your connected device's volume control.

LINE-IN (3.5mm jack)

1. Connect a 3.5mm Auxiliary cable (not included) to the LINE-IN port on the back of the speaker.
2. Connect the other end of the 3.5mm Auxiliary cable into the headphone jack of your mobile phone, tablet or MP3 player.
3. Turn on the AR2010 speaker using the **[]** button on the remote or by pressing the Main Power ON/OFF switch located on the back of the speaker.
4. Press the **[MODE]** Button until aux-in mode is selected.
5. On your connected device press PLAY or START to begin playing music.
6. Use your connected device's audio controls to control playback.

Note: 3.5mm Auxiliary Cable is a 3.5mm headphone pin to a 3.5mm headphone pin. This is not included.

Aux-In (RCA jack)

1. Turn on the AR2010 speaker using the **[]** button on the remote or by pressing the Main Power ON/OFF switch located on the back of the speaker.
2. Press the **[MODE]** button until aux-in mode is selected.
3. Match up the white (L) and the red (R) plugs of the included RCA cables to the aux-in jacks on the back of the speaker.
4. Connect the other end of the RCA cables into the AUDIO-OUT jacks on your television.
5. Use your connected device's audio controls to control playback.

Note: When a device is plugged into the aux-in or LINE IN jack, the speaker and remote control buttons have limited function. You must use your connected device to control playback.

Only AUX-IN or LINE-IN can be used. If you have 2 devices connected, they will both play in AUX-IN mode. Either disconnect one or turn one OFF.

Troubleshooting Tips

My Bluetooth device is not able to pair with the TV Sound Base.

1. Make sure the Bluetooth Speaker is turned ON before beginning the pairing process.
2. Keep your TV Sound Base and Bluetooth-enabled device within 3 feet of each other during the pairing process.
3. Press the **[MODE]** Button on the speaker or remote control until the LCD display and voice prompt indicate that the speaker is in Bluetooth Mode.
4. Check that YOUR device's Bluetooth feature is turned ON.
5. Try repeating the pairing process. Refer to "Pairing The Speaker With A Bluetooth-Enabled Device."

I can pair the TV Sound Base with my Bluetooth device, but I cannot hear any music.

1. Make sure your Bluetooth device supports A2DP profile.
2. Turn up the volume on your Bluetooth device.
3. You may have to unpair the speaker, then re-pair to your device.

I cannot get the TV Sound Base into Pairing Mode.

1. Make sure the Bluetooth Speaker is turned ON before beginning the pairing process.
2. Press the **[MODE]** button on the speaker or remote control until the speaker is in Bluetooth Mode.
3. The speaker is now in pairing mode.

Safety Instructions

1. Read these instructions.
2. Keep these instructions.
3. Heed all warnings.
4. Follow all instructions.
5. Do not use this apparatus near water.
6. Clean only with a dry cloth.
7. Do not block any ventilation openings. Install in accordance with the manufacturer's instructions.
8. Do not install near any heat sources such as radiators, heat registers, stoves, or other apparatus (including amplifiers) that produce heat.
9. Do not defeat the safety purpose of the polarized or grounding-type plug. A polarized plug has two blades with one wider than the other. A grounding type plug has two blades and a third grounding prong. The wide blade or the third prong are provided for your safety. When the provided plug does not fit into your outlet, consult an electrician for replacement of the obsolete outlet.
10. Protect the power cord from being walked on or pinched particularly at plugs, convenience receptacles, and the point where they exit from the apparatus.
11. Only use attachments/accessories specified by the manufacturer.
12. Use only with a cart, stand, tripod, bracket, or table specified by the manufacturer, or sold with the apparatus. When a cart is used, use caution when moving the cart/apparatus combination during lightning storms or when unused for long periods of time.



13. Unplug the apparatus during lightning storms or when unused for long periods of time.
14. Refer all servicing to qualified service personnel. Servicing is required when the apparatus has been damaged in any way, such as power-supply cord or plug is damaged; liquid has been spilled or objects have fallen into the apparatus; the apparatus has been exposed to rain or moisture, does not operate normally, or has been dropped.
15. WARNING: The mains plug is used as a disconnect device; the disconnect device shall remain readily operable.
16. WARNING: To reduce the risk of fire or electric shock, do not expose this apparatus to rain or moisture. The apparatus shall not be exposed to dripping or splashing, and objects filled with liquids, such as vases, shall not be placed on apparatus.
17. This equipment is a Class II or double insulated electrical appliance. It has been designed in such a way that it does not require a safety connection to electrical earth.



The lightning flash with arrowhead symbol, within an equilateral triangle is intended to alert the user to the presence of uninitiated dangerous voltages within the products enclosure that may be sufficient magnitude to constitute a risk of electric shock to the person.

The exclamation point within an equilateral triangle is intended to alert the user to the presence of important operating and maintenance (servicing) instructions in the literature accompanying the appliance.

Additional Warnings And Precautions

Battery shall not be exposed to excessive heat such as sunshine, fire or the like. Danger of explosion if battery is incorrectly replaced. Replace only with the same or equivalent type.

CAUTION: TO PREVENT ELECTRIC SHOCK, MATCH WIDE BLADE OF PLUG TO WIDE SLOT, FULLY INSERT.

CAUTION: Use of controls or adjustments or performance of procedures other than those specified may result in hazardous radiation exposure.

WARNING: Changes or modifications to this unit not expressly approved by the party responsible for compliance could void the user's authority to operate the equipment.

WARNING: Do not place this unit directly onto furniture surfaces with any type of soft, porous, or sensitive finish. As with any rubber compound made with oils, the feet of this unit may cause marks or staining where they reside. We recommended using a protective barrier such as a cloth or a piece of glass between the unit and the surface to reduce the risk of damage and/or staining.

WARNING: Use of this unit near fluorescent lighting may cause interference regarding use of the remote. If the unit is displaying erratic behavior move away from any fluorescent lighting, as it may be the cause.

WARNING: Shock hazard - Do Not Open.

WARNING: TO REDUCE THE RISK OF ELECTRIC SHOCK, DO NOT REMOVE COVER (OR BACK). NO USER-SERVICEABLE PARTS INSIDE. REFER SERVICING TO QUALIFIED SERVICE PERSONNEL.

Legal Information

Caution: Any changes or modifications not expressly approved could void the user's authority to operate the equipment.

Note: This equipment has been tested and found to comply with the limits for a Class B digital device, pursuant to part 15 of the FCC Rules. These limits are designed to provide reasonable protection against harmful interference in a residential installation. This equipment generates, uses and can radiate radio frequency energy and, if not installed and used in accordance with the instructions, may cause harmful interference to radio communications. However, there is no guarantee that interference will not occur in a particular installation. If this equipment does cause harmful interference to radio or television reception, which can be determined by turning the equipment off and on, the user is encouraged to try to correct the interference by one or more of the following measures:

- Reorient or relocate the receiving antenna.
- Increase the separation between the equipment and receiver.
- Connect the equipment into an outlet on a circuit different from that to which the receiver is connected.
- Consult the dealer or an experienced radio/TV technician for help.

Limited Warranty

90 Days Limited Warranty

In the unlikely event that this product is defective, or does not perform properly, you may within ninety (90) days from your original date of purchase return it to the authorized service center for repair or exchange.

TO OBTAIN WARRANTY SERVICE:

- Call the Customer Support number located below, or go to our website portal to receive an SRO number.
- Provide proof of the date of purchase within the package (Dated bill of sale).
- Prepay all shipping costs to the authorized service center, and remember to insure your return.
- Include a return shipping address (no P.O. Boxes), a telephone contact number, and the defective unit within the package.
- Describe the defect or reason you are returning the product.

Your product will be repaired or replaced, at our option, for the same or similar model of equal value if examination by the service center determines this product is defective. Products received damaged as a result of shipping will require you to file a claim with the carrier.

The shipping address of the authorized service center is:

Southern Telecom, Inc.
Attention: Customer Service (2nd Floor)
14-C 53rd Street
Brooklyn, NY 11232

Should you have any questions or problems concerning this product, please contact our customer service department at:

Customer Support:
Phone: 1-877-768-8481
Monday-Friday 8AM-10PM(EST)

www.southern telecom.com
Click on "Product Support"

Warranty service not provided

This warranty does not cover damage resulting from accident, misuse, abuse, improper installation or operation, lack of reasonable care, and unauthorized modification. This warranty is voided in the event any unauthorized person opens, alters or repairs this product. All products being returned to the authorized service center for repair must be suitably packaged.

Limitation of Warranty:

• THE WARRANTY STATED ABOVE IS THE ONLY WARRANTY APPLICABLE TO THIS PRODUCT. ALL OTHER WARRANTIES, EXPRESS OR IMPLIED (INCLUDING ALL IMPLIED WARRANTIES OF MERCHANTABILITY OR FITNESS FOR A PARTICULAR PURPOSE) ARE HEREBY DISCLAIMED. NO VERBAL OR WRITTEN INFORMATION GIVEN BY AIT, INC. IT'S AGENTS, OR EMPLOYEES SHALL CREATE A GUARANTY OR IN ANY WAY INCREASE THE SCOPE OF THIS WARRANTY.

• REPAIR OR REPLACEMENT AS PROVIDED UNDER THIS WARRANTY IS THE EXCLUSIVE REMEDY OF THE CONSUMER. AIT, INC. SHALL NOT BE LIABLE FOR INCIDENTAL OR CONSEQUENTIAL DAMAGES RESULTING FROM THE USE OF THIS PRODUCT OR ARISING OUT OF ANY BREACH OF ANY EXPRESS OR IMPLIED WARRANTY ON THIS PRODUCT. THIS DISCLAIMER OF WARRANTIES AND LIMITED WARRANTY ARE GOVERNED BY THE LAWS OF THE STATE OF NEW YORK. EXCEPT TO THE EXTENT PROHIBITED BY APPLICABLE LAW, ANY IMPLIED WARRANTY OF MERCHANTABILITY OR FITNESS FOR A PARTICULAR PURPOSE ON THIS PRODUCT IS LIMITED TO THE APPLICABLE WARRANTY PERIOD SET FORTH ABOVE.

Some states do not allow the exclusion nor limitation of incidental or consequential damages, or limitations on how long an implied warranty lasts so the above limitations on exclusions may not apply to you. This warranty gives you specific legal rights, and you also may have other rights that vary from state to state.

The Bluetooth® word mark and logos are owned by the Bluetooth SIG, Inc.