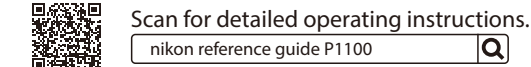


COOLPIX P1100

User's Manual (with Warranty)

- Read this document thoroughly before using the camera.
 - To ensure proper use of the camera, be sure to read "For your safety" (overleaf).
 - After reading this document, keep it readily accessible for future reference.
- No reproduction in any form of this document, in whole or in part (except for brief quotation in critical articles or reviews), may be made without written authorization from NIKON CORPORATION.



NIKON CORPORATION
© 2025 Nikon Corporation



Printed in Thailand
6MQ06911-01 En

Nikon Europe Service Warranty Card

Model name	Serial No.
COOLPIX P1100	Purchase date
Name and address of customer	
Dealer	
Distributor	Manufacturer
Nikon Europe B.V. The Garden, Stroombaan 14, 1181 VX Amsterdam, The Netherlands	NIKON CORPORATION 1-5-20, Nishi-ku, Shinagawa-ku, Tokyo 140-8601, Japan

Warranty terms - Nikon Europe service warranty

Dear Nikon customer,

We thank you for your purchasing this Nikon product. Should your Nikon product require warranty service, please contact the dealer from whom it was purchased or a member of our authorized service network within the sales territory of Nikon Europe B.V. (e.g. Europe/Russia/others). See details under: <https://www.nikoneurope.com>

In order to avoid any unnecessary inconvenience, we advise you to read the user manuals carefully before contacting the dealer or our authorized service network.

Your Nikon equipment is guaranteed against any manufacturing defects for one full year from the date of original purchase. If during this period of guarantee the product proves defective due to improper material or workmanship, our authorized service network within the sales territory of Nikon Europe B.V. will, without charge for labor and parts, repair the product in the terms and conditions set as below. Nikon reserves the right (at its sole discretion) to replace or repair the product.

1. This warranty is only provided upon presentation of the completed warranty card and original invoice or purchase receipt indicating the date of purchase, product type and dealer's name, together with the product. Nikon reserves the right to refuse free-of-charge warranty service if the above documents cannot be presented or if the information contained in it is incomplete or illegible.

2. This warranty will not cover:

- necessary maintenance and repair or replacement of parts due to normal wear and tear.
- modifications to upgrade the product from its normal purpose as described in user manuals, without the prior written consent of Nikon.
- transport costs and all risks of transport relating directly or indirectly to the warranty of the products.
- any damage resulting from modifications or adjustments which may be made to the product, without the prior written consent of Nikon, in order to comply with local or national technical standards in force in any other country than the ones for which the product was originally designed and/or manufactured.

3. The warranty will not be applicable in the case of:

- damage caused by misuse including but not limited to failure to use the product for its normal purpose or according to the user instructions on the proper use and maintenance, and to installation or use of the product inconsistent with the safety standards in force in the country where it is used.
- damage caused by accidents including but not limited to lightning, water, fire, misuse or neglect.
- defacing, illegibility or removal of the model or serial number on the product.
- damage resulting from repairs or adjustments which have been conducted by unauthorized service organizations or persons.
- defects in any system into which the product is incorporated or with which it is used.

4. This service warranty does not affect the consumer's statutory rights under applicable national laws in force, nor the consumer's right against the dealer arising from their sales/purchase contract.

Notice: An overview of all authorized Nikon Service Stations can be found online by following this Link
(URL = <https://www.nikoneurope.com>).

with WARRANTY

COOLPIX P1100 Model Name: N2323

Nikon user support

Should you need technical support, we offer a number of options.

- **For users in the U.S.A.:** <https://www.nikonusa.com/>
- **For users in Canada:** <https://www.nikon.ca/>
- **For users in Mexico:** <https://www.nikon.com.mx/>
- **For users in Latin America:** <https://www.nikonamericatina.com/>
- **For users in Europe:** <https://www.nikoneurope.com>
- **For users in Asia, Oceania, the Middle East, and Africa:** <https://www.nikon-asia.com/>

The COOLPIX P1100 *User's Manual* and *Reference Guide*

In addition to this *User's Manual*, a *Reference Guide* is available for your camera.

■ **The User's Manual (this sheet)**

The *User's Manual* describes basic camera operations.

■ **The Reference Guide**

Camera features and operations are detailed in a *Reference Guide*, a supplement to the *User's Manual*. The *Reference Guide* can be viewed on computers, smartphones, and tablets.

<https://onlinemanual.nikonimglib.com/p1100/en/>

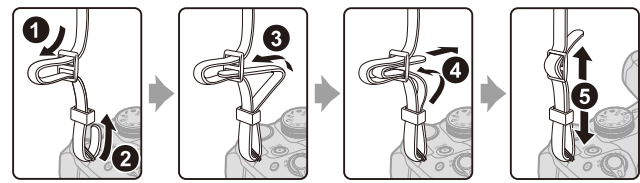
- | | |
|--|--|
| 1 Eyelief for camera strap | 20 Accessory terminal |
| 2 Command dial | 21 HDMI micro connector (Type D) |
| 3 Power switch/power-on lamp (charge lamp) | 22 USB connector |
| 4 Mode dial | 23 Speaker |
| 5 Microphone (stereo) | 24 Electronic viewfinder |
| 6 Built-in flash | 25 Eye sensor |
| 7 (flash pop-up) control | 26 (monitor) button |
| 8 Lens | 27 (AE-L/AF-L) button |
| 9 Control ring | 28 Focus-mode selector |
| 10 Zoom control | 29 (movie-record) button |
| 11 Self-timer lamp | 30 (playback) button |
| 12 Red-eye reduction lamp | 31 DISP (display) button |
| 13 AF-assist illuminator | 32 (apply selection) button |
| 14 Shutter-release button | 33 Rotary multi selector (multi selector) |
| 15 Fn (function) button | 34 (delete) button |
| 16 (snap-back zoom) button | 35 MENU (menu) button |
| 17 Side zoom control | 36 Battery-chamber/memory card slot cover |
| 18 (W: Wide-angle) | 37 Power connector cover (for optional AC adapter) |
| 19 (T: Telephoto) | 38 Tripod socket |
| 20 Accessory shoe | 39 Monitor |
| 21 Diopter adjustment control | |
| 22 External microphone connector cover | |
| 23 Connector cover | |

- The menu items displayed on the camera monitor are enclosed in [] (brackets).

Getting started

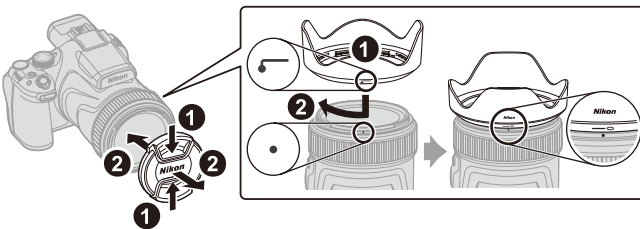
Attaching the strap

Attach the strap to the left and right side of the camera.



Attaching/removing the lens cap and lens hood

- When you are not shooting images, attach the lens cap to protect the lens.
- When the lens hood is attached, it cuts out light which adversely affects the image, and also helps protect the camera. Do not use the lens hood when shooting with a flash or when the AF-assist illuminator is necessary for shooting.
- Turn off the camera before attaching/removing the lens hood.



Inserting the battery and memory card

- 1 Open the battery-chamber/memory card slot cover.
-

- 2 Insert the battery and memory card.
- With the battery's positive and negative terminals oriented correctly, move the orange battery latch (1), and fully insert the battery (2).
- 3 Close the battery-chamber/memory card slot cover.
-

Charging the battery

Charge the supplied EN-EL20a Rechargeable Li-ion Battery before use. With the battery inserted in the camera, connect the camera to the optional EH-8P AC Adapter using the separately sold UC-E25 USB Cable (featuring Type C connectors at both ends) to charge the battery.

- The EH-8P AC Adapter cannot be connected using the supplied USB cable.

- Notes about using the battery
- Read and follow the warnings and cautions in "For your safety" (overleaf) and under "The battery" (overleaf) in "Caring for the product".

- 1 Insert the EN-EL20a into the camera.
- 2 Connect the separately sold UC-E25 USB Cable (featuring Type C connectors at both ends) to the camera, and then connect the optional EH-8P AC Adapter (1). Plug the AC adapter into a household power outlet. Keep the plug straight during insertion and removal.
-

- The power-on lamp (charge lamp) (2) flashes while the battery is charging. When charging is complete, the power-on lamp (charge lamp) turns off.
- An exhausted battery will fully charge in about 3 hours.
 - When charging is complete, disconnect the USB cable. Be sure to keep the connectors straight when disconnecting them.
 - The shape of the plug varies with the country or region of purchase.

- Notes about charging the battery
- The battery cannot be charged when the power-on lamp (charge lamp) quickly flashes, possibly due to one of the reasons described below.
 - The ambient temperature is not suited to charging.
 - The USB cable or AC adapter is not properly connected.
 - The battery is damaged.
 - The camera can be operated while the battery is charging, but the charging time increases. The power-on lamp (charge lamp) turns off while the camera is being operated.

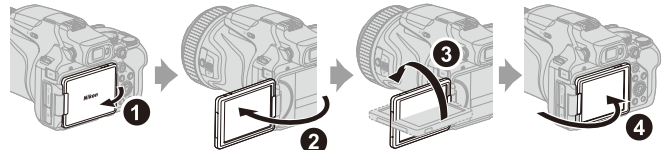
Tip: Charging the camera battery with the EH-73P Charging AC Adapter (available separately)

The camera battery can also be charged with the EH-73P Charging AC Adapter (available separately). Connect the supplied USB cable to the camera's USB connector, and then insert the plug into an electrical outlet. Keep the plug straight during insertion and removal.

- Tip: Charging with third-party AC adapters that are equipped with USB Type C connectors and are compliant with USB PD (power delivery) standards
- The camera battery can also be charged with third-party AC adapters. Use an AC adapter that complies with USB PD (power delivery) standards and is equipped with USB Type C connectors.
 - Use an AC adapter that supports output of 15 W (5 V/3 A) or more.
 - Use a USB cable that is Type C on both ends to connect to the camera.
 - We do not guarantee that all third-party AC adapters and USB cables are able to charge the camera battery.

Opening the monitor

When moving the monitor, do not apply excessive force and move slowly within the monitor's adjustable range so that the connection will not be damaged.



Camera setup

When the camera is turned on for the first time, screens to set the display language and camera clock are displayed.

- 1 Press the power switch to turn on the camera.
- 2 Press on the multi selector to highlight a language and press the button to select.
- The displayed languages vary depending on the country or region.
- 3 Select [Yes] and press the button.
- 4 Highlight your home time zone and press the button.
- To turn daylight saving time on, press will be displayed above the map. Press to turn daylight saving time off.
- 5 Press to select a date format and press the button.
- 6 Set the date and time.
- Press to highlight items and to change them.
 - Select the minute field and press the button to confirm the setting.
- 7 When prompted, press to highlight [Yes] and press the button.
- Setup is complete and the camera switches to the shooting screen.
-

Basic operations of shooting and playback

Shooting still images

(auto) mode is used here as an example. (auto) mode enables you to perform general shooting in a variety of shooting conditions.

- 1 Rotate the mode dial to .
- 2 Check the battery level (1) and number of exposures remaining (2) on the shooting screen.
- 3 Hold the camera steady.
- Keep fingers and other objects away from the lens, flash, AF-assist illuminator, eye sensor, microphone, and speaker.
- 4 Frame the picture.
- Move the zoom control or the side zoom control to change the zoom lens position.
 - To zoom in, move toward T (1).
 - To zoom out, move toward W (2).
-

- 5 Press the shutter-release button halfway.
- To press the shutter-release button "halfway" means to press and hold the button at the point where you feel a slight resistance.
- 6 Without lifting your finger, press the shutter-release button all the way down.
-

- Using a tripod
- After attaching the camera to a tripod, make sure that the camera does not fall over when zooming the lens in or out. Extend one leg of the tripod toward the subject and the other two legs toward you at an equal distance.
-

Recording movies

Display the shooting screen and press the (movie-record) button to start recording a movie. Press the button again to end recording.

Playing back images

- 1 Press the (playback) button to enter full-frame playback mode.
- 2 Use the multi selector to select an image to display.
- Use the multi selector to display the previous image, or to display the next image.
 - Press and hold down to scroll through the images quickly.
 - To play back a recorded movie, press the button.
 - To return to shooting mode, press the button or shutter-release button.
-

Caring for the camera

- Storage
- Remove the battery if the camera will not be used for an extended period. To prevent mold or mildew, take the camera out of storage at least once a month. Turn the camera on and release the shutter a few times before putting the camera away again.
- Do not store the camera in any of the following locations:
- Places that are poorly ventilated or subject to humidity of over 60%
 - Places exposed to temperatures above 50°C (122°F) or below -10°C (14°F)
 - Places next to equipment that produces strong electromagnetic fields, such as televisions or radios

Troubleshooting

You may be able to resolve any issues with the camera by following the steps below. Check this list before consulting your retailer or Nikon-authorized service representative.

- STEP 1 Check the list of common problems. Common problems and solutions are listed in the troubleshooting section of the *Reference Guide*.
- STEP 2 Turn the camera off and remove the battery, then wait about a minute, re-insert the battery and turn the camera on.
- The camera may continue to write data to the memory card after shooting. Wait at least a minute before removing the battery.
- STEP 3 Search Nikon websites.
- For support information and answers to frequently asked questions, visit the website for your country or region (see "Nikon user support" at the top left corner of this page).
 - To download the latest firmware for your camera, visit: <https://downloadcenter.nikonimglib.com/>
- STEP 4 Consult a Nikon-authorized service representative.

