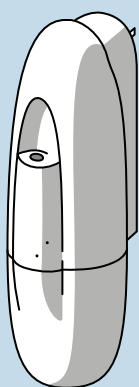


SCENT BETTER™ PRO

# WELCOME TO THE WORLD OF SCENT BETTER™

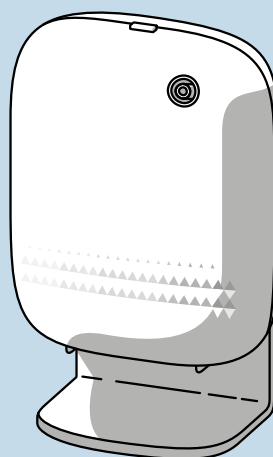
**Ready to transform your home with the power of scent?**

Our diffusers deliver long-lasting, premium fragrances that will create a welcoming and inviting atmosphere.



## SCENT BETTER™ PLUG IN

Compact & Convenient  
- Plugs directly into the wall, perfect for smaller spaces like entranceways, hallways, and bathrooms



## SCENT BETTER™ PRO

Freestanding  
Design - Ideal for  
spacious areas like  
living rooms and  
family spaces



Plug-and-play scent bottles are available in convenient 60 mL and 100 mL sizes.

# TABLE OF CONTENTS

Nebulization: The Future of Home Fragrance . . .	03
Tips For Optimal Scenting . . . . .	04
Schedule it and Enjoy it . . . . .	05
Scents. . . . .	06
What's Included . . . . .	08
Set Up . . . . .	09
Scent Better™ App . . . . .	.10
Troubleshooting . . . . .	.14
Additional Tips . . . . .	.15
Warranty & Contact Us . . . . .	.16
Regulatory Information . . . . .	.17

# NEBULIZATION: THE FUTURE OF HOME FRAGRANCE

## WHAT IS NEBULIZATION?

Imagine a gentle mist, so fine it floats in the air for hours. That's nebulization! Our cold-air diffusers use this premium technology to disperse fragrance oils in their purest form, without heat or water.

## WHY IS IT BETTER?

---

### WIDE COVERAGE

Our diffusers can fragrance spaces twice as large as traditional methods.

---

### CONSISTENT FRAGRANCE

Enjoy even scent distribution throughout your home.

---

### SMART CONTROL

Manage settings effortlessly via app control and Bluetooth connectivity.

---

### PURE SCENT

No dilution or heating means a cleaner, more authentic fragrance.

# TIPS FOR OPTIMAL SCENTING

## LOCATION MATTERS

### AIRFLOW

Place your diffuser where air can circulate freely.  
Avoid areas like vents, windows, and doorways.

### EXPERIMENT

Try different locations and intensity settings to find your ideal spot.

### CLEARANCE

Ensure at least 3 feet of clearance above the diffuser for optimal scent dispersion. (Pro Only)

---

## FINDING THE PERFECT INTENSITY

### BIGGER ROOMS NEED MORE

Larger spaces might require a higher intensity setting.

### START LOW AND GO SLOW

Begin with a low intensity setting and gradually adjust.

### LET IT SETTLE

Give the scent an hour to spread before tweaking the intensity setting.

## **SCHEDULE IT AND ENJOY IT**

### **SET AND FORGET IT**

Schedule your diffuser to automatically turn on and off at your desired times.

### **CUSTOMIZE YOUR EXPERIENCE**

Adjust scent intensity and set schedules to suit your routine.

### **SAVE ENERGY**

Run your diffuser only when you need it.

---

## **CHANGING THE SCENT**

### **SWITCH IT UP FOR A FRESH PERSPECTIVE**

Changing scents can revitalize your senses and create a new atmosphere. It's like adding a fresh coat of paint to your home, but without the hassle.

### **MATCH YOUR MOOD**

Different scents evoke different emotions. Whether you're feeling stressed, energized, or relaxed, there's a scent to match your mood and enhance your experience.

### **CREATE A SEASONAL AMBIANCE**

Change your scents with the seasons to create a festive or comforting atmosphere. For example, use warm, spicy scents in the fall and winter, and light, refreshing scents in the spring and summer.

# SCENTS

Scent Better™ is dedicated to crafting high-quality fragrances that inspire and uplift. Our scents are carefully curated to evoke positive emotions and transform your living space into a sanctuary of tranquility.

## KEY FEATURES

### MOOD-BOOSTING

Experience the power of scents to enhance your well-being.

### PREMIUM QUALITY

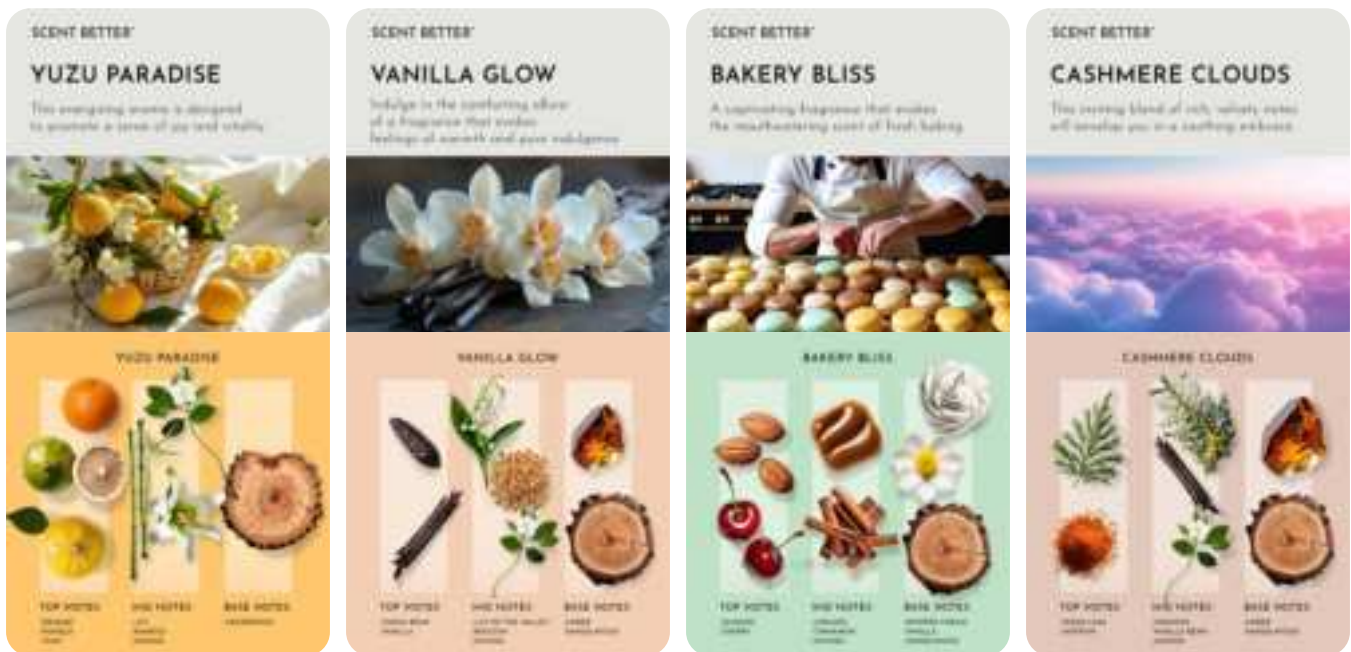
Crafted with the finest ingredients for a luxurious fragrance experience.

### PLAYFUL AND INVITING

Add a touch of personality to your home with our lively scents.

### VERSATILE

Perfect for any room, from living rooms to bedrooms.



## SCENTS

SCENT BETTER®

### LAVENDER WONDER

A captivating fragrance designed to promote relaxation and tranquility.



LAVENDER WONDER

TOP NOTES	MID NOTES	BASE NOTES
LAVENDER BERGAMOT	YELLOW JASMINE	CACAO VANILLA

SCENT BETTER®

### LINEN BREEZE

This delightful blend of tender, breezy, sunny, and musky creates a soothing yet uplifting aroma.




LINEN BREEZE

TOP NOTES	MID NOTES	BASE NOTES
CHARTREUSE APPLE BERGAMOT	LISSAPLE ORANGE ROSE	CACAO VANILLA SANDALWOOD

SCENT BETTER®

### SPA ESCAPE

An aromatherapeutic fragrance designed to promote wellness and good sleep.



SPA ESCAPE

TOP NOTES	MID NOTES	BASE NOTES
BERGAMOT LIME LEMON	YLANG YLANG ROSE ORANGE	CACAO VANILLA SANDALWOOD

SCENT BETTER®

### CHAMPAGNE DREAMS

It captures the essence of a celebratory toast and instantly uplifts your mood.



CHAMPAGNE DREAMS

TOP NOTES	MID NOTES	BASE NOTES
RED APPLE RASPBERRY	ROSE CINNAMON JASMINE	CACAO VANILLA SANDALWOOD

SCENT BETTER®

### WARM APPLE SUGAR

A harmonious blend of warm apple, rich vanilla, and comforting woody notes, creating a sweet and cozy ambience.



WARM APPLE SUGAR

TOP NOTES	MID NOTES	BASE NOTES
WARM APPLE CINNAMON VANILLA	ROSE CINNAMON JASMINE	CACAO VANILLA SANDALWOOD

SCENT BETTER®

### CHRISTMAS TREE FARM

The essence of a winter wonderland, bringing the comforting aroma of a freshly cut Christmas tree right into your home.

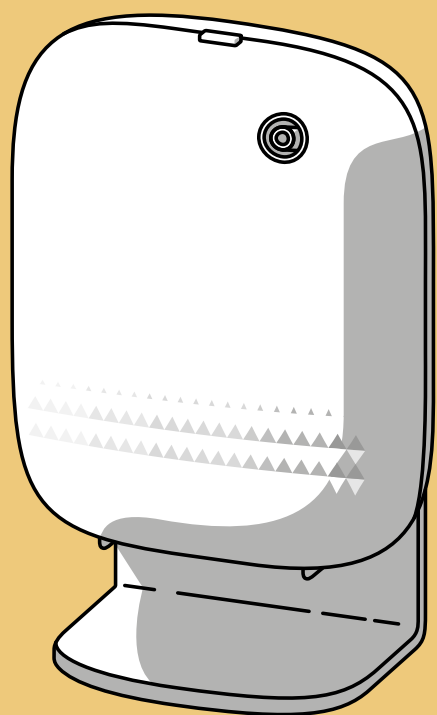


CHRISTMAS TREE FARM

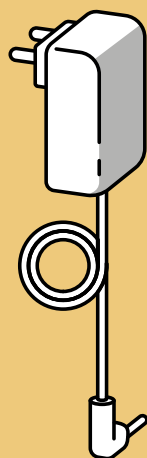
TOP NOTES	MID NOTES	BASE NOTES
BERGAMOT APPLE LIME	ROSE CINNAMON JASMINE	CACAO VANILLA SANDALWOOD



## WHAT'S INCLUDED



SCENT BETTER™  
PRO



POWER  
ADAPTOR



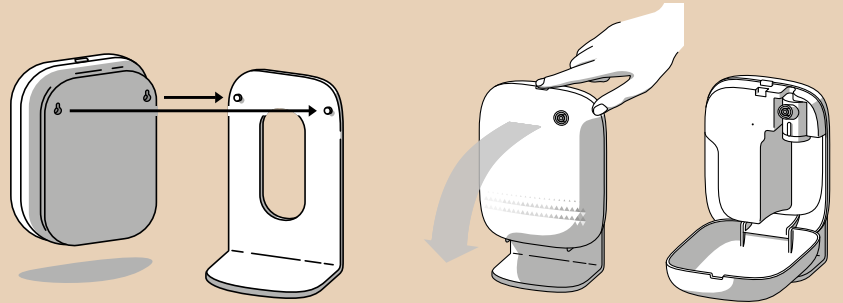
BONUS GIFT 60 ML  
LINEN BREEZE SCENT

# SET UP

## STEP 1

Mount your Scent Better™ Pro to the Stand via the keyhole slots.

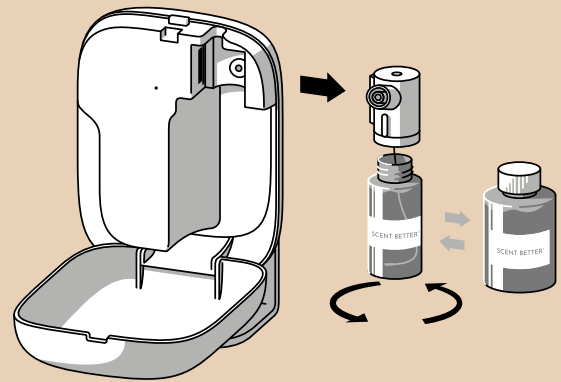
Press the top button to open your Scent Better™ Pro.



## STEP 2

Remove the Diffuser Nozzle from your Scent Better™ Pro and screw-in your Scent Better™ oil bottle.

For oil refills, both the Scent Better™ 60 mL and 100 mL sizes are compatible with your Scent Better™ Pro

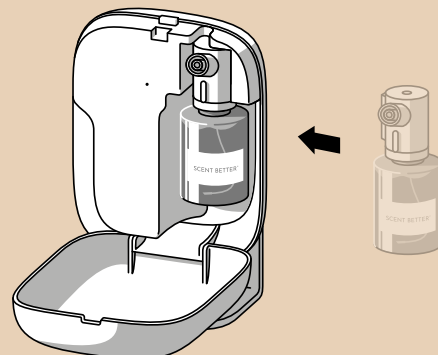


## STEP 3

Insert the Diffuser Nozzle with your Scent Better™ oil bottle back into your Scent Better™ Pro.

Close your Scent Better™ Pro, connect the power adapter, and enjoy.

Our scents are meant to be pure, please do not add water. For an optimal scenting experience, only use Scent Better™ oils.



# SCENT BETTER™ APP

## STEP 1

Download the Scent Better™ app from the Apple App Store (iOS) or Google Play Store (Android).



## STEP 2

Make sure your Scent Better™ Pro diffuser is plugged in.

Note: Your Scent Better™ Pro diffuser will start to diffuse upon being plugged in.

## SCENT BETTER™ APP

### STEP 3

Ensure Bluetooth is enabled on your phone.

Open the Scent Better™ app. You will receive a prompt to allow Bluetooth permissions for the Scent Better™ app.



### STEP 4

On the "Select your device" screen, select the diffuser you would like to set up.

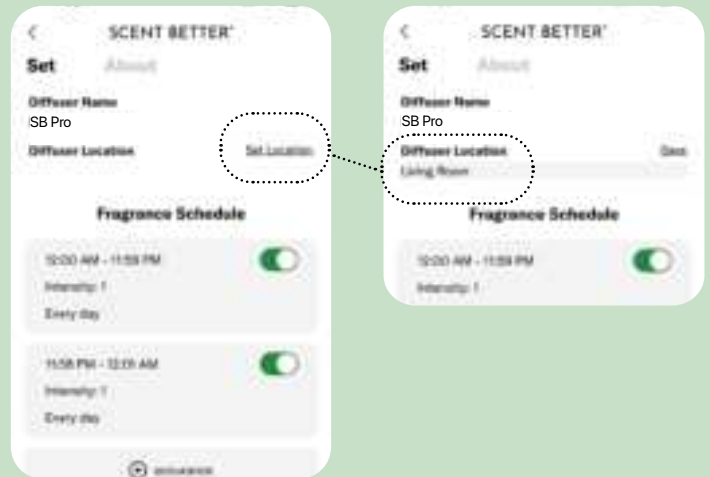


## SCENT BETTER™ APP

### STEP 5

After selecting the diffuser, continue to set up your schedule and intensity.

1. Select the “Set Location” button beside “Diffuser Location”.
2. Type in the desired location in the text box
3. Click “Save” to save changes.
4. Click “Edit” to make further changes.

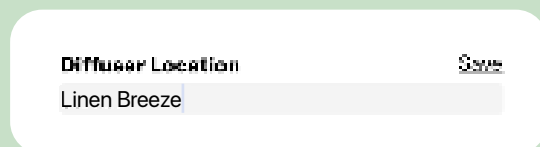


### DEVICE NAMING TIPS

Name your diffuser based on its location to easily identify and adjust schedules when using multiple diffusers.



Name your diffuser based on the scent you have diffusing. This ensures you remember what scent is installed in the diffuser.



## SCENT BETTER™ APP

### STEP 6

Below “Fragrance Schedule” you’ll see two default schedules which you can edit. You can have up to five schedules per diffuser.

To adjust and turn on any of the schedules:

Click on the grey area of the schedule you want to update.

Choose a desired start and end time.

Select the days for the scenting schedule.

Set the diffusing intensity level  
There are 4 intensity settings.

INTENSITY LEVEL	WORK TIME(S)	STOP TIME(S)
1	15 SEC	300 SEC
2	15 SEC	150 SEC
3	20 SEC	120 SEC
4	20 SEC	85 SEC

Save your edits by clicking “Save”. You’ll return to the main diffuser page.

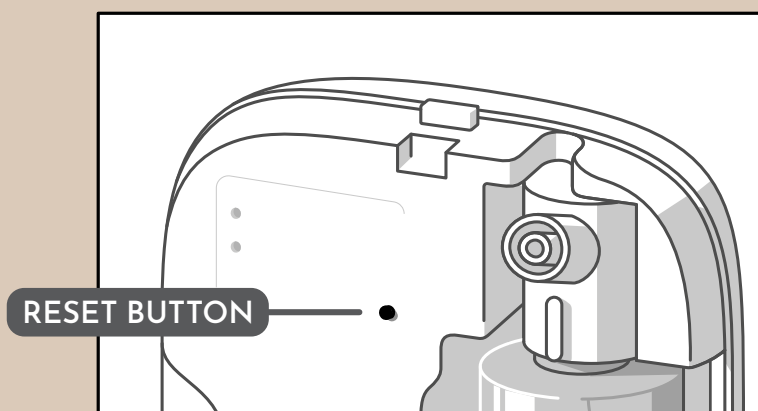
Continue editing each schedule until you’ve found the perfect set of schedules for your space and desired scenting experience.

# TROUBLESHOOTING

## RESETTING YOUR SCENT BETTER™ PRO

While your Scent Better™ Pro is connected to power, press and hold the reset button for 3 seconds.

Your Scent Better™ Pro will beep once to signal that it has been reset.



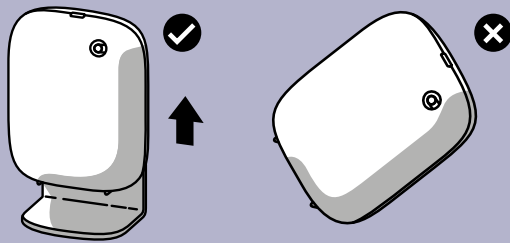
## ADDITIONAL TIPS

### SAFETY

Keep it out of reach of children and pets.

### KEEP UPRIGHT

Always keep your Scent Better™ Pro In upright to prevent oil spills.



### SURFACE PROTECTION

Avoid getting oil on wood or delicate surfaces.  
Clean spills promptly with a damp cloth.

### STABILITY

Place your diffuser on a flat, level surface.

### HEIGHT

Place the diffuser at least 2 feet off the ground.

### CAP STORAGE

Store the cap from the installed oil bottle in a safe place, for future use.

By following these tips, you can ensure your diffuser is working at its best and providing you with a delightful fragrance experience.



## WARRANTY & CONTACT US

All Scent Better™ designed diffusers come with a worry-free 1-year limited warranty from the date of purchase. This warranty includes ongoing support with your diffuser. If you have any questions or would like assistance with your diffuser please email us at [support@scentbetter.com](mailto:support@scentbetter.com) and we'll gladly assist you.

Scent Better™ is proud to offer repairs, including all labor and parts, necessary to ensure your diffuser is in proper working condition during the warranty period. Note that repairs and exchanges are at the discretion of the Scent Better™ team. We are here to support you, however, the warranty does not cover damages or repairs due to user error, or as a result of damage caused by third-party oils.

Curious about scents or need help? Contact us:

1-602-842-9554

[support@scentbetter.com](mailto:support@scentbetter.com)

# REGULATORY INFORMATION

## UNITED STATES

This device complies with Part 15 of the FCC Rules.

Operation is subject to the following two conditions:

1. This device may not cause harmful interference, and
2. This device must accept any interference received, including interference that may cause undesired operation.

### FCC Warning

Changes or modifications not expressly approved by the party responsible for compliance could void the user's authority to operate the equipment.

Note: This equipment has been tested and found to comply with the limits for a Class B digital device, pursuant to part 15 of the FCC Rules. These limits are designed to provide reasonable protection against harmful interference in a residential installation. This equipment generates, uses and can radiate radio frequency energy and, if not installed and used in accordance with the instructions, may cause harmful interference to radio communications. However, there is no guarantee that interference will not occur in a particular installation. If this equipment does cause harmful interference to radio or television reception, which can be determined by turning the equipment off and on, the user is encouraged to try to correct the interference by one or more of the following measures

- Reorient or relocate the receiving antenna.
- Increase the separation between the equipment and receiver.
- Connect the equipment into an outlet on a circuit different from that to which the receiver is connected.
- Consult the dealer or an experienced radio/TV technician for help.

### Radiation Exposure Statement

This product complies with the FCC portable RF exposure limit set forth for an uncontrolled environment and is safe for intended operation as described in this manual. Further RF exposure reduction can be achieved if the product can be kept as far as possible from the user body or set the device to lower output power if such function is available.

## CANADA

This device contains licence-exempt transmitter(s)/receiver(s) that comply with Innovation, Science and Economic Development Canada's licence-exempt RSS(s).

Operation is subject to the following two conditions:

1. This device may not cause interference;
2. This device must accept any interference, including interference that may cause undesired operation of the device.

The digital apparatus complies with Canadian CAN ICES-3 (B)/NMB-3(B).

### Radiation Exposure Statement

This device meets the exemption from the routine evaluation limits in section 2.5 of RSS 102 and compliance with RSS 102 RF exposure, users can obtain Canadian information on RF exposure and compliance. This equipment complies with Canada radiation exposure limits set forth for an uncontrolled environment. This equipment should be installed and operated with a minimum distance of 20 cm between the radiator and your body.

Cet appareil contient des émetteurs/récepteurs exempts de licence qui sont conformes aux RSS exemptés de licence d'Innovation, Sciences et Développement économique Canada.

L'exploitation est soumise aux deux conditions suivantes:

- Cet appareil ne doit pas provoquer d'interférences;
- Cet appareil doit accepter toute interférence, y compris les interférences susceptibles de provoquer un fonctionnement indésirable de l'appareil.

L'appareil numérique du ciem conforme canadien peut CAN ICES-3 (B)/NMB-3(B).

### Déclaration d'exposition aux radiations

Cet appareil est conforme à l'exemption des limites d'évaluation courante dans la section 2.5 du cnr - 102 et conformité avec rss 102 de l'exposition aux rf, les utilisateurs peuvent obtenir des données canadiennes sur l'exposition aux champs rf et la conformité. Cet équipement est conforme aux limites d'exposition aux rayonnements du Canada établies pour un environnement non contrôlé. Cet équipement doit être installé et utilisé à une distance minimale de 20 cm entre le radiateur et votre corps.

SCENT BETTER™

[scentbetter.com](https://scentbetter.com)

1-602-842-9554

[support@scentbetter.com](mailto:support@scentbetter.com)

11435 W Buckeye Rd, Suite 104-433  
Avondale AZ 85323, United States

© 2025 Scent Better Solutions Inc.