



Espresso Coffee Machine

with Milk Tank

KAZOCCOFFMTA & KAZOCCOFFMTB

Safety & Warnings	3
Overview	5
Before First Use	6
Operation	9
Cleaning & Care	14
Troubleshooting	18
Notes	19

Safety & Warnings

- Before using this appliance, follow these basic precautions:
- Read all instructions carefully and retain this user guide for future reference.
- Ensure the electrical outlet voltage matches the rated voltage on the appliance's rating plate.
- This appliance is equipped with a grounded plug. Confirm that the electrical outlet is properly grounded.
- To protect against fire, electric shock, or injury, do not immerse the cord, plug, or appliance in water or any other liquid.
- Unplug the appliance from the electrical outlet before cleaning and when not in use. Allow the appliance to cool completely before removing or attaching components, or before cleaning.
- Do not operate the appliance if the cord or plug is damaged, or if the appliance malfunctions, is dropped, or is damaged in any way. Cease use immediately and contact **help.Kogan.com** for support.
- Using accessories not recommended by Kogan.com may result in fire, electric shock, or injury.
- Place the appliance on a flat, stable surface. Do not let the power cord hang over the edge of a table or counter.
- Ensure the power cord does not touch hot surfaces.
- Do not place the coffee machine on a hot surface or near a fire to avoid damage.
- To disconnect, turn the 'Power' switch to the 'OFF' position, then remove the plug from the electrical outlet. Always hold the plug when unplugging; never pull the cord.
- Use the appliance only as intended, and always in a dry environment.
- Close supervision is required when the appliance is used by or near children.
- Be cautious of steam to avoid burns.
- Do not touch hot surfaces, such as the steam wand and the steel mesh after boiling. Use handles or knobs.
- Do not operate the coffee machine without water in the reservoir.
- Scalding may occur if the water reservoir is removed during the brewing cycle.
- Do not remove the metal funnel while the appliance is brewing or when steam and hot water are escaping from it.
- Ensure the plug is connected to an electrical outlet before use and turn any switch off before unplugging from the electrical outlet.

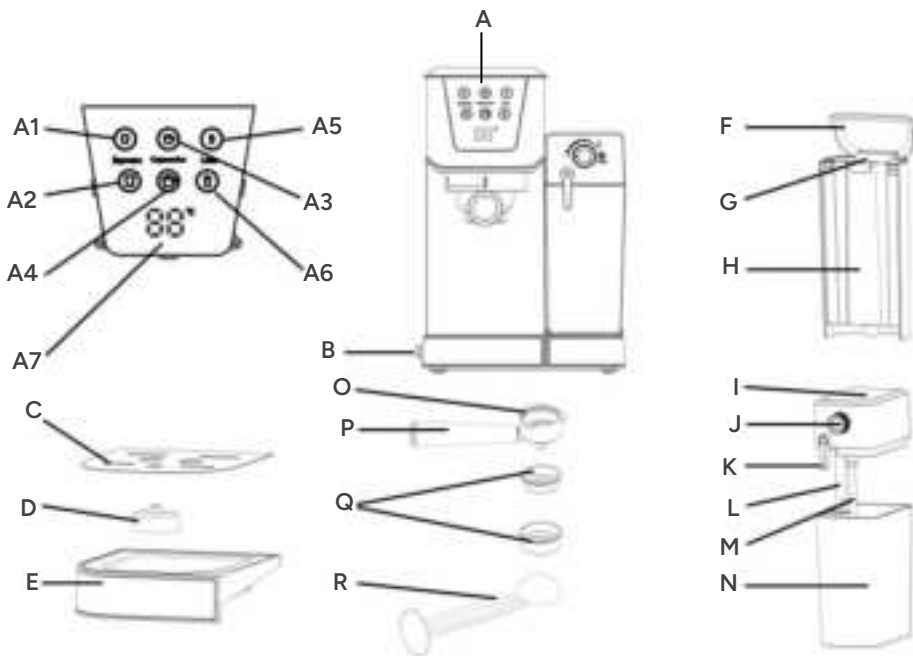
- Release pressure through the steam wand before removing the reservoir cover or metal funnel.
- This appliance is not intended for use by persons (including children) with reduced physical, sensory, or mental capabilities, or a lack of experience and knowledge, unless supervised or instructed by a responsible person.
- Children should be supervised to prevent them from playing with the appliance.
- This appliance is intended for household and similar applications such as:
 - Staff kitchen areas in shops, offices, and other working environments
 - Farmhouses
 - Bed and breakfast-type environments
- Do not use outdoors.
- Do not place on or near a hot gas or electric burner, or in a heated oven.

Disposal



This marking indicates that this appliance should not be disposed with other household wastes. To prevent possible harm to the environment or human health from uncontrolled waste disposal, recycle it responsibly to promote the sustainable reuse of material resources.

Overview



A	Control Panel	G	Water Reservoir Handle
A1	Single Espresso	H	Water Reservoir
A2	Double Espresso	I	Milk Reservoir Lid
A3	Small Cappuccino	J	Froth Control Knob
A4	Large Cappuccino	K	Frothing Tube Guide Lever
A5	Small Latte	L	Frothed Milk Dispensing Tube
A6	Large Latte	M	Milk Hose
A7	Temperature Display	N	Milk Reservoir
B	Power Switch (I/O)	O	Portafilter
C	Removable Drip Grid	P	Portafilter Handle
D	Drip Tray Overflow Floater	Q	Coffee Filter (Single Shot and Double Shot)
E	Removable Drip Tray	R	Measuring Scoop/Tamper
F	Water Reservoir Lid		

Before First Use

Cleaning The Unit Prior To First Use

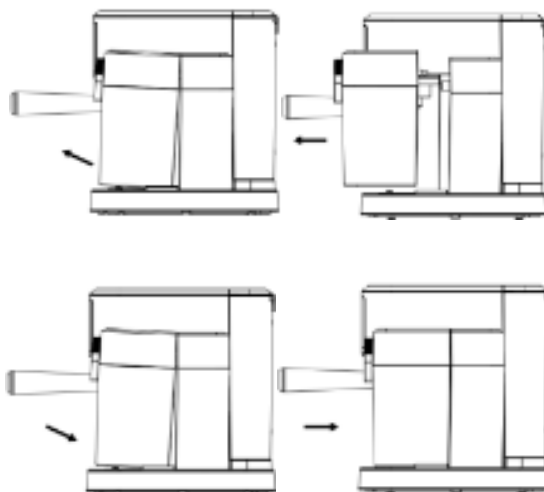
Before using the product for the first time, clean it to ensure optimal performance.

1. Ensure the unit is turned off ('O') by pressing the on/off 'I/O' switch located on the left side of the unit, and ensure it is unplugged from the electrical outlet.
2. Remove any stickers and labels from the unit.
3. Remove the water reservoir, milk reservoir, portafilter, two filters, and the measuring scoop/tamper. Wash them in a solution of mild detergent and water, rinse thoroughly, and replace them in the unit.
4. Refer to the 'Placing the Portafilter' section before inserting or removing the portafilter and filters.
5. To clean the inside of the appliance, follow the steps in the 'Preparing Cappuccino' section, using only water in both reservoirs and leaving the filter empty. Do not immerse the main body, power cord, or plug in water or attempt to access internal parts.

Important - Priming the Unit

To prime the unit and ensure optimal performance, run the steam cycle by following these steps:

1. Fill the water reservoir with purified water to a level between the 'MIN' and 'MAX' marks.
2. Fill the milk reservoir, ensuring the level does not exceed the 'MAX' mark. Insert the milk reservoir by lifting and sliding it in while holding the lid. You should feel it lock into place.



3. Select a filter and place it in the portafilter. Insert the portafilter into the unit, ensuring it is properly locked, and position a cup underneath. Ensure the milk foam distribution pipe is directed into the cup.
4. Plug the coffee machine into an electrical outlet.
5. Turn the power switch to the 'I' position.
6. The 6 control panel indicators will illuminate. Once all indicators are on, the unit is ready for use.

Note:

If the milk reservoir cannot be detached in correct position, the cappuccino and latte indicators will not illuminate.

Choosing The Right Cup

Beverage Type	Suggested Cup Size			
Espresso	Single	50ml	Double	100ml
Cappuccino	Small	180ml	Large	350ml
Latte	Small	340ml	Large	450ml

Note:

The upper surface capacity is for selection only, not for coffee consumed. The total amount of the beverage can vary depending on the type of milk and level of froth.

Choosing The Right Coffee

The Coffee

- For the best results, use freshly ground, dark-roasted coffee, such as a French or Italian roast ground for espresso.
- Pre-ground coffee retains its flavour for 7-8 days if stored in an airtight container in a cool, dark area. Avoid storing coffee in the refrigerator or freezer.
- Whole beans are recommended, as grinding them just before use preserves their aroma and flavour for up to 4 weeks when stored in an airtight container.

The Grind

Grinding is essential to the espresso-making process, especially if grinding beans at home. The coffee should be finely ground:

- The ideal grind resembles table salt.
- If the grind is too fine, water won't flow through the coffee, even under high pressure. These grinds resemble powder and feel like fine salt when rubbed between fingers.
- If the grind is too coarse, water flows too quickly, preventing full-flavour extraction. Use a quality grinder to ensure a consistent grind.

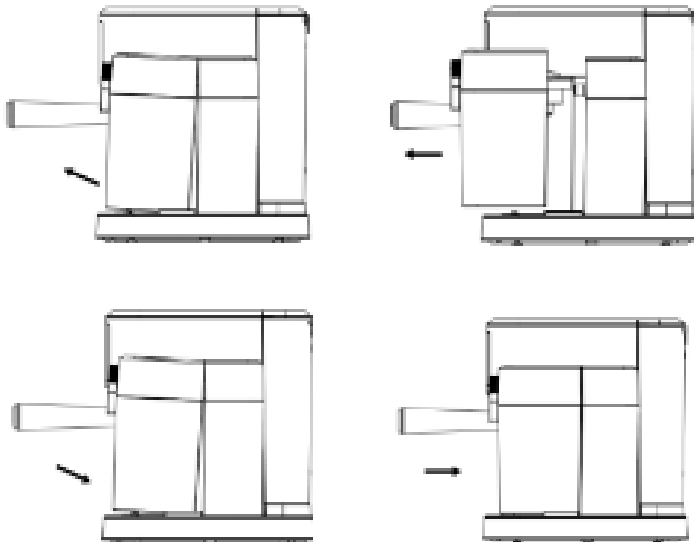
Operation

Filling the Water Reservoir

- Fill the water reservoir with fresh, cold water. You may use a pitcher to pour water directly into the reservoir or remove the reservoir from the unit and fill it under the tap. Ensure the water level stays below the 'MAX' mark. Avoid using warm or hot water.
- Close the water reservoir lid securely. If you removed the reservoir to fill it, ensure it is firmly reattached.

Filling the Milk Reservoir

1. If you plan to make a cappuccino or latte, remove the milk reservoir by lifting and sliding it out.
2. Pour the desired amount of cold milk into the reservoir, keeping the level below the 'MAX' mark.
3. Slide the reservoir back onto the unit until it locks securely in place.

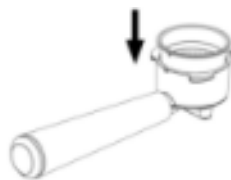


Choosing the Filter

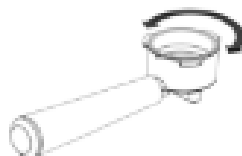
- **Single Shot:** Use the single shot filter when making one espresso shot with ground coffee.
- **Double Shot or Two Single Shots:** Use the double shot filter to prepare a double espresso or two single shots. If making two single shots, position two small cups under the portafilter.

Placing the Filter on the Portafilter

1. Insert the selected filter into the portafilter, aligning the filter dimple with the portafilter notch.



2. Turn the filter slightly left or right to lock it in place.



Removing the Filter

WARNING: Ensure the filter has cooled down before attempting to remove it from the portafilter.

To remove the filter for cleaning, turn the filter to the left or right to align the filter dimple to the portafilter notch and proceed to remove.

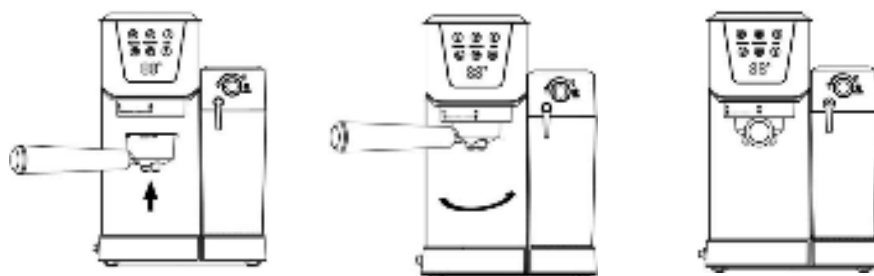
Adding Ground Coffee

1. Fill the filter with freshly ground, fine espresso coffee, leaving about 2mm of space from the rim (do not overfill).
2. Use the tamping side of the scoop to compact the coffee grounds evenly.
3. Wipe any excess coffee from the rim for a secure fit under the brew head.



Placing the Portafilter

1. Position the portafilter under the brew head.
2. Align the handle with the open lock icon on the unit, fitting it into the groove.
3. Slowly turn the handle to the right until it aligns with the closed lock icon on the unit.



Placing the Coffee Cup(s)

- For larger cups when brewing a cappuccino or latte, remove the drip grid on top of the drip tray to make space.
- When making a cappuccino or latte, adjust the frothing tube lever so the frothed milk dispensing tube is positioned over the cup in use.

Turning the Unit On

1. Ensure the unit is plugged into an appropriate electrical outlet.
2. Turn the unit on by pressing the 'I' side of the 'Power' switch. The control panel indicators will flash as the unit heats the water and milk (if applicable). Once the indicators turn solid, the unit is ready for use.

Note:

If the milk reservoir is not in the correct position, the 'Cappuccino' and 'Latte' buttons will not illuminate.

Preparing Espresso

- Press the 'Single Espresso' button once to brew a single shot. The 'Single Shot' indicator will turn on and start flashing, indicating the brewing process.
- Press the 'Double Espresso' button to brew a double shot or two single shots of espresso. The 'Double Shot' indicator will turn on and start flashing, indicating that a double shot is brewing.
- For both automatic espresso functions, the unit will begin brewing based on your selection. The unit will stop automatically when the brewing is complete, and the indicator will become solid, indicating the cycle is finished.

Note:

To brew a smaller amount than the preset serving, press the 'Function' button anytime during brewing to stop at the desired amount.

Preparing Cappuccino

- Before preparing your cappuccino, adjust the froth level to your preference using the 'Froth Control' knob. Turn it to the left for more foam (ideal for cappuccino) or to the right for less foam (ideal for latte). The foam level can also be adjusted during the brewing cycle.
- Press the 'Small Cappuccino' button once to brew a small cup. The 'Small Cup' indicator will turn on and start flashing, indicating the brewing process.
- Press the 'Large Cappuccino' button to brew a large cup. The large cup indicator will turn on and start flashing, indicating that a large cappuccino is brewing.
- The unit will automatically brew your cappuccino as selected. It will stop once brewing is complete, and the indicator will become solid, signalling the end of the cycle.

Preparing Latte

Before making a latte, adjust the froth level by turning the 'Froth Control' knob to the left for more foam or to the right for less foam (for a smoother latte texture).

- Press the 'Small Latte' button once to brew a small cup. The 'Small Cup' indicator will turn on and start flashing, signalling the brewing process.
- Press the 'Large Latte' button to brew a large cup. The 'Large Cup' indicator will turn on and start blinking, indicating that a large latte is brewing.
- The unit will automatically brew your latte according to your selection. It will stop once brewing is complete, and the indicator will become solid, indicating the cycle is finished.

After Preparing Milk-Based Beverages

Once you've finished making your milk-based beverage, you can either store the milk reservoir with its lid directly in the refrigerator for later use or discard any leftover milk.

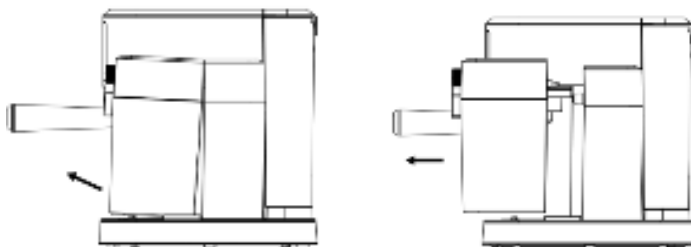
Cleaning & Care

WARNING: Never immerse the appliance's main body, power cord, or plug in water or any other liquid.

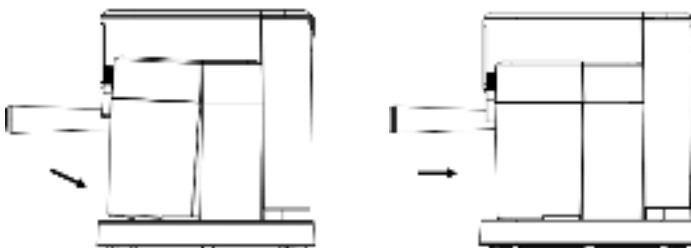
Cleaning the Milk Reservoir and Frothing Tube

While you can store the milk reservoir with leftover milk in the refrigerator, it's essential to clean the reservoir and frothing tube regularly to prevent clogging and residue buildup. Follow these steps:

1. Remove the milk reservoir by lifting and sliding it out.



2. Take off the lid and discard any leftover milk.
3. Fill the milk reservoir with purified water up to the 'MAX' fill line. Reattach it to the unit by lifting and sliding it in until it locks in place.



Note:

If the milk reservoir is not in the correct position, the 'Cappuccino' and 'Latte' buttons will not illuminate.

4. Place a large, empty cup under the froth dispensing tube.
5. Press the 'Large Cappuccino' or 'Large Latte' button. The unit will release hot water through the froth dispensing tube. Run this cycle until you see no more milk residue. Repeat if necessary.
6. Turn the 'Froth Control' knob to the 'Clean' position, then press the 'Large Cappuccino' or 'Large Latte' button. The unit will release hot steam through the froth dispensing tube. Repeat this cycle as needed.

Note:

Ensure that the purified water in the reservoir is filled to a level between the 'MIN' and 'MAX' marks.

7. Repeat steps 3-6 as needed.
8. Empty any remaining water in both the water and milk reservoirs. Wash the reservoirs thoroughly with warm, soapy water, rinse, and dry well. Avoid abrasive cleaners and scouring pads to prevent scratches.

Note:

The milk reservoir is dishwasher safe; however, the lid should not be placed in the dishwasher.

Cleaning the Brew Head, Portafilter, and Filters

Note:

Do not place the portafilter and filters in the dishwasher.

1. Turn the unit off by pressing the 'Power' switch to the 'O' position and unplug the power cord. Some metal parts may still be hot; allow them to cool before handling.
2. Remove the portafilter and discard any coffee grounds. Wash the portafilter and filter thoroughly with warm, soapy water. Rinse and dry well.
3. Wipe the lower part of the brew head with a damp cloth or paper towel to remove any remaining coffee grounds.
4. Insert the portafilter (without a filter) back into the brew head and lock it in place.
5. Place a large, empty cup under the portafilter.
6. Plug the power cord back into the outlet, turn on the unit, and press the 'Espresso' button. Let the unit run with water until it stops automatically.

Cleaning the Water Reservoir

1. Remove and empty the water reservoir by turning it upside down over a sink. It is recommended to empty the reservoir between uses.
2. Wash the water reservoir and its lid with warm, soapy water. Rinse and dry thoroughly.

Note:

Do not place the water reservoir or lid in the dishwasher.

Cleaning the Unit

- Wipe the exterior with a soft, damp cloth. Avoid using abrasive cleaners or scouring pads, as they may scratch the finish.
- Do not store the portafilter in the brew head, as this may damage the seal between the brew head and portafilter during brewing.

Descaling

- Mineral deposits can build up over time and affect appliance performance.
- Descale the unit when you notice increased brewing time or excessive steam, or when you see white deposits on the brew head.
- Frequency depends on water hardness. Refer to the table below for suggested descaling intervals:

Type of Water	Cleaning Frequency
Soft Water (Filtered)	Every 80-100 brew cycles
Hard Water (Tap)	Every 40-50 brew cycles

Descaling the Water Reservoir:

1. Fill the reservoir with fresh, undiluted white household vinegar.
2. Allow the vinegar to sit in the appliance overnight.
3. Empty the reservoir by turning it upside down over a sink.
4. Rinse thoroughly by filling halfway with tap water, then pouring it out. Repeat this rinse twice.

Descaling the Internal Parts:

1. Begin by descaling the water reservoir as outlined above.
2. Fill both the water and milk reservoirs with fresh, undiluted white vinegar.
3. Ensure the unit is turned off ('O' position) and unplugged.
4. Insert the portafilter (with an empty filter) and place a large empty cup on the drip tray.
5. Plug in the unit.
6. Place a large empty cup under the froth dispensing tube.
7. Turn on the unit. Once the control panel indicators are solid, press the 'Large Cappuccino' or 'Large Latte' button. The unit will release hot water through the froth dispensing tube and portafilter. Repeat this cleaning cycle as needed.
8. Turn the 'Froth Control' Knob to 'Clean' and press the 'Large Cappuccino' or 'Large Latte' button. The unit will release hot steam. Repeat as needed.
9. Repeat steps 2–8 as necessary.
10. Empty any remaining water from both reservoirs, then wash and rinse them thoroughly. Do not use abrasive cleaners or scouring pads.

Note:

Do not place the milk reservoir lid in the dishwasher. The milk reservoir is dishwasher safe.

Automatically Power-Off Function

If there is no user input for 25 minutes after pressing the 'Power' button, the unit will automatically power off.

Troubleshooting

Problem	Causes	Solutions
Coffee does not come out.	No water in the reservoir.	Add water.
	Coffee grind is too fine.	Grind medium ground coffee.
	Too much coffee in the filter.	Fill the filter with less coffee.
	The coffee machine was not turned on or plugged in.	Plug the coffee machine into an electrical outlet and turn it on.
	Coffee has been tamped/ compressed too much.	Refill filter basket with coffee and tamp gently.
Coffee leaks around the edge of the portafilter.	Portafilter not fully locked.	Rotate the portafilter holder to the full lock position.
	Coffee grounds around the filter basket rim.	Wipe the basket rim.
	Too much coffee in the filter.	Fill with less coffee.
Milk lacks foam or doesn't froth.	Low steam.	Ensure there is enough water in the water reservoir.
	Milk is not cold enough.	Chill the milk and frothing pitcher.
	Frothing tube is blocked.	Clean the milk reservoir and frothing tube.
Coffee flows too quickly.	Ground coffee is too coarse.	Use a finer grind.
	Not enough coffee in filter.	Fill the filter with more coffee.
Coffee is weak.	Single filter used for double shot.	Use the double filter.
	Ground coffee is too coarse.	Use a finer grind.

Note:

If you are unable to identify the cause of a problem, do not attempt to disassemble the appliance yourself. Contact help.kogan.com for support.

Notes

[illegible]

Need more information?

We hope that this user guide has given you the assistance needed for a simple set-up.

For the most up-to-date guide for your product, as well as any additional assistance you may require, head online to **help.Kogan.com**.

