



# 2026 SCOTT GAMBLER MANUAL

# CONTENT

THE GAMBLER SHOULD BE ADJUSTED EXACTLY TO THE RIDER FOR MAXIMUM SAFETY AND RIDEABILITY.

Please contact your authorized SCOTT dealer for advice to avoid technical problems or any harm.

GEOMETRY & TECHNICAL DATA	03
HEADSET ADJUSTMENT	05
DROPOUT ADJUSTMENT	06
BOTTOM BRACKET HEIGHT ADJUSTMENT	07
SETTING SAG	08
CABLE ROUTING	09
GENERAL SPARE PARTS	10
MANUFACTURE'S GUARANTEE	15

## LEGEND



TORQUE AMOUNT



TORX TOOL SIZE



HEX TOOL SIZE



GREASE REQUIRED



NO GREASE REQUIRED



CARBON GREASE



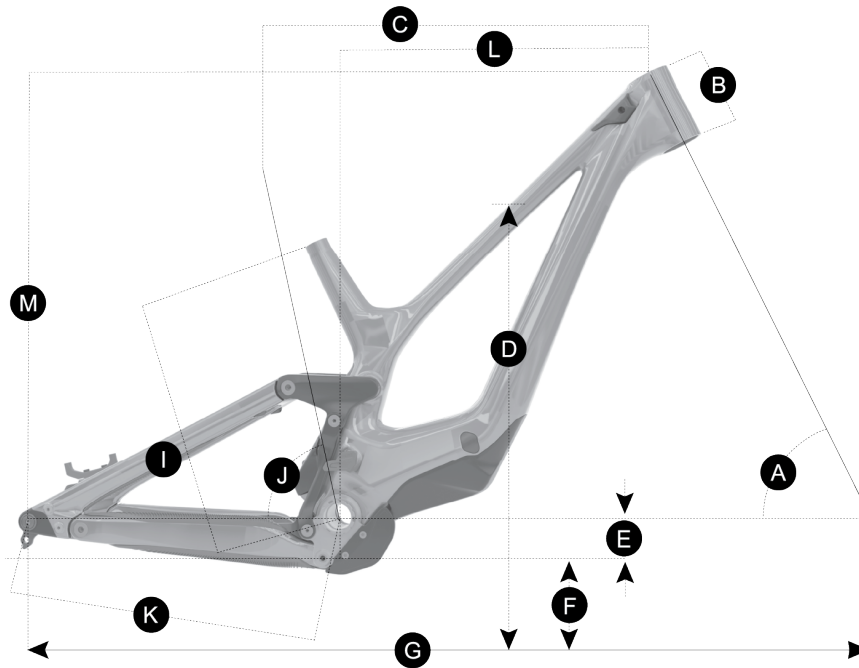
THREADLOC REQUIRED



BEARING FIT REQUIRED



# GEOMETRY & TECHNICAL DATA



2026 GAMBLER			MED High BB MX	MED Low BB MX	MED Low BB 29	LARGE High BB MX	LARGE Low BB MX	LARGE Low BB 29	XL High BB MX	XL Low BB MX	XL Low BB 29
A	Head tube angle	°	63.5	62.5	63.5	63.5	62.5	63.5	63.5	62.5	63.5
B	Head tube length	mm	110	110	110	110	110	110	110	110	110
C	Top tube horizontal	mm	602	602	602	628	628	628	653	653	653
D	Standover height	mm	684	684	684	684	684	684	684	684	684
E	BB offset	mm	+2	-14	-14	+2	-14	-14	+2	-14	-14
F	BB height	mm	361	345	361	361	345	361	361	345	361
G	Wheelbase	mm	1260/1275	1263/1278	1278	1285/1300	1288/1303	1303	1310/1325	1313/1328	1328
I	BB center to TST	mm	405	405	405	405	405	405	405	405	405
J	Seat angle	°	67.2	67.2	67.2	67.2	67.2	67.2	67.2	67.2	67.2
K	Chainstay	mm	445/460	449/464	464	445/460	449/464	464	445/460	449/464	464
L	Reach	mm	439/ 445/ 451	427/ 433/ 439	439/ 445/ 451	464/ 470/ 476	452/ 458/ 464	464/ 470/ 476	489/ 495/ 501	477/ 483/ 489	489/ 495/ 501
M	Stack	mm	639	648	639	639	648	639	639	648	639
	Fork Rake	mm	52	52	52	52	52	52	52	52	52
	Trail	mm	129	129	129	129	129	129	129	129	129

# GAMBLER

## GEOMETRY & TECHNICAL DATA CONT.

SEATPOST	mm	31.6
SEATPOST CLAMP	mm	34.9
MAX SEATPOST INSERTION	mm	165 for all sizes
TRAVEL	mm	200 F / 210 R
SHOCK LENGTH	mm	250
SHOCK STROKE	mm	75
SHOCK HARDWARE/FRAME	mm	Front: M8 x 80   Rear: M8 x 20
HEADSET	mm	ZS56/28.6-ZS56/30 (adj.cup 0mm/+6mm/-6mm)
REAR AXLE	mm	190 x 12 (pitch 1.0)
REAR HUB	mm	157 x 12
BB HOUSING	mm	PF MTB 107
MAX CHAIN RING	Tooth	36
MAX/MIN REAR ROTOR	mm	200 Direct / 203 + Shimano Adapt.
MAX TYRE WIDTH	in	2.6
CHAIN LINE	mm	58.5

### BEARINGS:

LOWER LINK /CHAINSTAY	2 x 61802 2RS
LINKAGE/SEATTUBE	2 x 61802 2RS
LINKAGE/SEATSTAY	2 x 61802 2RS
SEATSTAY/CHAINSTAY	2 x 61802 2RS
MAIN BB BEARING	2 x 61810 2RS
TIE LINKS TOP & BOTTOM	4 x 3900V 2RS
SHOCK MOUNT	2 x 61800 2RS

# GAMBLER

## HEADSET ADJUSTMENT

### Headset Cups



Long Setting +6mm

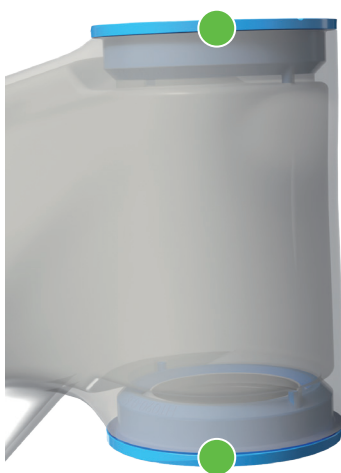
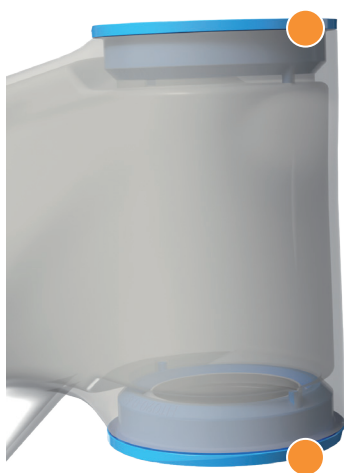


Neutral Setting 0mm



Short Setting -6mm

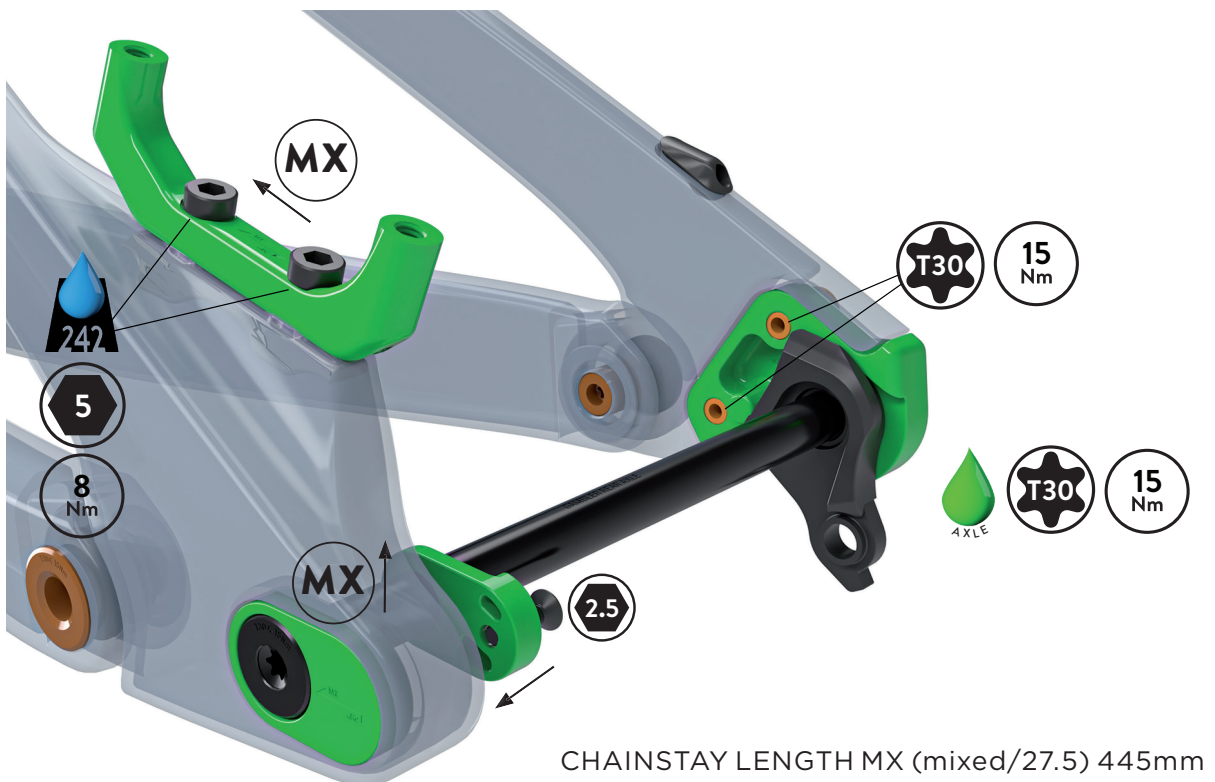
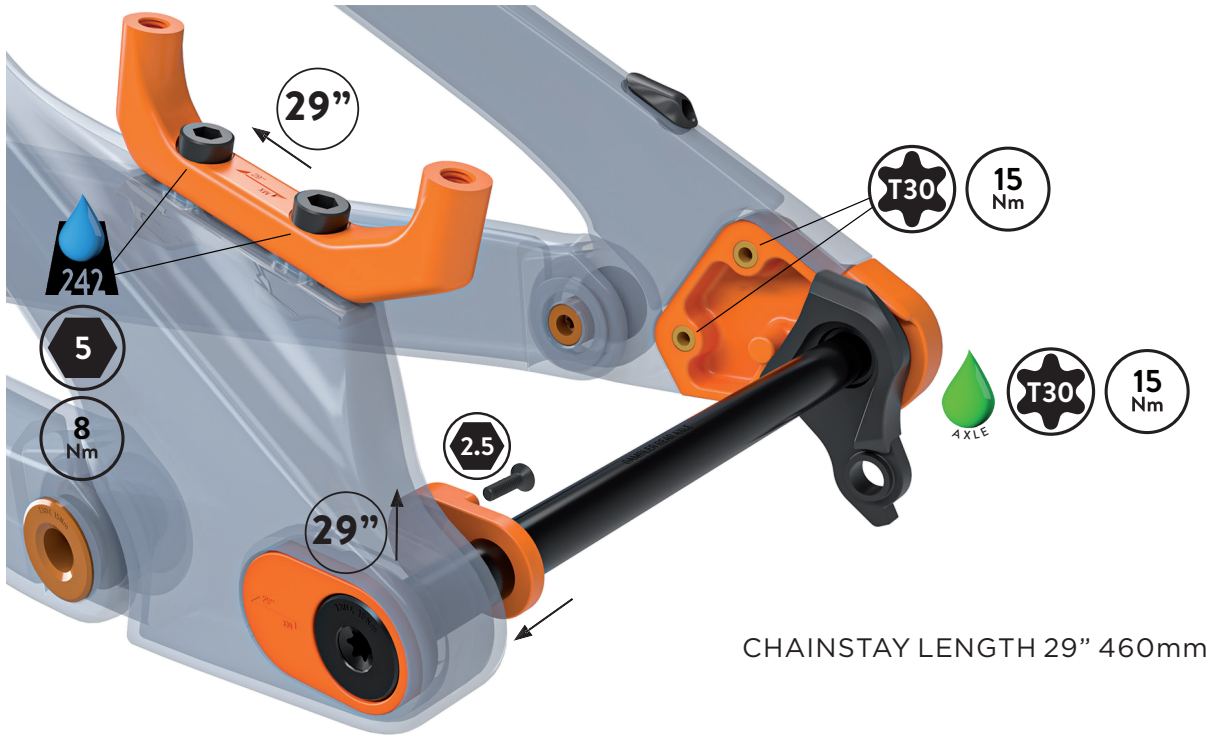
### MATCH HEADSET CUPS TOP AND BOTTOM !



# GAMBLER

## DROPOUT ADJUSTMENT

To adjust the chainstay length you will need to change the right dropout.  
And adjust the left dropout and rear brake mount. **PART NUMBER: 424382**

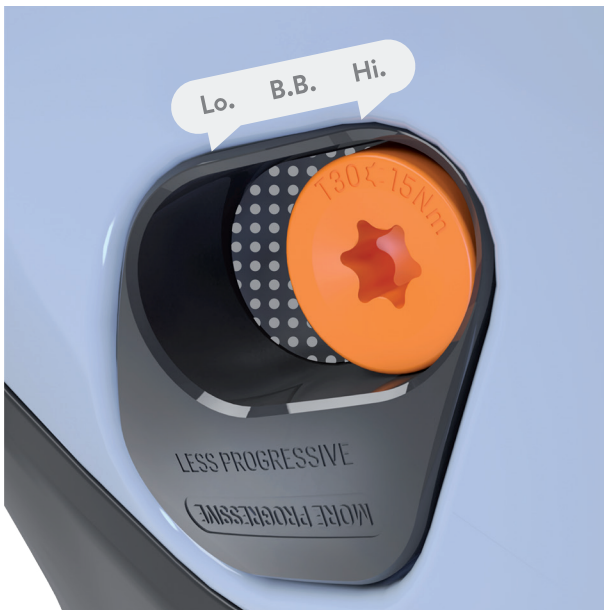


# GAMBLER

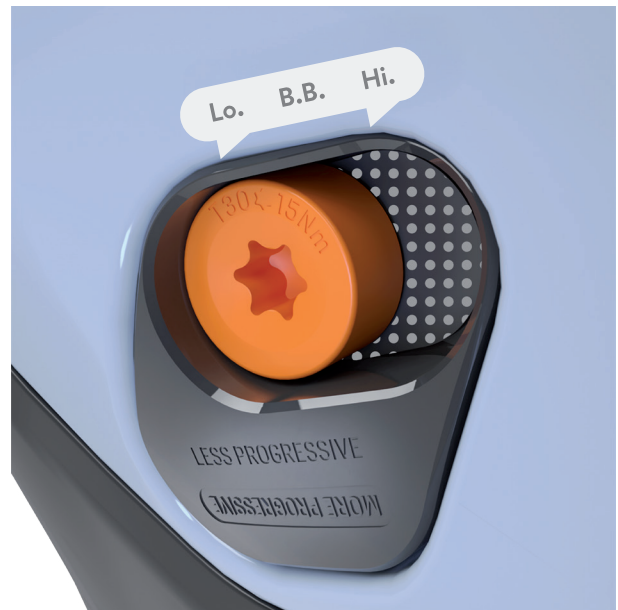
## BOTTOM BRACKET HEIGHT ADJUSTMENT

Raise or lower the BB height from High to Low in either the Less Progressive or More Progressive setting.

Changes the progressivity of the rear shock from 25% to 30%.



High BB / Less Progressive



Low BB / Less Progressive



High BB / More Progressive



Low BB / More Progressive



# GAMBLER

## SETTING SAG



Gently sit on the bike, allow the sag meter to move. Once completed dismount the bike gently and check the value.

If the sag value is not to your liking within the sag range indicated (optimum 25%-35%), access the shock by removing the shock cover and adjusting the pressure.



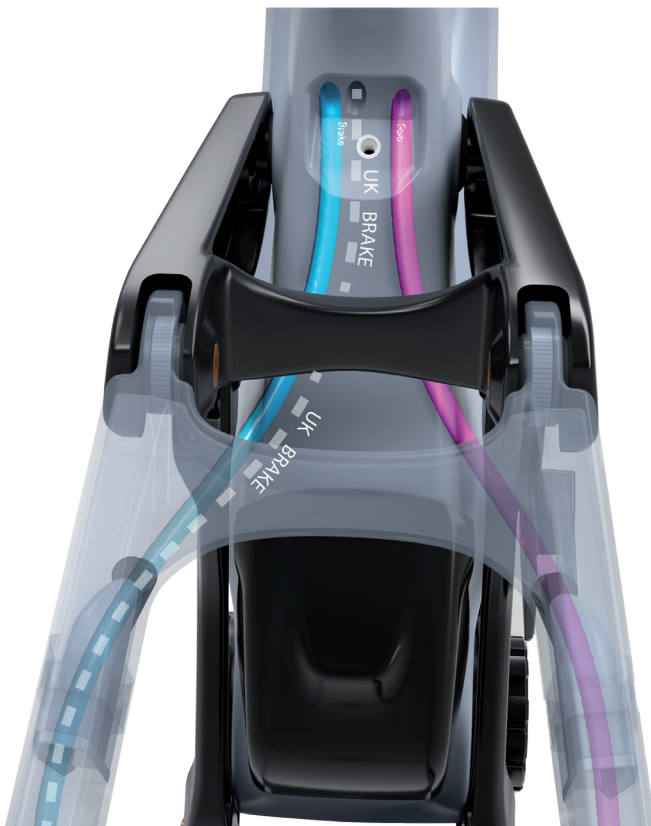


# GAMBLER

## CABLE ROUTING



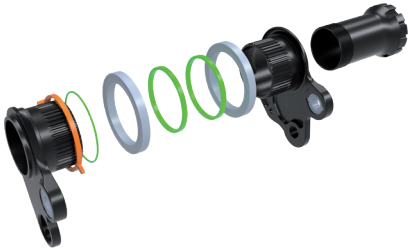
For left hand rear braking (UK) use the cable guide routing on the drive side of the headtube (indicated by the dashed lines).



GEAR CABLE (PINK)  
BRAKE CABLE (BLUE)

# GAMBLER

## GENERAL SPARE PARTS



424380 SCO LINK LOWER OUTER GAMBLER 26  
(no bearings)

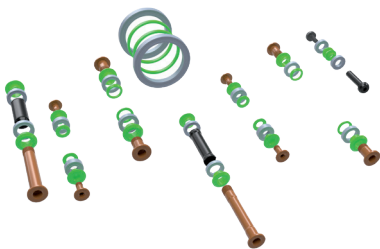


424386 SCO LINK LOWER INNER GAMBLER 26



425854 SCO LINK OUT GAMBLER 10 26

425853 SCO LINK OUT GAMBLER RC 26



424384 SCO SWINGARM REP KIT GAMBLER 26



424374 SCO LINK TIE GAMBLER 26

# GAMBLER

## GENERAL SPARE PARTS



423997 SCO BASH GUARD GAMBLER 26



297136 SCO BOTTLE CAGE INSERTS SCALE HMX-SL 23



422742 SCO SHOCK DT COVER GAMBLER 26  
(no multi tool)



424376 SCO SAG INDICATOR GAMBLER 26

# GAMBLER

## GENERAL SPARE PARTS



424383 SCO BRAKE MOUNT FLIP GAMBLER 26



424382 SCO AXLE MOUNT KIT GAMBLER 26



286000 SCO DROPOUT SRAM UDH 21



424389 SCO SHOCK MOUNT BOLT KIT GAMBLER 26



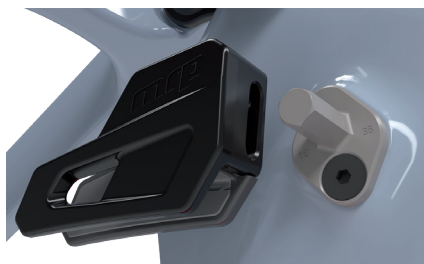


# GAMBLER

## GENERAL SPARE PARTS



424381 SCO AXLE REAR 157X12 GAMBLER 26



424377 SCO CHAINGUIDE GAMBLER 26



422741 SCO FORK BUMPERS GAMBLER 26  
(protection not prevention)



422739 SCO CS/SS PROTECTOR GAMBLER 26

# GAMBLER

## GENERAL SPARE PARTS



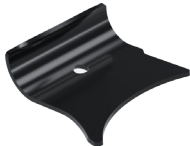
424375 SCO CABLEGUIDE SET GAMBLER 26



422743 SCO M/P COVER GAMBLER 26



422740 SCO CHAINSTAY FENDER GAMBLER 26



424542 SCO LOWER CHAINSTAY PROTECTOR GAMBLER 26



423490 SYN HEADSET CUPS ZS56 REACH ADJUST 5MM

423418 SYN HEADSET ZS56/28.6 - ZS56/30

# MANUFACTURER'S GUARANTEE,

When purchasing a new SCOTT bicycle from an authorized SCOTT dealer, SCOTT grants a manufacturer's guarantee subject to the following provisions.

## CONDITIONS

The manufacturer's guarantee is only granted to the first-time buyer of a SCOTT bicycle who has purchased it from an authorized SCOTT dealer. The manufacturer's guarantee only applies if the bicycle is registered to the first buyer at [www.scott-sports.com](http://www.scott-sports.com) within one year of purchase.

## DURATION

The manufacturer's guarantee is granted from the date of purchase for a period of five years on bicycle frames and rear ends. The guarantee period is reduced to three years, if the SCOTT bicycle is not serviced at least once a year by an authorized SCOTT dealer. Maintenance services must be carried out in accordance with the maintenance instructions in the SCOTT manual and must be confirmed there by the stamp and signature of the authorized SCOTT dealer.

For frames and rear ends of Category 5 bicycle models and for rigid forks manufactured by SCOTT, the duration of the manufacturer's guarantee is limited to two years.

If a defect on the SCOTT bicycle is remedied within the scope of a manufacturer's guarantee or a warranty claim, the duration of the manufacturer's guarantee is not extended. The manufacturer's guarantee ends, when the first-time buyer transfers ownership of the SCOTT bicycle to a third person.

## ASSERTION

The manufacturer's guarantee is provided by SCOTT Sports SA, Route du Crochet 11, 1762 Givisiez, Switzerland. The buyer must inspect the SCOTT bicycle immediately after purchase and notify his authorized SCOTT dealer at once in writing of any obvious defects. Hidden defects must be reported immediately after their discovery. In the event of a guarantee claim, the SCOTT bicycle must be handed over to an authorized SCOTT dealer. The latter will contact SCOTT to remedy the defect. The assertion of a guarantee claim always requires the presentation of the original proof of purchase as well as the proof of maintenance service in the SCOTT manual.

Performance of SCOTT in the event of a guarantee claim

In the event of a guarantee claim, SCOTT will, at its own discretion, repair the defect or replace the defective product with a product of similar quality, whereby colour and model deviations are possible. If a repair or replacement is not possible, a purchase price refund will be made taking into account previous use. SCOTT is entitled to commission third parties to remedy the defect.

## LIMITATIONS

The manufacturer's guarantee applies exclusively to frames, swingarms and rigid forks of SCOTT bicycles. Bicycle components are excluded from this manufacturer's guarantee.

The manufacturer's guarantee does not apply to normal wear and tear, damage caused by accidents or other excessive force on the SCOTT bicycle, corrosion, improper maintenance, incorrect assembly and assembly of unsuitable components or accessories as well as cosmetic defects, for example in the varnish.

The manufacturer's guarantee does not apply to SCOTT bicycles that have been used in a rental shop.

## MISCELLANEOUS

These manufacturer's guarantee provisions apply to all SCOTT bicycles as of model year 2023. Statutory warranty rights of the buyer and guarantees of component manufacturers (Shimano, SRAM etc.) remain unaffected by this manufacturer's guarantee. The place of jurisdiction for all disputes in connection with this manufacturer's guarantee is Freiburg, Switzerland. This manufacturer's guarantee is subject to Swiss law to the exclusion of all legislation that refers to foreign law.

BIKE WARRANTY PERIODS					
	Year 1	Year 2	Year 3	Year 4	Year 5
SCOTT Bikes					
Category 5 Bikes					
Regular Warranty Period					
Option for prolongation according to maintenance intervals shown in manual attached to bikes					



All rights reserved  
© 2026 SCOTT Sports SA

Distribution:  
SSG (Europe) Distribution Center SA  
P.E.D. Zone C1  
Rue du Kiell 60  
6790 Aubange  
Belgium

SCOTT Sports SA  
Route du Crochet 11  
1762 Givisiez  
Switzerland

[www.scott-sports.com](http://www.scott-sports.com)|contact  
[www.scott-sports.com](http://www.scott-sports.com)

