

53861-001
Rev 01

Kwikset

English

HALOSELECT™

WI-FI AND MATTER ENABLED SMART LOCK



Installation and Reference Guide

Welcome to the Kwikset family!

This guide will get you up and running with your new Halo Select.

If you have any issues, please visit our support center: kwikset.com/support or call us at 1-800-327-5625.

Getting started

For an interactive version of this installation guide, please download the Kwikset app:



kwikset.com/app

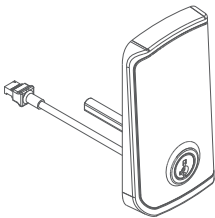




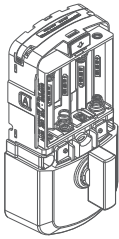
Table of contents

Parts in the box	4
Required tools	5
Installation	7
Download the app	17
Reference guide	19

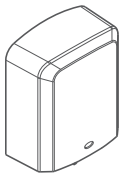
Parts in the box



Exterior assembly



Interior assembly



Interior cover

Box 1

A line drawing of a latch mechanism.

Latch

A line drawing of four AA batteries.

Batteries

03809

A line drawing of four screws, two of which are longer than the other two.

Box 2

A line drawing of a small rectangular door sensor magnet.

Door sensor magnet

A line drawing of a strike plate with four screws.

Strike

46780

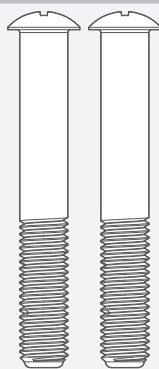
A line drawing of four screws, two of which are longer than the other two.

Box **3**

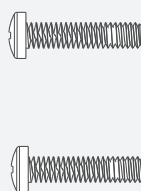


Mounting
plate

64844



52502



Keys

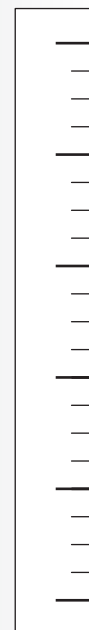


SmartKey™
tool

Required tools



Phillips head
screwdriver



Ruler

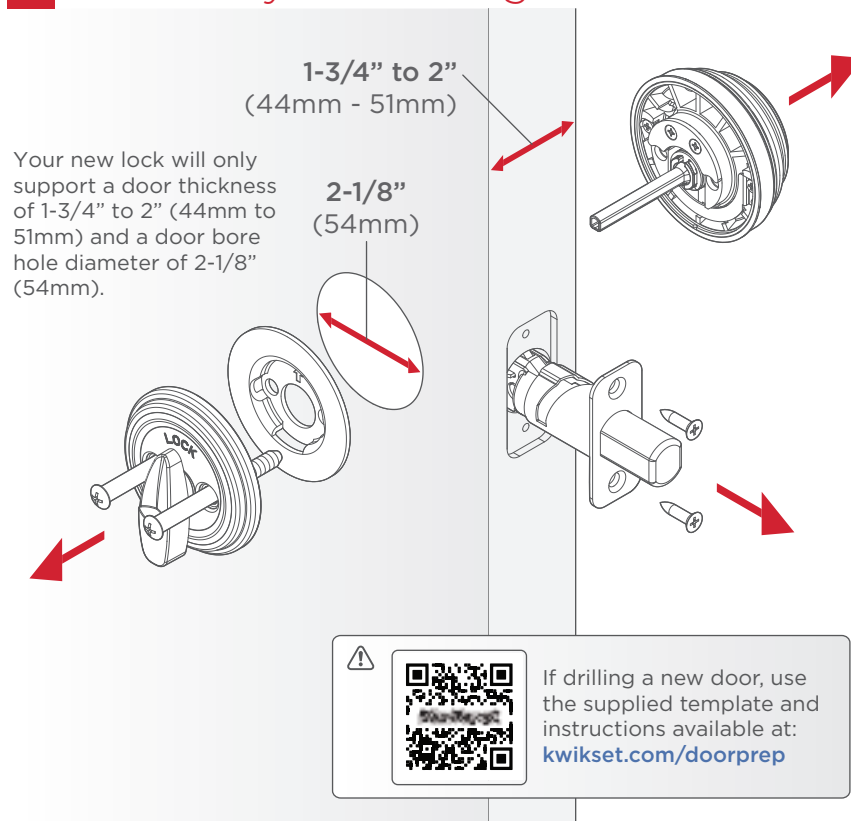
 No electric drills

Installation

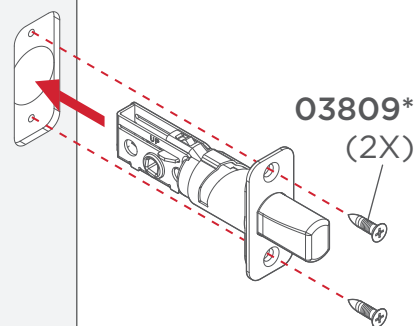
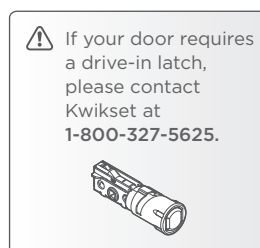
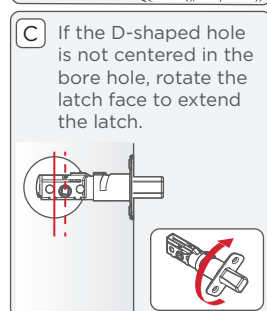
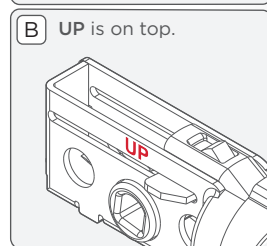
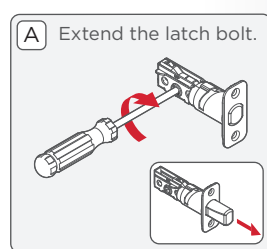
! Measure door thickness



! Remove your existing deadbolt



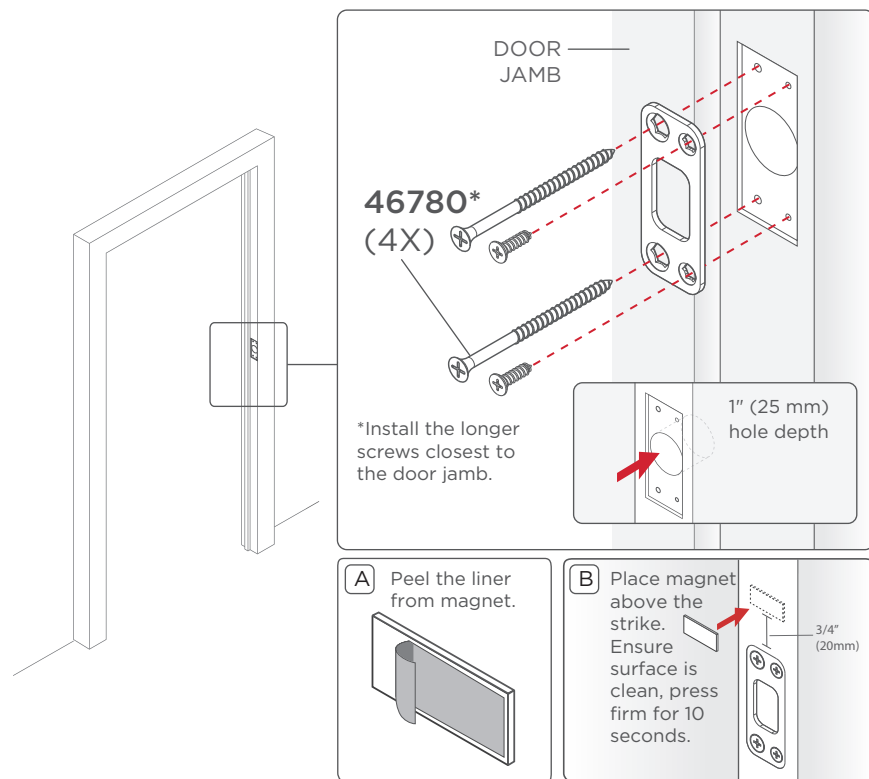
1 Install the latch



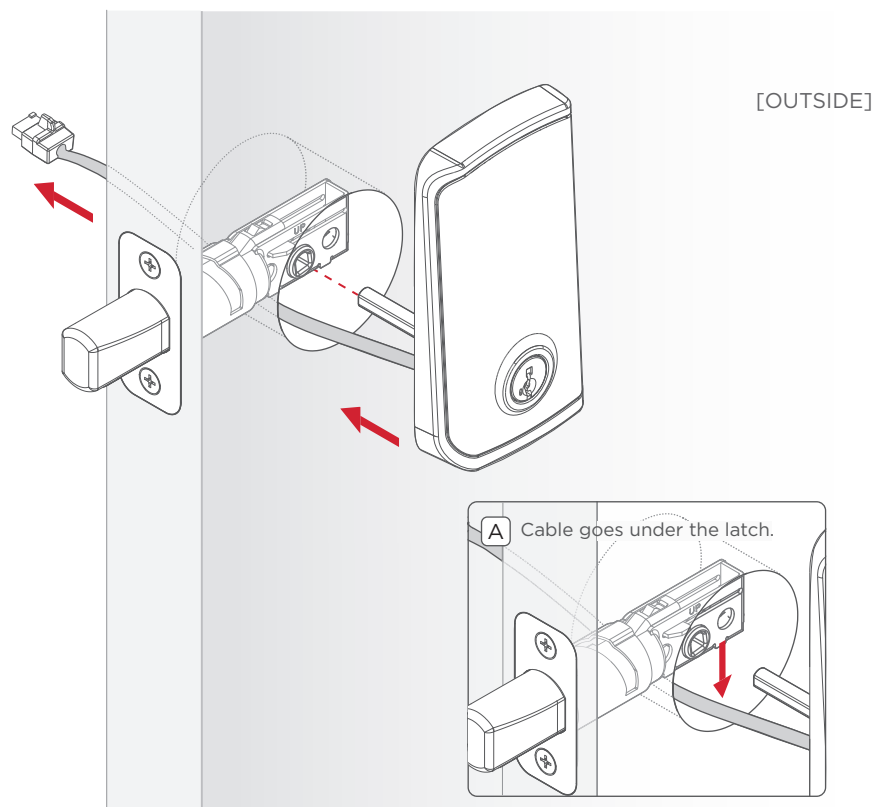
[OUTSIDE]

*Use the longer screws if the holes are worn out.
You will have two extra screws.

2 Install the strike and sensor magnet



3 Install the exterior assembly



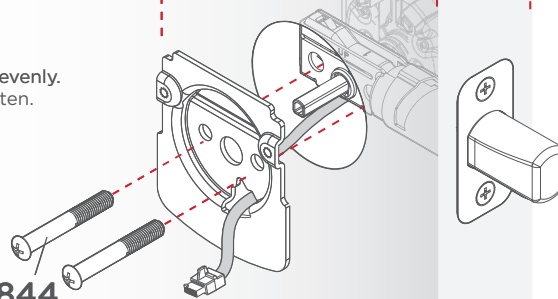
[INSIDE]

Tighten the screws evenly.
DO NOT over-tighten.

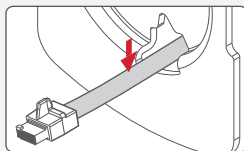


64844
(2X)

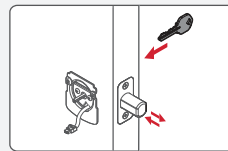
Keep parallel to
the door edge



- B** Route the cable through the bottom hole of the mounting plate.

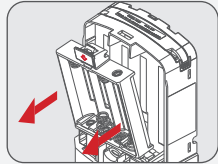


- C** Insert the key and test the latch. If the latch does not extend or retract smoothly, adjust the screws.



4 Install the interior assembly

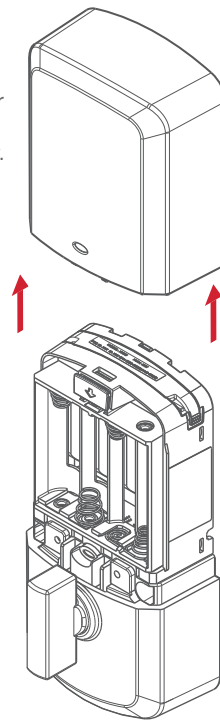
⚠ Make sure to remove the battery pack before installing interior assembly. Press down on tab to release the battery pack, and pull out.



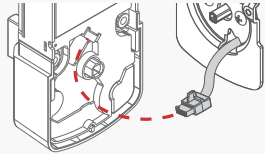
A If the turnpiece is not pointing up, rotate the turnpiece until it's in a vertical position.



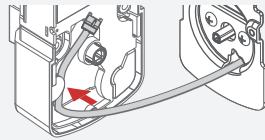
Remove the interior cover from the interior assembly.



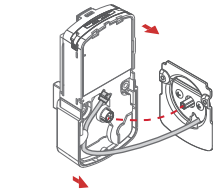
- B** Connect the cable.
Ensure a tight cable
connection.



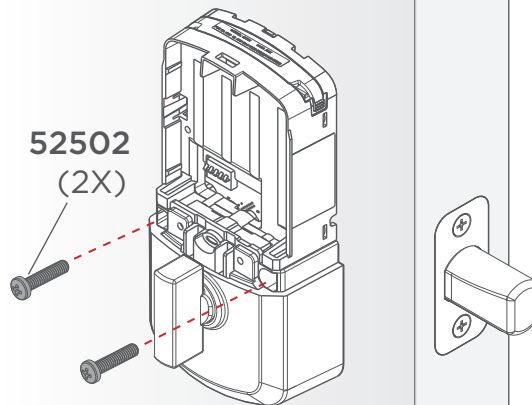
- C** Lay cable flat inside the
bottom of the interior
housing.



- D** Ensure the spindle
fully engages with the
turnpiece shaft.

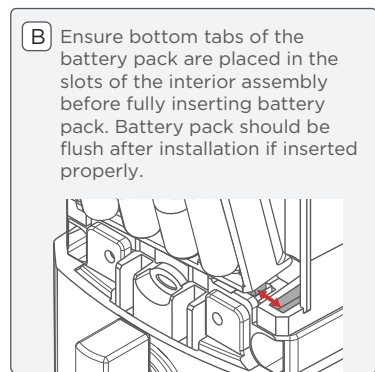
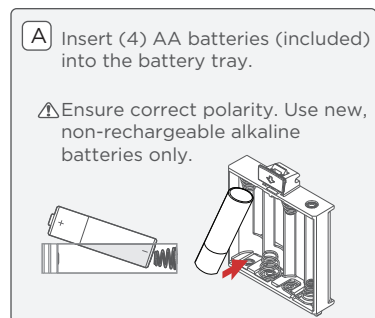


Secure the interior
assembly onto the
mounting plate.

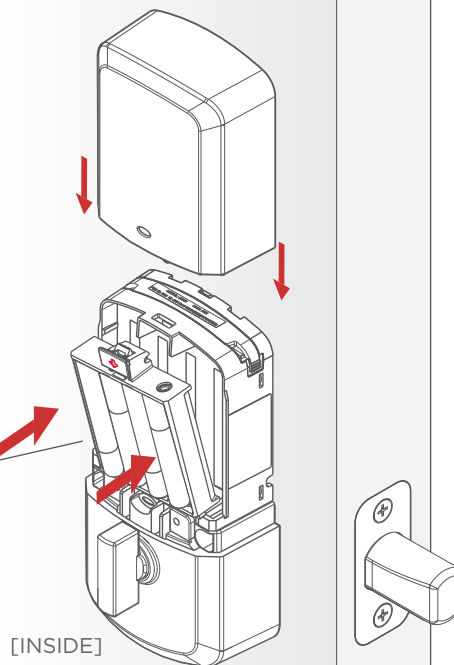


[INSIDE]

5 Install batteries and battery pack



With the door open, install the battery pack. **NOTE: Lock must be installed on the door before inserting the batteries.**



Download the Kwikset
app & create an account
to complete set up

Complete your lock set up

Follow the set up instructions in the Kwikset app to complete your lock set up.



kwikset.com/app

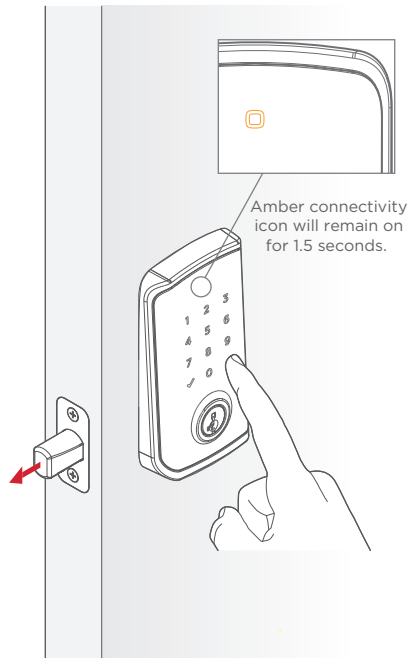


The Kwikset app is needed to use this lock. If this lock was professionally installed (or installed by someone other than the homeowner), make sure this step is performed by the homeowner.

Reference Guide

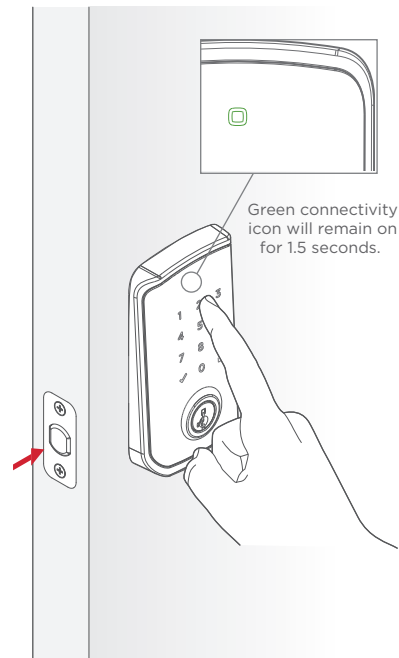
Locked

To lock your door, press the lock icon. The bolt will extend, then the screen will display the Locked LED Indicator and play the locked tone.



Unlocked

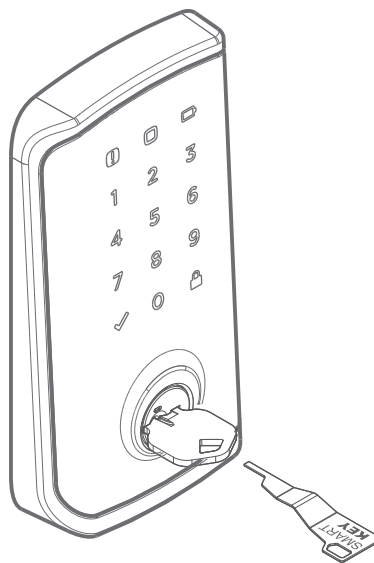
To unlock your door, enter your access code. The bolt will retract, then the screen will display the Unlocked LED Indicator and play the unlocked tone.








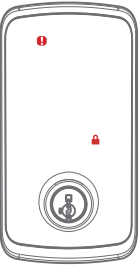
SmartKey® Re-key

Re-key the lock to work with your existing key by following the [SmartKey® Re-key instructions](#).

NOTE: If Auto-Lock is enabled, remove the battery pack before re-keying your lock.



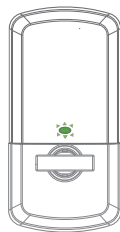
Exterior LED Indicators

<p>Amber: Locked</p> 	<p>Green: Unlocked</p> 	<p>Alternating Red flashing: Lock Jammed</p> 
<p>Red: Low Battery</p> 	<p>Red: Invalid Credentials</p> 	<p>Red: Lockout</p> 

Interior Status LED Indicators

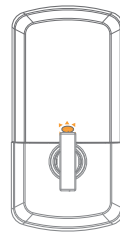
Green

Slow Blinking:
Unlocked



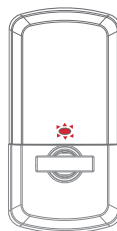
Amber

Blinking:
Locked



Red

Blinking:
Low Battery



Factory Reset

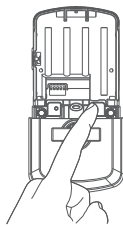
Factory Reset will:

- delete all access codes and associated schedule
- reset lock settings to default
- lock will show as offline in the Kwikset App
- lock will be deactivated and will need to be set up as new

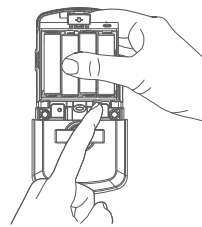
Factory Reset should be used when:

- you want to change the lock owner
- you have lost your phone
- you are troubleshooting the lock

1. Remove the battery pack, then press and hold the Programming Button.

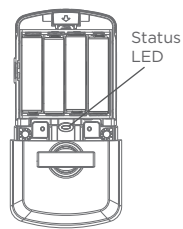


2. While still holding the Programming Button, insert the battery pack. Continue holding the Programming Button for 30 seconds.

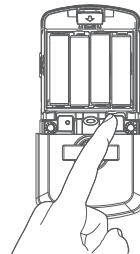


Continue to the next page for additional steps.

3. After 30 seconds, the Status LED light will flash RED and lock will beep. Release the Programming Button.



4. Press the Programming Button once within 5 seconds of the Status LED light displaying RED to confirm factory reset.



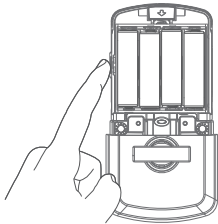
5. SUCCESS: Lock will play a two-tone sound, Status LED light will flash PURPLE then GREEN.

UNSUCCESSFUL: Lock will play a single-tone sound, Status LED light will flash RED.

Network Reset

Resets all Bluetooth, Wi-Fi, and Matter connections. Access codes and lock settings will remain.

1. Press Button A for 3 seconds until the Status LED light shows solid AMBER. Release Button A.



2. Press the Programming Button once while the Status LED light is solid AMBER.

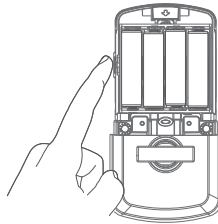
SUCCESS:
Lock will play a two-tone sound, Status LED light will flash GREEN, then PURPLE, then GREEN again.

UNSUCCESSFUL:
Lock will play a single-tone sound, Status LED light will flash RED.

System Reset

Removes all access codes and associated schedules. Resets lock settings to default. Bluetooth, Wi-Fi, and Matter connections will remain.

1. Press Button A 10 times at 1-second intervals until the Status LED light shows solid AMBER.

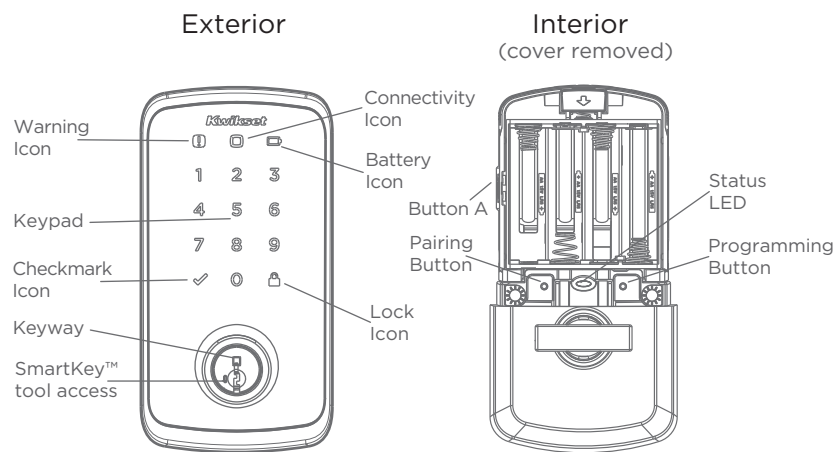


2. Press the Programming Button once while the Status LED light is solid AMBER.

SUCCESS:
Status LED light will flash PURPLE, then GREEN, then lock will beep.

UNSUCCESSFUL:
Lock will play a single-tone sound, Status LED light will flash RED.

Halo Select at a Glance



Troubleshooting

If you have any issues, please visit our support center: kwikset.com/support or call us at **800-327-5625**



Important Safeguards

1. Read all instructions in their entirety.
2. Familiarize yourself with all warning and caution statements.
3. Remind all family members of safety precautions.
4. Always have access to your lock's standard key.
5. If using the Auto-Lock features, make sure you have your smartphone or standard key with you to prevent locking yourself out.
6. Familiarize yourself with all light bar error notifications.
7. Replace low batteries immediately.
8. Dispose of used batteries according to local laws and regulations.

⚠ WARNING: This Manufacturer advises that no lock can provide complete security by itself. This lock may be defeated by forcible or technical means, or evaded by entry elsewhere on the property. No lock can substitute for caution, awareness of your environment, and common sense. Builder's hardware is available in multiple performance grades to suit the application. In order to enhance security and reduce risk, you should consult a qualified locksmith or other security professional.

Regulatory Compliance

FCC ID: NUL-HAL3S
IC: 3022A-HAL3S

This product complies with standards established by the following regulatory bodies:

- Federal Communications Commission (FCC)
- Industry Canada

FCC

This device complies with Part 15 of the FCC Rules. Operation is subject to the following two conditions: (1) this device may not cause harmful interference, and (2) this device must accept any interference received, including interference that may cause undesired operation. This equipment has been tested and found to comply with the limits for a Class B digital device, pursuant to Part 15 of the FCC Rules. These limits are designed to provide reasonable protection against harmful interference in a

residential installation. This equipment generates, uses, and can radiate radio frequency energy and, if not installed and used in accordance with the instructions, may cause harmful interference to radio communications. However, there is no guarantee that interference will not occur in a particular installation. If this equipment does cause harmful interference to radio or television reception, which can be determined by turning the equipment off and on, the user is encouraged to try to correct the interference by one or more of the following measures:

- Reorient or relocate the receiving antenna.
- Increase the separation between the equipment and receiver.

- Connect the equipment into an outlet on a circuit different from that to which the receiver is connected.
- Consult the dealer or an experienced radio/TV technician for help.

IMPORTANT! Changes or modifications not expressly approved by the manufacturer could void the user's authority to operate the equipment.

Industry Canada

This device contains licence-exempt transmitter(s)/receiver(s) that comply with Innovation, Science and Economic Development Canada's licence-exempt RSS(s). Operation is subject to the following two conditions: (1) This device may not cause interference. (2) This device must accept any interference, including interference that may cause undesired operation of the device.