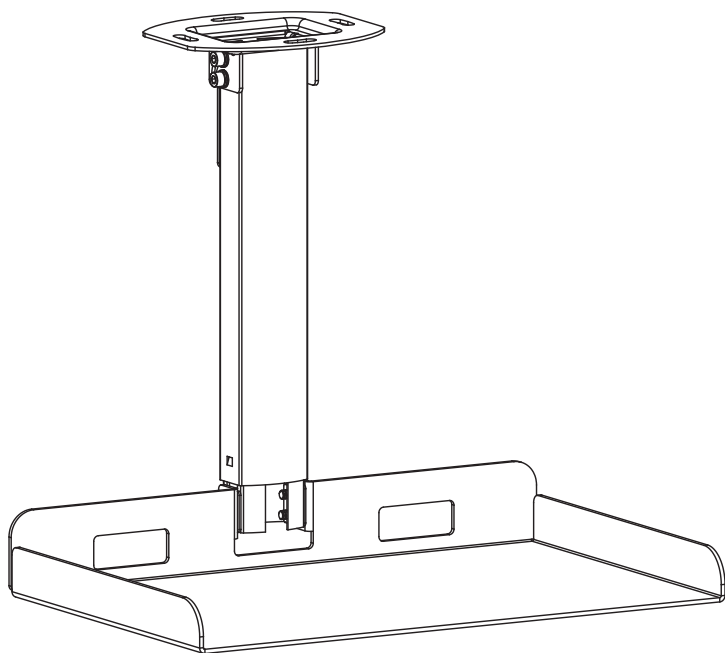




## User Manual



# Extending Ceiling Projector Tray Mount

MOUNT-VP08B

---

Individual Product SKUs

MOUNT-VP08B

MOUNT-VP08W



## WARNING



If you do not understand these directions, or if you have any doubts about the safety of the installation, please contact our product support team at 309-278-5303 or [help@vivo-us.com](mailto:help@vivo-us.com) for further assistance. Check carefully to make sure there are no missing or defective parts. Failure to report missing parts within 30 days may result in denial of free replacement. Improper installation may cause damage or serious injury. Do not use this product for any purpose that is not explicitly specified in this manual. Do not exceed weight capacity. We cannot be liable for damage or injury caused by improper mounting, incorrect assembly or inappropriate use.



### WARNING: CHOKING HAZARD

SMALL PARTS - NOT FOR CHILDREN UNDER 3 YEARS. ADULT SUPERVISION IS REQUIRED.



### WEIGHT LIMIT: 11lbs(5kg)

DO NOT EXCEED WEIGHT LIMIT. FAILURE TO DO SO MAY RESULT IN SERIOUS INJURY AND DAMAGE TO PROPERTY.



### DO NOT INSTALL INTO DRYWALL ALONE

DRYWALL ALONE CANNOT SUPPORT WEIGHT OF PRODUCT AND ACCESSORIES. Mount must be installed into wood stud or concrete/brick walls ONLY. Failure to follow instructions may result in damage to property and/or serious personal injury. Please verify intended mounting location before proceeding. If unsure, please contact us at 309-278-5353 or [help@vivo-us.com](mailto:help@vivo-us.com).

## Need Help? We're Here For You

*US-Based Customer Support from Trained Professionals*

**Monday-Friday from 7am-7pm CST**

**Saturday 8am-4pm CST**



**Email Us**

[help@vivo-us.com](mailto:help@vivo-us.com)



**Chat with Live Agent**

[www.vivo-us.com](http://www.vivo-us.com)



**Give Us a Call**

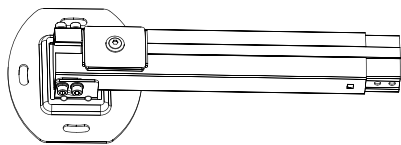
309-278-5303 ext. 1



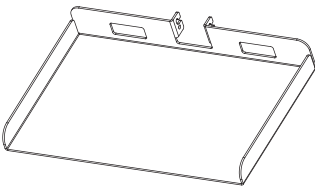
**Assembly Video & Product Info**

[www.vivo-us.com/products/mount-vp08b](http://www.vivo-us.com/products/mount-vp08b)

# Package Contents



**A (x1)**  
Mount

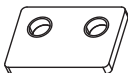


**B (x1)**  
Tray

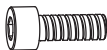
## Included Hardware & Tools



**S-A (x2)**  
Plastic Spacer



**S-B (x2)**  
Threaded Plate



**S-C (x4)**  
M5x12mm  
Screw



**W-A (x4)**  
ST6.3X55mm  
Screw



**W-B (x4)**  
Concrete  
Anchor



**M-C (x4)**  
M6 Washer



**T-A (x1)**  
4mm Allen  
Wrench

## Tools Needed



**Drill**



**Phillips  
Screwdriver**

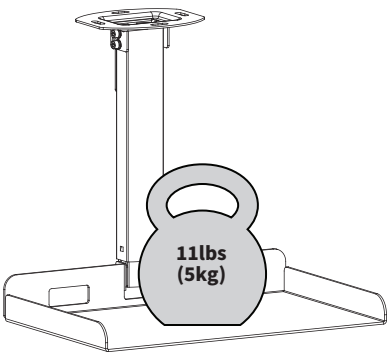


**Stud  
Finder**



**Pencil**

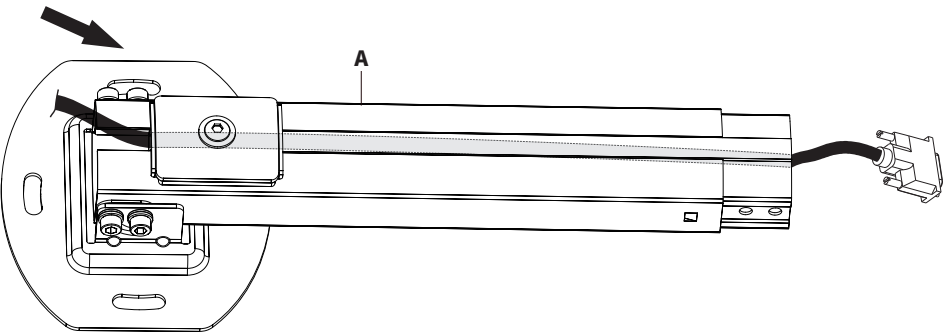
## Weight Limit



# Assembly Steps

## STEP 1

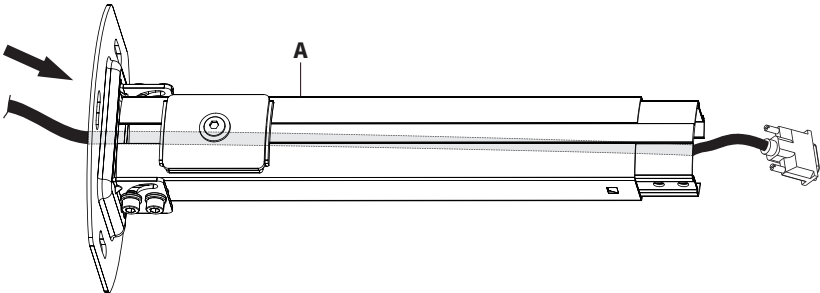
Run cables through Mount (A), as shown.



- Alternative Assembly -

### Cables Routed Through Ceiling

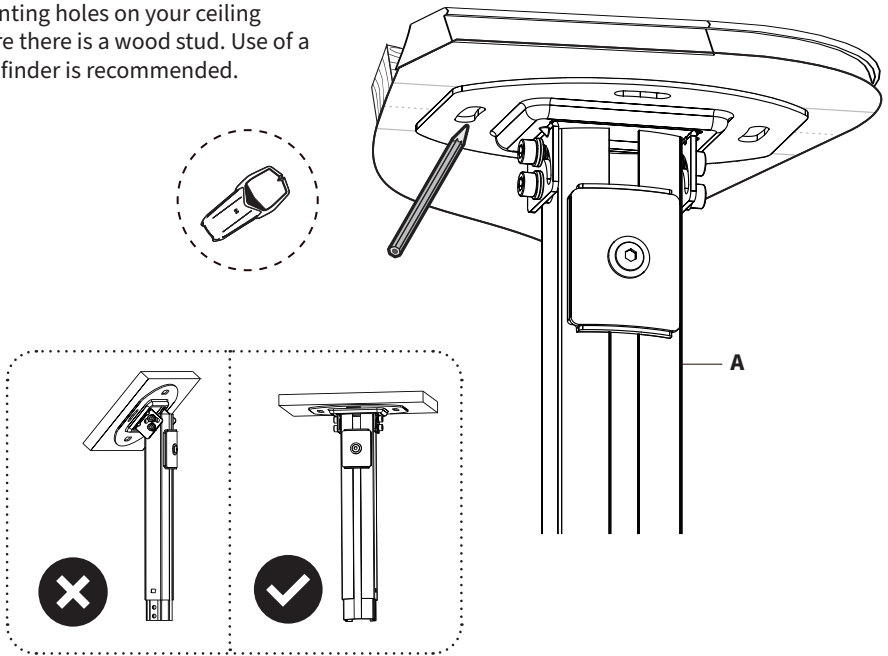
If your cables are routed through the ceiling, guide them through the *top plate* of Mount (A), as shown.



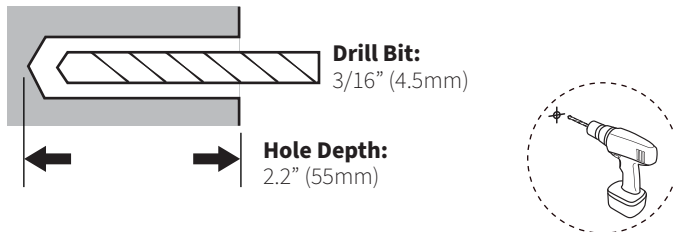
- Mounting Option 1 -

**Wood Stud Mounting***For Concrete/Brick Mounting, go to **page 7***

Use top plate of Mount **(A)** to mark mounting holes on your ceiling where there is a wood stud. Use of a stud finder is recommended.

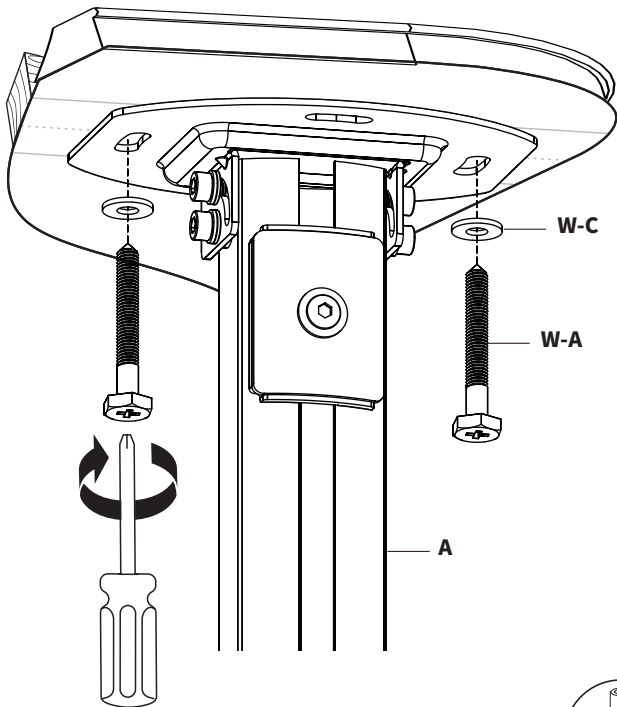


Drill mounting holes at marked locations using the infographic below.



**Wood Stud Mounting - Cont'd**

Attach Mount (A) to ceiling using ST6.3x55mm Screws (W-A), M6 Washers (W-C), and a Phillips screwdriver.



**Anchors NOT Intended  
For Drywall Use**

Anchors (W-B) are included for  
concrete/brick installations ONLY.



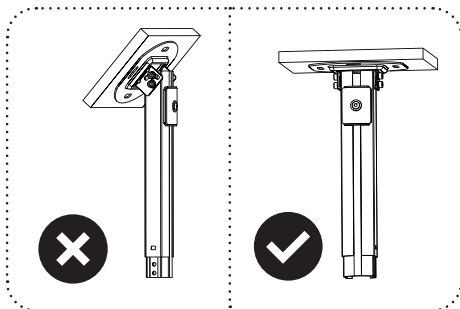
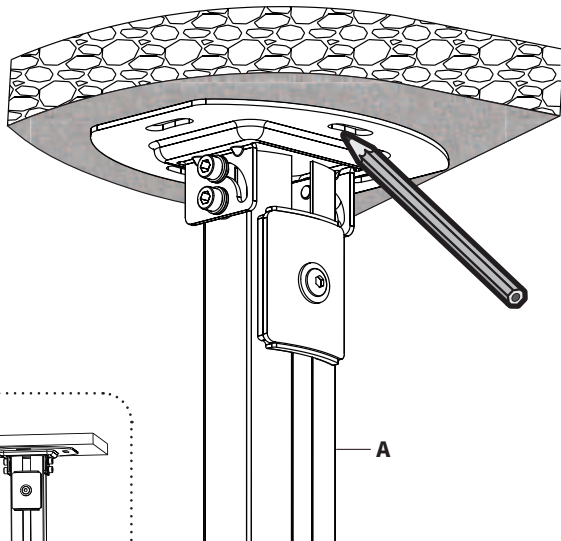
Proceed to STEP 3 on **Page 9**



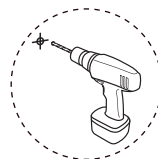
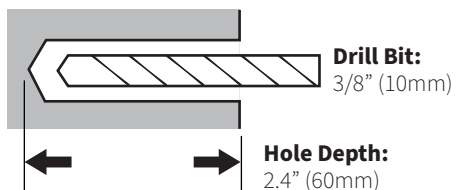
## STEP 2

### - Mounting Option 2 - Concrete/Brick Mounting

Use top plate of Mount **(A)** to mark mounting holes on your ceiling at desired location.

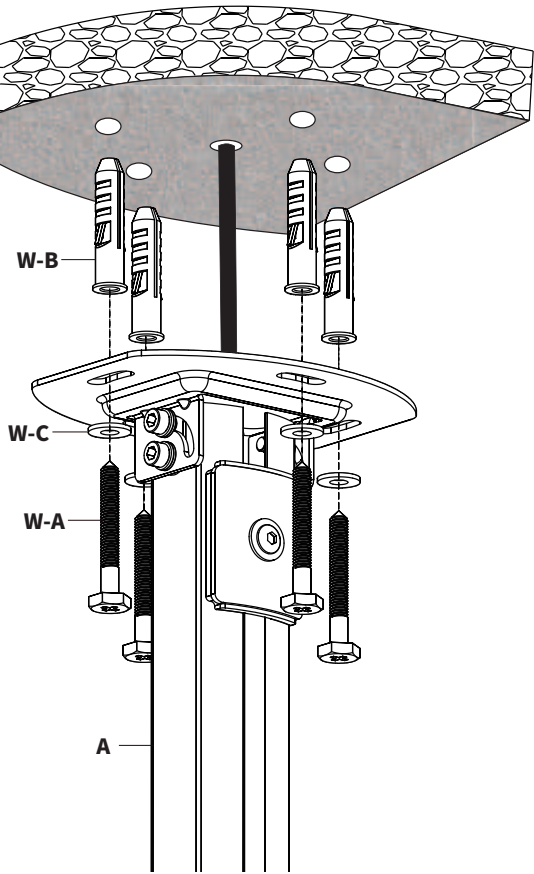


Drill mounting holes at marked locations using the infographic below.



**Concrete/Brick Mounting - Cont'd**

Press Concrete Anchors (**W-B**) into mounting holes. Attach Mount (**A**) to ceiling using ST6.3x55mm Screws (**W-A**), M6 Washers (**W-C**), and a Phillips screwdriver.

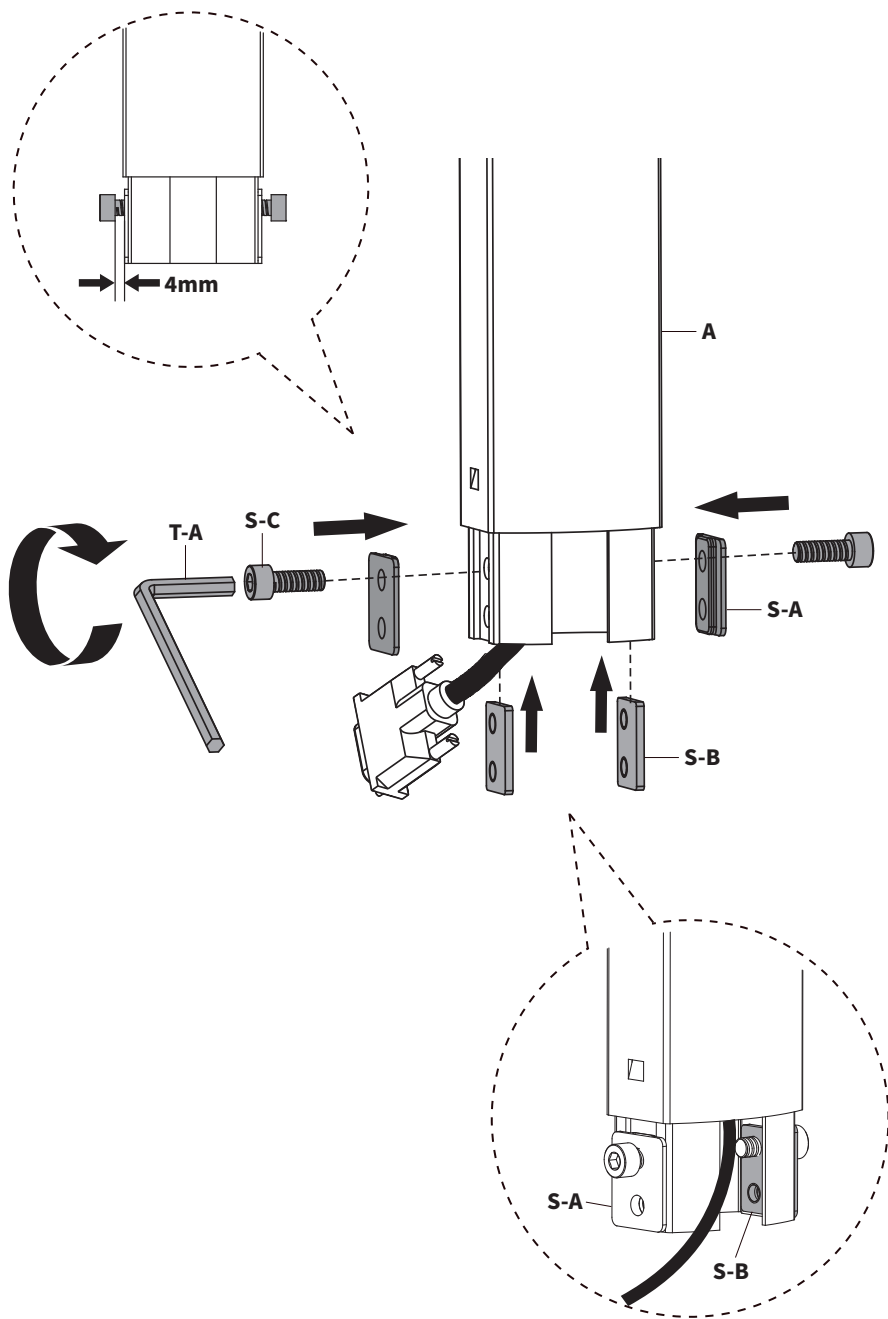




### STEP 3

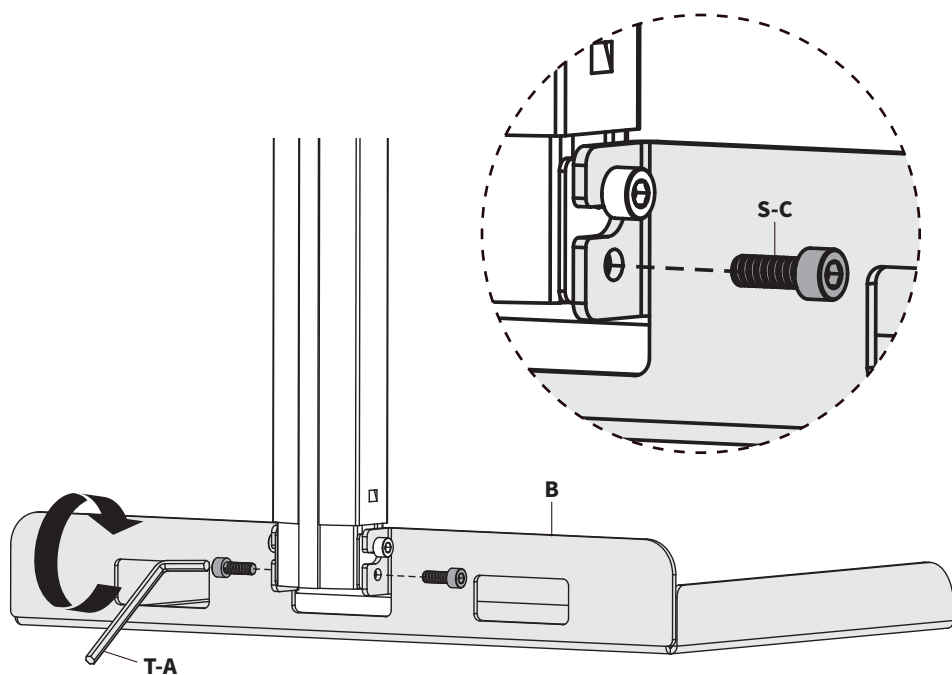
Attach Plastic Spacers (**S-A**) to the *outside* and Threaded Plates (**S-B**) to the *inside* of the bottom of Mount (**A**) using two M5x12mm Screws (**S-C**) and 4mm Allen Wrench (**T-A**).

Install Screws into the *upper holes*, leaving 4mm of thread exposed.



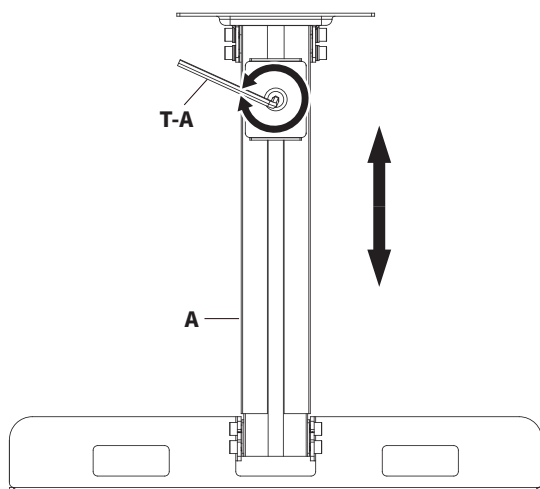
## STEP 4

Hook Shelf **(B)** onto previous installed Screws and install remaining M5x12mm Screws **(S-C)** in remaining set of holes. Fully tighten all Screws with 4mm Allen Wrench **(T-A)**.

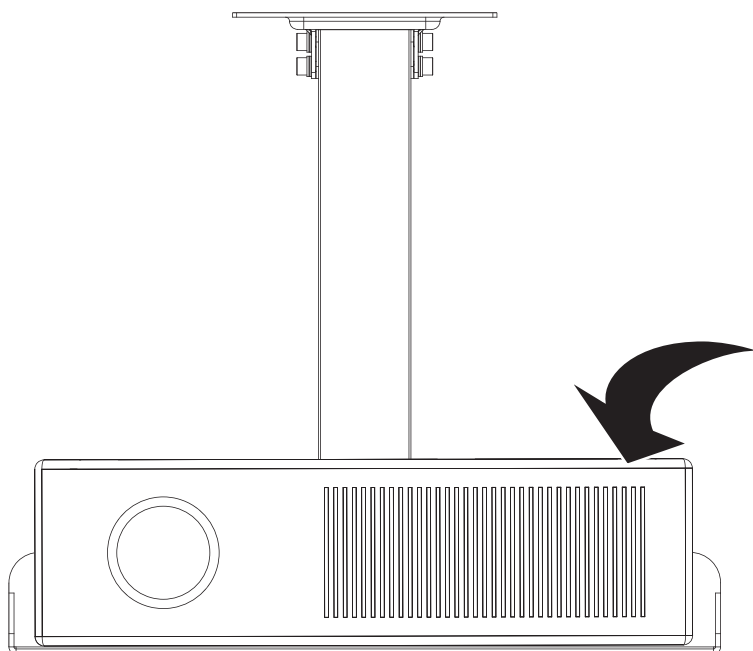


## STEP 5

To adjust height, use 4mm Allen Wrench (**T-A**) to loosen set screw in back of Mount (**A**), adjust height and re-tighten to secure.



Place your projector on Assembly and connect power with previous installed cables.





## Need Help? **We're Here For You**

Monday-Friday from 7am-7pm CST  
Saturday 8am-4pm CST



Email Us  
[help@vivo-us.com](mailto:help@vivo-us.com)



Chat with Live Agent  
[www.vivo-us.com](http://www.vivo-us.com)



Give Us a Call  
309-278-5303 ext. 1



VIVO-us



@vivo\_us



@VIVOus



VIVO