

**NEC101 series**

Cordless stick vacuum cleaner; household type

# Owner's Guide

*Thank you for purchasing your new Eureka vacuum!*

## Important instructions

**For easy assembly, please take a few moments to read this owner's guide.**

**If you have questions about your new vacuum, please contact our customer service HELPLINE at 1-800-282-2886.**

***We're here to help!***



Eureka stands by our  
Clean Promise seal.  
Learn more at  
[www.eureka.com/cleanpromise](http://www.eureka.com/cleanpromise)

**[www.eureka.com](http://www.eureka.com)**

# eureka

# Where to find important vacuum information

## Keep this information

Write the model, type and serial number here:

Date of purchase (keep your receipt) \_\_\_\_\_

Model number and type \_\_\_\_\_

Serial number \_\_\_\_\_

Find these numbers on a label on the hand vacuum, battery, and charger. Refer to these numbers when ordering parts and accessories, or if service is needed.



## This Owner's Guide provides important instructions to prolong the life of your Eureka vacuum cleaner

**Registration:** To register your product visit [www.eureka.com](http://www.eureka.com) and click on the 'Register Your Product' link in the top right corner.

**Inspection:** Carefully unpack and inspect your new Eureka vacuum cleaner for shipping damage. Each unit is tested and thoroughly inspected before shipping. For instructions regarding any shipping damage, call the Eureka Customer Service **HELPLINE** at **1-800-282-2886** immediately.

### Contents

Important safeguards. . . . .	3
What comes in the carton . . . . .	4
How to identify parts of your vacuum cleaner . . . . .	5
Easy assembly, How to install wall mount, How to charge battery and Battery indicator lights . . . . .	6
How to use your vacuum cleaner . . . . .	7
How to use hand vacuum and accessory tools . . . . .	7-8
How to maintain your vacuum cleaner . . . . .	9
How to maintain dust cup, filters and brushroll . . . . .	9
The Eureka limited warranty . . . . .	10
Thermal cut-off and problem solving . . . . .	11
How to dispose vacuum cleaner and battery pack . . . . .	11
How to order replacement parts . . . . .	12

! Follow caution information wherever you see this symbol.

# IMPORTANT SAFEGUARDS

When using an electrical appliance, basic precautions should always be followed, including the following:

## READ ALL INSTRUCTIONS BEFORE USING THIS VACUUM CLEANER

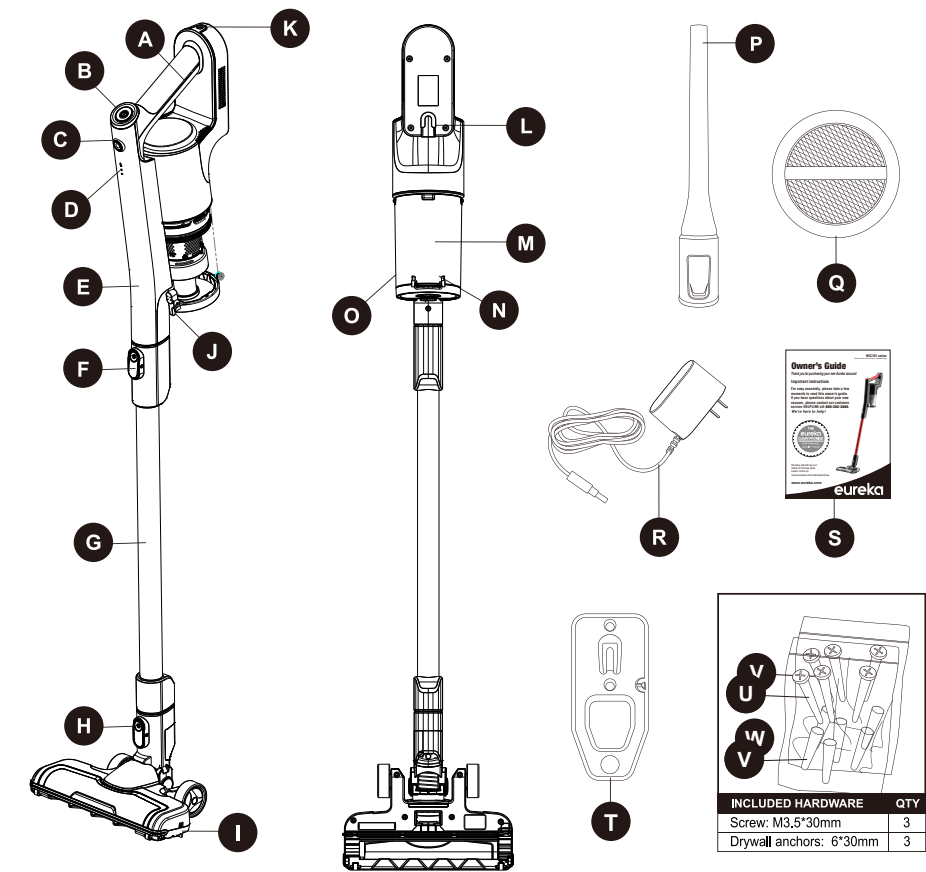
Failure to follow the warnings and instructions may result in electric shock, fire and/or serious injury.

## WARNING

- Prevent unintentional starting. Ensure the switch is in the off-position before picking up or carrying the appliance. Carrying the appliance with your finger on the switch or energizing appliance that has the switch on invites accidents.
- Do not touch nozzle when the vacuum cleaner is on. Danger.
- Do not put any object into openings. Do not use with any openings blocked; keep free of dust, lint, hair and anything that may reduce air flow.
- Do not use outdoors or on wet surfaces.
- Do not operate the vacuum cleaner or charger if it has been damaged in any way. If vacuum cleaner is not working as it should, has been dropped, damaged, left outdoors, or dropped into water, call the Eureka Customer Service **HELPLINE** at **1-800-282-2886**.
- To avoid excessive heat and damage to the unit or battery, the vacuum cleaner will not operate while charging.
- Do not allow to be used as a toy. Close attention is necessary when used by or near children.
- Use only as described in this manual. Use only manufacturer's recommended attachments.
- Recharge only with the charger specified by the manufacturer. A charger that is suitable for one type of battery pack may create a risk of fire when used with another battery pack."
- Do not pull or carry the charger by cord, use cord as a handle, close a door on cord, or pull cord around sharp edges or corners. Do not run appliance over cord. Keep cord away from heated surfaces.
- This charger is not intended for use by travelers.
- Do not use extension cords or outlets with inadequate current-carrying capacity for the charger.
- Do not unplug by pulling on cord. To unplug, grasp the plug, not the cord.
- Do not handle charger or vacuum cleaner with wet hands.
- Use appliances only with specifically designated battery packs. Use of any other battery packs may create a risk of injury and fire.
- **DO NOT MUTILATE OR INCINERATE BATTERIES. THEY BECOME DANGEROUS AT HIGH TEMPERATURES.**
- Liquid ejected from the battery may cause irritation or burns. If the liquid gets on the skin, (1) seek medical attention, (2) wash quickly with soap and water, and (3) neutralize with a mild acid such as lemon juice or vinegar. If the liquid gets into the eyes, flush them immediately with clean water for a minimum of 10 minutes.
- When battery pack is not in use, keep it away from other metal objects, like paper clips, coins, keys, nails, screws or other small metal objects, that can make a connection from one terminal to another. Shorting the battery terminals together may cause burns or a fire.
- This product is functioning at temperature range within 40°F - 104°F.
- Do not use a battery pack or appliance that is damaged or modified. Damaged or modified batteries may exhibit unpredictable behavior resulting in fire, explosion or risk of injury.
- Do not expose a battery pack or appliance to fire or excessive temperature. Exposure to fire or temperature above 266°F may cause explosion.
- Follow all charging instructions and do not charge the battery pack or appliance outside of the temperature range specified in the instructions. Charging improperly or at temperatures outside of the specified range may damage the battery and increase the risk of fire.
- Have servicing performed by a qualified repair person using only identical replacement parts. This will ensure that the safety of the product is maintained.
- Do not modify or attempt to repair the appliance or the battery pack except as indicated in the instructions for use and care.
- The terminals on both the vacuum cleaner and battery should be kept free and clean of objects. Do not insert metal objects inside the terminals.
- This vacuum cleaner creates suction. Keep hair, loose clothing, fingers, and all parts of body away from openings and moving parts.
- Do not pick up anything that is burning or smoking, such as cigarettes, matches, or hot ashes.
- Do not use without filters in place.
- Use extra care when cleaning stairs.
- Do not use to pick up flammable or combustible liquids, such as gasoline, or use in areas where they may be present.
- Store vacuum cleaner and charger indoors in a cool, dry area. To avoid electric shock and/or cleaner damage, do not expose to weather elements.
- Keep your work area well lit. Unplug electrical appliances before vacuuming them.
- Overcharging, short circuiting, reverse charging, mutilating or incinerating the cells and the batteries must be avoided.
- If a cell or a battery has leaked or vented, it should be replaced immediately using protective gloves.
- If and when necessary, these cells or batteries must be replaced with identical new ones from the same manufacturer. If a cell or a battery to be replaced is connected with other cells or batteries in series, it is recommended that the other cells or batteries be replaced with new ones at the same time.
- Reverse polarity installation of the cell or the battery in the end product must be avoided.
- Do not incinerate this appliance even if it is severely damaged. Contact local waste facility before discarding in trash.
- **WARNING:** This product can expose you to chemicals including Di(2-ethylhexyl)phthalate (DEHP), which is known to the State of California to cause cancer and to cause birth defects or other reproductive harm. For more information go to [www.P65Warnings.ca.gov](http://www.P65Warnings.ca.gov).

# SAVE THESE INSTRUCTIONS

What comes in the carton



PART	DESCRIPTION
A	Carry Handle
B	Power On/Off Button
C	Mode Button
D	Charge Indicator Lights
E	Hand Vacuum
F	Release Button for Hand Vacuum
G	Extension Pole
H	Release Button for Floor Nozzle
I	Floor Nozzle
J	Easy Empty Dust Release Latch
K	Charger Connection Point

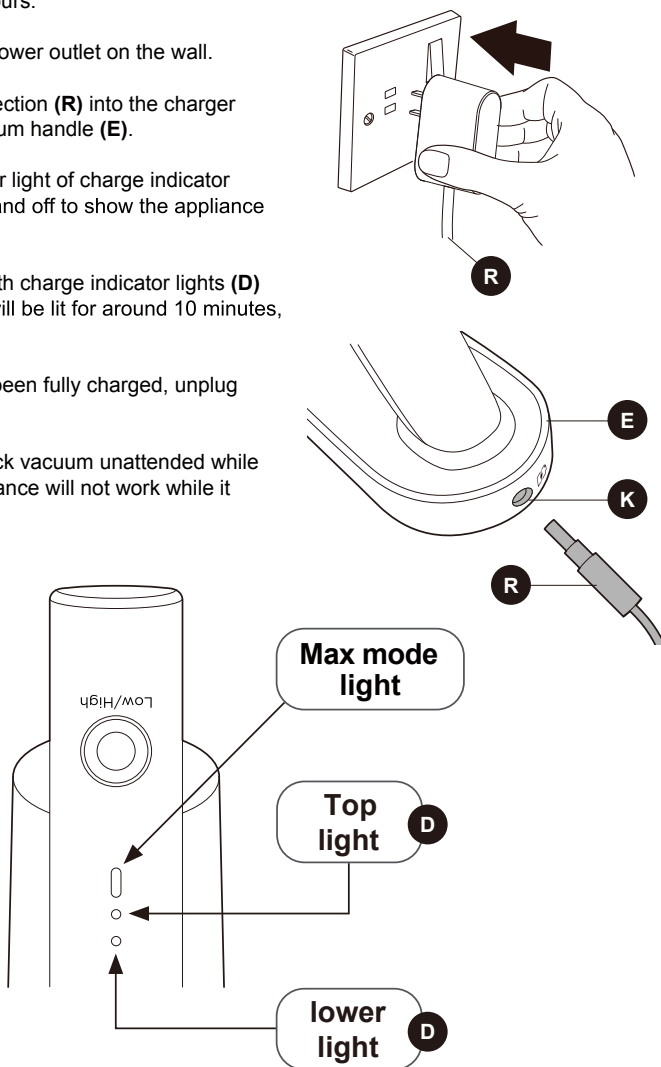
PART	DESCRIPTION
L	Mount Hook
M	Filter Assembly
N	Dust Cup Removal Button
O	Dust Cup
P	Crevice Tool
Q	Circular Sponge Filter
R	Charger MC2805A
S	User Manual
T	Wall Mount Bracket
U	Screws (M3.5*30mm) x3
V	Drywall Anchors (6*30mm) x3

## Charging the stick vacuum cleaner

Charge battery fully before using for the first time.  
This may take up to six hours.

1. Plug charger (**R**) into power outlet on the wall.
2. Plug the charger connection (**R**) into the charger port (**K**) on top of vacuum handle (**E**).
3. Both top light and lower light of charge indicator lights (**D**) will flash on and off to show the appliance is charging.
4. Once fully charged, both charge indicator lights (**D**) will stop flashing and will be lit for around 10 minutes, then they will turn off.
5. Once the vacuum has been fully charged, unplug from the power outlet.

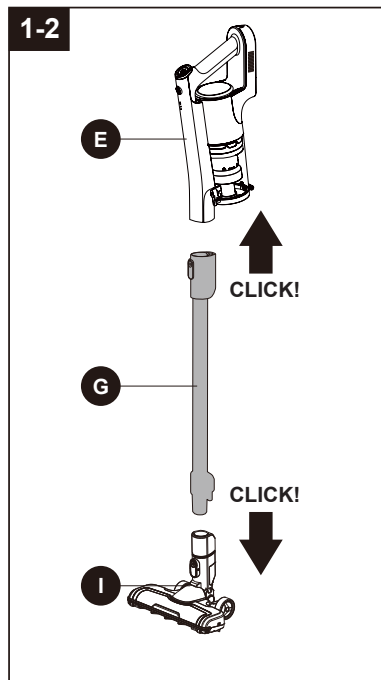
Note: Do not leave the stick vacuum unattended while charging. The appliance will not work while it is charging.



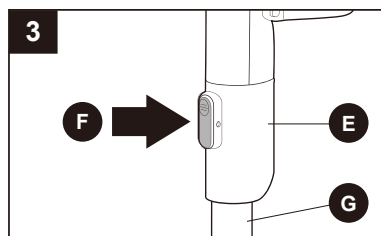
## Easy assembly

Before assembling, disassembling or attaching accessories ensure that the vacuum is turned off and not connected to a power source.

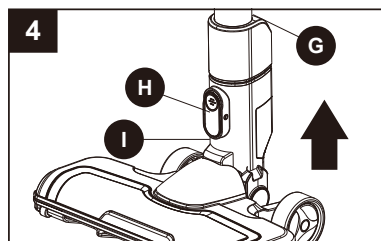
1. Align the extension pole (**G**) with the top of the floor nozzle (**I**) and push down until it clicks into place.
2. Align the hand vacuum (**E**) with the top of the extension pole (**G**) and push down until it clicks into place. The stick vac is now fully assembled and ready to use.



3. To disassemble the hand vacuum (**E**) from the extension pole (**G**), simply push the release button for hand vacuum (**F**) on the extension pole (**G**) and pull away.



4. To remove the floor nozzle (**I**) from the extension pole (**G**), push the release button for floor nozzle (**H**) down and pull the extension pole (**G**) up and out.

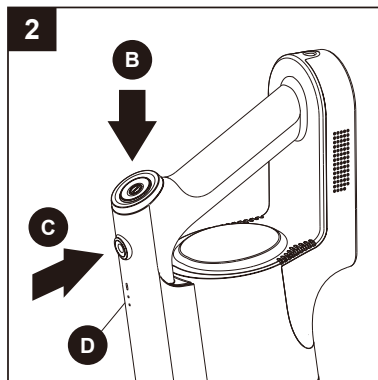


## How to use the stick vacuum cleaner

---

Ensure the stick vac is fully charged and assembled before using. Always take care when vacuuming stairs.

1. There are two power settings on the stick vac:  
Max mode (this has a higher suction power but a shorter running time, approx 15 mins) and Eco mode (lower suction power with a longer running time, approx 30 mins).  
The stick vac will always start in Max mode. The run time may vary depending on the surface being cleaned.
2. For the 'Max' mode simply press the power button **(B)**, while for 'Eco' mode press the power button **(B)** followed by the mode button **(C)**. The Max mode light will illuminate when in 'Max' mode and go out when switched to 'Eco' mode. When required, press the power button **(B)** again to turn off the stick vac.
3. Move the floor nozzle back and forth over the surface. Use even strokes. Don't press hard; allow the stick vac to suck away the debris.
4. The stick vac has charge indicator lights **(D)**, these are the two small lights on the handle.



**While charging** – the lower light will flash and the top light is off.

**Half charged** – the lower light is on and the top light will flash.

**Fully charged** – Both lights are on for around 10 minutes, then they will turn off.

When in use and the battery is almost gone, the bottom light will be off and the top light will flash. After approximately 10 seconds the stick vac will automatically switch off.

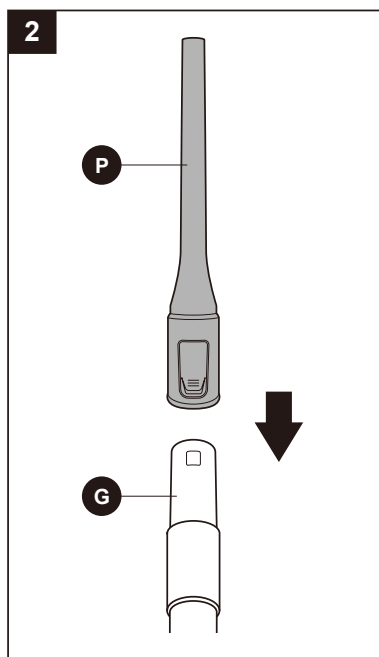
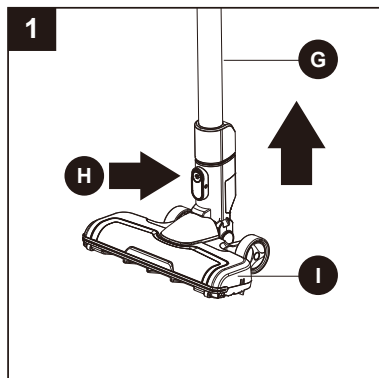
5. It is advisable to empty the dust cup after each use. For best performance, check the filters are clean (see the 'Removing and cleaning the dust cup and filters' section of this manual).

## How to use the stick vacuum cleaner

When changing the attachment ensure the stick vac is switched off.

The crevice tool (**P**) can fit directly onto the hand vacuum (**E**) for close up vacuuming and low level dusting and cleaning. For high level cleaning the tools can fit on the end of the extension pole (**G**).

1. Remove the floor nozzle (**I**) from the extension pole (**G**) by pushing down on the release button for floor nozzle (**H**) and pulling the extension pole (**G**) away from the floor nozzle (**I**).
2. Slide the crevice tool (**P**) onto the end of the extension pole (**G**) until it clicks into place. The attachment is now ready to use.





# How to maintain your vacuum cleaner

## Dust cup- Empty after each use

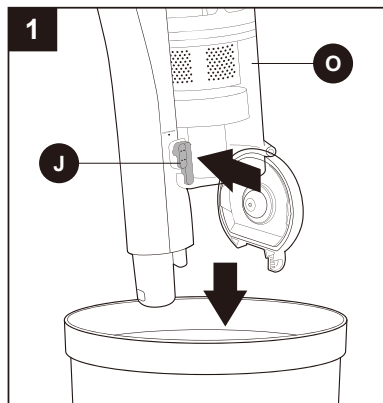
Ensure the stick vac is switched off and any attachments are removed before emptying the dust cup.

1. Hold the dust cup **(O)** assembly over a household bin and push the dust release latch **(J)** on the side of the dust cup. The debris will fall out into the bin.

Please note: Do not allow the dust cup to overfill. Don't exceed the MAX level marker. Empty regularly.

Every time you empty the dust cup, check the filter assembly and tap gently over the household bin to remove any excess dust.

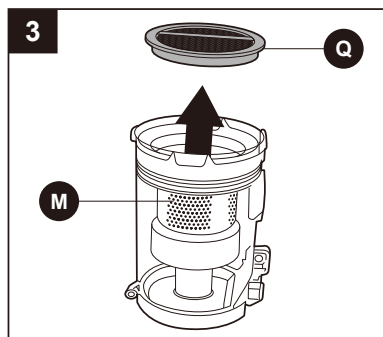
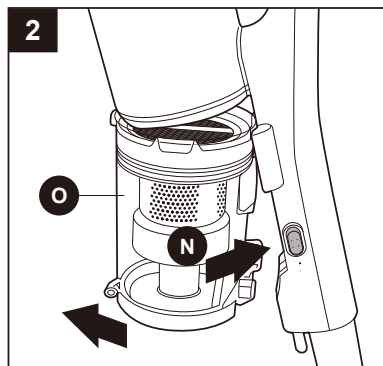
2. Once empty, close the lid until it clicks shut.



## REMOVING AND CLEANING THE DUST CUP AND FILTERS

Before starting any cleaning, ensure the stick vac is not charging and is switched off. It is easier to remove the dust cup without any attachments on the stick vac.

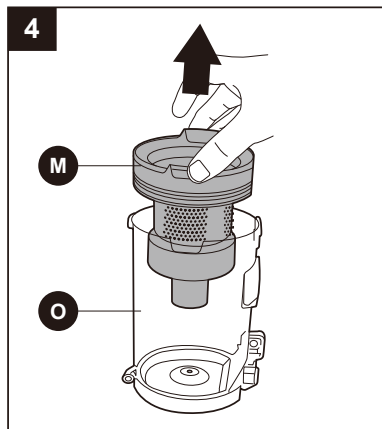
1. Empty the dust cup as shown in the 'Emptying the dust cup' section of this manual.
2. Press the dust cup removal button **(N)** located on the side of the main body near the bottom of the dust cup **(O)**. Then pull the dust cup away from the main body, keeping the cup fairly upright.
3. The dust cup houses the circular sponge filter **(Q)** and filter assembly **(M)**. Firstly remove the circular sponge filter **(Q)** by pinching the ribbon material at the top of the filter and pulling upwards, then set aside.



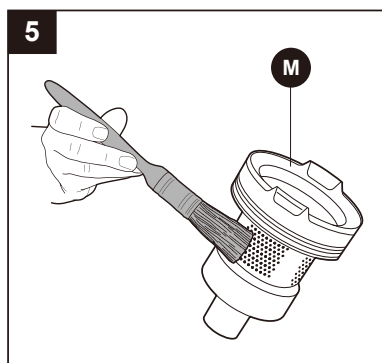
## REMOVING AND CLEANING THE DUST CUP AND FILTERS (CONTINUED)

4. Pinch either side of the filter assembly (**M**) and pull upwards away from the dust cup (**O**). Tap the filter assembly (**M**) gently over the household bin to remove any large amounts of dust.

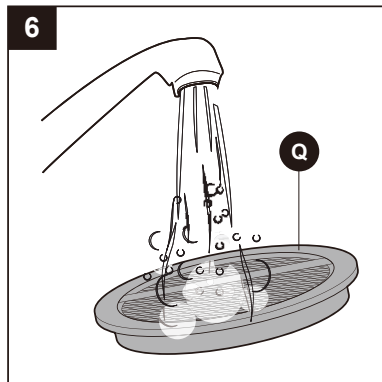
**Note:** Do not allow the dust cup to overfill. Don't exceed the MAX level marker. Empty regularly.



5. Remove anymore excess dust from the filter assembly (**M**) using a soft brush or a clean paint brush. The filter can be broken down into three parts. Hold the top section and twist the lower section in the direction of the arrow and the unlock padlock icon.

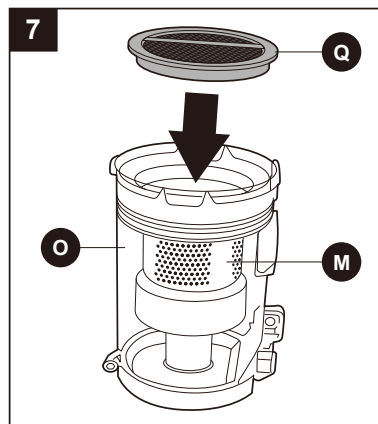


6. Rinse the dust cup, filter assembly parts and circular sponge filter (**Q**) under warm water until the water runs clear and leave to dry for 24 hours.

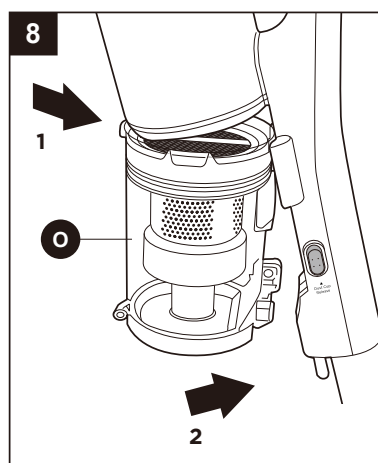


## REMOVING AND CLEANING THE DUST CUP AND FILTERS (CONTINUED)

7. Once all the parts are thoroughly dry, reassemble the filter assembly (**M**) parts following the arrow and the icon for the locked padlock and place it back into the dust cup (**O**). Don't forget to put the circular sponge filter (**Q**) back in the top of the filter assembly.



8. Replace the dust cup (**O**) to the main body by hooking the channel on the top of the dust cup (**O**) with the clasp on the main body (1). Push the dust cup (**O**) back towards the main body until you hear it click into place (2). Please note: Do not allow the dust cup to overfill. Don't exceed the MAX level marker. Empty regularly.



**Note:** It is important to regularly maintain and clean the filters. A clogged filter reduces suction power and can shorten the life of your stick vac.

Below is a recommended guide for how often you should clean the filters:

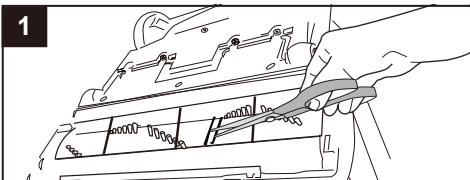
FILTER TYPE	RECOMMENDED CLEANING TIMES
Filter assembly ( <b>M</b> )	<ul style="list-style-type: none"> <li>• Shake out debris when you empty the dust cup. Use the soft dusting brush to gently remove any dust build-up.</li> <li>• Rinse under warm water once a month or more often if required.</li> </ul>
Circular sponge filter ( <b>Q</b> )	<ul style="list-style-type: none"> <li>• Occasionally remove any dust/debris as necessary. The filter can also be rinsed under warm water once a month.</li> </ul>

## REMOVING AND CLEANING THE FLOOR NOZZLE AND ROLLER BRUSH

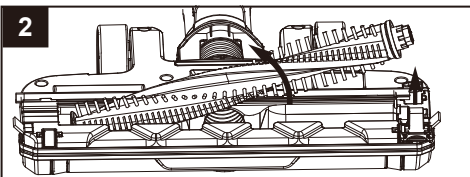
Before starting any cleaning, ensure the stick vac is not charging and is switched off and remove the floor nozzle from the rest of the stick vac.

If the roller brush becomes tangled during use, the automatic thermal cut out will shut off the stick vac. If that happens, please follow below steps.

1. Step on floor nozzle to lower handle. Turn vacuum face down on floor. Use scissors to clip heavy threads or strings.

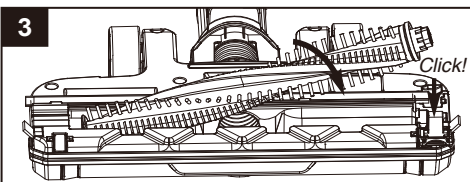


2. If debris cannot be removed easily, locate the brushroll release tab on the right side and open the brushroll cover. Remove the brushroll and clear any tangled hair and remaining debris.



To reassemble:

1. Align one end of brushroll with floor nozzle gear.
2. Press other end into slot.
3. Replace brushroll release tab into slot and press down to click it into place.



## CLEARING A BLOCKAGE

Ensure the stick vac is not plugged into the main power supply and is switched off before dismantling the vac.

The stick vac would only become blocked if the dust cup has exceeded the 'Max' level, the filters are clogged up or a large object has been sucked up.

1. Check the dust cup **(O)** and empty if necessary.
2. Check the 2 filters **(M)** and **(Q)** in the unit, remove any debris/dust and wash if necessary.
3. If the floor nozzle **(I)** or crevice tool **(P)** were in use, detach them from the hand vacuum **(E)** or extension pole **(G)**.
4. Detach the extension pole **(G)** and look down it to see if there are any blockages. If there are, use the handle of a broom to clear the obstruction. Take care not to damage the pole in the process.
5. Check the roller brush for any hair or thread which may have become wrapped around the roller. Cut away with a pair of scissors. To do this safely, remove as shown in the 'Removing and cleaning the floor nozzle roller brush' section of this manual. Every time you empty the dust cup, check the filter assembly and tap gently over the household bin to remove any excess dust.
6. Once empty close the lid until it clicks shut.

## STORING THE CORDLESS STICK VAC

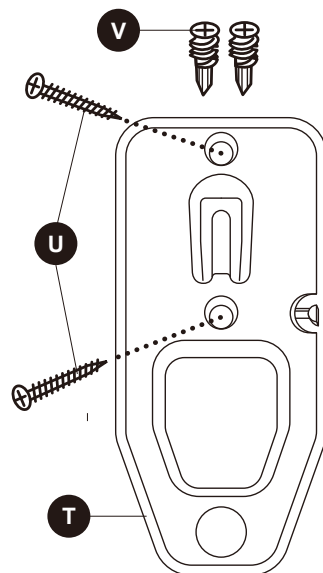
Your stick vac can be stored safely and securely by hanging from the wall mount **(T)** supplied with your product or by removing all the attachments and stowing together in a cupboard. Either way will help avoid the product falling over and causing damage.

Always turn off and unplug from the mains supply before storing.

1. Remove any attachments if the stick vac was last used with them on.
2. Store the stick vac and accessories away safely in a dry place.

## INSTALLING THE WALL MOUNT BRACKET

1. Choose a location near a power outlet. Locate a point high enough on the wall to allow the wand and floor nozzle to hang freely.
2. Place the mount (**T**) against the wall and use a pencil to mark drill holes.
3. Drill holes (with 1/4" bit) and insert drywall anchors (**V**). Insert screws (**U**) through holes on mount and tighten until firmly attached.



## TROUBLESHOOTING

PROBLEM	WHAT TO DO
The stick vac is not cleaning well	<ol style="list-style-type: none"> <li>1. Empty the dust cup (<b>O</b>)</li> <li>2. Remove excess dust from the filters</li> <li>3. Wash the filters (<b>M</b>) and (<b>Q</b>)</li> <li>4. Check for blockages</li> </ol>
The stick vac has stopped or won't work.	<ol style="list-style-type: none"> <li>1. Charge the vac (check the mains socket works and the switch is turned on)</li> <li>2. It might be blocked – check items 1 to 4 above</li> <li>3. The thermal cut out activated. Switch off the vac and leave the motor to cool for an hour then try using again.</li> </ol>

## The Eureka 1.5 year limited warranty

Midea America Corp. ("Eureka"), subject to the terms and conditions herein, warrants this vacuum cleaner to be free from defects in material and workmanship for a term of one and a half years from the date of original purchase when used in accordance with the Eureka operating and maintenance instructions and under normal household usage. This warranty is granted only to the original purchaser and members of immediate household, and is applicable only to original purchases from Eureka authorized resellers.

### What Eureka will do:

Eureka will, at its option, repair or replace a defective vacuum or vacuum part that is covered by this warranty. Repairs may be performed using new or refurbished parts that meet or exceed Eureka specifications for new parts. If Eureka elects to replace the vacuum, the replacement may be a reconditioned unit. Depending on availability of products, Eureka reserves the right to provide you with a replacement product that is the same or similar, or substitute equivalent of the original product. As a matter of warranty policy, Eureka will not refund the consumer's purchase price.

### This warranty does not cover:

- Battery module and battery components. The battery module and its components are covered by a separate one-year limited battery warranty.
- Normal wear and tear of the vacuum and vacuum parts that require replacement under normal use such as disposable dust bags, filters, drive belts, light bulbs, brush-roll, bristles, impellers and cleaning.
- Damages or malfunctions resulting from: improper or unreasonable use or maintenance, abuse, negligence, failure to follow instructions contained in any written materials that accompany the product, deterioration by reason of excess moisture, corrosive atmosphere, lightning, power surges, connections to improper voltage supply, unauthorized alteration, or other external causes such as extremes in temperature or humidity, modifications, scratches or discoloration, accidents, misuse, or acts of God. This warranty also does not cover damage resulting from repair or attempted repair by anyone other than Eureka or an authorized Eureka Warranty Station. This warranty is not applicable to any product that has been altered or on which the serial number has been defaced, modified or removed. Altering, erasing, or forging any proof-of-purchase documents voids any applicable product warranty.

### Obtaining warranty service:

To obtain warranty service you must contact the Eureka Service Team, toll free, at 1-800-282-2886 or email [customerserviceusa@midea.com](mailto:customerserviceusa@midea.com), to discuss the warranty claim and procedures to be followed. All warranty claims must include submission of proof-of-purchase documentation. For additional information, you may also visit [www.eureka.com](http://www.eureka.com).

### Shipping charges:

You will be responsible for any initial shipping and insurance charges if the defective product(s) must be shipped for warranty service or warranty evaluation; however, Eureka or a Eureka Authorized Warranty Station will pay the return shipping charges if repairs are covered by the warranty. When returning parts for repair, you must include the model, type and serial number located on the rating plate. If any product submitted for warranty service is found to be ineligible, an estimate of repair cost will be furnished and the repair performed only if requested by the owner and upon receipt of payment or acceptable arrangements for payment.

### Further limitations and exclusions:

Any warranty that may be implied in connection with your purchase or use of the vacuum, including any warranty of Merchantability or any warranty of Fitness For A Particular Purpose is limited to the duration of this limited warranty. Some states do not allow limitations on how long an implied warranty lasts, so the above limitations may not apply to you.

Your relief for the breach of this warranty is limited to the relief expressly provided above. In no event shall the manufacturer be liable for any consequential or incidental damages you may incur in connection with your purchase or use of the vacuum. Some states do not allow the exclusion or limitation of incidental or consequential damages, so the above limitation or exclusion may not apply to you. This warranty gives you specific legal rights. You may also have other rights, which may vary by state.

## The Eureka 12-month limited battery warranty

Midea America Corp. ("Eureka"), subject to the terms and conditions herein, warrants this Battery Module to be free from defects in material and workmanship for a term of one year from the date of original purchase when used in accordance with the Eureka operating and maintenance instructions and under normal household usage. This warranty is granted only to the original purchaser and members of immediate household, and is applicable only to original purchases from Eureka authorized resellers.

### What Eureka will do:

Eureka will, at its option, repair or replace a defective Battery Module or battery part that is covered by this warranty. Repairs may be performed using new or refurbished parts that meet or exceed Eureka specifications for new parts. If Eureka elects to replace the Battery Module, the replacement may be a reconditioned unit. Depending on availability of products, Eureka reserves the right to provide you with a replacement product that is the same or similar, or substitute equivalent of the original product. As a matter of warranty policy, Eureka will not refund the consumer's purchase price.

### This warranty does not cover:

- Normal wear and tear of the Battery Module and battery parts that require replacement under normal use.
- Damages or malfunctions resulting from: improper or unreasonable use or maintenance, abuse, negligence, failure to follow instructions contained in any written materials that accompany the product, deterioration by reason of excess moisture, corrosive atmosphere, lightning, power surges, connections to improper voltage supply, unauthorized alteration, or other external causes such as extremes in temperature or humidity, modifications, scratches or discoloration, accidents, misuse, or acts of God. This warranty also does not cover damage resulting from repair or attempted repair by anyone other than Eureka or an authorized Eureka Warranty Station. This warranty is not applicable to any product that has been altered or on which the serial number has been defaced, modified or removed. Altering, erasing, or forging any proof-of-purchase documents voids any applicable product warranty.

### Obtaining warranty service:

To obtain warranty service you must contact the Eureka Service Team, toll free, at 1-800-282-2886 or email [customerserviceusa@midea.com](mailto:customerserviceusa@midea.com), to discuss the warranty claim and procedures to be followed. All warranty claims must include submission of proof-of-purchase documentation. For additional information, you may also visit [www.eureka.com](http://www.eureka.com).

### Shipping charges:

You will be responsible for any initial shipping and insurance charges if the defective product(s) must be shipped for warranty service or warranty evaluation; however, Eureka or a Eureka Authorized Warranty Station will pay the return shipping charges if repairs are covered by the warranty. When returning parts for repair, you must include the model, type and serial number located on the rating plate. If any product submitted for warranty service is found to be ineligible, an estimate of repair cost will be furnished and the repair performed only if requested by the owner and upon receipt of payment or acceptable arrangements for payment.

### Further limitations and exclusions:

Any warranty that may be implied in connection with your purchase or use of the Battery Module, including any warranty of Merchantability or any warranty of Fitness For A Particular Purpose is limited to the duration of this limited warranty. Some states do not allow limitations on how long an implied warranty lasts, so the above limitations may not apply to you.

Your relief for the breach of this warranty is limited to the relief expressly provided above. In no event shall the manufacturer be liable for any consequential or incidental damages you may incur in connection with your purchase or use of the Battery Module. Some states do not allow the exclusion or limitation of incidental or consequential damages, so the above limitation or exclusion may not apply to you.

This warranty gives you specific legal rights. You may also have other rights, which may vary by state.

## Problem solving



**Make sure vacuum cleaner is off and charging plug is unplugged.**

### NOTICE : Thermal cut-off

This vacuum cleaner has a special thermostat that protects the vacuum cleaner in case of motor overheating. **If the vacuum suddenly shuts off**, proceed as follows: 1) Check the vacuum for a possible source of overheating such as a full dust cup, blocked wand or clogged filters. If these conditions are found, fix them and wait at least 30 minutes before attempting to use the vacuum. 2) After the **30 minute** period, press the power button. If the vacuum still does not work, call the Eureka Customer Service **HELPLINE** at **1-800-282-2886**.

Problem	Solution
<b>Motor will not start</b>	<ul style="list-style-type: none"><li>• Make sure cleaner is fully powered.</li><li>• Push charger securely into electrical outlet, try another outlet or check circuit breaker.</li><li>• See detailed “thermal cut-off” instructions above.</li></ul>
<b>Charging indicator lights are not lit while charging</b>	<ul style="list-style-type: none"><li>• Make sure charger is securely inserted into electrical outlet.</li><li>• Make sure charging plug is securely inserted into handle.</li><li>• Indicator lights stop blinking when fully charged.</li></ul>
<b>Not enough suction power</b>	<ul style="list-style-type: none"><li>• Empty dust cup and clean or change filters. See page 9 for maintenance instructions.</li><li>• Make sure cleaner is fully powered. Charge battery.</li><li>• Remove clogs that restrict the airflow.</li></ul>
<b>Not enough running time</b>	<ul style="list-style-type: none"><li>• Make sure cleaner is fully powered.</li><li>• Charge battery for up to six hours before using.</li></ul>
<b>Brushroll will not turn</b>	<ul style="list-style-type: none"><li>• Check brushroll for debris. See page 9 for maintenance instructions.</li></ul>

## Discarding the vacuum and battery pack



Before you discard this vacuum, dispose of battery in an environmentally safe manner. Do not discard battery with your regular household trash.



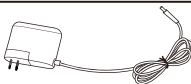

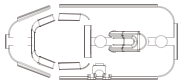
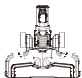

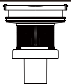

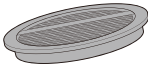
### Important battery disposal information.

**To find a disposal location nearest you, call 1-800-822-8837.**



**To preserve natural resources, please recycle or dispose of expired battery pack properly.** This product contains a lithium-ion battery. It must be disposed of properly. Local laws may prohibit disposal of lithium-ion batteries in ordinary trash. Consult your local waste authority for information regarding available recycling and/or disposal options.



Image	Part name	Part # (fits models)
	Charger	P01101
	Crevice tool	Z0101 (all)
	Wall mount	P0701
	Floor nozzle	P1007
	Wand	P1008
	Cyclone (no filter)	P1009
	Brush roll	P0601
	Filter	P1006