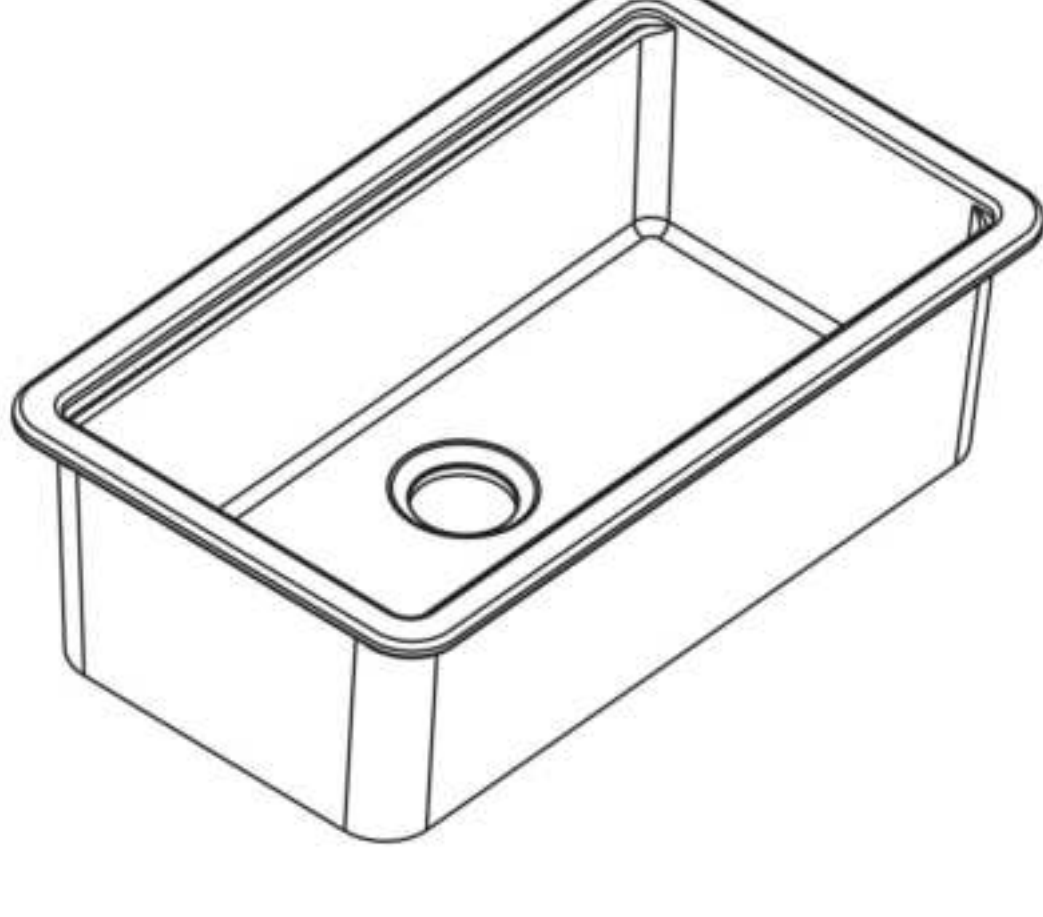


Workstation Drop-in Kitchen Sink



☎ 585 488 8279 @ jodie.j.spencer@outlook.com

Prior to Installation:



- Inspect kitchen sink to ensure no damages have occurred while in shipping.
- Observe all plumbing and building codes in accordance with your state and local requirements.
- Additional floor and wall preparations may be necessary to avoid damage to the product.
- Make sure to purchase the correct cabinet for your undermount sink.
- Installation with laminate countertop not recommended.
- All dimensions are nominal! Be sure to measure your cabinet to installation.

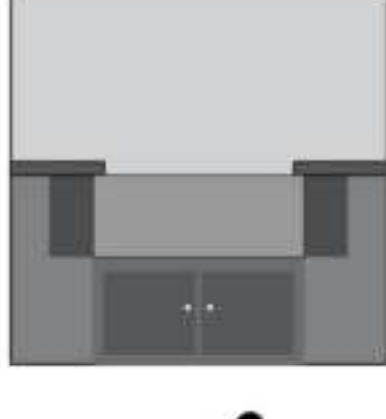
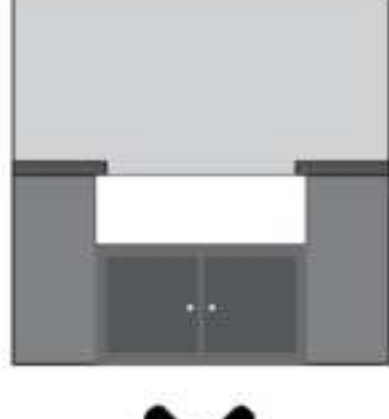
General Recommendations:

Please read installation and maintenance instructions thoroughly before installing the kitchen sink.
Be sure to use proper tools and always wear proper personal safety accessories for your protection.

**If you have any questions or concerns
please contact us:**

1. INSTALLATION OPTIONS

- We recommend Undermount or Drop-in kitchen sink installation.
- Ensure there is adequate room for the faucet and backsplash installations.



2. INSTRUCTIONS

- Unpack and inspect the sink for any shipping damages and ensure that none of the required pieces are missing. If you find any damages, do not install, please contact us.
- We recommend consulting an experienced installer to make for assistance, and providing the installer with the actual size of our sink to ensure smooth installation.
- Please use assistance when lifting the sink in order to avoid personal injury.
- We recommend consulting a professional if you are unfamiliar with installing kitchen fixtures and plumbing. DeerValley accepts no liability for any damages to the floor, walls, plumbing or personal injury during installation.

SUGGESTED TOOLS AND MATERIALS



Framing Square



Safety Glasses



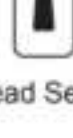
Pencil



Tape Measure



Level



Thread Sealant



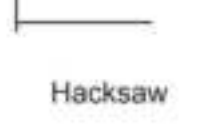
Wood Shims



Basin Wrench



Drill

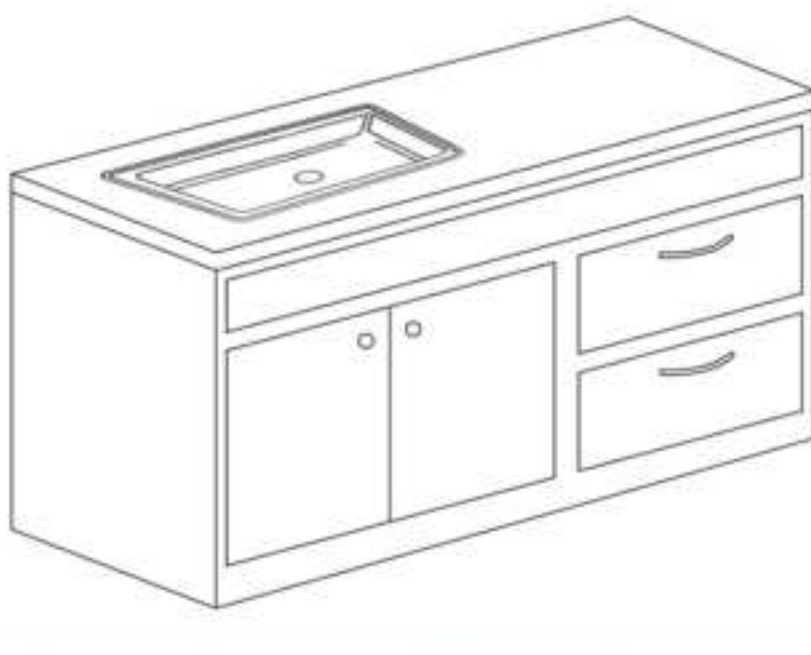


Hacksaw

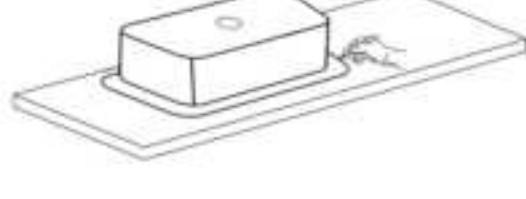
- Sealant - We recommend the use of a stone, marble and granite silicone caulk or a general purpose silicone sealant.
- Installation tools are not provided, please prepare by yourself.

3. Installation Steps:

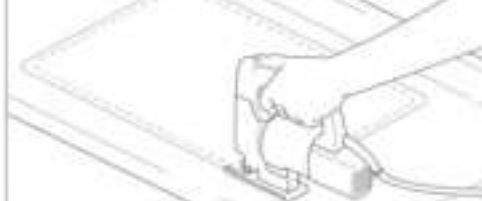
Note: Drop-in Topmount Installation Recommended



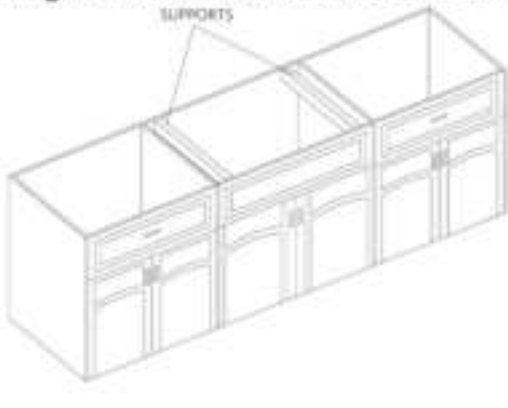
- Measure the hole for the sink: Turn the sink upside down and trace the outline directly on the countertop with a pencil. Then make a second outline about 5/16 inch smaller than the original for the hole.



- Countertop Cut-Out: Drill a starter hole inside of the cutout line. Use the saber saw and cut opening in the countertop following the inside pencil line. Trial fit the sink to check for proper fit.



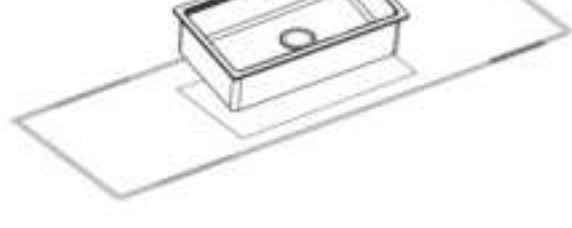
- Supporting the Sink. Mount the undermount installation customized support to the inner side walls of your cabinet. We then recommend putting plywood on the rods to create a large smooth flat surface. Drill the necessary drain holes.



- Apply silicone caulk (not included) evenly all around the top of the sink flanges. Position and align the sink under the countertop opening. Press the silicone and flange up onto the countertop.



- Insert the sink into the opening hole and verify the sink fits correctly in the opening.



3. Basket Sink Strainer Kit Installation Steps:

