

## LATEST AND GREATEST

Our team is constantly improving your product experience.  
This model may have new features or controls which are not detailed in this guide.

For the latest version of the manual, scan the QR code below.



Distributed in U.K. by: JLab c/o Tiogo Limited  
21 Headlands Business Park, Ringwood,  
Hampshire BH24 3PB United Kingdom  
EU Importer: JLab  
5927 Landau Ct., Carlsbad, CA 92008  
USA

## WITH LOVE FROM THE LAB

We have lots of different ways to show we care.

### GET STARTED + FREE GIFT

**Product updates | How-to tips | FAQs & more**  
Go to [jlab.com/register](http://jlab.com/register) to unlock your  
customer benefits including a free gift.

Gift for US only. No APO/FPO/DPO addresses.

### WE GOT YOUR BACK

We're obsessed with creating the best possible experience  
around owning our products. If you have any questions,  
concerns, or feedback, we're here for you. Contact a real  
human on our U.S.-based customer support team:

**Website:** [jlab.com/contact](http://jlab.com/contact)

**Email:** [support@jlab.com](mailto:support@jlab.com)

**Phone U.S.:** +1 (405) 445-7219  
(Check hours [jlab.com/hours](http://jlab.com/hours))

**Phone U.K./EU:** +44 (20) 8142 9361  
(Check hours [jlab.com/hours](http://jlab.com/hours))

Visit [jlab.com/warranty](http://jlab.com/warranty) to initiate a return or exchange.

**Instructional videos at:**  
**HELP.JLAB.COM**  
or **INTL.JLAB.COM/MANUALS**

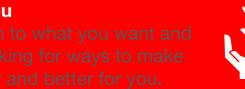
FCC ID: 2AHYV-FLOWKB  
2AHYV-FLOWM  
2AHYV-MKDGLC  
IC: 21316-FLOWKB  
21316-FLOWM  
21316-MKDGLC



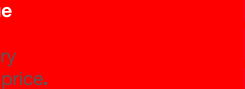
## WELCOME TO THE LAB

The Lab is where you'll find real people, developing really great products,  
in a real place called San Diego.

## PERSONAL TECH DONE BETTER



**Designed for You**  
We actually listen to what you want and  
we're always looking for ways to make  
everything easier and better for you.



**Surprisingly Awesome Value**  
We always pack in the most  
functionality and fun into every  
product at a truly accessible price.

**#yourkindoftech**

Tech all about you



**FLOW**KEYBOARD  
+ **FLOW**MOUSE

## QUICK START GUIDE



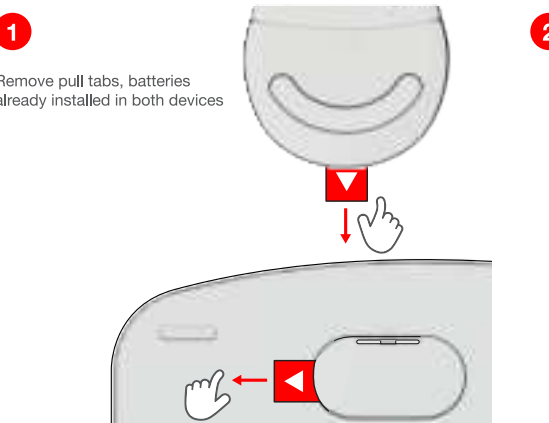
**TROUBLESHOOTING**

- If your device is not connecting to Bluetooth, forget the Flow Keys or Flow Mouse in your device settings.  
Turn device off and on. Press and hold for bluetooth connection until blinking blue light indicates pairing  
mode. Reenter your device settings to re-pair.
- If the USB dongle is not registering keyboard:
  1. Remove dongle
  2. Press Fn + 1 to enter 2.4G connection
  3. Press + hold CONNECT button until green light blinks quickly
  4. Plug dongle back in
- If the USB dongle is not registering mouse:
  1. Remove dongle
  2. Quick press Connect button until LED blinks green to indicate 2.4G mode
  3. Press and hold Connect button until green light blinks quickly
  4. Plug dongle back in

## CONNECT WITH DONGLE

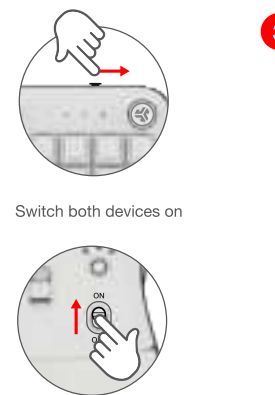
1

Remove pull tabs, batteries  
already installed in both devices



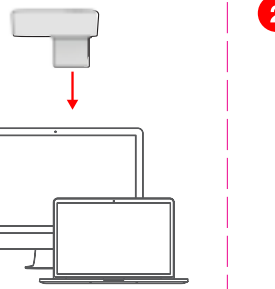
2

Switch both devices on



3

Install 2.4G USB dongle



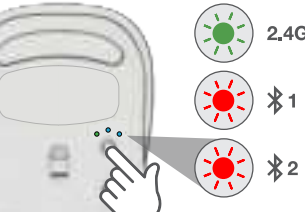
## CONNECT MOUSE WITH BLUETOOTH

1

**SWITCH CONNECTION:**  
Quick press button  
(Light switches to associated connection)

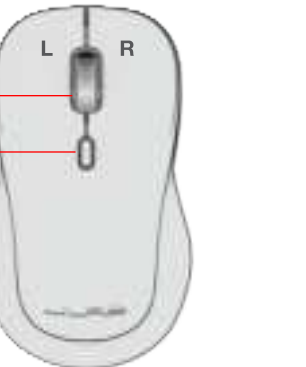
2

**PAIRING**  
Press and hold button to enter pairing mode  
Select "Flow Mouse" in device settings



**Scroll + Middle Button**

**DPI Button:**  
Toggle mouse sensitivity:  
800/Low  
1200/Medium  
1600/High  
2400/Very High



## CONNECT KEYBOARD WITH BLUETOOTH

1

**SWITCH CONNECTION:**  
Quick press Fn +  $\text{Bluetooth 1}$  or  $\text{Bluetooth 2}$   
(Light switches to associated connection color)

2

**PAIRING**  
Press hold Fn +  $\text{Bluetooth 1}$  or  $\text{Bluetooth 2}$  to enter Pairing Mode (Blinking light)  
Select "Flow Keys" in device settings



## KEYS / CONTROLS

1

**Fn + F1-F12:**  
Shortcut keys (see Shortcut Keys list)

2

**Custom Keys**  
Set commands using desktop app



**Fn + 1 / 2 / 3:**  
Quick connection switch

**Fn + Q / W / E:**  
Switch to Mac / Android / Windows keyboard layout



**2.4G**

**Bluetooth 1**

**Bluetooth 2**

## SHORTCUT KEYS

Fn +

MAC

PC

Android

Esc

F1

F2

F3

F4

F5

F6

F7

F8

F9

F10

F11

F12

Delete

N/A

Homepage

Brightness -

Brightness +

Task Control

Show Applications

Search

Desktop

Track Back

Play/Pause

Track Forward

Mute

Screenshot

Dashboard

Screen lock

N/A

Homepage

Brightness -

Brightness +

N/A

N/A

Search

N/A

Track Back

Play/Pause

Track Forward

Mute

Screenshot

N/A

Screen lock

N/A

Screen lock

N/A

Screen lock

N/A

Screen lock

N/A

Screen lock

N/A

Screen lock

N/A

Screen lock

N/A

Screen lock

N/A

Screen lock

N/A

Screen lock

N/A

Screen lock

N/A

Screen lock

N/A

Screen lock

N/A

Screen lock

N/A

Screen lock

N/A

Screen lock

N/A

Screen lock

N/A

Screen lock

N/A

Screen lock

N/A

Screen lock

N/A

Screen lock

N/A

Screen lock

N/A

Screen lock

N/A

Screen lock

N/A

Screen lock

N/A

Screen lock

N/A

Screen lock

N/A

Screen lock

N/A

Screen lock

N/A

Screen lock

N/A

Screen lock

N/A

Screen lock

N/A

Screen lock

N/A

Screen lock

N/A

Screen lock