

# Users Guide Thor Freedom Traveler A27

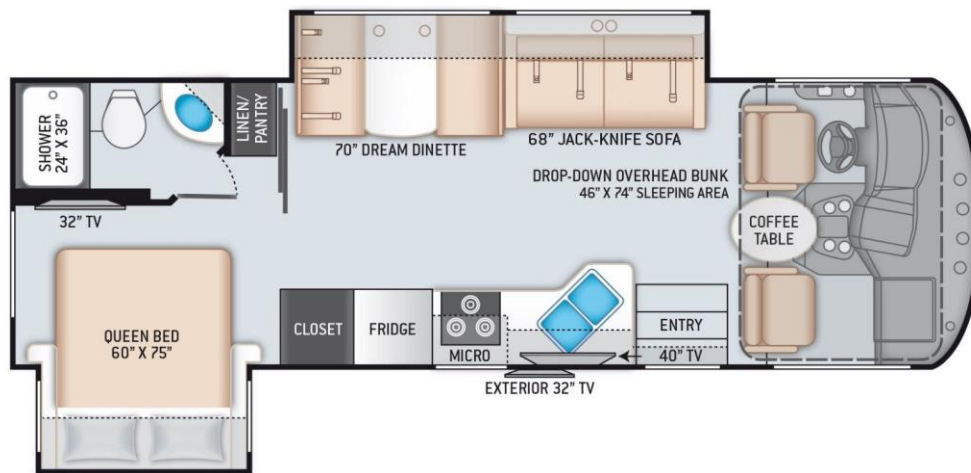
V1.0 (26 July 2023)



Editor's note: I owned a Thor Axis 25.2. Was our first RV. Had no idea where everything was or how it worked. The manual that came with the RV was worthless. Then on the Thor Forms I found a manual developed by Ed Felker. It was awesome to have everything I needed to know. So, when we got our Freedom Traveler A27, I decided to do one for it. Please feel free to add your comment or make corrections.

I would recommend you take ownership of your RV on Thor's Owners website. This link will get you there. [Owners - Thor Motor Coach](#) You register and take ownership using your VIN number. Thor then makes information and manuals about your specific RV available. One of the item I found invaluable is the schematics for the Freedom Traveler A27.

This manual applies to the 2021 Thor Freedom Traveler A27. It was exclusively built for Camping World.



## Featured Highlights

**IMPORTANT-PLEASE READ:** This brochure reflects product design, fabrication, material, components, and specifications at the date of printing, which date is disclosed below.

Photographs in the brochure may depict optional equipment or may only be available in certain floor plans. Components, appliances, and the chassis may have been manufactured.

in a calendar year before the vehicle's designated model year. All capacities are approximate. The actual length of the vehicle may differ from that indicated in the brochure due to variances in the manufacturing processes and/or installed components. All dry weights are based on standard model features and do not include optional features or equipment. Component part and appliance manufacturers issue limited warranties covering portions of the vehicle not covered under the limited warranty we issue.

Copyright Thor Motor Coach, Inc. © OH 03/11/2021

### CONSTRUCTION & EXTERIOR

- Ford® F-53 Chassis - 6.8L Triton® V10 Engine, 320HP, 460 lb.-ft. Torque - TorqShift® 6-Speed Automatic Transmission with Overdrive
- Ford® F-53 Chassis - 7.3L Triton® V8 Engine, 350HP, 468 lb.-ft. Torque - TorqShift® 6-Speed Automatic Transmission with Overdrive\*

- One-Piece Fiberglass Front Cap
- One-Piece Windshield
- Premium One-Piece TPO Roof
- HD-MAX® Exterior with Graphics Package
- MEGA-Storage™ Compartment (A30)
- Rotocast Storage Compartments
- Basement Pass-Through Storage
- Side-Hinged Flush Mount Radius Compartment Doors
- Automatic Leveling Jacks with Touchpad Controls
- Power Patio Awning with Integrated LED Lighting

- Slide out Room Topper Awnings
- 3TRAX® Wall Slide System (A30 & A32)
- Pet-Link™ Multi-Purpose Tie-Down
- Electric Entry Step
- Roof Ladder
- Frameless Windows
- 8,000-lb. Trailer Hitch with 7-pin Round Connector

### AUTOMOTIVE & COCKPIT

- 10" Touchscreen Dash Radio with Bluetooth®, Android Auto®, Apple CarPlay™ & SiriusXM® Ready\*

- Steering Wheel Audio Control\*\*
- Back-Up Monitor
- Heated/Remote Exterior Mirrors with Integrated Side View Cameras
- Cruise Control
- Tilt Steering Wheel
- Tilt and Telescoping Steering Wheel\*
- Automatic Headlights\*
- Dash Fans
- Reclining/Swivel Leatherette Captain's Chairs with Stow-Away Coffee Table
- Emergency Engine Start Switch
- Power Privacy Shade & Sunvisor on Windshield
- Privacy Curtain on Side Windows
- Dash Workstation with 110-volt & 12-volt Outlets
- 19.5" Tires with Stainless Steel Wheel Liners
- Valve Stem Extenders on Rear Wheels
- Power Drop-Down Hide-Away Overhead Bunk with Cotton Cloud™ Mattress & Bunk Ladder

### INTERIOR

- Rubber Tread Entry Steps with Lighted Step Well & Utility Storage
- Residential Vinyl Flooring
- 84" Interior Ceiling Height
- LED Lighting
- Ceiling Ducted Air Conditioning System
- Carolina Cherry Flat Panel Cabinet Doors with Black Nickel Finish Hardware
- Pressed Laminate Countertops
- Dinette Storage Drawers
- Leatherette Dream Dinette® Booth with Cup Holders
- Leatherette Sofa Bed
- Lamberquin Window Treatments
- Window Privacy Shades

### KITCHEN

- Double Door Refrigerator
- 3-Burner Gas Cooktop/Oven with Bi-Fold Cover
- Microwave Oven
- Decorative Backsplash
- Stainless Steel Double Bowl Sink with Single Handle Faucet & Pull-Down Sprayer
- Pantry (A30)
- 12-volt Attic Fan with Cover

### BEDROOM & BATHROOM

- Serta® Queen Size Bed (A27 & A30)
- Serta® King Size Bed (A32)
- Designer Headboard, Bedspread & Pillow Shams
- Linen Closet

- Foot Flush Porcelain Toilet
- Stainless Steel Bathroom Sink
- Shower with Anti-Bacterial Curtain (A27)
- Shower with Glass Door (A30 & A32)

### ENTERTAINMENT

- 39" TV in Living Area
- 32" TV in Bedroom
- Exterior 32" Swivel TV with Sound Bar & Radio
- TV Prep in Bunk Beds (A32)
- Tablet Holder and USB Charge

### Ports in Bunk Beds (A32)\*\*

- Cable TV Ready
- Digital TV Antenna
- USB Charging Ports - Bedroom & Living Area
- Winegard® Connect™ 2.0 WiFi / 4G / TV Antenna

### ELECTRICAL & PLUMBING

- Onan® RV QG 4000 Gas Generator with 30-amp Detachable Shoreline Power Cord (A27)
- Onan® RV QG 5500 Gas Generator (A30 & A32)
- 50-amp Detachable Shoreline Power Cord (A30 & A32)
- Dual 13,500 BTU Roof Air Conditioners (A30 & A32)
- Single Roof Air Conditioner (A27)
- Dual Roof Air Conditioners (A30 & A32)

- Second Auxiliary House Battery
- Battery Disconnect Switch
- Water Heater
- 1" Fresh Water Tank Drain
- Water Heater Bypass System
- Enclosed & Heated Holding Tanks
- 360° Siphon® RV Holding Tank Vent Cap
- Black Tank Flush System
- Outside Shower
- Exterior LP Connection
- Systems Control Center

### \* Late Availability

\*\* Available in units built after (10/15/2020)

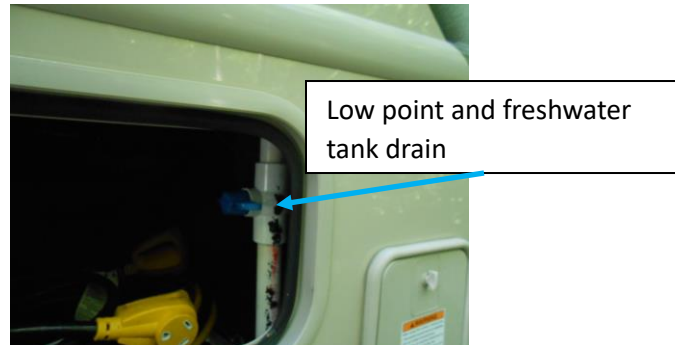
For a complete listing of available features, visit [freedom-motorhomes.com](http://freedom-motorhomes.com).

## Specifications

|                                  |                         |
|----------------------------------|-------------------------|
| <b>MSRP</b>                      | <b>\$130,350</b>        |
| <b>Warranty</b>                  |                         |
| Basic Warranty                   | 12 months/15,000 miles  |
| Structure Warranty               | 24 months/ 24,000 miles |
| Roof Warranty                    | 12 years                |
| Chassis Warranty                 | 36 months/ 60,000 miles |
| Powertrain Warranty              | 60 months/ 60,000 miles |
|                                  |                         |
| <b>Engine</b>                    |                         |
| Ford F53 Chassis                 |                         |
| Triton V8                        | 7.3L                    |
| HP                               | 230                     |
| Torque                           | 468 lb-ft               |
| <b>Transmission</b>              |                         |
| TorqShift                        | 6 speed with overdrive  |
|                                  |                         |
| <b>Chassis Specifications</b>    |                         |
| Gross Vehicle Weight (GVWR)      | 16,000 lbs              |
| Combined Gross Weight (GCWR)     | 23,000 lbs              |
| Wheelbase                        | 178"                    |
| Exterior Length (without ladder) | 28' 5"                  |
| Exterior Width (without mirrors) | 99"                     |
| Exterior Height (with A/C)       | 12' 2"                  |
| Awning Size                      | 13'                     |
| Fuel Tank Capacity               | 80 gallons              |
| LPG                              | 88 lbs (20.8 gals)      |
| Fresh Water                      | 50 gallons              |
| Gray Water                       | 40 gallons              |
| Black Water                      | 40 gallons              |
| Furnace                          | 30,000 btu              |
| Air Condition Rating             | 13,500 btu              |
| Hitch Weight Rating              | 8,000 lbs               |
| Tire Size Front                  | 245/70R 19.5G           |
| Rear Tire Size                   | 245/70R 19.5G           |

## Location of Low Point Drain

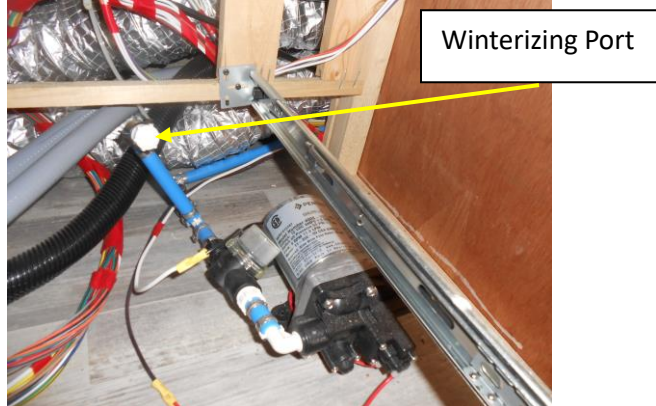
Location of Low Point Drain located in rear storage compartment at the back near propane hookup on the passenger side. This is also the freshwater tank drain.



Low point and freshwater tank drain

## Location of Water Pump

Water Pump is located under the wardrobe. Pull out the bottom drawer for access. The pump is equipped with a Winterizing port. Interestingly ours was not screwed into the floor. Fixed that. Now that it is attached to the floor makes less noise when in use.



Winterizing Port

We replaced our Dometic WH-6GEA 6-gallon water heater. We replaced it with a Furrion FWH09EA-PS Tankless water heater. It fits in the existing hole and the 16.14" door fits the opening with no modifications.



## Location of slide and bed controllers

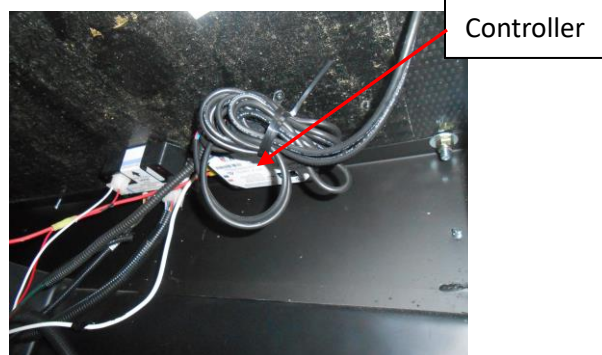
Overhead bed control is in the storage compartment above the driver's seat.



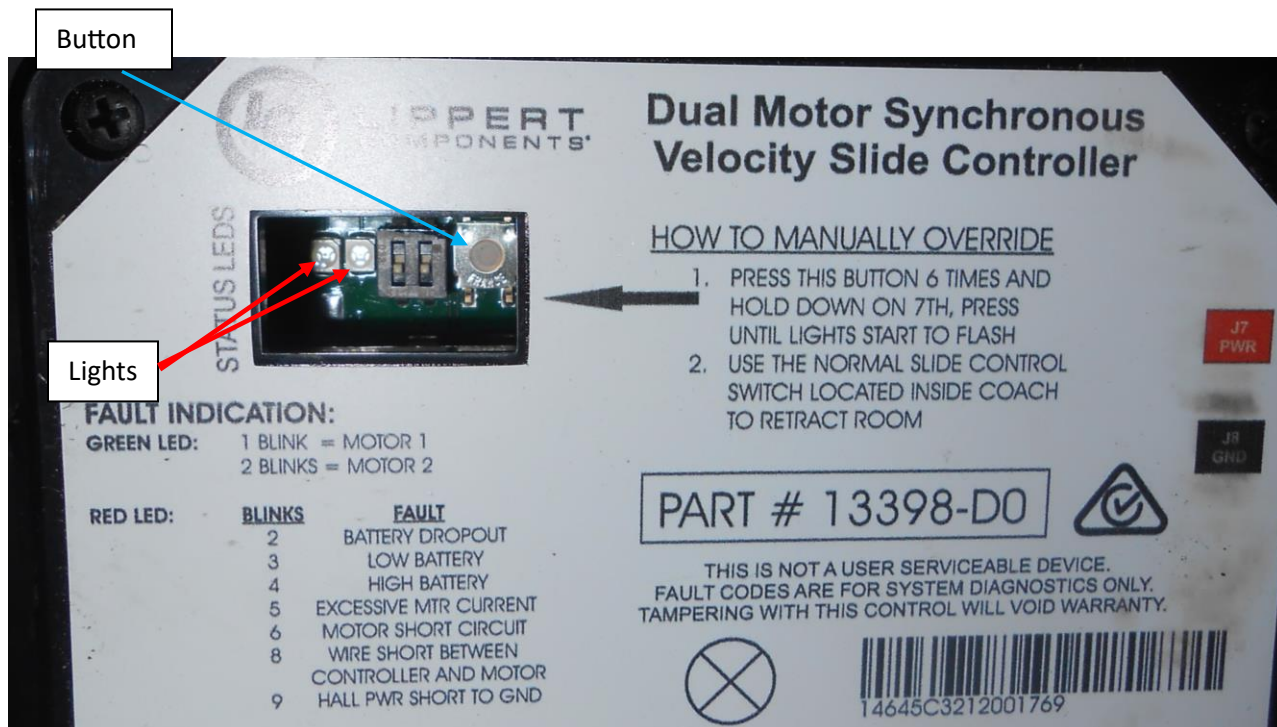
Location of bed slide out controller in storage small compartment at back of coach. Same location as the low point freshwater tank drain.



The location of dinette and couch slide out is under the slide out in the compartment next to the generator.

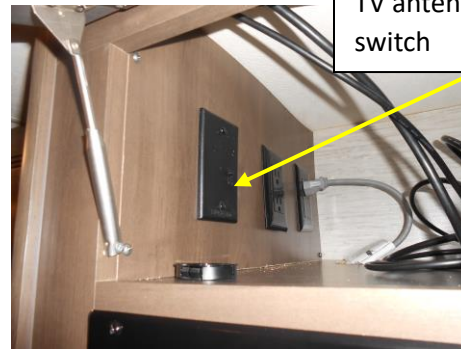


If your slide will not retract follow these steps. Locate the slide controller for the non-working slide. Look at the lights to see if flashing will indicate an error, the color and number of flashes will help determine the error. Error codes are shown on the face of the controller. To force the slide with a pencil or other small object the button is recessed so you will need something with a point. Press the reset button 6 times then press it again and hold it until the lights start to flash. When the lights are flashing use the retract button. The slide should retract. This is only an emergency procedure. Continued use may damage the mechanism. The manual for the controller can be found here [cci-0001573-10.pdf](http://cci-0001573-10.pdf) ([lci-support-doc.s3.amazonaws.com](http://lci-support-doc.s3.amazonaws.com)) page 20. We had one of the two slide motors fail. This procedure allowed us to retract the slide.



## TV Connections

Located in the small cabinet over the microwave. Contains USB cables for front and bedroom tv. Also has an on-off switch for Winegard tv antenna. Red light on switch plate indicates antenna is on. The cabinet has a 110-volt power outlet.



TV antenna on-off switch

## Android Auto

Had a little trouble getting Android Auto to work with the AVM2210H AXXERA radio. You must use the USB below the radio not the one on the radio.



Use this USB port.



If you find one of your wheels looking like this.



You have lost a wheel simulator Lug Nut Cover. These hold the fake metal cover on the wheel. There are usually 2 or three of these holding the cover on. On our front wheel there are three. Lost one on a trip. The ones that hold the cover on can be identified by indentations on the nut. Not an easy part number to find. For ours we ordered a Phoenix PNF22LNT Lug Nut Cover with Jam Nut crimped inside 14mm ID with 1.5mm thread pitch 1 3/8" tall. I also found out what the strange T shaped tool was that was in the Thor manual bag. It is a tool to remove and mount these lug nut covers.

