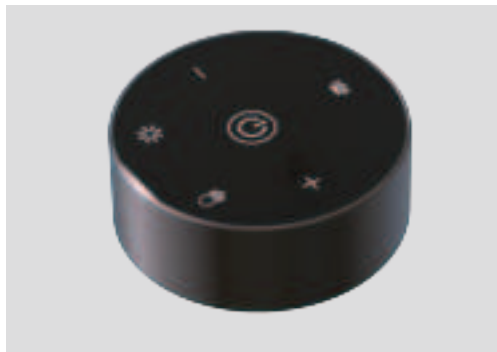


# REMOTE CONTROL USER MANUAL

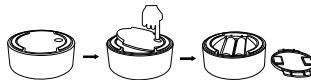


Battery Type: AAA Battery



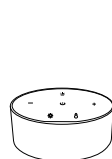
## HOW TO USE THE REMOTE CONTROL

### 1. Installing the battery



- 1) The battery box is at the bottom of the remote control. Turn the bottom of the battery box upward.
- 2) Press the circular depression at the bottom with your fingers, and the battery cover will pop up.
- 3) Insert AAA battery into the case, aligning the negative and positive poles of the batteries with the negative and positive symbols on the case.

### 2. Adjust the lighting and color temperature



- ON/OFF and Timer  
turn on/off the screen lamp (Press the switch for 3 seconds. The light will flash once, to start the timer for 2 hours)
- Adjust the color temperature  
Short click "⬠", switch to CCT adjustment, please short press "+" to adjust color temperature (3000K-4000K-5000K-6500K) long touch can change color temperature stepless
- Adjust the brightness  
short click "★", switch to DIM adjustment, please short press "+" to adjust brightness levels (5%-15%-40%-70%-100%) long touch can change light brightness stepless

### 3. Light sensor switch



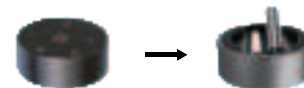
- Light sensor switch  
Touch once time, The blue indicator lights up, photosensitive function is working

- 1) If you want to stop this function, there are 2 methods:  
Environment turns bright, the lamp turns dark gradually  
Environment turns dark, the lamp turns bright gradually
- 2) If you want to stop this function, there are 2 methods: Touch the function button  
Touch the "+" dimmable button

### 4. Code Setting

The factory setting is that lamp is already paired with the remote control. If the remote failed to adjust the lamp or change a new remote, please follow the below two methods to match again.

1. Please install the battery within 5 seconds after turning light on.



2. Simultaneously Hold down the "+" keys within 5 seconds of turning on the light. If the light blinks, the code matching succeeds.



Remark: While the lamp is already matched with remote control, when paired again the lamp light won't flash.

## FCC Warning

This device complies with part 15 of the FCC Rules. Operation is subject to the following two conditions: (1) This device may not cause harmful interference, and (2) this device must accept any interference received, including interference that may cause undesired operation.

Note: This equipment has been tested and found to comply with the limits for a Class B digital device, pursuant to part 15 of the FCC Rules. These limits are designed to provide reasonable protection against harmful interference in a residential installation. This equipment generates, uses and can radiate radio frequency energy and, if not installed and used in accordance with the instructions, may cause harmful interference to radio communications. However, there is no guarantee that interference will not occur in a particular installation. If this equipment does cause harmful interference to radio or television reception, which can be determined by turning the equipment off and on, the user is encouraged to try to correct the interference by one or more of the following measures:

- Reorient or relocate the receiving antenna.
- Increase the separation between the equipment and receiver.
- Connect the equipment into an outlet on a circuit different from that to which the receiver is connected.
- Consult the dealer or an experienced radio/TV technician for help.

Note: The Grantee is not responsible for any changes or modifications not expressly approved by the party responsible for compliance. Such modifications could void the user's authority to operate the equipment.

The device has been evaluated to meet general RF exposure requirement.