

If you have any after-sales questions, please provide this series number and model number at the time of inquiry.

### Customer Service

Check that all parts are available before beginning assembly. Do not attempt to assemble the product if any parts are missing or broken. If you encounter any problems before and during the installation, please feel free to contact us.

**Technical Support:**  
support@yaobo-global.com

**Business Cooperation:**  
business@yaobo-global.com



WhatsApp



Installation Video



## 525 SERIES CEILING FAN



### USE AND CARE GUIDE

READ INSTRUCTIONS CAREFULLY FOR SAFE INSTALLATION  
AND FAN OPERATION

525 SERIES  
**CEILING FAN**

## THANK YOU FOR PURCHASING

We appreciate your purchase of this high-quality product. To guarantee proper operation and safety, it is important that you carefully read and adhere to all instructions before assembling, installing, and using this ceiling fan.

## SAFETY NOTICES

A notice that says "WARNING/CAUTION" indicates a potential danger. It is meant to draw your attention to the installation, operation, maintenance, or other procedures that, if not properly carried out, could cause harm to the appliance, yourself, or others, possibly even resulting in death. Therefore, do not proceed beyond a WARNING/CAUTION notice until you fully comprehend and fulfill the specified conditions.

## SAFETY PRECAUTIONS

Before and during all stages of handling, installing, removing, operating, and maintaining this product, it is essential to carefully follow the general safety measures outlined below. Not adhering to these precautions disregards the safety standards for the product's design, production, and intended use, and could result in harm or injury. Please note that we cannot be held responsible for any consequences resulting from the customer's failure to comply with these requirements.

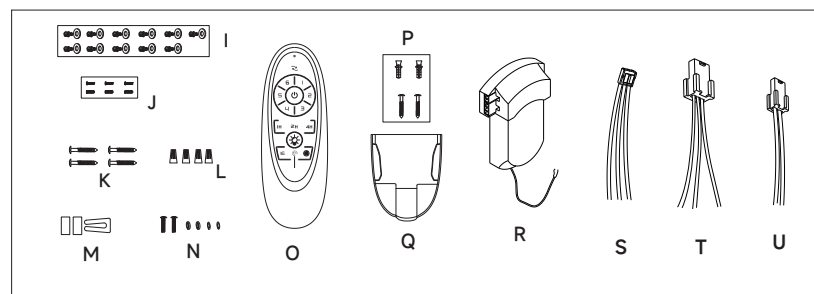
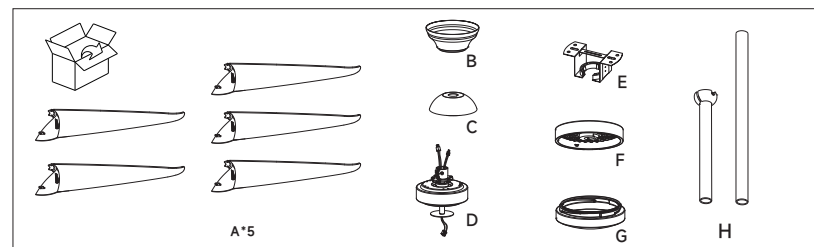


## SAFETY WARNING

1. Before installing your new ceiling fan, carefully review the assembly diagrams provided, and read all instructions and safety information.
2. Ensure that a licensed and qualified electrician installs this fan.
3. This appliance is not suitable for use by individuals (including children) with reduced physical, sensory, or mental capabilities or lack of experience or knowledge, unless they are supervised or have been given instructions by a person responsible for their safety.
4. Supervise young children to prevent them from playing with the appliance.
5. All electrical work must be performed only after disconnecting the power supply by removing fuses or switching off the circuit breaker to ensure complete electrical isolation.
6. For outdoor use, install the ceiling fan under covered or enclosed patios, screened porches, and other areas that are not directly exposed to rain, snow, water, or moisture.
7. This manual is not intended for untrained or unqualified individuals to install the ceiling fan.
8. During installation and operation, it is the responsibility of the qualified and licensed installer and user to exercise common sense and care.
9. The fan, light kit, and mounting plate must be grounded.
10. The use of an unapproved remote control will invalidate the warranty. Only use the provided remote control.
11. Always turn off the main power supply at the main power box before starting any work, and make sure to remove the fuse or turn off the circuit breaker before installing the fan or replacing the LED light.
12. Do not use solid-state controllers with the ceiling fan.

## PARTS LIST

Upon opening the original carton, ensure that all items are present and in good condition. If any items are missing or damaged, please contact customer service. Do not dispose of the carton or other packaging materials, as they may be required for warranty replacement or repair purposes.



- |   |                                 |   |                                       |
|---|---------------------------------|---|---------------------------------------|
| A | Blade x 5                       | L | Wire Connector x 4                    |
| B | Canopy x 1                      | M | Balance Kit x 1                       |
| C | Coupling Cover x 1              | N | 8# Screw & Set x 1                    |
| D | Motor Assembly x 1              | O | Remote x 1                            |
| E | Mounting Bracket x 1            | P | Holder Screw & Plug x 2               |
| F | Light Kit x 1                   | Q | Remote Holder x 1                     |
| G | Lampshade x 1                   | R | Receiver x 1                          |
| H | Downrod x 2                     | S | Supply Wire Terminal x 1              |
| I | Blade Upper Mounting Screw x 11 | T | Alternate Wire Terminal for Motor x 1 |
| J | Blade Inner Mounting Screw x 6  | U | Alternate Wire Terminal for Light x 1 |
| K | Wood Screw x 4                  |   |                                       |

## FAN INSTALLATION INSTRUCTIONS

**WARNING**   
Risk of electric shock

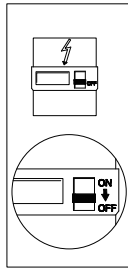
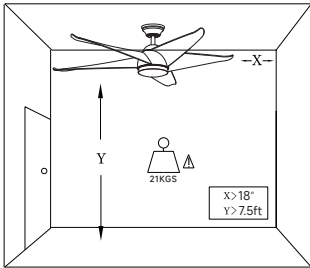
### WARNING

Installing or using electrical accessories that are not provided with this product is prohibited to prevent fire and electric shock hazards. To prevent personal injury, always disconnect the power supply before installing, disassembling, maintaining, or cleaning the product. If the ceiling fan displays abnormal oscillating movement, cease use immediately and contact the manufacturer, its service agent, or a qualified professional.

### 1. INSTALL THE MOUNTING BRACKET

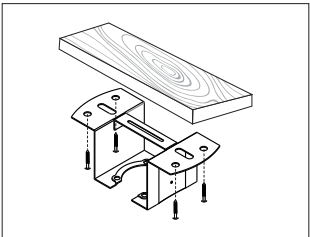
The distance from the floor to the lowest point on the fan blade should be no less than 2.3m (7.5ft).

Ensure that the ceiling joists are sufficiently strong and sized to support the weight of the 21kg (45lb) fan.



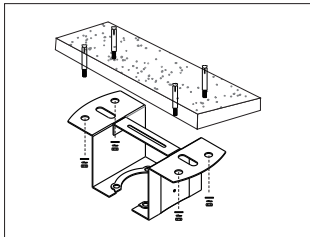
#### WOODEN CEILING

Fasten the mounting bracket to either the ceiling joist or a suitable piece of timber inserted between the ceiling joists. Use four wood screws to attach the mounting bracket.

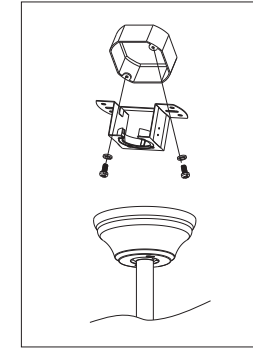
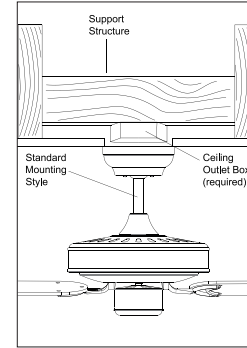


#### CONCRETE CEILING

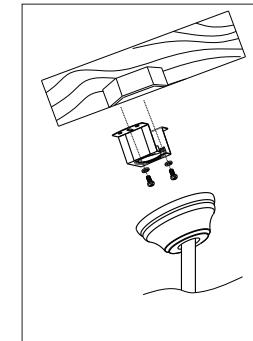
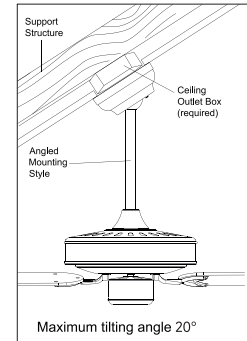
Using a percussion drill with an 8mm bit, create holes in the ceiling of a length appropriate for the expansion screws. Once the holes are created, use the expansion screws to attach the mounting bracket to the ceiling.



To hang the fan from a flat ceiling, the mounting bracket should be attached securely to the electrical box.



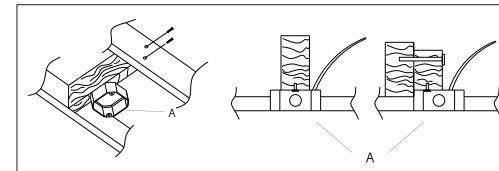
To install the fan on an angled ceiling, position the mounting bracket opening towards the peak and attach it to the electrical box.

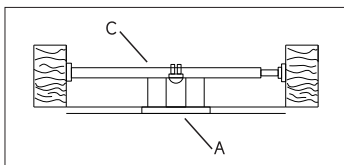


In case there is no outlet box, follow the instructions below: Firstly, disconnect the power supply by removing fuses or turning off circuit breakers. Next, directly secure the outlet box (A) (not provided) to the building structure using appropriate fasteners and materials that can fully support the weight of the moving fan (at least 35 lbs). Avoid using a plastic outlet box. The figures below demonstrate two alternative methods for mounting the outlet box (not included).

#### NOTE

To ensure proper clearance between the blade tip and ceiling, a longer downrod may be necessary when installing the ceiling fan on a sloped ceiling. It is important to install the fan at a location where the blades are at least 50cm (20 inches) away from any nearby objects or walls.

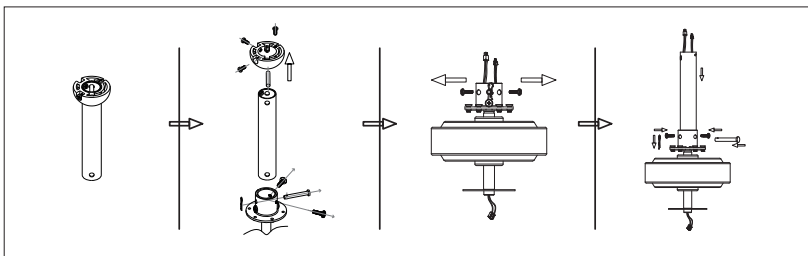




In cases where there is an existing fixture but no ceiling joist, a ceiling fan hanger bar, Saf-T-Bar or Saf-T-Brace (C) may be required to hang the fan.

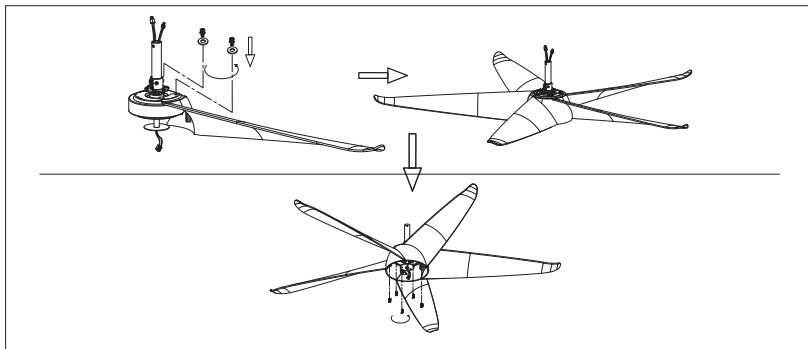
## 2. INSTALL THE DOWNROD

- Select the downrod size that is appropriate for your ceiling height. This fan comes with 10 and 24-inch downrods to choose from.
- Detach the screws and hanger ball from the downrod, along with the locking pin, bolt and screws from the motor coupler.
- Pass the motor wire and light wire through the downrod in the proper direction.
- Install the downrod into the motor coupler, insert the bolt and locking pin, and lock the downrod with the screws.



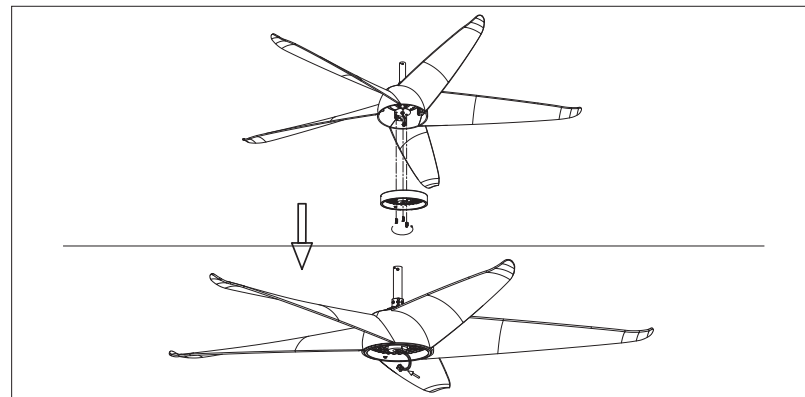
## 3. INSTALL THE FAN BLADES

To install the fan blades, line up the holes on the blades with the holes on the fan motor assembly, and use the screws and washers provided to secure the blades. Ensure that the blades are securely in place and that the screws used to attach the blades are tightened properly.



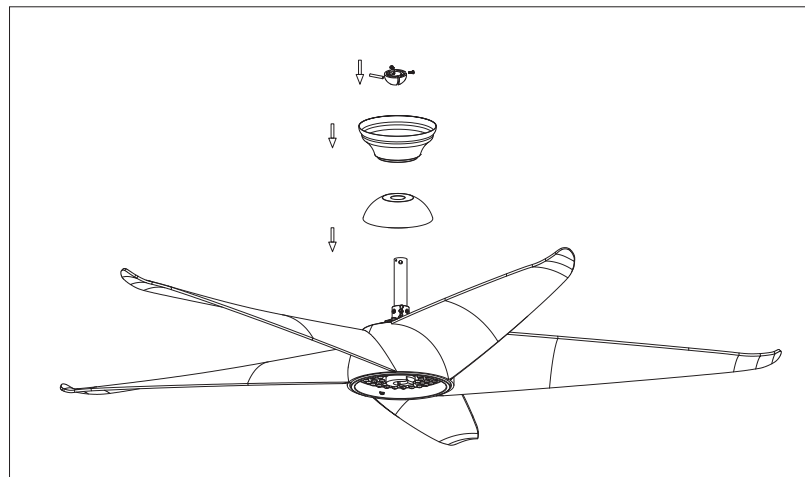
## 4. INSTALL THE LIGHT KIT

Remove the light kit mounting screws from the motor and lock the light kit with them. Connect the light wire on the motor with the light source wire on the light kit.



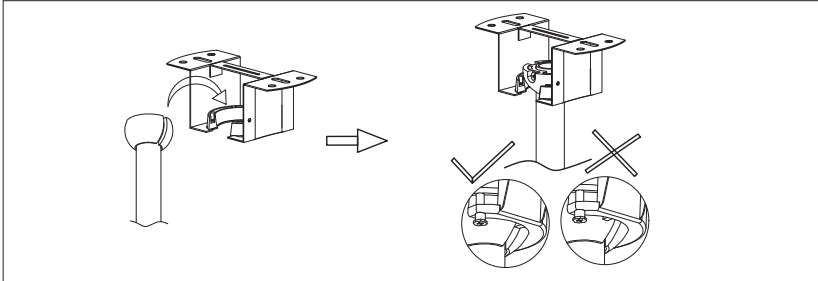
## 5. INSTALL THE COUPLING COVER, CANOPY AND HANGER BALL

- Pass the coupling cover and canopy through the downrod in the right direction.
- Insert the hanger ball and bolt on the downrod. Lock them with screws and cover the coupler with the coupling cover.

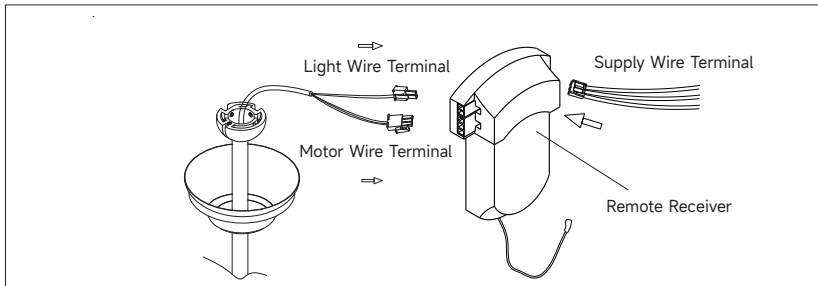


## 6. FAN MOUNTING

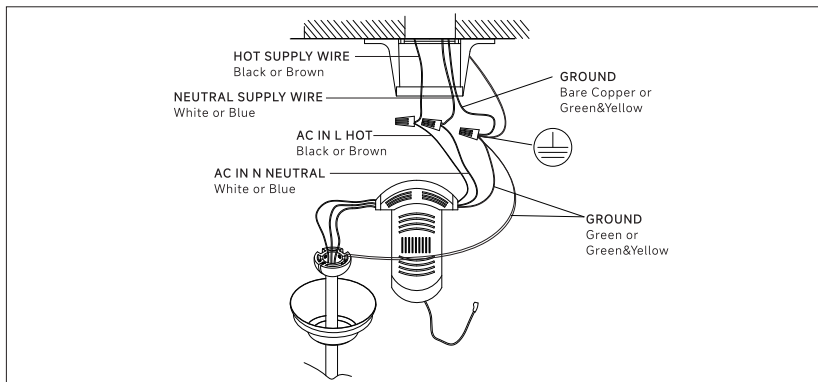
a) Hang the fan motor assembly on the mounting bracket, and ensure the key slot of the hanger ball is positioned on the key pin of the mounting bracket.



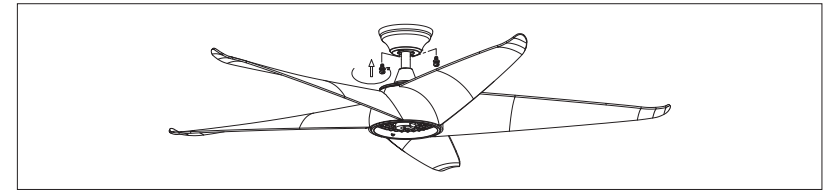
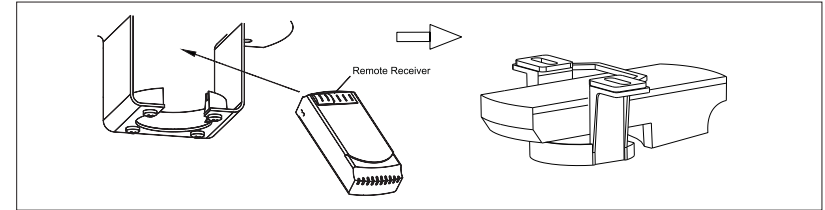
b) Plug the motor wire terminal, light wire terminal and the included supply wire terminal into the corresponding wire terminals of the receiver.



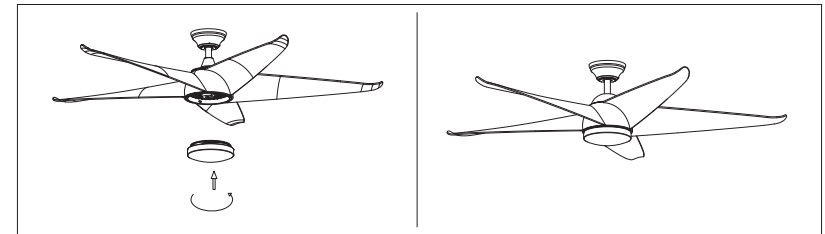
c) Properly connect the wires: Connect the Neutral (White or Blue) supply wire from the outlet box to the Neutral (White or Blue) fan wire; Connect the Hot (Black or Brown) supply wire from the outlet box to the Hot (Black or Brown) fan wire; Connect the Ground wire (Bare Copper or Green&Yellow) from the outlet box to the fan Ground (Green or Green&Yellow) wire, mounting bracket Ground (Green or Green&Yellow) wire, and downrod Ground (Green or Green&Yellow) wire. Use wire connectors to tightly join each wire together and wrap each connector with approved electrical tape to ensure a more secure connection.



d) Slide the remote receiver unit into the mounting bracket as shown in the figure below. Loosen the two screws that secure the top canopy to the bottom of the mounting bracket, but only halfway. Slide the top canopy up the downrod and onto the mounting bracket. Rotate the canopy until the screws lock into place, and then tighten them securely.



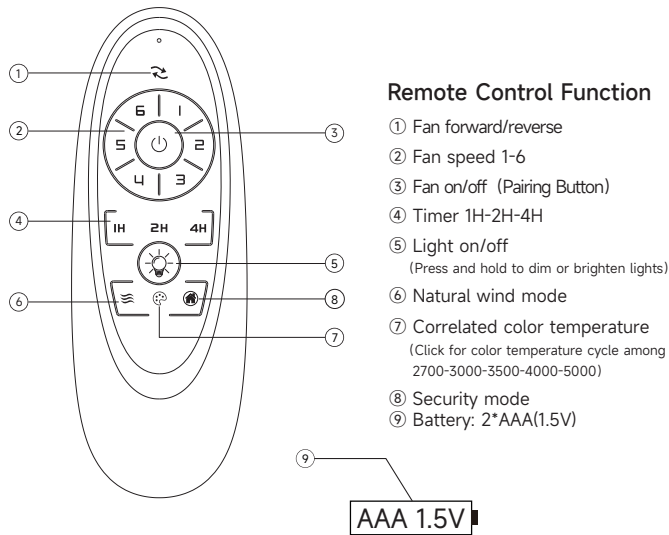
d) Install the lampshade.



## 7. INSTALL THE REMOTE HOLDER

Install the holder to the wall with two wall plugs & two screws provided. Insert the batteries into the remote and hang up the remote by the holder.

## FAN OPERATION INSTRUCTIONS



### Kindly Reminders

1. Your fan's remote and receiver have already been paired before. The learning code matching mode is only necessary if they lose control during or after installation.
2. To use learning code matching mode between the remote and receiver, turn on the power supply within 30 seconds and press the remote's "⏻" button for 5 seconds. After hearing a long beep, the matching is successful, and the fan can work normally. (Note: Matching mode won't work if the power supply is turned on for more than 30 seconds.)
3. If the remote can't control the receiver, check the battery's orientation and whether it's touching properly. Also, check if the battery is full or empty.
4. If the remote can't control the receiver, check if there are other similar remote-controlled products nearby. Products with the same frequency can interfere with each other.
5. A low battery voltage can reduce the remote's sensitivity and signal reception. Replace the battery when its voltage is low (the indicator light will flash when the battery's voltage is low).
6. Remove the battery from the remote when you don't plan to use it for a long time.
7. When installing the fan, don't press the antenna (or other wires) with the fan's ceiling cover, or it could damage the wire and cause a short circuit or loss of control.

## REPAIRING THE FAN'S RECEIVER & REMOTE

If the ceiling fan remote and receiver lose control after installation or during use, it is necessary to repair the pairing between them. Below are the symptoms and methods to repair the pairing:

### Symptoms:

1. The fan only runs at high speed after installation
2. No reverse function after installation
3. Remote cannot communicate with the receiver

### To repair the pairing, follow these steps:

- a) Turn OFF the main power to the ceiling fan for 30 seconds.
- b) Press and hold the Pairing Button on the remote until you hear a double beep ringing within 10 seconds of switching the power ON to the receiver of the ceiling fan. Once the double beep ringing is heard, the pairing is successful.
- c) Turn ON the fan and use the remote to change the speed to ensure that the operation and pairing were successful.

### When installing multiple fans, each fan must be paired separately. Here are the steps to follow:

- a) Turn OFF the main power to both fans for 30 seconds.
- b) Press and hold the Pairing Button on the remote for 5 seconds within 10 seconds of switching the power ON to the receiver of the first fan (e.g. "Fan A"). When the double beep ringing is heard, the pairing is successful.
- c) Turn OFF the main power to the first fan that was paired (e.g. "Fan A").
- d) Press and hold the Pairing Button on another remote for 5 seconds within 10 seconds of switching the power ON to the receiver of the second fan (e.g. "Fan B"). When the double beep ringing is heard, the pairing is successful.

**If you have multiple fans such as "Fan A" and "Fan B" and want to control both with a single remote, ensure that they are located within 10 meters/32 feet of each other in the same room with no obstruction between them. Follow the steps below to pair the remote with both fans:**

- a) Turn OFF the main power to both "Fan A" and "Fan B" for 30 seconds.
- b) Press and hold the Pairing Button on the remote for 5 seconds within 10 seconds of switching the power ON to the receiver of both "Fan A" and "Fan B". When you hear the double beep ringing, the pairing is successful.

## TROUBLESHOOTING GUIDE

### 1. NON-FUNCTIONING FAN/REMOTE

Confirm that the remote is within a range of 20 feet from the receiver.

- a) Check that the circuit breakers for the mains are turned ON.
- b) Ensure that the isolation wall switch is in the ON position.
- c) Verify that the battery in the remote is in good condition and inserted correctly.
- d) Follow the remote and receiver pairing process as outlined in the section titled "REPAIRING THE FAN'S RECEIVER & REMOTE".
- e) Make sure that the live, neutral, ground, and light wires (if applicable) from the isolation wall switch and remote receiver are connected properly as per the wiring diagram.
- f) Verify that all wire connections at the wall switch, wire connector, and/or terminal block are secured and not loose. If the fan still doesn't function properly, contact customer service.

## 2. FAN SOUNDS NOISY

- a) Tighten the light fitting completely (applicable to the version with a light).
- b) Tighten all screws on the fan blades again (avoid over-tightening).
- c) Tighten all screws in the hanging bracket and cover the plate again.
- d) Wait for a 24-hour break-in period. Some of the noises that occur with the new fan may resolve during this time.

## 3. FAN TURNS BUT DOES NOT MOVE MUCH AIR

- a) The fan may be running in reverse (for fans with the reverse running option).
- b) The room may contain items that obstruct the airflow.

## 4. FAN WOBBLE

- a) Make sure the outlet box is secured firmly to building structure and make sure the mounting bracket is secured to the outlet box, screws are tight.
- b) Check that the screws of hanger ball and motor coupler are tightened firmly with the downrod.
- c) Check and ensure the key slot of the hanger ball is positioned on the key pin of the mounting bracket.
- d) Ensure that all blade are screwed firmly into the blade holder or all blade holders are tightened securely to motor.
- e) If there are any variations in the distance between blades, measure the distance from blade tip to blade tip. Loosen the screws connecting blades and brackets (one at a time), adjust the blade to the correct position, and then tighten the screws again.
- f) If the fan blades are still wobbling, try swapping two adjacent (side-by-side) blades to distribute the weight more evenly and achieve smoother operation.
- g) If blade wobble is still noticeable, use the included blade balancing kit.

## HOW TO USE BALANCING KITS

---

To help you balance the fan, a balancing kit is provided for your convenience.

Here are the steps to follow:

- 1. Ensure that all the blades and blade arm screws are properly tightened.
- 2. Uneven blade levels are often the cause of fan wobbling issues. To check the level, choose a point on the ceiling directly above one of the fan blade tips and measure the distance. Rotate the fan until the next blade is in position and measure the distance again. Repeat for all blades. The difference in distance should not exceed 1/8" (0.32cm).
- 3. If blade wobbling is still noticeable, use the included blade balancing kit.
- 4. If the fan blades are still wobbling, try swapping two adjacent (side-by-side) blades to distribute the weight more evenly and achieve smoother operation.

## IMPORTANT FACTS

---

### WARM NOTE

All electric motors, including fan motors make some noise and may feel hot to touch, this is not a fault. Ceiling fans tend to move during operation as they are not generally rigid-mounted. Movement of a couple of centimeters is quite normal and does not suggest the fan will fall. Rigidly mounted ceiling fans generate excessive vibration and stress on their mountings. Fan lights will rattle if they are not supplied with the fan. And this is not covered by warranty.

### FAN OPERATION

A ceiling fan is an environmentally smart choice when it comes to cooling as well as helping to warm your room. You should see a reduction in both cooling and heating costs by regular use of your fans. Do not hesitate to use your fans in both the summer and winter months.

### WARM NOTE

In summer, the fan should be set to spin in an anti-clockwise direction blowing down the cool breeze. In winter, the fan should be set to spin in a clockwise direction so that an upward airflow will push warm air off the ceiling and circulate it downwards into the living areas. In winter months use the fan at a lower speed than in summer.

### NORMAL WEAR AND TEAR

Threaded components working slightly loose, or blade carriers becoming slightly bent due to vigorous cleaning or bumping can cause extra wobble and noise. This is not covered under warranty, but a little care and maintenance can reduce or prevent this problem.

### NIGHT NOISES

This is the biggest cause of service calls, which are outside the manufacturer's warranty. If a fan has a fault it will be noticeable at all times. Naturally, when everything is quiet at night you will be more inclined to hear small noises, which may not be noticeable at other times. Even slight signals superimposed in your electricity supply for off-peak hot water control may cause a change in the fan motor noise. This is normal.