

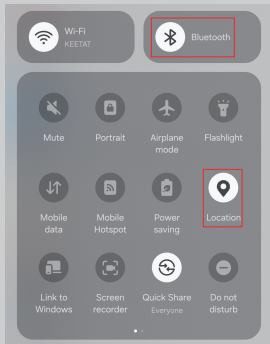
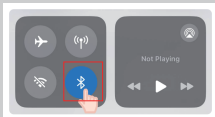
# APP Printing Quick Start Guide

Scan the QR code below to download the newest  
"APP Printing Quick Start Guide", as the APP UI may update.





① Scan or search "Jadens Printer" to download the APP.



② Turn on Bluetooth and Location (for Android) on Settings Menu.



Allow **Jadens Printer** to access  
this device's location?



Precise



Approximate

While using the app

Only this time

Don't allow



Allow **Jadens Printer** to find,  
connect to, and determine  
the relative position of nearby  
devices?

Allow

Don't allow

Jadens Printer wants to turn on Bluetooth

Deny

Allow

- ③ Open "Jadens Printer" and allow it to access Location, Nearby Device, and Bluetooth.



## Jadens Printer

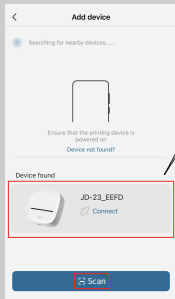


No device temporarily

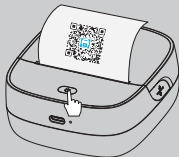
Let's go get connected

+ Add a device

- 4 Turn on your printer, open the APP, and tap "+" to add a printer.

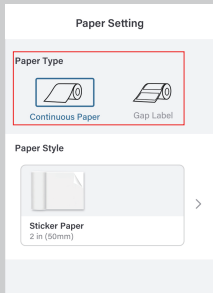


Option 1: Printer will pop up automatically. Then tap "Connect".

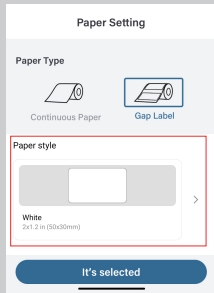


Option 2: Press the printer power button twice to print QR Code, then click "Scan" to scan it and connect the printer.

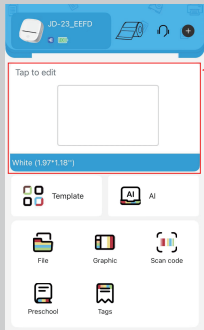
⑤ Connect the printer.



- ⑥ Choose label type you want to print. Support Continuous paper and Gap label.



- ⑦ Choose accurate paper style and click "It's selected".



Tap here to DIY your own label

**AI:** Provide AI functions, such as AI painting, cartoon avatar, and watermark remove.

**DIY:** Create personalized content with text, icons, pics and barcodes as you want.

**Template:** Create with provided template.

**File:** Print files from your phone; different label types support different files format.

**Preschool:** Various education templates help educate children more easily.

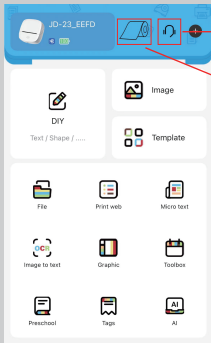
**Tags:** Provide name tag templates to edit and print.

**Graphic:** Multiple graphics categories helps to rich labels content.

**Scan code:** Generate barcode/QR code from camera scanning to print.

Gap Label APP Page

## ⑧ Choose printing functions.



Continuous Paper APP Page

Manual Customer Online Service  
Available Time:

Mon -Fri: EST 10AM- 10PM

Sat -Sun: EST 1PM- 9PM

Tap here to change label type  
( ⚠ Paper type in [Jadens Printer]  
should be consistent with that of  
the printer.)

Functions for continuous sticker/paper only:

**Image to Text (OCR):** Extract text to print from image or save extracted text as PDF.

**Toolbox:** Include ruler, banner, scan code and scan image printings.

**Micro Text:** Print small margin of text in one page.

**Print Web:** Print the website page you need.

< Paper setting ✓

Name

Custom height ☒


Print area

Height:

Width:  
Max: 2.0"

- 9 Set continuous paper size and tap "✓" to DIY.  
(For gap label, please skip this step.)

< Editing ☆ Next



Text

Barcode

QR code

Canvas

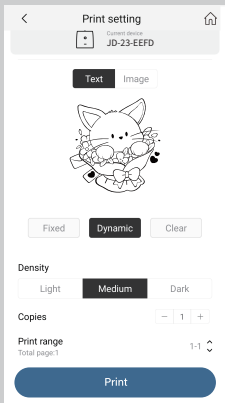
Figure

Material

Image

Time

- 10 Editing label content with Text, Image, Barcode, QR Code, Figure, etc.

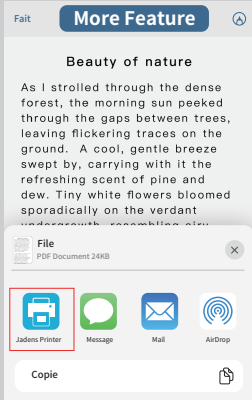


- ⑪ When print from File/Image:  
Try different modes to  
preview to achieve the best  
printing effect.

## Tips:

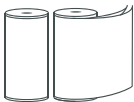
If you have just received documents (pdf. file) from Twitter, Facebook or Instagram, you can open and print it right away!

After receiving it in the dialogue box, tap the file to open it, and then "Open in Another App" to choose "Jadens Printer" APP.





## Paper Type:



- ① 2.12 " Width Continuous Paper / Sticker

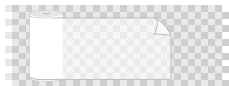


2 " x 2 "



2 " x 1.18 "

- ② 2 " Width Gap Label



- ③ 2.12 " Width Continuous Transparent Sticker



[www.jadens.com](http://www.jadens.com)

Scan and find us for high quality thermal papers