

# Tymate

## Tire pressure monitor system

Model: TM7

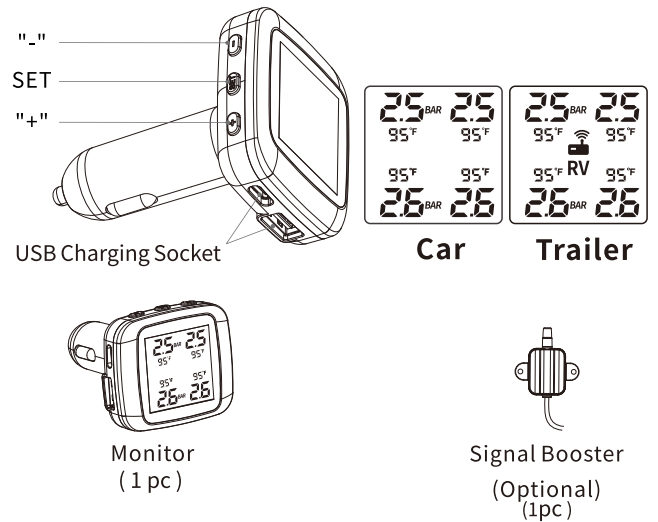
**Caution:** Plug the display into the cigarette lighter to power on, and then install the sensor.



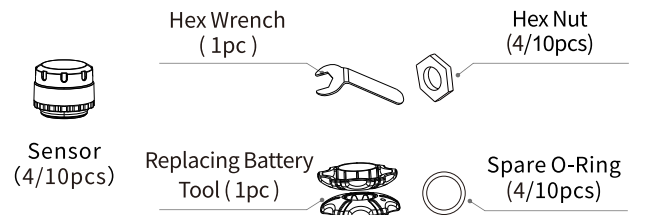
Implementation Standard:GB26149-2017

### 1.Kit Contents

#### 1-1.The monitor and accessories



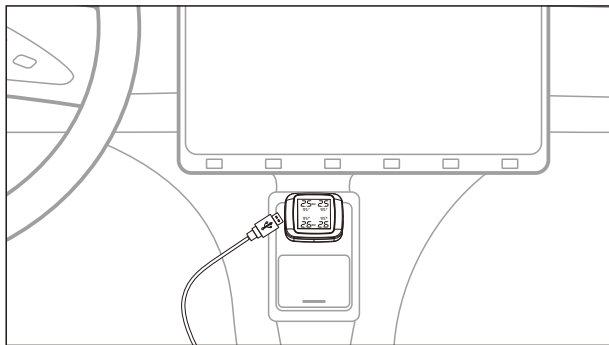
#### 1-2.The sensor and ACC



01

### 2.Monitor Installation

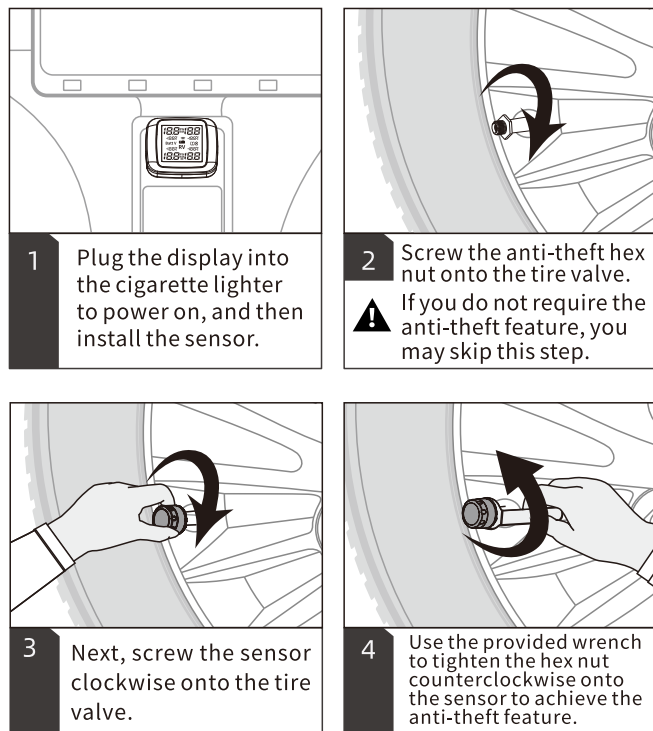
It is easy installation that monitor is using cigarette lighter adaptor(CLA) power and avoids any obstacle to driver's view. Please plug in the CLA firmly to begin the normal mode operation and upon power up through CLA.



02

### 3.Sensor Installation

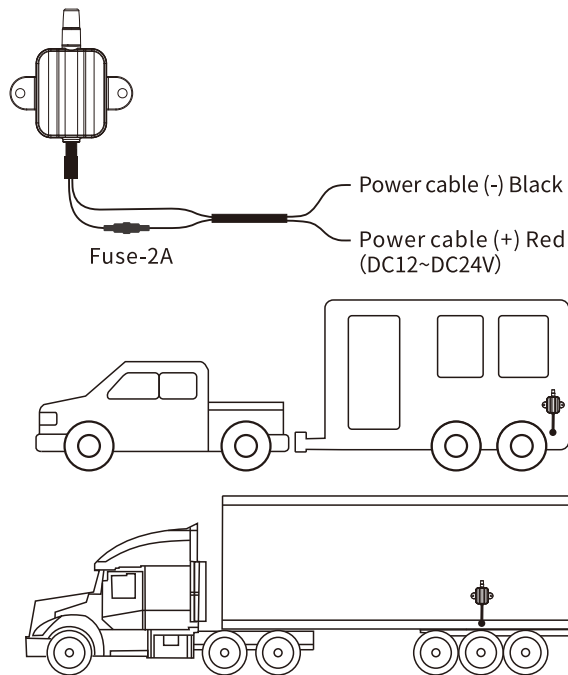
※**Note:** Before installing the sensor, make sure that the tire pressure of the tire is the required tire pressure or the standard tire pressure.



03

### 4.Signal Booster Installation (Optional)

To install the signal booster, position it in the middle of the rear axle of the trailer or RV. Ensure that the antenna is exposed without any cover. Once the booster is in the correct position, connect it to the power supply and firmly install it. The installation process is complete at this point.



04

### 5.Products

Factory default setting	
<b>Reference pressure</b> When the sensor is installed on the tire, the current pressure will become the reference pressure	
<b>Pressure Unit</b>	PSI
<b>Temperature Unit</b>	°F
<b>High temperature alert</b>	158°F

**Adjust Display Brightness:** Short press the "SET" button to adjust the brightness of the screen display.

#### Reference pressure set automatically

When the sensor is installed, the current tire pressure will become the reference pressure.

When the tire pressure is 25% higher than its reference pressure, monitor will have a High Pressure Alert, and when it is 15% lower than the reference pressure, the monitor will have Low Pressure Alert.

#### Change unit

In standby mode, press and hold the "+" button for 3 seconds to switch between °F/°C pressure units.

In standby mode, press and hold the "-" button for 3 seconds to switch between PSI/BAR temperature units.

#### Switch display to view front vehicle /spare tire

(Note:This function is only available when the spare tire sensor is installed.)

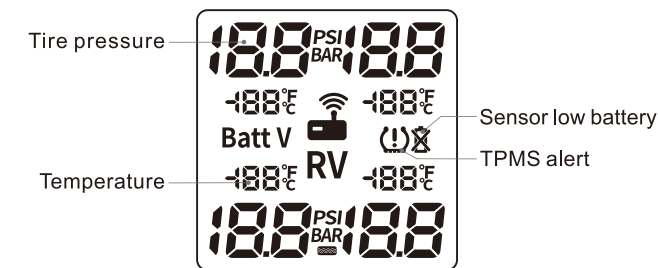
Press the "+" or "-" buttons in standby mode.

#### Turn on/turn off the signal booster

Long press the "SET" button for 3 seconds to turn on/off the signal booster. If the signal booster signal is not received within 5 minutes after the monitor is turned on, the signal booster icon will flash. When the signal booster is turned off, the icon will not flash.

05

### 6. Alert status



Alert	Alert status
High Pressure Alert	(!) +25% PSI
Low Pressure Alert	(!) -15% PSI
High Temperature Alert	(!) 158 °F
Fast Leakage Alert	(!) 35 32 ↓
Sensor Low Battery Alert	⌘
Sensor Lost Signal Alert	- - - -

06

### 7. Common After Sales Questions

#### 1) The display cannot be turned on?

The cigarette lighter receiver may be poor contact with the cigarette lighter, try to plug in tighter.

#### 2) A tire is not displayed during use?

The display should not be close to other electronic products (such as mobile phones, dash cam, large-screen navigation, etc.). After moving the display to a new position, drive the car or RV for 5 minutes.

#### 3) Doubt the tire pressure of the sensor is inaccurate?

If you doubt the tire pressure of the sensor is inaccurate, you can inflate or deflate the tire to check if there is any change in the tire pressure displayed on the monitor. If the tire pressure changes, it means that the sensor is working normally. You can also try swapping the sensor with another tire to check whether the tire pressure is similar to the previous sensor reading. If the tire pressure deviation is small, it means that the original sensor pressure is accurate. If the deviation is large, it means that the original sensor pressure is inaccurate.

#### 4) Sensor does not work after using it for a period of time?

It may be due to a low battery. Replace the battery with a new CR2032 battery.

#### 5) Pressure increase during driving?

An increase in tire pressure during driving is normal. When the car is driven for a while, the temperature of the tire rises, causing the pressure to increase.

#### 6) The brightness of the display is dim when the car is exposed to the sun for a period?

If the display brightness is dim when the car is exposed to the sun for a period, it may be due to the high temperature inside the car. When the temperature inside the display reaches 185°F or higher, the brightness of the display will become dim. After driving for a while and the temperature inside the car drops, the display brightness will return to normal.

07

### Common After Sales Questions

#### 7) Same tire pressure, some sensors alert and some do not?

The reference tire pressure is automatically calibrated when the sensor is installed. There may be a difference in tire pressure when the sensors are installed on different tires, so the reference pressure may not be the same for all tires, resulting in some sensors alerting and some not.

#### 8) The tire pressure is too high, after the tire is deflated to the required pressure, how to deal with the tire pressure alert on the monitor?

After deflating the tire to the required pressure, reinstall the sensor on the tire. The sensor will automatically calibrate the current pressure as the reference pressure, and the alert will stop.

#### 9) How to hide the tractor or trailer on the display when it is disconnected?

If the tractor or trailer is disconnected and the display does not receive sensor data for more than 8 minutes, the tractor or trailer will be automatically hidden on the display, and the corresponding tire pressure will not be displayed.

#### 10) All tire pressure of the trailer disappear on the display?

When the trailer is disconnected and the display does not receive signals from the trailer sensors for more than 8 minutes, the trailer and corresponding tire pressures will be automatically hidden on the display. When the trailer is connected again, the display will receive the signals from the trailer sensors, and the trailer pressure will be displayed automatically.

#### 11) Repeater icon flashing?

If the display does not receive the repeater signal, the repeater icon will flash.

08



Sensor ID learning

Please scan the QR code to watch the video operation for sensor installation and sensor battery replacement operation.



Sensor installation



Sensor battery replacement operation



User manual



Use camera or QR scanner to scan

VIP Extended Warranty  
24h Online Service

https://tymate afterservicevip

+ 1(855)-492-9277

Mon-Fri: 9:00AM - 5:00PM (EST)

Support Mail:  
tymate@afterservicevip

www.tymate-tech.com