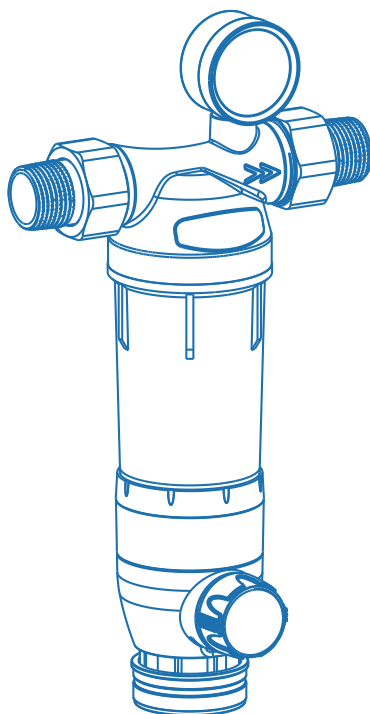


USER MANUAL



AIRTHEREAL

SPIN DOWN SEDIMENT WATER FILTER AFF01



Please read this user manual in its entirety before use and keep it for future reference.

CONTENTS

SAFETY INSTRUCTIONS 02

SPECIFICATIONS 02

COMPONENTS 03

INSTALLATION 03

OPERATION 06

TROUBLESHOOTING 07

LIMITED WARRANTY 08

SAFETY INSTRUCTIONS

IMPORTANT SAFEGUARDS: To avoid the risk of serious injury when using your Spin Down Sediment Water Filter, basic safety precautions must be followed, including but not limited to the following.

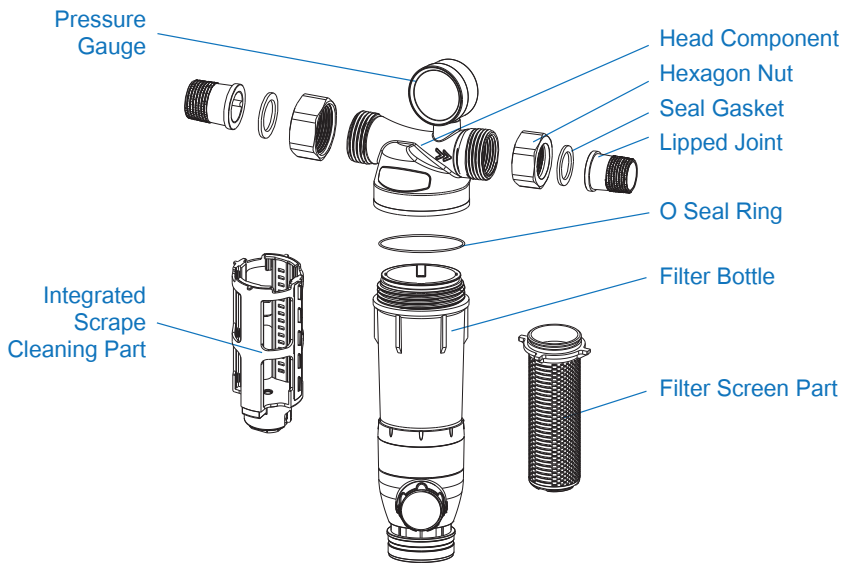
- Please check whether the product is damaged after unpacking and whether the accessories are complete.
- Installation should be performed by a trained professional.
- The installation location requires a reliable drainage system.
- Pay attention to whether the water flow direction marked on the filter body and the pipeline flow direction are consistent.
- This product is only suitable for 41-104°F municipal tap water. please do not use on wastewater or corrosive liquid.
- This product can only be installed in a dry environment indoors and should avoid operating near a heat source.
- Avoid damage to the machine, such as collision, freezing, overheating, chemical contact, etc.
- Do not place the product in direct sunlight.
- When cleaning the internal filter, do not use corrosive cleaners to prevent damage to the filter.
- Please do not modify the product yourself as it may causewater leakage and/or damage to the machine.
- If you are traveling for a long time or stop using it for a long time, please turn off the water supply. The next time you start using it, you must rinse it before normal use.

SPECIFICATIONS

Product Name	Spin Down Sediment Water Filter
Filter Mesh	40μm
Water Pressure	145PSI
Max Water Flow	20GPM
Applicable Water Quality	Municipal tap water
Ambient Temp.	41-104°F
Connector Size	1" or 3/4"

COMPONENTS

Product

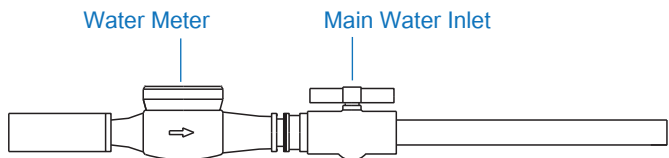


INSTALLATION

Note: Please be advised that it is essential to have professional personnel install your water purification equipment. Incorrect installation may result in product leakage, which can potentially cause damage to your property.

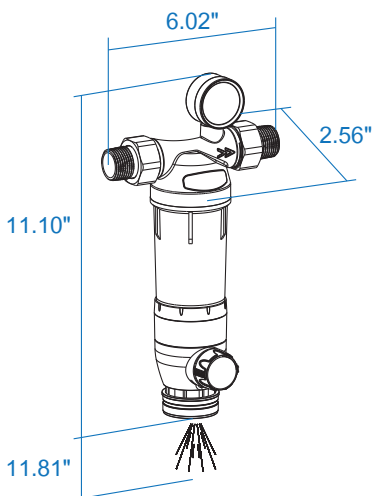
Step1:

Close the valve of the home's main water inlet and drain any excess tap water in the pipe.



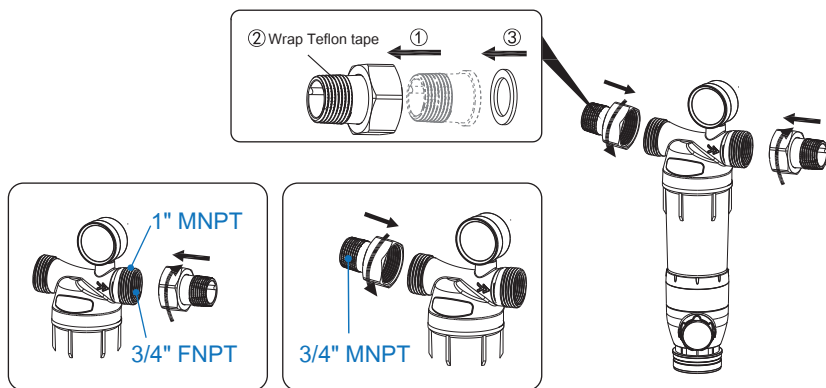
Step 2:

According to the size of the Spin Down Sediment Water Filter, cut off the corresponding length of the pipe at the installation position of the pipeline.



Step 3:

Choose the appropriate connection method. You can connect via PPR pipes or copper pipes, but must use the appropriate joint size. When connecting, the joints need to be fully and evenly wrapped with teflon sealing tape to prevent leaks. Please pay attention to whether the water flow direction marked on the valve body is consistent with that in the water pipe.

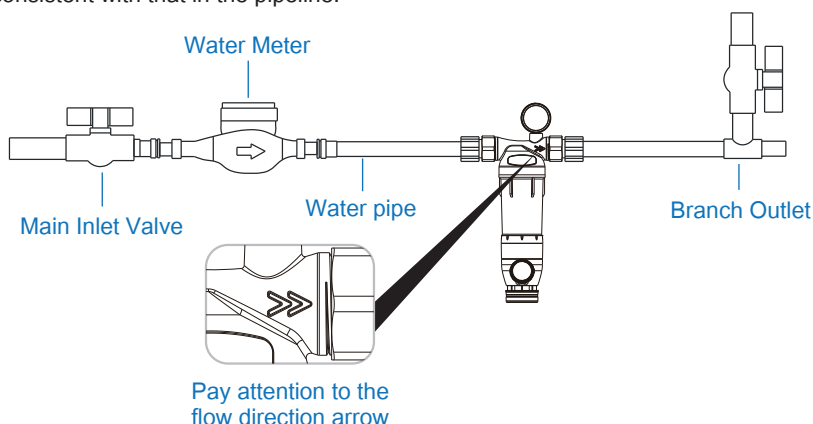


Note:

- PPR pipes require dedicated equipment, which must be sealed securely.
- When installing metal pipes, add connectors based on actual conditions.
- This filter is not suitable for outside installation and must be kept away from direct sunlight, heating sources, and fuel or various chemicals.
- When using a wrench to tighten the hexagon nut, ensure that other parts don't rotate with it.
- After installation, carefully observe whether there is any leakage at the joints.

Step 4:

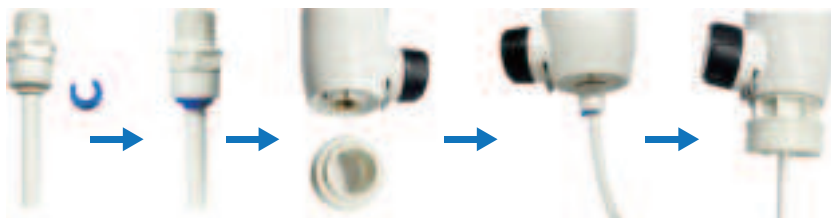
Please pay attention to whether the water flow direction marked on the valve body is consistent with that in the pipeline.



Step 5:

Install drain pipe.

- Unplug the blue buckle, then insert the drain pipe to the filter. Lock it in place with the blue buckle.
- Unscrew the bottom fittings of the machine, wrapping the threads of the locking parts evenly with sealing tape, then re-tighten them.
- Reattach the bottom part of the machine to hand-tight.



Note:

- When installing this product, the drainage outlet should face vertically downward, and the drain pipe must be fixed to prevent leakage.
- Please do not bend the drain pipe which may cause water leakage.
- Be careful not to pull the buckle here arbitrarily, it needs to be tightened, otherwise the drain button will not be able to be turned.

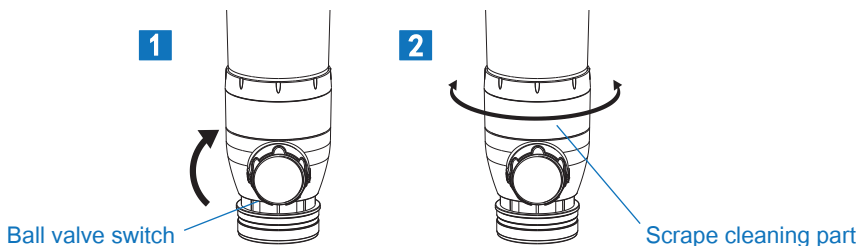
Check for leaks

- Slowly open the main water inlet and check whether the household equipment (faucets, showers, etc) can discharge water normally.
- Pay attention to whether there is water leakage in the connection of the pre-filter area. At the same time, unscrew the drain knob several times to remove the air in the machine and check whether there is water leakage.



OPERATION

Integrated Scrape Cleaning And Screen Washing Part

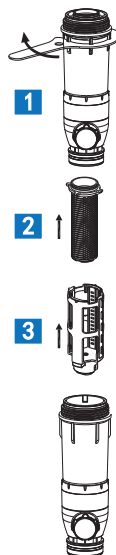


- After installation, open the main water inlet valve and conduct a flushing.
- Before flushing, please ensure a reliable drainage system. You can also use a suitable container to hold the water.
- The user only needs to turn the knob of the ball valve switch counterclockwise 90° and then turn the scrape cleaning part at the bottom of the filter clockwise or counterclockwise 3 to 4 turns to achieve the internal cleaning of the filter.
- Depending on the water quality, flush at least once a month. Open and close the drain ball valve three times, and flush for 30 seconds each time.
- Once the filter has been used for 8-12 months continuously, the filter screen must be cleaned (it is recommended to be cleaned by professional maintenance personnel).
- In the normal cleaning and maintenance process, it is necessary to protect all parts in good condition (original accessories must be used for maintenance).

Remove and wash the screen assembly

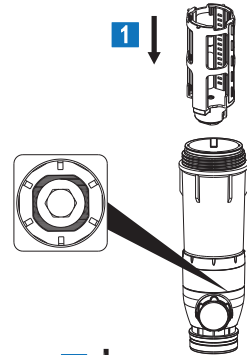
If the impurities on the filter can't be removed by normal scraping or flushing and the water consumption is affected, it is recommended to remove and wash the filter assembly. (It is recommended that professional personnel disassemble and wash.)

1. Open the filter bottle counterclockwise with the wrench included in the package
2. Remove the filter assembly and clean the impurities embedded on the screen
3. There is no need to remove the scraping assembly when cleaning only the screen assembly

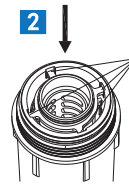


Install the scraping assembly and screen assembly

1. Install the scraping assembly, taking care that when loading the scraping assembly into the filter bottle, the rounded quadrilateral hole on the assembly is against the quadrilateral column on the bottom of the filter bottle, and install it to the end.



2. Install the filter assembly, taking care that when loading the screen assembly the four raised points on the screen assembly need to against the four grooves of the filter bottle, and install to the end.



TROUBLESHOOTING

Problems	Possible reason	Solution
No water	The main inlet valve is closed	Open the main inlet valve
Low water flow	If the main inlet valve is not fully open	Open the main inlet valve completely
	The surface of the screen is partially clogged	Rinse the screen and remove the debris
Water seepage at the joint	Filter parts disassembled by themselves	Check whether the sealing ring is out of position or falling off
	Parts loose	Re-tighten the nipple with wrench
	Too little Teflon tape at the threaded joints	Remove the Teflon tape and re-tighten joints
	The rubber sealing ring is aged or damaged	Replace the rubber sealing ring

LIMITED WARRANTY

We provide a 1-year warranty. For more information please visit:

www.airthereal.com/warranty

- **What's covered?**

Defects due to faulty materials and/or workmanship of the product.

- **What's not covered?**

1. Damage caused by the owner when attempting to fix or alter the product by himself or herself.
2. Damage caused by misuse, abuse, neglect, alterations, or unauthorized repair.
3. Natural depreciation.

- **Warranty Period**

Warranty becomes effective from the date of original purchase and will last for **1 year**.

- **Who's covered?**

This limited warranty is only effective for the original purchaser. It is non-transferable.

- **How to request warranty services?**

To obtain the benefit of this warranty, please email **support@airthereal.com**.
Our customer service team will address your issue as soon as possible!

Always here to help you
www.airthereal.com



WARNING Cancer and Reproductive Harm
www.p65warnings.ca.gov

Produced for: West Ryder Technology LLC
2330 Paseo Del Prado STE C304
Las Vegas, NV 89102

Made in China

V 202401