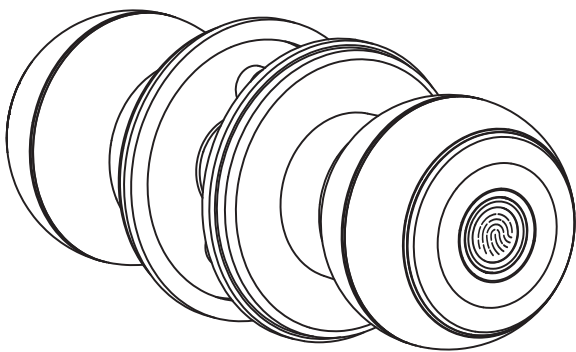


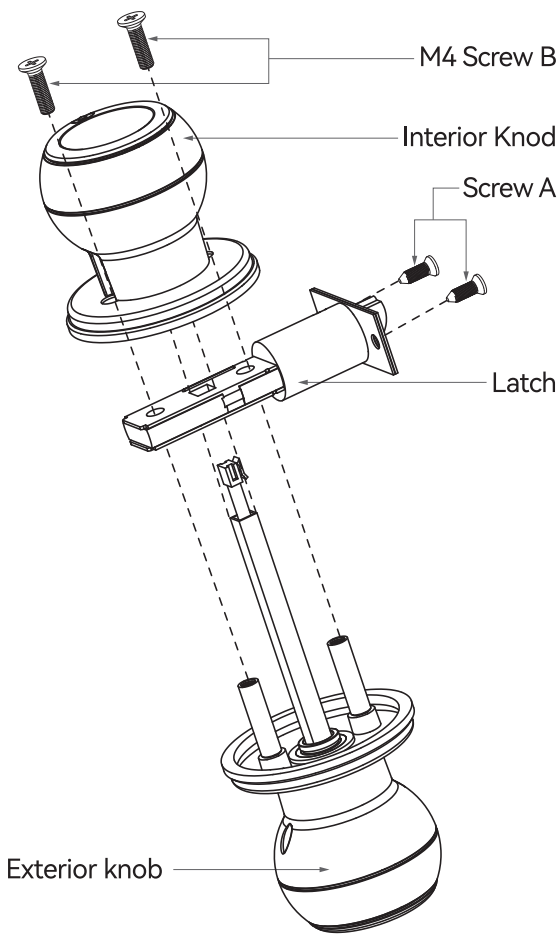
Knob Lock with Fingerprint Installation & Operation Guide



TD-X2-B

English

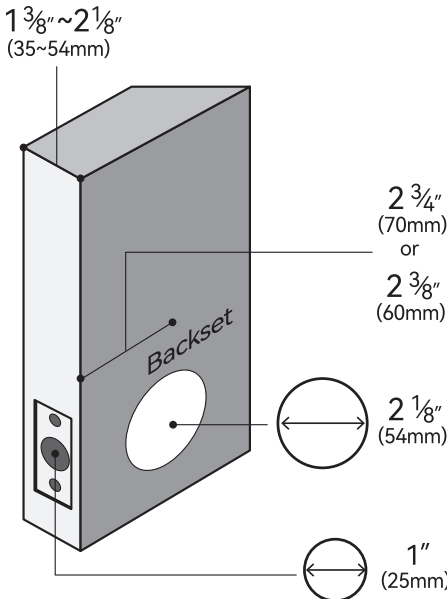
Installation Guide



①

1. Check The Door's Dimension

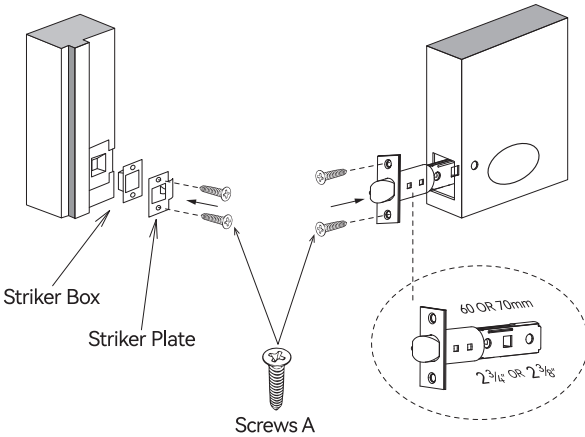
- ① Measure to confirm the thickness of the door is between 1-3/8" and 2-1/8"(35~54mm).
- ② Measure to confirm the diameter of the hole in the door is 2-1/8"(54mm).
- ③ Measure to confirm the backset (as shown below) is either 2-3/8"(60mm) or 2-3/4"(70mm).
- ④ Measure to confirm the diameter of the hole in the door edge is 1"(25mm).



②

2. Install Latch and Strike

- ① Set the Latch backset to 60mm(2-3/8") or 70mm(2-3/4") to fit your door hole.
- ② Insert the Latch into the door hole, and tighten Screw A to fix the Latch. install StrikerBox and Striker Plate also with Screw A into the door frame.



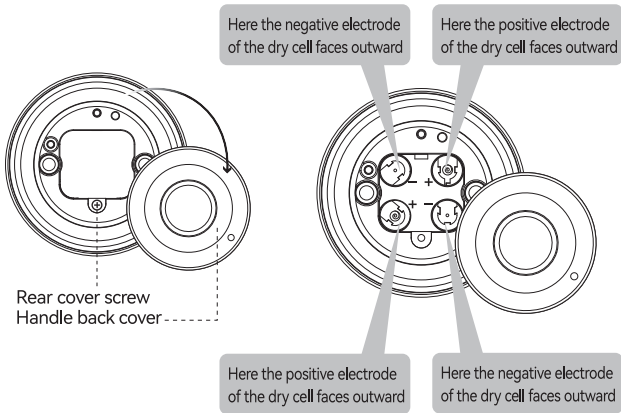
③

3. Install Exterior Knob & Interior Knob

- ① Install Exterior Knob (the lock body with Spindle and two Stems) from outside of your door and make sure the Spindle and Stems go through the three holes of the Latch.
- ② Insert interior Knob by aligning the two stems with the screw holes, connect the wireby inserting the connector into the socket, and tighten Screw B .

4. Install Batteries

① Gently pull the rear cover of the handle upward and turn it to one side, loosen the screws on the rear cover of the battery compartment and remove the hatch cover. Put four batteries of NO. 7 alkaline batteries according to the positive and negative electrode marks, cover the rear hatch of the battery and lock the fixing screws to complete the battery installation. (Refer to the diagram below)

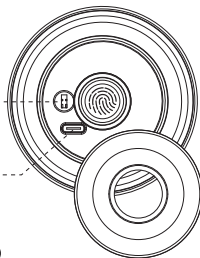


5. Mechanical key and emergency power to unlock

Mechanical key inserted into the lock core and rotated 90 degrees to the right to unlock

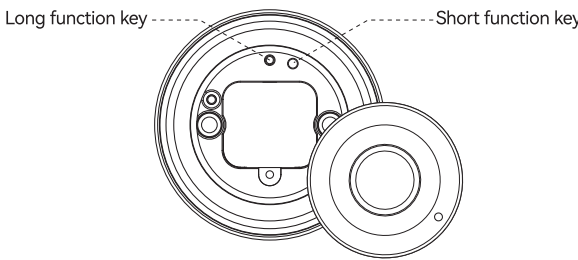
Lock Cylinder-----

Type-C emergency power supply jack-----



④

Operation Guide



(1) Key function:

Long function key:

- ① Press twice to enter the normal mode, and press twice to release the normal mode in the normal mode;
- ② In the non-initialization state, hold down for 2 seconds to unlock (the administrator releases), and make a long sound.

Short function key:

- ① Short press twice, enter the fingerprint (User), drop the sound, the blue light is long on, the timeout red light flashes twice to exit, During the input process, the green light flashes on success, and the red light flashes on failure. A total of six times need to be input, and the green light is long and the buzzer is long.
- ② Press for 6 seconds to reset. During the press process, the red light will be on for a long time, indicating success :(the first white light will be green, and the buzzer will sound for a long time).

⑤

(2) Other notes:

- ① All users added to the App are administrator users. If no administrator user is added, anti-lock operations cannot be performed.
- ② Low pressure alarm: 4.8v, red light flashing 5 times, buzzer ringing 5 times; Only the switch lock operation is performed at low voltage.
- ③ Fingerprint capacity 50 pieces.

5. Networking Instructions

- ① Download the APP: Tuya Intelligence, open Tuya Intelligence, click Add Device or "+" in the upper right corner
- ② On the Add Device page, in the security monitoring menu, click "Door Lock (Wi-Fi)"
- ③ make sure the phone is connected to wifi, and the wifi is 2.4Ghz, click Next.
- ④ Then click the door lock to enter the distribution network state, click confirm on the Tuya smart APP, next step.
- ⑤ Wait for the success of the distribution network.

Scan the code to download and install APP



⑥



⑦