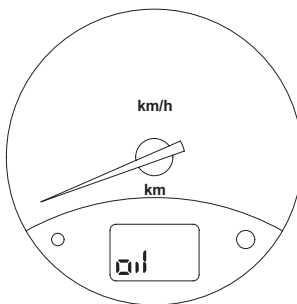


## Renault - Manual Service Reset

### Oil level



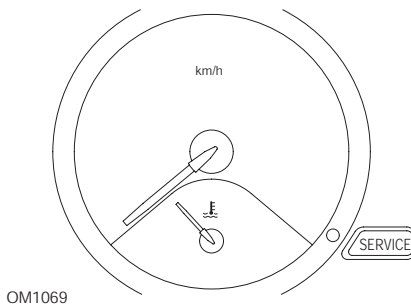
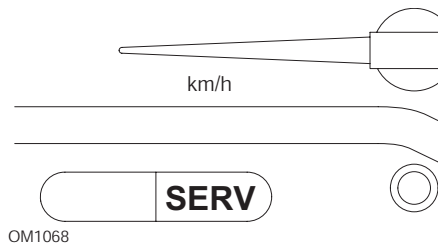
OM1067

The lamp illustrated is an oil level low warning indicator and not a service interval indicator. When the engine oil is at the correct level, this lamp will automatically extinguish.

Autodiagnos Ltd  
Hopton Estate, London Road, Devizes, SN10 2EU  
Tel: 0870 949 3799 Fax: 01380 732001 Email: [info@autodiagnos.com](mailto:info@autodiagnos.com)  
[www.autodiagnos.com](http://www.autodiagnos.com)

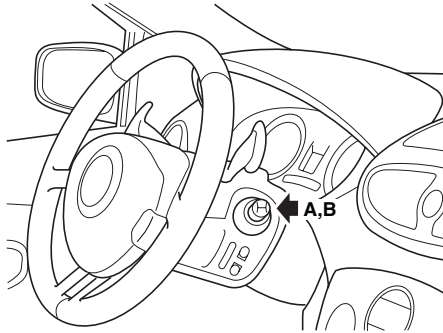
Autodiagnos Limited is registered in England and Wales at Hopton Industrial Estate, Devizes, Wiltshire, SN10 2EU. Company No. 3062855

## Malfunction Indicator Lamp (MIL)



The lamps illustrated above, are Malfunction Indicator Lamps (MIL) and not service interval indicators. When illuminated there is a problem with the vehicle. Refer to manufacturer's documentation for further information.

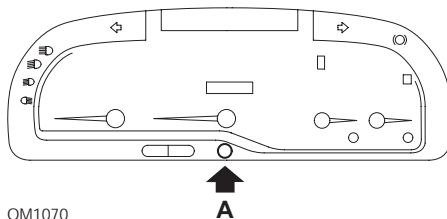
**Clio III (models with trip computer; 2006 onwards)**  
**Scenic II (models with trip computer; 2003 onwards)**



OM1384

1. Switch ignition ON.
2. Press and release display reset button **A** or **B** on the tip of the wiper lever until the '**Distance Before Next**' service information is displayed.
3. Continue to depress the button for 10 seconds until the display shows the distance to next service permanently. The indicator will then show the appropriate service interval (e.g. 6000 miles/10000 km).
4. Release the reset button.
5. Switch ignition OFF.

## Laguna (models with trip computer; 1994 - 1998)

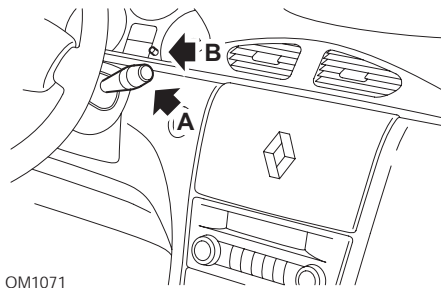


1. Switch ignition ON.
2. Press reset button **A** until spanner icon flashes.
3. Continue to depress the button until the spanner icon stops flashing and remains illuminated.

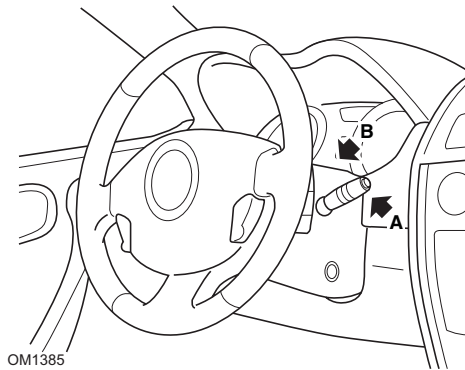
The indicator will show the appropriate service interval (e.g. 6000 miles/10000 km).

4. Release the reset button.
5. Switch ignition OFF.

## Laguna II (2001 onwards)

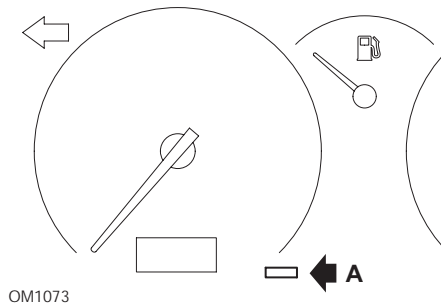


1. Switch ignition ON.
2. Repeatedly press reset button **A** until spanner icon flashes and the distance remaining until the next service appears in the odometer display.
3. Press and hold button **B** until the display has flashed 8 times.
4. Release button **B**. The new service interval is now displayed.
5. Switch ignition OFF.

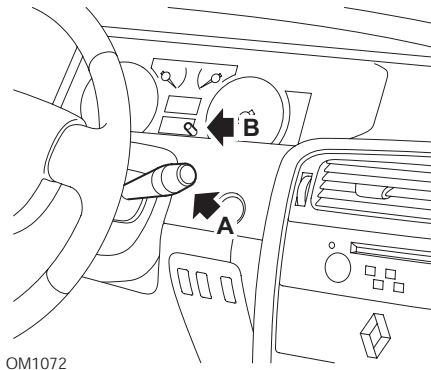
**Megane II (models with trip computer; 2003 onwards)**

1. Switch ignition ON.
2. Press and release display reset button **A** on the tip of the wiper lever until the service information is displayed.
3. Press button **B** for 10 seconds until the display shows the next service interval permanently. The indicator will then show the appropriate distance before the next service (e.g. 6000 miles/10000 km).
4. Release the reset button.
5. Switch ignition OFF.

## Safrane



1. Press and hold button **A**.
2. Switch ignition ON.
3. Continue to depress the button until the spanner icon stops flashing and remains illuminated.  
The indicator will show the appropriate service interval (e.g. 6000 miles/10000 km).
4. Release the reset button.
5. Switch ignition OFF.

**Vel Satis**

1. Switch ignition ON.
2. Repeatedly press reset button **A** until spanner icon flashes and the distance remaining until the next service appears in the odometer display.
3. Press and hold button **B** until the display has flashed 8 times.
4. Release button **B**. The new service interval is now displayed.
5. Switch ignition OFF.