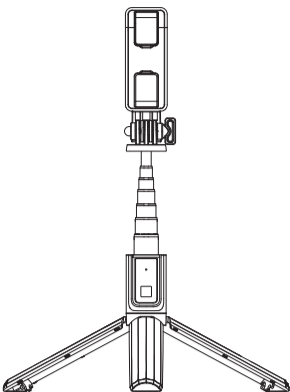


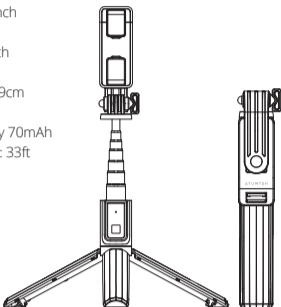
ATUMTEK

User Manual
SELFIE STICK TRIPOD 1M



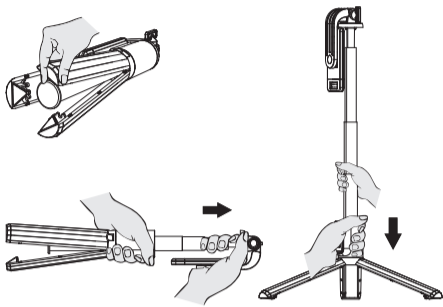
Product Introduction

Folded Size: 7.5*1.3*1.8 inch
Tripod Height: 35.4 inch
Selfie stick Height: 39.4 inch
Phone Clamp Size:
Fit Phone Width 6.3cm to 9cm
Remote Button:
CR1620 3V Lithium Battery 70mAh
Wireless Remote Distance: 33ft
Wireless Version: 4.2
Wireless Name: ATUMTEK



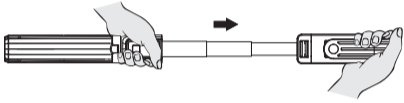
How to use

Step 1: First unlock the 3 legs at the bottom slightly, then pull out the stick to fully open tripod and extend stick to suitable height. (Be careful do not break legs.)

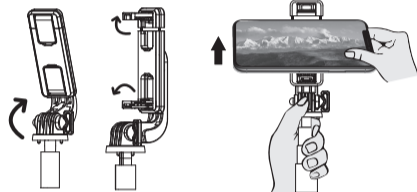


1

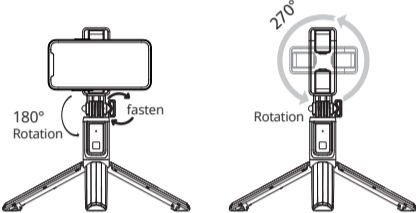
If you do not need to use as tripod, just pull out the stick arm to use as a Selfie Stick.



Step 2: Open phone clamp holder, then widthwise your phone inside phone holder.
Tips: The Extendable clamp side should be on the top.



Step 3: Rotate phone holder freely to take picture. Fasten the phone holder knob firmly when it get loose.



Wireless Remote Connection Instruction

Switch On:
Long press button for 3 seconds. White light is flashing.
Remote will be shut down after 5 minutes no pairing action.

2

Switch Off:
Long press button for 3 seconds. White light is Off.
Connected:
Search and connect with "ATUMTEK". Remote Light is off. Press once to take picture, light flashes when you press.
Standby
Remote will standby after 10 minutes without operation; Press the button for once to activate again.
After First Time Connection:
Once connected with phone successfully for the first time, remote will connect with phone automatically next time.

Solutions When Remote control Failed to Connect with Phone

1. Clear some paired device when your phone Bluetooth have connected with too many devices.
2. Remove battery then put battery back again, try to turn remote on again.

3. Turn on phone Bluetooth, and turn on remote control, when "ATUMTEK" is found on the mobile phone, click "connect"; When "connecting/pairing" is displayed on the interface, press remote button continuously and quickly to connect.
4. Remote control only supports mobile camera, but could not control live APP or other APPs.
5. If you want to switch from taking a picture to video function, you need to choose manually on mobile camera.

Tips about the battery:
1. The life of the battery depends on the frequency of use of the remote control.
2. When not using the remote control, remember to turn off the remote control to save power.
3. When the battery is dead, remember to change the battery in time, you can go to the local store to buy the battery.

3

About Android System Phones Connection:

Some Android phones use phone volume button to control camera or zoom. Please reset on phone camera settings, find volume key function, set the volume key function to shutter. (Do not select zoom or focus.)



4

FCC Statement

Changes or modifications not expressly approved by the party responsible for compliance could void the user's authority to operate the equipment.

This device complies with part 15 of the FCC Rules. Operation is subject to the following two conditions: (1) This device may not cause harmful interference, and (2) this device must accept any interference received, including interference that may cause undesired operation.

Note: This equipment has been tested and found to comply with the limits for a Class B digital device, pursuant to Part 15 of the FCC Rules. These limits are designed to provide reasonable protection against harmful interference in a residential installation. This equipment generates, uses, and can radiate radio frequency energy, and if not installed and used in accordance with the instructions, may cause harmful interference to radio communications. However, there is no guarantee that interference will not occur in a particular installation. If this equipment does cause harmful interference to radio or television reception, which can be determined by turning the equipment off and on, the user is encouraged to try to correct the interference by one or more of the following measures:

- Reorient or relocate the receiving antenna.
- Increase the separation between the equipment and receiver.
- Connect the equipment into an outlet on a circuit different from that to which the receiver is connected.
- Consult the dealer or an experienced radio/TV technician for help.

ATUMTEK

Thank you for choosing ATUMTEK!

ATUMTEK provides warranty coverage of 36 month on all of its brand name products purchased through authorized channels.

EC	REP	Prolinx GmbH Brehmstr.56, 40239 Duesseldorf Germany
UK	REP	Syncwire UK Ltd C/O Lai and Co. 109 Portland Street, Manchester, M1 6N