



Automated Environmental Systems Ltd.

Unit B, Anglian Lane, Bury St. Edmunds, Suffolk, IP32 6SR

01284 658770

sales@automatedenvironmentalsystems.co.uk

Manuel de configuration et d'utilisation pour WiFi intégré

Configuration and Operation Manual for Integrated WiFi

Manual de configuración y funcionamiento para WiFi integrado

Manuale di configurazione e funzionamento per WiFi integrato

Konfigurations- und Bedienungshandbuch für Integrated WiFi

Configuratie en gebruikershandleiding voor geïntegreerde WiFi



Français / English / Español / Italiano / Deutsch / Nederlands

Wi-Fi

1. Downloading & Installing the «Smart Life» app

About the Smart Life app:

You'll need to create a «Smart Life» account to control your heat pump remotely.

The «Smart Life» app lets you control your home appliances from anywhere. You can add and control multiple devices at once.

- Also compatible with Amazon Echo and Google Home (depending on the country).
- You can share your devices with other Smart Life accounts.
- Receive real-time operational alerts.
- Create scenarios with several devices, depending on the app's weather data (geolocation required).

For more information, go to the «Help» section of the «Smart Life» app

The «Smart Life» app and services are provided by Hangzhou Tuya Technology. Poolstar, owner and distributor of the Poolex brand, cannot be held responsible for the operation of the «Smart Life» app. Poolstar has no visibility on your «Smart Life» account.

iOS :

Search for «Smart Life» in the App Store to download the app:



Check the compatibility of your phone and the version of your OS before installing the application

Android :

Search for «Smart Life» on Google Play to download the app :



Check the compatibility of your phone and the version of your OS before installing the application

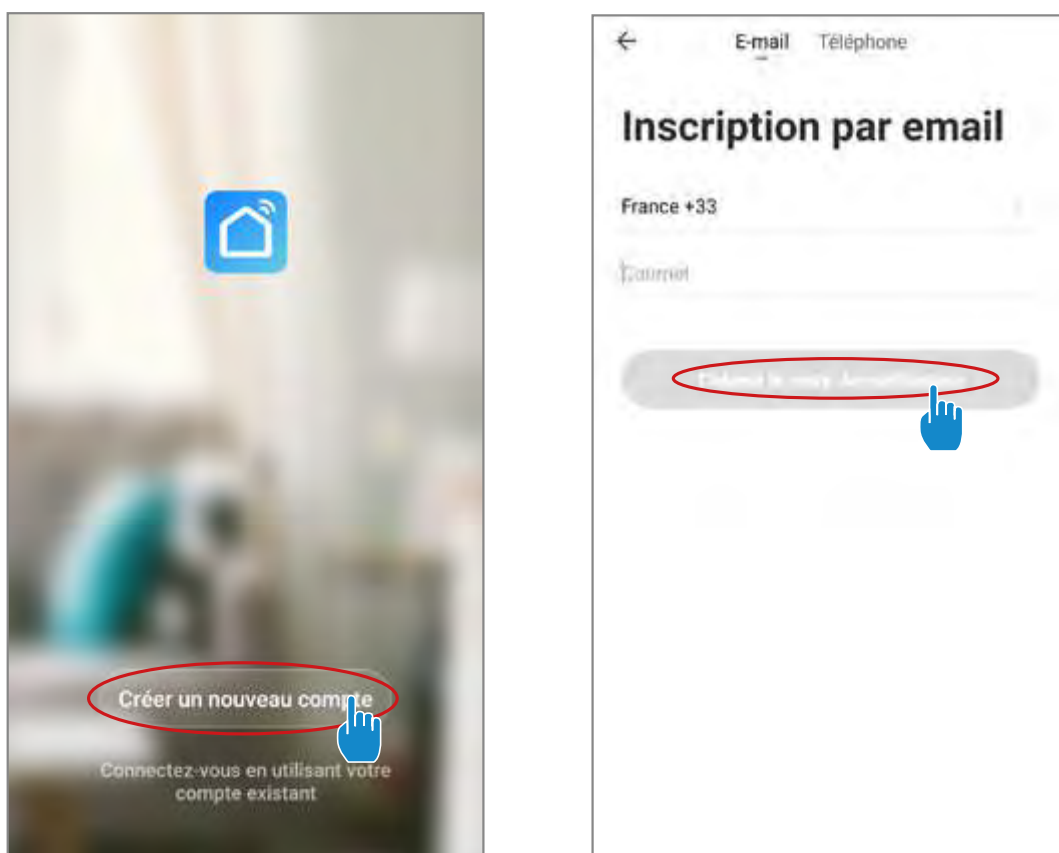
2. Setting up the app

WARNING : Before you begin, make sure you have downloaded the «Smart Life» app, connected to your local WiFi network, and that your heat pump is electrically powered and running.

You'll need to create a «Smart Life» account to control your heat pump remotely. If you already have a Smart Life account, please log in and go directly to step 3.

Step 1 : Click on «Create new account» and choose to register by «Email» or «Phone,» where a verification code will be sent to you.

Enter your email address or phone number and click «Send verification code».



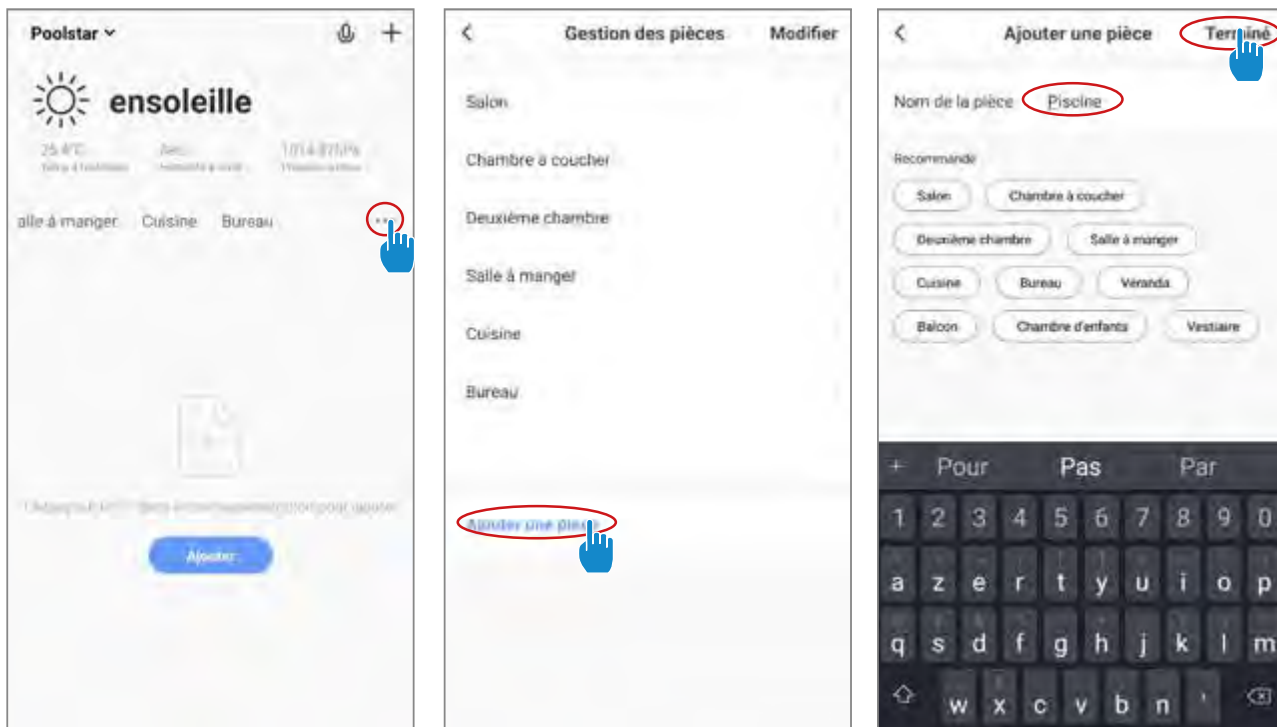
EN

Step 2 : Enter the verification code received by email or phone to validate your account.

Congratulations! You are now part of the «Smart Life» community.

Wi-Fi

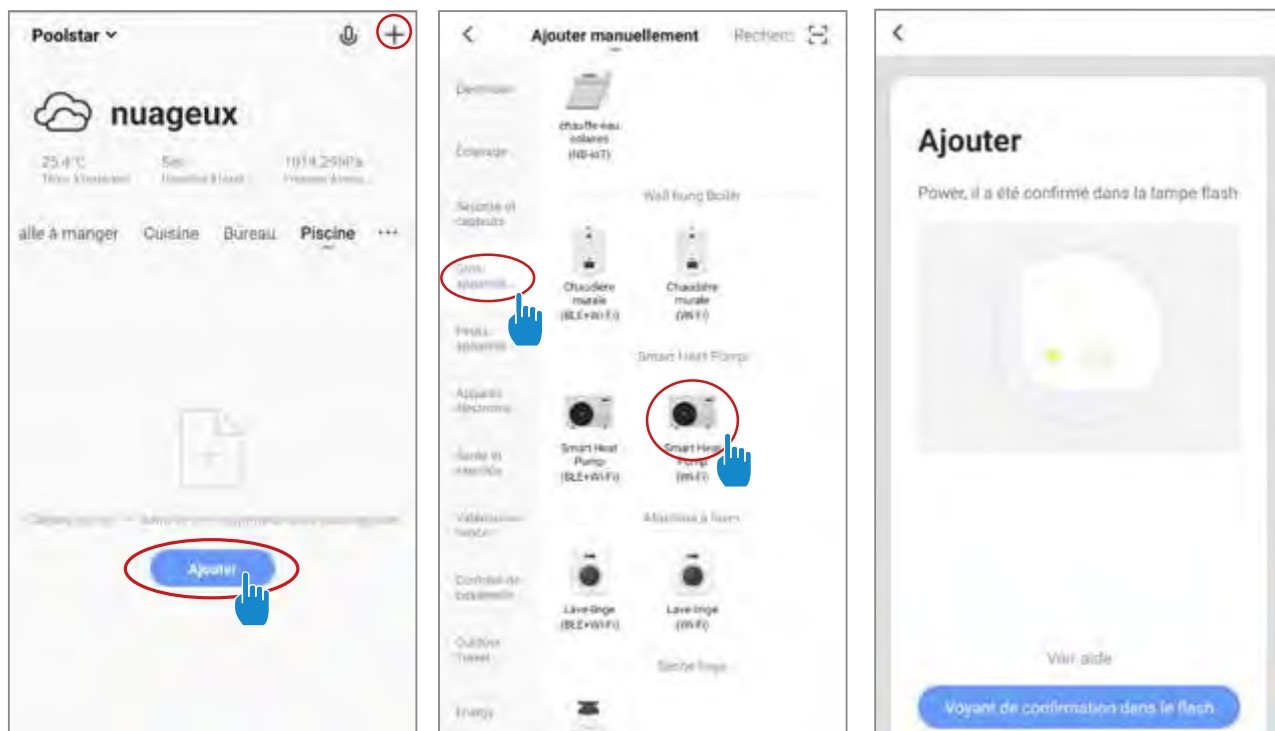
Step 3 (Recommended): Add an object by clicking «...» and then «Add Object.» Enter its name («Pool» for example), then click «Done.»



Step 4 : Now add a device to your «Pool»

Click «Add» or «+» and then «Large appliances...» followed by «Water heater.»

At this point, leave your smartphone on the «Add» screen and go to the pairing step for your control box.



3. Pairing the heat pump

3.1 EZ Mode

Step 1 : Now start the pairing.

Choose your home WiFi network, enter the WiFi password and press «Confirm».

Step 2 : Activate the pairing mode on your heat pump according to the following procedure:

The procedure depends on the model of your control box:

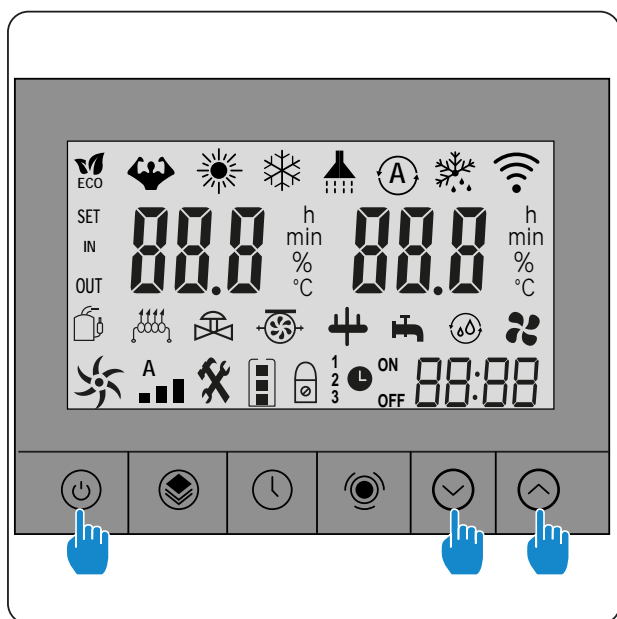


CAUTION The «Smart Life» application only supports 2.4GHz WiFi networks.

If your WiFi network uses the 5GHz frequency, go to the interface of your home WiFi network to create a second 2.4GHz WiFi network (available for most Internet boxes, routers and WiFi access points).



EN



Press + + simultaneously for 5s, flashes quickly, the control unit is ready to be paired.



Press + simultaneously for 5s, flashes quickly, the control box is ready to be paired.

Note: The flashing stops when the box is connected to WiFi

Wi-Fi



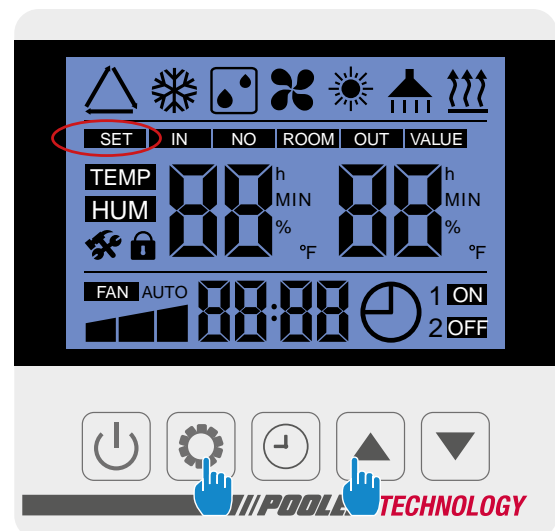
Press + simultaneously for 5s, flashes quickly, the control box is ready to be paired.



Press + simultaneously for 3s, flashes quickly, the control box is ready to be paired.



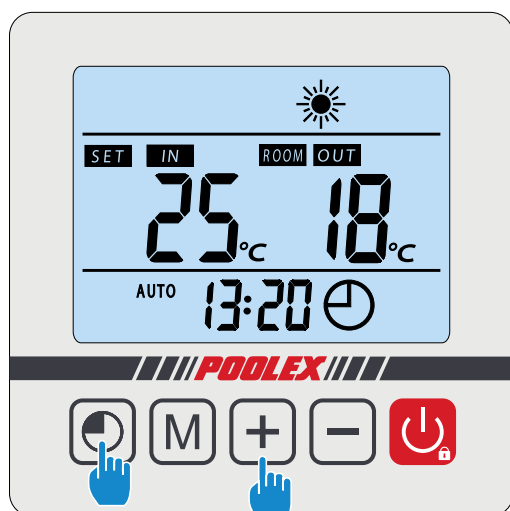
Press + simultaneously for 5s, flashes quickly, the control box is ready to be paired.



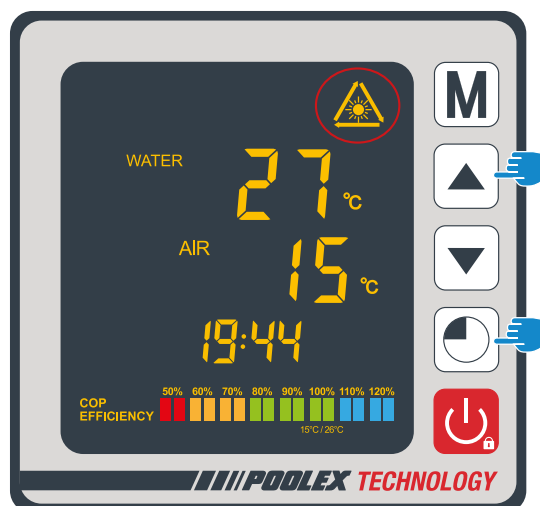
Press + simultaneously for 5s, **SET** flashes quickly, the control box is ready to be paired.

Note: The flashing stops when the box is connected to WiFi

Wi-Fi

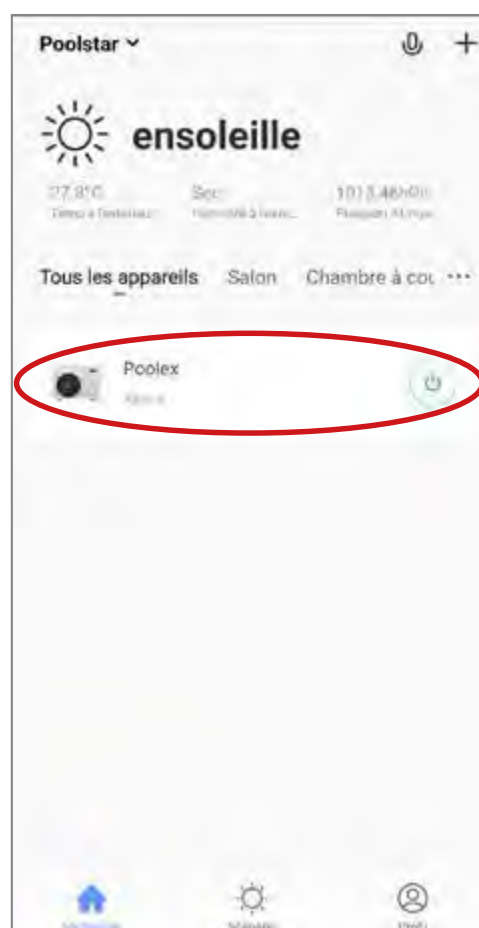
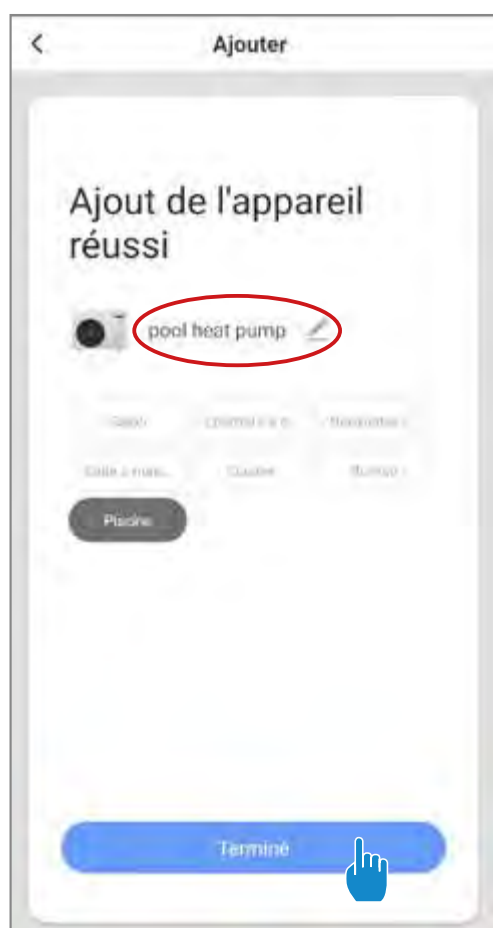


Press + simultaneously for 5s, **SET** flashes quickly, the control box is ready to be paired.



Press + simultaneously for 5s, flashes quickly, the control box is ready to be paired.

The pairing is successful, you can rename your Poolex heat pump then press «Done».
Congratulations, your heat pump can now be controlled from your smartphone.



4. Controlling

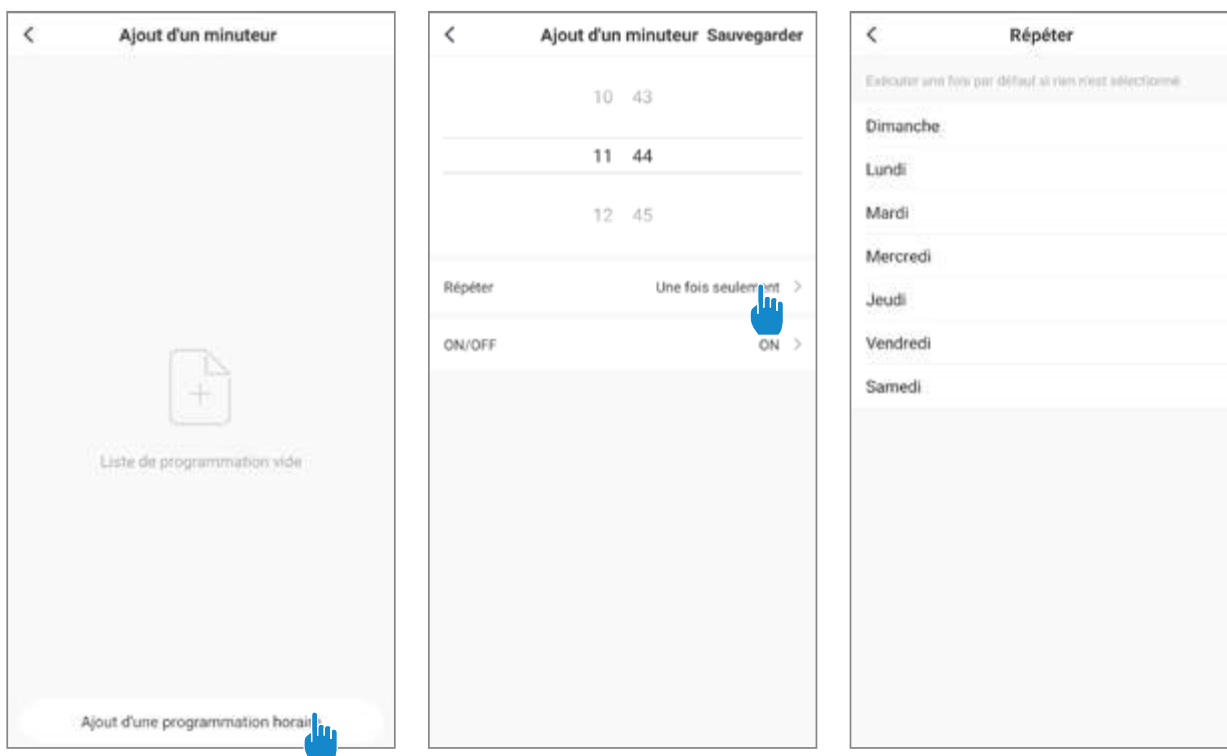
Interface

- 1 Current pool temperature
- 2 Temperature setpoint
- 3 Current operating mode
- 4 Switch the heat pump on/off
- 5 Change the temperature
- 6 Change the operating mode
- 7 Set the operating range



Configure the operating ranges for the heat pump

Step 1 : Create a schedule, choose the time, day(s) of the week(s), and the action (turn on or off) and save.



Step 2 : To delete a time slot, press on it and hold.

Choice of operating modes

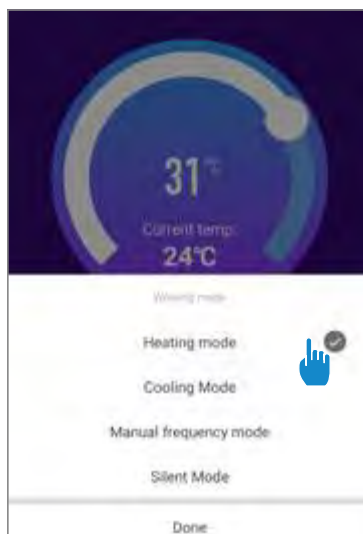
For On/Off heat pumps:
You can choose between Auto, Heating, or Cooling modes.



Available modes

Auto
Cooling
Heating

For Inverter heat pumps :
You can choose between Inverter Heating, Cooling, Eco (Silent) or On/ Off (Manual) modes.



Available modes

Inverter heating*
Inverter cooling*
On/Off (FIX)*
Eco Inverter*

*Some modes may change depending on the machines

Manuel de configuration et d'utilisation pour WiFi intégré

Configuration and Operation Manual for Integrated WiFi

Manual de configuración y funcionamiento para WiFi integrado

Manuale di configurazione e funzionamento per WiFi integrato

Konfigurations- und Bedienungshandbuch für Integrated WiFi

Configuratie en gebruikershandleiding voor geïntegreerde WiFi



ASSISTANCE TECHNIQUE

www.poolex.fr