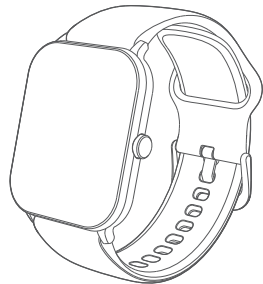


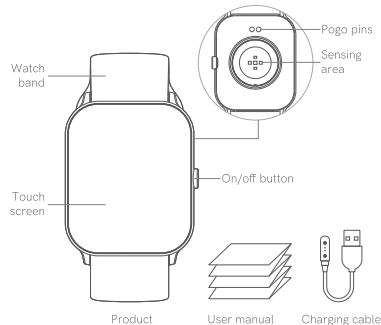


Scan to check  
other languages



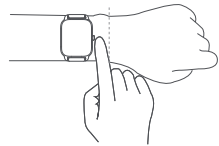
**QCY Watch GTS**  
QCY Smart Call Watch

## Overview



Above figures are for demonstration only yet practical items may vary.

## How to Wear

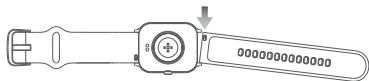


1. You can wear the watch around 1.5cm away from your carpal and adjust band's tightness to fit yourself.
2. It is recommended that you fasten the band when doing sport and loosen it once finish.

**Note: If you wear it loosely, heart rate data collected could be inaccurate.**

## How to Disassemble Band

Refer to the following figure to assemble or remove the band.



**Note: Pull and check after assembling the band.**

## Download and Pair

QCY APP(referred as APP) is necessary for using the watch. With APP, you can enjoy rich use experience. Connection steps:

### 1. Power-on

Press and hold On/Off Button;

### 2. Download and Install APP

Method 1: Use your phone to scan the QR code on watch screen or user manual to download.

Method 2: Search and download APP in App Store

### 3. Open APP and follow instructions to bind the watch to your phone.

Method 1: Scan QR code to add - In the home page of APP, touch watch model to enter Scan page and scan the QR code on screen. Then follow the instructions to bind.

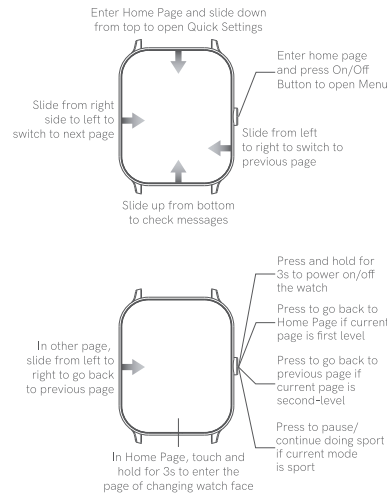
Method 2: Search and add nearby device - Tap "+" in the upper right of APP Home Page to search available devices nearby, tap to add and follow the instructions to bind.

Method 3: Add by device model - Tap "+" in the upper right of APP Home Page, select all products then touch corresponding watch model and follow the instructions to bind.



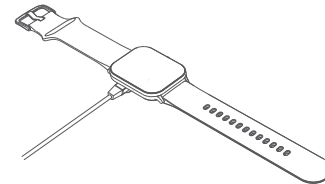
Scan to download App

## Use Instruction



## How to Charge

1. Connect the watch to the connector and ensure pogo pins on the back of watch and the connector well attached.
2. Connect the cable to standard USB charger(output voltage and current is 5V and 2A respectively).
3. If the watch has not been used for a long term and cannot power on, please charge it at least 1 minute before it displays charge icon.
4. Please dry these pins and remove any sweat or water.



## Contact

Phone number: 4008-306-708  
Web: [www.qcy.com](http://www.qcy.com)  
Manufacturer: Dongguan Hele Electronics Co., Ltd.  
Address: No. 325 Yuehui Rd. Daojiao Town Dongguan City Guangdong Province China

Notes:  
Please arrange using time properly as your hearing may be damaged by using the device for a long time.

