

1. ownload and Install Mobile App:

Connect your phone to local Wi-Fi first.
Use your phone to scan the QR code below to
Download and install the App.



3. Add New Device

Connect the Device with the mains
supply (100-250VAC), for the
connection diagrams see section 4.

Press and hold the button for
about 5 seconds until the Red
Led blinks fast.



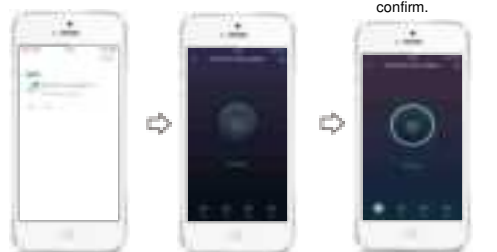
2. Register Account



Click "+" in homepage
or Click Add Device

Confirm

Input Wi-Fi
password and
confirm.



Click Done

Click Switch Icon

Now you can control
the switch by App

4. Count down timer

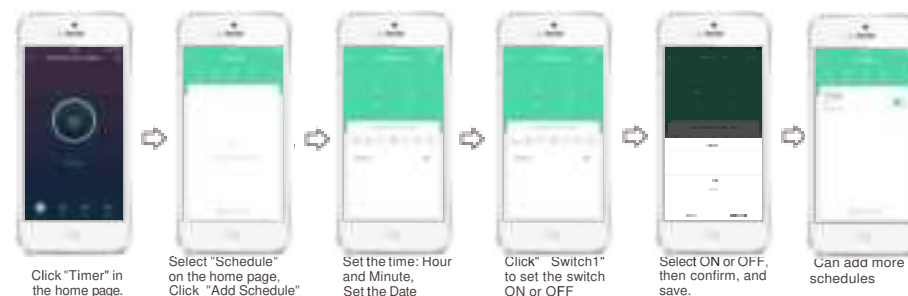


Click "Timer" in
the home page.

Select "Countdown"
on the home page,
set the Hour and Min.
click • to start.

The timer will be ON
or OFF, after set
time.

5. Set scheduled programs.



Click "Timer" in
the home page.

Select "Schedule"
on the home page,
Click "Add Schedule"

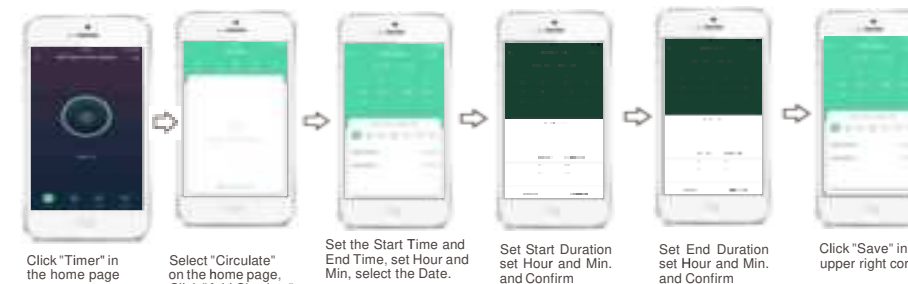
Set the time: Hour
and Minute,
Set the Date

Click "Switch1"
to set the switch
ON or OFF

Select ON or OFF,
then confirm, and
save.

Can add more
schedules

6. Circulate Function



Click "Timer" in
the home page

Select "Circulate"
on the home page,
Click "Add Circulate"

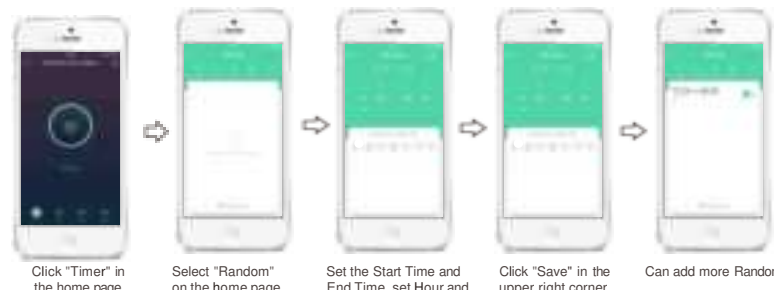
Set the Start Time and
End Time, set Hour and
Min, select the Date.

Set Start Duration
set Hour and Min.
and Confirm

Set End Duration
set Hour and Min.
and Confirm

Click "Save" in the
upper right corner.

7. Random Function



Click "Timer" in
the home page

Select "Random"
on the home page,
Click "Add Random"

Set the Start Time and
End Time, set Hour and
Min, select the Date

Click "Save" in the
upper right corner

Can add more Randoms

8. Astronomical Function set Sunrise time



Click "Timer" in
the home page.

Select "Astronomical"
And tap Sunrise.

Select "before",
"Sunrise" or "after"
time, select day
and "save."

9. Astronomical Function set Sunset time



Click "Timer" in the home page.

Select "Astronomical" And tap Sunset.

Select "before", "Sunset" or "after" time, select day and -save."

10. Meter Function



Click "Electric" in the home page

The App can display:
Power (W),
Current (mA),
Voltage (V),
Daily Consumption: (KWh)
Monthly Consumption: (KWh)
Total Consumption: (KWh),

When the measured power is less than 3 W, the App displays Power(W) and Current (mA) as both "0", but as the consumption accumulates the meter will account and measure.

11. Modify Device Icon



Click this mark :L. in the upper right corner

Click this mark :L. in the upper right corner

Click "Icon"

Take Photo or Select from Album if no need change Click "Cancel"

12. Modify Device Name



Click this mark :L. in the upper right corner

Click this mark :L. in the upper right corner

Click "Name"

Change the name, and confirm

13. Share Device



Click "Timer" in the home page.

Click "Share Device"

Click "Add Sharing",

Input the cell phone number, and click "Done"

14. Create Group



Click "Timer" in the home page.

Click "Create Group"

Select the device and confirm.

Enter Group Name and Save

15. Specification

- Rated Voltage: 100-240VAC 50-60HZ.
- Rated Current: 20A 250VAC(Cos(j) 1)
- Contact Configuration: 1NO(SPST-NO)
- Wi-Fi Frequency: 2.4GHZ
- Mounting: DIN RAIL 35 mm (EN60715)
- Ambient temperature range: (-10°C to 60°C)
- Can set 30 ON/OFF programs per day or per week.
- Countdown time, from 1 Min to 23 hours 59 Mins.
- If the product is disconnected from the network, the timer retains all programs set up by Mobile App and works according to the set programs.
- With memory function, When the product contact is in the close state, after a power failure the product contacts keeps the closed state.
- Also, can be controlled by tactile switch from terminal A1 and A2
- Can be shared with 20 users by Mobile App.
- Limit current 20A, if load exceeds 22A, the product will automatically disconnect load circuit.
- With Bluetooth function, when the WIFI signal is disconnected for 5 minutes, you can use the mobile APP to control the on and off of the product through Bluetooth.

16. Connection Diagrams

